

# LANDSCAPE DESIGN REPORT

96 ANZAC AVENUE, WEST RYDE NSW 2114

# CONTENTS

Cover Sheet	00
Contents	01
Local Context & Site Analysis	02
Existing Trees	03
Open Space Programming	04
Open Space Calculations	05
Canopy Coverage	06
Landscape Concept	07
Landscape Concept	08
Landscape Concept	09
Landscape Sections	10
Landscape Planting Strategy	11
Landscape Planting Strategy	12
Landscape Planting Strategy	13
Landscape Planting Palette	14
Landscape Planting Palette	15

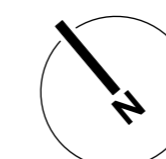
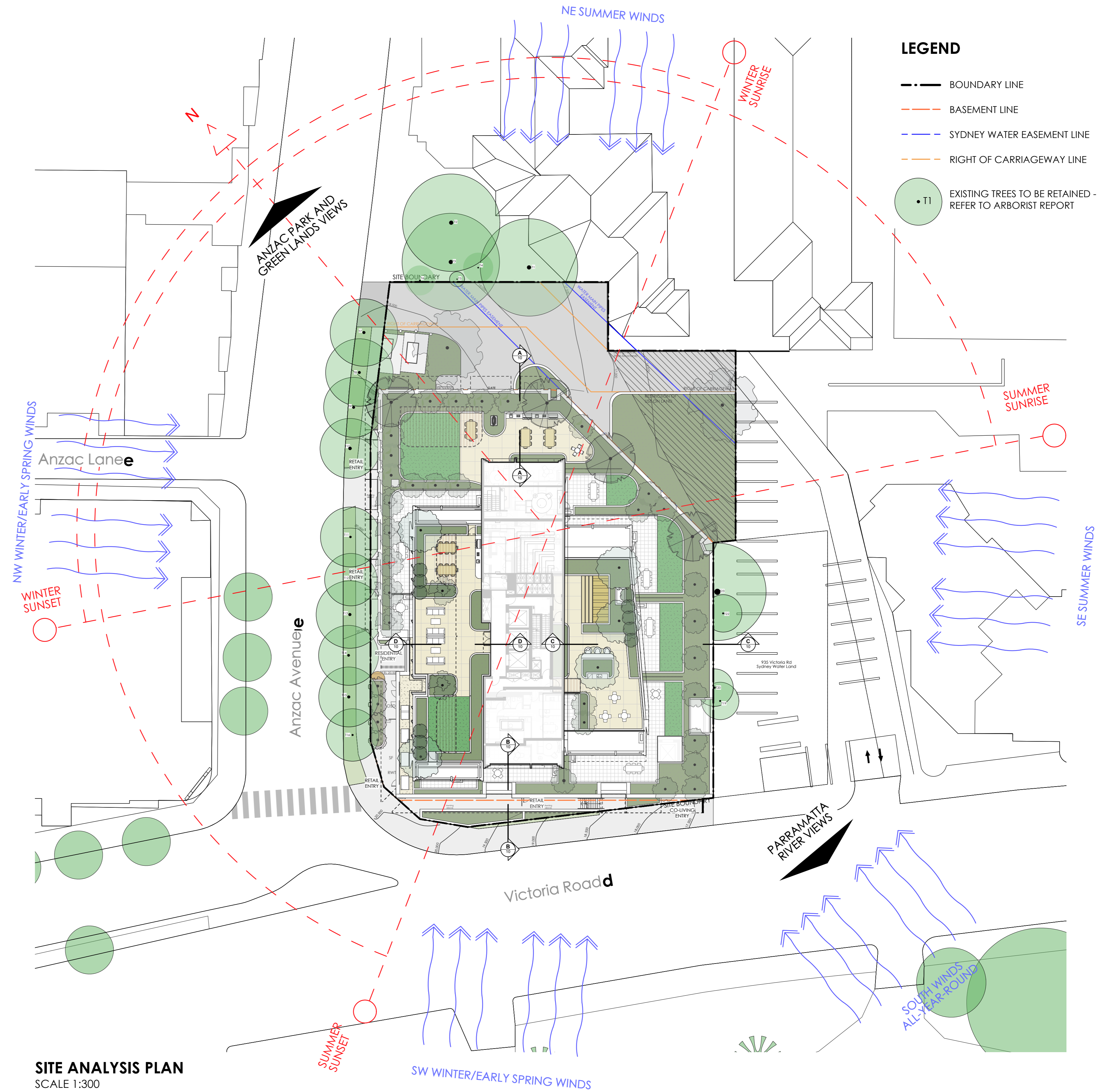
# LOCAL CONTEXT & SITE ANALYSIS



AERIAL PHOTO - 96 ANZAC AVENUE, WEST RYDE NSW 2114 (SOURCE: SIX MAPS)

## KEY SURROUNDING LANDMARKS:

- VICTORIA ROAD
- WEST RYDE TRAIN STATION
- WEST RYDE TOWN CENTER
- ANZAC PARK
- SYDNEY WATER MONITORING SERVICES



# EXISTING TREES



VIEW OF EXISTING TREES ALONG ANZAC AVENUE FRONTAGE (SOURCE: GOOGLE MAPS)



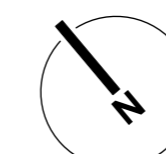
VIEW OF EXISTING TREES ALONG ANZAC AVENUE FRONTAGE (SOURCE: GOOGLE MAPS)

## EXISTING TREE SCHEDULE

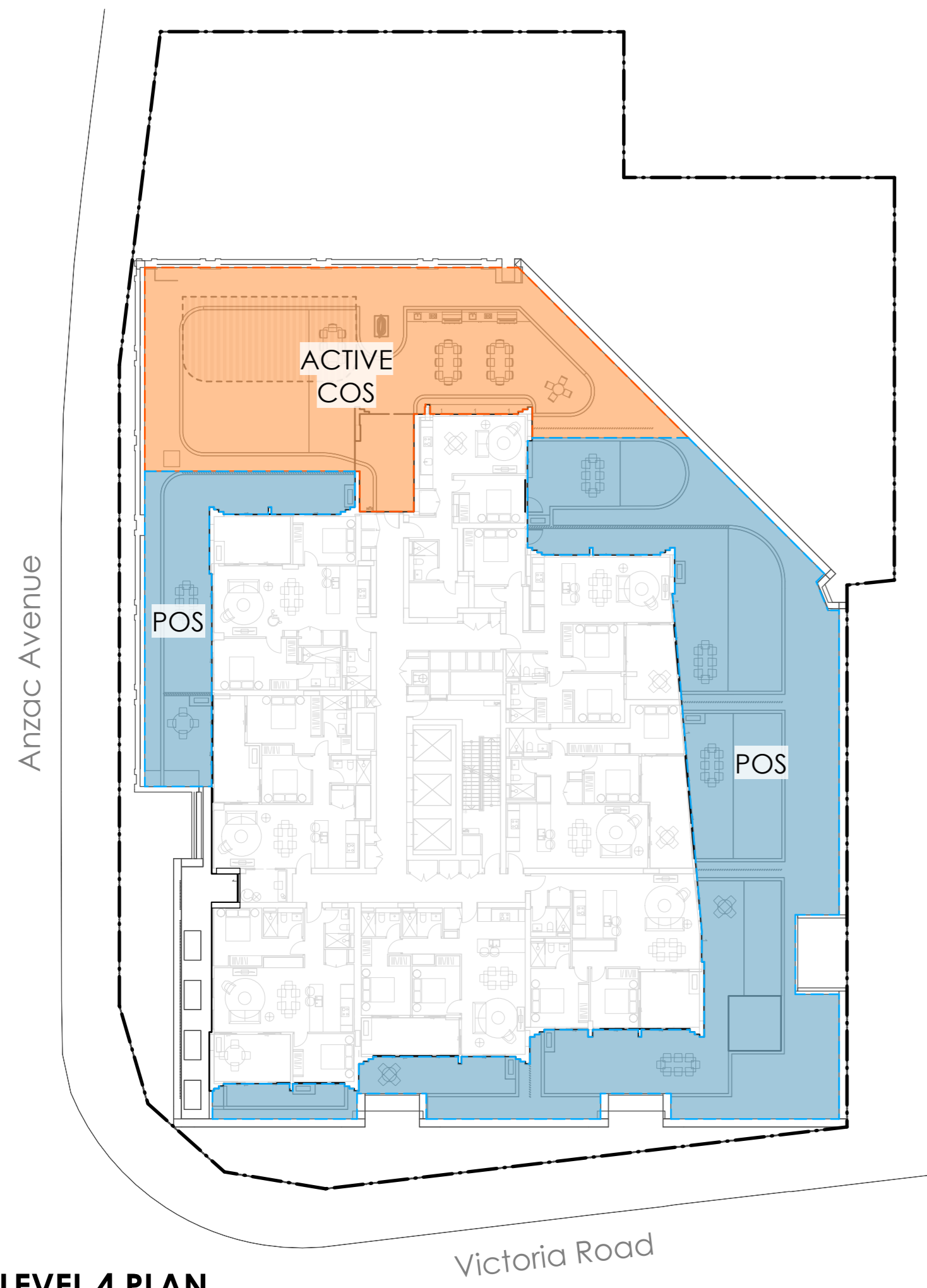
Tree ID	Species	Retention Category
1	Eucalyptus microcorys	Retained
2	Eucalyptus microcorys	Retained
3	Eucalyptus microcorys	Retained
4	Melaleuca sp	Retained
5	Elaeocarpus reticulatus	Retained
6	Elaeocarpus reticulatus	Retained
7	Triadica sebifera	Retained
8	Triadica sebifera	Retained
9	Triadica sebifera	Retained
10	Triadica sebifera	Retained
11	Triadica sebifera	Retained
12	Triadica sebifera	Retained
13	Triadica sebifera	Retained
14	Triadica sebifera	Retained
15	Triadica sebifera	Retained
16	Triadica sebifera	Retained
17	Callistemon sp.	Removed
18	Lagerstroemia indica	Removed
19	Leptospermum petersonii	Retained
20	Celtis sp.	Retained
21	Ulmus parvifolia	Removed
22	Leptospermum petersonii	Retained
23	Leptospermum petersonii	Retained

## LEGEND

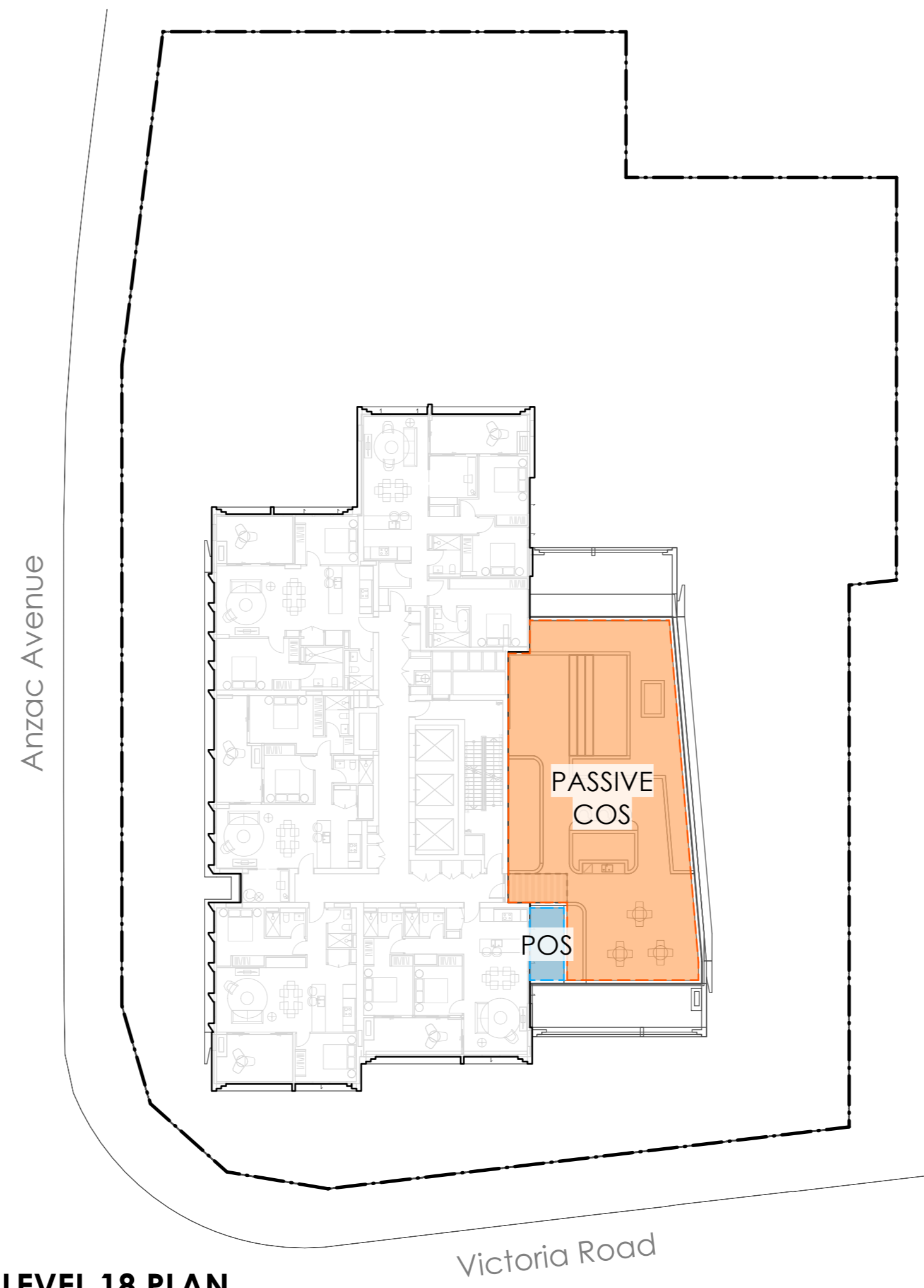
- BOUNDARY LINE
- - - BASEMENT LINE
- - - SYDNEY WATER EASEMENT LINE
- - - RIGHT OF CARRIAGEWAY LINE
- T1 EXISTING TREES TO BE RETAINED - REFER TO ARBORIST REPORT
- T1 EXISTING TREES TO BE REMOVED - REFER TO ARBORIST REPORT
- SRZ - REFER TO ARBORIST REPORT
- TPZ - REFER TO ARBORIST REPORT



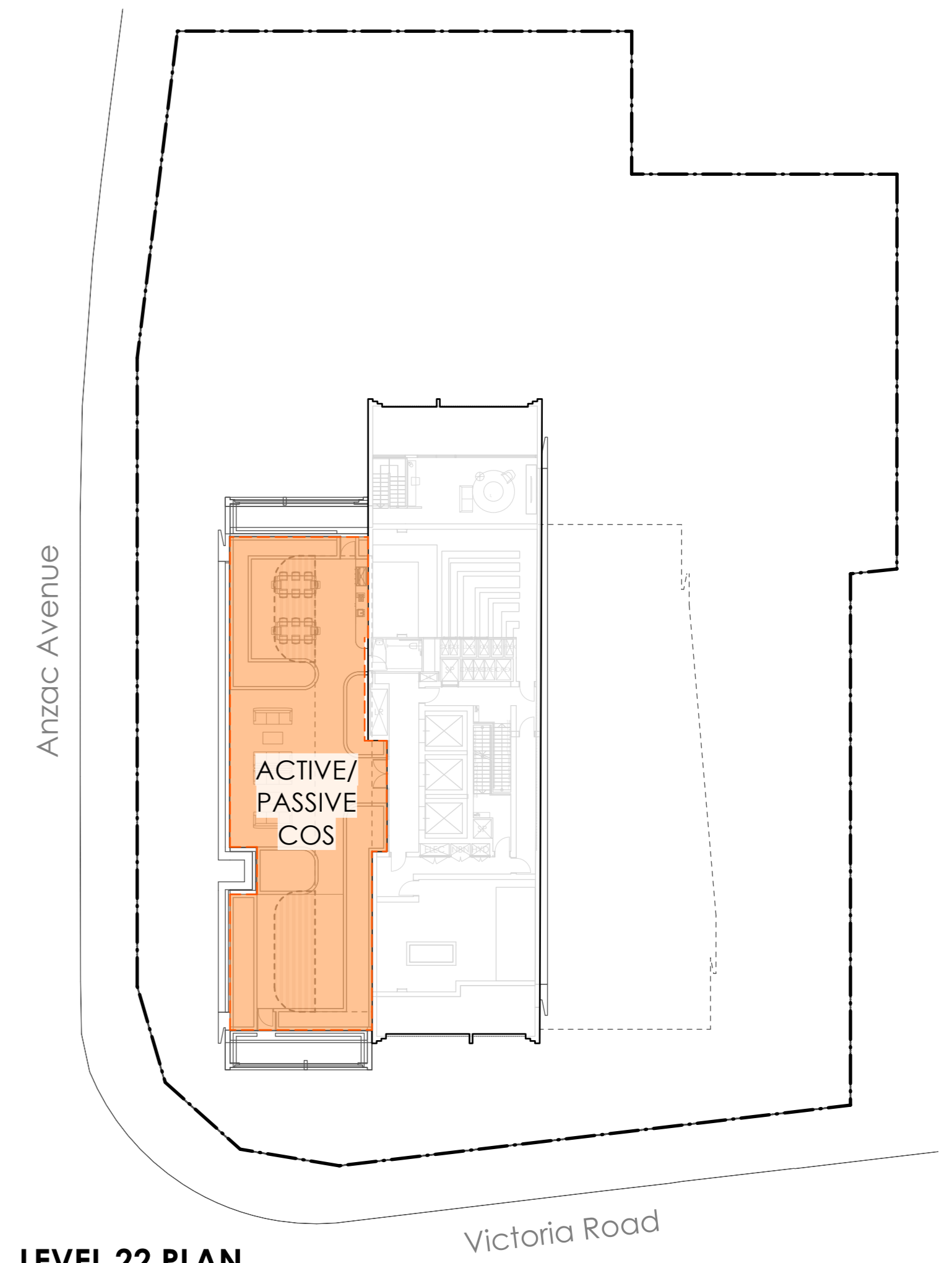
# OPEN SPACE PROGRAMMING



**LEVEL 4 PLAN**  
SCALE 1:300



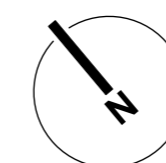
**LEVEL 18 PLAN**  
SCALE 1:300



**LEVEL 22 PLAN**  
SCALE 1:300

## LEGEND

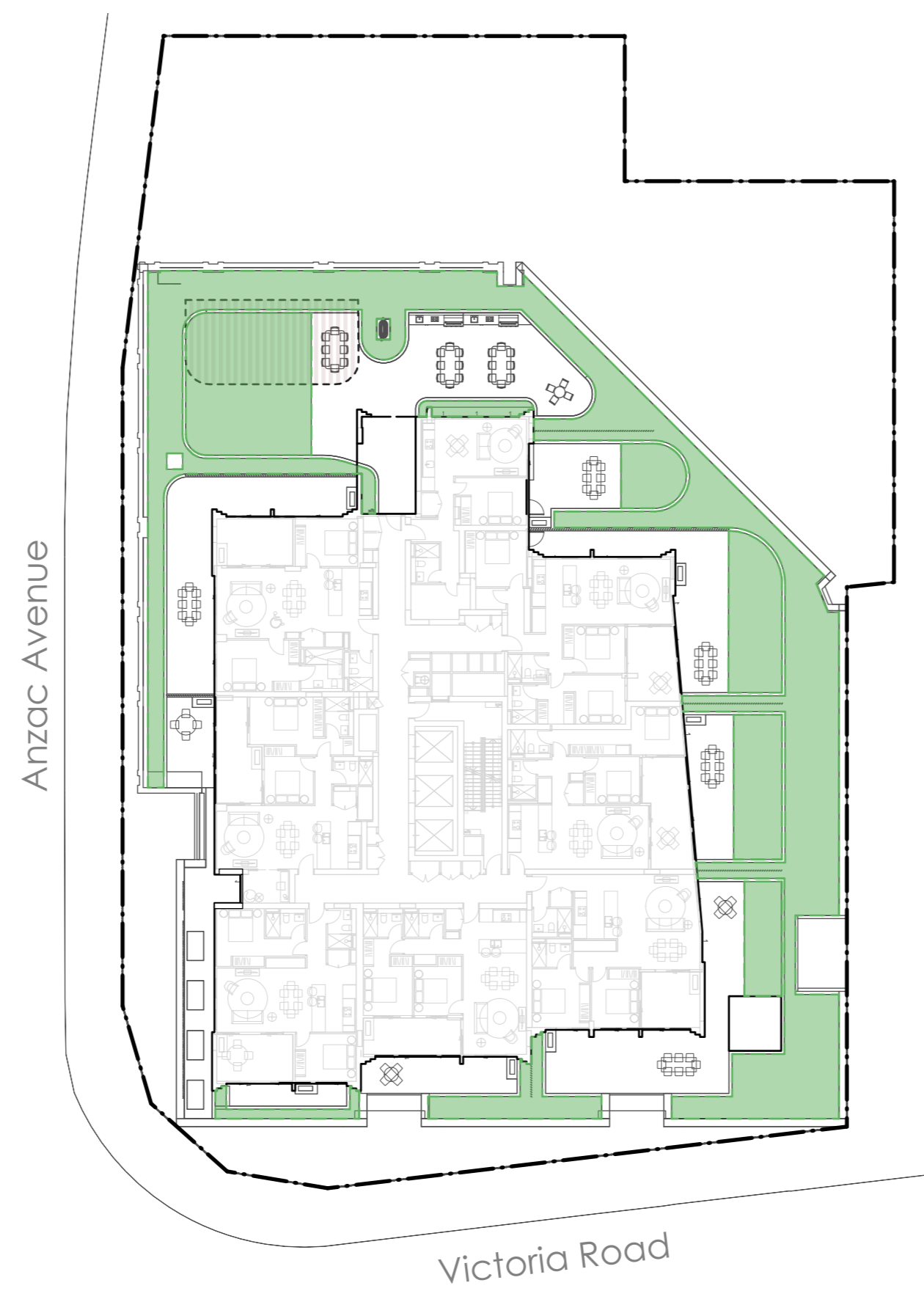
- BOUNDARY LINE
- COMMUNAL OPEN SPACE (COS)
- PRIVATE OPEN SPACE (POS)



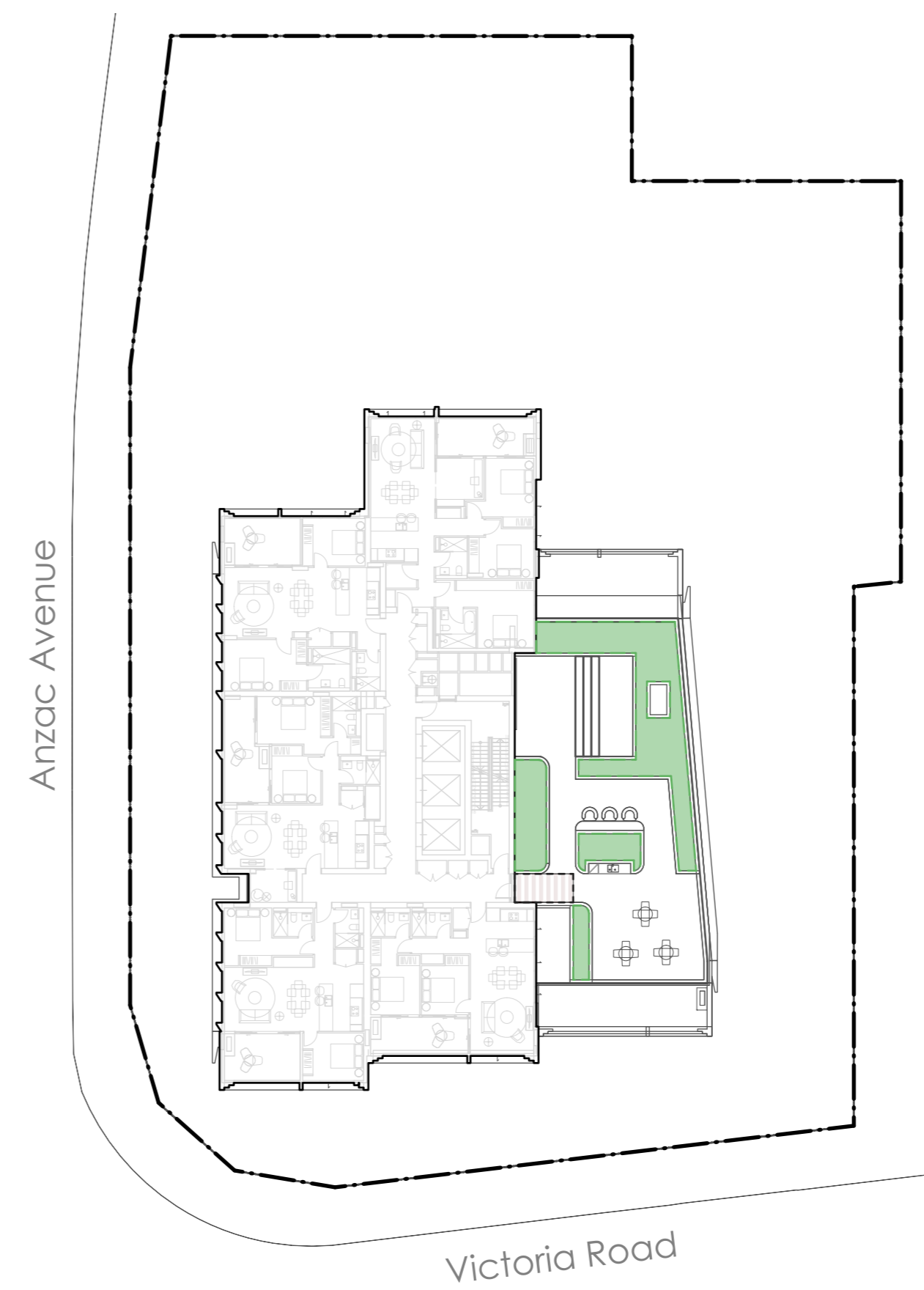
# OPEN SPACE CALCULATIONS



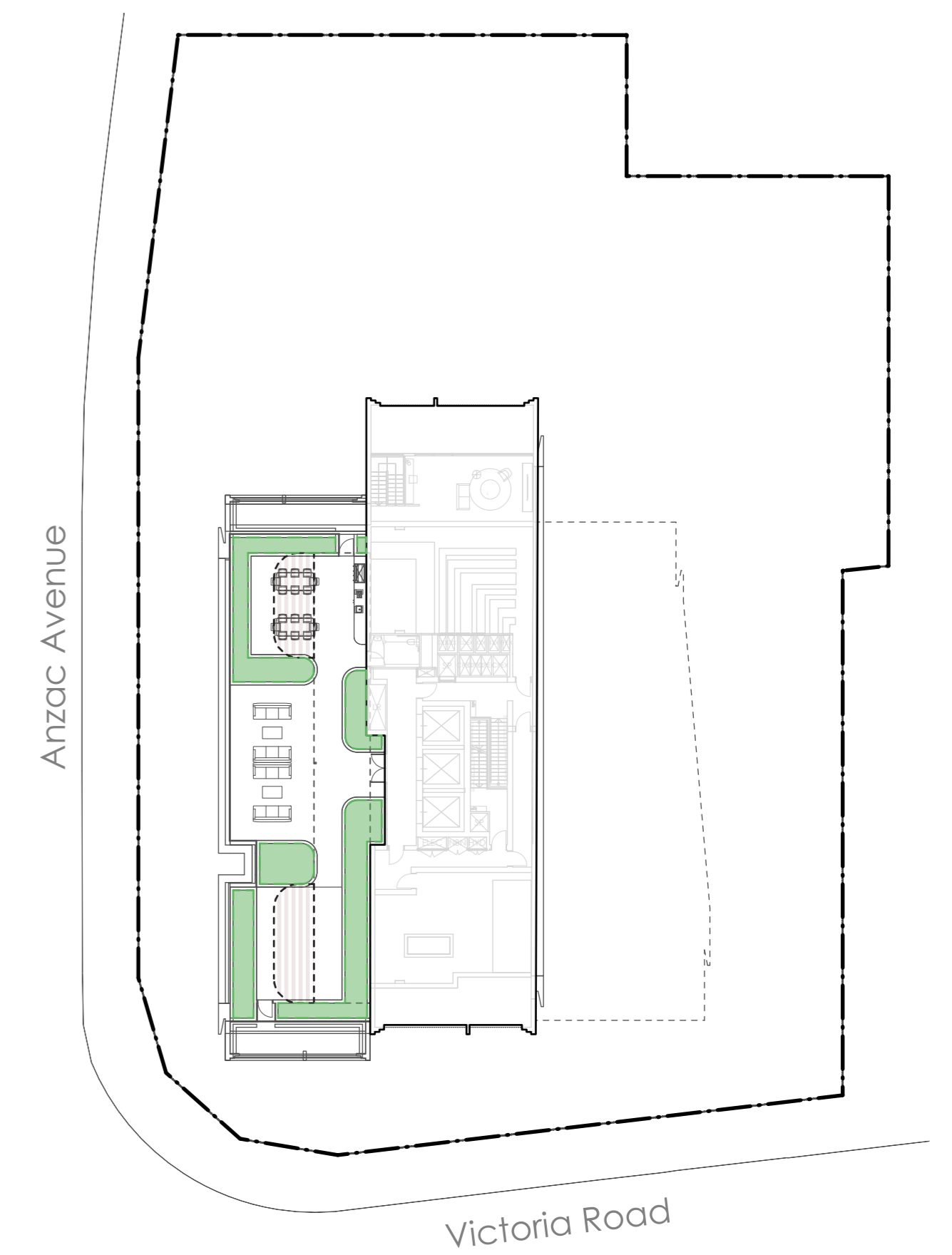
**GROUND FLOOR PLAN**  
SCALE 1:350



**LEVEL 4 PLAN**  
SCALE 1:350



**LEVEL 18 PLAN**  
SCALE 1:350

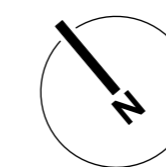


**LEVEL 22 PLAN**  
SCALE 1:350

## LEGEND

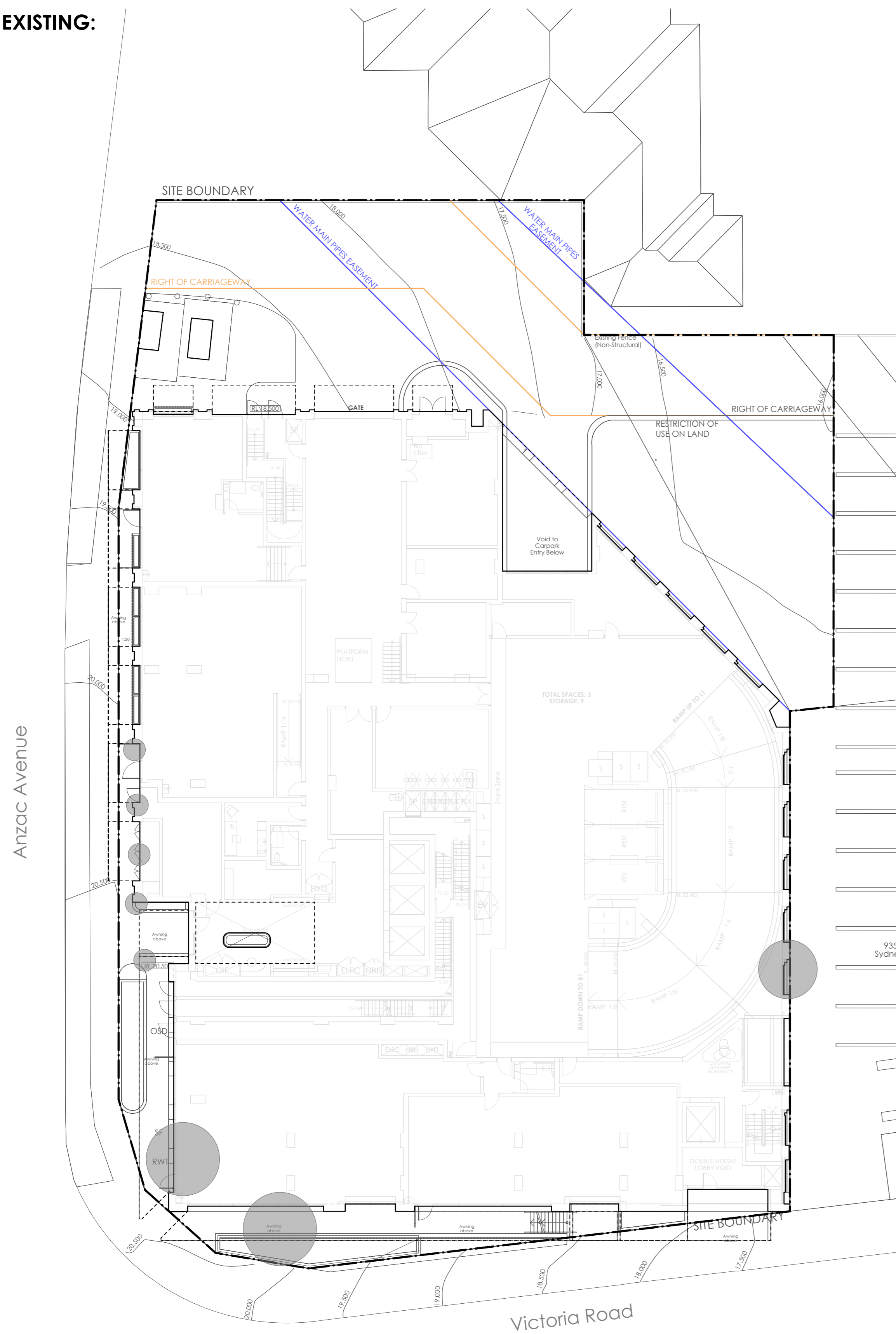
- BOUNDARY LINE
- BASEMENT LINE
- SYDNEY WATER EASEMENT LINE
- RIGHT OF CARRIAGEWAY LINE
- DEEP SOIL AREA
- LANDSCAPED AREA

<b>SITE AREA</b>	3149m <sup>2</sup> (100%)	
	<b>PROPOSED</b>	<b>REQUIRED</b>
<b>DEEP SOIL AREA</b>	240.93m <sup>2</sup> (7.65%)	220.43m <sup>2</sup> (7%)
<b>TOTAL LANDSCAPED AREA</b>	1010.40m <sup>2</sup> (32%)	-
<b>GROUND FLOOR</b>	349.10m <sup>2</sup>	
<b>LEVEL 4</b>	512.2m <sup>2</sup>	
<b>LEVEL 18</b>	73.05m <sup>2</sup>	
<b>LEVEL 22</b>	76.05m <sup>2</sup>	



# CANOPY COVERAGE

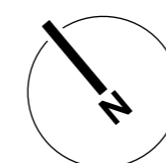
EXISTING:



PROPOSED:





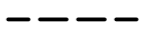


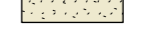
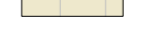


SITE AREA	3149m <sup>2</sup>	100%
EXISTING CANOPY COVERAGE	60.6m <sup>2</sup>	1.9%
PROPOSED CANOPY COVERAGE	788.5m <sup>2</sup>	25%

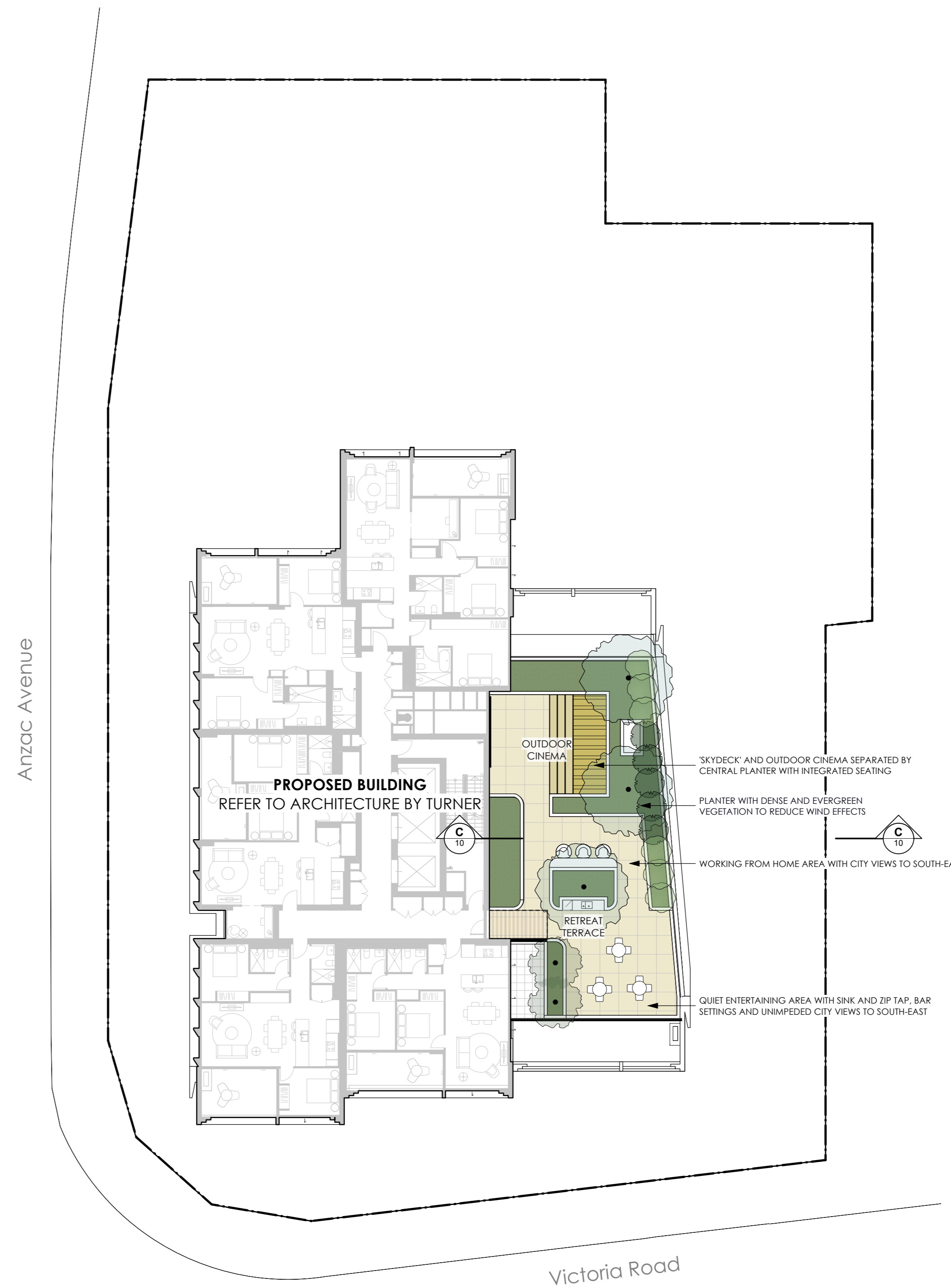




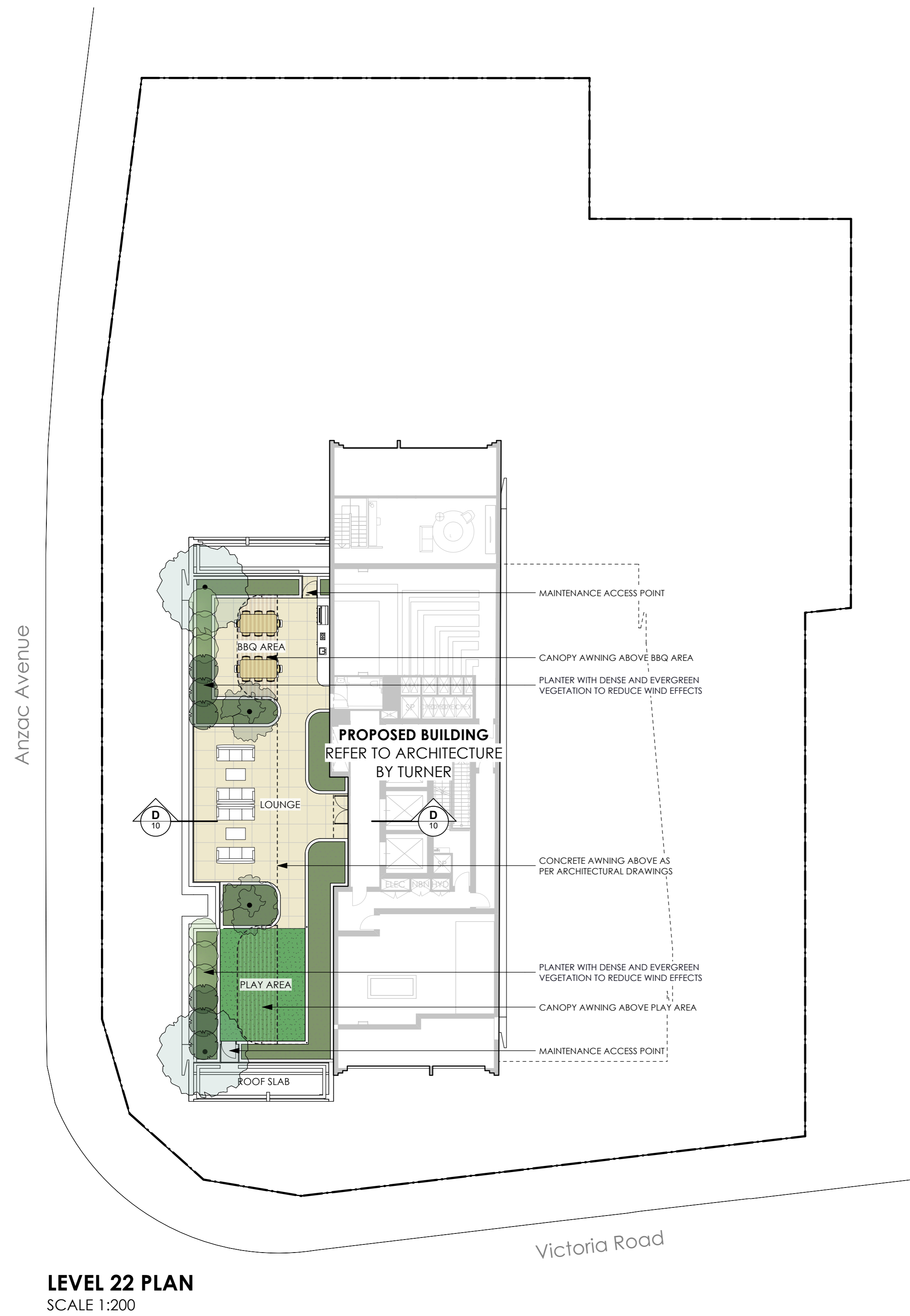
# LANDSCAPE CONCEPT

## LEGEND

-  BOUNDARY LINE
-  BASEMENT LINE
-  LINE OF FLOOR ABOVE
-  PROPOSED GARDEN
-  PROPOSED ARTIFICIAL LAWN
-  PROPOSED GRAVEL AREA
-  PROPOSED COMMUNAL SPACE PAVING
-  PROPOSED PRIVATE SPACE PAVING
-  PROPOSED TIMBER DECKING

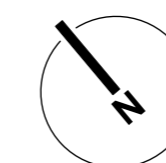
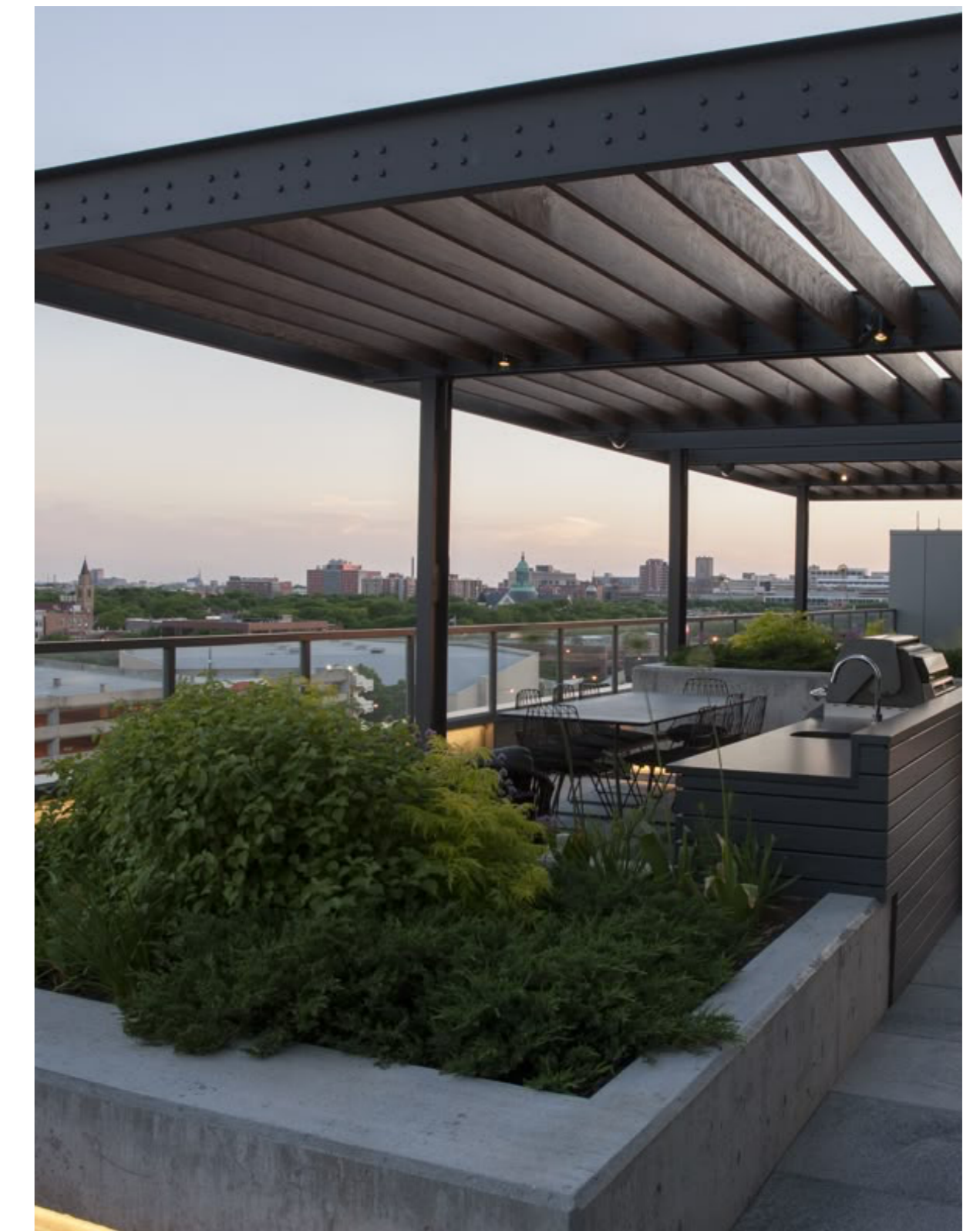


# LANDSCAPE CONCEPT

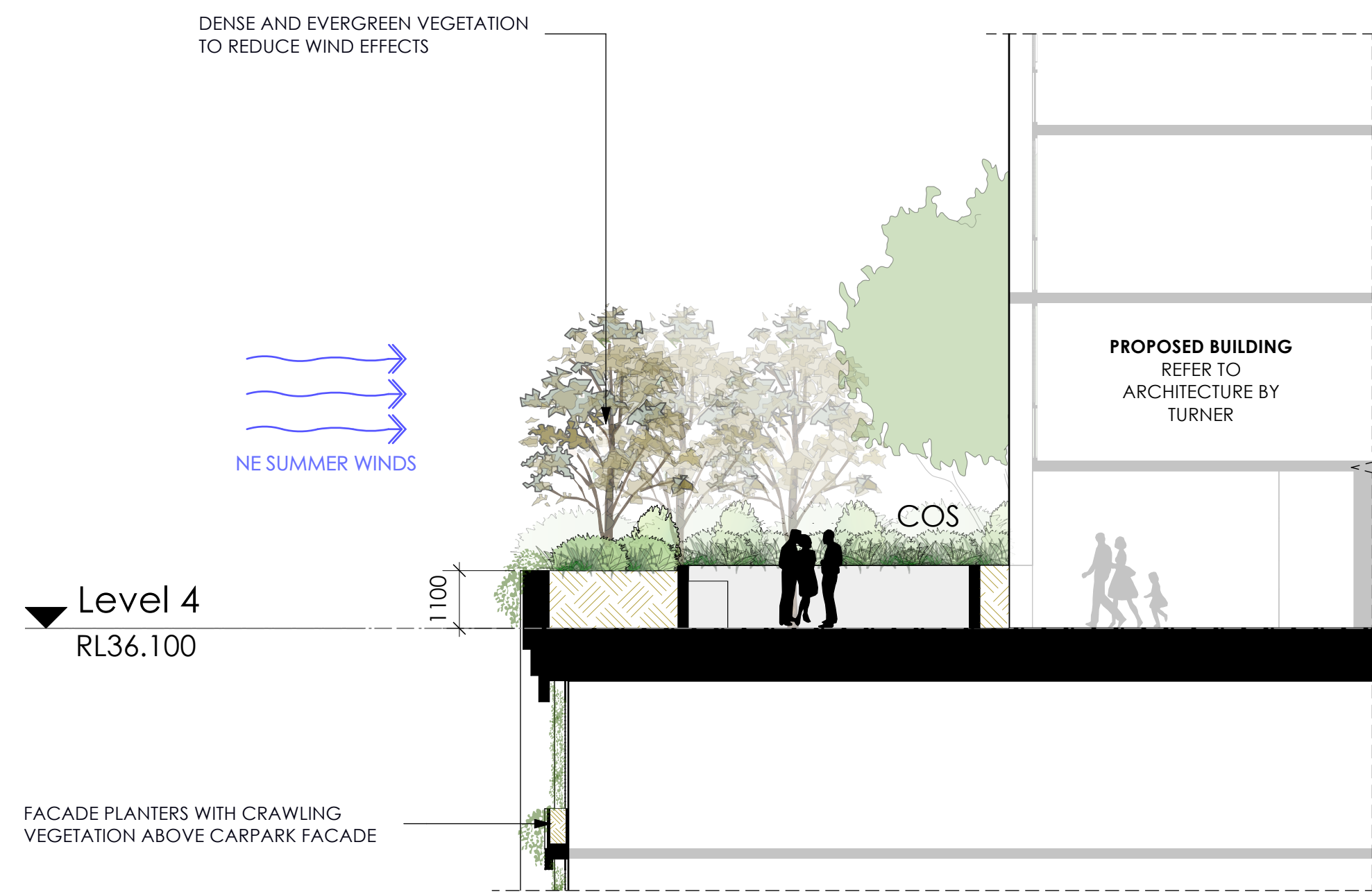


## LEGEND

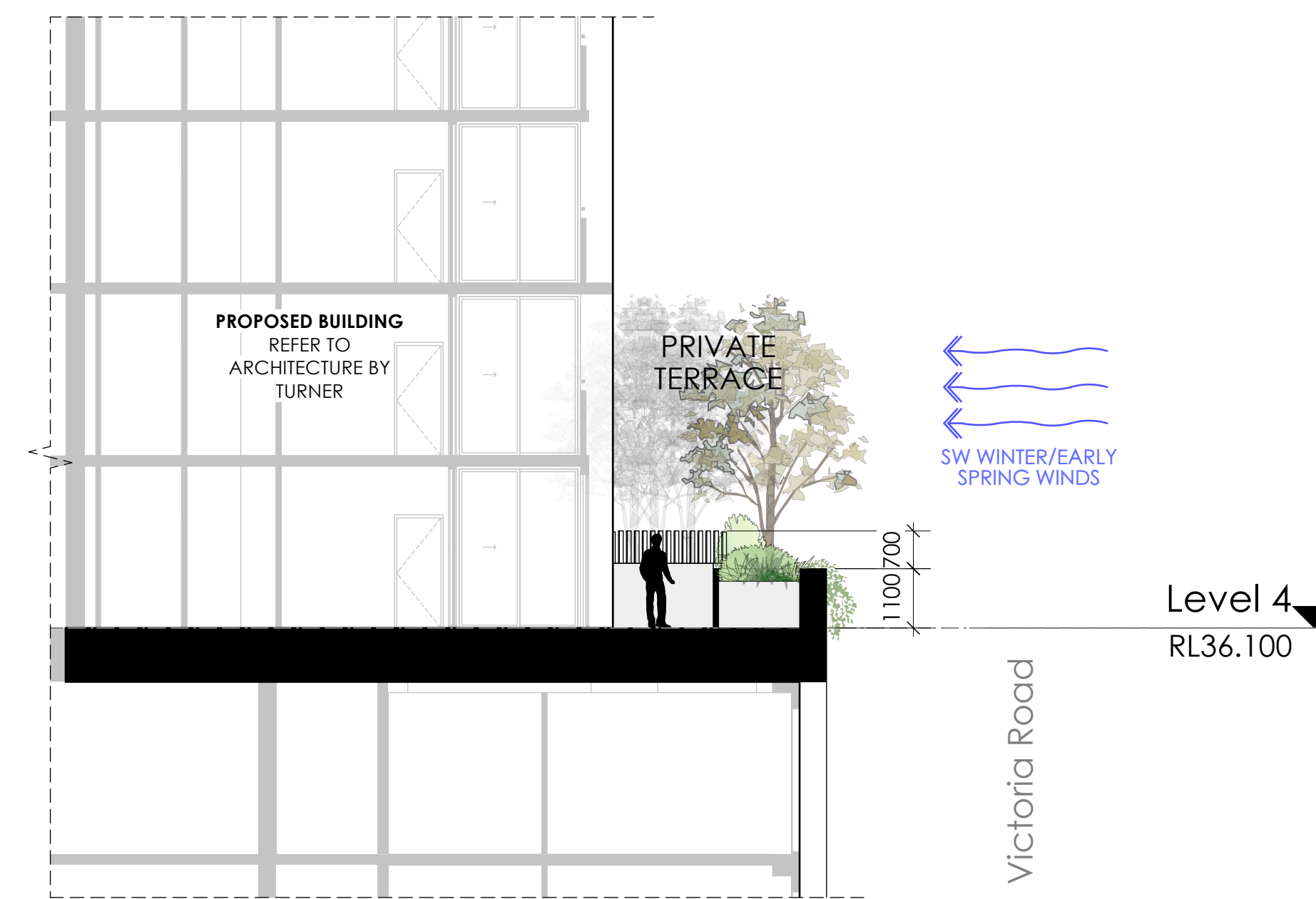
- BOUNDARY LINE
- BASEMENT LINE
- LINE OF FLOOR ABOVE
- PROPOSED GARDEN
- PROPOSED ARTIFICIAL LAWN
- PROPOSED GRAVEL AREA
- PROPOSED COMMUNAL SPACE PAVING
- PROPOSED PRIVATE SPACE PAVING
- PROPOSED TIMBER DECKING



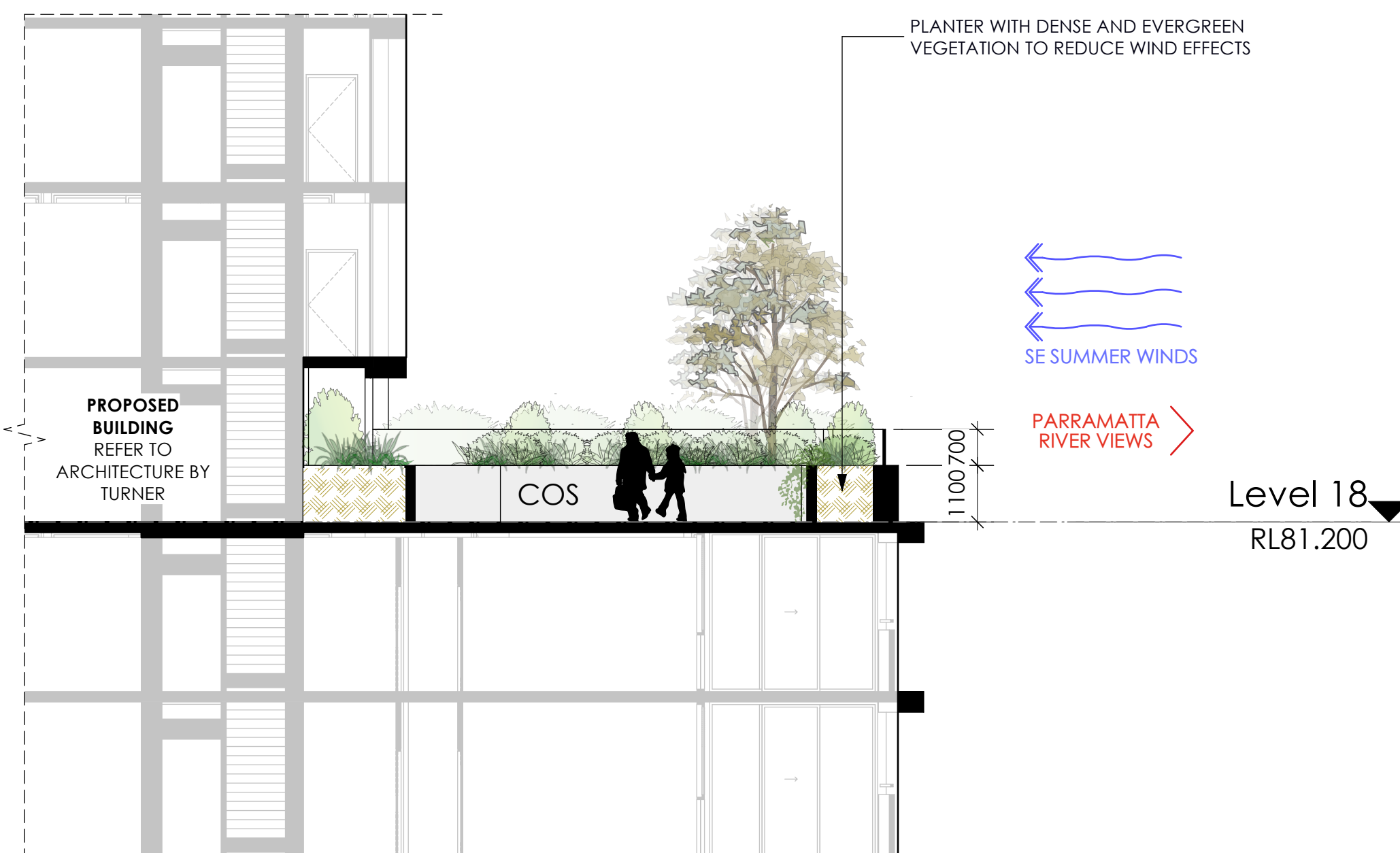
# LANDSCAPE SECTIONS



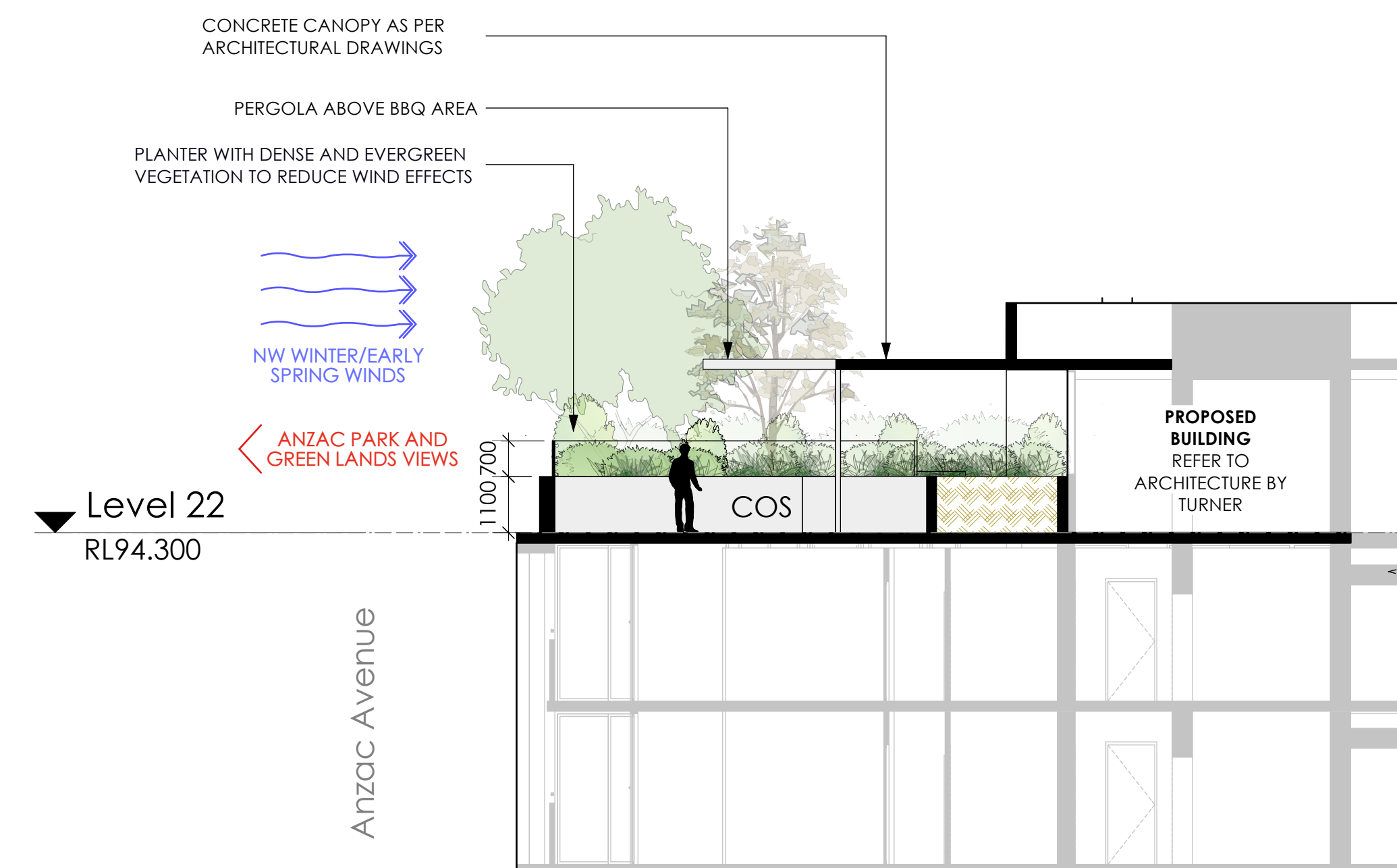
**SECTION AA - LEVEL 4 - COS**  
SCALE 1:100



**SECTION BB - LEVEL 4 - POS**  
SCALE 1:100



**SECTION CC - LEVEL 18 - COS**  
SCALE 1:100



**SECTION DD - LEVEL 22 - COS**  
SCALE 1:100

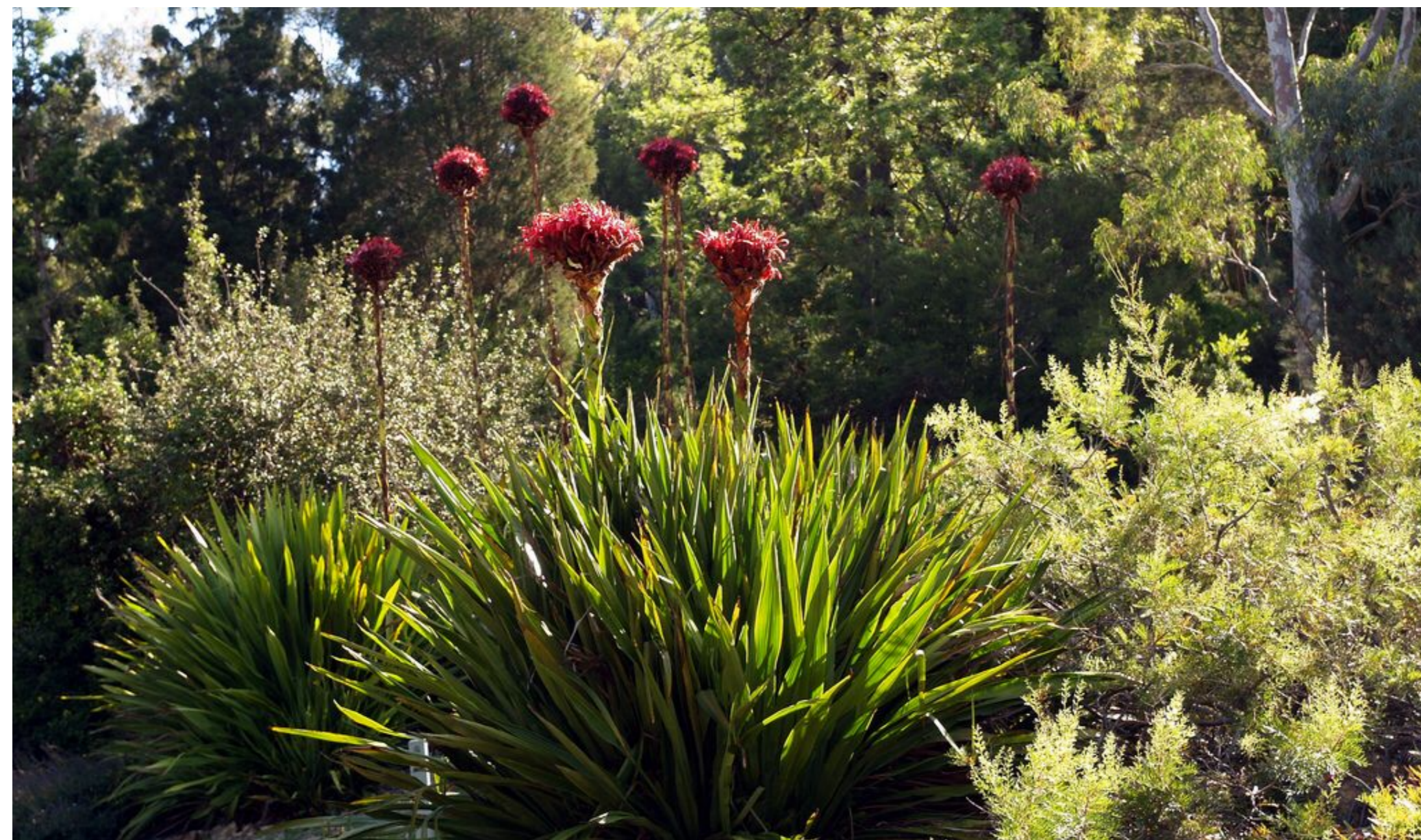
# LANDSCAPE PLANTING STRATEGY

The selection of species for the trees, shrubs and groundcovers within the development has considered numerous factors such as:

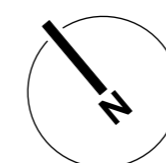
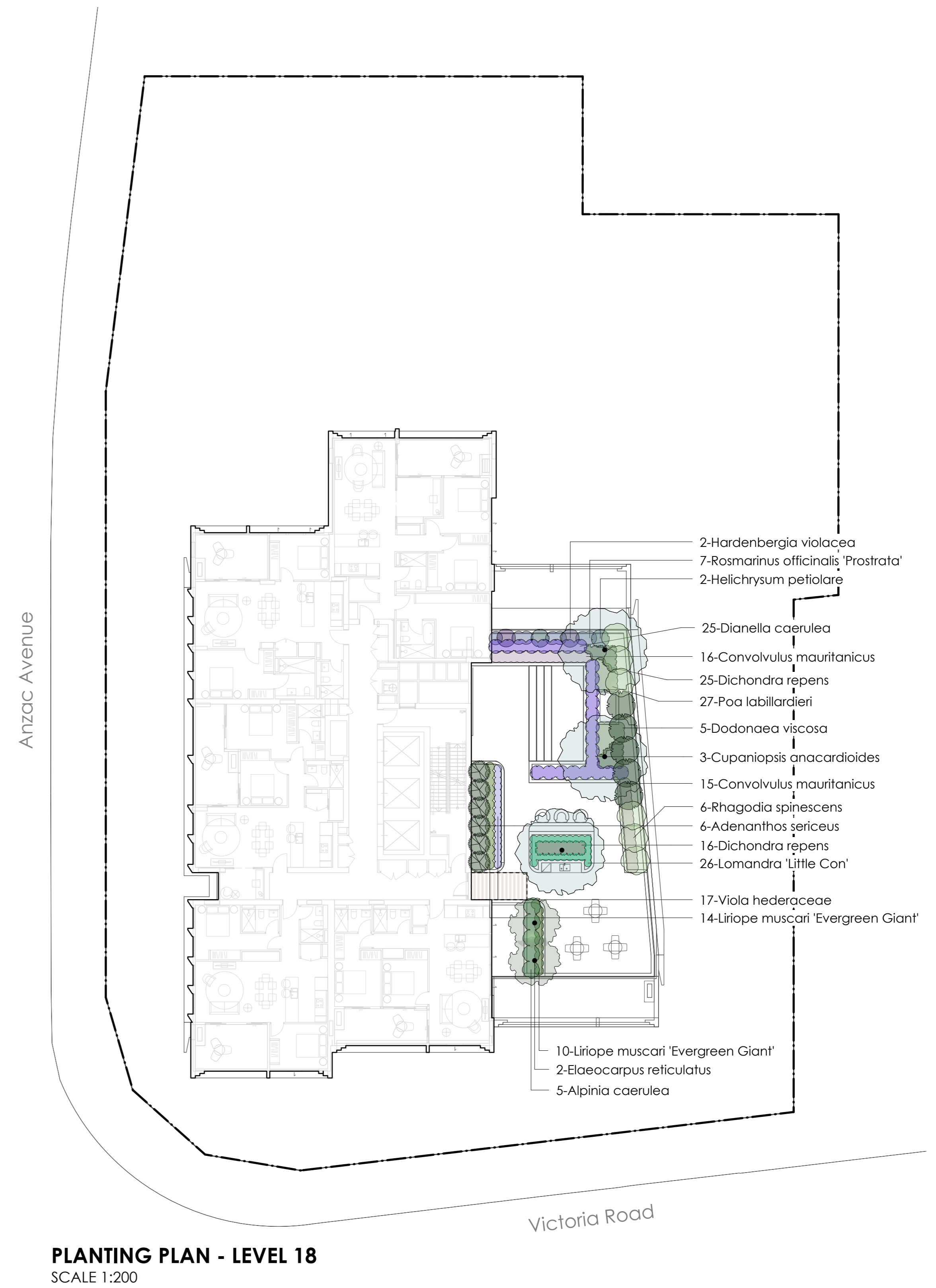
- Biodiversity values
- Climate/microclimate
- Local plant community
- Aboriginal heritage/significance
- Form & function
- Endemic, native & exotic
- Maintenance
- Other considerations include softening the building form of the development, CPTED, available deep soil zones, basements, proximity to adjacent developments, substations, etc.

The ground floor comprises deep soil areas and planter boxes along the street frontages to provide a passive landscaped setting for the development. Generally, plant species have been selected because they are ideally suited to the local microclimate, provide habitat for birds and microfauna, and are drought tolerant. Planting within the deep soil zones to the north will include native tree species such as Spotted Gum (*Corymbia maculata*), as well as entirely native shrub and groundcover species, and will provide habitat for local birds and insects that contribute to the local area's ecology. A mixture of native and exotic species along the western and southern frontages is proposed, considering solar access to these areas. Planting is limited to shallow-rooted species within Sydney Water's easement. A predominantly native plant palette is used to reflect its proximity to Anzac Park.

The level 4, level 18, and level 22 podiums are bordered by expansive planter boxes that include a mix of native and exotic trees, shrubs, groundcovers, and cascading plants that respond to the micro-climate on each level. The mix of trees and shrubs planted across these levels acts as a wind buffer, creates a comfortable and sheltered environment for residents within the communal open spaces, provides shade in summer, and provides privacy where adjoining private open spaces meet. A variety of cascading plants have been utilised along the outer perimeter to soften the built form of the development. Other low-level plant species used throughout will enhance the vibrancy and amenity of the communal open spaces and allow views to the CBD, Parramatta River, and Anzac Park.



# LANDSCAPE PLANTING STRATEGY



# LANDSCAPE PLANTING STRATEGY



**PLANTING PLAN - LEVEL 22**  
SCALE 1:200

## PLANTING SCHEDULE

ID	Qty	Botanical Name	Common Name	Scheduled Size	Height	Spread
<b>Trees</b>						
BCM	11	<i>Backhousia citriodora</i>	Lemon Myrtle	75lt	4500	3500
CML	2	<i>Carymbia maculata</i>	Spotted Gum	75lt	15000	10000
EL	5	<i>Cupaniopsis anacardioides</i>	Tuckeroo	75lt	8000	6000
EL	14	<i>Elaeocarpus reticulatus</i>	Blueberry Ash	75lt	12000	3500
Ergd	8	<i>Elaeocarpus reticulatus 'Green Dream'</i>	Green Dream Blue Berry Ash	75lt	3000	2000
MoFB	4	<i>Magnolia hybrid 'Fairy Blush'</i>	Fairy Blush Magnolia	75lt	3000	2500
OETU	7	<i>Olea europaea 'Tolleys Upright'</i>	Olive tree	75lt	7000	4000
Wf	4	<i>Waterhousea floribunda</i>	Weeping Lilly Pilly	75lt	8000	7000
<b>Shrubs</b>						
ASe	9	<i>Adenanthos sericeus</i>	Wolly Bush	200mm	2000	1500
AlCa	37	<i>Alpinia caerulea</i>	Native Ginger	200mm	1500	1200
ACi	94	<i>Arthropodium cirratum</i>	Renga Renga Lily	200mm	800	800
Bssa	18	<i>Banksia spinulosa</i>	Hairpin Banksia	200mm	800	500
WFBG	27	<i>Correa alba</i>	White Correa	200mm	1200	1200
DDV	16	<i>Dodonaea viscosa</i>	Hop Bush	200mm	3000	2000
DE	12	<i>Doryanthes excelsa</i>	Gymea Lily	300mm	2500	3000
IA	33	<i>Indigofera australis</i>	Australian Indigo	200mm	2000	1500
OD	31	<i>Ozothamnus diosmitolius</i>	Everlasting	200mm	2000	1000
PX	53	<i>Philodendron 'Xanadu'</i>	Xanadu	200mm	1000	1000
RhSp	14	<i>Rhagodia spinescens</i>	Saltbush	200mm	1500	---
WFBG	19	<i>Westringia 'Blue Gem'</i>	Coastal Rosemary	200mm	1200	1200
<b>Grasses</b>						
AB	22	<i>Anigozanthos 'Bush Gem' - Bush Ruby</i>	Kangaroo Paw	140mm	800	400
ACG	14	<i>Anigozanthos 'Cross of Gold'</i>	Cross of Gold	140mm	900	600
ALL-I	18	<i>Anigozanthos 'Landscape Lime'</i>	Green Kangaroo Paw	140mm	900	600
AuCa	29	<i>Austrodanthonia caespitosa</i>	Common Wallaby-grass	140mm	400	500
DC	47	<i>Dianella caerulea</i>	Blue Flax Lily	140mm	1000	1000
DRev	59	<i>Dianella revoluta</i>	Mauve Flax Lily	140mm	500	500
DiCr	125	<i>Dichelachne crinita</i>	Longhair Plume Grass	140mm	1000	450
LmEG	208	<i>Liriope muscari 'Evergreen Giant'</i>	Evergreen Giant Lily Turf	140mm	600	600
LoLC	82	<i>Lomandra 'Little Con'</i>	Dwarf Lomandra	140mm	500	500
LoSe-I	109	<i>Lomandra 'Tanika'</i>	Lomandra	140mm	500	600
LL	60	<i>Lomandra longifolia</i>	Native Grass	Tube/140mm	900	1500
DRE	27	<i>Poa labillardieri</i>	Tussock Grass	140mm	1000	700
PPK	20	<i>Poa poliformis 'Kingsdale'</i>	Kingsdale Poa	140mm	450	450
<b>Climbers</b>						
HV	26	<i>Hardenbergia violacea</i>	Flase Sarsparilla	140mm	400	1200
HSc	97	<i>Hibbertia scandens</i>	Climbing Guinea Flower	140mm	350	1000
PJa	13	<i>Pandorea jasminoides</i>	Bower Vine	140mm	4000	2000
<b>Ground Covers</b>						
BMu	20	<i>Brachyscome multifida</i>	Cut Leaf Daisy	140mm	300	600
CAp	25	<i>Chrysocephalum apiculatum</i>	Everlasting Daisy	140mm	600	800
CM	52	<i>Convolvulus mauritanicus</i>	Convolvulus	140mm	150	800
DaDi	61	<i>Dampiera diversifolia</i>	Kangaroo Lobelia	140mm	800	750
DRE	41	<i>Dichandra repens</i>	Kidney Weed	140mm	100	600
GPR	13	<i>Grevillea 'Poorinda Royal Mantle'</i>	Poorinda Royal Mantle	140mm	200	1500
HPL	27	<i>Helichrysum petiolare</i>	Licorice Plant	140mm	1000	1200
MYOP	104	<i>Myoporum parvifolium</i>	Carpet Spreading Myoporum	140mm	300	800
ROPr	99	<i>Rosmarinus officinalis 'Prostrata'</i>	Rosemary 'Prostrata'	140mm	300	900
ScAe	27	<i>Scaevola aemula 'Aussie Crawl'</i>	Blue Fanflower	140mm	500	1000
VH	380	<i>Viola hederaceae</i>	Native Violets	140mm	200	500

- AUSTRALIAN NATIVE PLANT SPECIES
- LOCAL ENDEMIC SPECIES AS PER CITY OF RYDE COUNCIL TREE PLANTING LIST
- ENDEMIC PLANT SPECIES TO THE BLUE GUM HIGH FOREST

# LANDSCAPE PLANTING PALETTE

## TREES



*Backhousia citriodora*



*Corymbia maculata*



*Cupaniopsis anacardioides*



*Elaeocarpus reticulatus*



*Elaeocarpus reticulatus* 'Green Dream'



*Magnolia hybrid* 'Fairy Blush'



*Olea europaea* 'Tolleys upright'



*Waterhousea floribunda*

# LANDSCAPE PLANTING PALETTE

## SHRUBS

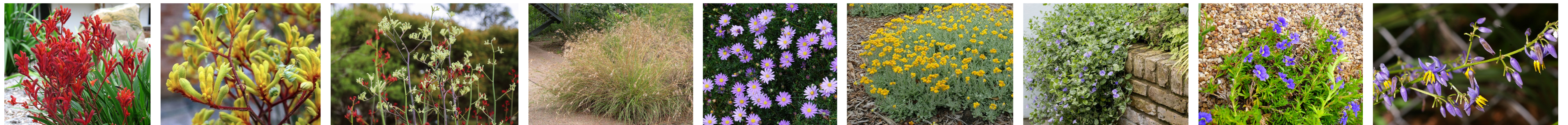


*Adenanthos sericeus*   *Alpinia caerulea*   *Arthropodium cirratum*   *Banksia spinulosa*   *Correa alba*   *Dodonaea viscosa*



*Doryanthes excelsa*   *Indigofera australis*   *Ozothamnus diosmifolius*   *Philodendron 'Xanadu'*   *Rhagodia spinescens*   *Westringia 'Blue Gem'*

## GROUNDCOVERS



*Anigozanthos 'Bush Gem'*   *Anigozanthos 'Cross of Gold'*   *Anigozanthos 'Landscape Lime'*   *Austrodanthonia caespitosa*   *Brachyscome multifida*   *Chrysocephalum apiculatum*   *Convolvulus mauritanicus*   *Dampiera diversifolia*   *Dianella caerulea*



*Dianella revoluta*   *Dichelachne crinita*   *Dichondra repens*   *Grevillea 'Poorinda Royal Mantle'*   *Hardenbergia violacea*   *Helichrysum petiolare*   *Hibbertia scandens*   *Liriope muscari 'Evergreen Giant'*   *Lomandra 'Little Con'*



*Lomandra longifolia*   *Lomandra 'Tanika'*   *Myoporum parvifolium*   *Pandorea jasminoides*   *Poa labillardieri*   *Poa poliformis 'Kingsdale'*   *Rosmarinus officinalis 'Prostrata'*   *Scaevola aemula 'Aussie Crawl'*   *Viola hederaceae*

atc  
a total concept landscape architects

65 west street, north sydney nsw 2060  
ph: (02) 9957 5122  
e: [design@atotalconcept.com.au](mailto:design@atotalconcept.com.au)  
w: [www.atotalconcept.com.au](http://www.atotalconcept.com.au)