



**GENERAL NOTES**  
 ALL DIMENSIONS AND EXISTING CONDITIONS SHALL BE CHECKED AND VERIFIED BY THE CONTRACTOR BEFORE PROCEEDING WITH THE WORK  
 ALL LEVELS RELATIVE TO AUSTRALIAN HEIGHT DATUM  
 DO NOT SCALE DRAWINGS  
 USE FIGURED DIMENSIONS ONLY

**GENERAL PROPOSED REFURBISHMENT**

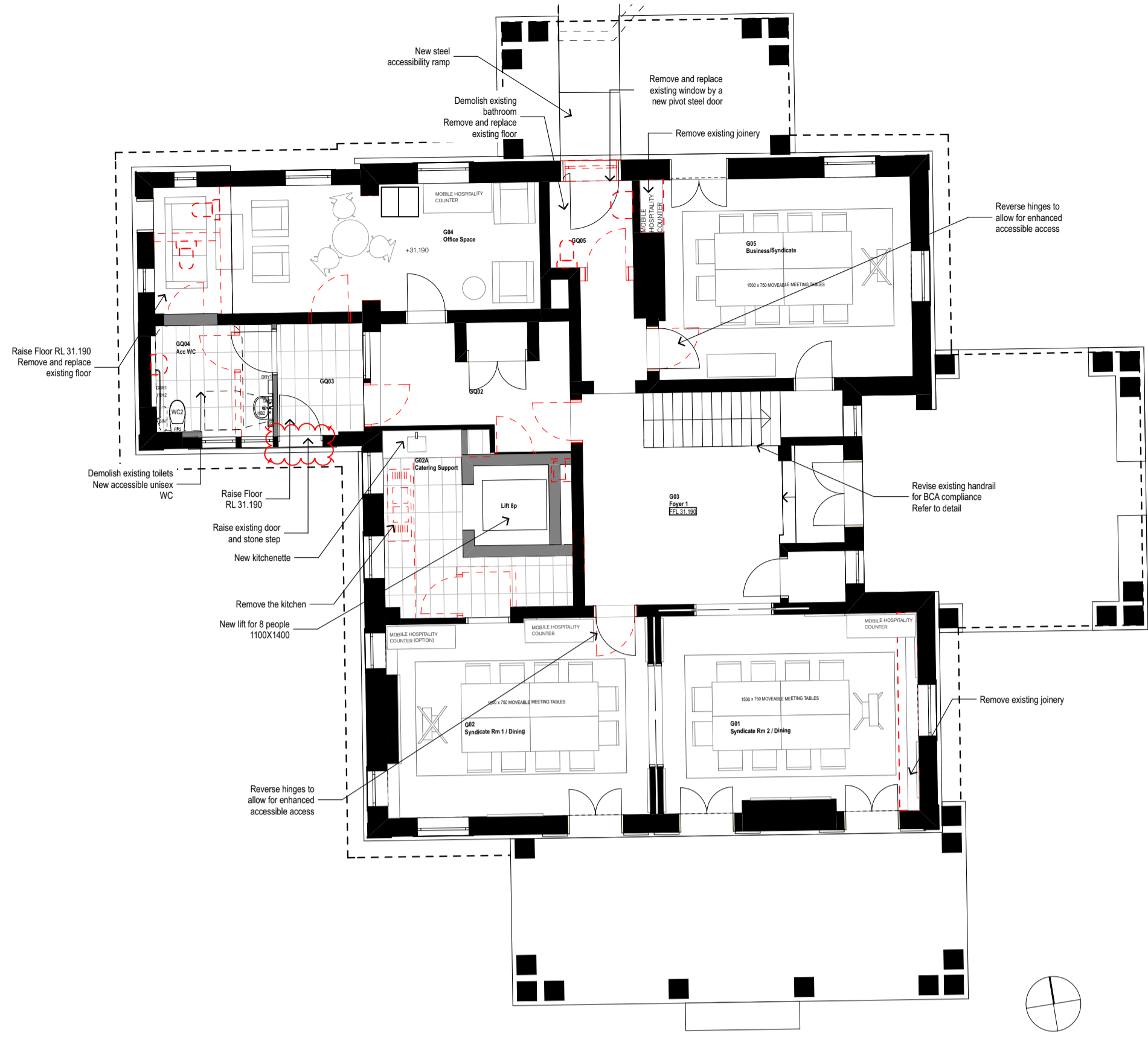
**FLOOR FINISH**  
 Reinstate timber floorboards throughout.

**LIGHTING**  
 Replace existing (non heritage) fittings. Patch and repair ceiling where required. Install a combination of suspended and wall hung light fittings.

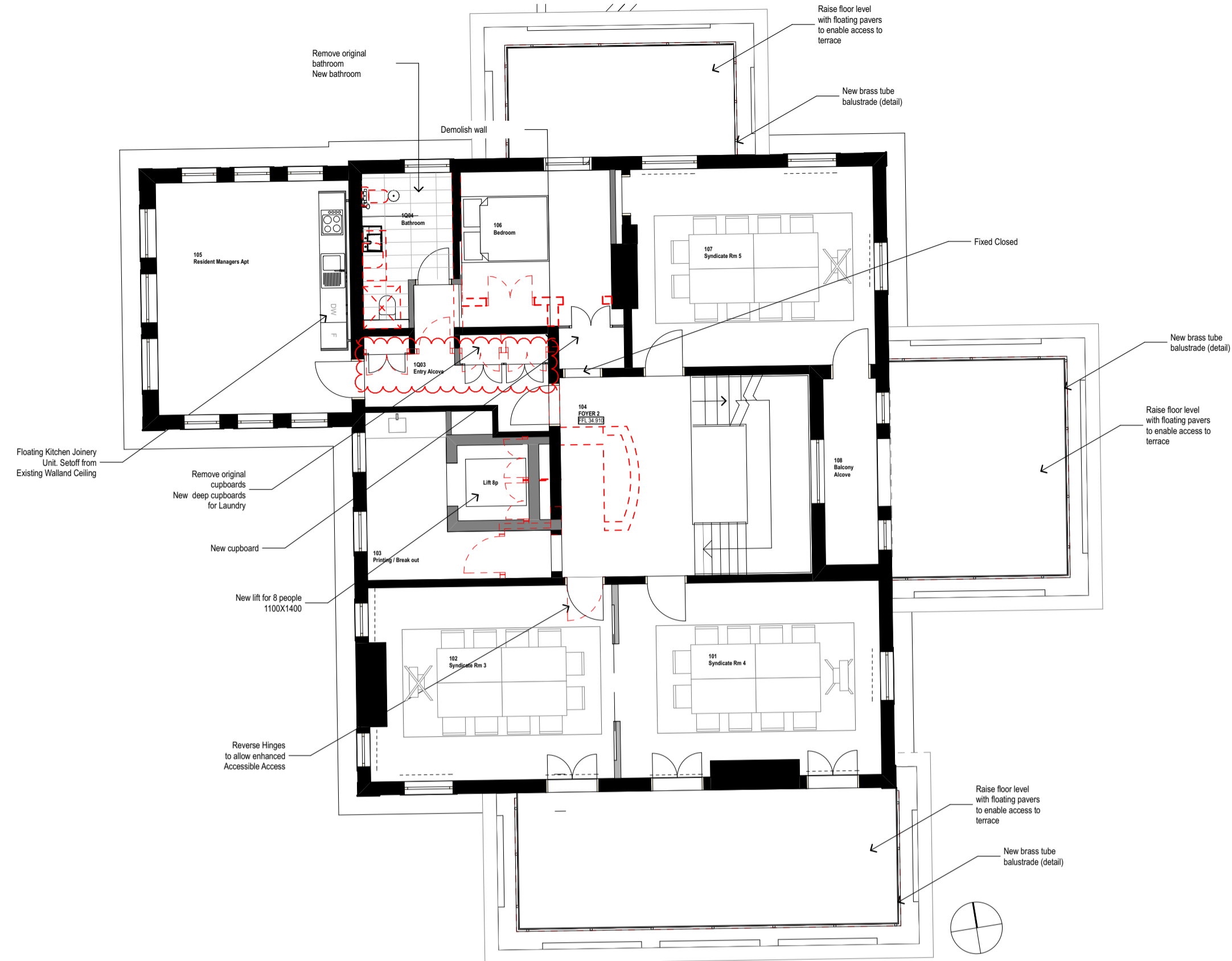
**FIRE PLACES**  
 Restore to original condition. Install gas fire heaters.

**SERVICES**  
 Remove all surface mounted AC units. Relocate skirting mounted electrical outlets to walls. Chase and patch walls. Patch and repair skirting to original condition.

**PROPOSED DEMOLITION**



PLAN Ground Floor 1:100



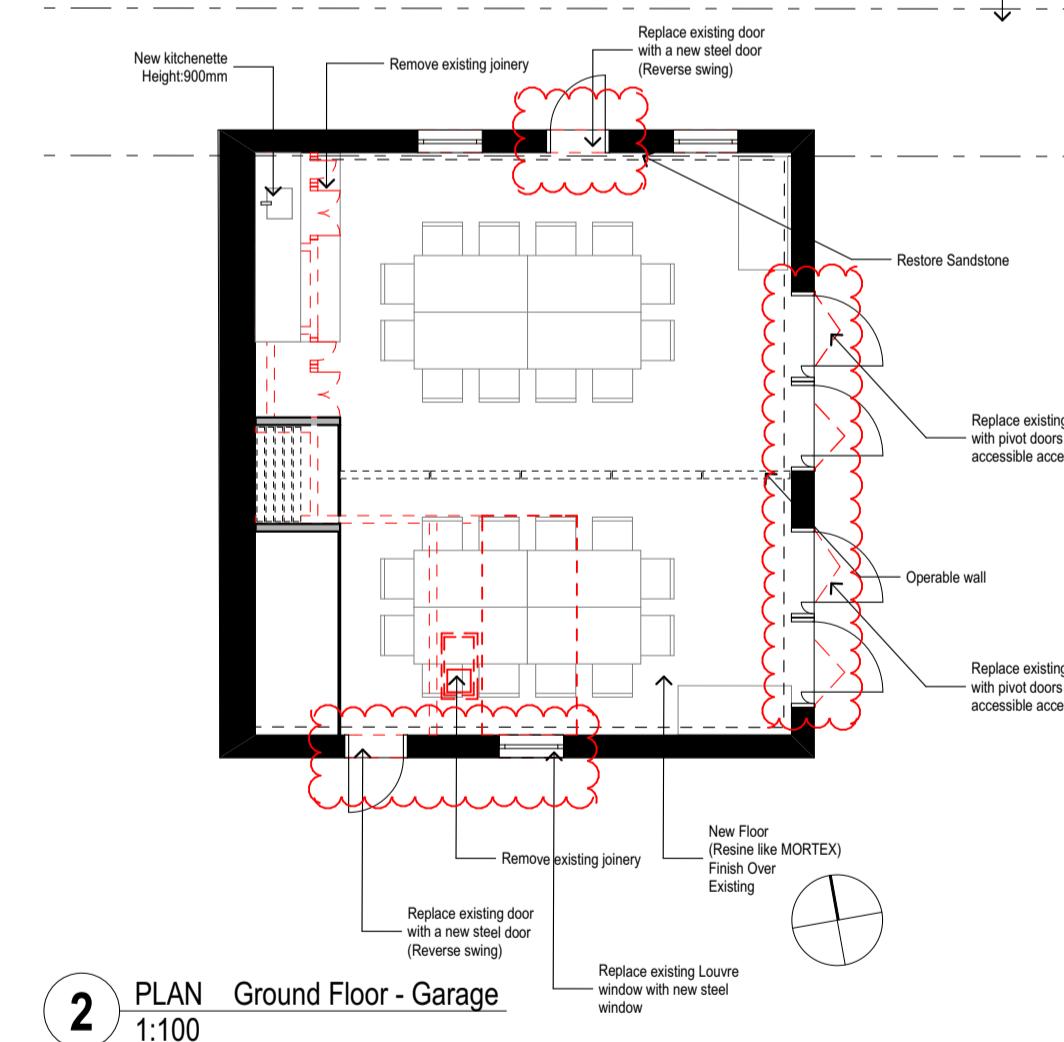
PLAN Level 1 1:100



ELEVATION 1:100



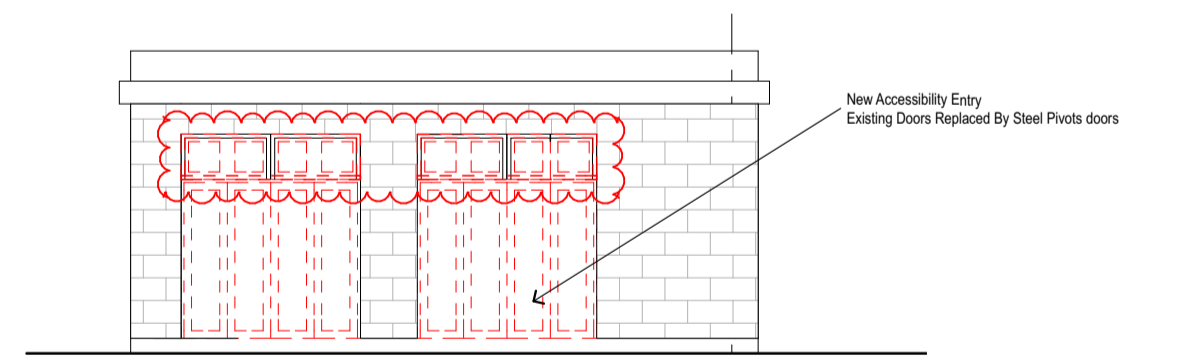
1 DETAIL Photo - Existing Elevation



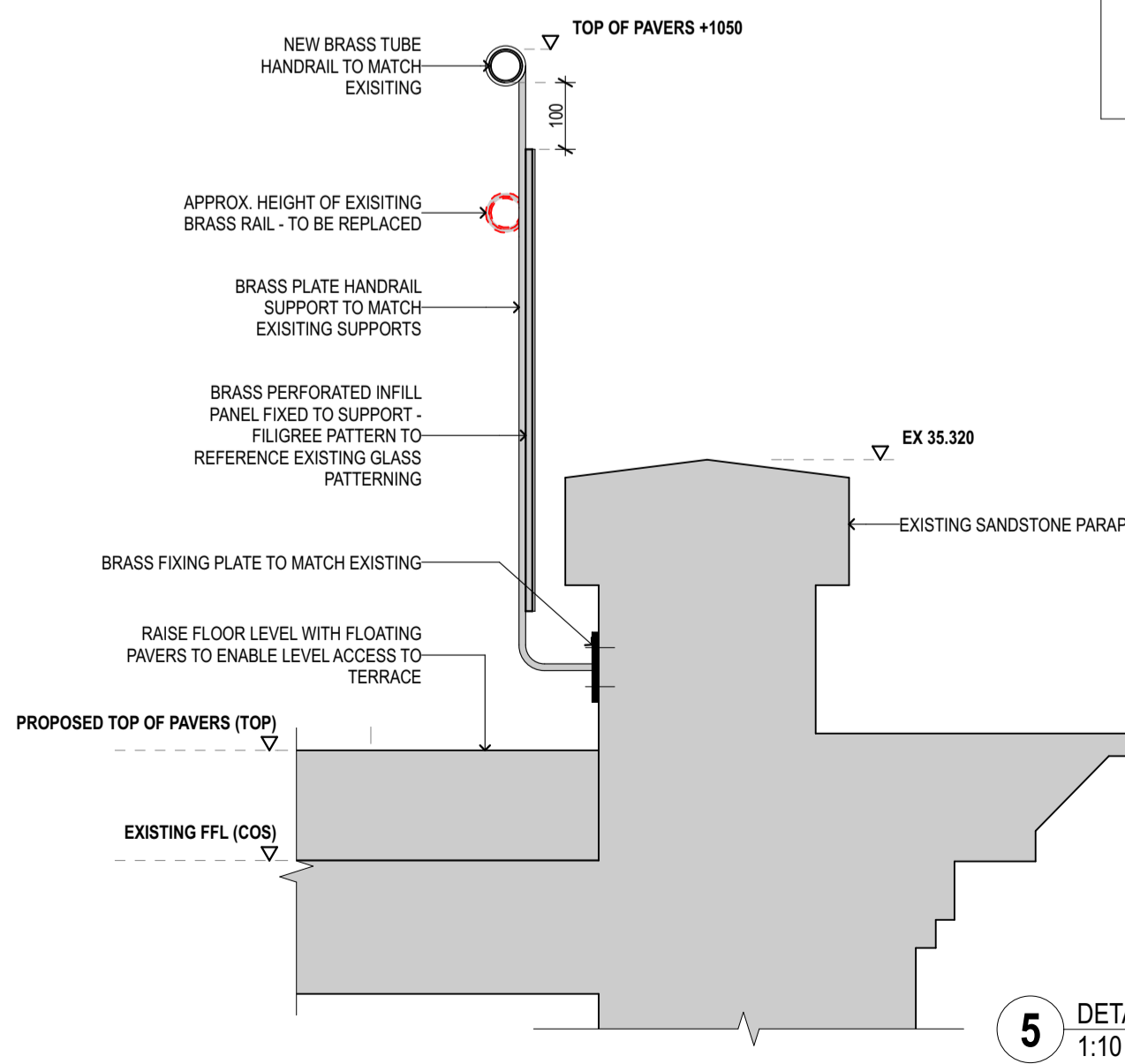
2 PLAN Ground Floor - Garage 1:100



3 DETAIL Photo - Existing Elevation



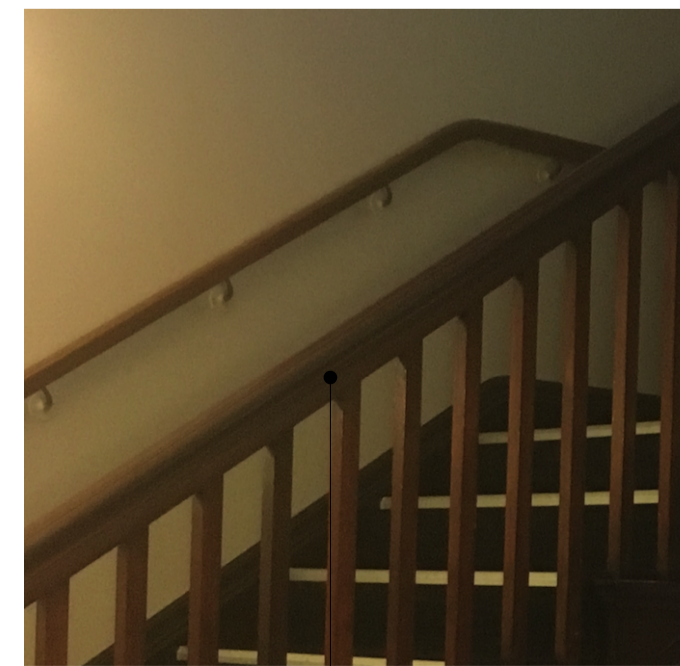
4 PLAN CC3 East Elevation-Demolition 1:100



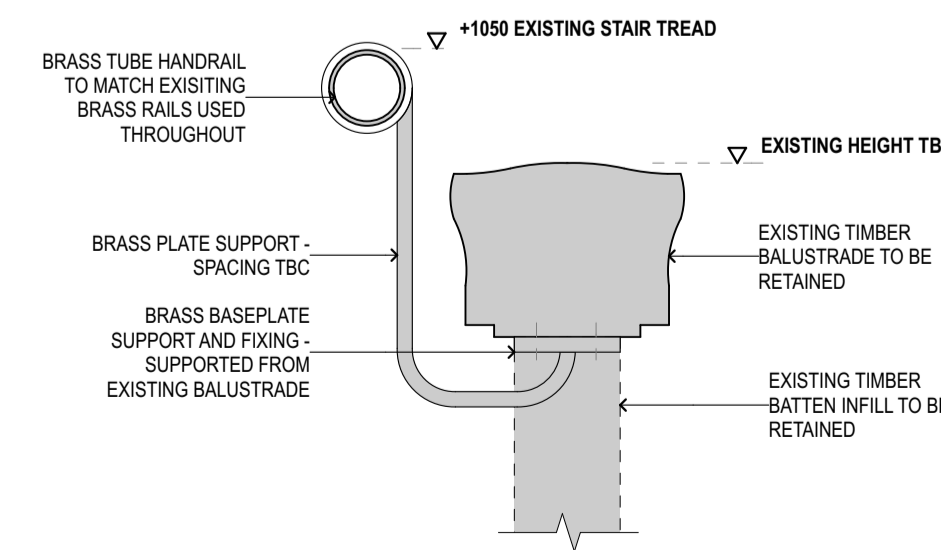
5 DETAIL Heritage Handrail 1:100



6 DETAIL Photo - Existing Handrail



7 DETAIL Photo - Existing Handrail



8 DETAIL Heritage Handrail 1:5

rev	date	name	by	chk
B	26/9/17	RTS		AWY
A	4/5/17	SSD		AWY

fjmt studio architecture interiors landscape urban community  
 sydney melbourne uk  
 Level 5, 70 King Street +61 2 9251 7077 www.fjmtstudio.com



project  
**UNSW CLIFFBROOK ESTATE**  
 45 Beach Street  
 Coogee, Sydney NSW 2034

title  
**General Arrangement Plans**  
**Heritage Refurbishment**

scale	1:200 @ A1	first issued	4/5/17
project code	UNSWCCR	sheet no.	2006
revision			B