

# 13.0 Facade and Materiality

## 13.1 Facades and Building Articulation

The new complex is conceived as a series of landscaped terraces which gently wrap around Cliffbrook House and extend out into the landscaped eastern portion of the site.

The response is contextual, with each elevation responding to the specific character of the adjacent urban fabric. For example the elevation along Battery Street, is appropriately scaled to respond to the smaller lot sizes and the finer grain of the residential street, whereas the landscaped elevated accessways to the upper levels echo the sweeping curves of the surrounding coastline.

## 13.2 Materials and Colours

The inspiration for the materiality of the new complex comes from both the natural landscape and Cliffbrook House.

The palette of materials is consistent with the objectives of the Randwick Council DCP: Foreshore Scenic Protection Area with the exterior colour scheme complementing the natural elements in the coastal areas and the significant heritage items on the site.

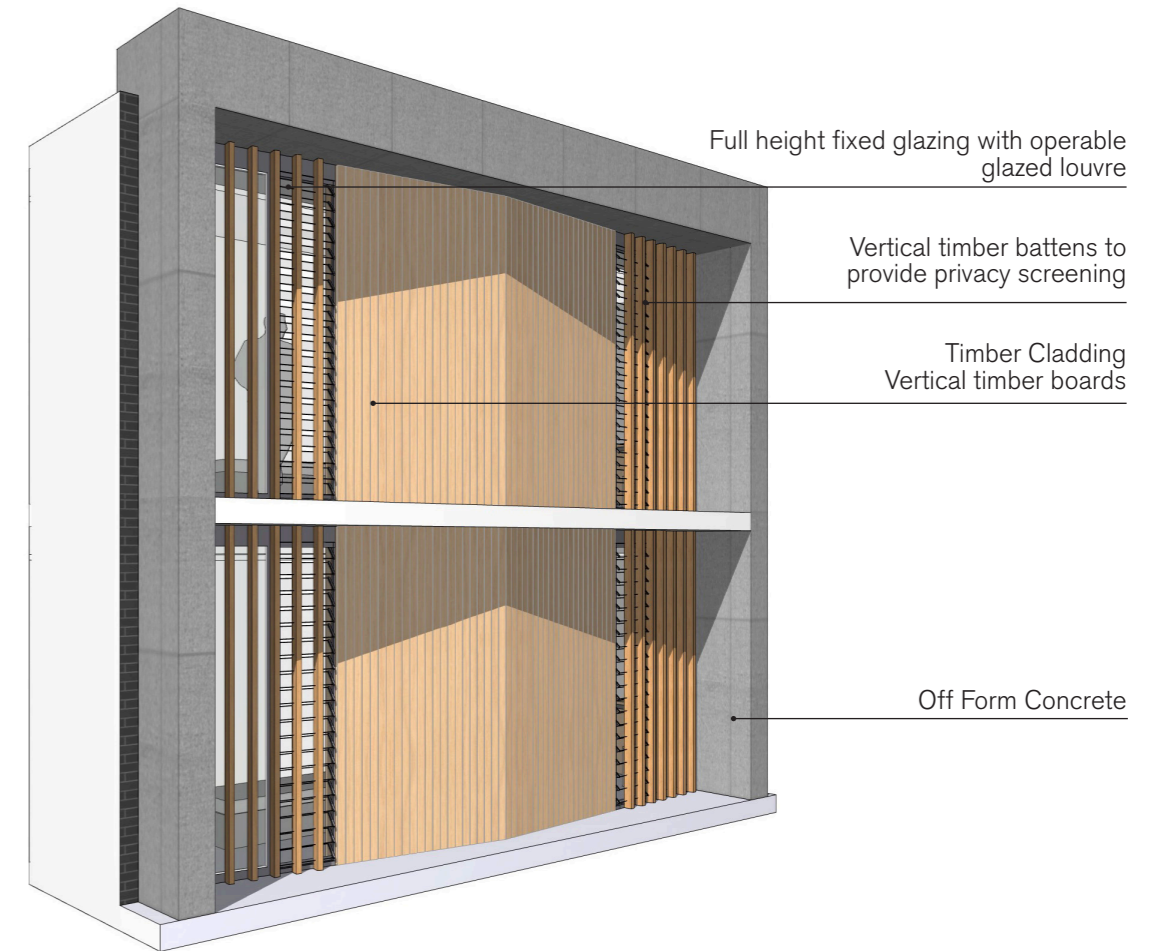
The colour palette predominantly consists of light toned neutral hues - off form concrete and natural timber battens and boards. The dark liver brickwork of Cliffbrook House is referenced in the brickwork blade walls and sandstone landscape walls and paving are integrated into the landscape design.

Clear glazing with either exposed powder coat or concealed aluminium framing will be used to protect the internal walkways to maximise views both from and to the site. It is the intention that the circulation around each level is extremely visible to foster collaboration between the participants. Materials are selected for their durability, selected to withstand deterioration and weathering accelerated by the coastal conditions and where practical finish is final colour.

The roof forms are deliberately recessive with a mid to light toned coated colorbond steel pan sheet to meet environment requirements.

Facade Types  
Four main facade types have been identified

## FT01 Residential Facade



### Materiality Reference Images

#### Concrete



#### Fibre Reinforced Plastic

