

Principle 07

7.7 Geometry and address

Objectives

- Understand the importance of the setting of Cliffbrook House to provide cues for site organisation.



Principle 08

7.8 Legibility and Identity

Objectives

- Provide a clear and legible organisation to assist way-finding, orientation and UNSW identity.

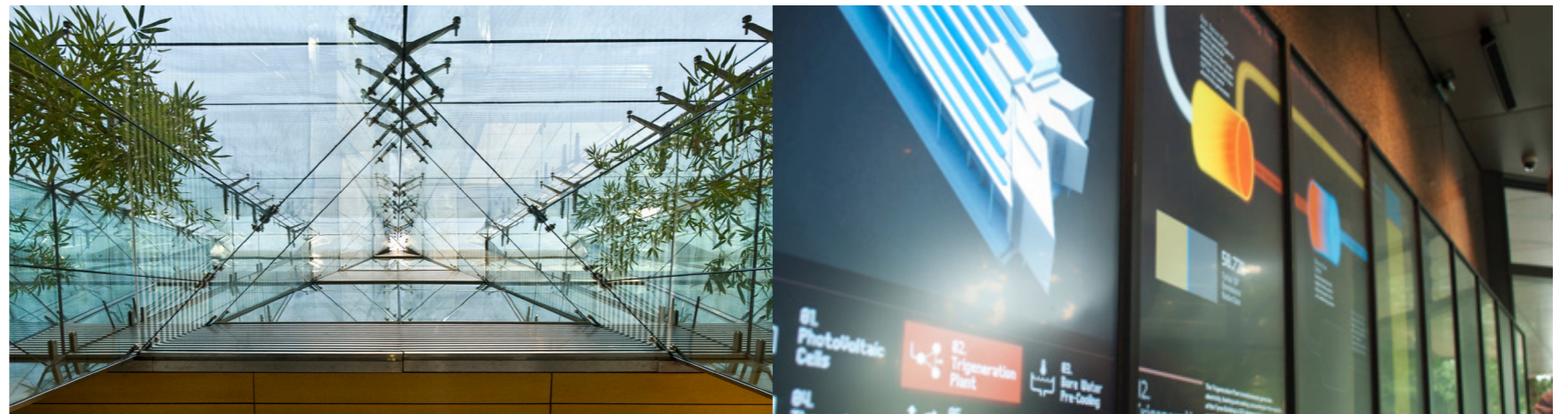


Principle 09

7.9 Sustainability and Innovation

Objectives

- Harness the natural potential of the site to provide a highly sustainable approach which is communicated through both passive design, building systems and the realisation of the design.
- Consideration in the selection of services systems to provide value in life cycle costing.
- Consideration of material selection for durability and appropriateness for the marine environment.
- “Future proofing”
- Biophilic Design - connection to nature
- Health and wellbeing



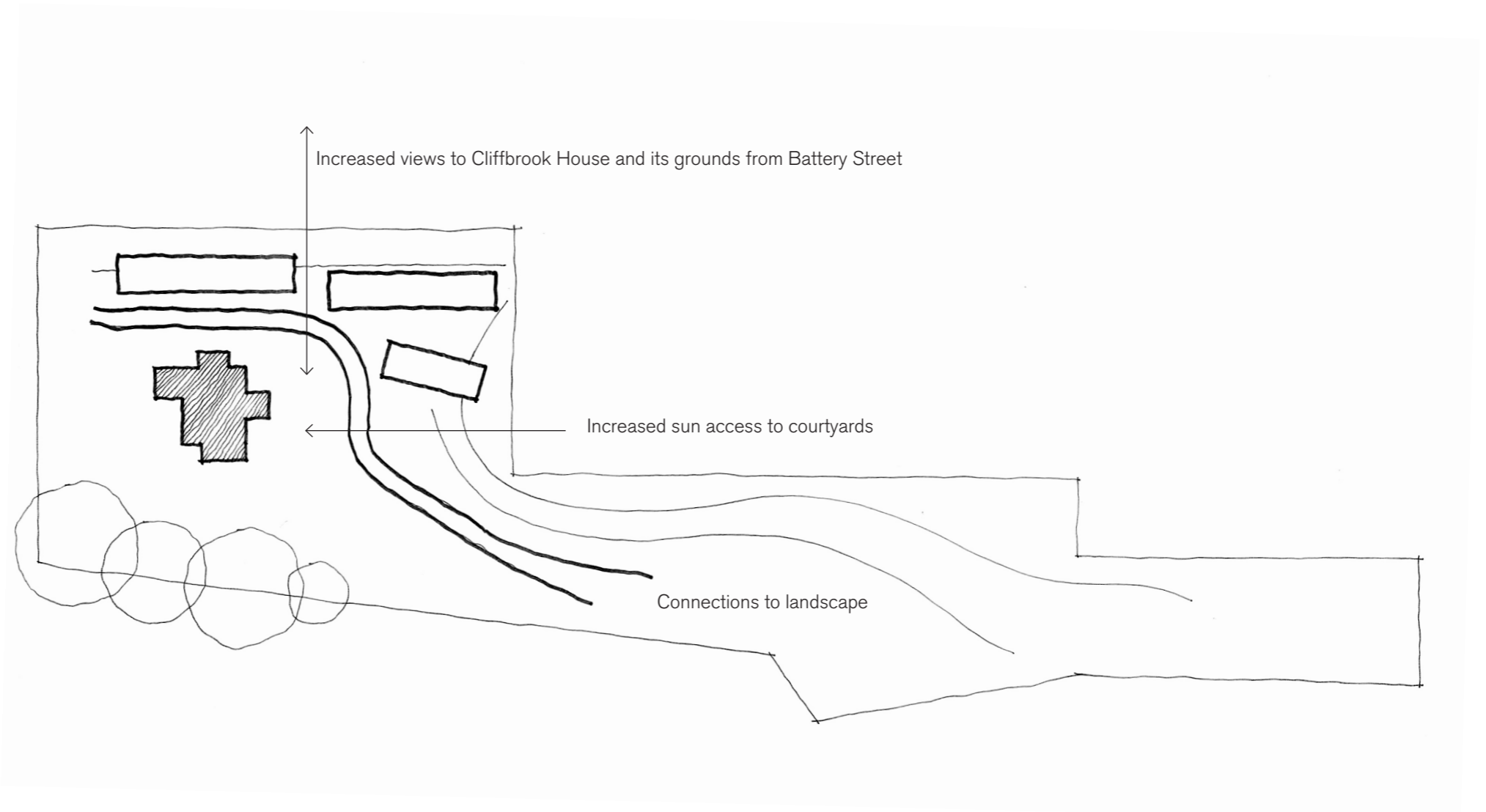
8.0 Conceptual Form

A conceptual approach has been developed referencing the Design Principles and the initial Site Strategies.

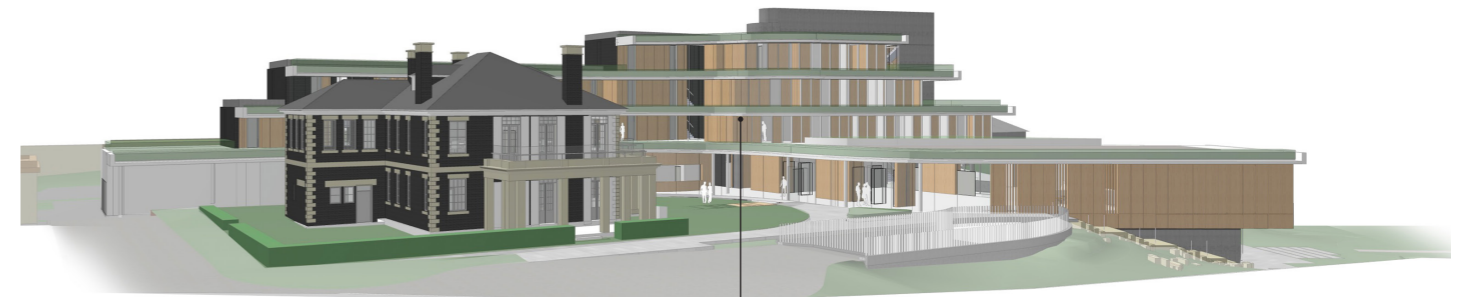
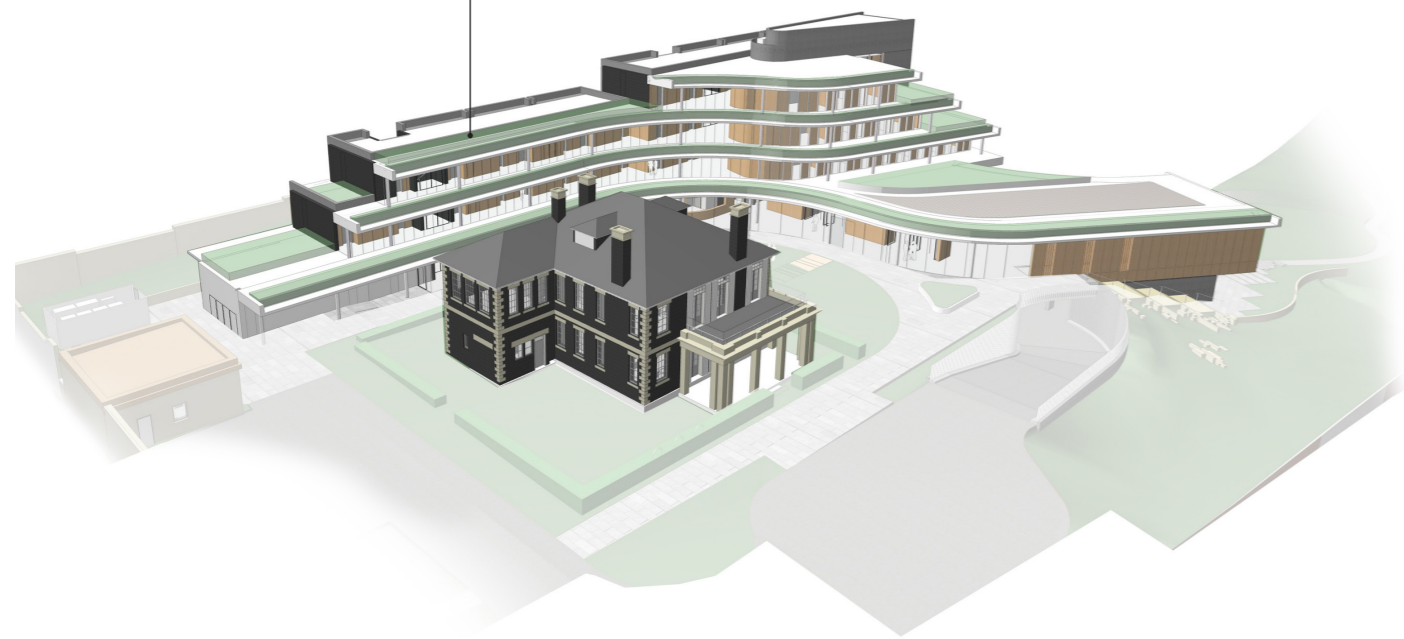
The two most compelling aspects of the site is the heritage qualities and significance of Cliffbrook House and the landscape of the eastern portion of the site. The development of any concepts for the site, should draw upon these two aspects.

The design concept is expressed as three specific responses:

- The "base" or "ground plane" of the site is conceptually realised as a manipulated ground plane, formed out of the coastal rocky escarpments, echoing the natural curved forms of Gordons Bay.
- The fluid, curved "leaf like" forms hover above the landscape providing a softening of the scale of the massing, allowing light, air and views to penetrate. Each form is protected by a brickwork wall complementary to the brickwork of Cliffbrook House.
- A series of lightweight and semi transparent walkways and stairs provide transition between the lower and the upper levels



Landscaped terraces "rocky escarpments"



Curved open walkways

