

TRAFFIC ENGINEER
ARUP
ph: (02) 9320 9320

SERVICES ENGINEER
ERBAS AND ASSOCIATES
ph: (02) 9437 1022

FIRE ENGINEER
STEPHEN GRUBITS & ASSOC.
ph: (02) 9247 1444

CIVIL AND STRUCTURAL ENGINEER
BIRZULIS ASSOCIATES
ph: (02) 9555 7230

BCA CONSULTANT
MBC
ph: (02) 9939 1530

QUANTITY SURVEYOR
WILD AND WOOLLARD
ph: (02) 9411 2777

PROJECT MANAGER
SAVILLS
ph: (02) 8215 8888

ISSUE	No.	Date	Description	Chkd
1	1	19.05.2021	ISSUED FOR CONSTRUCTION	NBRS
2	2	30.06.2021	ISSUED FOR REVIEW	NBRS
3	3	12.08.2021	ISSUED FOR CONSTRUCTION	NBRS
4	4	17.11.2021	FOR INFORMATION	NBRS

Sydney
61 2 9922 2344
nbrsarchitecture.com

Any form of replication of this drawing in full or in part without the written permission of NBRS+PARTNERS Pty Ltd constitutes an infringement of the copyright.

Nominated Architect:
Andrew Duffin NSW S602
NBRS & Partners Pty Ltd VIC 51197
© 2020
ABN 16 002 247 565

Project
Lindfield Learning Centre

at
100 ETON RD, LINDFIELD NSW 2070

for
SCHOOL INFRASTRUCTURE NSW

Drawing Title

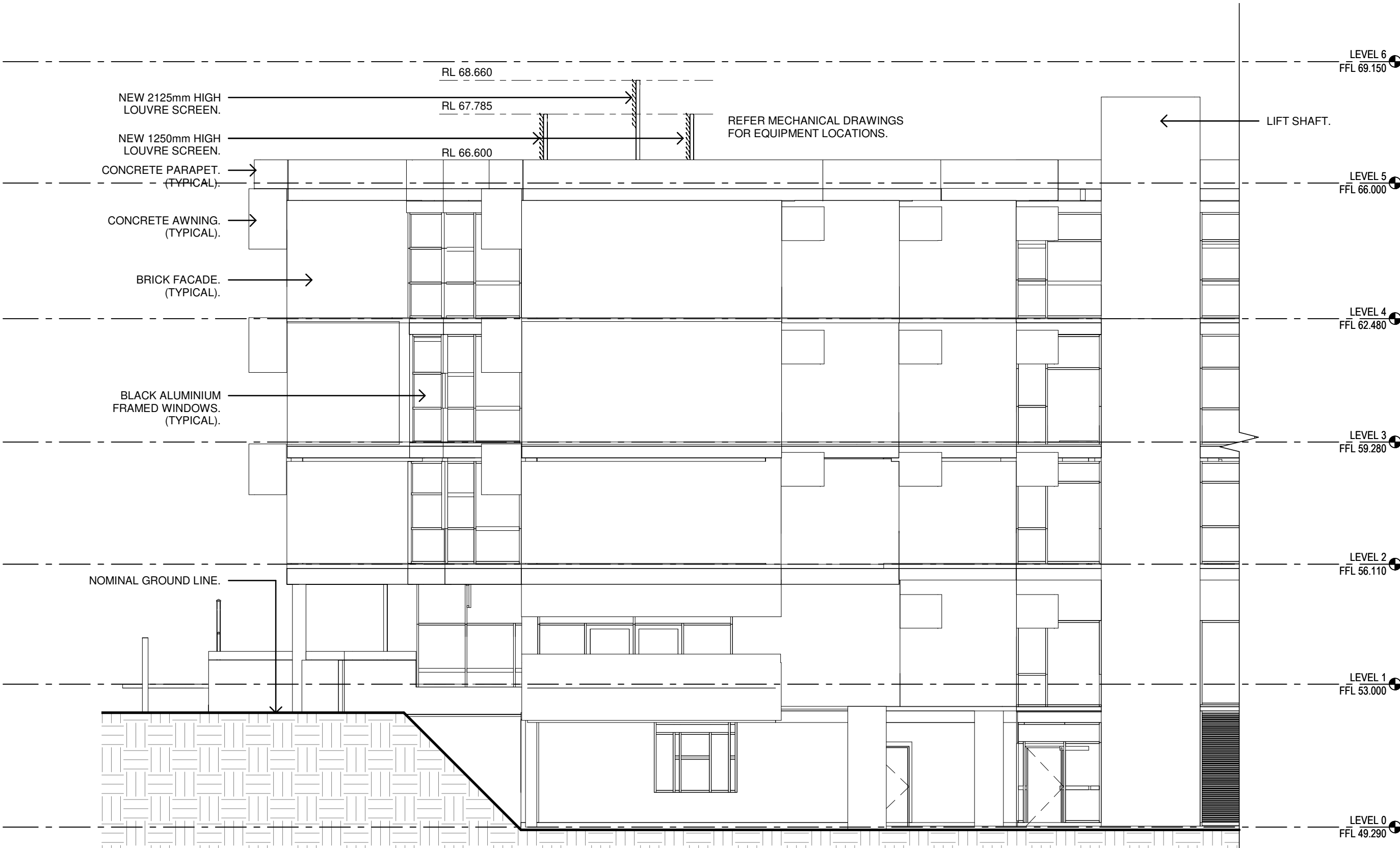
ROOFTOP PLANT SCREENS
ELEVATIONS

Date 18/11/2021 12:15:11 PM
Scale As indicated @ A1

Drawing Reference
AR-6111

Revision
4

0 10 20 30 40 50 60 70 80 90 100



1 ZONE H WEST ELEVATION
1 : 100



SITE PHOTO FROM NORTH



POWDERCOATING FINISH
FOR ALUMINIUM LOUVRES:

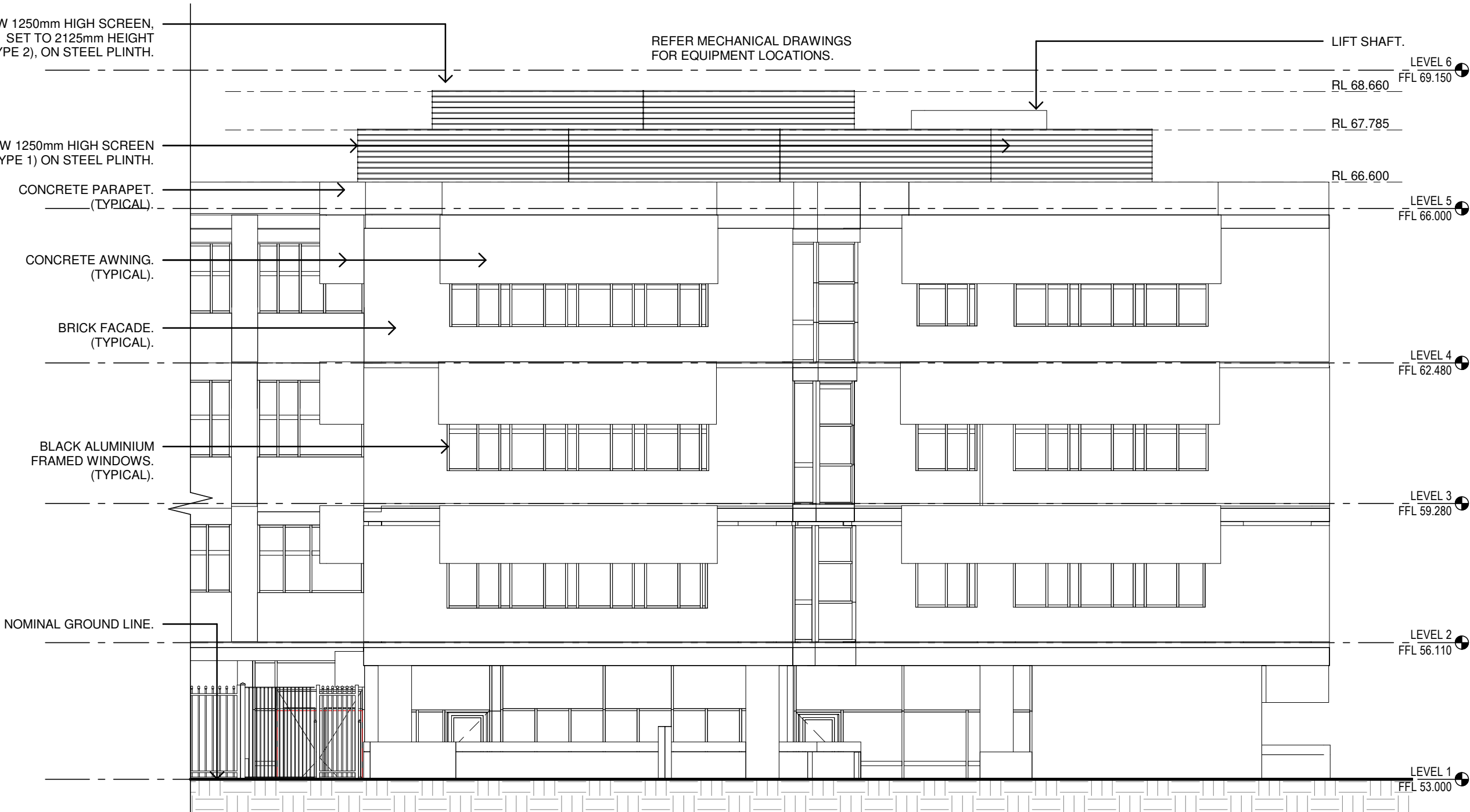
DULUX POWDERCOAT RANGE
ELECTRO - SHALE GREY
FLAT 9067/672F
DLX0419

FIXINGS AND LOUVRE
CARRIER FINISH:

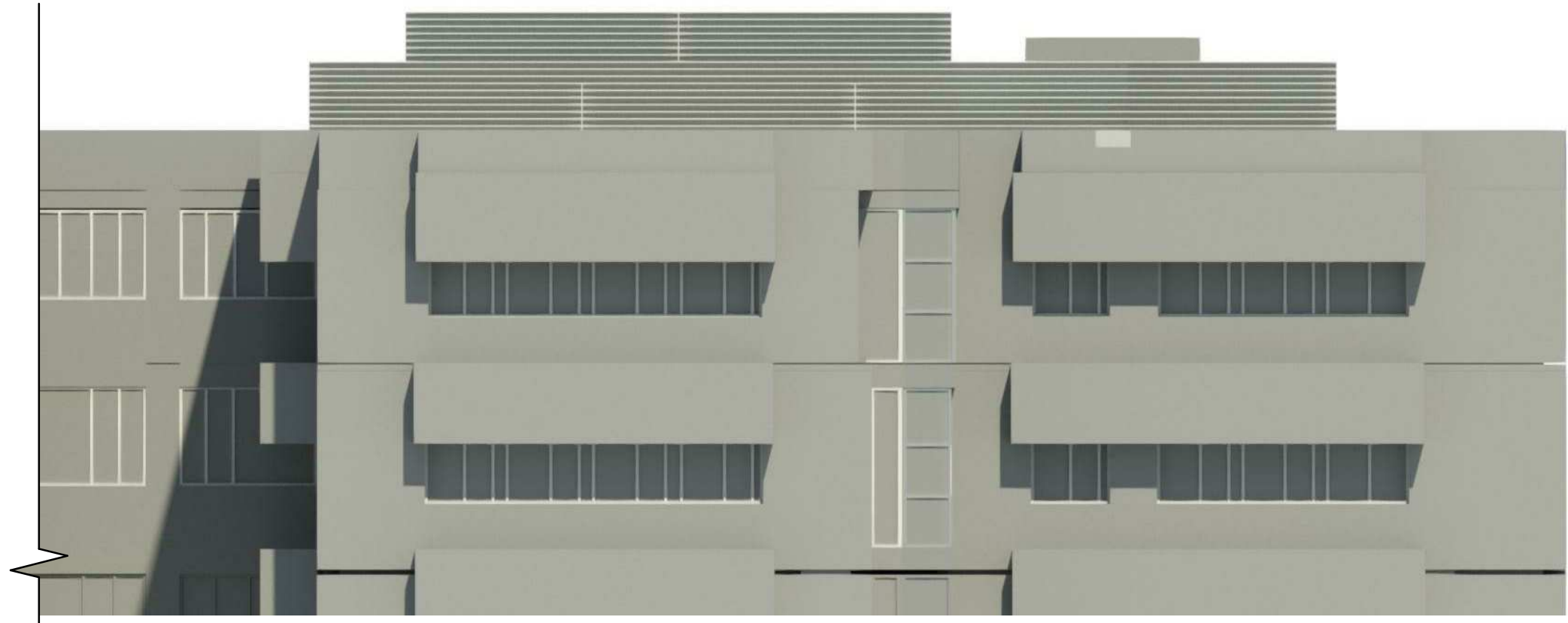
MATCH COLORBOND SHALE
GREY FLAT (MATTE).



4 BUILDING MODEL FROM NORTH WITH SCREENS
1 : 1



2 ZONE H NORTH ELEVATION
1 : 100



3 ZONE H NORTH ELEVATION RENDER
1 : 1



6 ARTISTIC IMPRESSION - VIEW FROM NORTH
1 : 1