

# BUSHFIRE EVACUATION PLAN SUMMARY

---

Lindfield Learning Village  
100 Eton Road, Lindfield



## EMERGENCY CONTACT INFORMATION

<b>FIRE, POLICE, AMBULANCE</b>	<b>CALL 000</b>
<b>PRINCIPAL</b>	Stephanie McConnell   0417 712 089
<b>DEPUTY PRINCIPAL</b>	Mark Burgess   0422 268 172
<b>HEALTH &amp; SAFETY DIRECTORATE</b>	Sus Lowe   1800 811 523 (Select Option 1)



## AWARENESS OF SITUATION

<b>RFS BUSH FIRE INFORMATION LINE</b>   1800 679 737
<b>RFS WEBSITE</b>   <a href="http://www.rfs.nsw.gov.au">www.rfs.nsw.gov.au</a>
<b>FIRES NEAR ME APPLICATION</b>



## LOCATION INFORMATION

<b>ADDRESS</b>	Lindfield Learning Village 100 Eton Road, Lindfield
<b>NUMBER OF STUDENTS</b>	350
<b>NUMBER OF STAFF</b>	30 - 50
<b>TOTAL STAFF / STUDENTS</b>	380 - 400
<b>OFF SITE EVACUATION</b>	Lindfield Public School, 218 Pacific Hwy, Lindfield   9416 1903



## ACTIONS

1. See Triggers for Evacuation (page 3)
2. Raise alarm & Call 000
3. Call Health & Safety Directorate & advise of bushfire emergency
4. All classes to report to Assembly Point
5. Complete rollcall
6. Activate shutters from main control panel
7. Determine bushfire threat
  - Activate communication protocols for parent notification
  - If unsafe, seek temporary refuge in Evacuation Assembly Point
8. Activate communication protocols for parent notification
9. Principal of Lindfield Public notified

# EVACUATION



## THE SAFEST OPTION IS TO LEAVE EARLY

Authority to evacuate can be directed by:

- Instructions from the NSW Police or Fire Authority (NSW Rural Fire Service or Fire and Rescue NSW)
- Instruction from NSW Department of Education authorised officer;
- Instruction from Director, Educational Leadership
- Instruction from Director, Educational Leadership

Evacuate if directed & it is safe to do so.

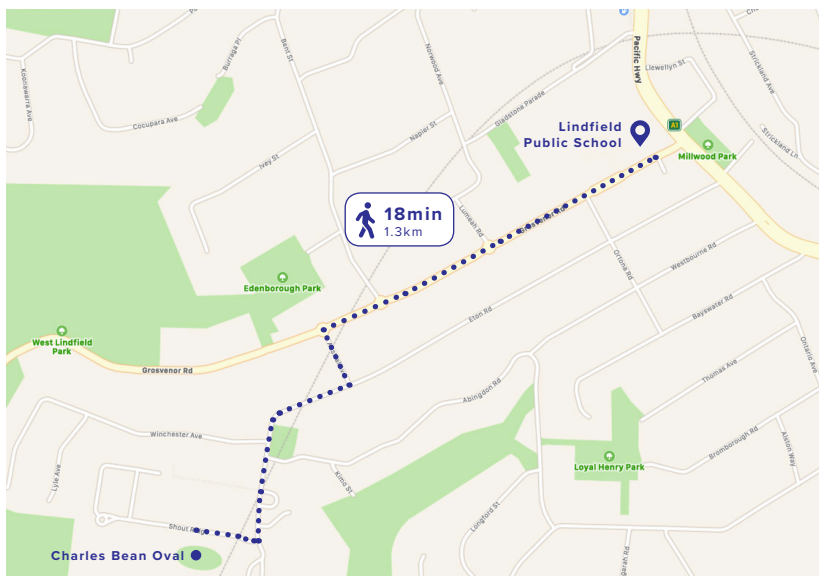


## WALKING EVACUATION

- Evacuate if it is safe to do so.
- Walking evacuation is to Lindfield Public School at 218 Pacific Hwy, Lindfield
- Use route as indicated below
- Teachers to walk with class
- Seek guidance from emergency services
- Escort provided by emergency services if required



## EVACUATION ROUTE



### Charles Bean Oval

End of, Eton Rd, Lindfield NSW 2070

↑ Walk east on Shout Ridge towards Eton Rd  
99 m

↶ Turn left onto Eton Rd  
400m

↶ Turn left onto Austral Ave  
110m

⦿ At the roundabout, take the 1st exit onto Grosvenor Rd  
Go through 2 roundabouts  
Destination will be on the left

📍 Lindfield Public School  
218 Pacific Hwy, Lindfield NSW 2070

# EVACUATION CONTINUED



## DO NOT EVACUATE IF:

- Spot fires are observed
- Embers are observed
- It is unsafe
- Directed by emergency services to remain in place
- Shelter in Place should be considered as an alternative when the risk associated with evacuation is greater than that of sheltering in place, or evacuation cannot be initiated and completed in a safe manner.
- **Contact 000 and request immediate assistance**

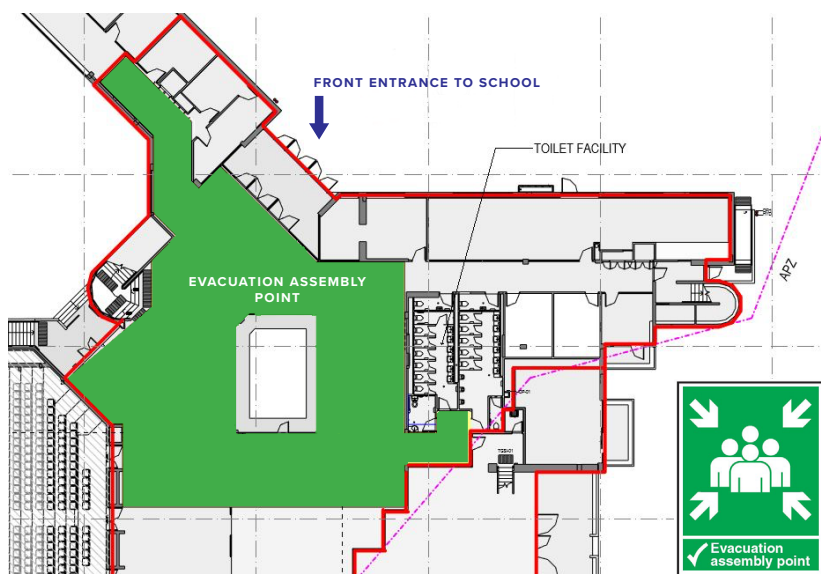


## ASSEMBLY POINT / SHELTER LOCATION

- Evacuation Assembly Point is inside entry to main building – outside the Auditorium. This area has been separated from the rest of the school by 2 hour fire walls
- Assembly Point may provide temporary shelter from the immediate effects of a bushfire



## ACTIONS



- Close all fire & smoke doors
- Close bushfire shutters
- Assemble first aid kits including Ventolin
- Keep watch for spot fires in and around the building
- When safe, evacuate or as instructed by emergency services



# TRIGGERS FOR EVACUATION

The following is provided as a guide for evacuation. Evacuate only if safe to do so. The Emergency Assembly Area provides shelter in place options.

Observation / Situation	Bushfire Danger Rating						
	Low/ Moderate	High	Very High	TOTAL Fire Ban Declared	Severe	Extreme	Catastrophic
Out of control fire north of Lane Cove Road of school	<ul style="list-style-type: none"> <li>Evacuation triggered if safe to do so.</li> <li>Or</li> <li>Move to assembly areas</li> </ul>	<ul style="list-style-type: none"> <li>Move to Emergency Assembly Area</li> <li>Evacuate if safe to do so</li> <li>Seek instruction from emergency services</li> </ul>	<ul style="list-style-type: none"> <li>Move to Emergency Assembly Area</li> <li>Evacuate if safe to do so</li> <li>Seek instruction from emergency services</li> </ul>	TOTAL Fire Ban Declared	<ul style="list-style-type: none"> <li><b>Close school</b></li> <li>Move to Emergency Assembly Area</li> <li>Seek instruction from emergency services</li> </ul>	<ul style="list-style-type: none"> <li>Close school</li> <li>Move to assembly Area</li> <li>Seek instruction from emergency services</li> <li>To <u>be escorted</u> from site by emergency services</li> </ul>	<ul style="list-style-type: none"> <li>Close school</li> <li>Move to assembly areas</li> <li>Seek instruction from emergency services</li> <li>To <u>be escorted</u> from site by emergency services</li> </ul>
Out of control fire south of Lane Cove Road from school	<ul style="list-style-type: none"> <li>Normal operation</li> <li>Seek guidance from emergency services</li> </ul>	<ul style="list-style-type: none"> <li>Move to Emergency Assembly Area</li> <li>Initiate evacuation of the site</li> </ul>	<ul style="list-style-type: none"> <li>Move to Emergency Assembly Area</li> <li>Trigger evacuation</li> <li>Seek instruction from emergency services</li> </ul>		<ul style="list-style-type: none"> <li><b>Close school</b></li> <li>Move to assembly areas</li> <li>Seek instruction from emergency services</li> </ul>	<ul style="list-style-type: none"> <li><b>Close school</b></li> <li>Move to assembly areas</li> <li>Seek instruction from emergency services</li> </ul>	<ul style="list-style-type: none"> <li><b>Close school</b></li> <li>Move to assembly areas</li> <li>Seek instruction from emergency services</li> <li>To <u>be escorted</u> from site by emergency services</li> </ul>
Bushfires within region but not within Area of Concern	<ul style="list-style-type: none"> <li>Normal operation</li> </ul>	<ul style="list-style-type: none"> <li>Situational awareness</li> </ul>	<ul style="list-style-type: none"> <li>Situational awareness</li> </ul>		<ul style="list-style-type: none"> <li>Normal operation</li> </ul>	<ul style="list-style-type: none"> <li>Situational awareness</li> </ul>	<ul style="list-style-type: none"> <li>Situational awareness</li> </ul>
No Fires	<ul style="list-style-type: none"> <li>Normal operation</li> </ul>	<ul style="list-style-type: none"> <li>Situational awareness</li> </ul>	<ul style="list-style-type: none"> <li>Situational awareness</li> </ul>		<ul style="list-style-type: none"> <li>Principal to consider precautionary closure of school</li> <li>Situational awareness</li> </ul>	<ul style="list-style-type: none"> <li>Principal to consider precautionary closure of school</li> <li>Situational awareness</li> </ul>	<ul style="list-style-type: none"> <li>Close school</li> </ul>

