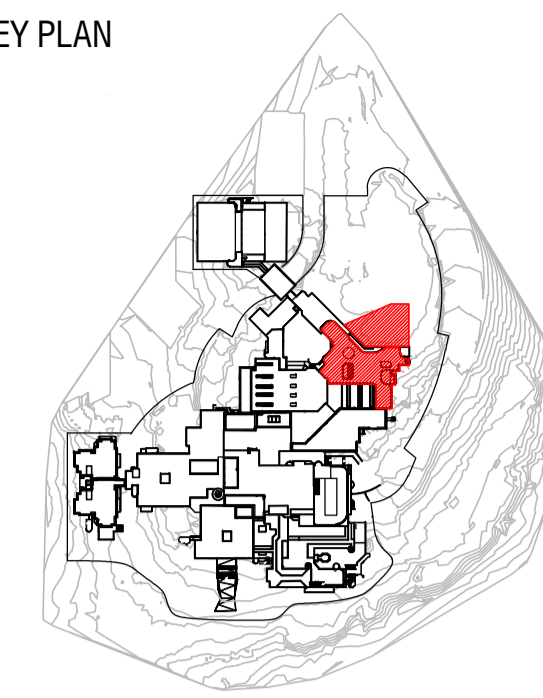
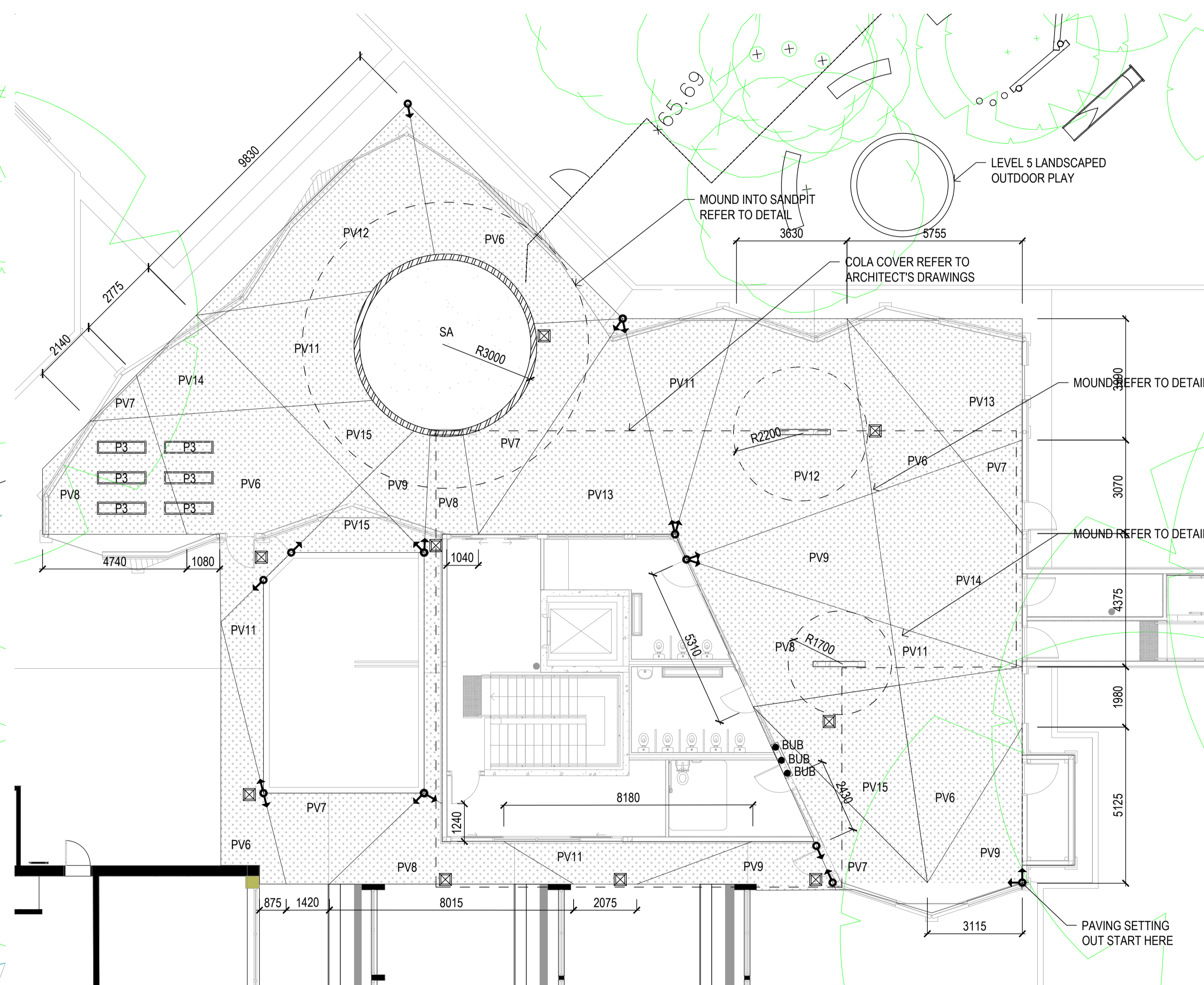
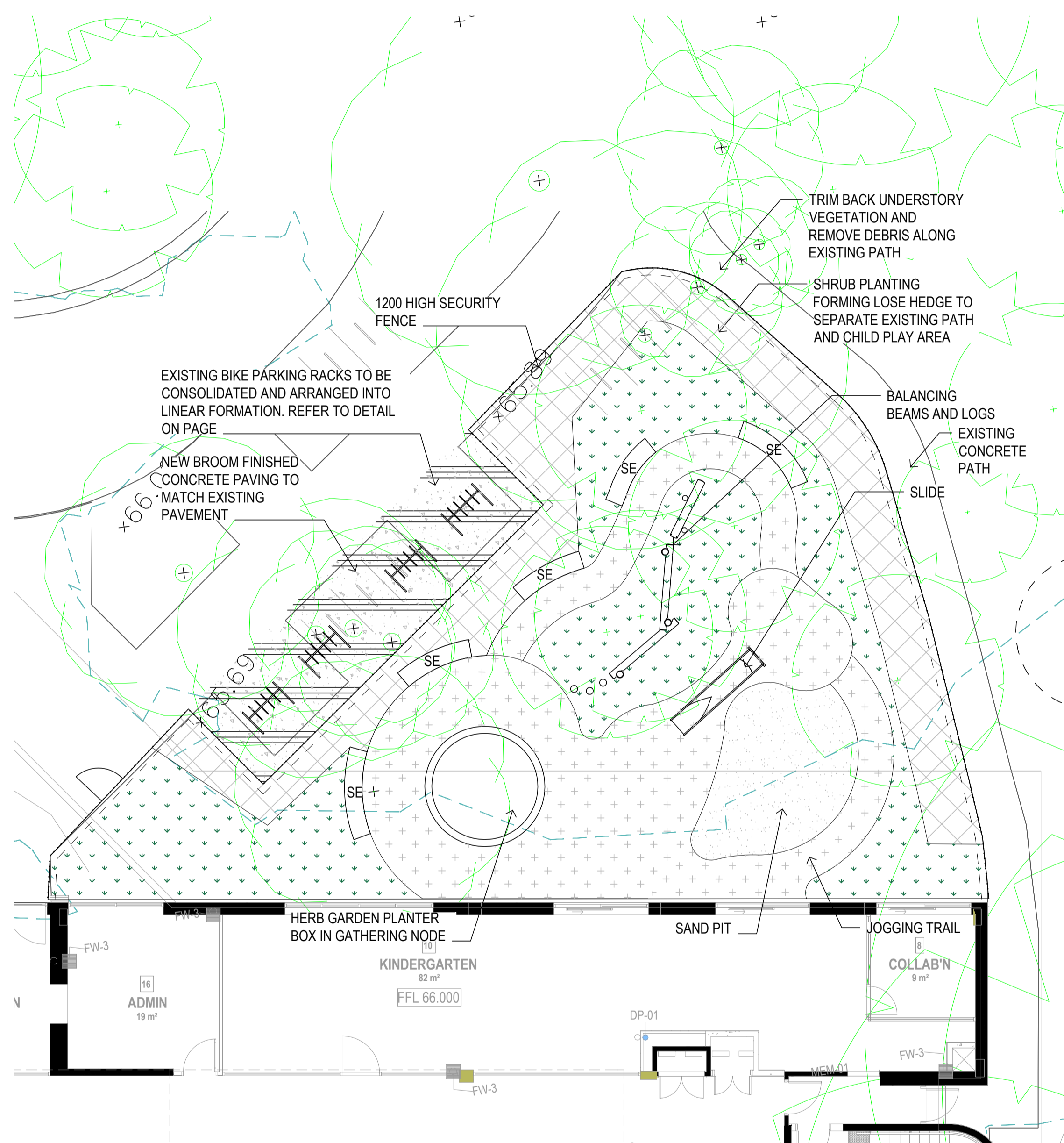


KEY PLAN



Copyright Designinc Sydney Pty Limited
 This drawing is protected by copyright. All rights are reserved. Unless permitted under the Copyright Act 1968, no part of this drawing may in any form or by any means be reproduced, published, broadcast or transmitted without the prior written permission of the copyright owner.
Please note
 If the Status of this drawing is not signed off For Construction it may be subject to change, alteration or amendments at the discretion of Designinc Sydney Pty Limited. If so, Designinc Sydney Pty Limited is not liable for any loss, damage, harm or injury whether special, consequential, direct or indirect, suffered by you or any other person as a result of your use of this drawing for construction purposes.
 Figured dimensions take preference to scale readings. Verify all dimensions on site. Report any discrepancies to the Architect for decision before proceeding with the work.
Nominated Architects
 Anthony Swan SAC1 | Sardary Amin 7337 | Ian Armbrong 7260 | Richard Does 8126

No	DATE	REVISIONS	BY



LEGEND

	BIKE PARK ZONE - REMOVE EXISTING PAVING		SOFTFALL		EXISTING TREE TO BE RETAINED
	TURF		SAND		BIKE RACK (RECLAIMED FROM SITE)
	SHRUB SCREEN PLANTING		SEAT		BROOM FINISHED CONCRETE
	1200 HIGH SECURITY FENCE				

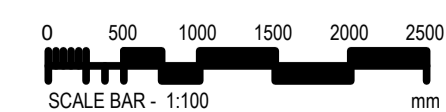
LEGEND

	PLAYING SAND (REFER TO FINISHES SCHEDULE)		RUBBER SOFTFALL TYPE 6		PLANTING BOX TYPE 3
	RUBBER SOFTFALL TYPE 1		RUBBER SOFTFALL TYPE 7		WATER BUBBLER IN TROUGH
	RUBBER SOFTFALL TYPE 2		RUBBER SOFTFALL TYPE 8		DRAINAGE GRATE REFER TO ENGINEER'S DETAIL
	RUBBER SOFTFALL TYPE 3		RUBBER SOFTFALL TYPE 9		

01 PLAN - LEVEL 5 LANDSCAPED OUTDOOR PLAY
 SCALE 1:100

02 PLAN - LEVEL 7 LANDSCAPE ROOFTOP PLAY
 SCALE 1:100

DRAWING TO BE PRINTED IN COLOUR



CONSULTANTS

TRAFFIC ENGINEER	ARUP
SERVICES ENGINEER	ERBAS AND ASSOCIATES
FIRE ENGINEER	AFFINITY FIRE ENGINEERING
CIVIL AND STRUCTURAL ENGINEER	BIRZULIS ASSOCIATES
BCA CONSULTANT	BCA LOGIC
QUANTITY SURVEYOR	WILDE AND WOOLLARD
PROJECT MANAGER	SAVILLS

ARCHITECT
Designinc | Lacoste+ Stevenson | bmc2
 architects in association
 Designinc Sydney PTY LIMITED ACN 003008820
 L12 / 77 PACIFIC HWY NORTH SYDNEY NSW 2060 AUSTRALIA
 PO BOX 651 NORTH SYDNEY NSW 2059 AUSTRALIA
 T +612 9895 7100 F +612 9895 7199
 E sydney@designinc.com.au www.designinc.com.au
 Architecture Urban Design Interiors



PROJECT LINDFIELD LEARNING VILLAGE
 Eton Road,
 Lindfield NSW 2070

TITLE L5 & L7 LANDSCAPE PLAN

DRAWN BY	IC	REVISION	
SCALES	AS SHOWN @ A1		
PLOT DATE	07/05/2018		
PROJECT N°.	S151441	REVISION	B
DRAWING N°.	LA-2011		
DRAWING STATUS	REVIEWED BY	SIGNATURE	DATE

QUALITY CERTIFIED ISO 9001
 Completion of the Drawing Status is evidence the design has been verified as conforming to the requirements of the Project M.S. Plan. Installing the 'Drawn By' box confirms that this drawing has been prepared in conformity with Designinc Sydney M.S. procedures.

NOT FOR CONSTRUCTION