

Legend

Site Boundary

Buffer 150m

Scale: 0 25 50 100 Meters	Data Sources: Historical Aerials: © Land and Property Information (a division of the Department of Finance and Services)	Coordinate System: GDA 1994 MGA Zone 56	Date: 01March, 2017
---------------------------------	--	--	---------------------

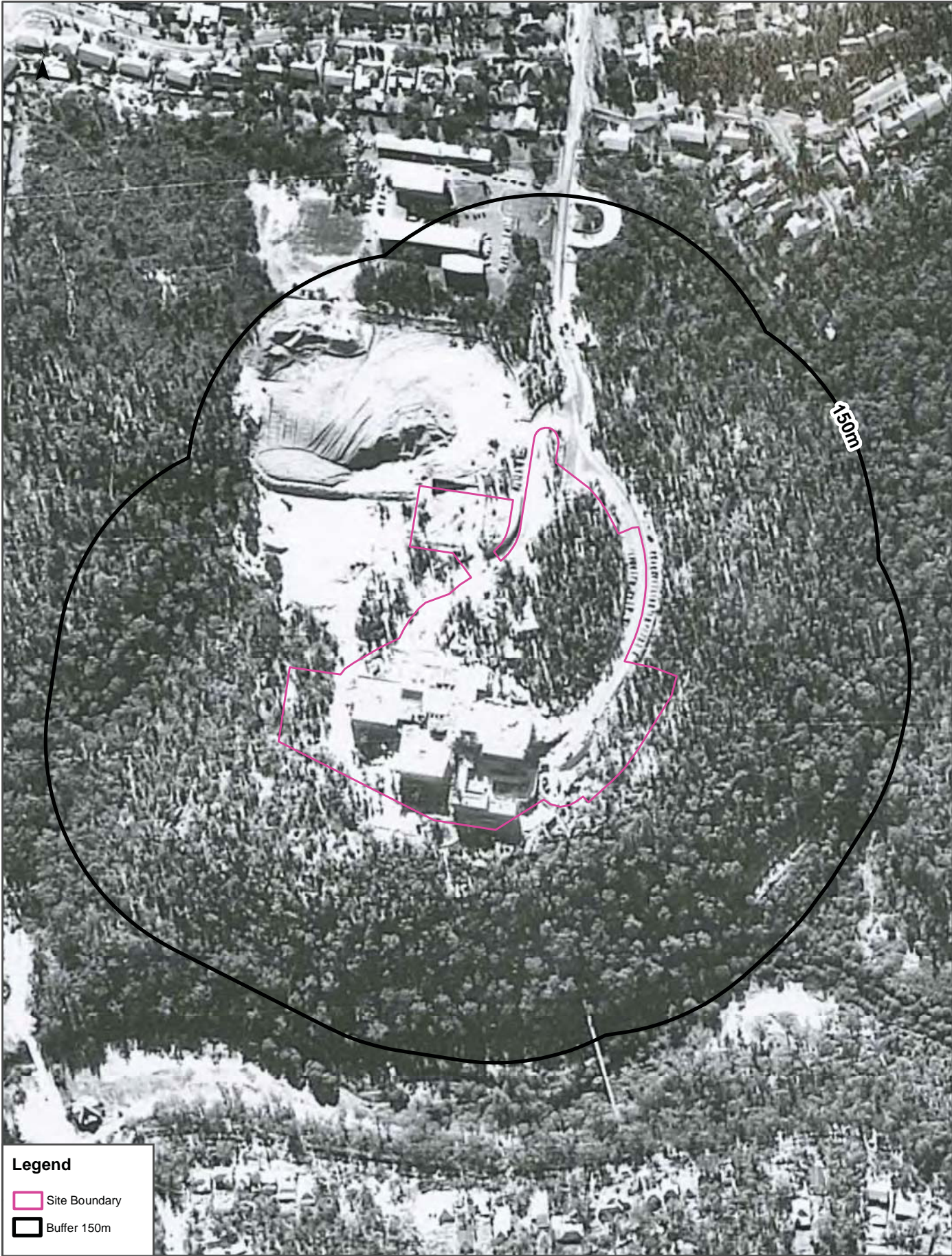


Legend

Site Boundary


Buffer 150m


Scale: 0 25 50 100 Meters	Data Sources: Historical Aerials: © Land and Property Information (a division of the Department of Finance and Services)	Coordinate System: GDA 1994 MGA Zone 56	Date: 01March, 2017
---------------------------------	--	--	---------------------



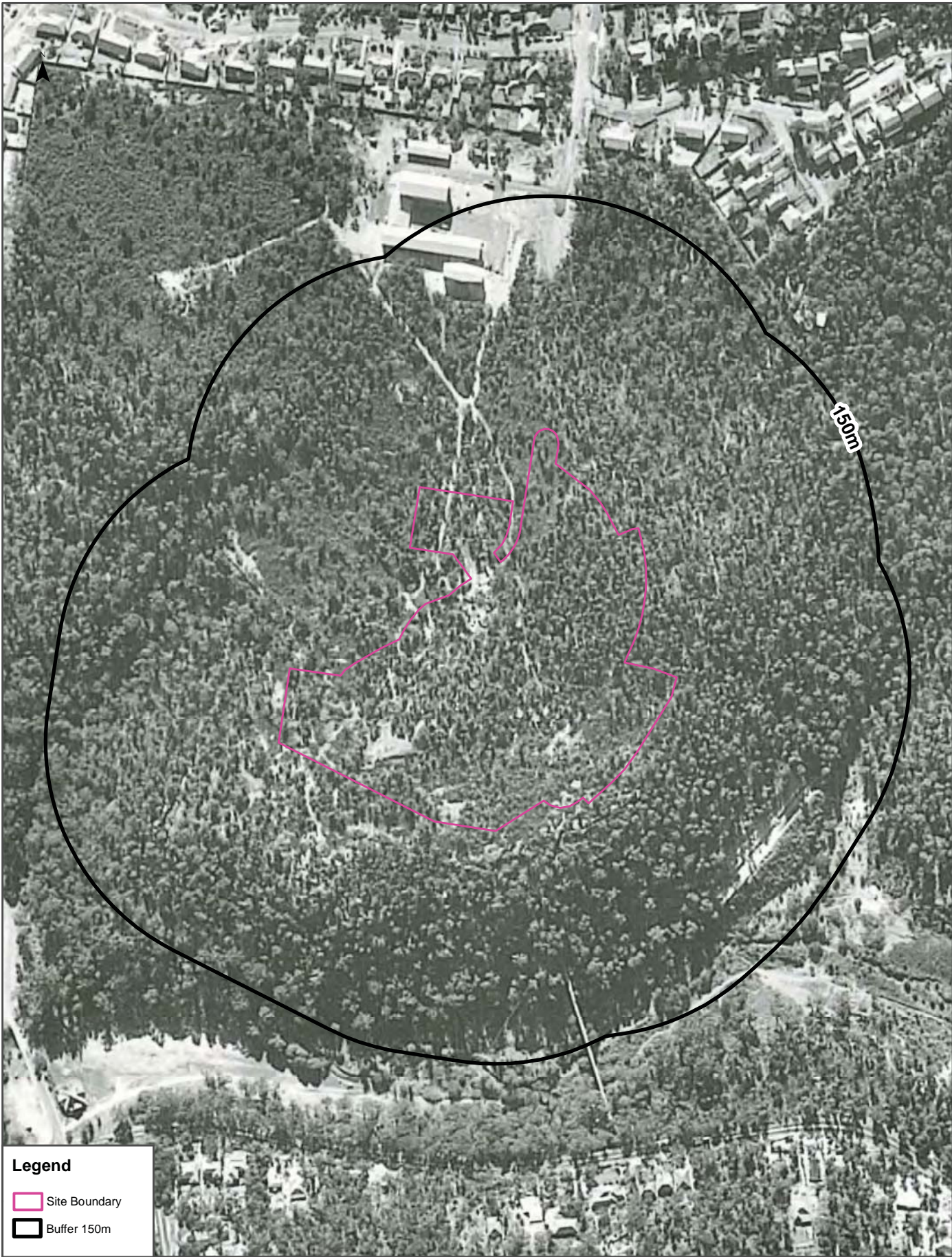


Legend

 Site Boundary

 Buffer 150m

<p>Scale:</p> <p>0 25 50 100</p> <p>Meters</p>	<p>Data Sources: Historical Aerials: © Land and Property Information (a division of the Department of Finance and Services)</p>	<p>Coordinate System: GDA 1994 MGA Zone 56</p>	<p>Date: 01March, 2017</p>
--	---	--	----------------------------



Legend

Site Boundary

Buffer 150m

Scale: 0 25 50 100 Meters	Data Sources: Historical Aerials: © Land and Property Information (a division of the Department of Finance and Services)	Coordinate System: GDA 1994 MGA Zone 56	Date: 01March, 2017
---------------------------------	--	--	---------------------



Legend

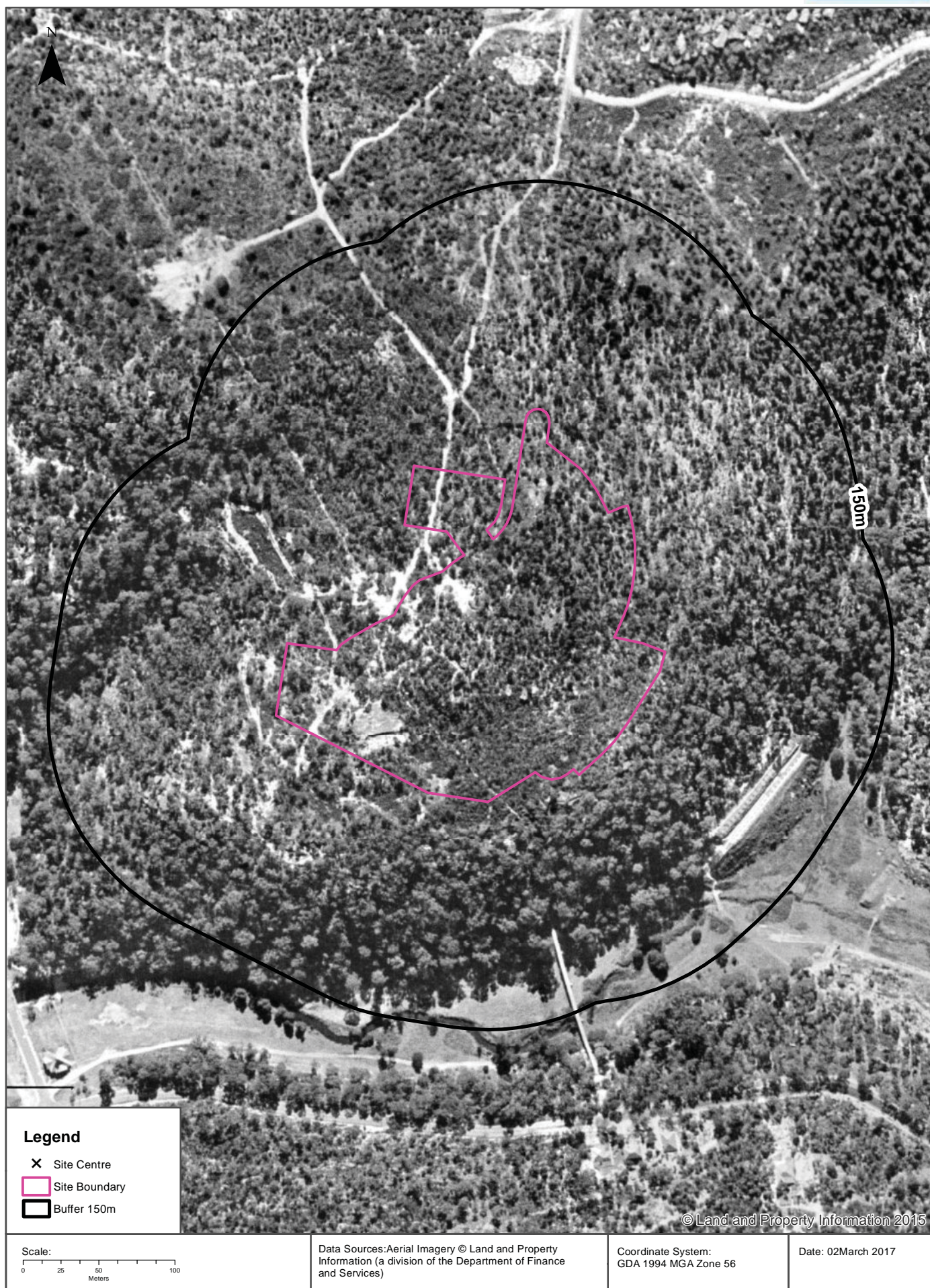
Site Boundary

Buffer 150m

<p>Scale:</p> <p>0 25 50 100</p> <p>Meters</p>	<p>Data Sources: Historical Aerials: © Land and Property Information (a division of the Department of Finance and Services)</p>	<p>Coordinate System: GDA 1994 MGA Zone 56</p>	<p>Date: 01March, 2017</p>
--	---	--	----------------------------

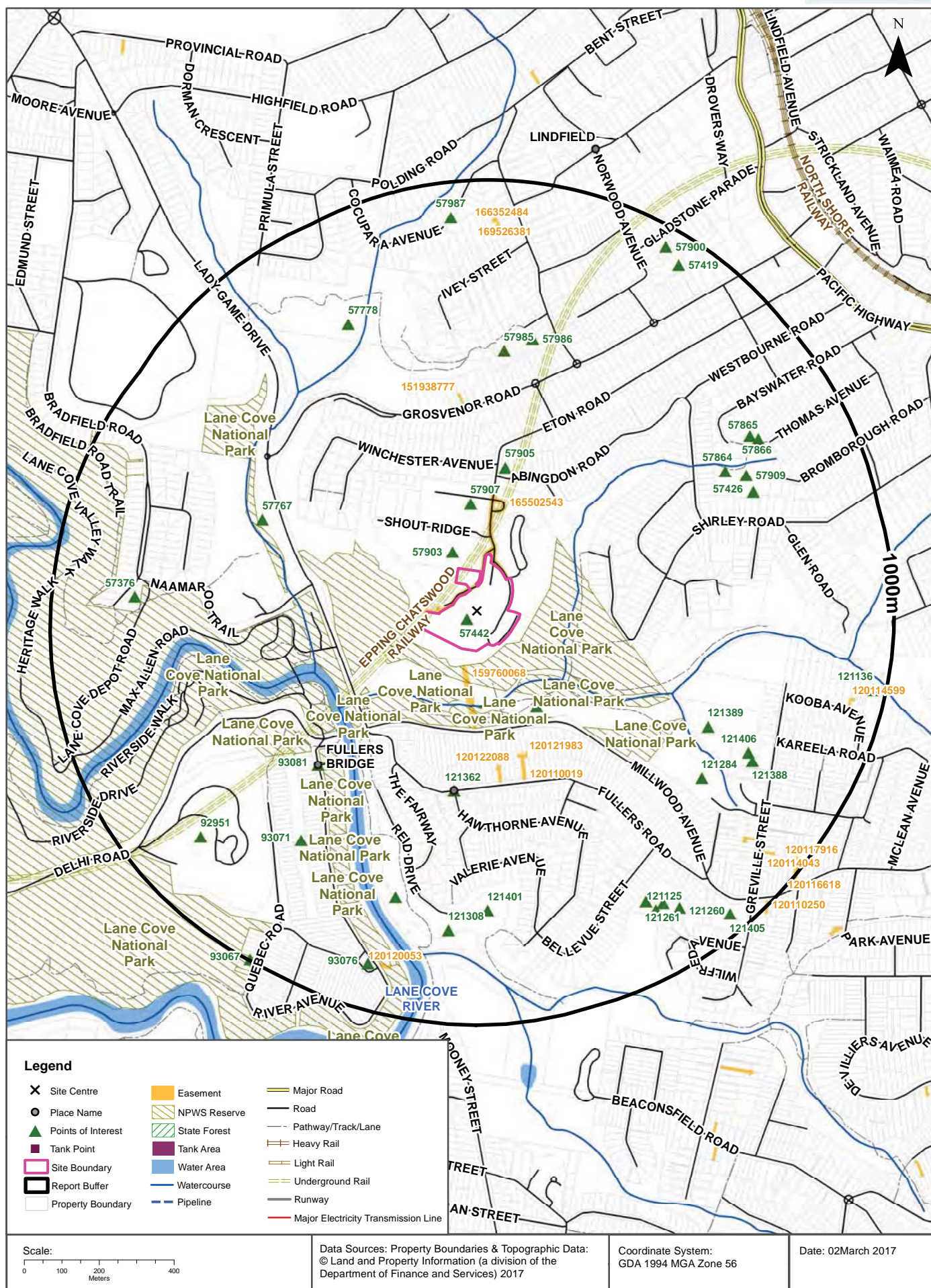
Aerial Imagery 1943

Eton Road, Lindfield, NSW 2070



Topographic Features

Eton Road, Lindfield, NSW 2070



Topographic Features

Eton Road, Lindfield, NSW 2070

Points of Interest

What Points of Interest exist within the report buffer?

Map Id	Feature Type	Label	Distance	Direction
57442	University	UNIVERSITY OF TECHNOLOGY KURING-GAI CAMPUS	0m	Onsite
57903	Sports Field	CHARLES BEAN SPORTS FIELD	46m	North
57907	Transmission Station	FILM AUSTRALIA	143m	North
121354	Park	FULLERS PARK	193m	South East
57905	Park	ABINGDON ROAD RESERVE	236m	North
121362	Suburb	CHATSWOOD WEST	378m	South
93081	Locality	FULLERS BRIDGE	459m	South West
57767	Park	HYNDES PARK	504m	North West
57985	Sports Field	EDENBOROUGH PARK	545m	North
121389	Park	BLUEGUM RESERVE	581m	South East
57986	Park	PLAYGROUND	587m	North
57864	Sports Court	CRICKET NETS	639m	North East
121284	Research Station	NATIONAL ACOUSTIC LABORATORIES	642m	South East
93071	Park	KOBADA PARK	651m	South West
57909	Park	LOYAL HENRY PARK	685m	North East
121309	Golf Course	CHATSWOOD GOLF COURSE	686m	South
57426	Community Facility	2ND ROSEVILLE SCOUT HALL	687m	North East
121401	Sports Field	OH REID OVAL	693m	South
121406	Sports Field	GREVILLE STREET RESERVE	709m	South East
57778	Park	Park	716m	North West
121388	Sports Court	BASKETBALL HALF COURT	730m	South East
57866	Sports Court	TENNIS COURTS	742m	North East
121308	Picnic Area	O H REID MEMORIAL PARK	750m	South
57865	Park	PLAYGROUND	757m	North East
57376	Park	AIRMANS PARK	778m	West
121359	Sports Court	TENNIS COURTS	790m	South East
92951	Crematorium	NORTHERN SUBURBS MEMORIAL GARDENS CREMATORIUM	814m	South West
121261	Sports Court	TENNIS COURTS	818m	South East
121125	Community Facility	CHATSWOOD TENNIS CLUB	823m	South East
121260	Sports Court	TENNIS COURTS	853m	South East
93076	Park	MULHALL PARK	877m	South
57987	Park	BURRAGA PLACE PARK	905m	North
57419	Community Facility	LINDFIELD KINDAMINDI GUIDE HALL	923m	North East

Map Id	Feature Type	Label	Distance	Direction
57900	Park	TWO TURNERS RESERVE	947m	North East
121405	Picnic Area	LOWANNA PARK	948m	South East
121136	Community Facility	CHATSWOOD HALL BLUE GUM PARK	964m	East
93067	Park	QUEBEC RESERVE	996m	South West

Topographic Data Source: © Land and Property Information (2015)

Creative Commons 3.0 © Commonwealth of Australia <http://creativecommons.org/licenses/by/3.0/au/deed.en>

Topographic Features

Eton Road, Lindfield, NSW 2070

Tanks (Areas)

What are the Tank Areas located within the report buffer?

Note. The large majority of tank features provided by LPI are derived from aerial imagery & are therefore primarily above ground tanks.

Map Id	Tank Type	Status	Name	Feature Currency	Distance	Direction
	No records in buffer					

Tanks (Points)

What are the Tank Points located within the report buffer?

Note. The large majority of tank features provided by LPI are derived from aerial imagery & are therefore primarily above ground tanks.

Map Id	Tank Type	Status	Name	Feature Currency	Distance	Direction
	No records in buffer					

Tanks Data Source: © Land and Property Information (2015)

Creative Commons 3.0 © Commonwealth of Australia <http://creativecommons.org/licenses/by/3.0/au/deed.en>

Major Easements

What Major Easements exist within the report buffer?

Note. Easements provided by LPI are not at the detail of local governments. They are limited to major easements such as Right of Carriageway, Electrical Lines (66kVa etc.), Easement to drain water & Significant subterranean pipelines (gas, water etc.).

Map Id	Easement Class	Easement Type	Easement Width	Distance	Direction
165502543	Primary	Right of way	Variable	0m	Onsite
159760068	Primary	Electricity	9m and Var.	43m	South
120121983	Primary	Undefined		296m	South
120122088	Primary	Undefined		311m	South
120110019	Primary	Undefined		334m	South
151938777	Primary	Right of way		399m	North
120109986	Primary	Undefined		828m	South East
120120053	Primary	Undefined		864m	South
166352484	Primary	Right of way	Variable	872m	North
169526381	Primary	Right of way	Variable	887m	North
120114043	Primary	Undefined		892m	South East
120114599	Primary	Undefined		908m	East
120117916	Primary	Undefined		968m	South East
120116618	Primary	Undefined		973m	South East
120110250	Primary	Undefined		989m	South East

Easements Data Source: © Land and Property Information (2015)

Creative Commons 3.0 © Commonwealth of Australia <http://creativecommons.org/licenses/by/3.0/au/deed.en>

Topographic Features

Eton Road, Lindfield, NSW 2070

State Forest

What State Forest exist within the report buffer?

State Forest Number	State Forest Name	Distance	Direction
N/A	No records in buffer		

State Forest Data Source: © Land and Property Information (2015)

Creative Commons 3.0 © Commonwealth of Australia <http://creativecommons.org/licenses/by/3.0/au/deed.en>

National Parks and Wildlife Service Reserves

What NPWS Reserves exist within the report buffer?

Reserve Number	Reserve Type	Reserve Name	Gazetted Date	Distance	Direction
N0083	NATIONAL PARK	Lane Cove National Park	24/04/1992	11m	North West

NPWS Data Source: © Land and Property Information (2015)

Creative Commons 3.0 © Commonwealth of Australia <http://creativecommons.org/licenses/by/3.0/au/deed.en>