

Emma Viljoen  
Senior Project Manager  
Project Management  
Savills Australia



29 August 2018

**Re: Review of Landscape Management Plan (Kleinfelder 2018) – Lindfield Learning Village (SSD 8114).**

Dear Emma,

This letter has been prepared at the request of Alaine Roff (Urbis, Associate Director), to confirm that the Biodiversity Assessment Report (BAR) (Ecoplanning 2018) has considered the Landscape Management Plan (LMP) (Kleinfelder 2018), for the Lindfield Learning Village proposal (SSD 8114).

Impacts assessed by the BAR are shown in Figure 1.3 and discussed in Section 6 of Ecoplanning (2018). The impacts associated with the Asset Protection Zone in Figure 1 of the LMP are consistent with those calculated in the BAR. These impacts have been assessed in accordance with the NSW Framework for Biodiversity Assessment, under the NSW Biodiversity Offset Policy for Major Projects (NSW OEH 2014). The Biodiversity Offset Strategy in the BAR has identified the appropriate quantum of biodiversity credits to account for these impacts, and payment in the Biodiversity Conservation Fund will be made to allay this offset obligation prior to the commencement of construction.

If you would like to discuss any of the above responses and recommendations further, please contact me on the below details.

Sincerely,

Lucas McKinnon

Director and Principal Ecologist  
Accredited Biobanking Assessor (Acc# 76)  
BEnvSc (Hons), GCert. Ornith. | M: 0421 603 549 | E: [lucas.mckinnon@ecoplanning.com.au](mailto:lucas.mckinnon@ecoplanning.com.au)

## References

Ecoplanning (2018). Biodiversity Assessment Report – Framework for Biodiversity Assessment – Lots 2 and 4 // DP 1151638, Eton Rd, Lindfield – UTS Ku-ring-gai campus (v 5.0). Prepared for DesignInc Sydney Pty Ltd, on behalf of NSW Dept. of Education.

Kleinfelder ((2018). Landscape Management Plan – Lindfield Learning Village, Eton Road, Lindfield NSW. Project No: 20191317. Prepared for: DESIGNINC PTY LTD

NSW Office of Environment and Heritage (NSW OEH) (2014). *Framework for Biodiversity Assessment. NSW Biodiversity Offsets Policy for Major Projects*. NSW Office of Environment and Heritage, Sydney.

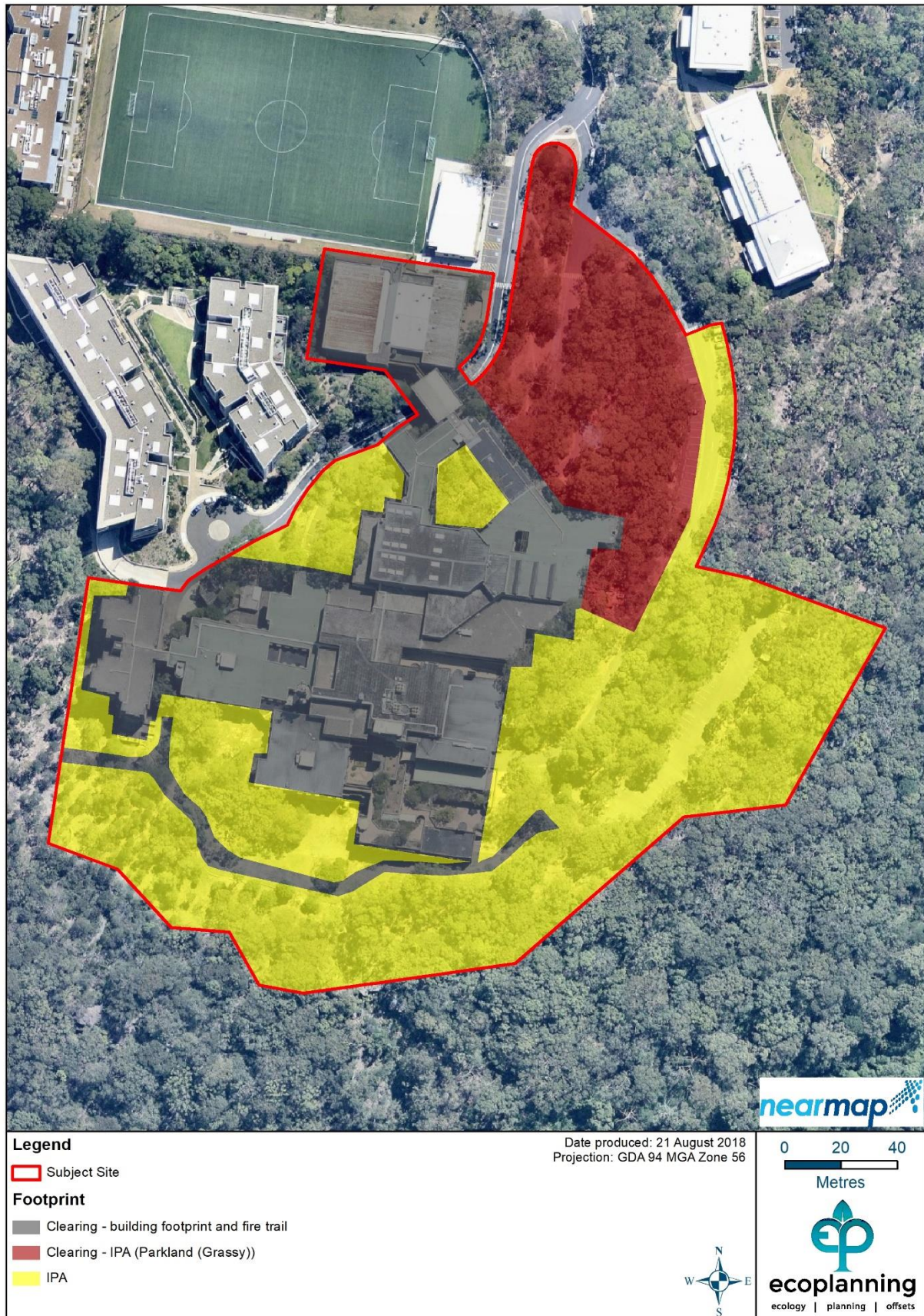


Figure 1: Proposed impact footprint associated with Asset Protection Zones (Source: Eco planning 2018).



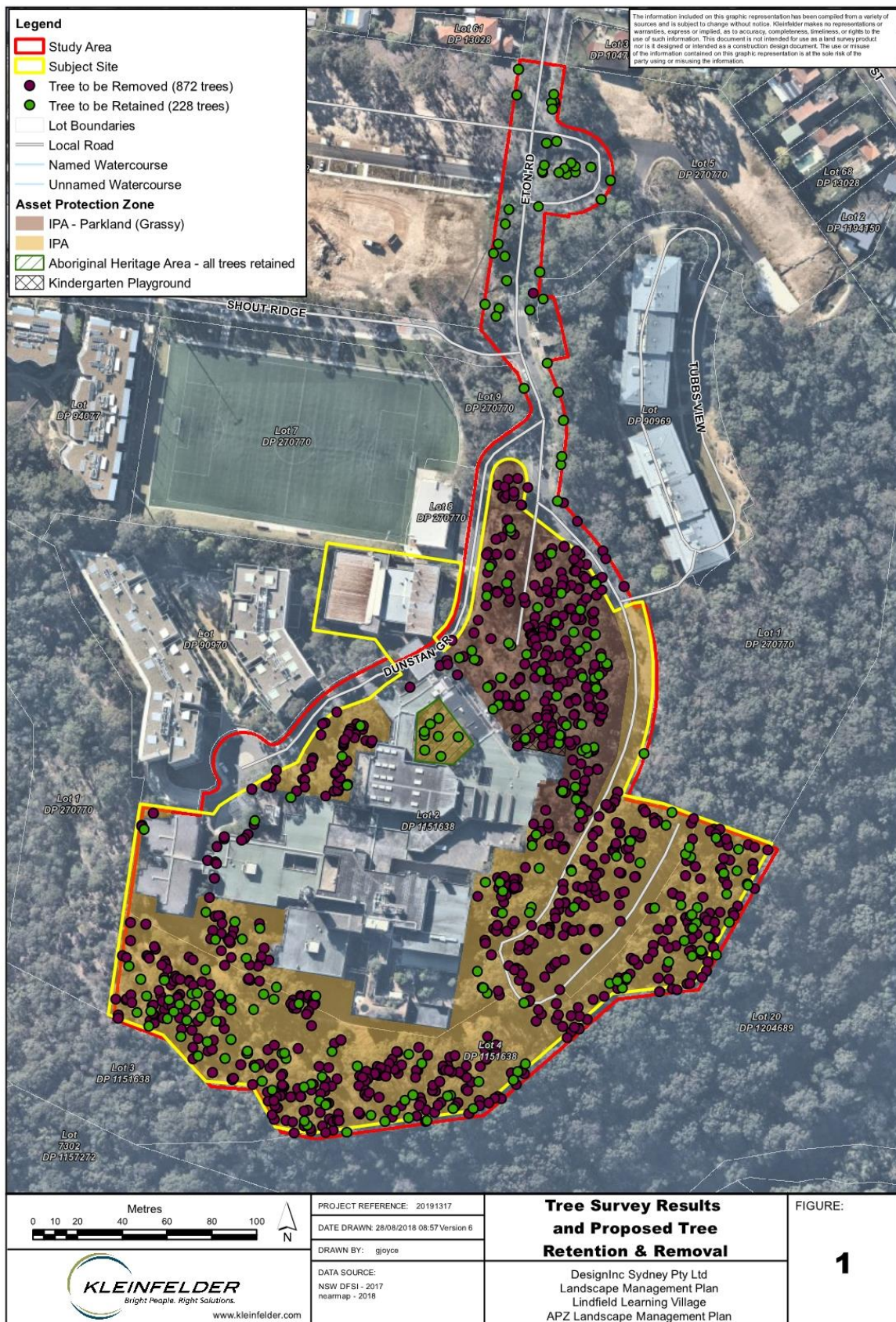


Figure 2: Proposed tree removal and retention for Asset Protection Zones, Lindfield Learning Village (Source Kleinfelder 2018).