

# Lindfield Learning Village

## building elements guide

First issued 7 April 2017

UPDATED - 26 May 2017

**DesignInc** | **Lacoste + Stevenson** | **bmc2**  
architects in association

Level 12, 77 Pacific Highway, North Sydney NSW Australia  
PO Box 651, North Sydney NSW 2059 Australia  
T +61 2 8905 7100 | F +61 8905 7199  
E [sydney@sydney.designinc.com.au](mailto:sydney@sydney.designinc.com.au)  
W [designinc.com.au](http://designinc.com.au)

# contents:

Rules for new architectural interventions

## outside

### ground & floors

- play areas & shade structures
- existing courtyards & terraces

### facades

- concrete
- windows & doors
- shade - fabric awnings
- exterior balustrades
- exterior stairs

### roofs

- accessible roofs
- inaccessible roofs
- new roof structures (childcare)

## inside

### floors

- carpet | concrete

### walls

- non-load bearing
- interior balustrades & handrails

### ceilings

- waffle slab (services strategy, light, acoustics)
- existing timber ceiling

### other

- wet areas
- fish pond / internal garden
- built-in furniture

# rules for new architectural interventions:

The adaptive re-use of the UTS Kuringai Campus will be following a set of design rules, in order to create a coherent architectural ensemble, while reading the original fabric easily and differentiating new interventions.

1. **Singularity:** use a singular architectural language for new interventions, in order to be easily identifiable.
2. **Use as few materials as possible:** mainly aluminum panels and stainless steel netting. These materials are versatile and can be used in many locations; for many purposes, indoor and outdoor.
  - a. Outdoor: childcare facade, new fire stairs, handrails and balustrades, shade structures, roof enclosures...
  - b. Indoor: cable trays, AC ducts, joinery, handrails and balustrades, furniture...

The materials used are '2D' sheets as opposed to brutalist architecture vocabulary which use mass and sculptural aesthetics through '3D' materials (concrete, bricks...)

3. Use **homogenous geometry** throughout: a playful architectural language with educational references to Origami. A geometry that is easily adaptable to different programs.
4. Use a **defined palette of colour:** Possibly one colour per homebase.
5. Introduced architectural and fit-out elements are **reversible** and recyclable.

While contrasting with the original fabric, this language is part of the same register. It is sympathetic to the existing building.

# outside

## grounds | play areas & shade structures

### Existing Location



### Description

Upgrades of play-areas including new shade structures, will be approached sensitively with minimal disturbance of the existing landscape. Changes to surfaces include new hardstand play-ground on the flattest ground to avoid unnecessary excavation.

Shade structures will have minimal footprint and be operable to adapt to sun and shade requirements.



### Proposal

# outside

## grounds | play areas & shade structures

### Proposal



### Existing

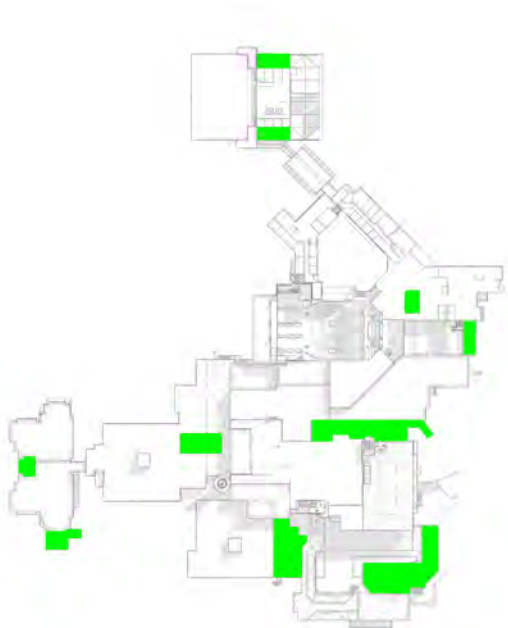




# outside

## grounds | existing courtyards & terraces

### Existing Location



### Description

Existing courtyard tiles to be replaced with a concrete topping slab to create a uniformity of surface with the concrete facades. Concrete will become a chalk drawing medium. Planter boxes to become fruit and vegetable planters with upgrades to attached playground seating.



precedent - perspective of Ultimo Pymont Public School

# outside

## grounds | existing courtyards & terraces

### Proposal



### Existing



# outside facades | concrete

## Existing Location



## Description

Concrete facades to be cleaned and retained as they are.



precedent - clean concrete architecture in bushland setting

## Existing



precedent - dirty & clean



# outside

## facades | windows & doors

### Existing Location



### Description

All windows and doors are to be replaced with full-height units. Windows and Doors are to be openable and include extensive use of sliding glazed doors to increase direct connections with external spaces, facilitating outdoor learning areas.

Some doors are to be replaced with solid swing doors in bright colours to contrast with the neutral concrete palette of the facade and proposed external flooring.

Window & door framing will be replaced with aluminium profiles as close as possible to the original sections and colour (black anodised).



precedent - Everglades Visitor's Centre - Leura

# outside

## facades | windows & doors

### Proposal



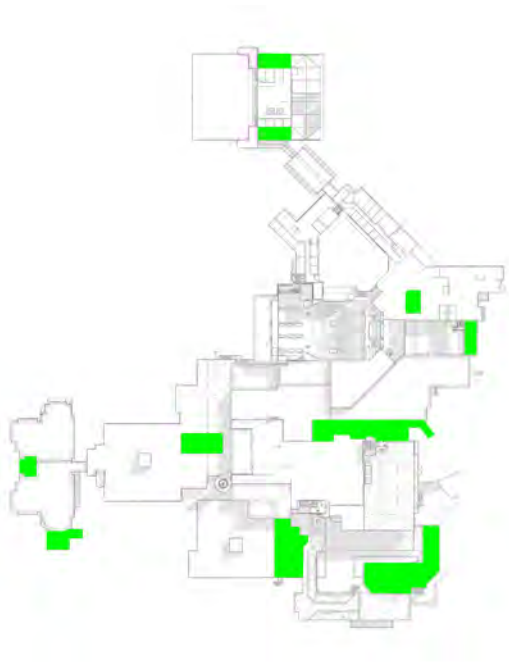
### Existing



# outside

## facades | shade - fabric awnings

### Location

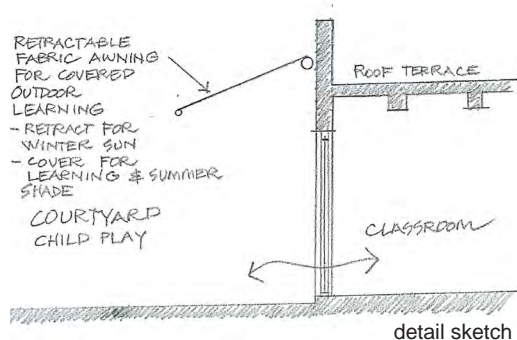


### Description

Retractable fabric awnings to extend shade to courtyards to facilitate outdoor learning areas.

- Awnings retract in winter to permit maximum winter sun access
- Awnings extend in summer to provide maximum summer shade
- Fabric awnings in bright colours contrast with neutral palette of concrete facade providing a sense of playfulness to these spaces
- Addition of awnings provides a human scale to these existing courtyard spaces while keeping the ground plane free of any structure

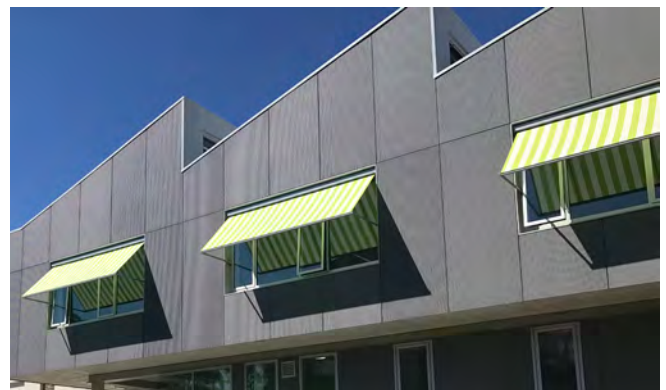
### Materials



detail sketch



fabric sun shading sample



precedent | french school at maroubra | block D addition



# outside

## facade | shade - fabric awnings

### Proposal



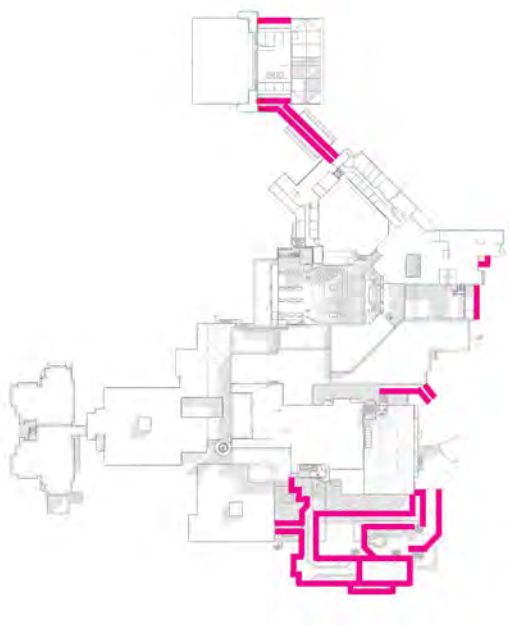
### Existing



# outside

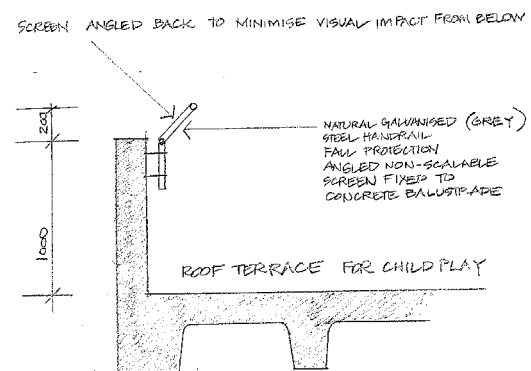
## facades | exterior balustrades

### Existing Location



### Description

Perforated steel mesh extensions are attached to the inside of the existing concrete balustrades to ensure BCA compliance and Department of Education requirements. These extensions are angled away from the facade to ensure minimal visibility from external views. The semi-transparent mesh is also visually recessive.



detail



material precedent - perforated metal



Proposal



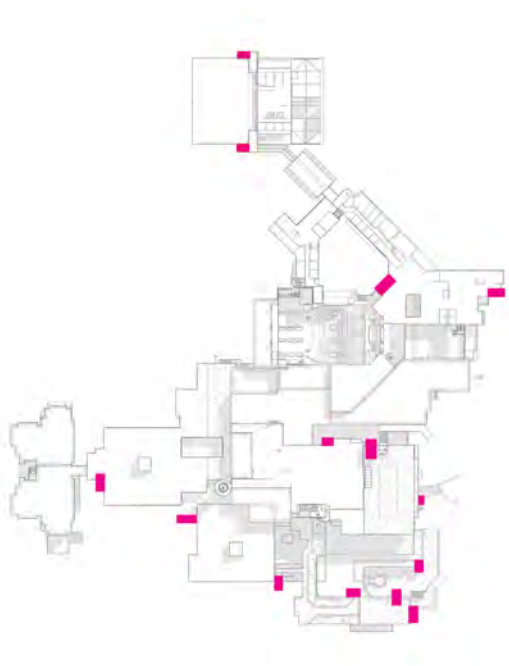
Existing



# outside

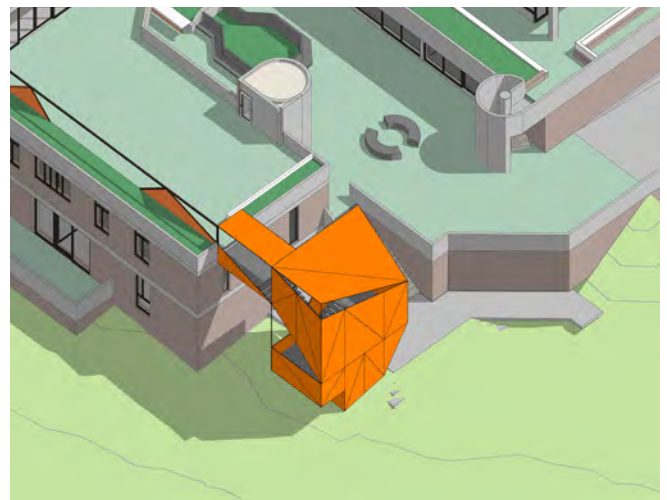
## facades | exterior stairs

### Existing Location



### Description

New external stairwells will be added to complement the non-compliant existing concrete stairs. They will be located in front of blank walls or, where possible, out of sight. Their geometry will be a similar language to the perimeter enclosure of elevated terraces. The stairs are proposed in a contrasting lightweight material such as painted metal distinguishing between the original and the new, while of the same spirit.



### Proposal



Existing



Precedent



# outside

## facades | exterior stairs

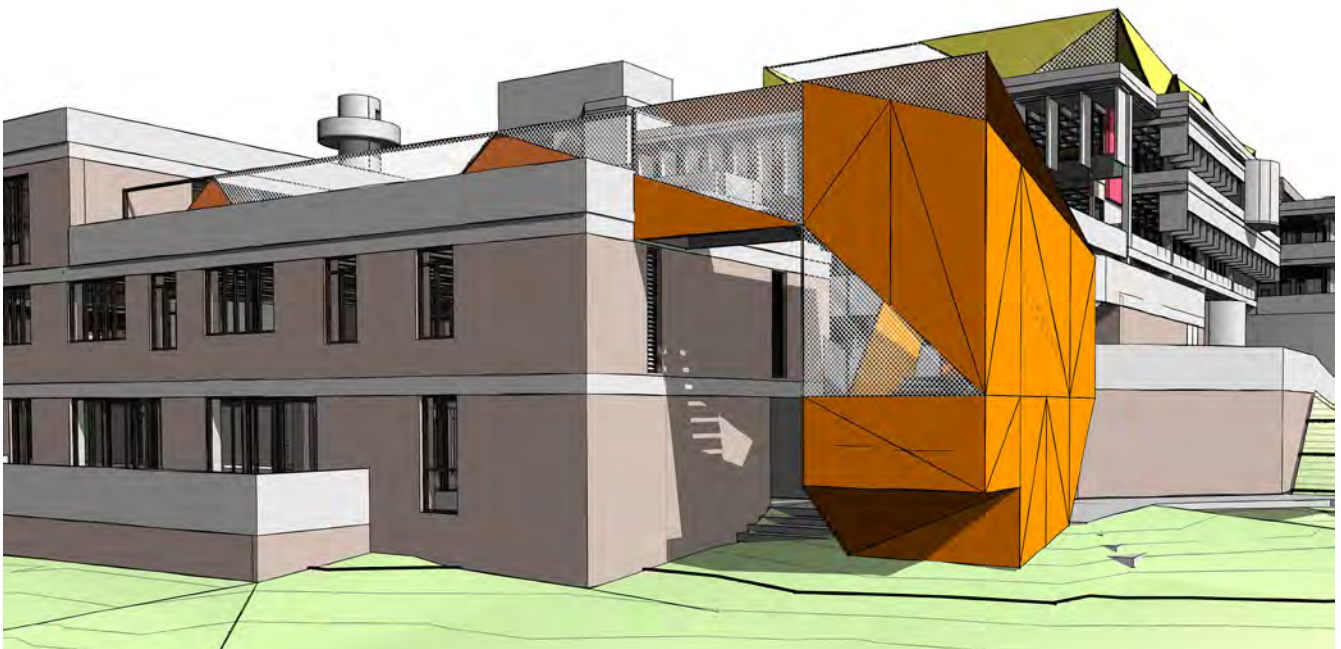
### Existing



### Description

The new fire stairs geometry is following the same as other elements, referring to Origami.

They are built with contrasting lightweight sheet material such as prefabricated powdercoated aluminium panels distinguishing between the original and new.

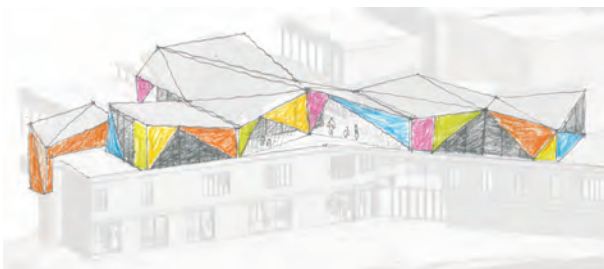


### Proposal

# outside

## roofs | new roof structures

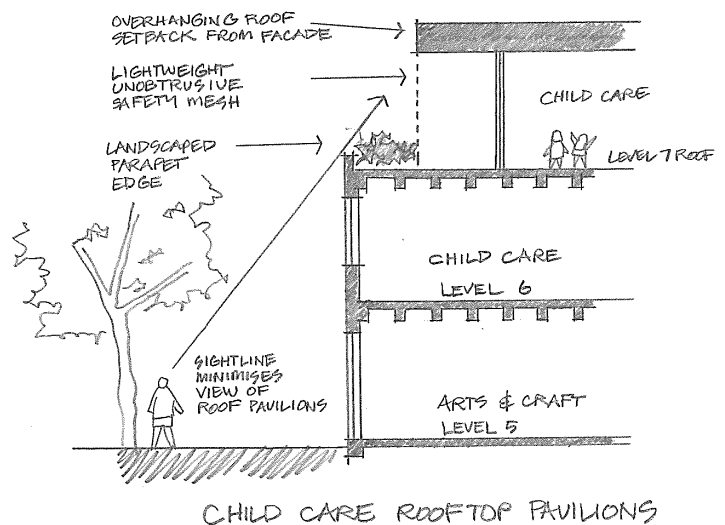
### Existing Location



### Description

Light-weight pavilions on roof for new childcare facility

- new structures to be setback from masonry facade, behind ground level sightlines
- new pavilions to appear light in construction - use of large glass windows connecting spaces to rooftop play areas.
- curvilinear overhanging roof is setback from the facade and connects pavilions behind a landscaped parapet.







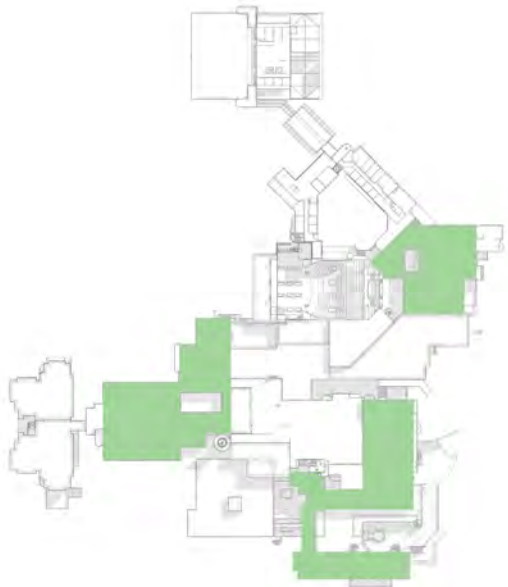
Views from the Main Entrance with context





# outside roofs | accessible

## Existing Location



## Description

Roof top spaces are converted into playgrounds and sports courts.

- fabric mesh screens supported by metal pipe framing permit ball sports to be played on roof spaces.

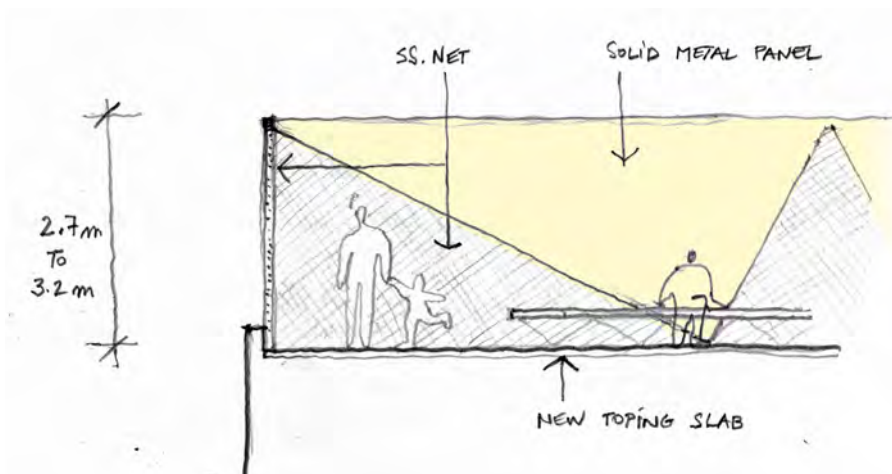
Galvanised steel reo-bars could form tall vertical-fencing, away from the edges in order not to be visible from the ground.

- light-weight and transparent 'fencing' does not add to the buiding massing.

- polycarbonate roofing provides shade and weather protection to outdoor learning spaces.



precedent - amanda leveté architects



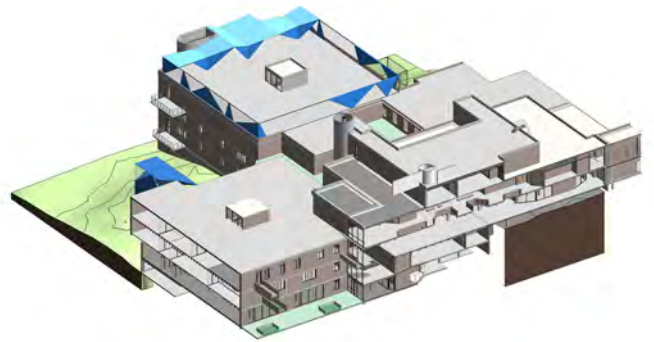
Section detail



precedent - amid & cero 9 architects

# outside roofs | accessible

## Existing Location



Main accessible roof.

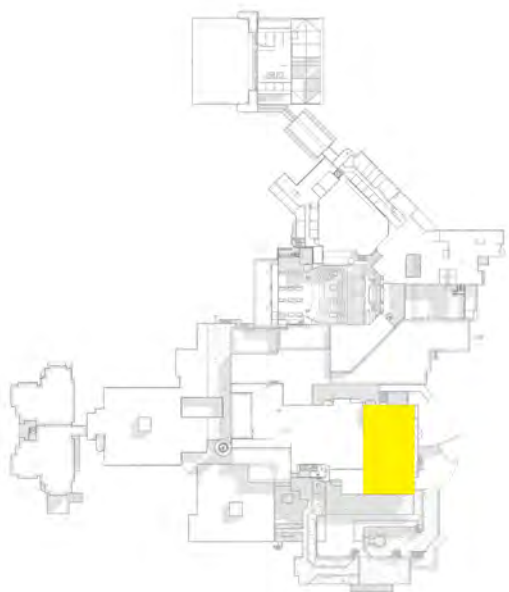


Main accessible roof view from the street.



# outside roofs | accessible

## Existing Location



## Description

Because the site is lacking of outdoor play area, some rooves will be accessible.

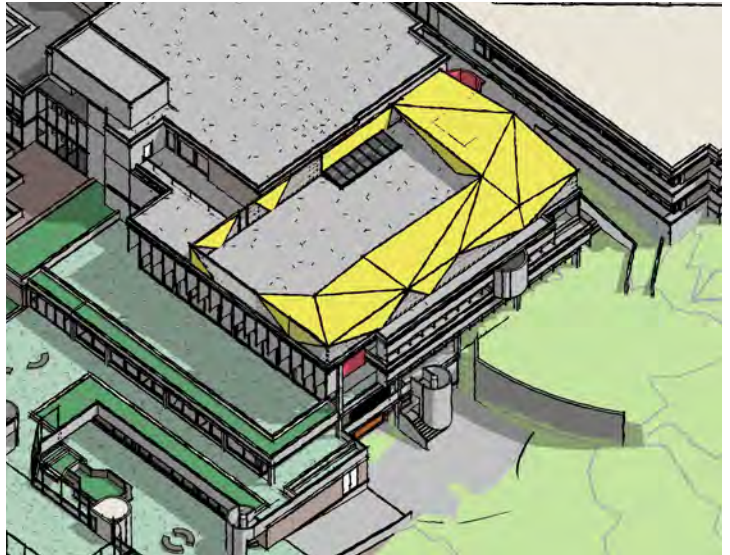
Existing low parapets, will be extended using the same materials (metal sheets and netting) and same geometry register, to create a safe enclosure.

Each roof, depending of its location will be following the adjacent Homebase colour.

Homebases 1 & 4 Roof play area and old carpark driveway







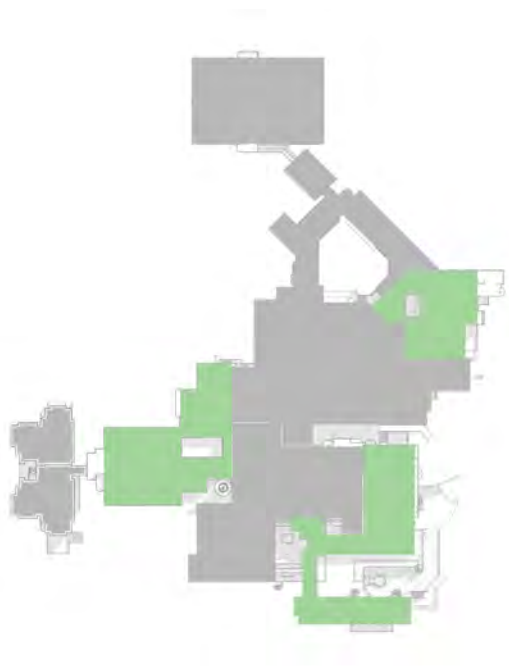
Homebases 1 & 4 Roof play area





# outside roofs | inaccessible roofs

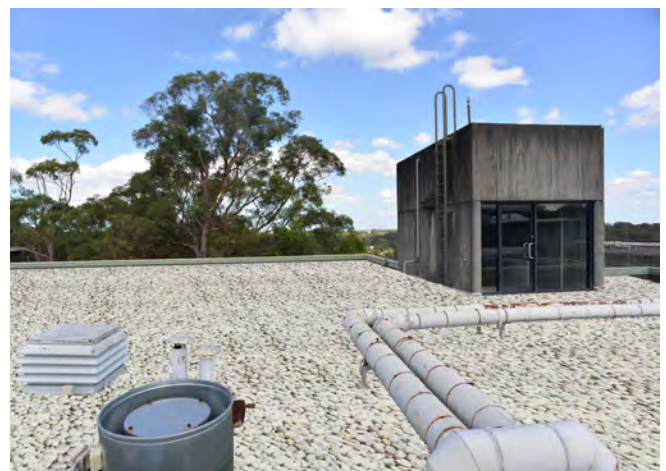
## Existing Location



## Description

Inaccessible roofs to be cleaned and repaired with new waterproofing membranes with protective pebble layer

## Proposal



details



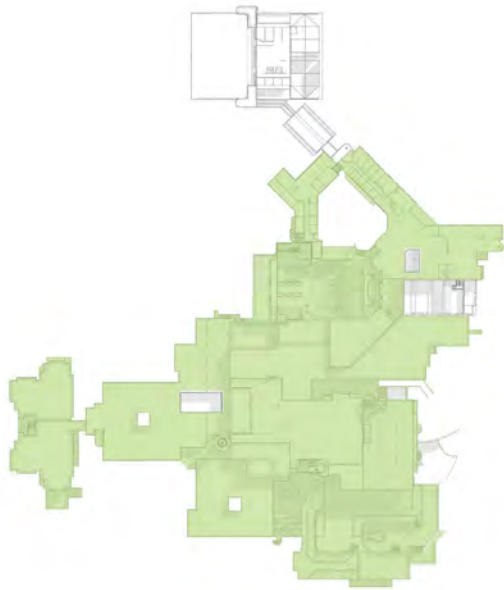
## Existing



# inside

## floors | carpet - concrete

### Existing Location

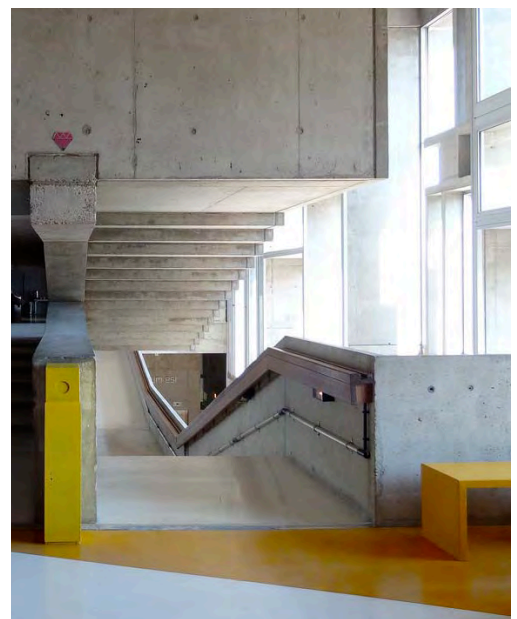


### Description

Floors are re-surfaced with a concrete topping to create a seamless concrete surface. Carpet is setback from the walls and inlaid into new topping slab. Bright coloured carpet or epoxy floors contrasts with the neutral palette of the concrete surfaces.



precedent - colour accents to concrete palette



# inside floors | carpet - concrete

## Proposal



## Existing





# inside

## walls | non load-bearing

### Existing Location

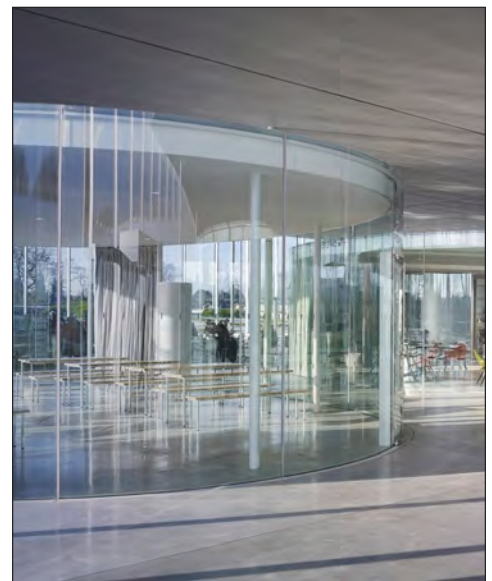


### Description

Non-load bearing walls are replaced with glazed walls or active walls. Glazed walls establish connections between rooms. Active walls allow all surfaces to be incorporated into the learning environment. Examples include black or white boards or climbing walls and so on.



precedent



# inside walls | non load-bearing

Proposal



Existing





# inside

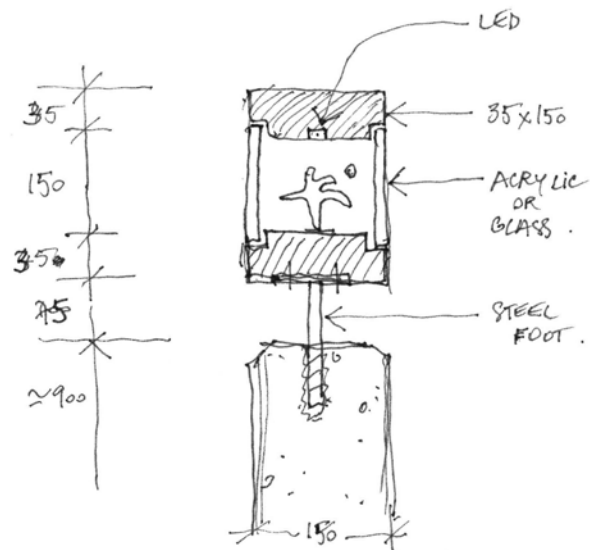
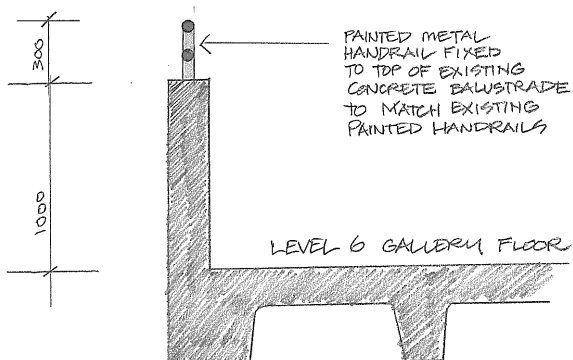
## walls | interior balustrades & handrails

### Existing Location



### Description

Balustrades and handrails are upgraded to comply with BCA regulations and the Department of Education requirements. Staircase handrails replicate the existing in the upgrade to compliant fixtures. Balustrade's are fixed above the existing and incorporate display cases.



details

# inside

## walls | interior balustrades & handrails

Proposal

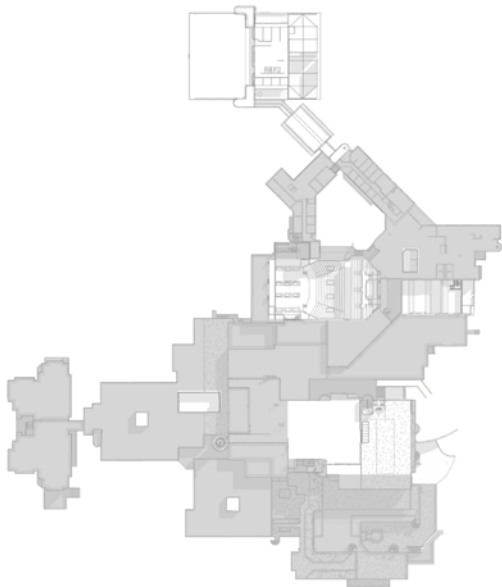
Existing





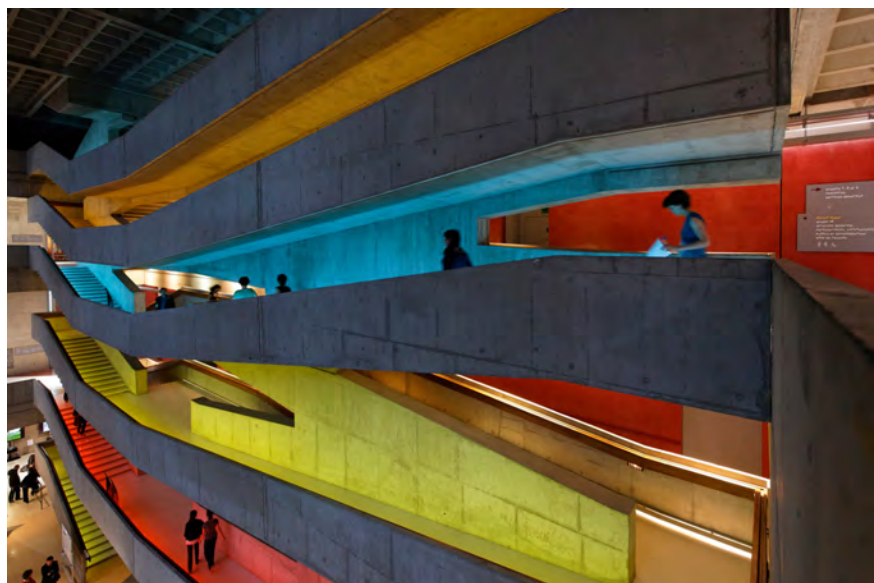
# inside ceilings | waffle slabs - lighting

## Location



## Description

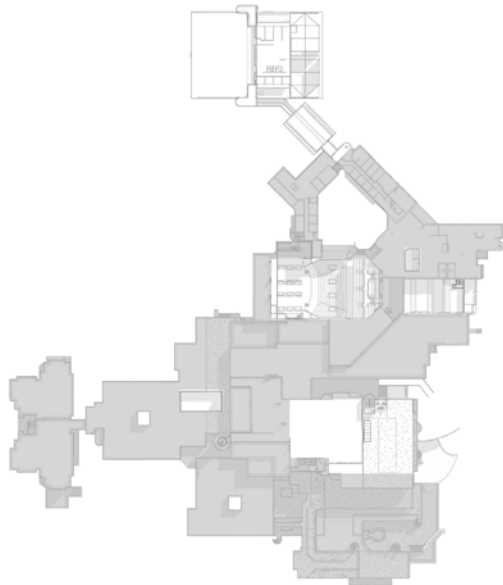
Waffle slab coffers will provide an opportunity for lighting.  
As in the recently renovated UTS chancellery, Barissol translucent membrane will be stretched over some coffers. LED lights will glow through it. They will enhance the existing poor lighting level and contribute to introduce colours patches.



precedent: Centre National de la Danse, Pantin. Robain-Guyesse architects

# inside ceilings | waffle slabs - services

## Location



## Description

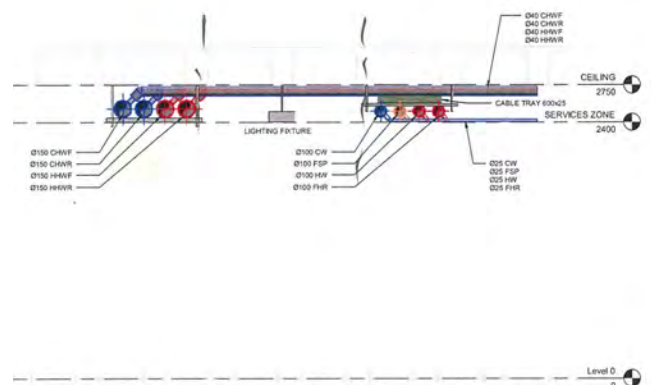
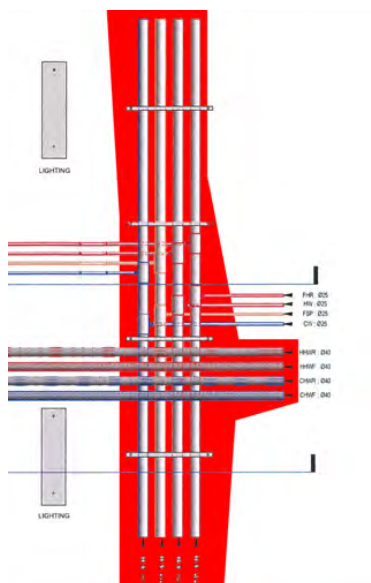
When undercroft available, all services will route through them. Services will then be coming up in several strategic location to allow full flexibility of usage. Ducts and trays will be reduced to a minimum.

For upper levels, where there are no undercrofts, the services will be combined and travel on cable trays.

The cable trays will be made with the same metal sheets as the outside cladding and follow a jagged geometry in keeping with all other interventions.

Lights and ducts will be painted in the same colour in order to create an harmonious ensemble with all new interventions.

## Existing



Careful coordination will be the key to the design of new services distribution.



# inside

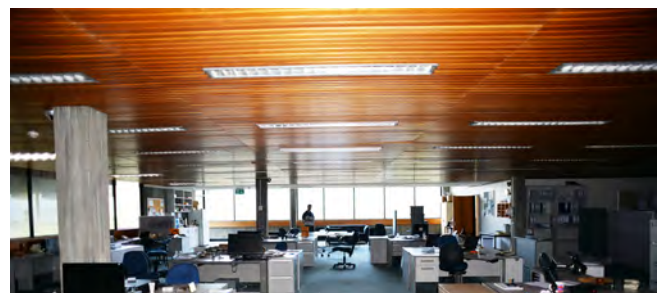
## ceilings | existing timber ceilings

### Existing Location



### Description

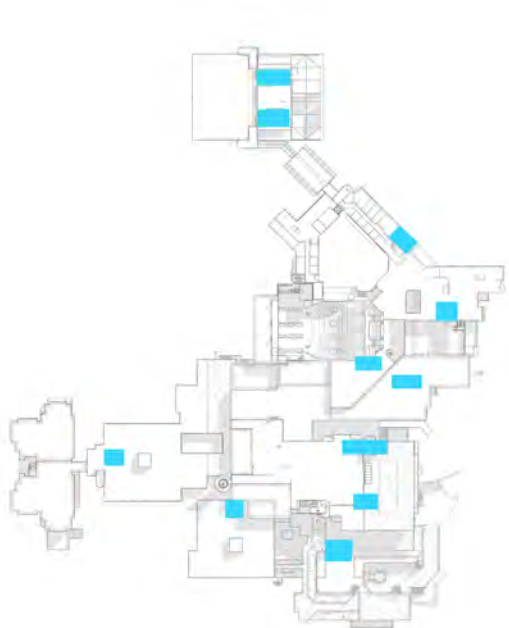
The timber-slatted Library ceiling will be kept where possible. A light well located deep within the floorplate will allow natural light to penetrate. Up-lights will enhance the warm hue of the ceiling.



# inside

## other | wet areas

### Existing Location



### Description

Existing bathrooms will be replaced by new facilities better suited to children and adults and to ensure compliance with Australian Standards.

The existing material palette of brightly coloured laminex surfaces will be used to link back to the original 70's building.

### Existing

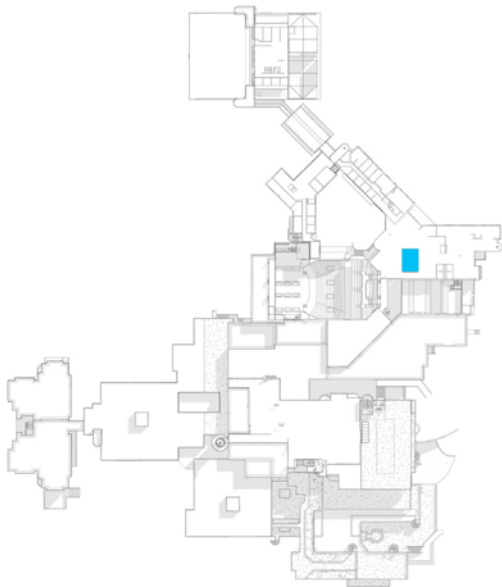




# inside

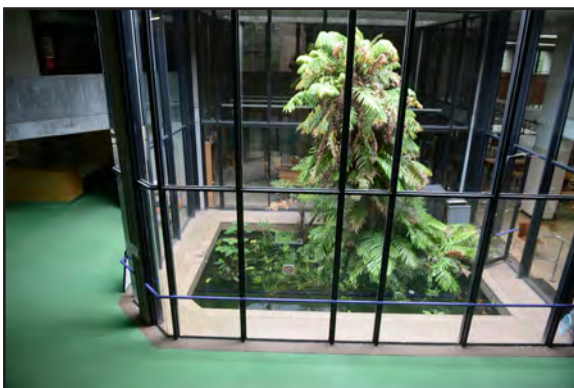
## other | fish pond / internal garden

### Existing Location

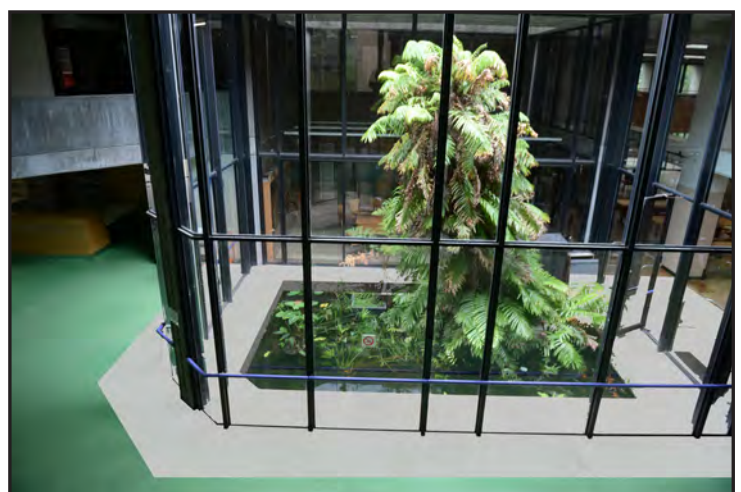


### Description

Existing internal gardens / fish pond will be retained. Changes to flooring and ceilings next to these items will highlight these elements.



Existing

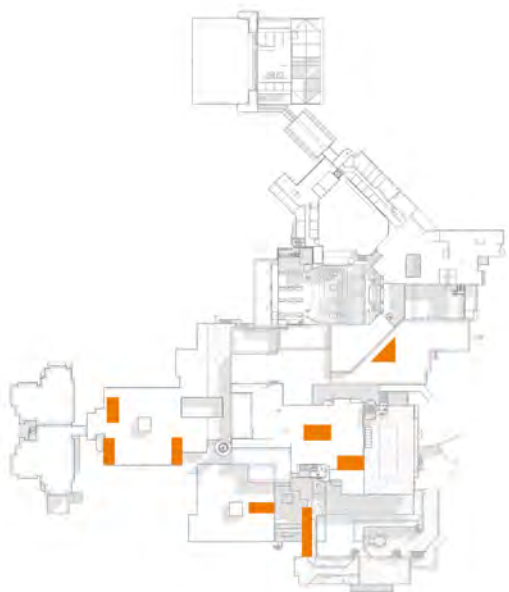


Proposal

# inside

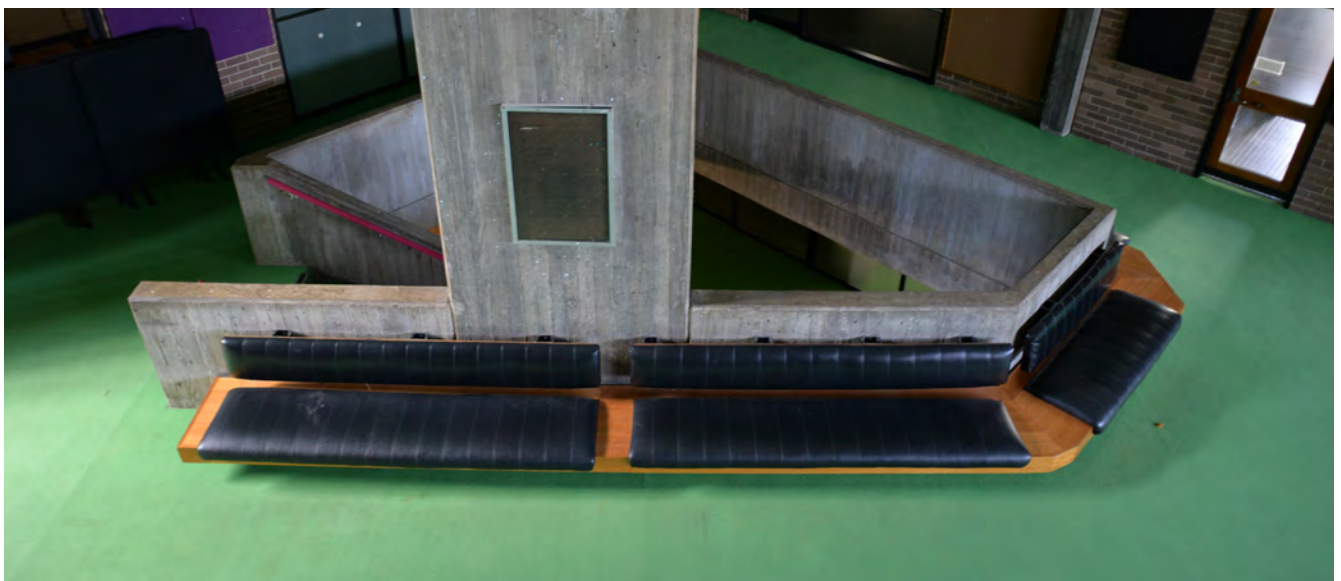
## other | built-in furniture

### Existing Location



### Description

Built-in furniture will be refurbished where ever possible in keeping with the original design. Some alterations of the furniture or the surrounding will need to be modified to suit new layouts.





# inside

## other | new furniture

### Description

The new furniture will be designed or chosen according to the same principles - same materials - same geometries.  
New built-in furniture will be reversible.

