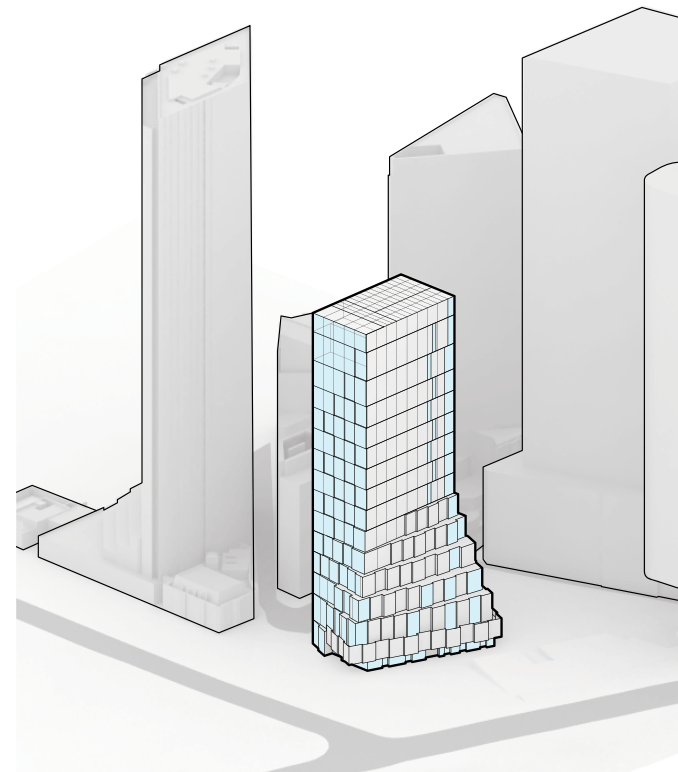


Facade Design

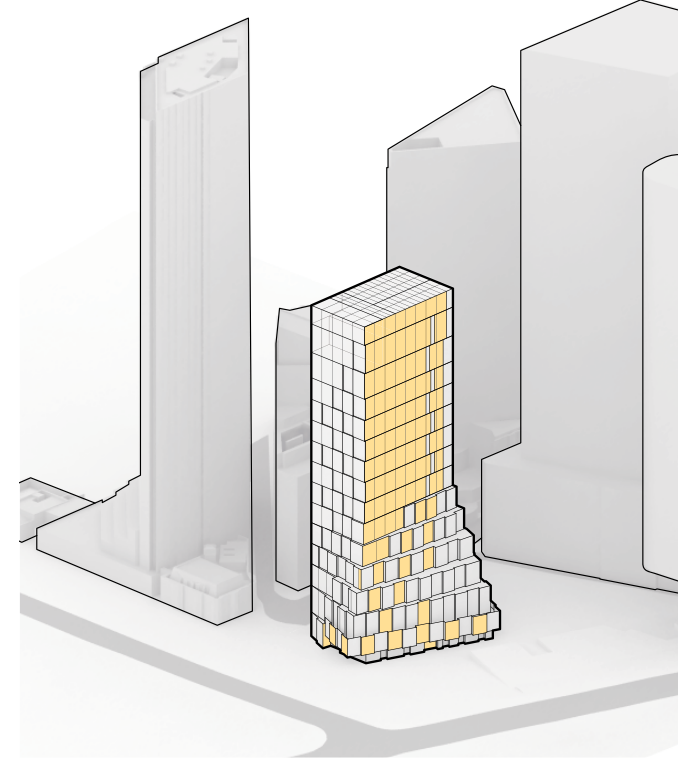
Materiality | Concept

The facades' "pixels" consist of three primary material types: glass pixels, sandstone pixels, and vegetated pixels. Each of the pixels measure approximately 7 meters (two stories) in height and 4 meters in width. In principle, the glass pixels provide views; sandstone pixels anchor the project to the historical use of the stone in other Sydney buildings, and vegetated pixels reintroduce the notion of Sydney as a city of parks (in this case a textured vertical garden that many can enjoy). Distribution and number of each pixel type varies according to the cardinal direction, in order to balance views, urban-scale tactility and human-scale experience, and energy performance.



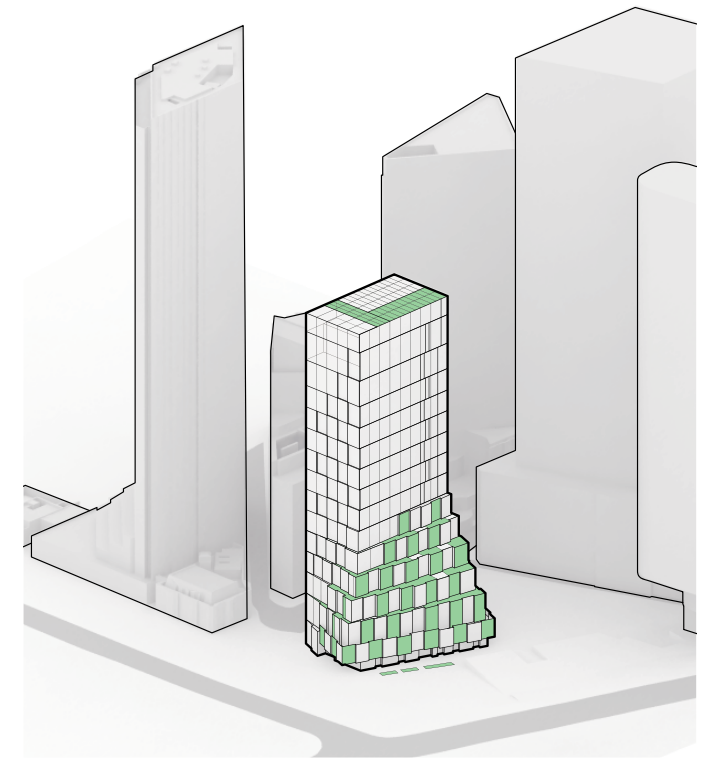
Glass Pixels

A standard facade unit stays smooth to maintain views, and pixelates towards retail below. While glazing is present on all facades, the north and east elevations feature glass as the principal material (note: Tower A not shown, for clarity)



Sandstone Pixels

Composite stone panels simulating Australian sandstone (from the first floor upward) and real sandstone at the ground floor relates to the sandstone of found in many of Sydney's buildings. These pixels appear mainly on the west and south facades, but appear as accents throughout (note: Tower A not shown, for clarity)



Vegetated Pixels

Abstracted landscape—utilizing local and indigenous flora—climbs the building from the laneway as a vertical city park. These are primarily deployed at the west, south, and roof facades, with accents at the north (note: Tower A not shown, for clarity)

Facade Design

Materiality Palette



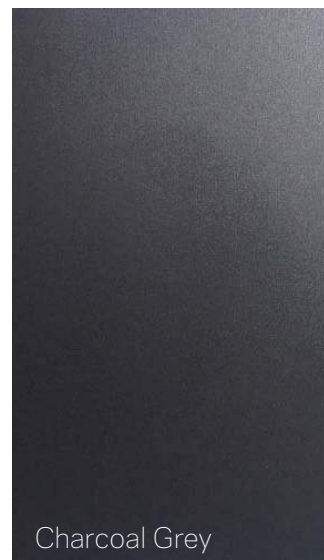
Glass
At all areas requiring view



Sandstone | GFRG
Relating the building to contemporary and historical buildings. Sandstone to Ground, GFRG above Ground level



Vegetation
Introducing nature into the design



Charcoal Grey



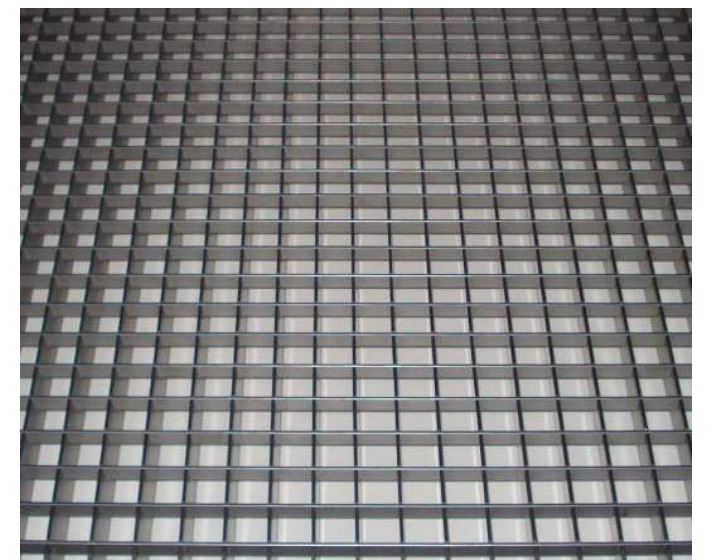
Satin Silver

Anodized Aluminium
At infill panels, mullions, architectural gaps, other background elements



Austral Black

Australian Granite
At landscape and key ground floor spaces, to connect to surrounding use of the stone in the city.



Aluminium Grate
At roof only—keeping a visually clean roofscape

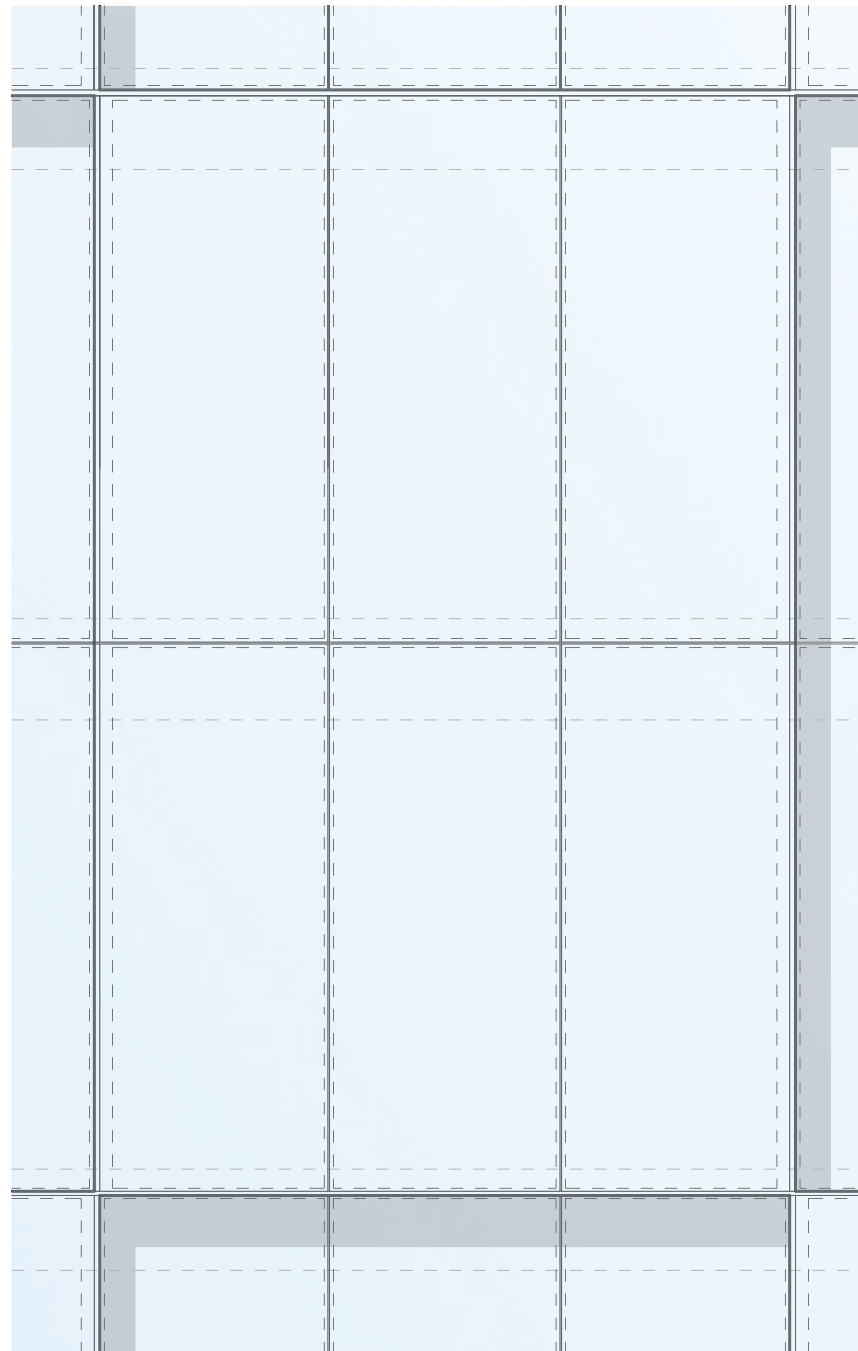
Facade Design

Materiality | Glass Pixel

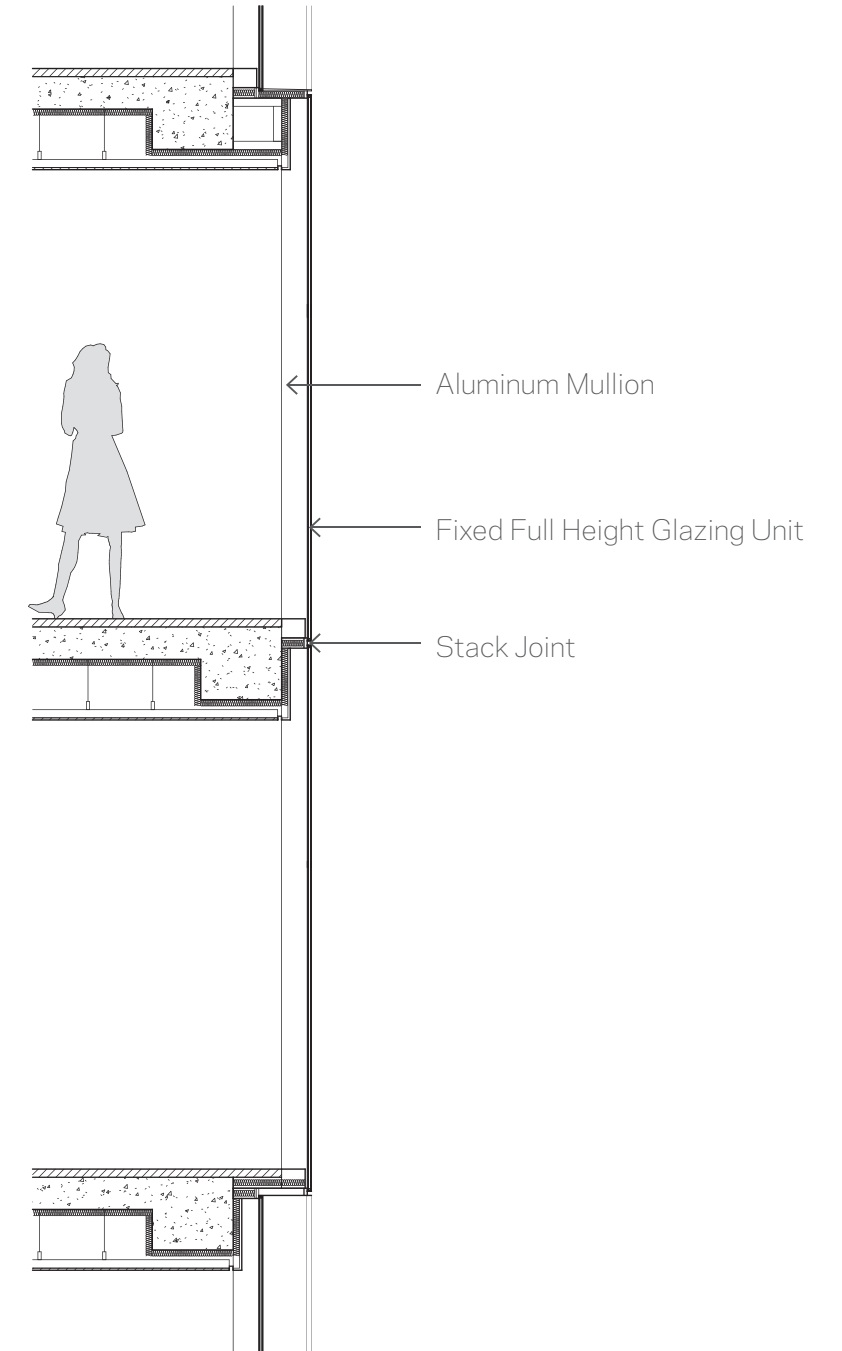
The glass pixels are modular, glazed curtain wall, with framing minimized to preserve the views and to maintain a sharp, high-resolution appearance. The glass has been chosen such that it balances transparency (as an experiential and aesthetic goal) and reflectivity (minimized per regulation requirement), with an overall colour and sheen that complements the other high-end examples along the Sydney skyline.



Sectional Axonometric Diagram



Partial Elevation



Partial Wall Section



Partial Plan

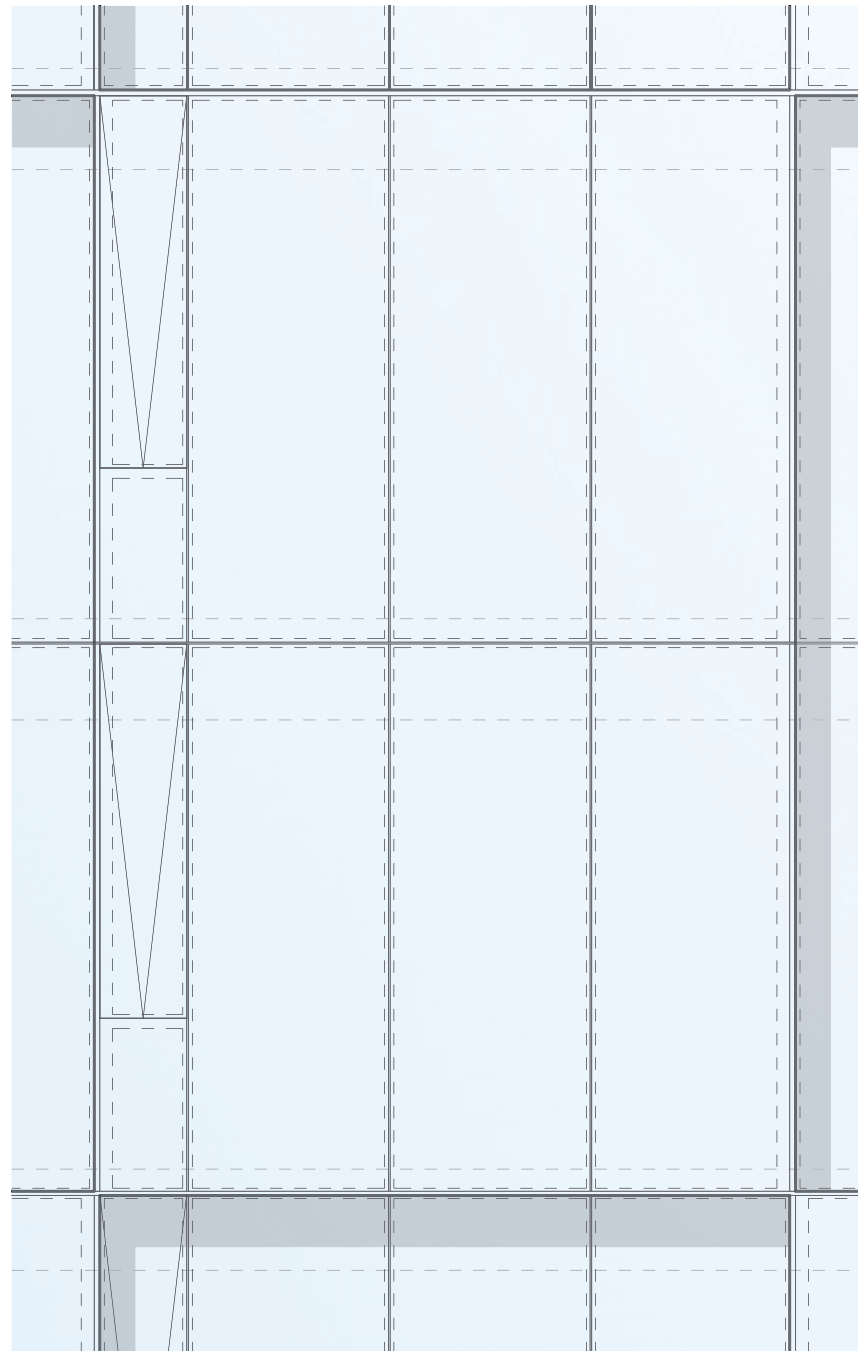
Facade Design

Breathable Facade

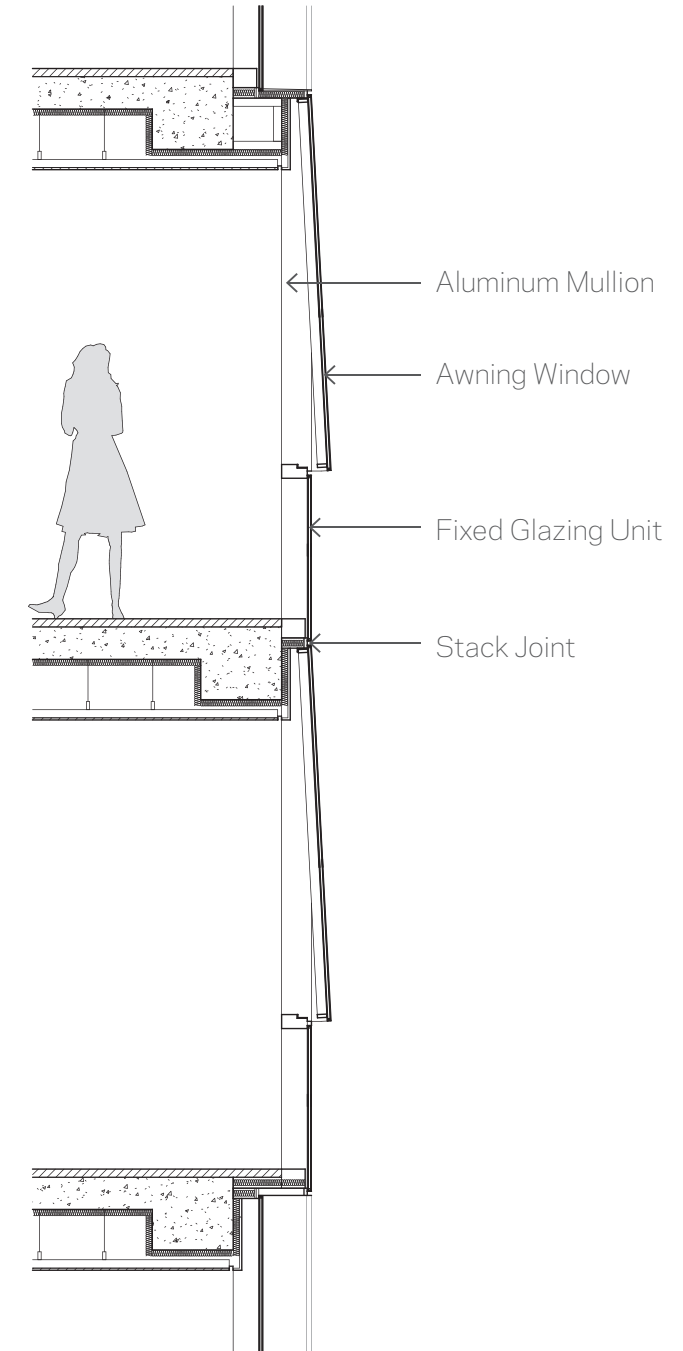
The curtain wall system integrates operable units as part of a holistic energy performance and sustainability strategy. These offer the option of natural ventilation to the occupants of the hotel, with airflow and pressures balanced with the overall mechanical/ventilation management master plan. The aesthetic intent requires for the detailing to remain similarly minimal and integrated with the typical pixel, while keeping a manageable weight for the operable panel.



Sectional Axonometric Diagram



Partial Elevation



Partial Wall Section



Partial Plan

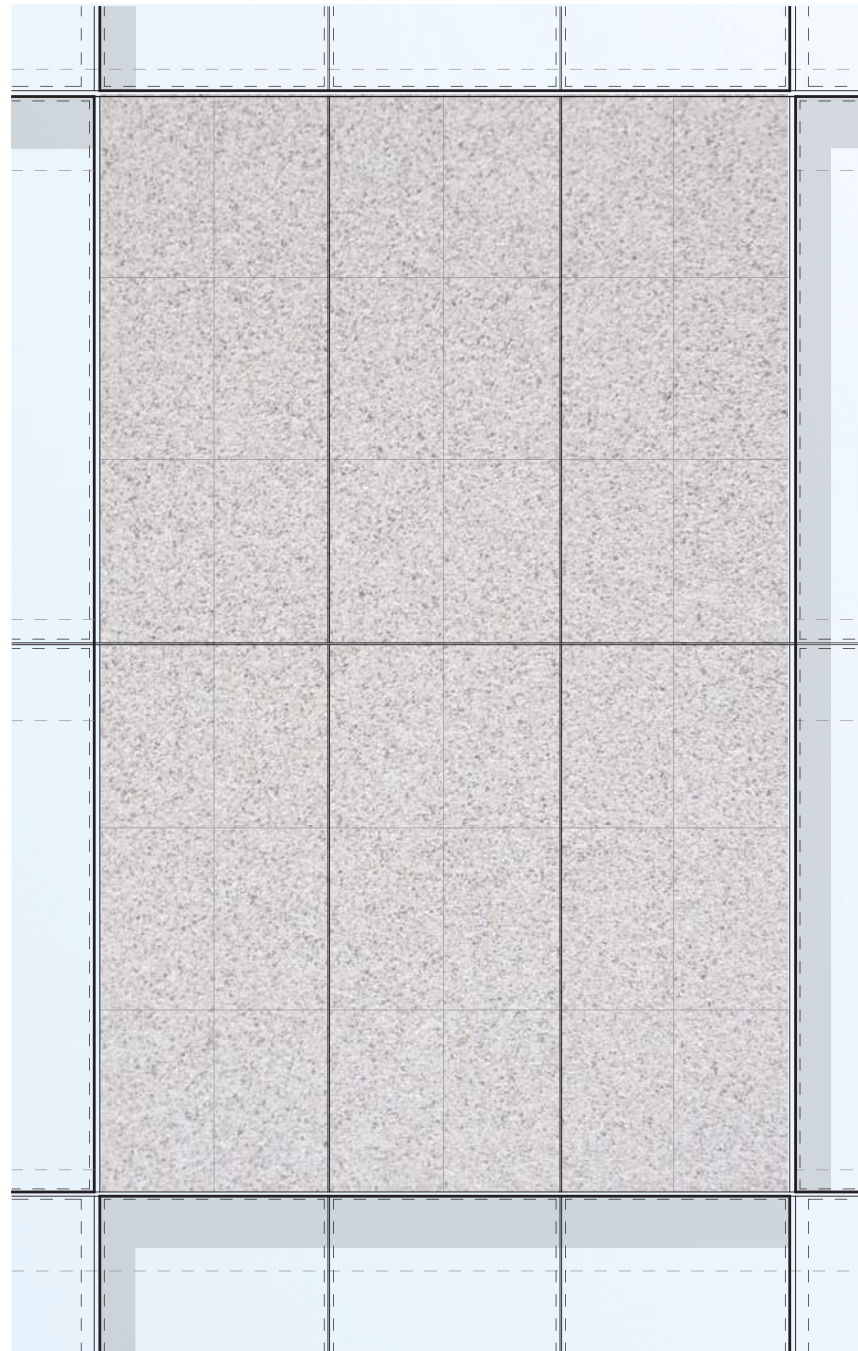
Facade Design

Materiality | Sandstone Pixel

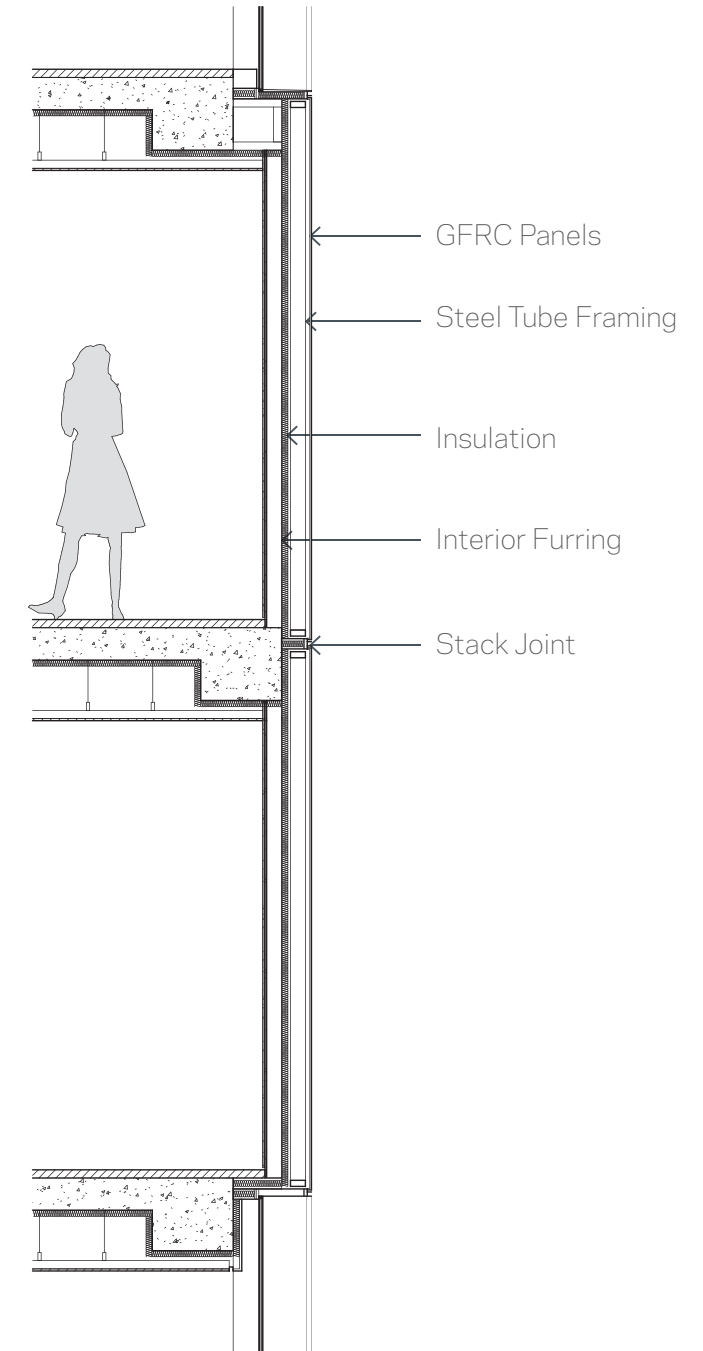
Conceptually, the stone of the project aims to connect the building to the rest of the city with the existing examples of Australian sandstone, appearing in other neighboring buildings. In reality, the stone pixels fall into two categories: actual sandstone masonry (deployed at the ground level and in areas close to human contact, for an authentic tactile experience) and simulated composite stone (for practical weight, installation, and maintenance reasons, currently being selected for color and weathering match). For a refined appearance the color of the stone throughout keeps to a lighter cream or off-white range, rather than a heavier, saturated yellow shade.



Sectional Axonometric Diagram



Partial Elevation



Partial Wall Section



Partial Plan

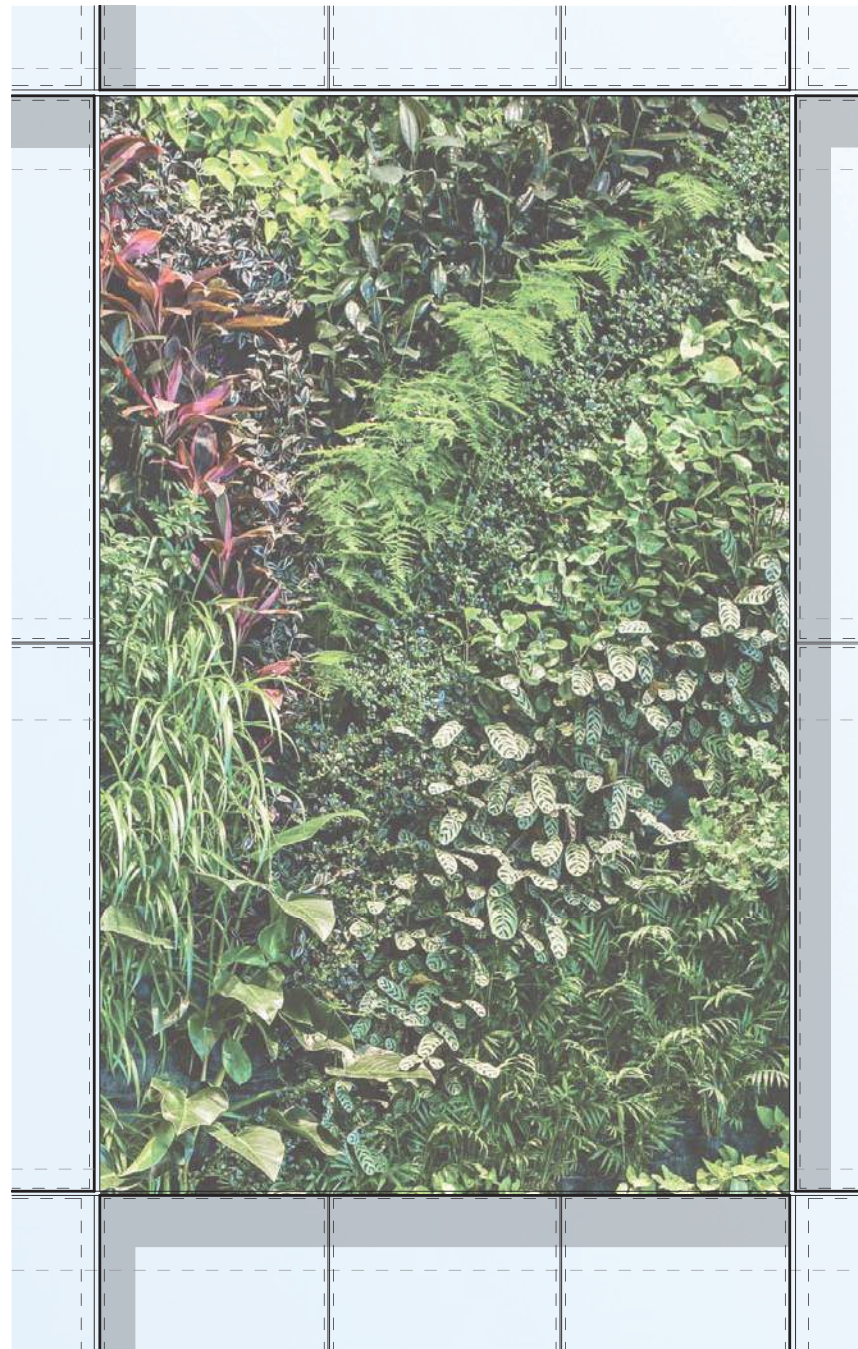
Facade Design

Materiality | Vegetated Pixel

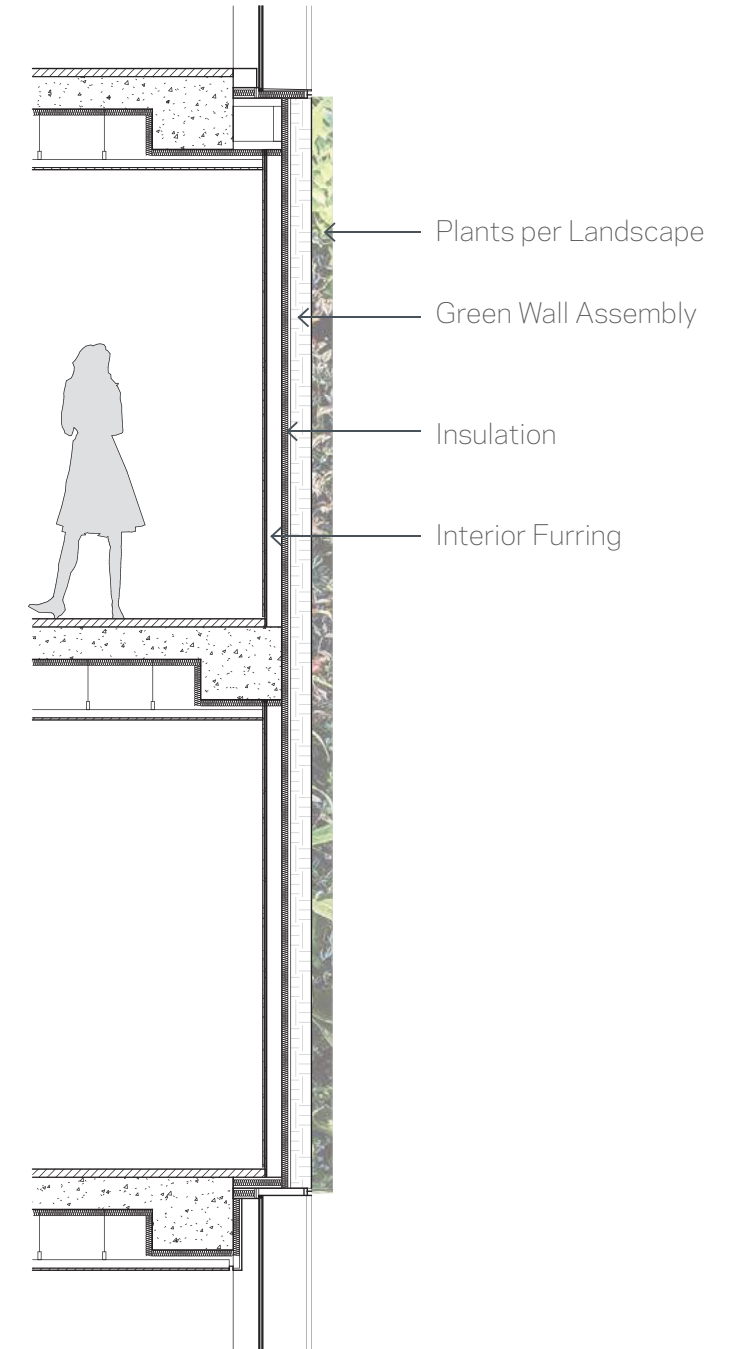
As a key way of introducing nature into the project, but according to the overall building concept, the vegetation also appears on the building in the same, consistent series of pixels. Carefully selected indigenous species are chosen to match available light and air conditions—flowering, and non-flowering alike, and to minimize water requirements and maintenance. The system is a non-custom, standard construction build-up, modularized for easy replacement as needed. Experientially, the planted pixels bring color, texture, and humanity to the lower half of the building, primarily at the west and south facades—expressing the building as garden architecture, emerging from and combining both the city and nature.



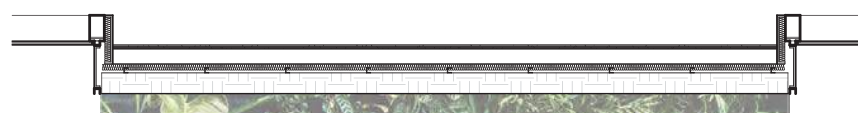
Sectional Axonometric Diagram



Partial Elevation



Partial Wall Section



Partial Plan