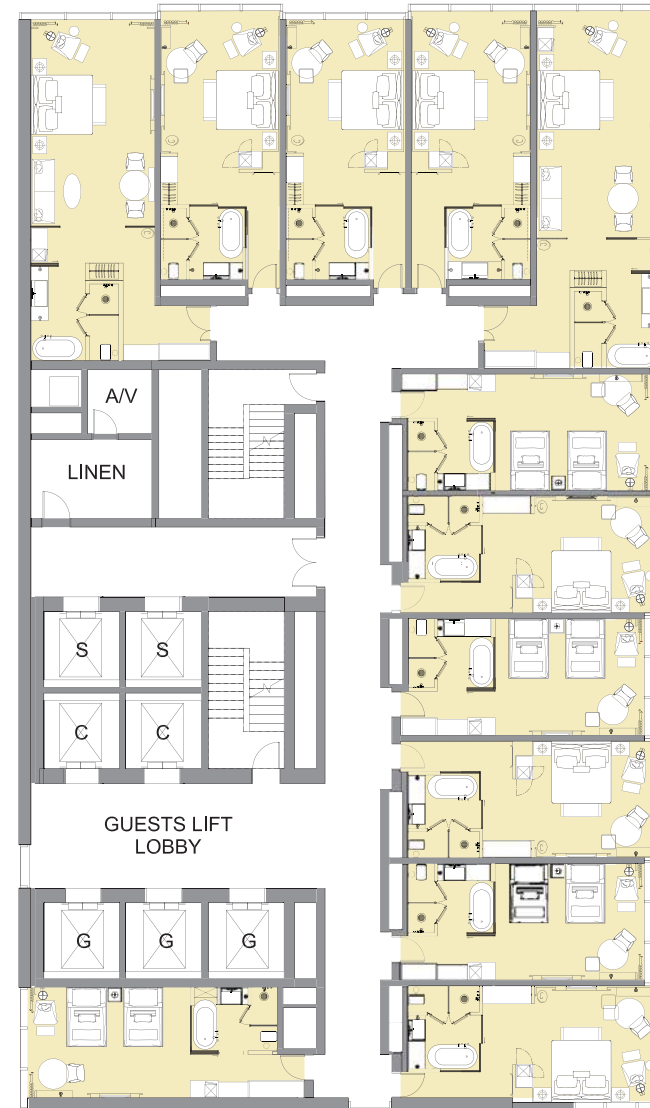


The hotel interiors will match the quality and elegance of the Wanda Vista brand.

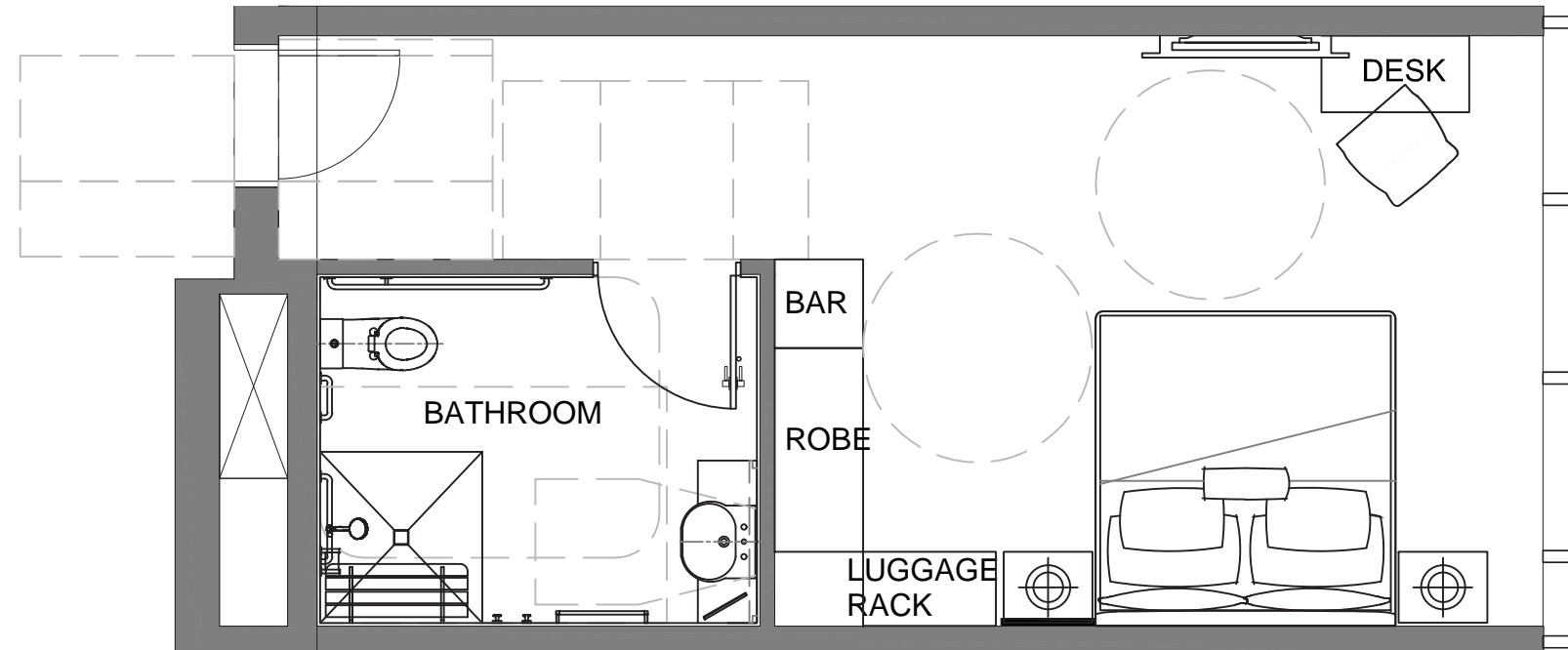
The Wanda Vista Sydney Hotel interiors will be designed by Wanda's interiors department HDI and further developed by local firm STACK studio.

An indicative interior layout by HDI describes the main design intent for the typical levels.



Typical Hotel Level
Indicative Furniture Layout by Wanda HDI

Design Proposal
Accessible Hotel Rooms



Typical Accessible Room by STACK

Design Proposal

Rooftop Bar

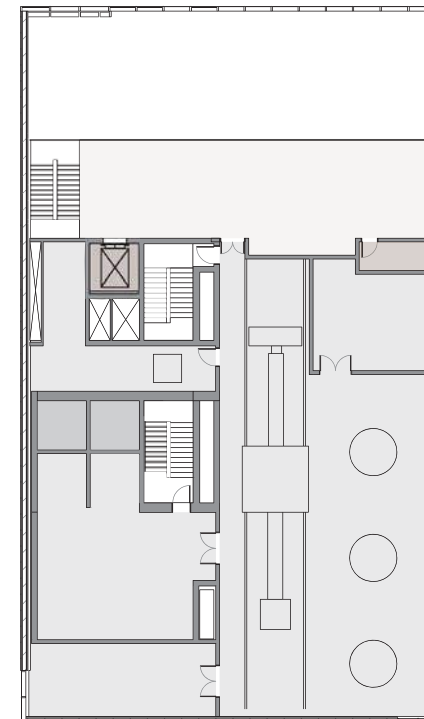
An unforgettable experience framed by the Harbour Bridge and the Opera House.

With commanding views over the harbour and the city beyond, Wanda's roof top bar will be a destination in itself.

A large bar area opens up to a double height volume to the north. Landscaped gardens reference the natural elements at the lower levels of the building, and bring life into this indoor | outdoor room.



Level 24 - KTV & Bar



Level 25 - Bar mezzanine & Plant



1. Indoor | outdoor Roof Top Bar
Competition concept rooftop image



2. Roof Top Bar
Concept image: Cafe Sydney



3. Roof Top Bar
View from balcony on New Year's Eve

Design Proposal

Basement

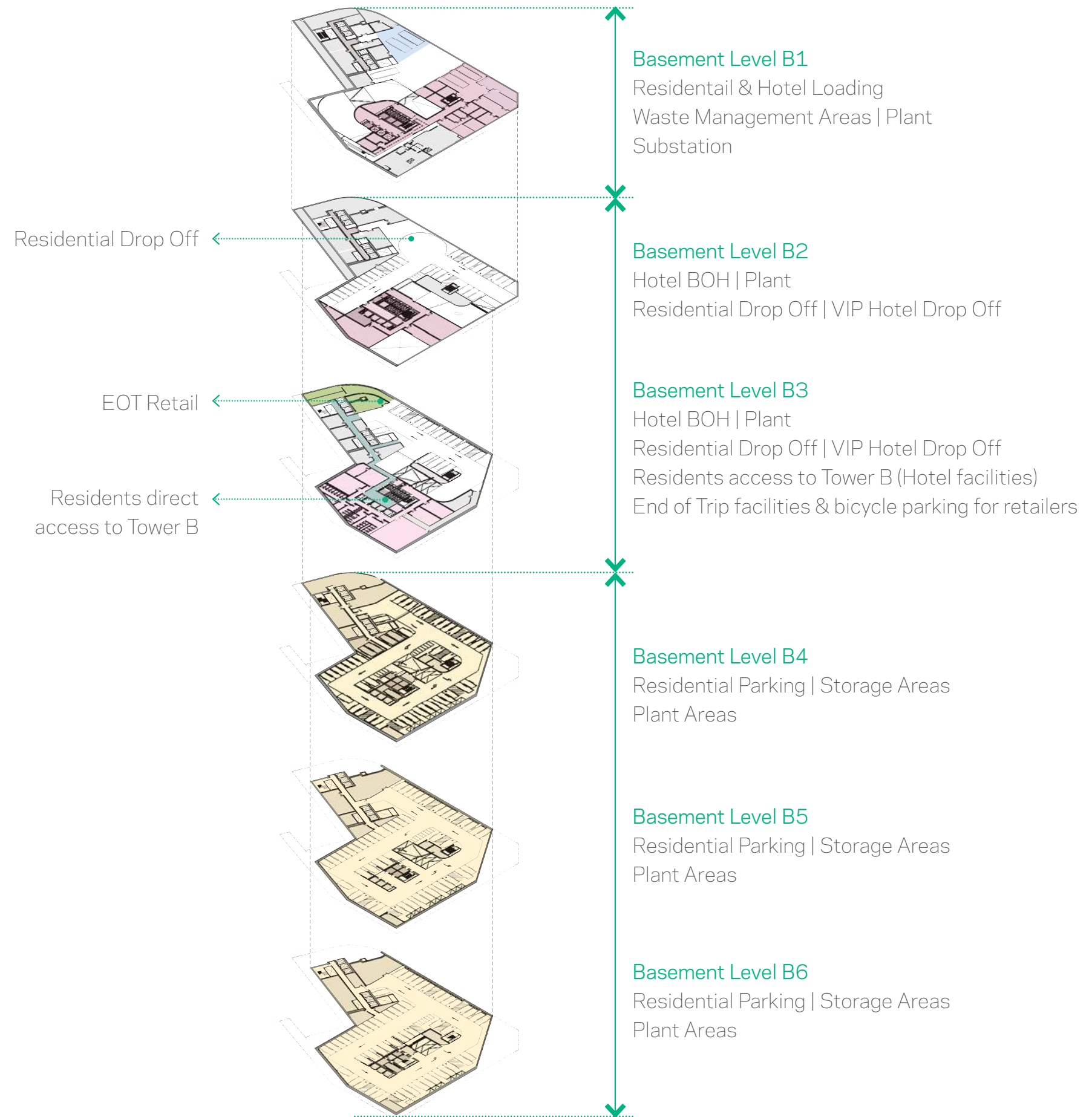
The extent of the basement levels and planning arrangements have been considered in light of:

- different building uses,
- clearances for rail easements and heritage items (tank stream),
- substation location,
- Pitt Street access point,
- traffic constraints at ground,
- security requirements.

Apart from the residential drop off on level B2, residential parking areas have been segregated from hotel and retail areas.

Retailers are expected to access Level B3 using the hotel service lifts. Access is controlled by hotel security at ground level.

The combined Tower A and Tower B basement is beneficial to the public domain by reducing vehicle cross overs while still achieving a high quality, exclusive entry.



05 ————— Facade Design



Facade Design Overview

The project facades are composed by large, urban “pixels” that allow for a cohesive design, but with different expressions depending on the direction. Each façade is distinct and nuanced. Sydney Wanda Vista Hotel occupies a prominent site at the edge of the waterfront and the city, with different conditions on all sides. By way of the pixels, the building volume gradually shifts from the city grid below to the logic of the hotel above. Correspondingly, the elevations respond to these differing conditions in kind: uninterrupted and cleanly detailed glass facades with stone accents to the north and to the east to embrace the views, and a combination of sandstone and vegetation to the west and south to present a warmer, more natural palette to the city.



View from Pitt Street (Towards Circular Quay)

This view shows the transition from the rhythmic glass treatment on the east façade at Pitt Street, to the softer mixture and more random materials of the Rugby Place laneway. Future Lendlease CQT shown indicatively dashed (DA not yet submitted).



View from Herald Square

The north façade shows a crisp, crystalline character, maximizing views for the hotel guests. The west façade along the through-site laneway hints at a more textured world, with stone and vegetation in a lush mix, appropriate for leisure activities