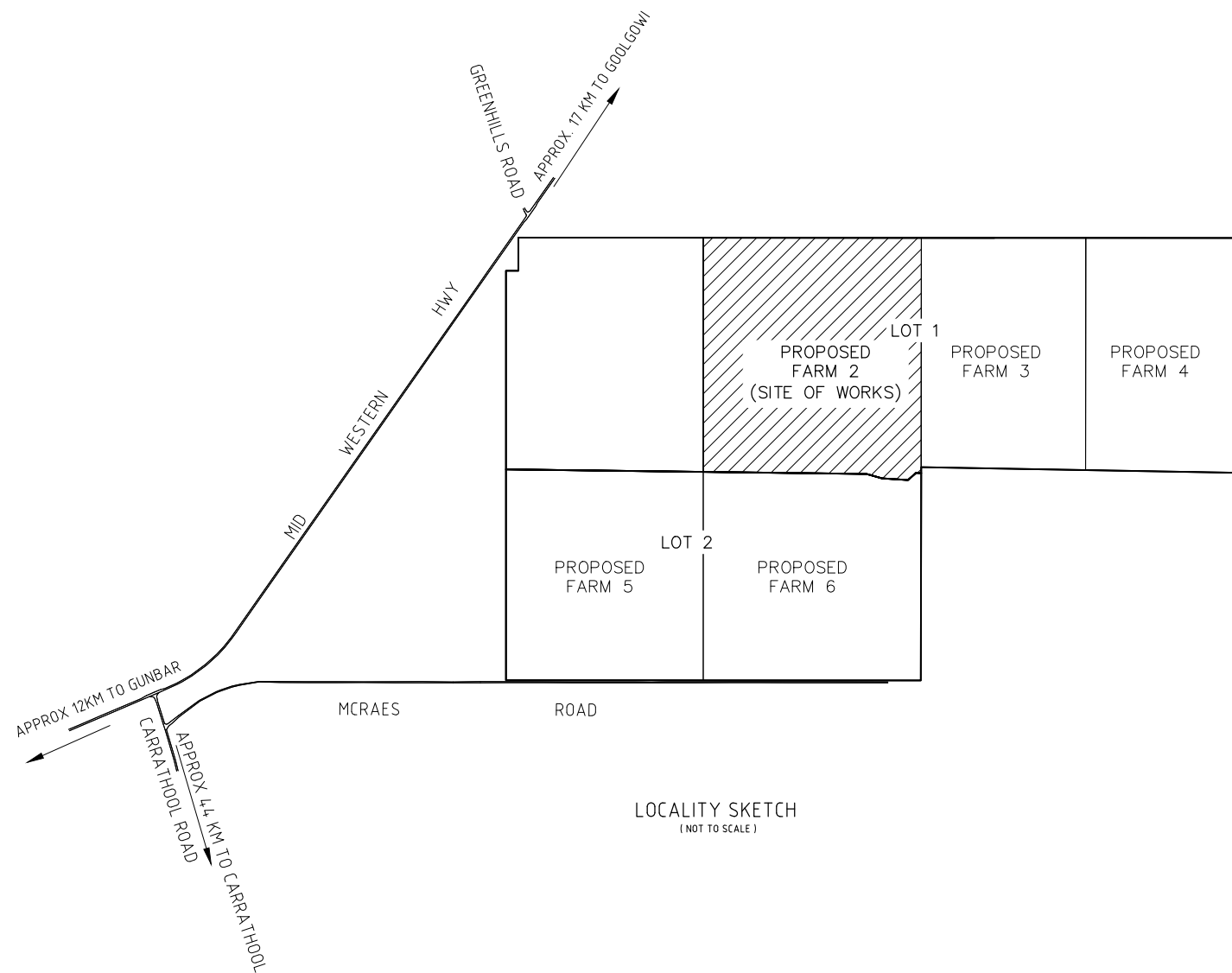


PROPOSED POULTRY FARM FARM 2

LOT 1 IN DP 749831 MID WESTERN HWY, GOOLGOWI



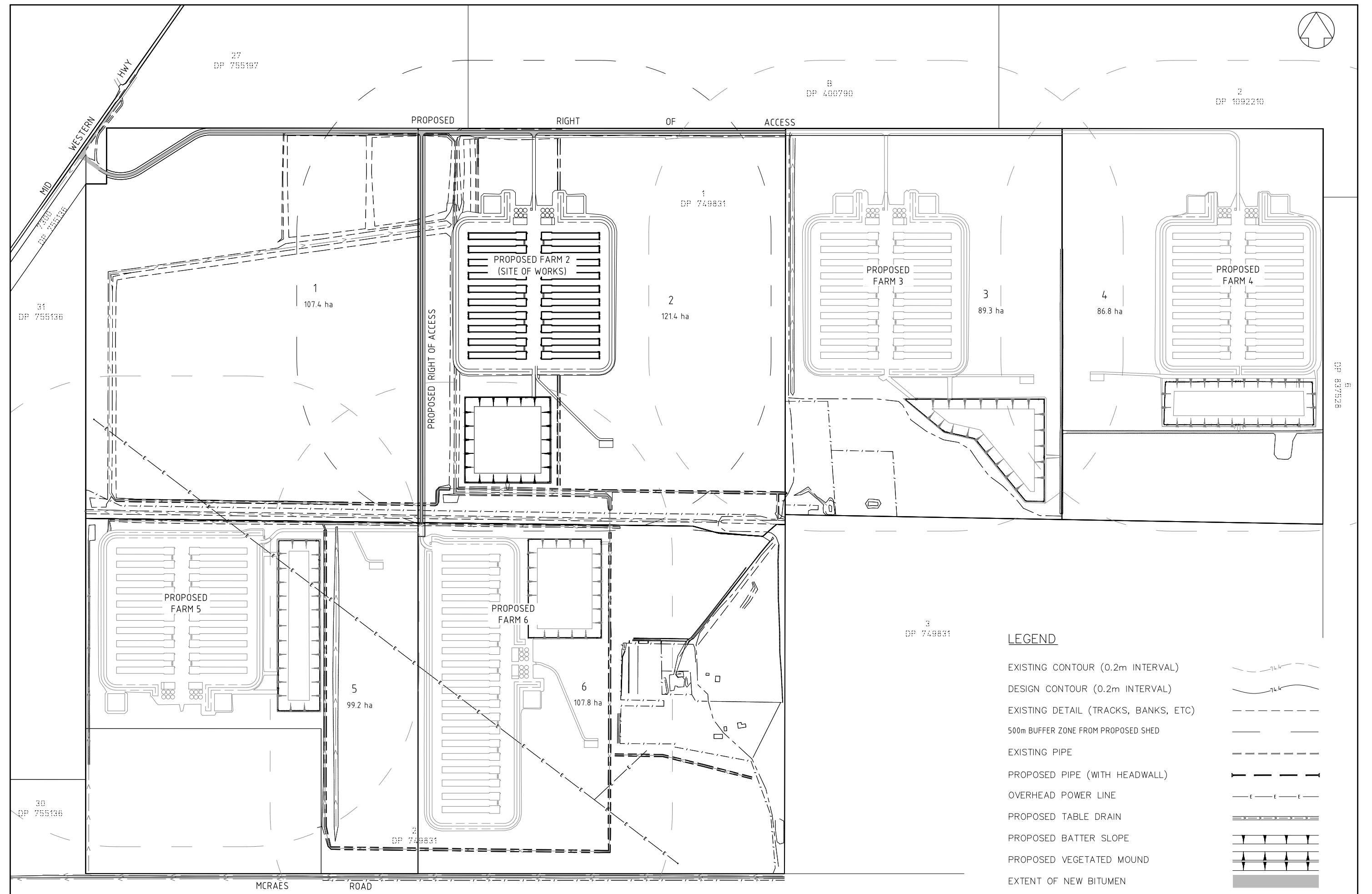
LOCALITY SKETCH
(NOT TO SCALE)

Schedule of Drawings			
Sheet	File Number	Description	Revision
1	21600083	TITLE PAGE, LOCALITY SKETCH & TABLE OF CONTENTS	C
2	21600084	PROPOSED LAYOUT ENTIRE DEVELOPMENT	C
3	21600085	FARM 2 OVERALL LAYOUT	C
4	21600385	DETAIL PLAN 1 PROPOSED INTERSECTION	B
5	21600086	DETAIL PLAN 2 SHEDS 1 TO 14	C
6	21600087	DETAIL PLAN 3 SHEDS 13 TO 20 & DAM	C
7	21600088	FARM 2 SECTION A	B
8	21600089	FARM 2 SECTION B	B
9	21600090	FARM 2 SECTION C	B
10	21600386	STORMWATER LONGITUDINAL SECTIONS	B
11	21600091	MACHINERY SHED DETAILS	A
12	21600092	POULTRY SHED DETAIL	B
13	21600439	COMPOSTING SHED DETAIL	A

Designed By

TATTERSALL LANDER PTY LTD
DEVELOPMENT CONSULTANTS IN ENGINEERING, SURVEYING & PLANNING
PO Box 580 RAYMOND TERRACE Phone (02) 4987 1500





LEGEND

- EXISTING CONTOUR (0.2m INTERVAL)
- DESIGN CONTOUR (0.2m INTERVAL)
- EXISTING DETAIL (TRACKS, BANKS, ETC)
- 500m BUFFER ZONE FROM PROPOSED SHED
- EXISTING PIPE
- PROPOSED PIPE (WITH HEADWALL)
- OVERHEAD POWER LINE
- PROPOSED TABLE DRAIN
- PROPOSED BATTER SLOPE
- PROPOSED VEGETATED MOUND
- EXTENT OF NEW BITUMEN

REV	DETAILS OF AMENDMENT	DESIGNED	DRAWN	CHECKED	APPROVED	DATE
C	Additional Reservoirs & Ventilation Stacks	DS	DS	CG*	BL*	29/11/17*
B	Farm 1 Removed	DS	DS	-	-	13/09/17*
A	Original Issue	DS	DS	-	-	13/10/16*

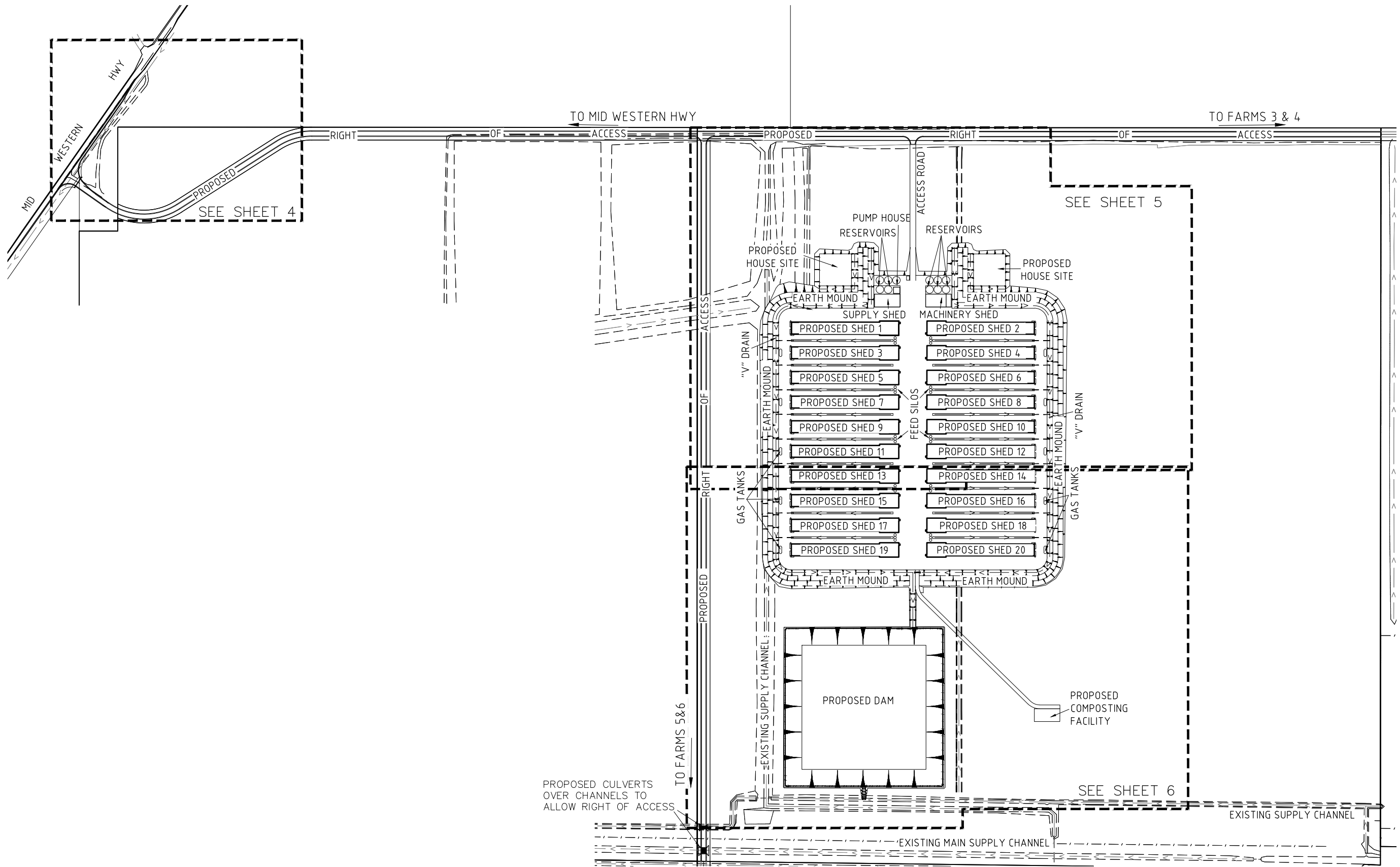
TATTERSALL LANDER PTY LTD
 DEVELOPMENT CONSULTANTS
 ENGINEERING, SURVEYING & PLANNING
 2 Bourke St. P.O.Box 580
 RAYMOND TERRACE 2324
 Fax (02) 49871733 Phone (02) 49871500

PROPOSED POULTRY FARM
 LOT 1 & 2 IN DP 749831
 MID WESTERN HIGHWAY
 GOOLGOWI

CLIENT: JAMES & CATHY MUSCAT JOB No.: 215474 COMPUTER FILE : S:\Clients\2015\215474\0wgl\215474 Array 2 Design.dwg

COUNCIL CARRATHOOL	REFERENCE 21600084
PARISH WYCHEPROOF	SHEET SIZE A3
SCALE 1:10000	SHEET No. 2
DATE : Plotted 10/27 29/11/17	

* Denote the original signature and date when revision was issued.



PROPOSED CULVERTS
OVER CHANNELS TO
ALLOW RIGHT OF ACCESS

C	Additional Reservoirs & Ventilation Stacks	DS	DS	CG*	BL*	29/11/17*
B	Farm 1 Removed	DS	DS	-	-	13/09/17*
A	Original Issue	DS	DS	-	-	13/10/16*
REV	DETAILS OF AMENDMENT	DESIGNED	DRAWN	CHECKED	APPROVED	DATE
* Denote the original signature and date when revision was issued.						

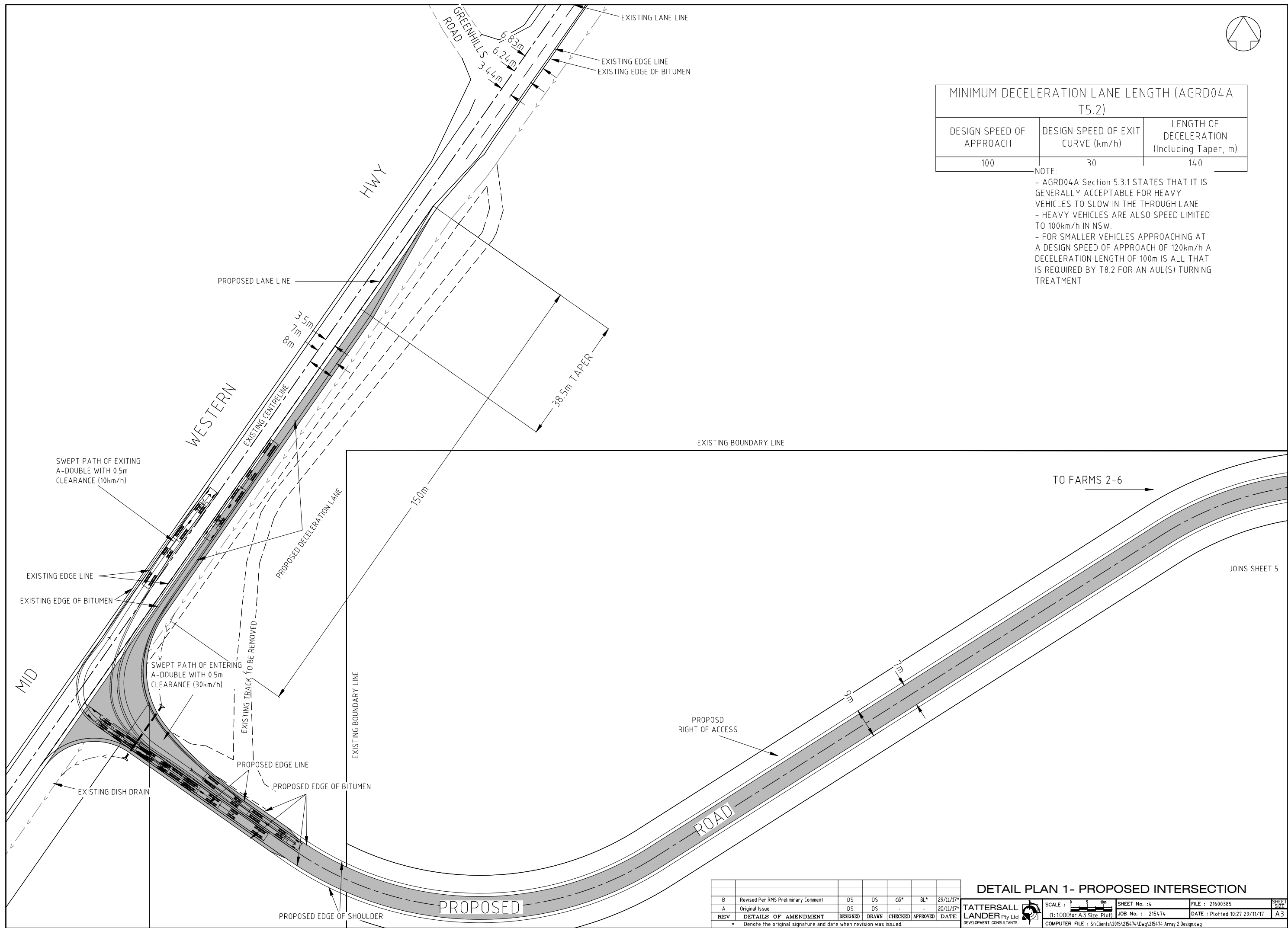
FARM 2 OVERALL

<p>TATTERSALL LANDER DEVELOPMENT CONSULTANTS</p>	SCALE :	SHEET No. : 3	FILE : 21600085	SHEET SIZE A3
	(1:6000 for A3 Size Plot)	JOB No. : 215474	DATE : Plotted 10:27 29/11/17	
COMPUTER FILE : S:\Clients\2015\215474\Drawings\215474 Array 2 Design.dwg				



MINIMUM DECELERATION LANE LENGTH (AGRD04A T5.2)		
DESIGN SPEED OF APPROACH	DESIGN SPEED OF EXIT CURVE (km/h)	LENGTH OF DECELERATION (Including Taper, m)
100	30	14.0

NOTE:
 - AGRD04A Section 5.3.1 STATES THAT IT IS GENERALLY ACCEPTABLE FOR HEAVY VEHICLES TO SLOW IN THE THROUGH LANE.
 - HEAVY VEHICLES ARE ALSO SPEED LIMITED TO 100km/h IN NSW.
 - FOR SMALLER VEHICLES APPROACHING AT A DESIGN SPEED OF APPROACH OF 120km/h A DECELERATION LENGTH OF 100m IS ALL THAT IS REQUIRED BY T8.2 FOR AN AUL(S) TURNING TREATMENT

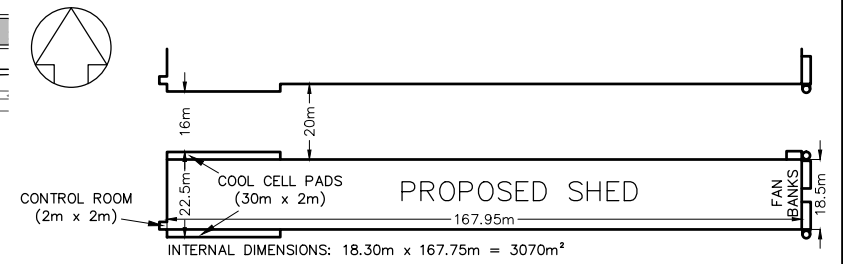
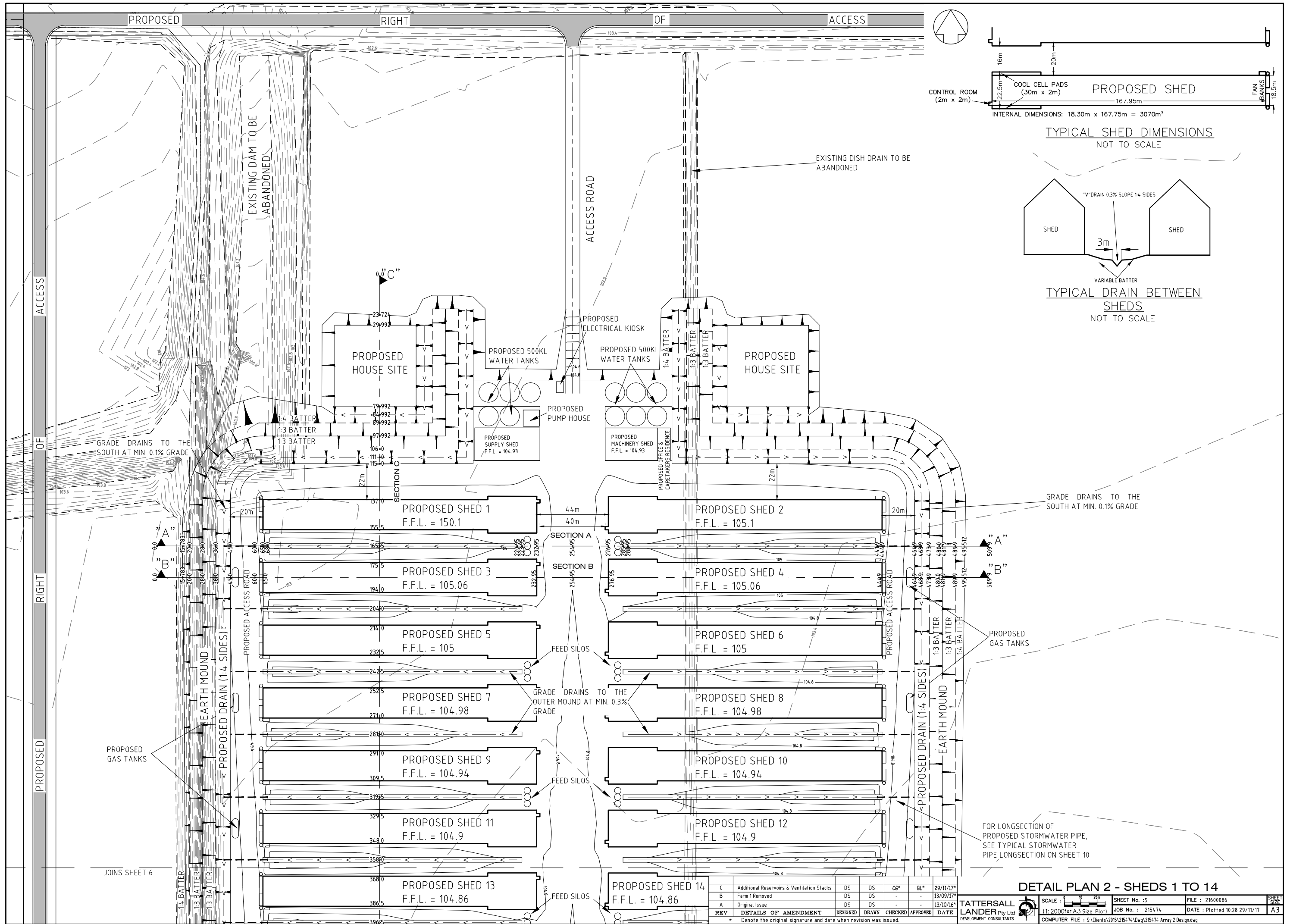


REV	DETAILS OF AMENDMENT	DESIGNED	DRAWN	CHECKED	APPROVED	DATE
B	Revised Per RMS Preliminary Comment	DS	DS	CG*	BL*	29/11/17*
A	Original Issue	DS	DS	-	-	20/11/17*

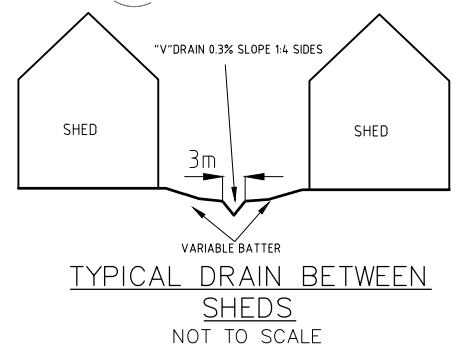
DETAIL PLAN 1- PROPOSED INTERSECTION

TATTERSALL LANDER Pty Ltd DEVELOPMENT CONSULTANTS	SCALE : 1:1000 or A3 Size Plot	SHEET No. : 4	FILE : 21600385	SHEET SIZE : A3
	COMPUTER FILE : S:\Clients\2015\215474\DWG\215474 Array 2 Design.dwg	JOB No. : 215474	DATE : Plotted 10/27 29/11/17	

* Denote the original signature and date when revision was issued.



TYPICAL SHED DIMENSIONS NOT TO SCALE



GRADE DRAINS TO THE SOUTH AT MIN. 0.1% GRADE

FOR LONGSECTION OF PROPOSED STORMWATER PIPE, SEE TYPICAL STORMWATER PIPE LONGSECTION ON SHEET 10

DETAIL PLAN 2 - SHEDS 1 TO 14

REV	DETAILS OF AMENDMENT	DESIGNED	DRAWN	CHECKED	APPROVED	DATE
C	Additional Reservoirs & Ventilation Stacks	DS	DS	CG*	BL*	29/11/17*
B	Farm 1 Removed	DS	DS	-	-	13/09/17*
A	Original Issue	DS	DS	-	-	13/10/16*

* Denote the original signature and date when revision was issued.



JOINS SHEET 5

GRADE DRAINS TO THE SOUTH AT MIN. 0.1% GRADE

PROPOSED GAS TANKS

EARTH MOUND
PROPOSED DRAIN

PROPOSED GAS TANKS

EARTH MOUND
PROPOSED DRAIN

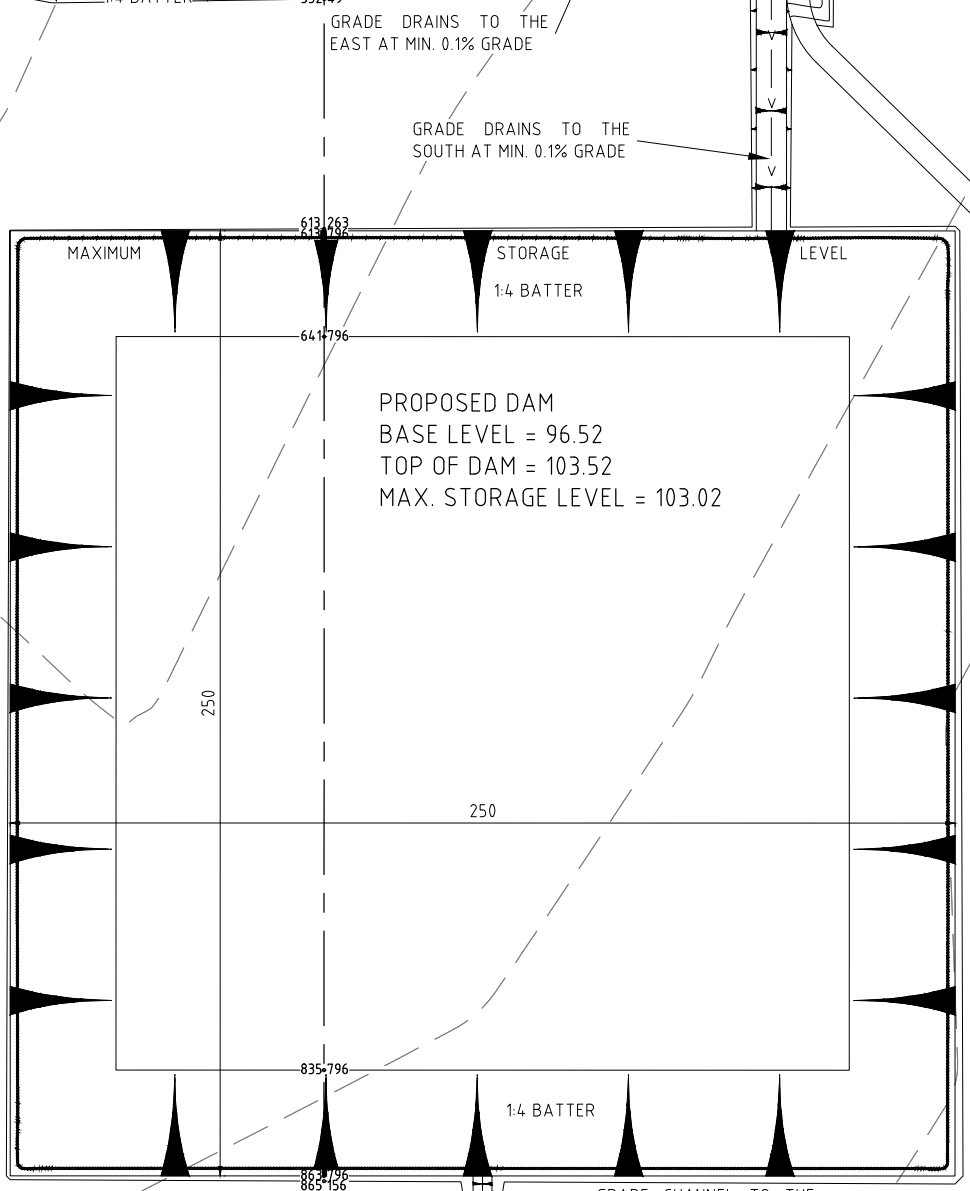
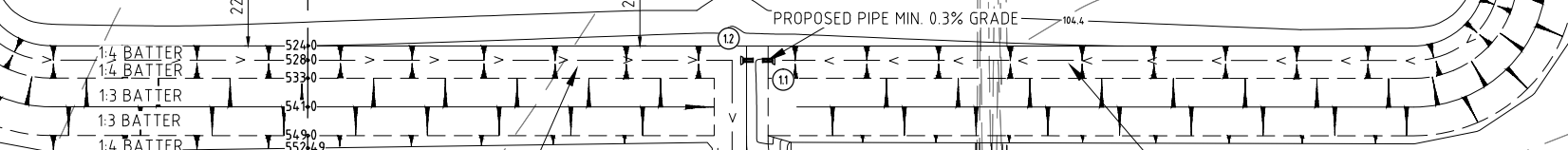
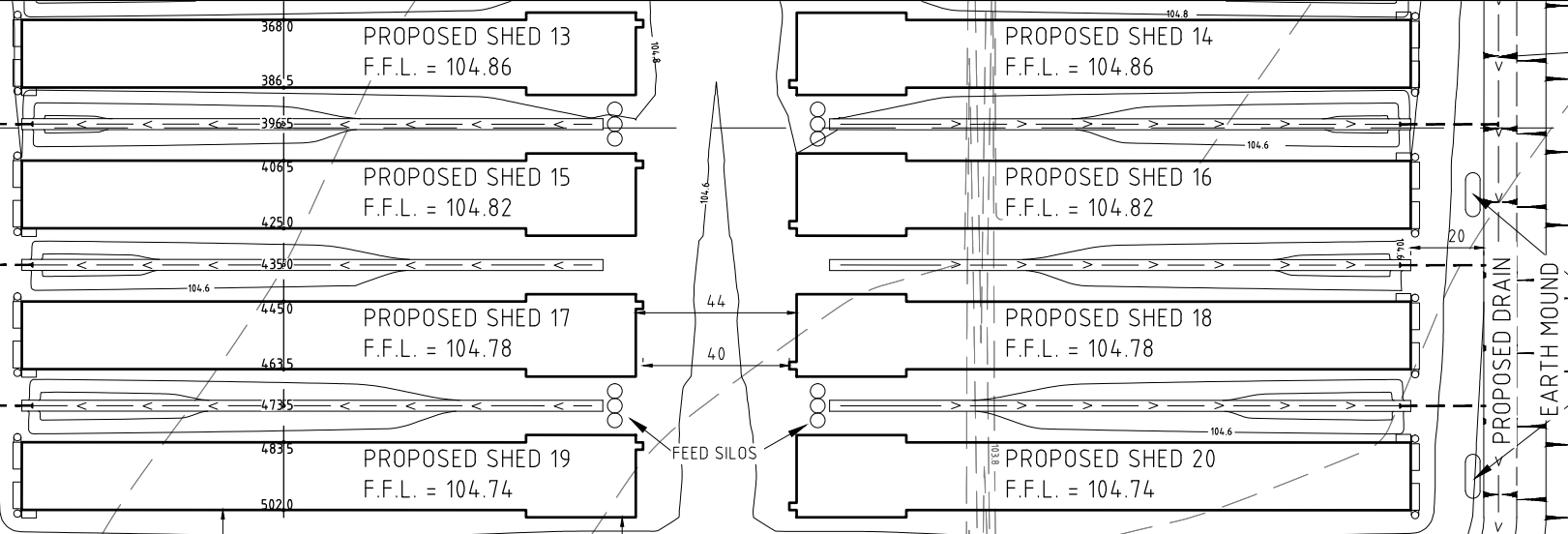
GRADE DRAINS TO THE SOUTH AT MIN. 0.1% GRADE

ACCESS

OF

RIGHT

PROPOSED



EXISTING DISH DRAIN TO BE ABANDONED

PROPOSED COMPOSTING FACILITY

EXISTING SUPPLY CHANNEL

PROPOSED CULVERT FOR RIGHT OF ACCESS

EXISTING SUPPLY CHANNEL TO BE ABANDONED

EXISTING DAM TO BE ABANDONED

INVERT RL 103.854

REV	DETAILS OF AMENDMENT	DESIGNED	DRAWN	CHECKED	APPROVED	DATE
C	Additional Reservoirs & Ventilation Stacks	DS	DS	CG*	BL*	29/11/17*
B	Farm 1 Removed	DS	DS	-	-	13/09/17*
A	Original Issue	DS	DS	-	-	13/10/16*

DETAIL PLAN 3 - SHEDS 13 TO 20 & DAM

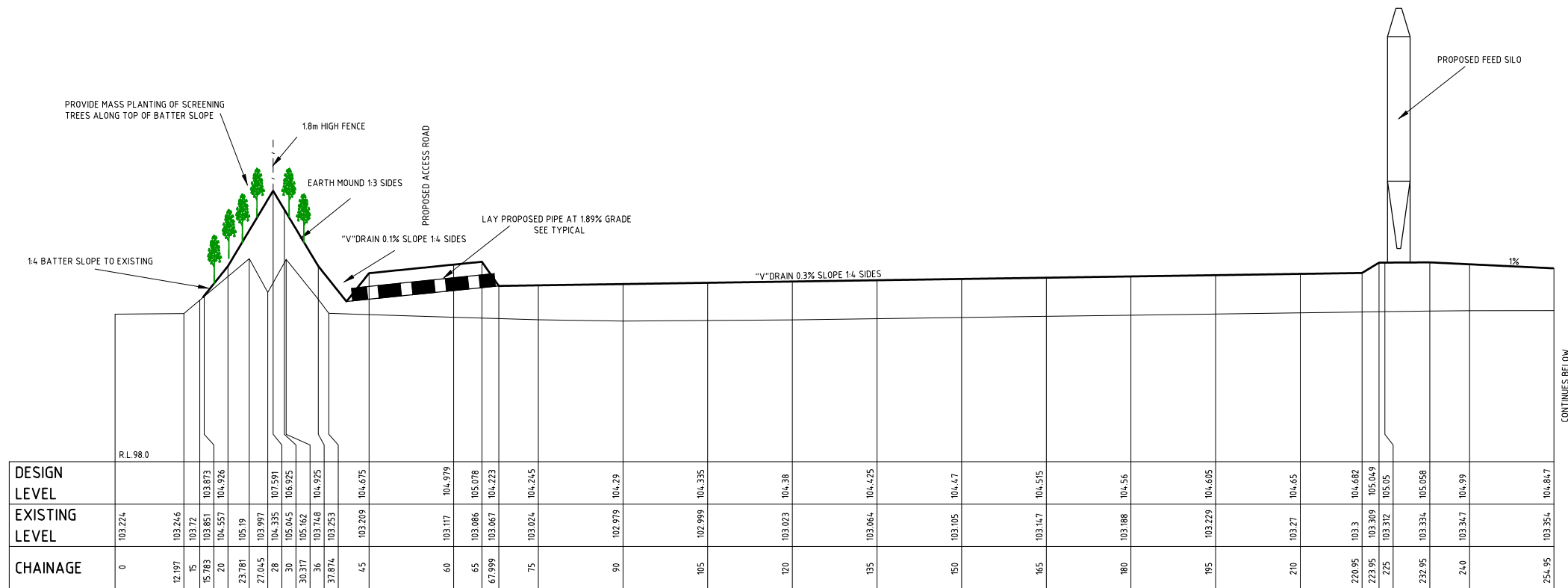
TATTERSALL LANDER Pty Ltd
DEVELOPMENT CONSULTANTS

SCALE: 1:2000 (or A3 Size Plot)

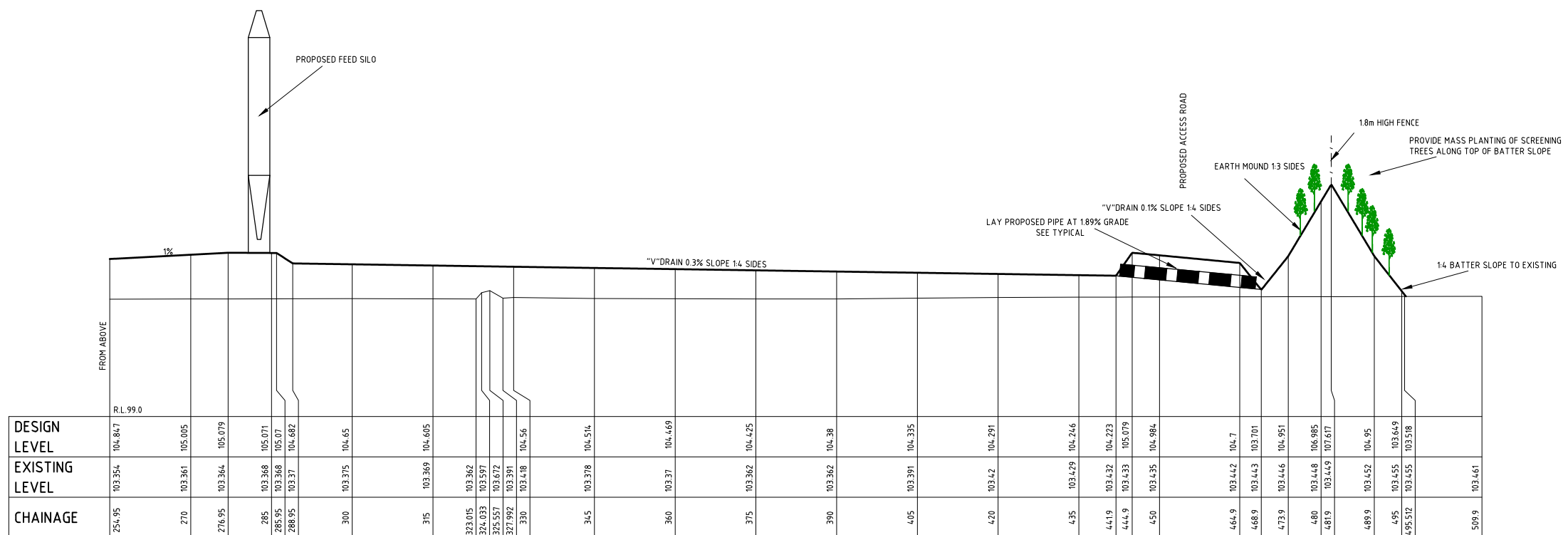
SHEET No. : 6	FILE : 21600087	SHEET SIZE: A3
JOB No. : 215474	DATE : Plotted 10/28 29/11/17	

COMPUTER FILE : S:\Clients\2015\215474\Drawings\215474 Array 2 Design.dwg

* Denote the original signature and date when revision was issued.



SECTION A
H=1:1000 V=1:200



SECTION A
H=1:1000 V=1:200

REV	DETAILS OF AMENDMENT	DESIGNED	DRAWN	CHECKED	APPROVED	DATE
B	Feed Silos Added	DS	DS	CG*	BL*	29/11/17*
A	Original Issue	DS	DS	-	-	13/09/17*

SITE CROSS SECTION- FARM 2 SECTION A

TATTERSALL LANDER Pty Ltd
DEVELOPMENT CONSULTANTS

SCALE : AS SHOWN

SHEET No. : 7

FILE : 21600088

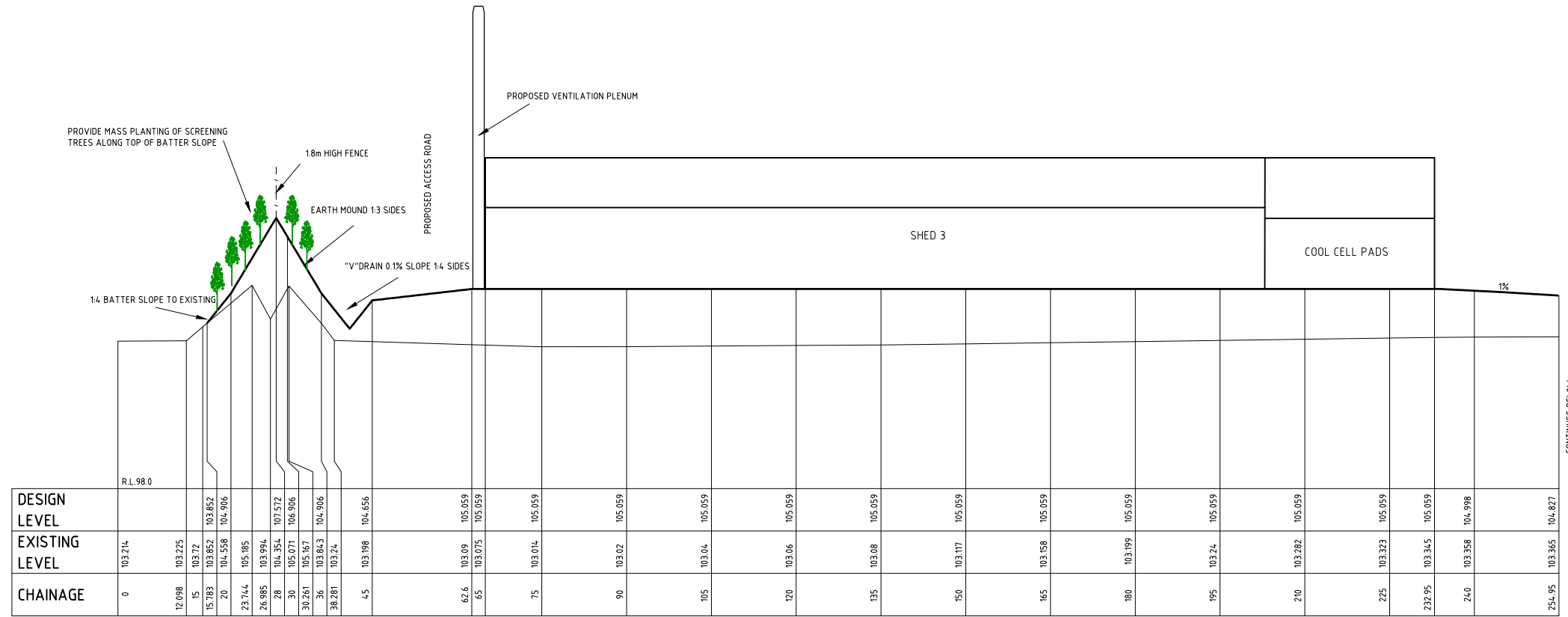
JOB No. : 215474

DATE : Plotted 10:28 29/11/17

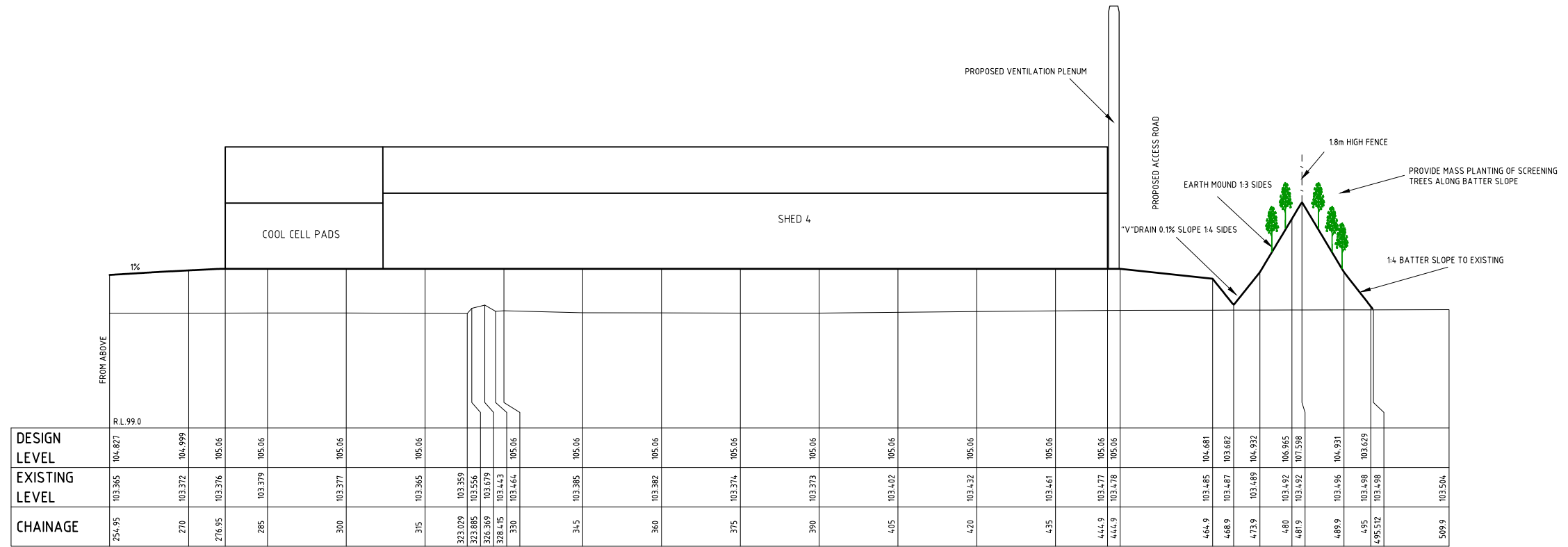
COMPUTER FILE : S:\Clients\2015\215474\DWG\215474 Array 2 Design.dwg

SHEET SIZE: A3

* Denote the original signature and date when revision was issued.



SECTION B
H=1:1000 V=1:200



SECTION B
H=1:1000 V=1:200

REV	DETAILS OF AMENDMENT	DESIGNED	DRAWN	CHECKED	APPROVED	DATE
B	Ventilation Stacks Added	DS	DS	CG*	BL*	29/11/17*
A	Original Issue	DS	DS	-	-	13/09/17*

* Denote the original signature and date when revision was issued.

SITE CROSS SECTION- FARM 2 SECTION B

TATTERSALL LANDER Py Ltd DEVELOPMENT CONSULTANTS	SCALE : AS SHOWN	SHEET No. : 8	FILE : 21600089	SHEET SIZE A3
	COMPUTER FILE : S:\Clients\2015\215474\0\215474 Array 2 Design.dwg	JOB No. : 215474	DATE : Plotted 10/29/29/11/17	



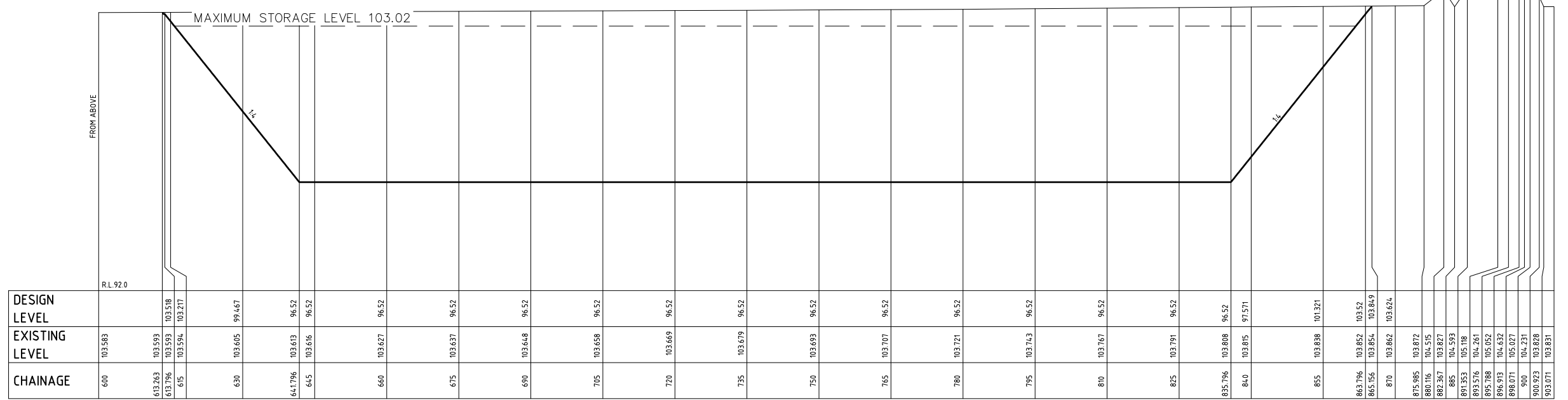
CHAINAGE	EXISTING LEVEL	DESIGN LEVEL
0	103.121	103.121
15	103.11	103.11
23.724	103.103	103.103
29.992	103.099	105.018
45	103.088	105.019
60	103.077	105.019
75	103.066	105.019
79.993	103.062	105.019
84.993	103.059	103.816
89.993	103.058	105.064
97.993	103.067	107.731
105	103.075	105.396
106	103.076	105.063
111	103.082	103.813
115	103.086	104.815
120	103.092	104.896
135	103.095	105.088
137	103.072	105.1
150	103.059	105.1
155.5	103.063	105.1
164	103.068	104.803
165	103.068	104.553
165.5	103.069	104.431
167	103.069	104.804
175.5	103.074	105.06
180	103.077	105.06
194	103.102	105.06
195	103.104	105.06
202.5	103.12	104.763
204	103.123	104.391
205.5	103.127	104.764
210	103.136	104.861
214	103.145	105.02
225	103.168	105.02
232.5	103.185	105.02
240	103.201	104.745
241	103.203	104.73
242.5	103.206	104.358
244	103.209	104.732
252.5	103.228	104.98
255	103.233	104.98
270	103.265	104.98
271	103.267	104.98
279.5	103.286	104.683
281	103.289	104.311
282.5	103.292	104.684
285	103.298	104.706
291	103.305	104.94
300	103.314	104.94
309.5	103.323	104.94
315	103.329	104.688

SECTION C
H=1:1000 V=1:200



CHAINAGE	EXISTING LEVEL	DESIGN LEVEL
315	103.329	104.688
318	103.332	104.643
319.5	103.333	104.271
321	103.335	104.644
329.5	103.343	104.9
330	103.344	104.9
345	103.356	104.9
348	103.358	104.9
356.5	103.364	104.603
358	103.365	104.231
359.5	103.366	104.604
360	103.366	104.609
366	103.372	104.86
375	103.377	104.86
386.5	103.385	104.86
390	103.387	104.715
395	103.391	104.563
396.5	103.392	104.191
398	103.393	104.564
405	103.397	104.795
406.5	103.398	104.82
420	103.408	104.82
425	103.411	104.82
433.5	103.417	104.523
435	103.418	104.151
436.5	103.42	104.524
445	103.428	104.78
450	103.433	104.78
463.5	103.446	104.78
465	103.448	104.752
472	103.455	104.483
473.5	103.456	104.111
475	103.458	104.484
480	103.463	104.608
483.5	103.466	104.74
495	103.478	104.74
502	103.486	104.74
510	103.494	104.6
524	103.509	104.225
525	103.51	103.975
528	103.513	103.226
533	103.518	104.479
540	103.526	106.813
541	103.527	107.142
549	103.535	104.476
552.49	103.539	103.526
555	103.541	
570	103.557	
585	103.572	
600	103.583	

SECTION C
H=1:1000 V=1:200



CHAINAGE	EXISTING LEVEL	DESIGN LEVEL
600	103.583	103.583
612.263	103.593	103.518
615.796	103.593	103.518
615	103.594	103.217
630	103.605	99.467
641.796	103.613	96.52
645	103.616	96.52
660	103.627	96.52
675	103.637	96.52
690	103.648	96.52
705	103.658	96.52
720	103.669	96.52
735	103.679	96.52
750	103.693	96.52
765	103.707	96.52
780	103.721	96.52
795	103.743	96.52
810	103.761	96.52
825	103.791	96.52
835.796	103.808	96.52
840	103.815	97.571
855	103.838	101.321
863.796	103.852	103.52
865.156	103.854	103.849
870	103.862	103.624
875.985	103.872	
880.116	104.515	
882.367	103.827	
885	104.593	
891.353	105.18	
893.576	104.261	
895.788	105.052	
896.913	104.432	
898.071	105.027	
900	104.231	
900.923	103.828	
903.071	103.831	

SECTION C
H=1:1000 V=1:200

SITE CROSS SECTION- FARM 2 SECTION C

REV	DETAILS OF AMENDMENT	DESIGNED	DRAWN	CHECKED	APPROVED	DATE
B	Converted to AHD	DS	DS	CG*	BL*	29/11/17*
A	Original Issue	DS	DS			31/10/17*

TATTERSALL LANDER Pty Ltd
REVELOPMENT CONSULTANTS

SCALE : AS SHOWN

SHEET No. : 9

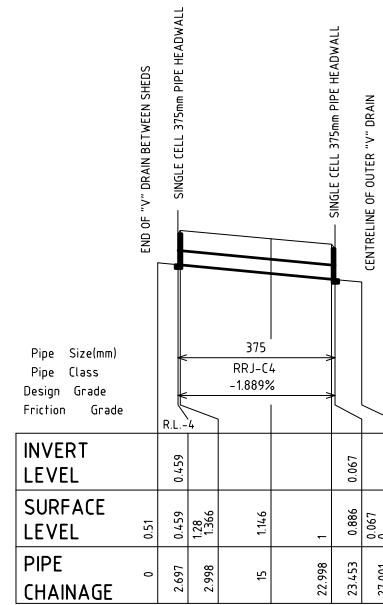
FILE : 21600090

DATE : Plotted 10:29 29/11/17

COMPUTER FILE : S:\Clients\2015\215474\DWG\215474 Array 2 Design.dwg

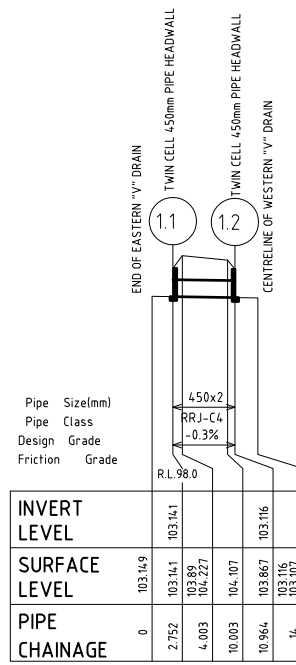
CONTINUES BELOW

CONTINUES BELOW



TYPICAL STORMWATER PIPE FROM SHEDS TO OUTER DRAIN

H=11000 V=1200



LINE.1

H=11000 V=1200

REV	DETAILS OF AMENDMENT	DESIGNED	DRAWN	CHECKED	APPROVED	DATE
B	Converted to AHD. Optimised Pipe Sizing	DS	DS	CG*	BL*	29/11/17*
A	Original Issue	DS	DS	-	-	31/10/17*

STORMWATER LONGITUDINAL SECTIONS

TATTERSALL LANDER Pty Ltd
DEVELOPMENT CONSULTANTS

SCALE : AS SHOWN

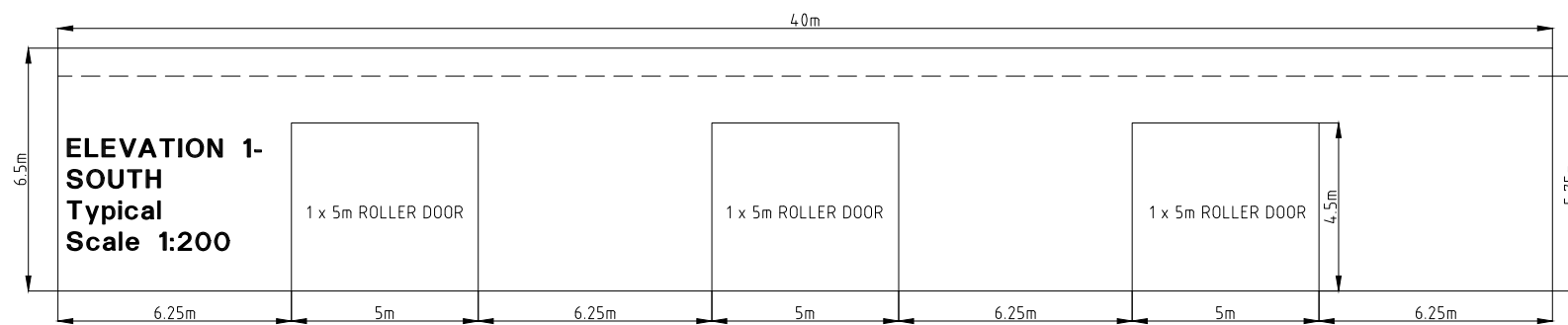
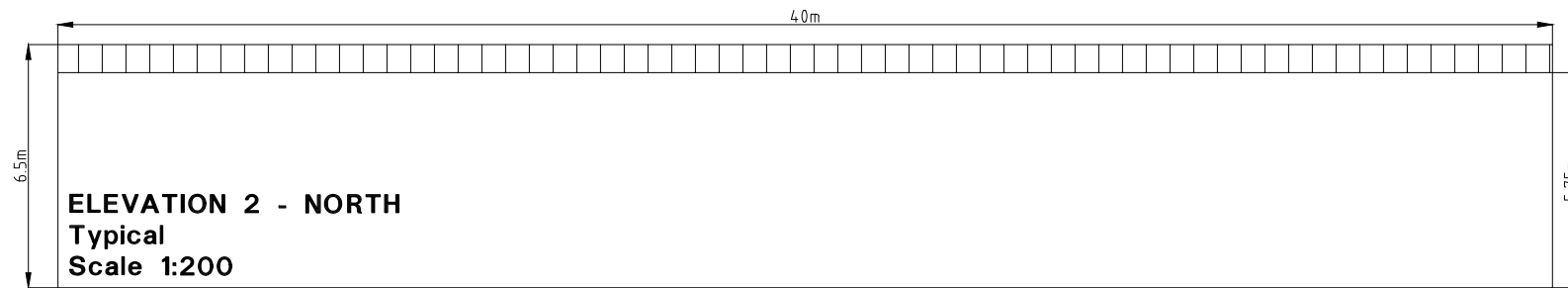
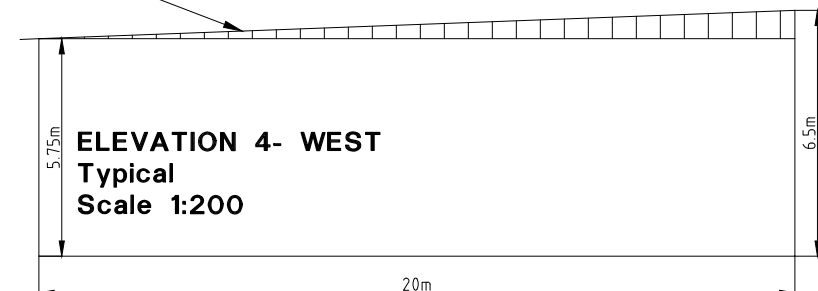
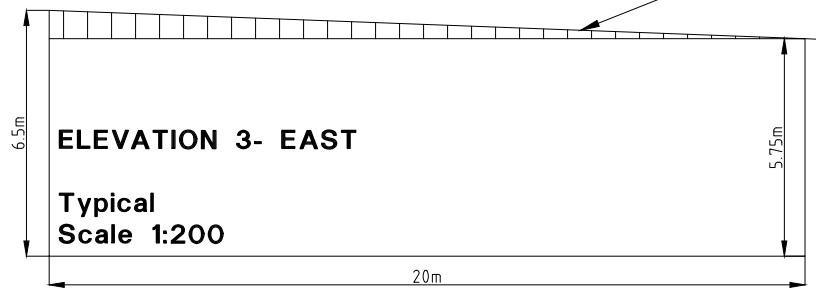
SHEET No. :10
JOB No. : 215474
DATE : Plotted 10/29/29/11/17

FILE : 21600386
DATE : 31/10/17
A3

COMPUTER FILE : S:\Clients\2015\215474\Drawings\215474 Array 2 Design.dwg

* Denote the original signature and date when revision was issued.

SKILLION ROOF TO
ENGINEERS SPECIFICATIONS



ELEVATION 2
↓
40m



PLAN
Typical
Scale 1:200

ELEVATION 1
↑

**PROPOSED MACHINERY & SUPPLY
SHEDS - TYPICAL SHED DETAILS**

REV	DETAILS OF AMENDMENT	DESIGNED	DRAWN	CHECKED	APPROVED	DATE
A	Original Issue	DS	DS	CS*	BL*	29/11/17*

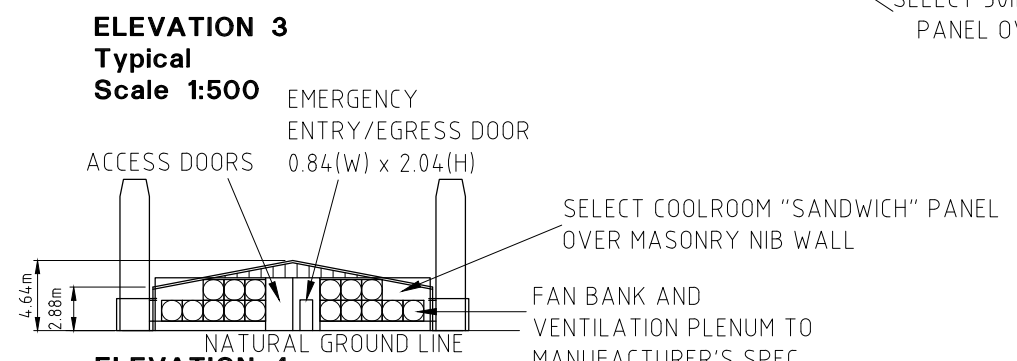
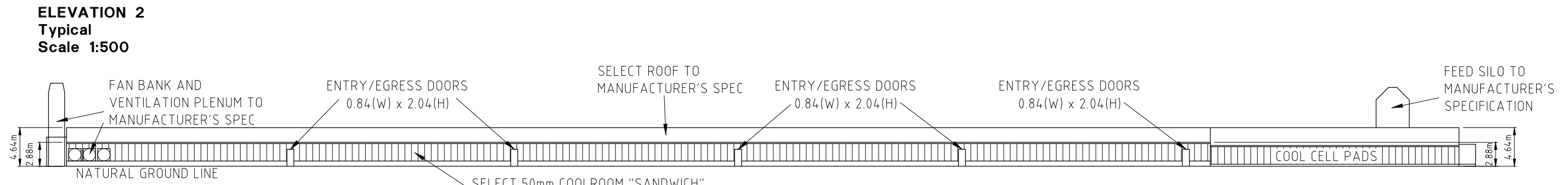
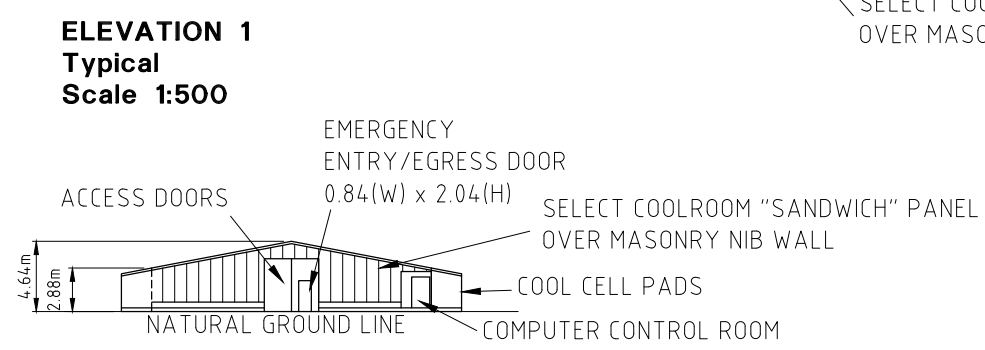
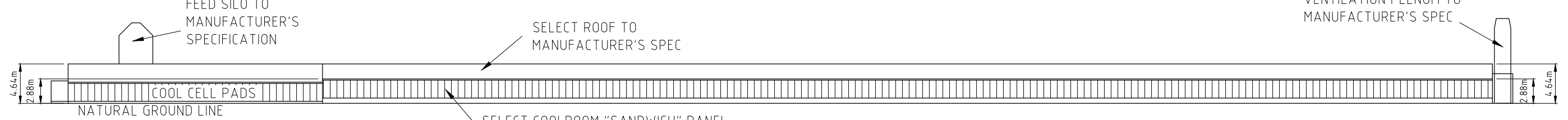
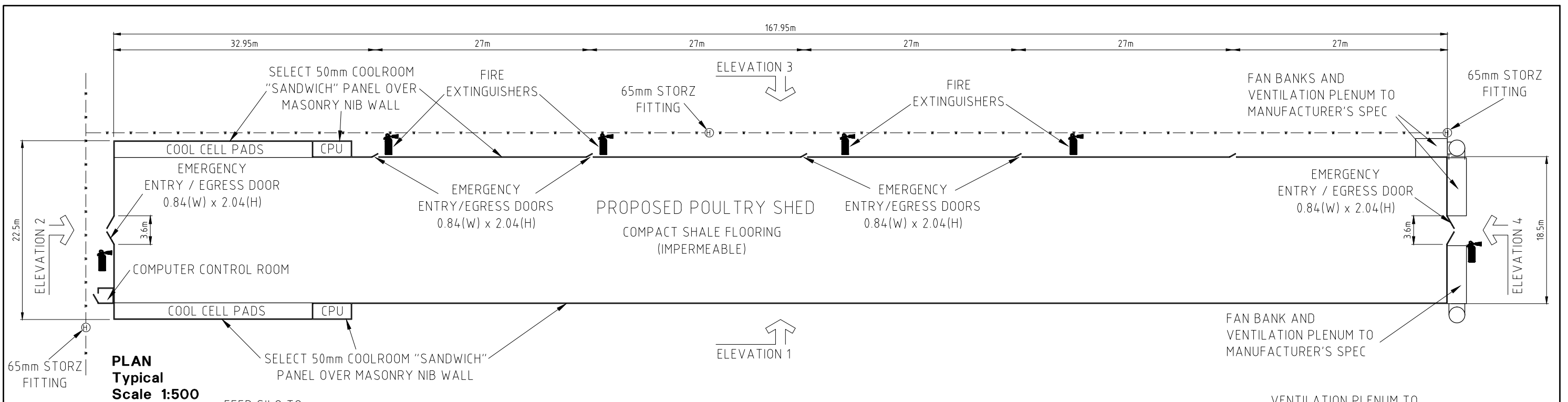
**TATTERSALL
LANDER** Pty Ltd
DEVELOPMENT CONSULTANTS



SCALE : AS SHOWN	SHEET No. :11	FILE : 21600091	SHEET SIZE A3
	JOB No. : 215474	DATE : Plotted 10:29 29/11/17	

COMPUTER FILE : S:\Clients\2015\215474\Drawings\215474 Array 2 Design.dwg

* Denote the original signature and date when revision was issued.



**PROPOSED POULTRY SHEDS-
TYPICAL SHED DETAILS**

REV	DETAILS OF AMENDMENT	DESIGNED	DRAWN	CHECKED	APPROVED	DATE
B	Ventilation Stack Details Added	DS	DS	CG*	BL*	29/11/17*
A	Original Issue	DS	DS	-	-	13/09/17*

TATTERSALL LANDER Pty Ltd
DEVELOPMENT CONSULTANTS

SCALE : AS SHOWN

SHEET No. :12

FILE : 21600092

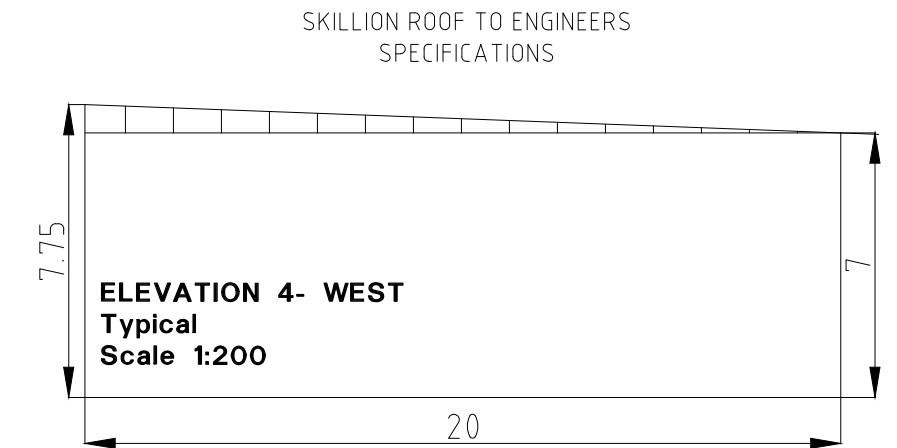
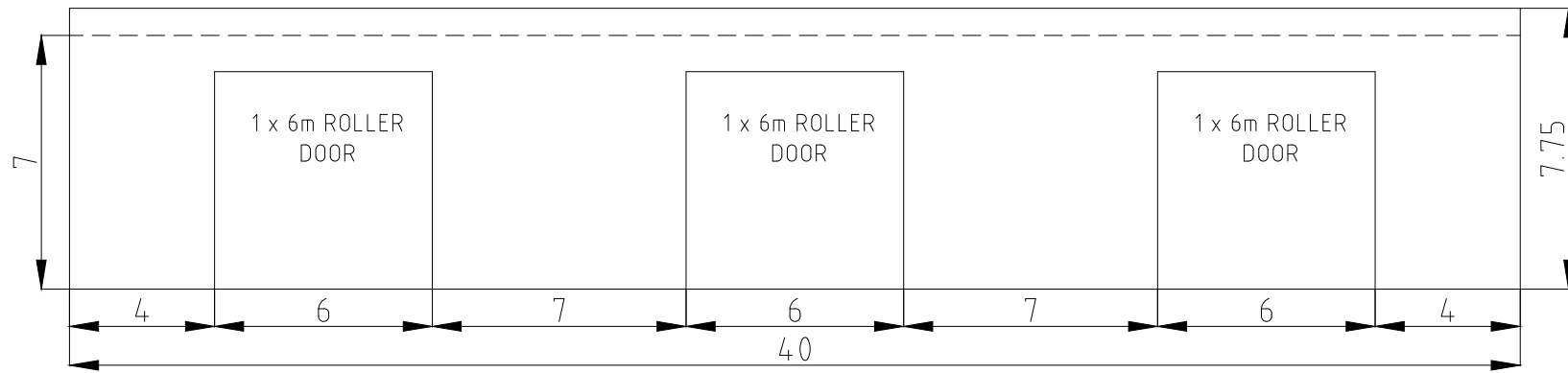
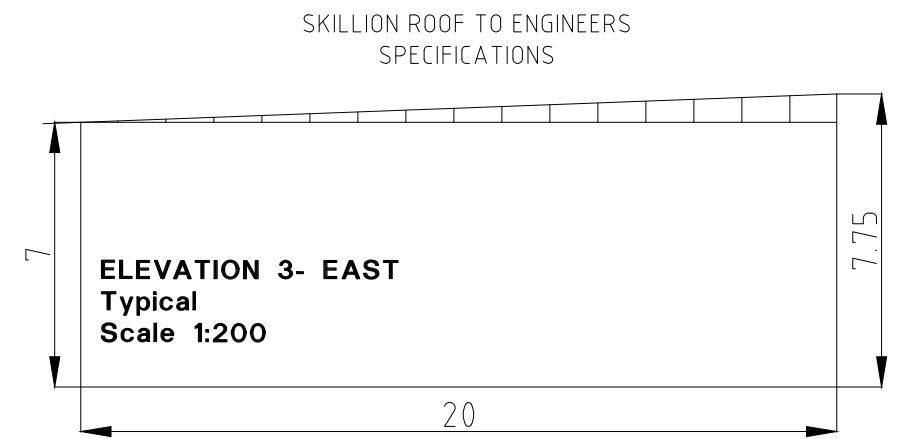
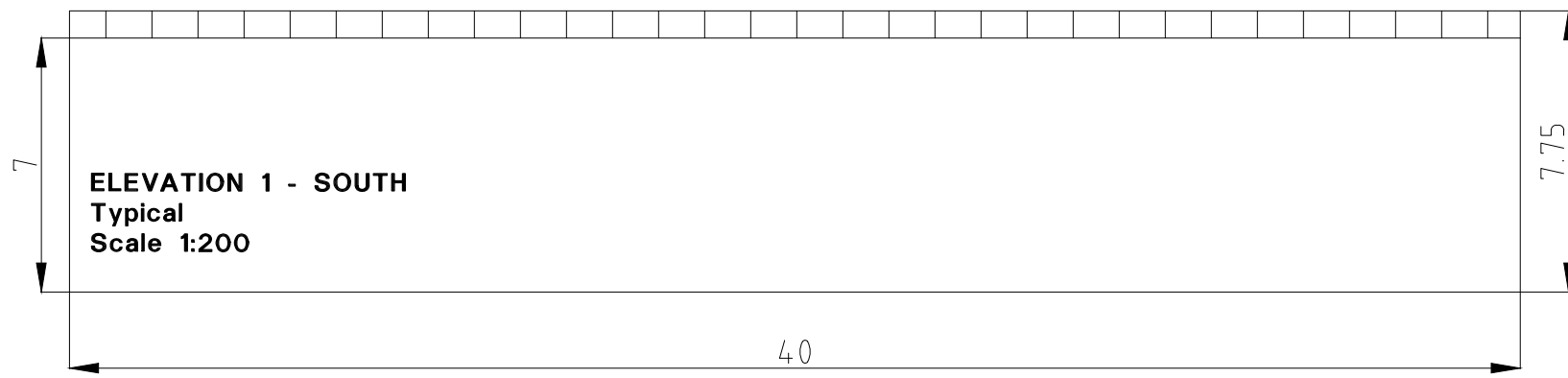
JOB No. : 215474

DATE : Plotted 10:30 29/11/17

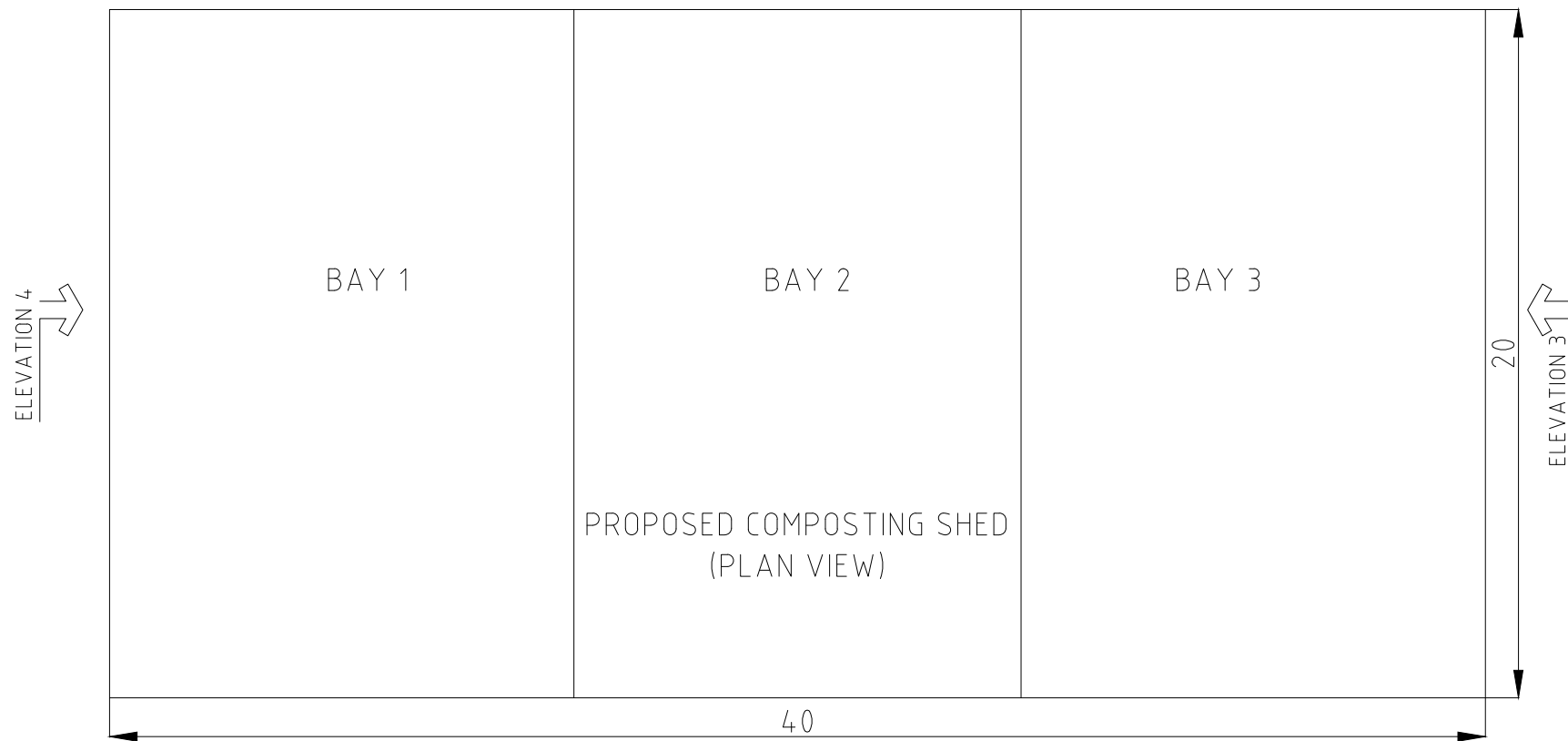
SHEET SIZE A3

COMPUTER FILE : S:\Clients\2015\215474\Drawg\215474 Array 2 Design.dwg

* Denote the original signature and date when revision was issued.



ELEVATION 2
↓



PLAN
Typical
Scale 1:200

NOTE:
CLADDING TO BE COLOUR
BONDED METAL OF
NEUTRAL COLOUR

PROPOSED COMPOSTING SHED - TYPICAL SHED DETAILS

REV	DETAILS OF AMENDMENT	DESIGNED	DRAWN	CHECKED	APPROVED	DATE
A	Original Issue	DS	DS	CG*	BL*	29/11/17*

TATTERSALL LANDER Pty Ltd
DEVELOPMENT CONSULTANTS



SCALE : AS SHOWN	SHEET No. :13	FILE : 21600439	SHEET SIZE
COMPUTER FILE : S:\Clients\2015\215474\Drawings\215474 Array 2 Design.dwg	JOB No. : 215474	DATE : Plotted 10:30 29/11/17	A3

* Denote the original signature and date when revision was issued.