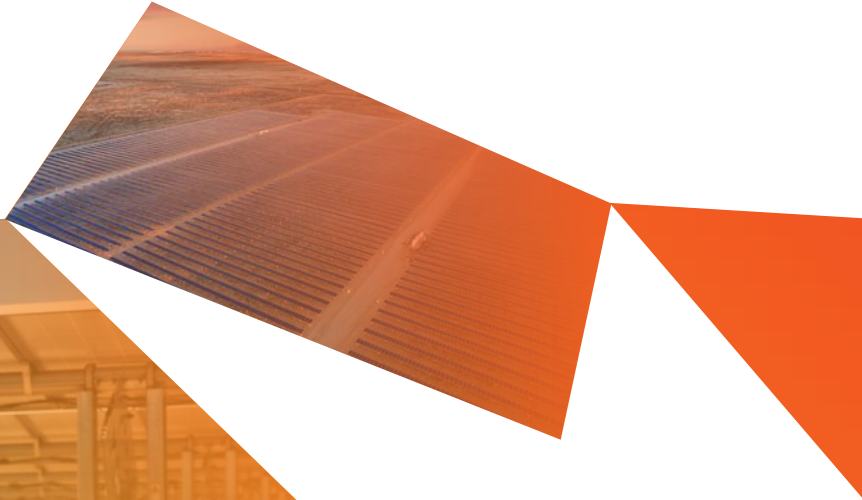


Appendix G

Noise and vibration impact assessment

Limondale Sun Farm





Limondale Sun Farm

Noise and vibration assessment

Prepared for Overland Sun Farming Pty Ltd | 23 March 2017



Limondale Sun Farm

Noise and vibration assessment

Prepared for Overland Sun Farming Pty Ltd | 23 March 2017

Level 5, 21 Bolton Street
Newcastle NSW 2300

T +61 (0)2 4927 0506

F +61 (0)2 4926 1312

E info@emmconsulting.com.au

www.emmconsulting.com.au

Limondale Sun Farm

Final

Report J16155RP1 | Prepared for Overland Sun Farming Pty Ltd | 23 March 2017

Prepared by **Teanuanua Villierme**

Approved by **Najah Ishac**

Position Acoustic Consultant

Position Director

Signature



Signature



Date 23 March 2017

Date 23 March 2017

This report has been prepared in accordance with the brief provided by the client and has relied upon the information collected at the time and under the conditions specified in the report. All findings, conclusions or recommendations contained in the report are based on the aforementioned circumstances. The report is for the use of the client and no responsibility will be taken for its use by other parties. The client may, at its discretion, use the report to inform regulators and the public.

© Reproduction of this report for educational or other non-commercial purposes is authorised without prior written permission from EMM provided the source is fully acknowledged. Reproduction of this report for resale or other commercial purposes is prohibited without EMM's prior written permission.

Document Control

Version	Date	Prepared by	Reviewed by
V1	13/2/17	Teanuanua Villierme	Najah Ishac
V2	14/3/17	David Richards	Kate Cox



T +61 (0)2 4927 0506 | F +61 (0)2 4926 1312

Level 5 | 21 Bolton Street | Newcastle | New South Wales | 2300 | Australia

www.emmconsulting.com.au

Table of contents

Chapter 1	Introduction	1
1.1	Overview	1
1.2	Assessment guidelines and requirements	1
Chapter 2	Project and site description	3
2.1	Project description	3
2.2	Site description	3
Chapter 3	Existing environment	5
3.1	Noise sensitive receivers	5
3.2	Acoustic environment	5
Chapter 4	Construction noise guidelines	7
4.1	Objectives	7
4.2	Interim construction noise guideline	7
4.3	Road traffic noise	9
Chapter 5	Construction vibration criteria	11
5.1	Human comfort – Assessing vibration a technical guideline	11
5.1.1	Continuous vibration	11
5.1.2	Intermittent vibration	12
5.2	Structural vibration criteria – DIN 4150	13
5.3	Ground-borne noise	14
Chapter 6	Noise assessment	15
6.1	Noise modelling methodology	15
6.2	Construction plant and equipment	15
6.3	Modelled meteorological conditions	17
6.4	Construction noise modelling results	17
6.5	Road traffic noise during construction	18
6.6	Cumulative construction noise	19
Chapter 7	Construction vibration assessment	21
Chapter 8	Operational noise	23
Chapter 9	Conclusion	25
References		27

Appendices

A Acoustic terms

Tables

1.1	Relevant SEAR	2
3.1	Noise assessment locations	5
4.1	ICNG residential NMLs	8
4.2	Construction NMLs	8
4.3	Road traffic noise assessment criteria for residential land uses	9
5.1	Examples of types of vibration	11
5.2	Criteria for exposure to continuous vibration	11
5.3	Acceptable vibration dose values (VDV) for intermittent vibration (m/s 1.75)	12
5.4	Structural damage guideline values of vibration velocity – DIN 4150	13
6.1	Typical construction plant and equipment	16
6.2	Meteorological conditions considered in noise modelling	17
6.3	Construction (site preparation) noise predictions	17
6.4	Daily average traffic movements during construction	18
6.5	Predicted road traffic noise during construction	19
7.1	Recommended safe working distances for vibration intensive plant	21
A.1	Glossary of acoustic terms	A.3
A.2	Perceived change in noise	A.3

Figures

2.1	Site boundary and development footprint	4
3.1	Noise assessment locations	6
5.1	DIN 4150 Structural vibration safe limits for buildings	14

1 Introduction

1.1 Overview

OVERLAND Sun Farming Pty Ltd (OVERLAND) proposes to develop the Limondale Sun Farm, a large-scale solar photovoltaic (PV) generation facility and associated infrastructure in the Murray Darling Depression bioregion of south-western NSW (the project). OVERLAND proposes to develop the project on a site within the Balranald local government area (LGA), approximately 14 kilometres (km) south of the township of Balranald.

The project is a State significant development (SSD) under the State Environmental Planning Policy (State and Regional Development) 2011 (SRD SEPP). A development application (DA) for the project is required to be submitted under Part 4, Division 4.1 of the NSW *Environmental Planning and Assessment Act 1979* (EP&A Act). The NSW Minister for Planning, or the Minister's delegate, is the consent authority.

An environmental impact statement (EIS) is a requirement of the approval process. This noise and vibration impact assessment (NVIA) report forms part of the EIS. It documents the NVIA methods and results, the initiatives built into the project design to avoid and minimise noise and vibration associated impacts, and the additional mitigation and management measures proposed to address any residual impacts not able to be avoided.

1.2 Assessment guidelines and requirements

This NVIA has been prepared in accordance with the relevant governmental assessment requirements, guidelines and policies, and in consultation with the relevant government agencies.

The NVIA was prepared with reference to the methods outlined in:

- NSW Department of Environment and Climate Change (DECC) 2009, *Interim Construction Noise Guideline* (ICNG);
- NSW Environment Protection Authority (EPA) 2000, *NSW Industrial Noise Policy* (INP);
- NSW Department of Environment Climate Change and Water (DECCW) 2011, *Road Noise Policy* (RNP);
- NSW Department of Environment and Conservation (DEC) 2006, *Assessing Vibration: a technical guideline*; and
- Australian Standard AS 2436-2010 *Guide to Noise and Vibration Control on Construction, Maintenance and Demolition Sites*.

The NVIA was prepared in accordance with the requirements of the NSW Department of Planning and Environment (DP&E). These were set out in the Secretary's Environmental Assessment Requirements (SEARs) for the project, issued on 4 November 2016. The SEARs identify matters which must be addressed in the EIS. A copy of the SEARs is attached to the EIS as Appendix A, while Table 1.1 lists the individual requirements relevant to this NVIA and where they are addressed in this report.

Table 1.1 **Relevant SEAR**

Requirement	Section addressed
DP&E	
Construction noise impacts in accordance with the ICNG	6.4
Construction road traffic noise impact	6.5
Cumulative construction noise impact	6.6
Cumulative traffic noise impact	6.6

To inform preparation of the SEARs, DP&E invited other government agencies to recommend matters to be addressed in the EIS. These matters were taken into account by the Secretary for DP&E when preparing the SEARs. Copies of the government agencies' advice to DP&E were attached to the SEARs. However no additional matters were recommended in regards to noise and vibration.

Several technical terms are required for the discussion of noise and vibration. These are explained in Appendix A.

2 Project and site description

2.1 Project description

The project comprises a large-scale solar photovoltaic (PV) generation facility and associated infrastructure on the site. The project will connect to Transgrid's Balranald Substation, approximately 500 m from the site boundary.

The project comprises the following key components:

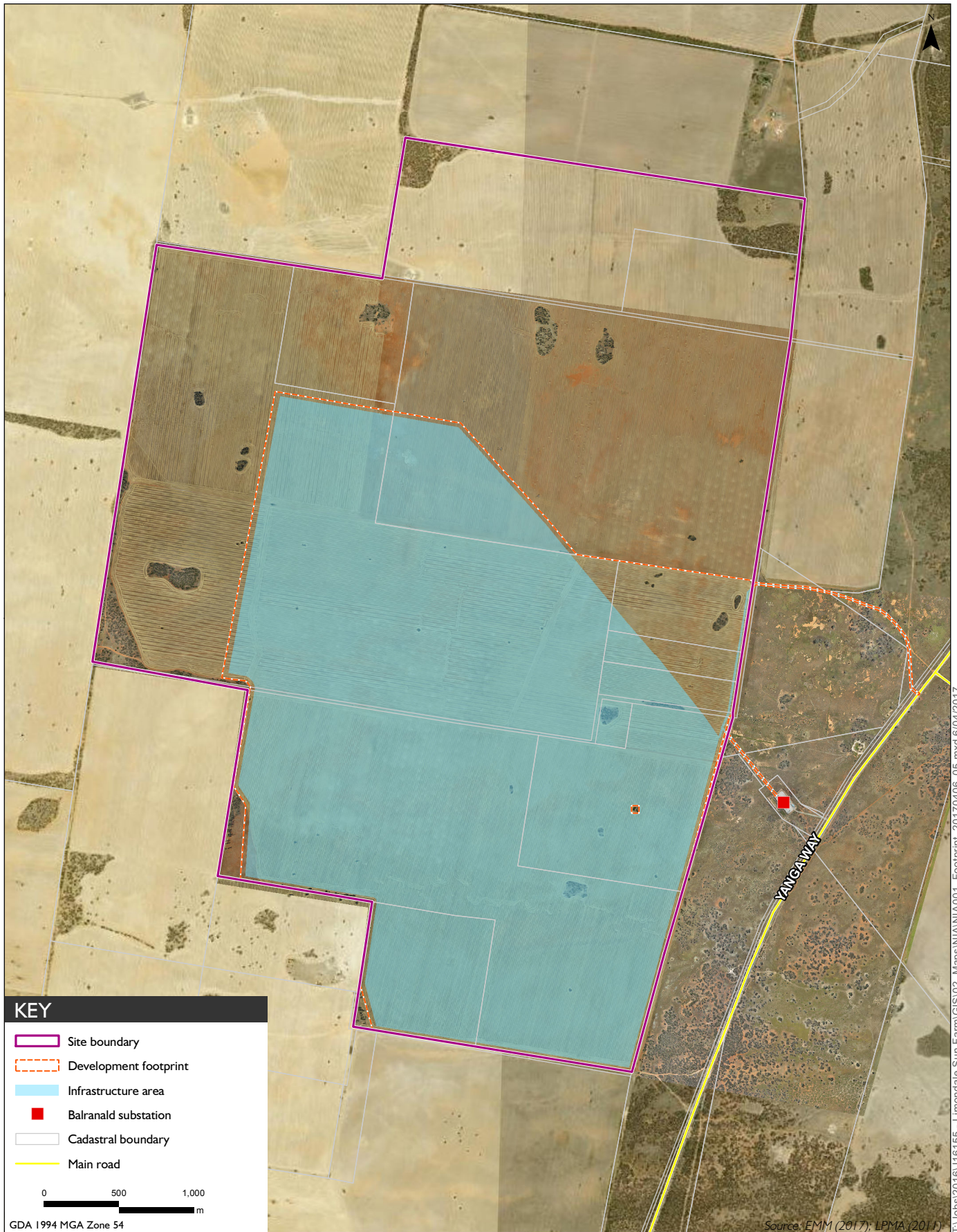
- a network of PV solar panel arrays;
- electrical collection systems, switchyard and control room;
- a management hub, including demountable offices and amenities and equipment sheds;
- parking and internal access roads; and
- easement and connection infrastructure to the Balranald Substation.

The proposed hours of construction activities are Monday to Friday between 7 am to 6 pm and Saturday between 8 am and 1 pm. No work will occur on Sundays or public holidays. It is important to note that these proposed construction hours are consistent with the ICNG recommended standard hours.

The expected total duration of the proposed constructions is estimated to be approximately 12 months.

2.2 Site description

The site is to the west of Yanga Way, 14 km south of the township of Balranald, and within the Balranald Shire Local Government Area (LGA). The site has previously been disturbed through land clearing, cropping and livestock grazing. The development footprint within the site boundary has been refined on the basis of grid connection studies, environmental constraints identification and design of project infrastructure with the objective of developing an efficient project that avoids and minimises environmental impacts. The site boundary, development footprint and infrastructure area are shown on Figure 2.1.



T:\Jobs\2016\16155 - Limondale Sun Farm\GIS\02_Maps\N\N\IA001_Footprint_2017\0406_05.mxd 6/04/2017

Site boundary and development footprint
 Limondale Sun Farm
 Construction noise and vibration impact assessment
 Figure 2.1

3 Existing environment

3.1 Noise sensitive receivers

The nearest sensitive receptors are dwellings. The nearest, R1, is approximately 2.9 km north of the development footprint, with a further five receptors, R2, R3, R4, R5 and R6, within approximately 6 km (see Figure 3.1). Noise has been assessed at these sensitive receivers (referred to herein as assessment locations) to quantify potential construction noise levels from the project. No other sensitive land uses have been identified around the project that warrant assessment. The assessment locations are presented in Table 3.1 and Figure 3.1.

Table 3.1 Noise assessment locations

Location ID	Land use ¹	Approximate distance from development footprint (km)
R1	Residential	2.9
R2	Residential	6.3
R3	Residential	6.4
R4	Residential	3.5
R5	Residential	3
R6	Residential	4.7

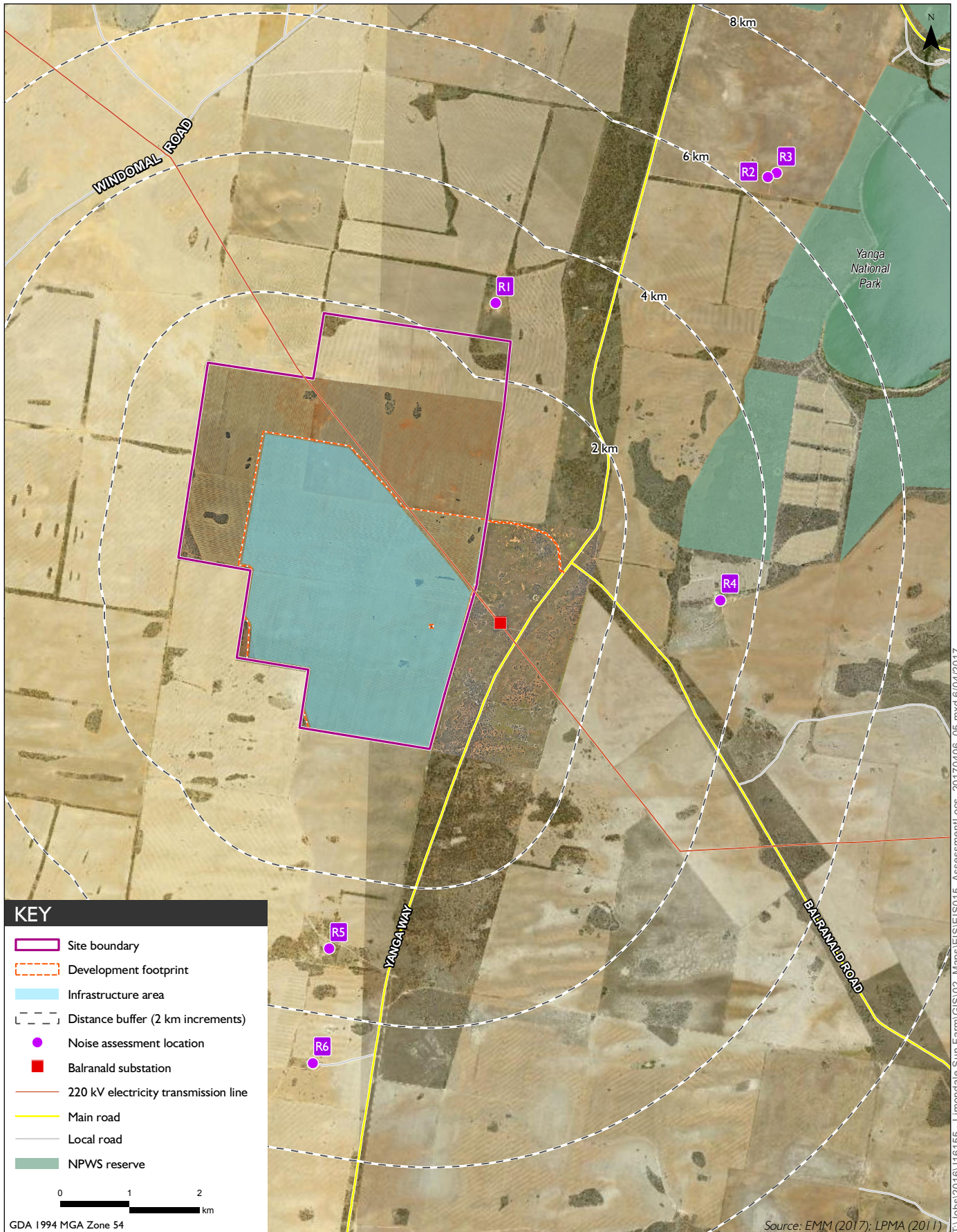
Notes: 1. As defined in the NSW INP and NSW ICNG.

3.2 Acoustic environment

Given the area and surrounding agricultural land uses, existing ambient noise levels at assessment locations are likely to be dominated by rural noise sources and road traffic noise. The rating background noise levels (RBLs) are expected to be low (30 dB or below) and therefore the INP minimum RBL of 30 dB has been adopted for this assessment for the recommended standard construction hours in accordance with the ICNG (DECC 2009).

As described in Chapter 1, the project would adopt the recommended standard construction hours as per the ICNG (DECC 2009) which are Monday to Friday 7 am to 6 pm, Saturday 8 am to 1 pm with no construction work on Sundays or public holidays.

The adopted RBL for all assessment locations is 30 dB(A).



Noise assessment locations

Limondale Sun Farm
Construction noise and vibration impact assessment

Figure 3.1

4 Construction noise guidelines

4.1 Objectives

Construction noise objectives aim to minimise the noise impacts from construction activities on surrounding sensitive receivers. This section provides a summary of applicable noise objectives for the proposed activities.

These noise objectives were used to derive site specific construction noise management levels (NMLs) that assessed the potential noise levels from the proposed works and guided the requirements for mitigation or management thereof.

4.2 Interim construction noise guideline

The assessment and management of noise from construction works is completed using the ICNG (DECC 2009), which provides two methods for the assessment of construction noise emissions:

- Quantitative: suited to major construction projects with typical durations of more than three weeks; and
- Qualitative: suited to short term construction activity (less than three weeks).

The method for a quantitative assessment requires a more complex approach, involving noise emission predictions from construction activities to the nearest sensitive receivers, whilst the qualitative assessment methodology is a more simplified approach that relies more on noise management strategies.

Due to the anticipated duration of the proposed construction works (ie greater than three weeks), this study has adopted a quantitative assessment approach. The assessment includes quantification of potential noise impacts at receivers and provides construction noise criteria for activities that are proposed.

The ICNG recommends that where noise levels from construction during out of hours (OOH) periods are above the noise affected level (RBL + 5 dB) all feasible and reasonable mitigation should be adopted. The ICNG requires a strong justification for construction works outside of standard construction hours. However, no regular OOH construction works or deliveries are expected during the proposed construction works.

Table 4.1 is an extract from the ICNG and provides NMLs for residential receivers during and outside of standard construction hours.

Table 4.1 ICNG residential NMLs

Time of day	Management level L_{Aeq} (15 min)	How to apply
Recommended standard hours: Monday to Friday 7 am to 6pm Saturday 8 am to 1 pm No work on Sundays or public holidays.	Noise affected RBL + 10 dB.	<p>The noise affected level represents the point above which there may be some community reaction to noise:</p> <ul style="list-style-type: none"> Where the predicted or measured L_{Aeq} (15 min) is greater than the noise affected level, the proponent should apply all feasible and reasonable work practices to meet the noise affected level. The proponent should also inform all potentially impacted residents of the nature of works to be carried out, the expected noise levels and duration, as well as contact details.
	Highly noise affected 75 dB.	<p>The highly noise affected level represents the point above which there may be strong community reaction to noise:</p> <ul style="list-style-type: none"> Where noise is above this level, the relevant authority (consent, determining or regulatory) may require respite periods by restricting the hours that the very noisy activities can occur, taking into account: <ul style="list-style-type: none"> i) times identified by the community when they are less sensitive to noise (such as before and after school for works near schools, or mid-morning or mid-afternoon for works near residences; and ii) if the community is prepared to accept a longer period of construction in exchange for restrictions on construction times.
Outside recommended standard hours.	Noise affected RBL + 5 dB.	<ul style="list-style-type: none"> A strong justification would typically be required for works outside the recommended standard hours. The proponent should apply all feasible and reasonable work practices to meet the noise affected level. Where all feasible and reasonable practices have been applied and noise is more than 5 dB above the noise affected level, the proponent should negotiate with the community. For guidance on negotiating agreements see section 7.2.2.

The construction NMLs for this assessment have been based on the adopted INP minimum RBL of 30 dB in accordance with the ICNG (DECC 2009). The NMLs are shown in Table 4.2.

Table 4.2 Construction NMLs

Assessment locations	Period	Adopted RBL, dB(A)	NML, $L_{Aeq(15-min)}$ (RBL + 10 dB)
R1-R6	Standard hours ¹	30	40 75 (highly affected)

Notes: 1. Standard hours as per the ICNG are Monday to Friday from 7 am to 6 pm, Saturday from 8 am to 1 pm, no work on Sundays and public holidays.

4.3 Road traffic noise

The principle guidance for assessing the impact of road traffic noise on receivers is in the NSW EPA’s RNP (DECCW 2011).

It is anticipated that road trucks will deliver all equipment and material (eg posts, frames, cables, PV solar panels, inverters etc) to site. The site will be accessed from the eastern boundary via Yanga Way, with most originating from the south (along Yanga Way), and some from the north (Yanga Way from the Sturt Highway) of the access road.

The sections of the Sturt Highway and Yanga Way leading to the project are classified as a freeway and an arterial road, respectively. Table 4.3 presents the road noise assessment criteria for these road categories and are reproduced from Table 3 of the RNP (DECCW 2011). It should be noted that such criteria apply to permanent situations and is therefore conservative for the temporary nature of the construction activities.

Table 4.3 Road traffic noise assessment criteria for residential land uses

Road category	Type of project/development	Assessment criteria, dB(A)	
		Day (7 am to 10 pm)	Night (10 pm to 7 am)
Freeway/arterial/sub-arterial roads	Existing residences affected by additional traffic on existing freeway/arterial/sub-arterial roads generated by land use developments.	$L_{eq(15-hr)}$ 60 (external)	$L_{eq(9-hr)}$ 55 (external)

Additionally, the RNP states that where existing road traffic noise criteria are already exceeded, any additional increase in total traffic noise level should be limited to 2 dB, after consideration of all feasible and reasonable noise mitigation and management measures.

5 Construction vibration criteria

5.1 Human comfort – Assessing vibration a technical guideline

Environmental Noise Management – Assessing Vibration: a technical guideline (DEC 2006) is based on guidelines contained in *BS 6472 – 2008, Evaluation of human exposure to vibration in buildings (1-80Hz)*.

The guideline presents preferred and maximum vibration values for use in assessing human responses to vibration and provides recommendations for measurement and evaluation techniques. At vibration values below the preferred values, there is a low probability of adverse comment or disturbance to building occupants. Where all feasible and reasonable mitigation measures have been applied and vibration values are still beyond the maximum value, it is recommended the operator negotiate directly with the affected community.

The guideline defines three vibration types and provides direction for assessing and evaluating the applicable criteria. Table 2.1 of the guideline provides examples of the three vibration types and has been reproduced in Table 5.1.

Table 5.1 Examples of types of vibration

Continuous Vibration	Impulsive Vibration	Intermittent Vibration
Machinery, steady road traffic, continuous construction activity (such as tunnel boring machinery).	Infrequent: Activities that create up to 3 distinct vibration events in an assessment period, e.g. occasional dropping of heavy equipment, occasional loading and unloading.	Trains, intermittent nearby construction activity, passing heavy vehicles, forging machines, impact pile driving, jack hammers. Where the number of vibration events in an assessment period is three or fewer these would be assessed against impulsive vibration criteria.

The most relevant to the proposed construction activities are continuous and intermittent vibration and these are discussed further in the following sections.

5.1.1 Continuous vibration

Appendix B of the guideline outlines acceptable criteria for human exposure to continuous vibration (1 Hz to 80 Hz). The criteria are dependent on both the time of activity (usually daytime or night-time) and the occupied place being assessed. Table 5.2 reproduces the preferred and maximum criteria relating to measured peak velocity.

Table 5.2 Criteria for exposure to continuous vibration

Place	Time	Peak velocity (mm/s)	
		Preferred	Preferred
Critical working Areas (eg hospital operating theatres, precision laboratories)	Day or night-time	0.14	0.28
Residences	Day	0.28	0.56

Table 5.2 Criteria for exposure to continuous vibration

Place	Time	Peak velocity (mm/s)	
		Preferred	Preferred
Offices	Night-time	0.20	0.40
	Day or night-time	0.56	1.1

Notes: 1. RMS velocity (mm/s) and vibration velocity value (dB re 10⁻⁹ mm/s).
2. Values given for most critical frequency >8 Hz assuming sinusoidal motion.

5.1.2 Intermittent vibration

Intermittent vibration (as defined in Section 2.1 of the guideline) is assessed using the vibration dose concept which relates to vibration magnitude and exposure time.

Intermittent vibration is representative of activities such as impact hammering, rolling or general excavation work (eg an excavator tracking).

Section 2.4 of the guideline provides acceptable values for intermittent vibration in terms of vibration dose values (VDV) which requires the measurement of the overall weighted root mean square (RMS) acceleration levels over the frequency range 1 Hz to 80 Hz. To calculate VDV the following formula (refer section 2.4.1 of the guideline) was used:

$$VDV = \left[\int_0^T a^4(t) dt \right]^{0.25}$$

Where VDV is the vibration dose value in m/s^{1.75}, $a(t)$ is the frequency-weighted RMS of acceleration in m/s² and T is the total period of the day (in seconds) during which vibration may occur.

The acceptable Vibration Dose Values (VDV) for intermittent vibration are reproduced in Table 5.3.

Table 5.3 Acceptable vibration dose values (VDV) for intermittent vibration (m/s 1.75)

Location	Daytime		Night-time	
	Preferred value, m/s ^{1.75}	Maximum value, m/s ^{1.75}	Preferred value, m/s ^{1.75}	Maximum value, m/s ^{1.75}
Critical Areas	0.10	0.20	0.10	0.20
Residences	0.20	0.4	0.13	0.26
Offices, schools, educational institutions and places of worship	0.40	0.80	0.40	0.80
Workshops	0.80	1.60	0.80	1.60

Notes: 1. Daytime is 7 am to 10 pm and night-time is 10 pm to 7 am.
2. These criteria are indicative only, and there may be a need to assess intermittent values against continuous or impulsive criteria for critical areas.

There is a low probability of adverse comment or disturbance to building occupants at vibration values below the preferred values. Adverse comment or complaints may be expected if vibration values approach the maximum values. The guideline states that activities should be designed to meet the preferred values where an area is not already exposed to vibration.

5.2 Structural vibration criteria – DIN 4150

Structural vibration should be assessed at the foundation of a building structure. In the absence of a relevant Australian Standard, the German Standard *DIN 4150 - Part 3: 1999* provides guideline levels of vibration velocity for evaluating the effects of vibration in structures. The limits presented in this standard are generally recognised to be conservative.

The DIN 4150 values (maximum levels measured in any direction at the foundation, or maximum levels measured in (x) or (y) horizontal directions, in the plane of the uppermost floor), are summarised in Table 5.4 and shown graphically in Figure 5.1 in the case of foundation levels. For residential and commercial type structures, the standard recommends safe limits as low as 5 mm/s and 20 mm/s respectively. These limits increase with frequency values above 10 Hz. The operational frequency of construction plant typically ranges between 10 Hz to 30 Hz, and hence according to DIN 4150, the safe vibration criteria range for dwellings is 5 to 15 mm/s. For reinforced commercial type buildings the limit range is 20 to 40 mm/s.

Table 5.4 Structural damage guideline values of vibration velocity – DIN 4150

Line	Type of Structure	Vibration velocity in mm/s			
		At foundation at a frequency of			Plane of floor of uppermost storey
		1Hz to 10Hz	10Hz to 50 Hz	50Hz to 100Hz	All frequencies
1	Buildings used for commercial purposes, industrial buildings and buildings of similar design.	20	20 to 40	40 to 50	40
2	Dwellings and buildings of similar design and/or use.	5	5 to 15	15 to 20	15
3	Structures that because of their particular sensitivity to vibration do not correspond to those listed in Lines 1 or 2 and have intrinsic value (e.g. buildings that are under a preservation order).	3	3 to 8	8 to 10	8

Notes: 1. "Line" refers to curves in Figure 1 of DIN 4150.

2. For frequencies above 100Hz the higher values in the 50Hz to 100Hz column should be used.

These levels are 'safe limits', for which damage due to vibration effects is unlikely to occur. 'Damage' is defined in DIN 4150 to include even minor non-structural effects such as superficial cracking in cement render, the enlargement of cracks already present, and the separation of partitions or intermediate walls from load bearing walls.

Should such damage be observed without vibration levels exceeding the safe limits then it is likely to be attributable to other causes. DIN 4150 also states that when vibration levels higher than the safe limits are present, it does not necessarily follow that damage will occur.

As indicated by the criteria in Table 5.4, high frequency vibration has less potential to cause damage than lower frequencies. Furthermore, the 'point source' nature of vibration from plant causes the vibratory disturbances to arrive at different parts of nearby large structures in an out-of-phase manner, thereby reducing its potential to excite in-phase motion of the low order modes of vibration in such structures.

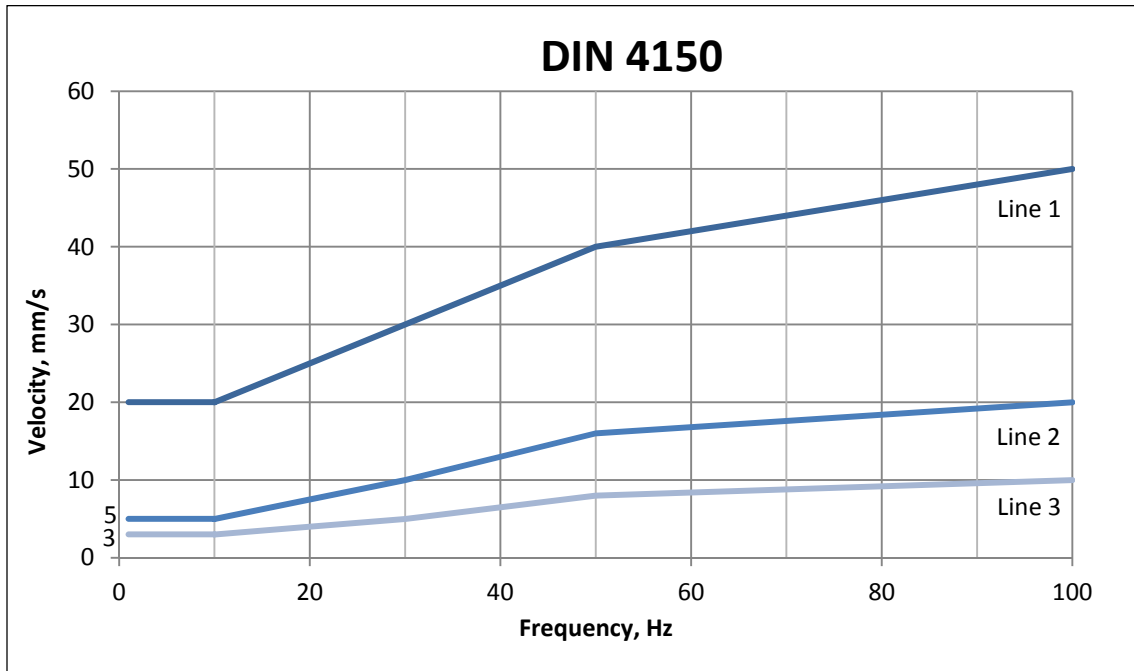


Figure 5.1 DIN 4150 Structural vibration safe limits for buildings

5.3 Ground-borne noise

Ground-borne noise is noise generated by vibration transmitted through the ground into a structure. The ICNG provides guidance on the assessment of ground-borne noise and relevant internal noise levels for the evening and night-time periods above which management actions should be implemented.

The proposed construction works are not expected to occur during the evening or night periods, and as such, ground-borne noise impacts are not expected at the nearest assessment locations.

6 Noise assessment

6.1 Noise modelling methodology

Construction noise levels were modelled using Brüel and Kjær Predictor software. 'Predictor' calculates total noise levels at assessment locations from the concurrent operation of multiple noise sources. The model has considered factors such as:

- the lateral and vertical location of noise sources;
- source to assessment location distances;
- ground effects;
- atmospheric absorption;
- topography of the site and surrounding area; and
- applicable meteorological conditions.

Predicted noise levels over a typical worst case 15-minute scenario were modelled and assessed for comparison against the relevant NMLs.

6.2 Construction plant and equipment

The construction noise impact assessment has adopted sound power levels from the EMM noise database for plant and equipment items used on similar projects. Plant and equipment items, sound power levels and quantities adopted in the noise modelling are summarised in Table 6.1.

The construction of the solar PV electricity generation facility would comprise the installation of PV solar panels and associated infrastructure. Site preparation would be the starting phase of the construction works, although minimum earthworks are expected to occur due to the relatively flat terrain and predominantly cleared landscape. The site preparation stage would be followed by the installation of the PV solar panels. This would include the driving or screwing of piles into the ground depending on the ground conditions, as well as the preparation of foundations for the inverter blocks. The PV solar panels would be arranged in a series of rows and are expected to be supported by ground-mounted framing. Underground cabling would connect the power from the inverters to the Balranald Substation. Other activities would include the construction of an electrical switchyard, a management hub and decommissioning of temporary infrastructure once construction works are completed.

Each stage of the construction works on-site will occur separately and hence some of the plant and equipment have been duplicated in for some of the activities (eg crane). However, connection to the Balranald 220 kV Substation via transmission line may occur concurrent to on-site construction activities.

Table 6.1 Typical construction plant and equipment

Stage	Plant and equipment items	Quantity (worst case per 15-min period) ¹	A-weighted sound power level, dB
Site preparation works	Excavator	1	104
	Dozer	1	110
	Light vehicle	4	76
	FEL	1	105
	Road truck (deliveries)	1	103
	Dump truck	2	108
	Grader	1	108
	Roller	1	116
	Compactor	1	112
	Crane	1	106
	Forklift	1	106
	Water truck	1	96
	Generator	2	98
Pile driving and foundations	Piling drill rig	1	115
	Road truck (deliveries)	1	103
	Crane	1	106
	Excavator	1	104
	Concrete truck	1	113
	Light vehicle	2	76
Underground cabling	Road truck (deliveries)	1	103
	Cable trenching and laying equipment	1	100
	Light vehicle	2	76
Solar panels full installation	Powered hand tools	1	97
	Compressor	1	108
	Pneumatic wrench	1	117
	Generator	1	98
	Crane	1	106
	Road truck (deliveries)	1	103
	Light vehicle	2	76
Transmission line	Crane	1	106
	Forklift	1	106
	Light vehicle	2	76
	Road truck (deliveries)	1	103
Management hub	Crane	1	106
	Forklift	1	106
	Light vehicle	2	76
	Road truck	1	103
	Generator	1	98
Removal of temporary site compound	Crane	1	106
	Forklift	1	106
	Light vehicle	2	76
	Road truck (deliveries)	1	103

- Notes:
1. Standard hours only: Monday to Friday 7 am to 6 pm, Saturday 8 am to 1 pm and no construction work on Sundays or public holidays.
 2. Plant and equipment items have been assumed to operate continuously in any 15-minute period.

6.3 Modelled meteorological conditions

Noise propagation over distance can be significantly affected by the prevailing weather conditions. During the daytime period (coinciding with standard construction hours), of most interest are source to receiver winds as these conditions can enhance received noise levels. For permanent activities (ie industrial operations), the INP specifies meteorological analysis procedures to determine the prevalent weather conditions, which recommends consideration of wind effects if they are a “feature” of the area. The INP defines “feature” as the presence of source-to-receiver wind speed (measured at 10 m above ground level) of 3 m/s or less, occurring for 30% of the time in any assessment period and season.

Meteorological data from the nearest Bureau of Meteorology’s (BoM) Automatic Weather Station (AWS) was analysed. Data recorded between January 2014 and December 2016 (3 years) from the BoM’s Swan Hill Aerodrome AWS (077094) was used for this assessment. The analysis identified that no winds were found to be a feature of the area during the day, evening or night periods and therefore only calm meteorological conditions were adopted for the construction noise modelling. Meteorological conditions adopted for the construction noise modelling are presented in Table 6.2.

Table 6.2 Meteorological conditions considered in noise modelling

Assessment period	Meteorological condition	Air temperature	Relative humidity	Wind speed	Wind direction	Stability category (Temperature gradient)
Day ¹	Calm	20°C	70%	0 m/s	n/a	D class

Notes: 1. Corresponds to standards construction hours as per the ICNG.

6.4 Construction noise modelling results

Based on the noise modelling results, the site preparation works have the most potential for noise impacts given the number of plant to be used, their emission levels, duration and locations of other construction activities, and therefore are the focus for the assessment. Noise from other construction activities would result in off-site noise levels that are below those from site preparation works.

Predicted construction noise levels for the site preparation works during standard construction hours are presented in Table 6.3. Construction noise levels are predicted to satisfy the recommended NMLs at all locations. Therefore, noise levels during all construction activities are expected to satisfy the NMLs at all locations.

Table 6.3 Construction (site preparation) noise predictions

Assessment locations	Land use	Predicted construction noise level		Construction NML
		$L_{Aeq(15-min)}$, dB		$L_{Aeq(15-min)}$, dB
		Calm		Standard hours ¹
R1	Residential	34		40
R2	Residential	<30		40
R3	Residential	<30		40
R4	Residential	<30		40

Table 6.3 Construction (site preparation) noise predictions

Assessment locations	Land use	Predicted construction noise level		Construction NML
		L _{Aeq} (15-min), dB		L _{Aeq} (15-min), dB
		Calm		Standard hours ¹
R5	Residential	<30		40
R6	Residential	<30		40

Notes: 1. Standard hours only: Monday to Friday 7 am to 6 pm, Saturday 8 am to 1 pm and no construction work on Sundays or public holidays.

6.5 Road traffic noise during construction

The proposed construction works will include the delivery of all construction plant and equipment, infrastructure and project parts (eg solar panels, mounting frames etc) to site by road trucks. Other traffic movements generated by the project will include movements from the construction workforce.

Daily average (and peak) traffic movements generated by construction deliveries and the construction workforce are summarised in Table 6.4. Site generated traffic movements north of the site access road would be travelling via the Sturt Highway and Yanga Way. South of the site access road, site generated traffic movements would be using Yanga Way, travelling from or via Swan Hill.

Table 6.4 Daily average traffic movements during construction

Construction scenario	Daily heavy vehicles movements	Daily workforce movements (light vehicles)	Total daily movements	Peak hourly workforce movements (light vehicles)	Peak hourly heavy vehicle movements	Total peak hourly movements
Average	24	180	204	45	4	49
Peak	43	400	443	100	6	106

It is expected that the majority (approximately 80%) of the construction deliveries will arrive from the south on Yanga Way, originating from either the Port of Melbourne or the Port of Portland, with the remainder of the deliveries (approximately 20%) from the north of site on Yanga Way and via the Sturt Highway.

Approximately 60% of the construction workforce is assumed, for the purposes of assessment, to be arriving from the south on Yanga Way. The remaining construction workforce (40%) will be based in either the township of Balranald (20%), or in the township of Hay (20%).

On Yanga Way, the nearest residential facade (roadside) that could potentially be affected by an increase in road traffic noise is set back approximately 45 m from the road in a 100 km/h speed zone. This residence is approximately 17 km south of the site boundary, close to the town of Kyalite. On other parts of the route and further away from the project (towards Swan Hill, approximately 80 km south of the project, or Hay, approximately 130 km east of the project), nearest residential facades are set back approximately 15 m and 20 m (or greater) from the road in a 50 km/h and 100 km/h speed zones, respectively. These distances have been adopted for the road traffic noise assessment. Road traffic noise results are based on the peak hourly workforce movements and construction delivery movements during peak construction scenario and hence this assessment of road traffic noise is therefore considered to be conservative.

Existing traffic data for Yanga Way (towards Swan Hill) and the Sturt Highway (towards Hay) was obtained from the publically available NSW Roads and Maritime Services' online database. This data was used to calculate the existing traffic volumes for 2017 assuming a 1% annual traffic growth (linear) for both roads. The existing (2017) average daily traffic volume on Yanga Way in the vicinity of the site has been calculated at 596 vehicles, including 29% (or 173) heavy vehicle movements. The existing (2017) average daily traffic volume on the Sturt Highway has been calculated at 1,083, including 45% (or 487) heavy vehicle movements.

Road traffic noise levels during construction works are predicted to be below the relevant criteria at the potentially worse affected residential dwellings on roads north and south of the site.

Table 6.5 Predicted road traffic noise during construction

Stage	Road	Distance to road (m)	Speed (km/h)	Existing traffic noise level, $L_{Aeq,period}$ dB	Site generated traffic noise level, $L_{Aeq,period}$ dB ¹	Future traffic noise level, $L_{Aeq,period}$ dB	Criteria, $L_{Aeq,period}$ dB
Peak	Yanga Way	≥45	100	51	50	54	60
		≥20	100	55	54	58	60
	Sturt Highway	≥300	100	45	37	46	60
		≥15	50	57	48	58	60

Notes: 1. Based on the peak hourly workforce movements and construction delivery movements.

6.6 Cumulative construction noise

Sunraysia Solar Farm Two Pty Ltd (Sunraysia) is seeking to develop the Sunraysia Solar Farm immediately south of the project. The construction works for the Sunraysia Solar Farm have potential to occur at the same time as that of the project. Modelling results from the proposed construction works for the project are predicted to satisfy the NMLs at all assessment locations. As noted earlier, the predictions assume plant and equipment are operating simultaneously and at the nearest locations to relevant residential receivers, hence it is likely that actual noise levels from the proposed construction works will be lower than predicted.

The Sunraysia Solar Farm noise assessment report prepared by Renzo Tonin and Associates (NSW) Pty Ltd (Renzo Tonin) dated 23 November 2016 indicated that predicted construction $L_{Aeq(15-min)}$ noise levels will be 32 dB (at worse) or less at the nearest residential receiver. Using these predictions for the Sunraysia Solar Farm and predicted levels for the project (results in Table 6.3), the total cumulative noise level from both developments would still satisfy the NMLs during standard hours at the identified assessment locations. Therefore, cumulative noise from the project and the Sunraysia Solar Farm is not anticipated to cause an impact at nearby identified sensitive receivers.

Further, there is potential for cumulative road traffic movements from both the project and the Sunraysia Solar Farm. Road traffic noise results for the Sunraysia Solar Farm show that road traffic noise generated during the construction stage is predicted to be 51 dB $L_{Aeq(15-hour)}$ at the nearest residence (20 m from facade of dwelling to the road) on Yanga Way and would therefore satisfy the 60 dB $L_{Aeq(15-hour)}$ criterion (Renzo Tonin 2016). Given the conservative approach taken for the assessment of road traffic noise and future (site generated and existing) predicted levels for the project (Table 6.5), as well as predicted levels for the Sunraysia Solar Farm, the total cumulative road traffic noise levels from both developments are anticipated to satisfy the relevant criteria. Therefore, it is unlikely that traffic generated during the construction phase of both developments would cause a noise impact at residential dwellings nearest to the road.

7 Construction vibration assessment

The majority of vibration generating activities associated with the proposed construction works use a roller and a piling drill rig. As a guide, safe working distances for typical items of vibration intensive plant are listed in Table 7.1. The safe working distances are quoted for both 'Cosmetic Damage' (refer British Standard BS 7385) and 'Human Comfort' (refer British Standard BS 6472-1).

Table 7.1 Recommended safe working distances for vibration intensive plant

Plant item ¹	Rating/description	Safe working distance	
		Cosmetic damage (BS 7385)	Human response (BS 6472)
Vibratory Roller	<50 kN (typically 1–2 tonnes)	5 m	15 to 20 m
	<100 kN (typically 2–4 tonnes)	6 m	20 m
	<200 kN (typically 4–6 tonnes)	12 m	40 m
	<300 kN (typically 7–13 tonnes)	15 m	100 m
	>300 kN (typically 13–18 tonnes)	20 m	100 m
	>300 kN (>18 tonnes)	25 m	100 m
Small hydraulic hammer	(300 kg - 5 to 12 tonne excavator)	2 m	7 m
Medium hydraulic hammer	(900 kg - 12 to 18 tonne excavator)	7 m	23 m
Large hydraulic hammer	(1,600 kg - 18 to 34 tonne excavator)	22 m	73 m
Vibratory pile driver	Sheet piles	2 m to 20 m	20 m
Pile boring	≤800 mm	2 m (nominal)	N/A
Jackhammer	Hand held	1 m (nominal)	Avoid contact with structure

Source: *Transport Infrastructure Development Corporation Construction's Construction Noise Strategy (Rail Projects), November 2007.*

Notes: 1. Plant items shown are indicative to illustrate safe working distances, not all plant items will be used.

The safe working distances presented in Table 7.1 are indicative and will vary depending on the particular item of plant and local geotechnical conditions. They apply to cosmetic damage of typical buildings under typical geotechnical conditions.

In relation to human comfort response, the safe working distances in Table 7.1 relate to continuous vibration and apply to residential receivers. For most construction activities, vibration emissions are intermittent in nature and for this reason, higher vibration levels, occurring over shorter periods are allowed, in accordance with BS 6472-1.

The nearest residence is approximately 2.9 km from the nearest point of the development footprint to the north. Given these distances are well outside the safe working distance for cosmetic damage and human comfort, it is therefore anticipated that impact is highly unlikely to occur from the proposed construction works.

8 Operational noise

Noise impact from the general operation of the project was considered at assessment locations R1-R6, with the nearest residential receiver approximately 2.9 km from the development footprint. A semi-qualitative assessment of the potential impact from operational noise identified that the $L_{Aeq(15-min)}$ noise levels from the proposed development would be well below (<30 dB) the minimum INP criterion of 35 dB during worst case assessable meteorological conditions (eg F class inversion during the night-time period or 3 m/s source to receiver winds). Therefore, no impact is anticipated during the operational stage of the project.

9 Conclusion

EMM has completed a construction noise and vibration impact assessment for proposed construction works and infrastructure for the Limondale Sun Farm south of the township of Balranald, NSW.

The nearest assessment location (a residence) is approximately 2.9 km north of the development footprint. Modelling has demonstrated that noise levels during construction are predicted to satisfy the relevant NMLs during standard hours at all assessment locations.

It is unlikely that vibration associated with the proposed construction works will generate impacts at the nearest assessment locations.

Traffic generated by the project is not expected to result in any noticeable increase in average road traffic noise levels at the nearest residential locations north or south of the project.

Cumulative noise impact was considered in the construction noise assessment, however was identified as unlikely given construction noise levels and road traffic noise levels from the project are predicted to be well below the relevant NMLs and criteria, respectively.

No noise impacts are anticipated during operation of the Limondale Sun Farm.

References

Australian Standard (AS) 1055-1997, Acoustics - Description and Measurement of Environmental Noise.

Australian Standard (AS) 2436-2010, Guide to Noise and Vibration Control on Construction, Maintenance and Demolition Sites.

NSW Department of Environment, Climate Change and Water (2011) *NSW Road Noise Policy*.

NSW Department of Environment and Conservation (DEC) (2006) *Assessing Vibration: a technical guideline*.

NSW Environment Protection Authority (2000) *NSW Industrial Noise Policy*.

NSW Environment Protection Authority (2009) *NSW Interim Construction Noise Guideline*.

Renzo Tonin & Associates (NSW) Pty Ltd (Renzo Tonin) 2016, *Sunraysia Solar Farm, Balranald - Construction and Operational Noise and Vibration Assessment*. Report prepared by Renzo Tonin for Sunraysia Solar Farm Two Pty Ltd.

Appendix A

Acoustic terms

Several technical terms discussed in this report are explained in Table A.1.

Table A.1 Glossary of acoustic terms

Term	Description
dB	Noise is measured in units called decibels (dB). There are several scales for describing noise, the most common being the 'A-weighted' scale. This attempts to closely approximate the frequency response of the human ear.
L _{A90}	Commonly referred to as the background noise level. The 'A-weighted' noise level exceeded 90% of the time.
L _{Aeq}	The energy average noise from a source. This is the equivalent continuous 'A-weighted' sound pressure level over a given period. The L _{Aeq(15-min)} descriptor refers to an L _{Aeq} noise level measured over a 15 minute period.
L _{Amax}	The maximum root mean squared 'A-weighted' sound pressure level (or maximum noise level) received during a measuring interval.
RBL	The Rating Background Level (RBL) is an overall single value background level representing each assessment period over the whole monitoring period.
Sound power level	This is a measure of the total power radiated by a source. The sound power of a source is a fundamental property of the source and is independent of the surrounding environment.
Day period	Monday – Saturday: 7 am to 6 pm, on Sundays and Public Holidays: 8 am to 6 pm.
Evening period	Monday – Saturday: 6 pm to 10 pm, on Sundays and Public Holidays: 6 pm to 10 pm.
Night period	Monday – Saturday: 10 pm to 7 am, on Sundays and Public Holidays: 10 pm to 8 am.

It is useful to have an appreciation of decibels (dB), the unit of noise measurement. Table A.2 gives an indication as to what an average person perceives about changes in noise levels.

Table A.2 Perceived change in noise

Change in sound level (dB)	Perceived change in noise
3	just perceptible
5	noticeable difference
10	twice (or half) as loud
15	large change
20	four times (or quarter) as loud



SYDNEY

Ground floor, Suite 01, 20 Chandos Street
St Leonards, New South Wales, 2065
T 02 9493 9500 F 02 9493 9599

NEWCASTLE

Level 1, Suite 6, 146 Hunter Street
Newcastle, New South Wales, 2300
T 02 4907 4800 F 02 4907 4899

BRISBANE

Level 4, Suite 01, 87 Wickham Terrace
Spring Hill, Queensland, 4000
T 07 3839 1800 F 07 3839 1866

