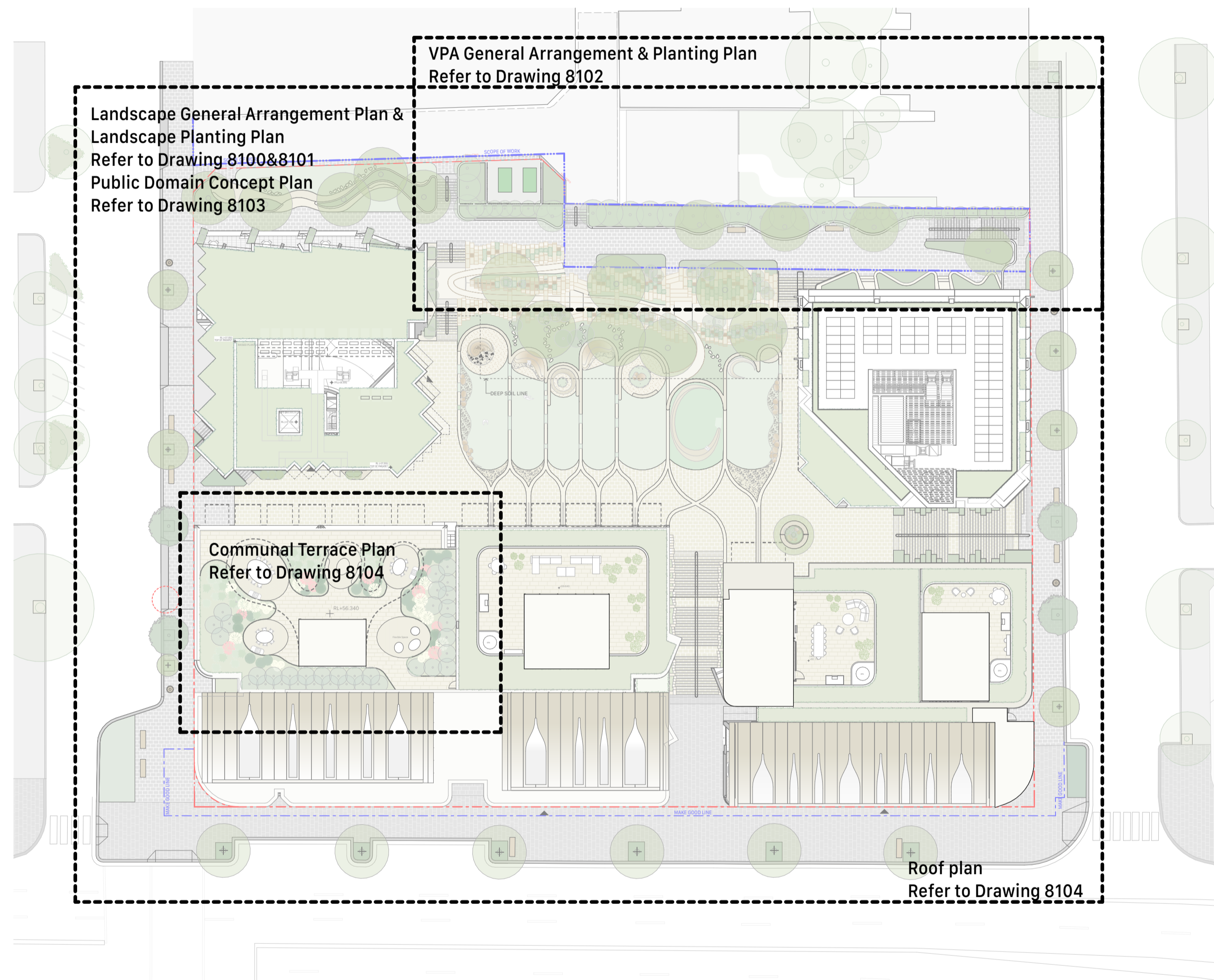


164-172 & 174-194 WILLIAM STREET LANDSCAPE STATE SIGNIFICANT DEVELOPMENT APPLICATION

Landscape Drawing List		
8000 Landscape		
8000	Cover Sheet	
8001	Schedules	
8100 Landscape Plans		
8100	Landscape General Arrangement Plan	1:200
8101	Landscape Planting Plan	1:200
8102	VPA General Arrangement & Planting Plan	1:100
8103	Public Domain Concept Plan	1:200
8104	Communal Terrace & Landscaped Roof Plan	1:100 1:400
8200 Landscape Sections		
8200	Sections	1:100
8201	Street Interface Sections	1:100



1	28/8/2025	for SSDA Approval	KY
01	13/8/2025	Issued for SSDA	MZ

Rev	Date	Description	By	Chk
-----	------	-------------	----	-----

164-172 and 174-194 William St
Australia
164-172 and 174-194 William St
Woolloomooloo NSW 2011

Landscape **Scale**
Cover Sheet No Scale @ A1

Project Code **First Issued**
H180W 28/8/2025

Sheet No. **Rev**
8000 1

MATERIAL AND FINISH SCHEDULE

- SITE BOUNDARY
- VPA
- SCOPE OF WORK
- EX XXXX EXISTING LEVELS
- RL XXXX PROPOSED LEVELS
- TK XXXX TOP OF KERB LEVELS
- TOW XXXX TOP OF WALL LEVELS
- RESIDENTIAL ENTRY

HARDSCAPE

- GRV1 - SANDSTONE ROCK BOULDER
- GRV2 - CRUSHED AGGREGATE SANDSTONE AND SHELL
- PAV1 - GRANITE PAVEMENT HONEY JASPER OR SIMILAR
- PAV2 - PRECAST UNIT WITH INLAY AUSTRAL BLACK GRANITE PAVING
- PAV3 - AUSTRAL BLACK GRANITE PAVING
- PAV4 - STONE PAVING INTERPRETIVE PAVEMENT INLAYS
- PAV5 - STONE PAVING
- PAV6 - SANDSTONE PAVEMENT INLAYS
- PAV7 - STONE PAVING
- PAV10 - STEPPING STONES
- PAV11 - STONE PAVING
- TD1 - TIMBER DECKING
- RTW1 - SANDSTONE (RECYCLED) BLOCKS
- RTW2 - SANDSTONE WALL
- RTW3 - OFF FORM WARM TONE TEXTURE CONCRETE WALL
- RTW4 - TEXTURE FINISH CONCRETE WALL

FURNITURES

- BNCH1 - CUSTOM SEATING TYPE 1 PART OF CONNECTING WITH COUNTRY DESIGN
- BNCH2 - CUSTOM SEATING TYPE 2 PART OF CONNECTING WITH COUNTRY DESIGN
- BNCH3 - FREE STANDING TIMBER BATTEN SEATING
- BNCH4 - INTEGRATED TIMBER SEATING
- FN1 - FENCE
- LSTAIR1 - HONEY JASPER OR SIMILAR GRANITE STAIR WITH DOUBLE HANDRAIL
- LSTAIR2 - AUSTRAL BLACK STAIR DOUBLE HANDRAIL
- LSTAIR3 - AUSTRAL BLACK STAIR SINGLE HANDRAILS
- PLB1 - PLANTER BOX
- PLB2 - FACADE INTEGRATED WITH FERN AND GULLY PLANTS

SOFTSCAPE

- MASS PLANTING
- AREAS OF TURF
- LARGE SHRUBS
- NATIVE FLOWERING LARGE SHRUBS
- SCREEN PLANTING
- PROPOSED TREES

MATERIAL AND FINISH SCHEDULE (PUBLIC DOMAIN & VPA ZONE)

- SITE BOUNDARY
- VPA
- SCOPE OF WORK
- EX XXXX EXISTING LEVELS
- RL XXXX PROPOSED LEVELS
- TK XXXX TOP OF KERB LEVELS
- TOW XXXX TOP OF WALL LEVELS
- RESIDENTIAL ENTRY

PUBLIC DOMAIN & VPA ZONE

- BIN1 - (TO CITY OF SYDNEY SPECIFICATION)
- BNCH5 - BENCH SEATING (TO CITY OF SYDNEY SPECIFICATION)
- LSTAIR2 - AUSTRAL BLACK GRANITE STAIR WITH DOUBLE HANDRAIL & GRANITE NOSING & TACTILES
- PAV2 - PRECAST UNIT (TO CITY OF SYDNEY SPECIFICATION)
- PAV3 - AUSTRAL BLACK GRANITE PAVEMENT (TO CITY OF SYDNEY SPECIFICATION)
- PLB1 - PLANTER BOX
- TRG1 - TREE GRATE (TO CITY OF SYDNEY SPECIFICATION)
- BYR1 - POLE MOUNTED BIKE RAIL EXISTING
- BYR2 - BIKE RAIL (TO CITY OF SYDNEY SPECIFICATION) 20 SPACES

SOFTSCAPE

- MASS PLANTING
- LARGE SHRUBS
- NATIVE FLOWERING LARGE SHRUBS
- SCREEN PLANTING
- EXISTING TREE TO BE REMOVED (REFER TO ARBORIST REPORT)
- EXISTING TREES
- PROPOSED PUBLIC DOMAIN TREES

PLANTING SCHEDULE

CODE	BOTANICAL NAME	COMMON NAME	INDICATIVE CONTAINER SIZE	HEIGHT AT MATURITY (5-10 YEARS)	MASSING Plant per m2
MAIN PARK - FOREST					
TREES					
Ac	<i>Angophora costata</i>	Sydney Red Gum	1000L	14-18m	As Shown
Ah	<i>Angophora hispida</i>	Dwarf Apple	1000L	12-14m	As Shown
Cy	<i>Coymbia Yellow bloodwood</i>	Yellow bloodwood	1000L	15-18m	As Shown
Eg	<i>Eucalyptus gummifera</i>	Red Bloodwood	1000L	16-20m	As Shown
Ep	<i>Eucalyptus Piperita</i>	Sydney Peppermint	1000L	15-20m	As Shown
Es	<i>Eucalyptus Saligna</i>	Sydney Blue Gum	1000L	20-25m	As Shown
Er	<i>Eucalyptus robusta</i>	Swamp Mahogany	1000L	20-25m	As Shown
Xa	<i>Xanthorrhoea arborea</i>	Grass tree	1.2m tall	3m	As Shown
Xg	<i>Xanthorrhoea galuca</i>	Grass tree	1.2m tall	3m	As Shown
Xr	<i>Xanthorrhoea resinifera</i>	Grass tree	1m tall	2m	As Shown
LARGE SHRUBS					
	<i>Acacia longifolia</i>	Sydney Golden Wattle	400mm	2.5-3m	As Shown
	<i>Acacia suaveolens</i>	Sweet Wattle	300mm	1-2m	As Shown
	<i>Banksia aemula</i>	Wallum Banksia	400mm	3-4m	As Shown
	<i>Banksia robur</i>	heath-leaved banksia	400mm	3-4m	As Shown
	<i>Doryathes excelsa</i>	Gynea Lily	300mm	1-1.5m	As Shown
	<i>Grevillea buxifolia</i>	Grey Spider Flower	400mm	2m	As Shown
	<i>Indigofera australis</i>	Australian Indigo	400mm	2m	As Shown
SMALL SHRUBS					
	<i>Boronia ledifolia</i>	Sydney Boronia	200mm	800mm	As Shown
	<i>Calytrix tetragona</i>	Common Fringe Myrtle	300mm	900mm	As Shown
	<i>Correa alba</i>	White Correa	200mm	800mm	As Shown
	<i>Dillwynia retorta</i>	Eggs and bacon	400mm	2-2.5m	As Shown
	<i>Grevillea sericea</i>	Silky Grevillea	300mm	1.2-2m	As Shown
	<i>Grevillea speciosa</i>	Red Spider Flower	300mm	1m	As Shown
NATIVE GRASSES & RUSHES & GROUNDCOVERS					
	<i>Actinotus helianthi</i>	Flannel Flower	150mm	300mm	3
	<i>Austrostipa scabra</i>	Wallaby Grass	150mm	650mm	6
	<i>Banksia spinulosa 'Birthday'</i>	Creeping Banksia	200mm	Spreader	3
	<i>Dianella caerulea</i>	Blue Flax-lily	150mm	650mm	6
	<i>Epacris longiflora</i>	Fuchsia Heath	200mm	500mm	4
	<i>Hardenbergia violaceae</i>	Happy Wanderer	200mm	Spreader	2
	<i>Viola hederacea</i>	Native violet	100mm	Spreader	9
	<i>Westringia Low horizon</i>	Coast Rosemary	200mm	300mm	3
POCKET PARK - WATERS EDGE					
TREES					
Bm	<i>Backhousia myrtifolia</i>	Grey Myrtle	800L	8m x 5m	As Shown
Ba	<i>Brachychiton Acerifolius</i>	Kurrajong/Illawarra Flame	800L	9m x 5m	As Shown
Cs	<i>Callicoma serratifolia</i>	Blackwattle	800L	6.5 x 4.5	As Shown
Mq	<i>Melaleuca quinquenervia</i>	Broad leaved paperbark	800L	5Hmx 3mW	As Shown
LARGE SHRUBS SCREEN PLANTING					
	<i>Waterhousia wisper</i>	Lillypilly	75L	4m	As Shown
NATIVE GRASSES & RUSHES & GROUNDCOVERS					
	<i>Dianella caerulea</i>	Blue Flax-lily	150mm	650mm	6
	<i>Isolepis nodosa</i>	Knobby Club Rush	150mm	650mm	6
	<i>Lomandra katrinus</i>	Mat-Rush	200mm	800mm	6
	<i>Lomandra longifolia</i>	Spiny Headed Matt Rush	150mm	1m	4
PARK - ESCARPMENT					
NATIVE GRASSES & GROUNDCOVERS					
	<i>Banksia spinulosa 'Birthday'</i>	Creeping Banksia	200mm	Spreader	3
	<i>Dendrobium speciosum</i>	Sydney rock orchid	150mm	500mm	4
	<i>Dianella caerulea</i>	Blue Flax-lily	150mm	650mm	6
	<i>Epacris longiflora</i>	Fuchsia Heath	200mm	500mm	4
	<i>Eriostemon australasius</i>	Pink wax flower	150mm	600mm	4
	<i>Hardenbergia violaceae</i>	Happy Wanderer	200mm	Spreader	2
	<i>Hibbertia scandens</i>	Climbing Guinea Flower	200mm	Spreader	2
	<i>Lomandra katrinus</i>	Mat-Rush	200mm	800mm	6
	<i>Lomandra longifolia</i>	Spiny Headed Matt Rush	150mm	1m	4
	<i>Poa poliformis</i>	Tussock-grass	150mm	600mm	6
INTEGRATED PLANTERS					
	<i>Actinotus helianthi</i>	Flannel Flower	150mm	300mm	3
	<i>Austrostipa scabra</i>	Wallaby Grass	150mm	650mm	6
	<i>Banksia spinulosa</i>	Creeping Banksia	200mm	Spreader	3
	<i>Dianella caerulea</i>	Blue Flax-lily	150mm	650mm	6
	<i>Doryathes excelsa</i>	Gynea Lily	300mm	1-1.5m	As Shown
	<i>Hardenbergia violaceae</i>	Happy Wanderer	200mm	Spreader	2
	<i>Hibbertia scandens</i>	Climbing Guinea Flower	200mm	Spreader	2
	<i>Lomandra katrinus</i>	Mat-Rush	200mm	800mm	6
	<i>Lomandra longifolia</i>	Spiny Headed Matt Rush	150mm	1m	4
	<i>Westringia Low horizon</i>	Coast Rosemary	200mm	300mm	3
PLANTED ROOF					
	<i>Cissus antarctica</i>	Kangaroo vine	150mm	Spreader	4
	<i>Dianella caerulea</i>	Blue Flax-lily	150mm	650mm	6
	<i>Hardenbergia violaceae</i>	Happy Wanderer	200mm	Spreader	2
	<i>Isolepis nodosa</i>	Knobby Club Rush	150mm	650mm	6
	<i>Lomandra katrinus</i>	Mat-Rush	200mm	800mm	6
	<i>Themeda Mingo</i>	Kangaroo Grass	150mm	600mm	4
	<i>Westringia Low horizon</i>	Coast Rosemary	200mm	300mm	3
GULLY GARDENS					
TREES					
Cc	<i>Cyathea cooperii</i>	Tree Fern	1.2m tall	3m	As Shown
FERNS & GROUNDCOVERS					
	<i>Adiantum aethiopicum</i>	Maidenhair fern	200mm	400mm	3
	<i>Asplenium australasicum</i>	Birds nest	300mm	1m	2
	<i>Blechnum nudum</i>	Water fern	200mm	1200mm	4
	<i>Cissus antarctica</i>	Kangaroo vine	200mm	Spreader	1
	<i>Dendrobium speciosum</i>	Sydney Rock Orchid	200mm	600mm	4
	<i>Dichandra repens</i>	Kidney weed	200mm	Groundcover	12
	<i>Gleichenia microphylla</i>	Coral fern	200mm	600mm	4
	<i>Pteris spec.</i>	Brake Fern	200mm	500mm	4
	<i>Rumohra adiantiformis</i>	Leather fern	200mm	600mm	4
COMMUNAL ROOF TOP					
SHRUBS, NATIVE GRASSES & GROUNDCOVERS					
	<i>Acacia suaveolens</i>	Sweet Wattle	300mm	1-2m	As Shown
	<i>Banksia spinulosa</i>	Creeping Banksia	200mm	Spreader	3
	<i>Crassula 'Max cook'</i>	Jade	300mm	650mm	4
	<i>Dianella caerulea</i>	Blue Flax-lily	150mm	650mm	6
	<i>Doryathes excelsa</i>	Gynea Lily	300mm	1-1.5m	As Shown
	<i>Euphorbia Wulfenii</i>	Mediterranean Spurge	300mm	800mm	3
	<i>Grevillea sericea</i>	Silky Grevillea	300mm	800mm	2
	<i>Lomandra katrinus</i>	Mat-Rush	200mm	800mm	6
	<i>Prostrate rosemary</i>	Creeping rosemary	300mm	Groundcover	3
	<i>Russelia equisetiformis</i>	Firecracker plant	300mm	800mm	3
	<i>Syzigium resilience</i>	Lilly Pilly	400mm	1m 30s	1
	<i>Waterhousia wisper</i>	Lillypilly	75L	4m	As Shown
	<i>Westringia Low horizon</i>	Coast Rosemary	200mm	300mm	4

CODE	BOTANICAL NAME	COMMON NAME	INDICATIVE CONTAINER SIZE	HEIGHT AT MATURITY (5-10 YEARS)	MASSING Plant per m2
VPA AREA					
TREES					
Er	<i>Elaeagnus reticulatus</i>	Blueberry ash	800L	5Hmx 3mW	As Shown
LARGE SHRUBS SCREEN PLANTING					
	<i>Waterhousia wisper</i>	Lillypilly	75L	4m	As Shown
NATIVE GRASSES & RUSHES & GROUNDCOVERS					
	<i>Dianella caerulea</i>	Blue Flax-lily	150mm	650mm	6
	<i>Isolepis nodosa</i>	Knobby Club Rush	150mm	650mm	6
	<i>Lomandra katrinus</i>	Mat-Rush	200mm	800mm	6
	<i>Lomandra longifolia</i>	Spiny Headed Matt Rush	150mm	1m	4
FERNS AND GROUNDCOVERS					
	<i>Asplenium australasicum</i>	Birds nest	300mm	1m	2
	<i>Blechnum nudum</i>	Water fern	200mm	1200mm	4
	<i>Cissus antarctica</i>	Kangaroo vine	200mm	Spreader	1
	<i>Gleichenia microphylla</i>	Coral fern	200mm	600mm	4
STREET TREES (PART OF PUBLIC DOMAIN)					
TREES					
Lt	<i>Liriodendron tulipifera</i>	Tulip Tree	500L	8m x 5m	As Shown
Wfg	<i>Waterhousia floribunda Green</i>	Weeping Lillypilly	500L	8m x 5m	As Shown

1 28/8/2025 for SSDA Approval KY
01 13/8/2025 Issued for SSDA MZ

Rev Date Description By Chk

164-172 and 174-194 William St
Australia
164-172 and 174-194 William St
Woolloomooloo NSW 2011

Landscapes Scale
Schedules No Scale @ A1

Project Code First Issued
H180W 28/8/2025

Sheet No. Rev
8001 1

General notes
 - All dimensions and existing conditions shall be checked and verified by the contractor before proceeding with the work.
 - All levels relative to 'Australian Height Datum'.
 - Do not scale drawings.
 - Use figured dimensions only.

Legend

- SITE BOUNDARY
- VPA
- SCOPE OF WORK
- + EX XXXX EXISTING LEVELS
- + RL XXXX PROPOSED LEVELS
- + TK XXXX TOP OF KERB LEVELS
- + TOW XXXX TOP OF WALL LEVELS
- ▲ RESIDENTIAL ENTRY

HARDSCAPE

- GRV1 - SANDSTONE ROCK BOULDER
- GRV2 - CRUSHED AGGREGATE SANDSTONE AND SHELL
- PAV1 - GRANITE PAVEMENT HONEY JASPER OR SIMILAR
- PAV2 - PRECAST LINT WITH INLAY AUSTRAL BLACK GRANITE PAVING
- PAV3 - AUSTRAL BLACK GRANITE PAVING
- PAV4 - STONE PAVING INTERPRETIVE PAVEMENT NLAYS
- PAV5 - STONE PAVING
- PAV6 - SANDSTONE PAVEMENT NLAYS
- PAV7 - STONE PAVING
- PAV8 - STEPPING STONES
- PAV9 - STONE PAVING
- TD1 - TIMBER DECKING
- RTW1 - SANDSTONE RECYCLED BLOCKS
- RTW2 - SANDSTONE WALL
- RTW3 - OFF FORM WARM TONE TEXTURE CONCRETE WALL
- RTW4 - TEXTURE FINISH CONCRETE WALL

FURNITURES

- BNCH1 - CUSTOM SEATING TYPE 1 PART OF CONNECTING WITH COUNTRY DESIGN
- BNCH2 - CUSTOM SEATING TYPE 2 PART OF CONNECTING WITH COUNTRY DESIGN
- BNCH3 - FREE STANDING TIMBER BATTEN SEATING
- BNCH4 - INTEGRATED TIMBER SEATING
- FN1 - FENCE
- LSTAIR1 - HONEY JASPER OR SIMILAR GRANITE STAIR WITH DOUBLE HANDRAIL
- LSTAIR2 - AUSTRAL BLACK STAIR DOUBLE HANDRAIL
- LSTAIR3 - AUSTRAL BLACK STAIR SINGLE HANDRAILS
- PLB1 - PLANTER BOX
- PLB2 - FACADE INTEGRATED WITH FERN AND GULLY PLANTS

SOFTSCAPE

- MASS PLANTING
- AREAS OF TURF
- LARGE SHRUBS
- SCREEN PLANTING
- PROPOSED TREES

1	28/8/2025	for SSDA Approval	KY
01	13/8/2025	Issued for SSDA	MZ

Rev	Date	Description	By	Chk
-----	------	-------------	----	-----

164-172 and 174-194 William St
 Australia
 164-172 and 174-194 William St
 Woollloomooloo NSW 2011

Landscape Plans Scale
 Landscape General Arrangement 1:200 @ A1
 Plan

Project Code First Issued
 H180W 28/8/2025

Sheet No. Rev
 8100 1



General notes
 - All dimensions and existing conditions shall be checked and verified by the contractor before proceeding with the work.
 - All levels relative to 'Australian Height Datum'.
 - Do not scale drawings.
 - Use figured dimensions only.

- Legend**
- SITE BOUNDARY
 - VPA
 - SCOPE OF WORK
 - MASS PLANTING
 - AREAS OF TURF
 - LARGE SHRUBS
 - NATIVE FLOWERING LARGE SHRUBS
 - SCREEN PLANTING
 - PROPOSED TREES



Rev	Date	Description	By	Chk
1	28/8/2025	for SSDA Approval	KY	
01	13/8/2025	Issued for SSDA	MZ	

164-172 and 174-194 William St
 Australia
 164-172 and 174-194 William St
 Woollloomooloo NSW 2011

Landscape Plans Scale
 Landscape Planting Plan 1:100 @ A1

Project Code First Issued
 H180W 28/8/2025

Sheet No. Rev
 8101 1

- General notes**
- All dimensions and existing conditions shall be checked and verified by the contractor before proceeding with the work.
 - All levels relative to 'Australian Height Datum'.
 - Do not scale drawings.
 - Use figured dimensions only.

Legend

- - - SITE BOUNDARY
 - - - VPA
 - + EX XXXX EXISTING LEVELS
 - + RL XXXX PROPOSED LEVELS
 - + TK XXXX TOP OF KERB LEVELS
 - + TOW XXXX TOP OF WALL LEVELS
- PUBLIC DOMAIN & VPA ZONE**
- BN1 - BENCH (TO CITY OF SYDNEY SPECIFICATION)
 - BNCH5 - BENCH SEATING (TO CITY OF SYDNEY SPECIFICATION)
 - LSTAIR2 - AUSTRALIAN BLACK STAIR (TO CITY OF SYDNEY SPECIFICATION)
 - PAV2 - PRECAST UNIT (TO CITY OF SYDNEY SPECIFICATION)
 - PAV3 - AUSTRALIAN BLACK GRANITE PAVEMENT (TO CITY OF SYDNEY SPECIFICATION)
 - PLB1 - PLANTER BOX
 - TRG1 - TREE GRATE (TO CITY OF SYDNEY SPECIFICATION)
- SOFTSCAPE**
- MASS PLANTING
 - LARGE SHRUBS
 - NATIVE FLOWERING LARGE SHRUBS
 - SCREEN PLANTING
 - EXISTING TREE TO BE REMOVED (REFER TO ARBORIST REPORT)
 - EXISTING TREES
 - PROPOSED PUBLIC DOMAIN TREES



1	28/8/2025	for SSDA Approval	KY
01	13/8/2025	Issued for SSDA	MZ

Rev	Date	Description	By	Chk
-----	------	-------------	----	-----

164-172 and 174-194 William St
Australia
164-172 and 174-194 William St
Woolloomooloo NSW 2011

Landscape Plans **Scale**
VPA General Arrangement & Planting 1:100 @ A1
Plan

Project Code **First Issued**
H180W 28/8/2025

Sheet No. **Rev**
8102 1

General notes

- All dimensions and existing conditions shall be checked and verified by the contractor before proceeding with the work.
- All levels relative to 'Australian Height Datum'.
- Do not scale drawings.
- Use figured dimensions only.

Legend

- SITE BOUNDARY
- VPA
- SCOPE OF WORK
- + EX XXXX EXISTING LEVELS
- + RL XXXX PROPOSED LEVELS
- + TK XXXX TOP OF KERB LEVELS
- + TOW XXXX TOP OF WALL LEVELS

PUBLIC DOMAIN & VPA ZONE

- BIN1 - (TO CITY OF SYDNEY SPECIFICATION)
- BNCH5 - BENCH SEATING (TO CITY OF SYDNEY SPECIFICATION)
- LSTAIR2 - AUSTRALIAN BLACK GRANITE STAIR WITH SQUARE HANDRAIL & GRANITE NOSING & TACTILES
- PAV2 - PRECAST UNIT (TO CITY OF SYDNEY SPECIFICATION)
- PAV3 - AUSTRALIAN BLACK GRANITE PAVEMENT (TO CITY OF SYDNEY SPECIFICATION)
- PLB1 - PLANTER BOX
- TRG1 - TREE GRATE (TO CITY OF SYDNEY SPECIFICATION)
- BYR1 - POLE MOUNTED BIKE RAIL EXISTING
- BYR2 - BIKE RAIL (TO CITY OF SYDNEY SPECIFICATION @ SPACES)

SOFTSCAPE

- MASS PLANTING
- LARGE SHRUBS
- NATIVE FLOWERING LARGE SHRUBS
- SCREEN PLANTING
- EXISTING TREE TO BE REMOVED (REFER TO ARBORIST REPORT)
- EXISTING TREES
- PROPOSED PUBLIC DOMAIN TREES



Rev	Date	Description	By	Chk
01	28/8/2025	for SSDA Approval	KY	
	13/8/2025	Issued for SSDA	MZ	

164-172 and 174-194 William St
Australia
164-172 and 174-194 William St
Woollloomooloo NSW 2011

Landscape Plans Scale: 1:200 @ A1
Public Domain Concept Plan

Project Code H180W **First Issued** 28/8/2025

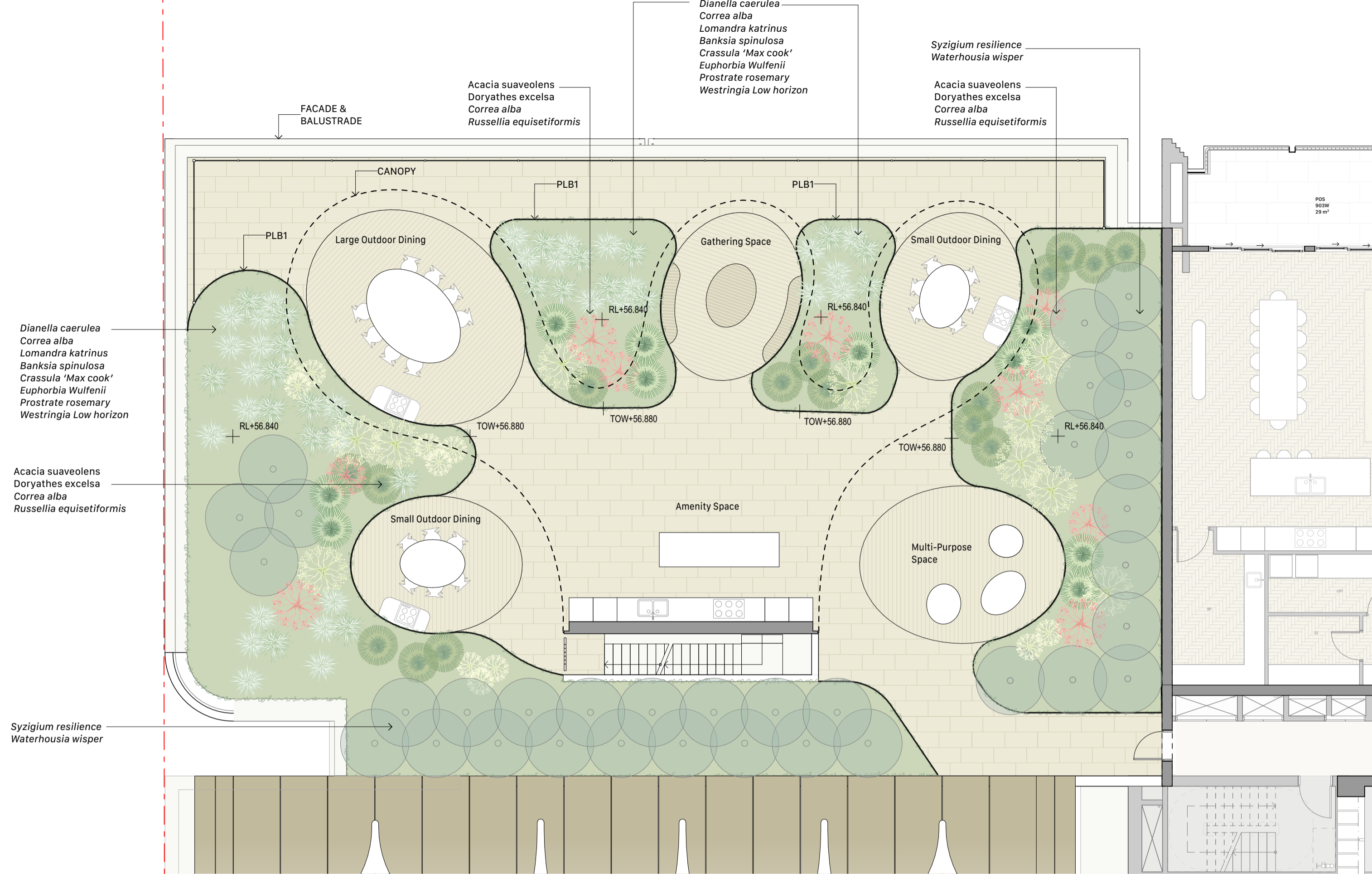
Sheet No. 8103 **Rev** 1

General notes

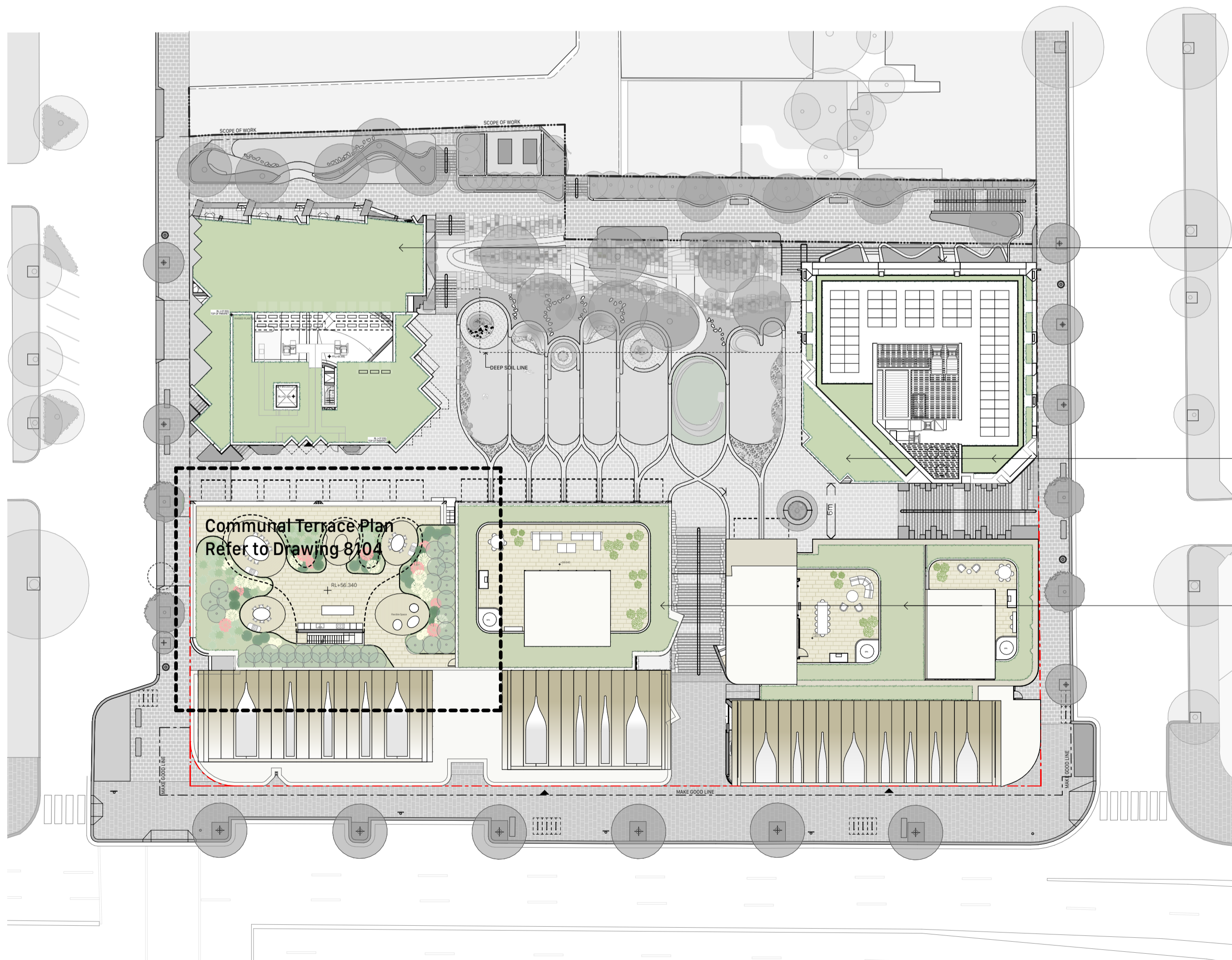
- All dimensions and existing conditions shall be checked and verified by the contractor before proceeding with the work.
- All levels relative to 'Australian Height Datum'.
- Do not scale drawings.
- Use figured dimensions only.

Legend

- - - SITE BOUNDARY
- + RL.XXXX PROPOSED LEVELS
- PAV7- STONE PAVING
- TD1- TIMBER DECKING
- BNCH4- INTEGRATED TIMBER SEATING
- PLB1- PLANTER BOX
- MASS PLANTING
- LARGE SHRUBS



1 PLAN William West Level 09 Communal Terrace
1:100



2 PLAN Combined Landscaped roof plan
1:400

Rev	Date	Description	By	Chk
1	28/8/2025	for SSDA Approval	KY	
01	13/8/2025	Issued for SSDA	MZ	

164-172 and 174-194 William St
Australia
164-172 and 174-194 William St
Woolloomooloo NSW 2011

Landscape Plans Scale
Communal Terrace & Landscaped 1:100 @ A1
Roof Plan

Project Code First Issued
H180W 28/8/2025

Sheet No. Rev
8104 1

General notes
 - All dimensions and existing conditions shall be checked and verified by the contractor before proceeding with the work.
 - All levels relative to 'Australian Height Datum'.
 - Do not scale drawings.
 - Use figured dimensions only.

Legend



1 SECTION North South Section
1:100



2 SECTION East West Park Section
1:100

1	28/8/2025	for SSDA Approval	KY
01	13/8/2025	Issued for SSDA	MZ

Rev	Date	Description	By	Chk
-----	------	-------------	----	-----

164-172 and 174-194 William St
 Australia
 164-172 and 174-194 William St
 Woolloomooloo NSW 2011

Landscape Sections Scale
 Sections 1:100 @ A1

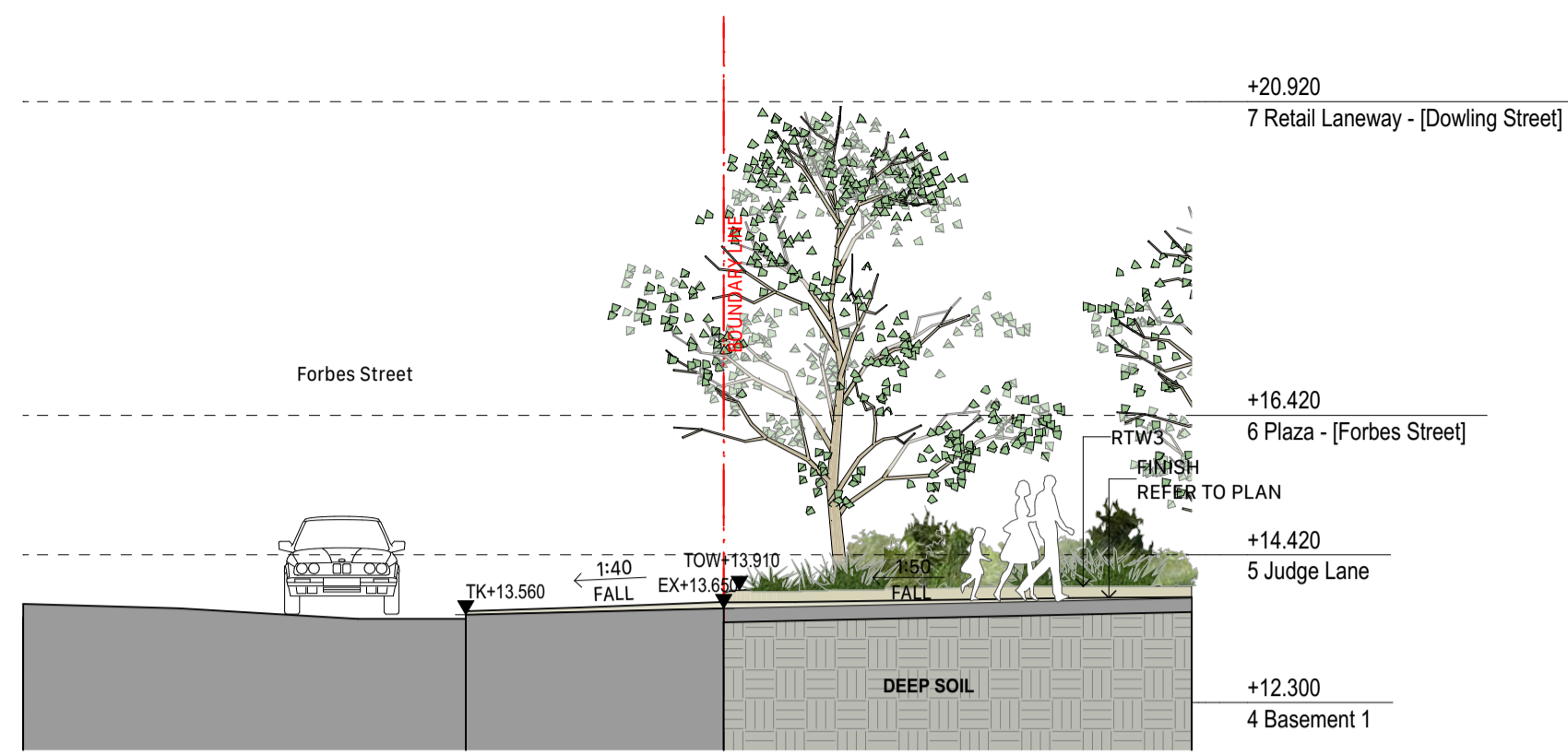
Project Code First Issued
 H180W 28/8/2025

Sheet No. Rev
 8200 1

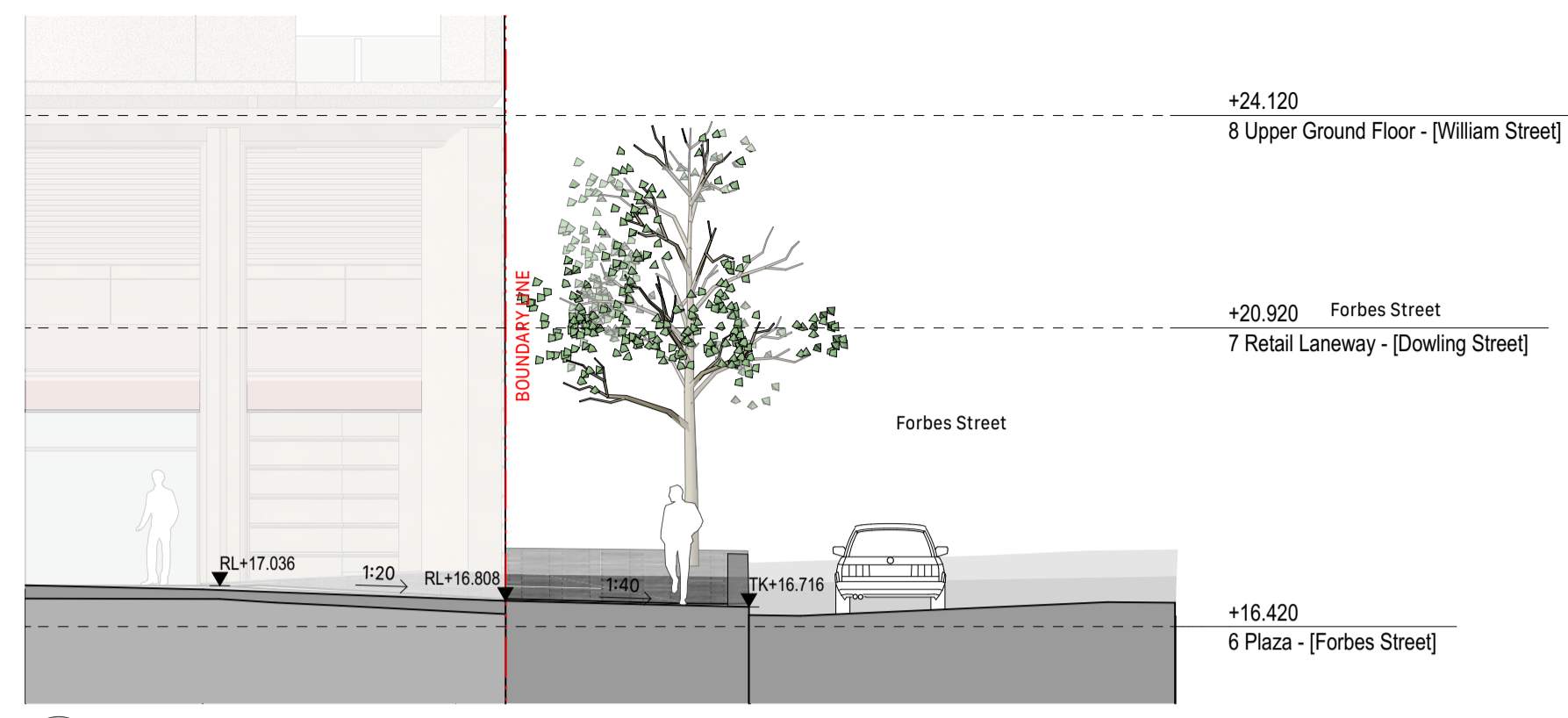
General notes

- All dimensions and existing conditions shall be checked and verified by the contractor before proceeding with the work.
- All levels relative to 'Australian Height Datum'.
- Do not scale drawings.
- Use figured dimensions only.

Legend



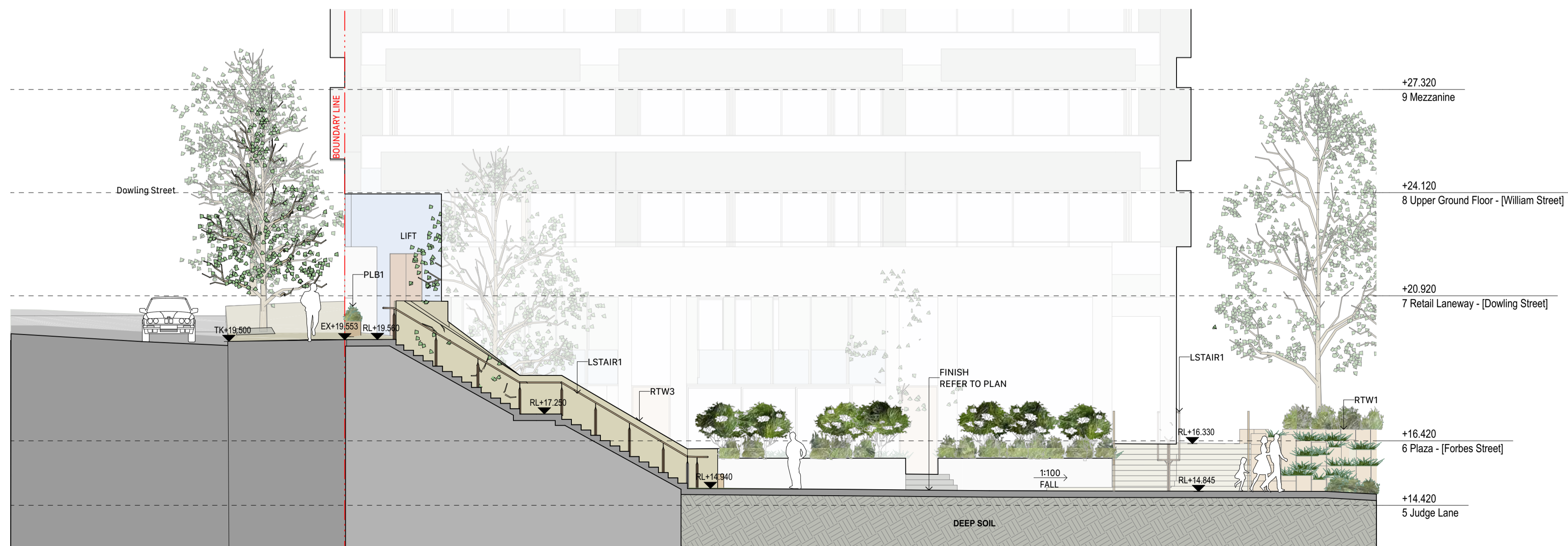
1 SECTION Judge Lane Entry
1:100



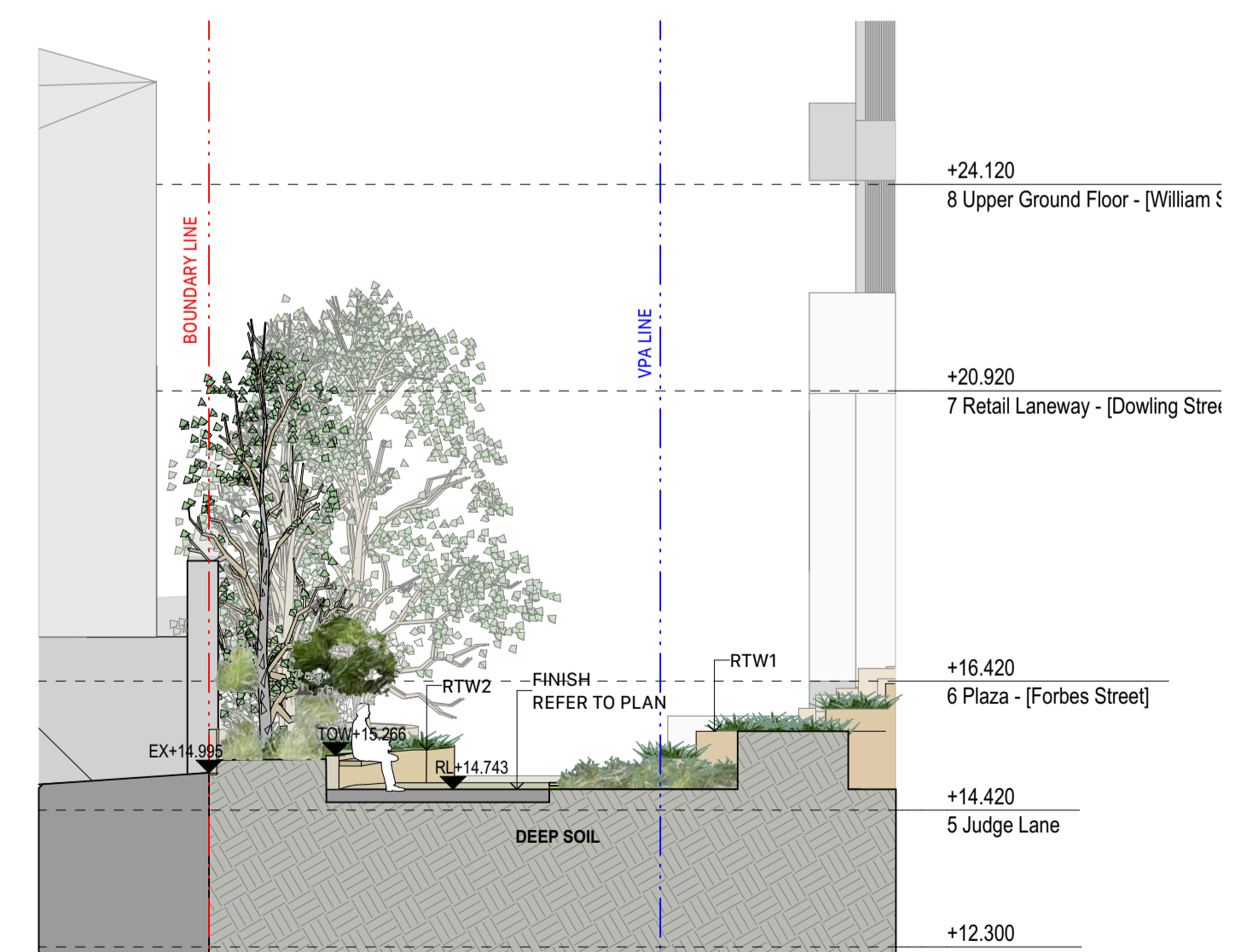
2 SECTION Forbes Street Entry
1:100



3 SECTION Dowling Street South Stair Entry
1:100



4 SECTION Dowling Street Stair Entry
1:100



5 SECTION VPA/Escarpment Interface
1:100

Rev	Date	Description	By	Chk
1	28/8/2025	for SSDA Approval	KY	
01	13/8/2025	Issued for SSDA	MZ	

164-172 and 174-194 William St
Australia
164-172 and 174-194 William St
Woolloomooloo NSW 2011

Landscape Sections Scale
Street Interface Sections 1:100 @ A1

Project Code H180W **First Issued** 28/8/2025

Sheet No. 8201 **Rev** 1