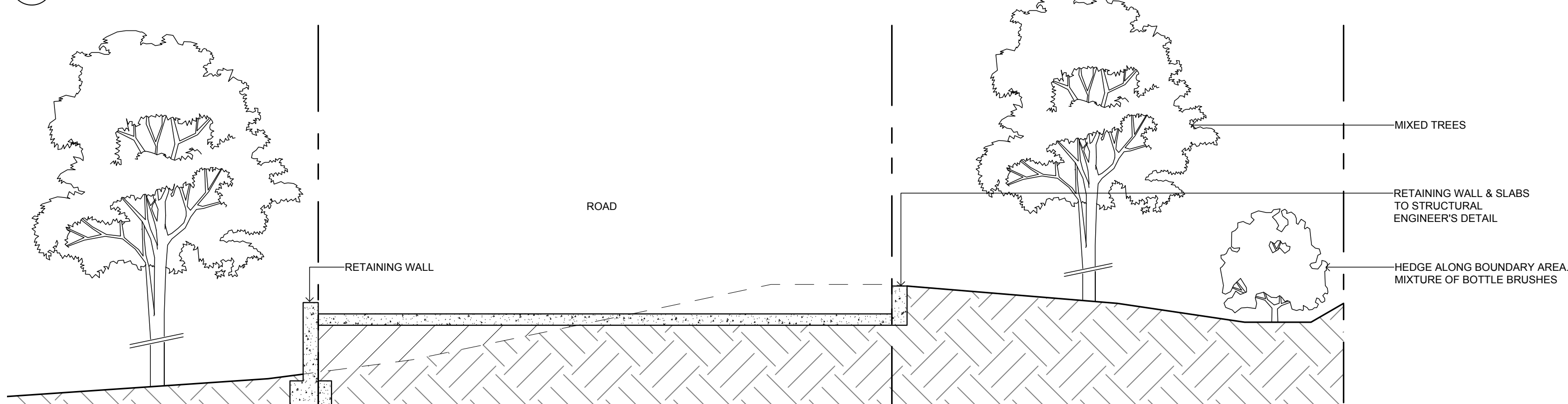




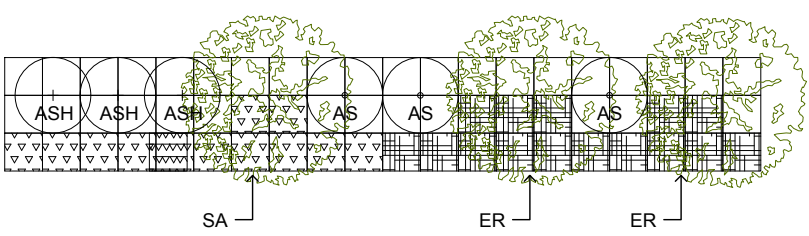
01 MAINTENANCE SHED AND CARPARK LANDSCAPE PLAN
1:200 @ A1



02 MASS PLANTING DETAIL
1:20 @ A1

SYM	BOTANICAL NAME	MATURE HEIGHT AND SPREAD	SPACING	POT SIZE	STAKING	QTY
BOUNDARY HEDGE						
CW	Callistemon Wildfire	4m x 2m	AS SHOWN	150mm	N/A	
CP	Callistemon Purple Cloud	2m x 2m	AS SHOWN	150mm	N/A	
CHP	Callistemon Hot Pink	1.5m x 1m	AS SHOWN	150mm	N/A	
CCG	Callistemon Candle Grow	0.6m x 2.5m	AS SHOWN	150mm	N/A	
MIXED TREES						
ML	Melaleuca Linarifolia	10m x 8m	AS SHOWN	25 LITRE	2 x 50 x 50 x 1800	
SG	Syncarpia Glomulifera (Turpentine)	25m high	AS SHOWN	25 LITRE	2 x 50 x 50 x 1800	
GB	Eucalyptus Moluccana (Grey Box)	25m high	AS SHOWN	25 LITRE	2 x 50 x 50 x 1800	
CK	Callistemon 'King's Park Special'	6m x 2m	AS SHOWN	25 LITRE	2 x 50 x 50 x 1800	
GROUND COVER						
BVD	Babingtonia (Baeckea Virgata Dwarf)	0.3m x 0.5m	6 PER M ²	VIRO-TUBE	N/A	
VD	Virgata Dwarf	0.3m x 0.5m	6 PER M ²	VIRO-TUBE	N/A	
DC	Dianella Caerulea (Little Jess)	0.4m x 0.6m	4 PER M ²	VIRO-TUBE	N/A	
GY	Gazania Yellow	0.2m x 0.3m	15 PER M ²	VIRO-TUBE	N/A	
CG	Carpobrotus Glaucescens (Aussie Rambler)	0.3m x 2m	1 PER M ²	VIRO-TUBE	N/A	
HV	Hardenbergia Violacea (Meema)	0.6m x 2m	1 PER M ²	VIRO-TUBE	N/A	
GB	Westringia Fruticosa 'Grey Box'	0.6m x 0.6m	1 PER M ²	VIRO-TUBE	N/A	
Mu	Westringia Fruticosa 'Mundi'	0.6m x 2m	1 PER M ²	VIRO-TUBE	N/A	
GRASSES						
KD	Poa Poiformis (King Dale)	0.45m x 0.4m	4 PER M ²	VIRO-TUBE	N/A	
Co	Poa Poiformis (Courtney)	0.5m x 0.2m	10 PER M ²	VIRO-TUBE	N/A	
BANKSIAS						
BS	Banksia Spinulosa (Hairpin)	<0.5m x <0.5m	4 PER M ²	VIRO-TUBE	N/A	
GRASSES						
DB	Dianella 'Breeze'	1m x 2m	1 PER M ²	VIRO-TUBE	N/A	
LD	Lomandra Longifolia (Tanika)	0.6m x 0.6m	1 PER M ²	VIRO-TUBE	N/A	
LCW	Lomandra Confertifolia (Wingarra)	0.3m x <0.3m	9 PER M ²	VIRO-TUBE	N/A	
MELALEUCAS						
MB	Melaleuca Bracteata	5m x 3m	AS SHOWN	150mm	N/A	

03 PLANT SCHEDULE
N/A @ A1



SYM	BOTANICAL NAME	SQM	SPACING	QTY
SMALL TREES				
ER	Elaeocarpus reticulatus	-	AS SHOWN	2
SA	Syzgium australe 'Southern Form'	-	AS SHOWN	1
SHRUBS				
ASH	Acmena smithii 'Hedgemaster'	-	AS SHOWN	3
AS	Acmena smithii 'Lilly Pilly'	-	AS SHOWN	3
NATIVE GRASSES AND GROUND COVER				
Db	Dianella 'breeze'	12	AS SHOWN	48
Lt	Lomandra tanika	15	AS SHOWN	60

04 ROAD BORDER DETAIL AND SCHEDULE
N/A @ A1

GENERAL NOTES

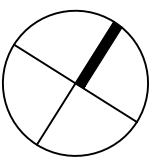
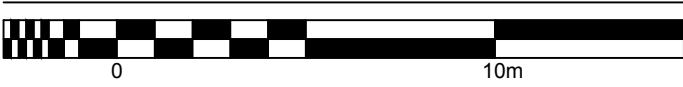
DO NOT SCALE FROM THIS DRAWING

CONFIRM ALL DIMENSIONS AND SETOUTS ON SITE PRIOR TO MANUFACTURE & INSTALLATION

ALL WORK IN ACCORDANCE WITH RELEVANT AUSTRALIAN STANDARDS

TO BE READ IN CONJUNCTION WITH ENGINEERS DOCUMENTS

LEGEND



- EXISTING TURF & SOFT LANDSCAPING ZONES
- PROPOSED TURF
- PROPOSED SOFT LANDSCAPING
- PROPOSED SOFTFALL
- PROPOSED HARD LANDSCAPING
- EXISTING BUILT FORM AND ROADS
- EXISTING BUILDINGS
- EXISTING GRAVEL ROAD
- PROPOSED ROADWAY
- METAL DECK ROOFING
- POLYCARBONATE ROOFING
- LIGHTWEIGHT
- GLAZING
- BRICK FACE
- EXISTING TREES
- PROPOSED TREES

01 25.07.17
SSDA SUBMISSION

Rev Date Description
sydney Level 2, 79 Myrtle St
Chippendale 2008
Nominated Architect: Gerard Reinmuth 6629
T 02 9279 2226
F 02 9279 2227

hobart 181 Elizabeth St
Hobart 7000
Nominated Architect: Scott Balmforth 564
T 03 6234 6372
F 03 6231 4939

TERROIR

Project:
ROUSE HILL ANGLICAN COLLEGE
MASTERPLAN 2016

Drawing Description:
PROPOSED JUNIOR SCHOOL
LANDSCAPE PLAN AND DETAILS
BLOCK M AND BIKE SHED

Drawn by: CY Checked by: TD Scale: N/A @A1

PROJECT NO: DWG NO: REV NO:
14301 MP-JS-40-03 01

Drawing Status: SSDA