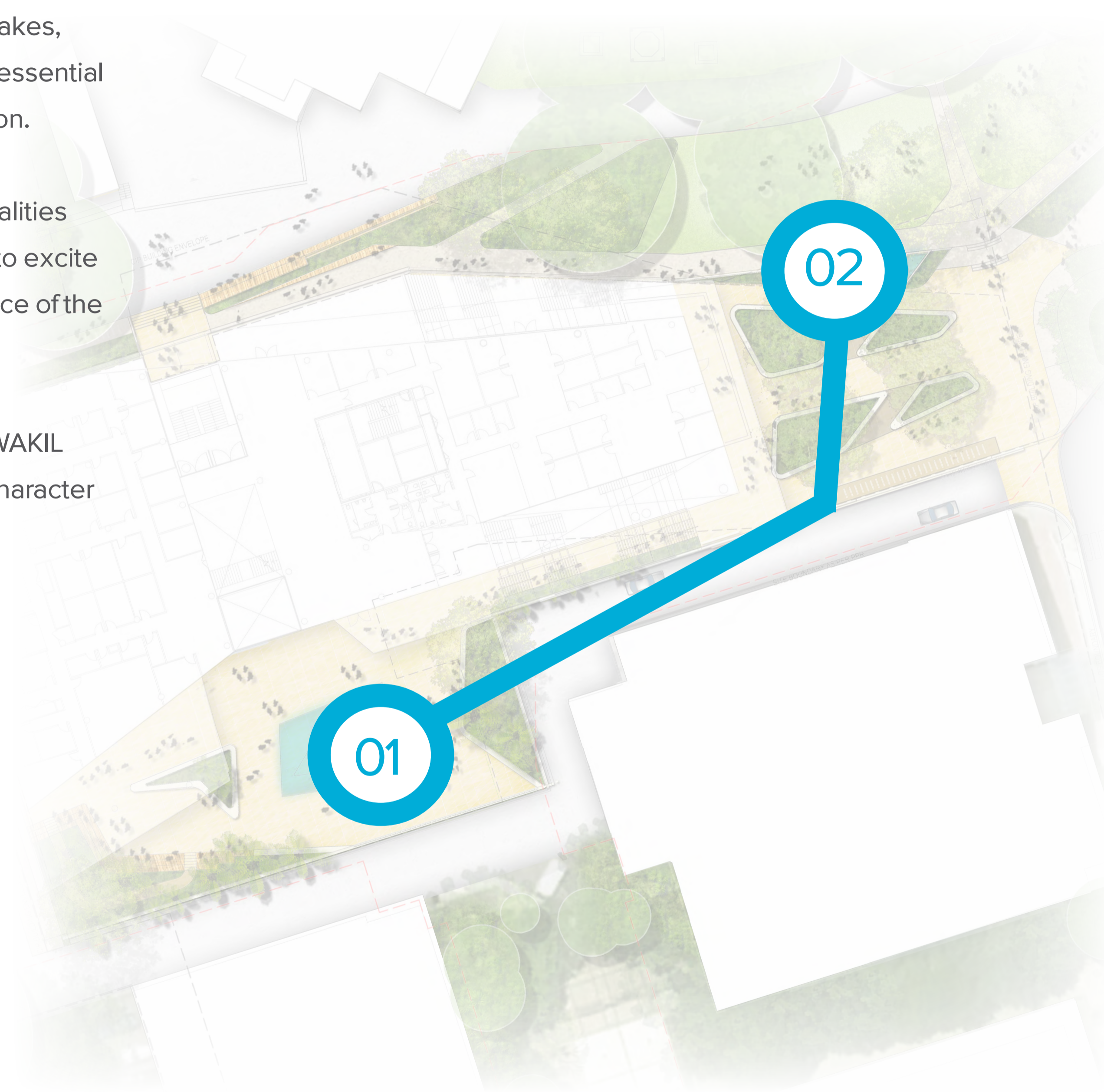


3.18 DESIGN RESPONSE_WATER- ENGAGING THE SENSES

From the earliest times, bodies of water – lakes, seas, rivers and streams – have played an essential role in the development of human civilisation.

Water is to be embraced for its inherent qualities and presented in multiple forms, destined to excite ALL the senses and enhance the experience of the spaces.

At once Connecting the upper and lower WAKIL terraces while also providing contrasting character and definition of these spaces.



UPPER WAKIL GARDEN :
SENSE: SIGHT
WATER SKIM



GARDEN ESCARPMENT :
SENSE: HEAR
FALLING WATER

4.1 MATERIALITY_MATERIAL STRATEGY

EDGES



PAVING



DESCRIPTION

The materiality has been derived from the Sydney Landscape. Sandstone, timber and water are utilised elements we have integrated into the landscape strategy.

The walling and edging has been designed to curve like the natural topography of the Sydney mountain ranges. Sculpted planter edges will take on this form, diving out of the ground to form garden edges. The steps will reflect the stone palette and marry in with natural edges to resemble the crevices and narrow openings found in the Sydney bushland. This same colour scheme will blend into the paving, taking on a tessellated pattern in some locations, matching that of the folded landscape.

Landscape terracing has been introduced to mimic the steep topography and sandstone benching which occurs naturally in the Sydney Bush. These curving terrace elements will sit within the natural landform, breaking down the edge and providing a seating platform.

4.2 MATERIALITY_MATERIAL STRATEGY

TIMBER



WATER

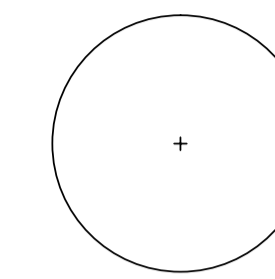
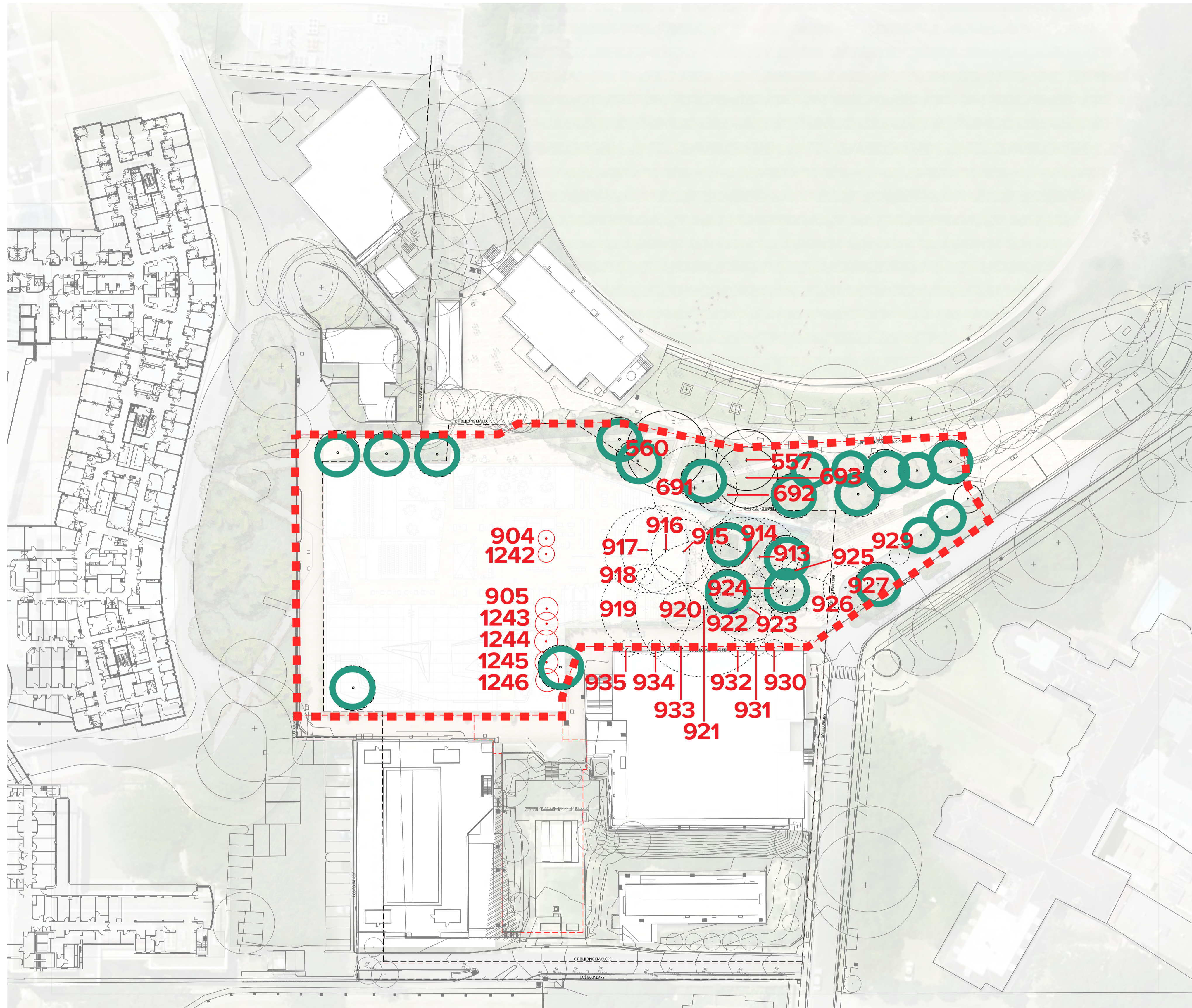


DESCRIPTION

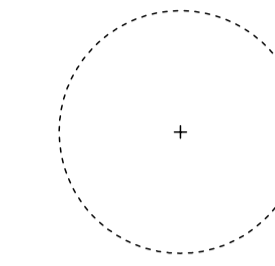
Landscape terracing has been introduced to mimic the steep topography and sandstone benching which occurs naturally in the Sydney Bush. These curving terrace elements will be clad and sit within the natural landform, breaking down the edge and providing a seating platform.

Folding timber terracing has been incorporated as a reinterpretation of the large native trees often found nestled along the Sydney ridge-lines and mountain ranges.

5.1 PLANTING DESIGN_VEGETATION MANAGEMENT PLAN

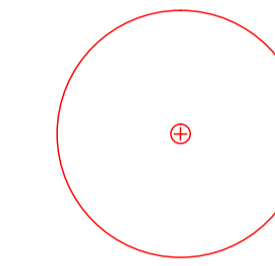


TREES TO BE RETAINED (4)

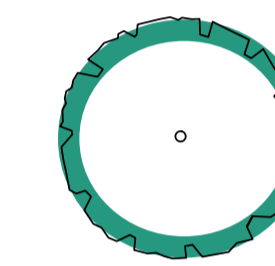


TREES TO BE REMOVED (24)

Exotic: *Platanus x acerifolia* , Native: *Ficus Sp.*



TREES APPROVED FOR REMOVAL AS PART OF REF. (7)



PROPOSED TREES (22)

Native: *Angophora costata*

Native: *Banksia integrifolia*

Native: *Corymbia gummifera*

Native: *Eucalyptus resinifera*

Native: *Eucalyptus punctata*

Native: *Eucalyptus saligna*

Native: *Ficus microcarpa 'Hillii'*

925

TREE NUMBERS
As per Arborists Report

0 10 20 30 40 50m
SCALE 1:500 @ A1

