

Archival photographic heritage recording Blackburn Building, University of Sydney



Take E.07

Heritage Branch NSW Department of Environment & Heritage / City of Sydney
Campus Infrastructure Services Project: Blackburn Building D06
Heritagephotos Pty Ltd / August, September 2017

Archival photographic heritage recording Blackburn Building, University of Sydney

Methodology & photographer's notes

This has been a Campus Infrastructure Services Project D06, Blackburn Building.

BLACKBURN BUILDING

"The building was designed as a hollow rectangle. The centre is filled in and is octagonal in shape, with a light filled courtyard on either side. I walked through the connecting passage from the entrance to the rear of the building and in the centre the octagonal shape is still recognisable. In the original design, the library and pathology museum occupied the higher levels of this octagonal in-fill. These spaces were double storey and supported by 2 concentric rows of pillars (16 in all); the top of each pillar highly decorative in art deco style. Over the years there have been many renovations and redesigns including the division of these larger spaces by dividing the double storey to create much needed office, laboratory and additional museum space. The pillars are now truncated and the decorative tops evident on levels 4 and 6." (Quote from Catherine E. Storey OAM) Including the basement Level 1, the Blackburn Building has 7 levels. There was no access to Level 1, which in fact was documented some years ago. There were 3 hard copies made at the time, so it should be available. On Level 7, I had restricted access but managed 4 Takes. Floors 2-7 are covered in 235 Takes. With 84 Takes around the exterior, there are 319 Takes in this recording.

EXTERIOR TAKES

Throughout the exterior Takes, my method was to take an overall view first, then a closer detail, a section of the wall and a natural design module within the facade, then smaller detail such as a window or door, such that typical parts of the building were covered. In this way, I photographed the slate clad exterior Level 7, the fine brickwork, windows, doors, the main entrance, side driveway and the building at ground level right round. I moved anticlockwise around the building from the loop drive to the east, around the north side of the Blackburn Building past the Chapel, around the west side next to the Hospital and then the south side next to and from the Bosch Building. In fact, the east elevation is the only whole elevation visible and Takes E.01, E.06 & E.07 are 3 views of the east elevation, but note Take E.06 is crafted by eye, compounded from 28 takes.

To the south, the Bosch 1b building, is connected by a 2level walkway. See Takes E.63 to E.69. A view of the north elevation was hidden by Cyprus pines (Take E.30) and the west too it was blocked, by trees and the hospital on the ground, but there was a high view from the roof of the hospital, neighbour to the west.

The sequence is exterior takes right around the building, prefixed with E.

INTERIOR TAKES

Internal documentation is floor by floor, 2 to 7, each floor prefixed with the floor number, then the 2digit take sequence number.

Within the building, I took photographs to document original and typical passages, landings, rooms, laboratories, windows, doors, furniture, fittings and signage. I worked floor by floor, from 2 to 7. In each case I begin at the entrance or the front stairs landing and generally move clockwise around the floor to the rear, 'students' stairs, and continue around the main circular passage. I then documented the connecting passage, the central space, with the vertical pillars at their base on Level 2 through their tops on Level 6. Because of its importance, I documented the entrance in detail, the surround, the arch leadlight, the doors, the Attendant box. Particular people and special rooms were requested. I photographed Professor Sullivan, Head of the David Read Sleep Laboratory, Sleep Disorders, Respiratory Medicine, Discipline of Medicine, Room 450 where the sleep disorder equipment was developed. I photographed several component rooms within the wing. I photographed Professor Macdonald Christie, NHMRC Senior Principle Research Fellow, Professor of Neuropharmacology, Room 350. I photographed Dr Rita Machaalani, Clinical Lecturer, Central Clinical School, the Bosch Institute, in Room 206. I documented the site of the original lecture theatre over 2 levels, Laboratory 425. In 1966, this space was divided and used as a demonstration room, it is one of the few large demonstration rooms left in the building and I photographed Laboratory 625, now labelled 'Practical Bacteriology', but also an original demonstration laboratory for student teaching. I photographed Room 476, Professor Blackburn's office in 1971. I also documented the Room 604, very original, and one of the original Professors offices and the only one which retains the original inbuilt benches and has original flued gas heater.

TECHNICAL NOTES

Re file naming, take numbers are all Exterior or Floor first, then the sequential take number. ie E.01 through E.84 for external work, then 2.01 through 7.04 up through the floors internally. The 2 light wells are included in the exterior takes. Many doors were taped up so access was restricted in photographing every wall of every light well. I could not achieve this for the south light well. I used a Nikon D4 camera with 46mb, SRGB tiff file & 100asa. The files are 8bit saved in Adobe RGB 1998 as tiff for BM. All takes are from tripod with camera set at mirror up triggered by electronic pulse. I used all Carl Zeiss ZFI & ZF2 Distagon & Planar prime lenses for their extreme sharpness & quality: 18mm f3.5, 25mm f2, 28mm f2, 35mm f2, 50mm f1.4, 100mm Macro Planar f2. The recording, print, paper & slip case binders are archival by Albox in South Australia. All the pages with photographs, the title page and display proofs, are printed with archival Epson K3 inks on 192gsm Archival Matte Paper. Type pages are German UPM DIGICOLOR colour laser 120gsm & scale plans the same, printed Epson archival with 81N dye base inks. All the clear, archival 90micron polypropylene sleeves, both A4 & for the discs, the charcoal case covers and the labels are archival. The discs are Taiyo Yuden DVD-R, best available quality, recorded with Toast Titanium and verified.

David Liddle Heritagephotos Pty Ltd, September 2017

Display proofs Exterior Takes E.1



Take E.01



Take E.02



Take E.03



Take E.04



Take E.05



Take E.07



Take E.08



Take E.09



Take E.10

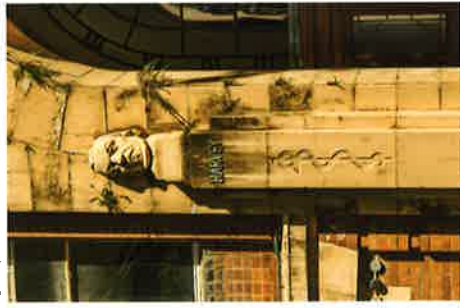


Take E.11



Take E.12

Display proofs Exterior Takes E.2



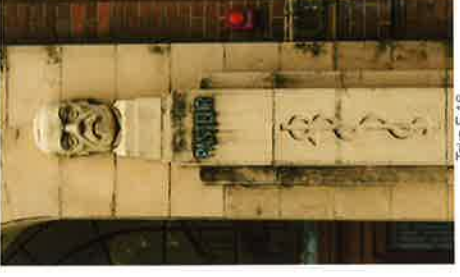
Take E.13



Take E.14



Take E.15



Take E.16



Take E.17



Take E.18



Take E.19



Take E.20



Take E.21



Take E.22



Take E.23



Take E.24

Display proofs Exterior Takes E.3



Take E.25



Take E.26



Take E.27



Take E.28



Take E.29



Take E.30



Take E.31



Take E.32



Take E.34



Take E.35



Take E.33

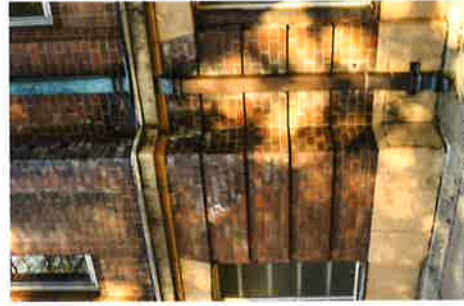


Take E.36

Display proofs Exterior Takes E.4



Take E.37



Take E.38



Take E.39



Take E.40



Take E.41



Take E.43



Take E.44



Take E.45



Take E.42



Take E.47



Take E.48

Display proofs Exterior Takes E.5



Take E.49



Take E.53



Take E.50



Take E.51



Take E.55



Take E.59



Take E.52



Take E.56



Take E.58



Take E.54



Take E.57

Display proofs Exterior Takes E.6



Take E.62



Take E.61



Take E.66



Take E.70



Take E.64



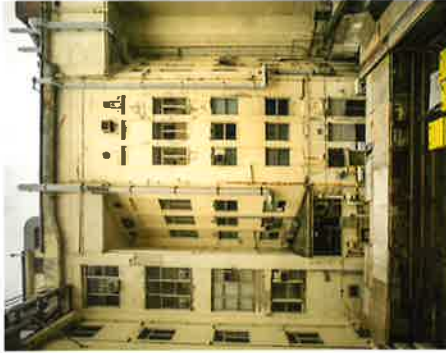
Take E.63



Take E.67



Take E.68



Take E.71



Take E.69



Take E.72

Display proofs Exterior Takes E.7



Take E.73



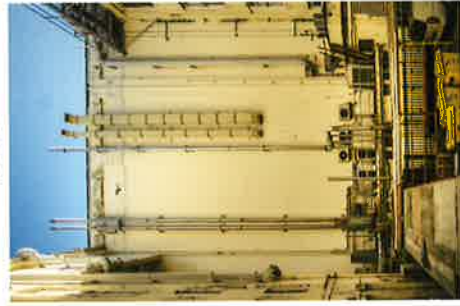
Take E.74



Take E.75



Take E.76



Take E.77



Take E.78



Take E.79



Take E.80



Take E.81



Take E.82



Take E.83



Take E.84

Display proofs Level 2 interiors 2.1



Take 2.01



Take 2.02



Take 2.05



Take 2.06



Take 2.03



Take 2.04



Take 2.08



Take 2.09



Take 2.10



Take 2.11

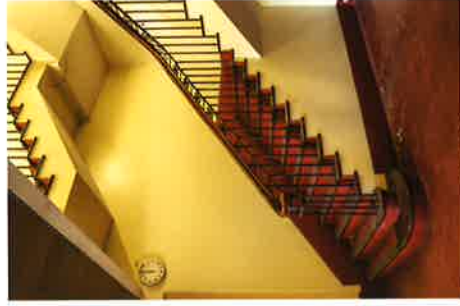


Take 2.12

Display proofs Level 2 interiors 2.2



Take 2.13



Take 2.14



Take 2.15



Take 2.16



Take 2.17



Take 2.18



Take 2.19



Take 2.20



Take 2.21



Take 2.22



Take 2.23



Take 2.24

Display proofs Level 2 interiors 2.3



Take 2.25



Take 2.29



Take 2.33



Take 2.26



Take 2.30



Take 2.34



Take 2.27



Take 2.31



Take 2.35



Take 2.28



Take 2.32



Take 2.36

Display proofs Level 2 interiors 2.4



Take 2.37



Take 2.38



Take 2.39



Take 2.40



Take 2.41



Take 2.42



Take 2.43



Take 2.44



Take 2.46



Take 2.47



Take 2.45



Take 2.48

Display proofs Level 2 interiors 2.5



Take 2.49



Take 2.50



Take 2.54



Take 2.51



Take 2.52



Take 2.53

Display proofs Level interiors 3.1



Take 3.01



Take 3.02



Take 3.03



Take 3.04



Take 3.05



Take 3.06



Take 3.08



Take 3.09



Take 3.10



Take 3.11



Take 3.12

Display proofs Level 3 interiors 3.2



Take 3.13



Take 3.15



Take 3.16



Take 3.14



Take 3.19



Take 3.20



Take 3.17



Take 3.22



Take 3.21



Take 3.23



Take 3.24

Display proofs Level 3 interiors 3.3



Take 3.25



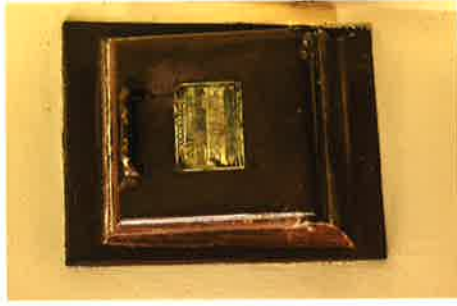
Take 3.26



Take 3.27



Take 3.28



Take 3.29



Take 3.30



Take 3.31



Take 3.32



Take 3.33



Take 3.34



Take 3.35



Take 3.36

Display proofs 3 Level interiors 3.4



Take 3.37



Take 3.38



Take 3.39



Take 3.40



Take 3.41



Take 3.42



Take 3.43



Take 3.44



Take 3.46



Take 3.47



Take 3.45

Display proofs Level 4 interiors 4.1



Take 4.01



Take 4.02



Take 4.03



Take 4.04



Take 4.07



Take 4.08



Take 4.05



Take 4.06



Take 4.11



Take 4.12

Display proofs Level 4 interiors 4.2



Take 4.13



Take 4.14



Take 4.15



Take 4.16



Take 4.17



Take 4.18



Take 4.19



Take 4.20



Take 4.21



Take 4.22



Take 4.23



Take 4.24

Display proofs Level 4 interiors 4.3



Take 4.25



Take 4.26



Take 4.27



Take 4.28



Take 4.29



Take 4.30



Take 4.31



Take 4.32



Take 4.33



Take 4.34



Take 4.35



Take 4.36

Display proofs Level 4 interiors 4.4



Take 4.37



Take 4.38



Take 4.39



Take 4.40



Take 4.37



Take 4.38



Take 4.39



Take 4.41



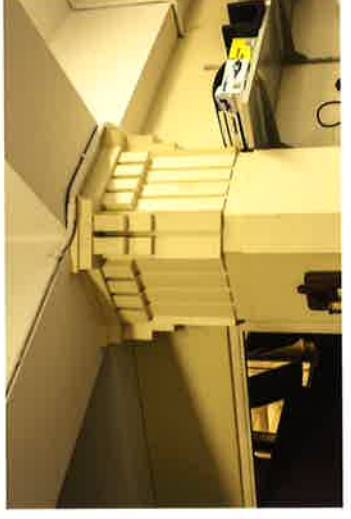
Take 4.45



Take 4.46



Take 4.43



Take 4.48

Display proofs 4 Level interiors 4.5



Take 4.49



Take 4.50



Take 4.51



Take 4.52

Display proofs Level 5 interiors 5.1



Take 05



Take 5.01



Take 5.02



Take 5.03

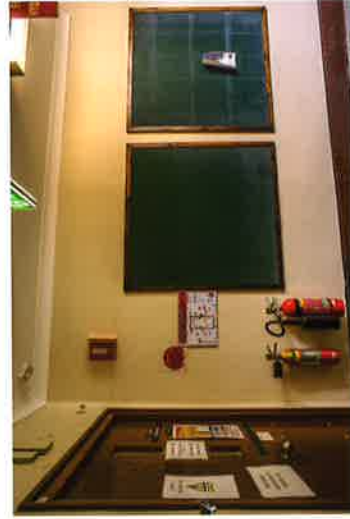


Take 5.04



Take 5.08

Take 5.05



Take 5.09

Take 5.06



Take 5.10

Take 5.07



Take 5.11