

Display proofs Level 5 interiors 5.2



Take 5.12



Take 5.13



Take 5.17



Take 5.16



Take 5.14



Take 5.18



Take 5.22



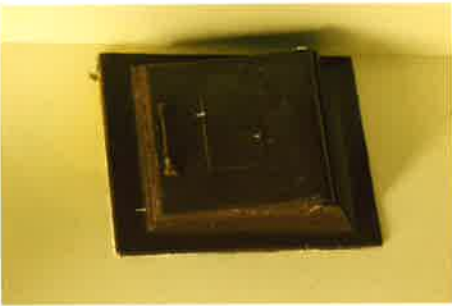
Take 5.21



Take 5.20



Take 5.15



Take 5.19



Take 5.23

Display proofs Level 5 interiors 5.3



Take 5.24



Take 5.25



Take 5.26



Take 5.27



Take 5.30



Take 5.29



Take 5.28



Take 5.31



Take 5.32



Take 5.33



Take 5.34



Take 5.35

Display proofs Level 6 interiors 6.1



Take 6.01



Take 6.02



Take 6.03



Take 6.04



Take 6.05



Take 6.06



Take 6.07



Take 6.08



Take 6.09



Take 6.10



Take 6.11



Take 6.12

Display proofs Level 6 interiors 6.2



Take 6.13



Take 6.14



Take 6.15



Take 6.16



Take 6.18



Take 6.19



Take 6.17



Take 6.20



Take 6.23



Take 6.24



Take 6.22



Take 6.21

Display proofs Level 6 interiors 6.3



Take 6.25



Take 6.26



Take 6.27



Take 6.28



Take 6.29



Take 6.30



Take 6.31

Take 6.32



Take 6.33



Take 6.35



Take 6.34



Take 6.36

Display proofs Levels 6 & 7 interiors 6.4



Take 6.37



Take 6.38



Take 6.39



Take 6.40



Take 6.41



Take 6.42



Take 7.03



Take 7.01



Take 7.02

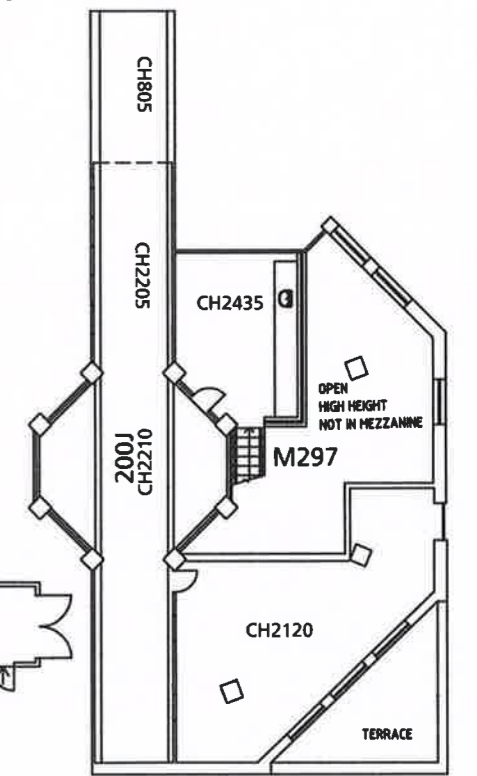
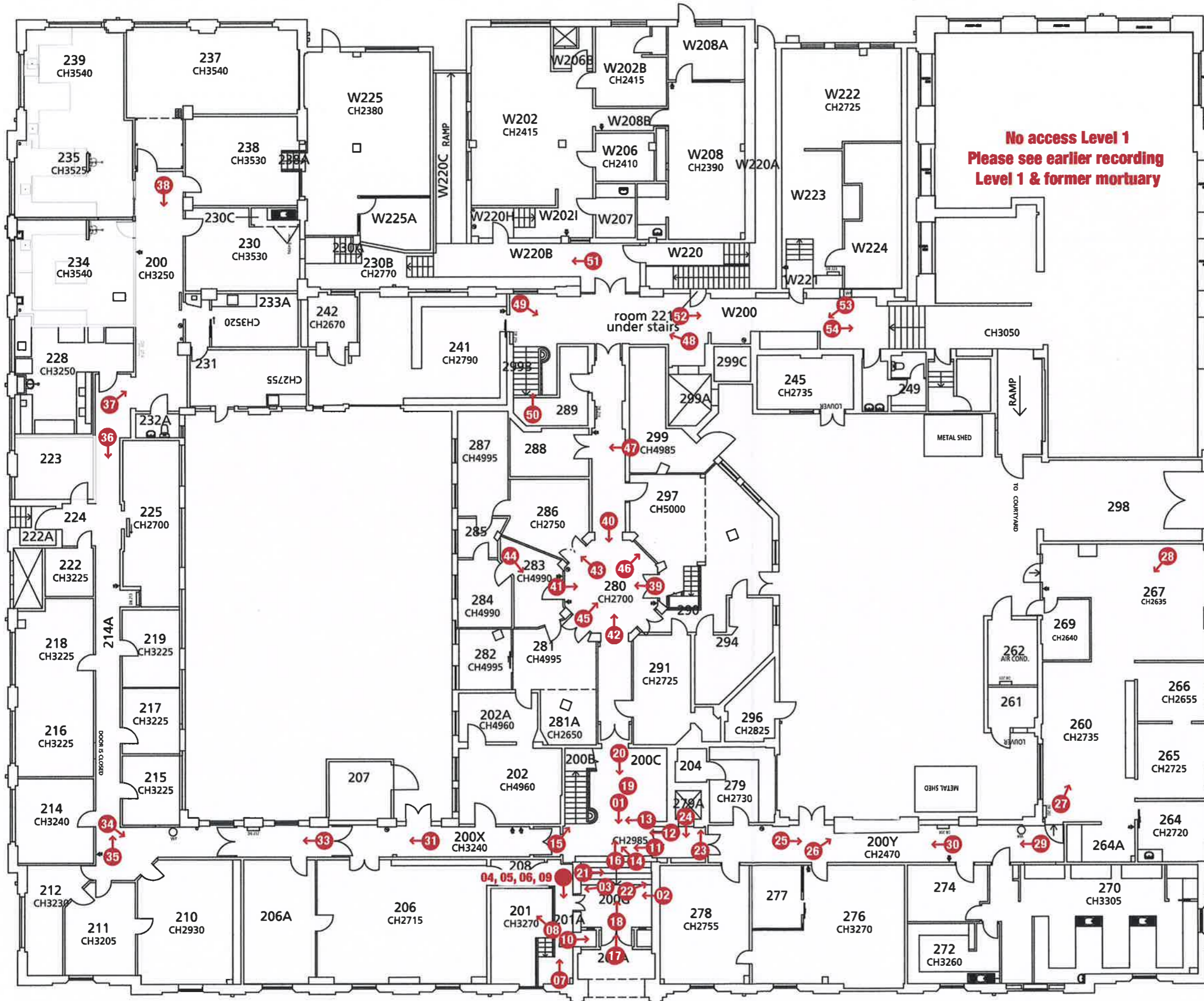


Take 7.04

Scale plan of takes Level 2, Takes 2.01 to 2.54

THE UNIVERSITY OF SYDNEY
 CAMPUS INFRASTRUCTURE SERVICES
 SERVICES BUILDING G12
 TEL (02)9351-6865 FAX (02)9351-6489

REV.	DATE	DRAWN BY
A	16/06/99	GG
B	19/01/00	LC
C	13/12/00	SS
D	23/02/01	LC
E	16/03/01	BG
F	14/03/02	SS
G	04/05/06	S.PATIL
H	19.08.2008	MT



MEZZANINE LEVEL BETWEEN LVL. 2 & 3

BLACKBURN BUILDING D06

Level 2
 Measured Drawings

Drawn By : MC	Checked By : G.Gabriel
Scale : 1:200	Date Printed : 26 SEP 03
CAD File Name : M:\dwg\camp\med\D06\l-arch\L02-la3.dwg	

NOTE :
 1> INDICATIVE DRAWING ONLY.
 2> DO NOT SCALE OFF THIS DRAWING.
 3> SCALE AND DATE PRINTED DO NOT APPLY TO DWG FILES.

For want of space within the arrow heads, only the last 2 digits of the Take Numbers is shown on arrows. The full number of all Takes on Level 2 begin with 2. + last 2 digits.

0mm

100mm

200mm

300mm

Scale Plan
Level 4
Takes
4.01 to 4.52

100mm

200mm



project:
**BLACKBURN BUILDING
D06**

title:
**FLOOR PLAN
LEVEL 04**

date: 19th July '10 drawing no: A-D06-L04

scale: 1 : 200 rev: -

Campus Infrastructure Services - tel. 02 9351 7838
www.sydney.edu.au/facilities/



Due to size of the arrowheads, only the last 2 digits of Take Numbers are shown in the arrows. The full Take Number is 4.+ 1st 2 digits.

CAD FILE:M:\dwg\camp\med\D06lb-archA-D06-L04.dwg

UPDATED:Friday, May 21, 2010 4:41:22 PM

Scale Plan of Takes 6.01 to 6.43, Level 6

THE UNIVERSITY OF SYDNEY		
CAMPUS INFRASTRUCTURE SERVICES		
SERVICES BUILDING G12		
TEL (02)9351-6865 FAX (02)9351-6489		
REV.	DATE	DRAWN BY
A	13/12/00	SS
B	14/03/02	SS
C	03/07/03	H.DOLOI
D	04/05/06	S.PATIL
E	19.08.08	MT



BLACKBURN BUILDING	
D06	
Level 6	
Measured Drawings	
Drawn By : MC	Checked By : G.GABRIEL
Scale : 1:200	Date Printed : 09/05/2007
CAD File Name :	
M:\dwg\camp\med\D06\p-arch\l.06-1a3.dwg	
NOTE :	
1> INDICATIVE DRAWING ONLY.	
2> DO NOT SCALE OFF THIS DRAWING.	
3> SCALE AND DATE PRINTED DO NOT APPLY TO DWG FILES.	

Due to size of arrowheads, only the last 2 digits show on arrows. The full Take Number is 6.+last 2 digits.

Archival photographic heritage recording Blackburn Building G12, University of Sydney

Catalogue of Takes

Take	File	Direction	Lens	Showing
EXTERIOR TAKES – CLOCKWISE FROM SOUTH EAST				
E.01	4197	NW	18mm	Whole eastern façade Blackburn Building, trees in front
E.02	4194	W	35mm	Southernmost vertical panel of Blackburn Building, windows, brick pilaster
E.03	4185	W	100mm	Detail Level 7 exterior slate & brick treatment, windows
E.04	4192	W	50mm	Detail southern 'brick & triple window' panel
E.05	4189	W/up	100mm	Detail ornate period art deco brickwork, triple window panel, brick columns, brick pilaster
E.06	4162-4170	W	18mm	Panorama of eastern elevation Blackburn Building, trees
E.07	4325	W	18mm	East elevation Blackburn Building, plane trees, grass, hedge
E.08	4173	W	35mm	3 central panels of Blackburn in 5 levels, brickwork, triple window panels, entrance arch
E.09	4201	NW	35mm	Entrance arch & surrounds, windows, trees
E.10	4203	W	35mm	Detail stone surround at entrance arch
E.11	4331	W	50mm	Detail stone entrance arch & pedestrian way, leadlight window arch, polished doors
E.12	4281	W	100mm	Detail bronze lettering "Blackburn Building" on stone façade above entrance arch
E.13	4212	W	100mm	Detail stonework south side of entrance arch with sculpture
E.14	4335	W	100mm	Detail stone portrait sculpture HARVEY on southern side of arch
E.15	4212	W	100mm	Detail north side of arch, stonework, sculpture
E.16	4337	W	100mm	Detail stone sculpture PASTEUR north side on entrance
E.17	4560	W	18mm	Detail within arch: arch leadlight window, polished timber joinery of doorway, entrance portico
E.18	4560	W	50mm	Detail stained glass leadlight window in top of entrance arch
E.19	4565	W	100mm	Detail section of lead light window with art deco design in top of arch
E.20	4569	W	50mm	Detail polished timber joinery of doors & doorway in entrance arch
E.21	4584	S	28mm	Detail of doorman's box in south side of entrance portico
E.22	4570	W	100mm	Close detail bronze door furniture, handle & pull ring
E.23	4205	W	35mm	Section of external wall south of entrance, 2X10 pane windows with stone reveal
E.24	4210	W	18mm	Section of wall north side, 2X10 pane windows, triple window above, art deco brickwork
E.25	4223	NW/up	100mm	Typical 'module' Level 7 with brick pilasters, windows, art deco brickwork, copper downpipe
E.26	4176	W	35mm	2 northernmost 'panels' Levels 7 to 3, windows, period brickwork

Take	File	Direction	Lens	Showing
E.27	4226	SW	28mm	Whole Blackburn Building from NE Levels 7 to 3, trees, roadway in front
E.28	4233	SW	28mm	Oblique view of northern façade, trees, road beside
E.29	4179	SW/up	100mm	Detail NE Level 7, slate shingle cladding with compound curve wall, arch triple windows
E.30	4229	S	18mm	View towards Blackburn Building from north, hidden behind large Cyprus pines
E.31	4237	S	25mm	Detail northern façade, 2X10pane windows, triple window recessed in decorative brickwork
E.32	4234	S	28mm	2X10pane windows ground level at road, triple window in decorative brickwork above
E.33	4240	S	25mm	2X10pane window, 1X5pane window, stone cornice & skirting, brick pilaster, downpipe
E.34	4250	S	28mm	Section N façade, columns of single 2pane windows, art deco brickwork copper downpipe
E.35	4254	E	25mm	Along north side of Blackburn Building, roadway, windows, period brickwork
E.36	4387	S	28mm	Driveway entrance to north light well, period brickwork, stone architrave, iron gates
E.37	4260	E	50mm	N side of Blackburn Building, footpath, stone cornice the full length, 2X10pane windows
E.38	4258	SE	50mm	Art deco brickwork, stone cornice & skirting, copper downpipe recessed behind cornice
E.39	4319	SE	28mm	SW corner of Blackburn Building, tree branch, roadway
E.40	4342	SE	18mm	N side of Blackburn Building, footpath, stone cornice the full length, 2X10pane windows
E.41	4344	S	18mm	North western section Blackburn Building, Levels 7 to 3, columnar 'panels' triple windows
E.42	5226	E	18mm	West elevation Blackburn Building & roof from Royal Prince Alfred Hospital roof
E.43	4350	E	18mm	Part of west elevation of building, slate cladding Level 7, brick wall with 3 recessed columns
E.44	4530	E	25mm	Detail at street level, art deco brickwork, stone cornice, 2X10pane window, stone skirting
E.45	4375	NE	50mm	Oblique view of northern wing building from Hospital grounds, Level 7 slate cladding
E.46	4378	E	50mm	Detail west side of building between north & central wings
E.47	4998	N	18mm	External Level 6 walkway for late student access to lecture theatre
E.48	4993	NW	35mm	Detail external L6 student walkway
E.49	4996	NE	35mm	Detail external L6 student walkway
E.50	4441	S	18mm	Brick wall forming recess wall between north & central wings
E.51	4352	E	18mm	Central & southern wings with recess between
E.52	4534	E	25mm	Recess wall at ground level west side of building, windows, stone cornice
E.53	4384	E	18mm	West elevation central wing, 1X windows, shadow of demolished aerial walkway to Hospital
E.54	4537	E	25mm	Central wing at ground level, windows, stone cornice, roadway
E.55	4372	E	18mm	West elevation Blackburn Building, 3 wings, 2 recesses, from Hospital grounds
E.56	4355	E	35mm	Detail building recess between central & southern wings
E.57	5070	W	28mm	North wall of central recess, windows, exhaust stacks, air con units

Take	File	Direction	Lens	Showing
E.58	5067	S	28mm	North wall of southern wing at west side of building, slate cladding L7, triple windows
E.59	4875	SW	28mm	Level 4 view recess between S & central wings, air con units beneath cyan awning, windows
E.60	4359	E	35mm	West elevation of south wing Blackburn Building, slate cladding L7, 3 recess columns in wall
E.61	4365	NE	18mm	West side of building, trees, Hospital grounds
E.62	4368	NE	50mm	South side of building, tree branches
E.63	4398	NE	18mm	South side of building with access concrete driveway, stone cornice, windows
E.64	4396	NW	18mm	Access driveway between Bosch & Blackburn Buildings, windows, copper downpipe
E.65	4393	N	18mm	Concrete skirt cladding, entrance, decorative brickwork, windows
E.66	4390	NW	18mm	Concrete walkways Bosh 1b to Blackburn Buildings, access road, windows
E.67	4406	W	18mm	South side on Blackburn Building, windows, downpipe, decorative period brickwork
E.68	4399	NW	35mm	Link bridge Bosh 1b to Blackburn Building
E.69	4408	N	18mm	2 'panels' within south façade, L7 slate cladding with arch windows, 4 levels of 3X windows
E.70	5237	S	28mm	Roof of Blackburn Building from Hospital roof., slate cladding L7, N & S light wells
EXTERIOR TAKES - NORTH LIGHT WELL				
E.71	4413-14	S	18mm	South wall of north light well, angular curved wall with east & west recess columns
E.72	4310	S	18mm	South wall at ground level inside north light well
E.73	4273	E	18mm	East wall of north light well, single windows all levels
E.74	4313	E	18mm	East wall at ground level inside north light well
E.75	4283-90	N	18mm	North wall of north light well, angular curved wall, triple windows (panorama)
E.76	4313	N	18mm	North wall at ground level, concrete paved area, driveway entrance ramp
E.77	4291	W	28mm	West wall north light well, no windows, exhaust stacks
E.78	4317	W	28mm	West wall at ground level, paved area
EXTERIOR TAKES - SOUTH LIGHT WELL				
E.79	4423	E	18mm	West wall of south light well, 4 top levels of 2X hopper style side-opening windows
E.80	4438	NE	18mm	Intersection west & north walls, windows, exhaust stacks, paved area with shed
E.81	4656-67	N	18mm	North wall of north light well, windows in 4 lower levels, angular shape 3 centre levels (pan)
E.82	4983	NW	18mm	Intersection north wall & west wall, recessed section of north wall, windows
E.83	4423	W	18mm	Western wall of southern light well 5 levels of 2X triple hopper style side opening windows
E.84	4967	W	18mm	Detail top of south wall, phone towers, steel walkway, windows, stacks

Take	File	Direction	Lens	Showing
INTERIOR TAKES – LEVEL 2				
2.01	4573	E	18mm	Arch foyer, stairs, leadlight arch window, polished timber doors
2.02	5240	S	18mm	Foyer wall, door to attendant's office
2.03	5240	S	100mm	Close detail hand painted lettering on polished maple timber sign
2.04	4542	E	18mm	Attendant's office, passage with timber handrail, attendant, kitchen unit
2.05	4541	E	35mm	Attendant's office, ceiling, shelf unit, polished door
2.06	4544	E	25mm	Attendant's office, letterbox shelf unit, handrail, linoleum passage floor
2.07	4547	N	18mm	Attendant's office, passage furniture
2.08	4554	SW	50mm	Attendant Peter, one of 3 such: Floyd, Leonard & Peter
2.09	4582	E	35mm	Polished door to doorman's box
2.10	4578	N	18mm	Once doorman's box at front door
2.11	4643	S	35mm	Passageway off rom foyer, red linoleum floor, ceiling, doorway
2.12	4607	S	18mm	Stairs up from foyer, balustrading, stairs, balcony, doorway
2.13	4712	S	50mm	Detail stairs, wrought iron balustrades & polished timber handrail
2.14	4706	SW	28mm	Stairs with wrought iron handrail
2.15	4710	NW	18mm	Stairs to Levels 2, 3 etc, lower Level 2 foyer
2.16	4613	W	18mm	Foyer on Level 2, stairs with wrought iron balustrades & timber handrail, passage through
2.17	4591	E	18mm	Entrance foyer, Level 3 balcony, arch above, decorative balustrades & rail
2.18	4595	W	100mm	Bronze plaque commemorating 1933 opening of the building with Rockefeller Foundation.
2.19	4617	Up	18mm	Stairs leading up from Level 2 through Level 6
2.20	4605	E	18mm	Foyer Level 2, Level 3 balcony across with balustrade fence, entrance doors
2.21	5242	N	18mm	Foyer at immediate entrance level, polished timber doors, bronze plaque, handrail
2.22	4598	N	100mm	Bronze plaque in memory of medical school members lost in VWW1 & VWW2
2.23	4941	W	100mm	Polished maple signage with hand painted lettering
2.24	4625	E	18mm	Polished timber doors over service facility
2.25	4628	N	28mm	Passageway, doorway, polished timber doors over electricity facility
2.26	4631	N	28mm	Polished timber doors over electricity facility
2.27	4636	NW	28mm	Lab Room 260
2.28	4641	SE	18mm	Laboratory Room 267
2.29	4633	S	28mm	Passageway 200Y, doors, ceiling, red linoleum floor

Take	File	Direction	Lens	Showing
2.30	4644	S	25mm	Passageway 200Y, polished timber doors with diffuse glass
2.31	4647	S	35mm	Passageway 200X, double glass doors Room 206, single door
2.32	4525	NE	25mm	Clinical Lecturer Dr Machaalani, with Prof Karen Waters in Laboratory Room 206
2.33	4649	S	25mm	Passageway 200X, windows, red linoleum floor
2.34	4650	NE	18mm	Passageway 200X, doors, red linoleum floor
2.35	4652	W	35mm	Passageway 214A, doors, ceiling panel with indirect lighting, windows, doors
2.36	4654	E	35mm	Passageway 214A, doors, ceiling panel with indirect lighting, windows, doors
2.37	4657	NW	35mm	Passageway 214A, polished doors, indirect lighting
2.38	4660	E	35mm	Passageway 200, wall of polished timber panel doors
2.39	4664	S	18mm	Circular central area 280, CH2700, doors to Rooms 262, 263, 266
2.40	4667	E	18mm	Circular central area 280, CH2700, doors to Rooms 290, 2691, passage, 281, 283
2.41	4670	N	18mm	Circular central area 280, CH2700, doors to Rooms 297, original glass notice box
2.42	4674	W	18mm	Circular central area 280, CH2700, doors to Rooms 286, passageway, 297
2.43	4677	NW	50mm	Department Endocrinology Room 286, original hand painted signage
2.44	4862	NE	18mm	Room 283, typical beams & columns
2.45	4683	NW	18mm	Circular central area 280, CH2700, passage, door to Rooms 297
2.46	4686	NW	50mm	Detail original timber notice box
2.47	4688	S	18mm	Polished doors Room 288
2.48	4693	S	18mm	Space W200
2.49	5244	N	18mm	Level 2 'Student' stairs space W200
2.50	5185	W	28mm	Mezzanine level 'Student' stairs, external pipes
2.51	4696	S	25mm	Space W220B
2.52	4700	N	25mm	Passageway W200
2.53	4701	SE	25mm	Space W200
2.54	4704	N	28mm	Entrance Level 1 (no access, see heritage recording of L1 Mortuary in University Archives)

INTERIOR TAKES - LEVEL 3

3.01	4715	N	18mm	Stairway with wrought iron balustrades & polished timber hand rail
3.02	4919	E	18mm	Level 3, balustrade fence, red linoleum floor, entrance arch
3.03	4728	E	35mm	Entrance arch, leadlight window, balustrade fence

Take	File	Direction	Lens	Showing
3.04	4935	E	100mm	Lecture Bell
3.05	4732	E	100mm	Bespoke lamp hanging from arch in foyer arch
3.06	4736	NE	28mm	Level 3 balcony with balustrade fence, arch
3.07	4742	N	28mm	Level 3 curved balustrade fence with wrought iron balustrades
3.08	4740	N	100mm	Close detail handrail + wrought iron balustrade, wall fixing
3.09	4744	S	35mm	Passageway 300A, CH2975, door, red screed floor, ceiling panel, indirect lighting
3.10	4747	N	35mm	Passageway 300A, polished doors over electrical facility
3.11	4748	S	35mm	Double door set to Room 313
3.12	4748	N	35mm	Wall signage/ Microsearch Laboratory/ anodised plaque
3.13	4758	N	28mm	Passage 313A to Bosh Building, original bespoke cupboard unit
3.14	4759	SW	28mm	Wider passageway 313A, 2 doors, passage 300A
3.15	4753	W	50mm	Passage 300A, electrical facility projecting, window
3.16	4762	N	35mm	Bathroom doorways: Female Staff 332, Female Attendants
3.17	4763	NE	25mm	Detail 2 bathroom doors, hand painted signage
3.18	4765	S	18mm	Inside of door to 332, tiled walls, original bronze handle
3.19	4768	NE	18mm	Typical original bathroom, tiled walls, hand basin, hopper window
3.20	4771	S	18mm	Gents bathroom 333, row of basins, windows, original green linoleum, 2X WC stalls
3.21	4774	N	18mm	Gents bathroom 333, 2X WC stalls, hopper style window, ceiling, green linoleum
3.22	4778	N	18mm	Gents bathroom 333, hand basins, windows, urinal
3.23	4782	NE	18mm	'Students' stairs, foyer W300B, doorway, passage
3.24	5183	W	50mm	Original hand painted signage on polished maple boards
3.25	4784	SE	18mm	Space W300B stairs, stairs foyer, ceiling
3.26	4788	W	18mm	Space 300A, passage to central area 300J
3.27	4794	SE	35mm	Detail timber frame, rectangular recess decoration in render
3.28	5299	W	25mm	Lift lobby, polished door
3.29	5209	N	100mm	Painted metal incinerator trap
3.30	4792	SW	18mm	Space W301A, timber doors to electrical facility
3.31	5206	NE	25mm	4X polished timber doors to electrical facility
3.32	4787	E	18mm	Space W300B, passage to central space 300J
3.33	5302	E	18mm	double doors to Lab 350
3.34	4450	NW	18mm	Senior Principle Research Fellow Professor Macdonald Christie, in his Lab 351A

Take	File	Direction	Lens	Showing
3.35	4797	W	18mm	Laboratory 351
3.36	4800	E	35mm	Passage 300C, wooden bench with back
3.37	4802	E	35mm	Wooden bench with back, red linoleum floor
3.38	4815	SE	18mm	Laboratory 371
3.39	4810	S	35mm	Passage 300, door 370, 372
3.40	5213	E	18mm	Laboratory 378
3.41	5212	N	18mm	Laboratory 378
3.42	5187	W	35mm	Passage to central space 300J
3.43	4820	NE	25mm	Room 391, column
3.44	4816	N	18mm	Room 391 through to 391A, column with capital & architrave
3.45	4822	W	18mm	Room 391, free standing column, 2 more within wall
3.46	5216	SW	18mm	Room 391, single free standing column Room 384
3.47	5190	NE	100mm	Exposed half column passage space 300J
INTERNAL TAKES – LEVEL 4				
4.01	4824	NW	18mm	Main staircase with wrought iron balustrades, polished handrail.
4.02	5288	E	50mm	Original wooden glass front notice box.
4.03	4934	E	100mm	Wall-mounted lecture time bells
4.04	4827	S	50mm	Passageway space 400, art deco beam
4.05	4830	S	50mm	Detail art deco beam
4.06	4831	S	100mm	Detail art deco capital for beam
4.07	4856	E	18mm	Polished door with side panel Room 406
4.08	4835	N	50mm	Drinking water fountain in passageway
4.09	4851	NE	100mm	Typical metal frame, hopper style window with handle locks
4.10	4836	SE	100mm	Bespoke laboratory cabinet awaits disposal
4.11	4843	E	18mm	Bespoke laboratory cabinet awaits disposal
4.12	4866	NW	28mm	Laboratory 425. Triple windows, storage cabinets
4.13	4859	S	18mm	Laboratory 425. Laboratory
4.14	4872	SW	28mm	Laboratory 425. Single window, bench, emergency shower
4.15	4870	W	28mm	Laboratory 425. Single window, bench, sink
4.16	4873	N	28mm	Laboratory 425. Laboratory cabinet, windows, bench, storage

Take	File	Direction	Lens	Showing
4.17	4862	NE	18mm	Laboratory 425.
4.18	4868	E	28mm	Laboratory 425. Dumb waiter, doors, ceiling, floor, laboratory cabinets
4.19	4881	W	28mm	'Student' stairs, red linoleum floors, stairs, balustrade fence
4.20	4878	E	28mm	Original fittings on wall: wooden sign, wooden glass front notice box
4.21	4883	SE	28mm	Stair landing, stairs, door to space CH3580
4.22	4886	E	28mm	Central aisle passage, doorway, steps
4.23	4889	N	18mm	Space C3600 & central aisle passage
4.24	5131	W	50mm	Photo Prof David Read & plaque Marie Bashir
4.25	5295	W	18mm	Double doors David Read Laboratory
4.26	4468	W	18mm	Prof Colin Sullivan in his workspace where sleepapnia treatment was developed Room 446
4.27	4504	S	18mm	Prof Sullivan demonstrates test bedding Room 452
4.28	4505	W	18mm	Room 451
4.29	4510	S	18mm	Room 451
4.30	4511	W	18mm	Room 451
4.31	4514	SW	18mm	Room 451
4.32	4519	N	18mm	Prof Sullivan in office Room 453
4.33	4892	E	35mm	Passageway 400D, original green linoleum, double doors, windows, ceiling
4.34	4896	W	50mm	Passage space 400D, windows, green floor, doors
4.35	4893	W	50mm	Electrical facility high on passage wall
4.36	4897	S	35mm	Passage 400D
4.37	4899	SW	18mm	Room 476
4.38	4902	W	18mm	Central space CH2850, central aisle, doors 482, 499
4.39	4904	S	18mm	Central space CH2850, doors 482, 484
4.40	5218	E	50mm	Centre aisle passage to central space CH2850, art deco beams
4.41	4906	E	18mm	Central space CH2850, centre aisle passage, doors 484, 491
4.42	4907	N	18mm	Central space CH2850, doors 499, 495, 491
4.43	4909	N	100mm	Central space CH2850, detail art deco capital
4.44	4911	SW	18mm	Room 495, 2X columns in wall
4.45	4913	N	18mm	Room 495, art deco column, high beams across
4.46	4915	W	18mm	Room 495, art deco columns
4.47	4918	S	18mm	Room 495, art deco columns, polished door

Take	File	Direction	Lens	Showing
4.48	4920	SW	50mm	Room 495, detail art deco capital on column
4.49	4922	W	18mm	Room 481, art deco columns & high beams
4.50	4923	S	18mm	Room 482, columns free standing & buried, high beams
4.51	4925	N	25mm	Room 481, columns, high beams
4.52	4930	NE	50mm	Room 482, single column with art deco capital, high beams
INTERIOR TAKES - LEVEL 5				
5.01	4949	NW	18mm	5 th floor landing, stairs, balustrade safety fence, polished hand rail
5.02	4953	Up	18mm	Staircase up to Level 6, roof with skylights
5.03	4959	E	100mm	Wall mounted lecture bell
5.04	4947	S	35mm	Passageway 500, green linoleum, green pin board
5.05	4943	S	100mm	Original flat hand painted sign reused perpendicular
5.06	4956	S	100mm	Close detail art deco beam support
5.07	4960	E	18mm	Room 501, door, original furniture
5.08	4963	N	18mm	Room 578
5.09	4969	SW	25mm	Passage corner 500/500A, double doors 509, 2X green pin boards on wall
5.10	4971	W	35mm	Passageway 500A, green pin boards, original green linoleum
5.11	4975	NE	28mm	Typical L5 double, metal hopper style window
5.12	4979	NE	50mm	Curved awning above window with screens
5.13	4977	NE	100mm	Twin bronze fastening handles on ornamental plate
5.14	4982	W	50mm	Passage 500A, electrical facility box, green linoleum
5.16	4986	W	100mm	Original timber 5th floor identity sign plate
5.17	4987	W	18mm	'Student' stairs, lobby, red linoleum
5.18	4990	NE	18mm	Lift lobby
5.19	4991	W	100mm	Detail painted & sealed incinerator chute
5.20	5003	N	18mm	Laboratory 504
5.21	5005	SE	35mm	Laboratory 504
5.22	5007	S	25mm	Original glass fronted cupboard
5.23	5057	E	25mm	500D, door & western entrance steps to Museum
5.24	5197	E	25mm	Passage 500C, windows, green linoleum
5.25	5011	N	100mm	Wall mounted drinking fountain in passage

Take	File	Direction	Lens	Showing
5.26	5017	NE	18mm	Museum 580, aisle between display shelf units to centre octagonal display unit, columns
5.27	5020	W	18mm	Museum 580, columns with original bespoke display shelf units attached, aisle between
5.28	5025	S	18mm	Museum 580, columns, radial display cases, radial aisles, ceiling beams
5.29	5037	S	35mm	Museum 580, columns, radial display cases, radial aisles, ceiling beams
5.30	5042	NW	100mm	Museum 580, original bespoke wall display case
5.31	5045	SW	25mm	Museum 580, detail base of column next display shelf unit with light green backing board
5.32	5046	W	25mm	Museum 580, original bespoke display shelf unit with lime green backing, columns
5.33	5048	S	25mm	Museum 580, columns, radial display cases, radial aisles, ceiling beams
5.34	5056	W	25mm	Museum 580, original bespoke octagonal central display cabinet
5.35	5016	E	18mm	Museum 580, original bespoke octagonal central display cabinet, columns
5.36	5013	W	35mm	Museum 580, polished door for eastern access to Museum

INTERIOR TAKES – LEVEL 6

6.01	5277	SE	25mm	Landing Level 6, notice box, pictures, doors, balustrade fence, wall
6.02	5104	E	35mm	Original wall mounted wooden notice box
6.03	4955	E	100mm	Wall mounted lecture bell
6.04	5199	NW	50mm	Original bespoke wooden cabinet
6.05	5139	S	28mm	Polished door 604
6.06	5141	S	100mm	Detail bronze door furniture, bronze handle
6.07	5131	S	100mm	Detail inside bronze door handle, later stainless lockset
6.08	5147	S	100mm	Detail protruding 180° hinge with removeable pin
6.09	5148	W	28mm	West wall Room 604, polished door, gas heater, original cabinets
6.10	5152	W	100mm	Detail floor mounted original small gas heater
6.11	5154	S	18mm	South wall Room 604, bespoke wall laboratory cabinet and bench
6.12	5161	S	100mm	Detail 4 brass electrical output switches
6.13	5163	S	100mm	Detail double gas outlet on bench
6.14	5170	S	28mm	Corner wall mounted shelf unit, painted hardwood timber bench, polished drawers beneath
6.15	5164	E	28mm	East wall, triple windows, painted hardwood bench, multiple tap plumbing, under bench sinks
6.16	5173	N	18mm	North wall of lab 604, large bespoke polished cupboard & bench unit
6.17	5181	N	28mm	Detail large bespoke polished cupboard & bench unit
6.18	5096	N	35mm	Passageway 600, drinking water fountain, polished door 610

Take	File	Direction	Lens	Showing
6.19	5094	S	25mm	Polished sliding door to Room 617
6.20	5093	N	25mm	Room 617, polished bespoke wooden wardrobe, bench, sliding door
6.21	5089	SW	18mm	Laboratory 617
6.22	5090	S	18mm	Laboratory 617, double hung, triple windows (9 & 6 pane)
6.23	5085	E	50mm	Passageway 600A, doors, green linoleum
6.24	5281	E	25mm	Ladies rest room door 633
6.25	5074	S	28mm	Ladies washroom 633A
6.26	5078	SE	18mm	Ladies washroom 633A, window, hand basins, 2X WC cubicles
6.27	5082	NE	18mm	Ladies washroom 633A, shower recess
6.28	5083	NE	100mm	Ladies washroom 633A, original bespoke wooden towel holding rail
6.29	5133	W	18mm	Double doors Laboratory 625
6.30	5134	SW	100mm	Bronze door handles with lock
6.31	5107	SW	28mm	Laboratory 625
6.32	5110	E	28mm	Laboratory 625, dumb waiter, doors, benches
6.33	5059	W	50mm	Bespoke wooden, glass notice box in main stairs landing Level 6
6.34	5100	N	18mm	Stairs & landing Level 6, skylights in ceiling, doorway to passage 600B
6.35	5125	E	35mm	Doorway, steps entrance to centre aisle space 680
6.36	5112	N	18mm	Centre space 680, doors 697, 691, columns in wall
6.37	5114	NW	35mm	Detail door 697
6.38	5118	S	18mm	Centre space 680, doors 683, 685
6.39	5120	NW	18mm	Room 683, door, columns in wall, suspended ceiling
6.40	5123	SW	35mm	Room 683, detail half column buried in wall, high beam
6.41	5121	NW	50mm	Centre space 680, passage to steps to landing, columns half buried in wall
6.42	5128	NE	35mm	Centre space 680, columns in wall, steps to landing
INTERIOR TAKES – LEVEL 7				
7.01	5255	N	18mm	Space 726, large ventilation unit
7.02	5253	NE	18mm	Space 700, ceiling, wall, double door, single door, column, high beam, floor
7.03	5247	N	18mm	Space 700C, looks at 703, electrical conduits, room with steel door, steps to mezzanine
7.04	5249	SE	18mm	Space 701A, large metal isolating, metal/concrete stairs up to roof, concrete walls & floors