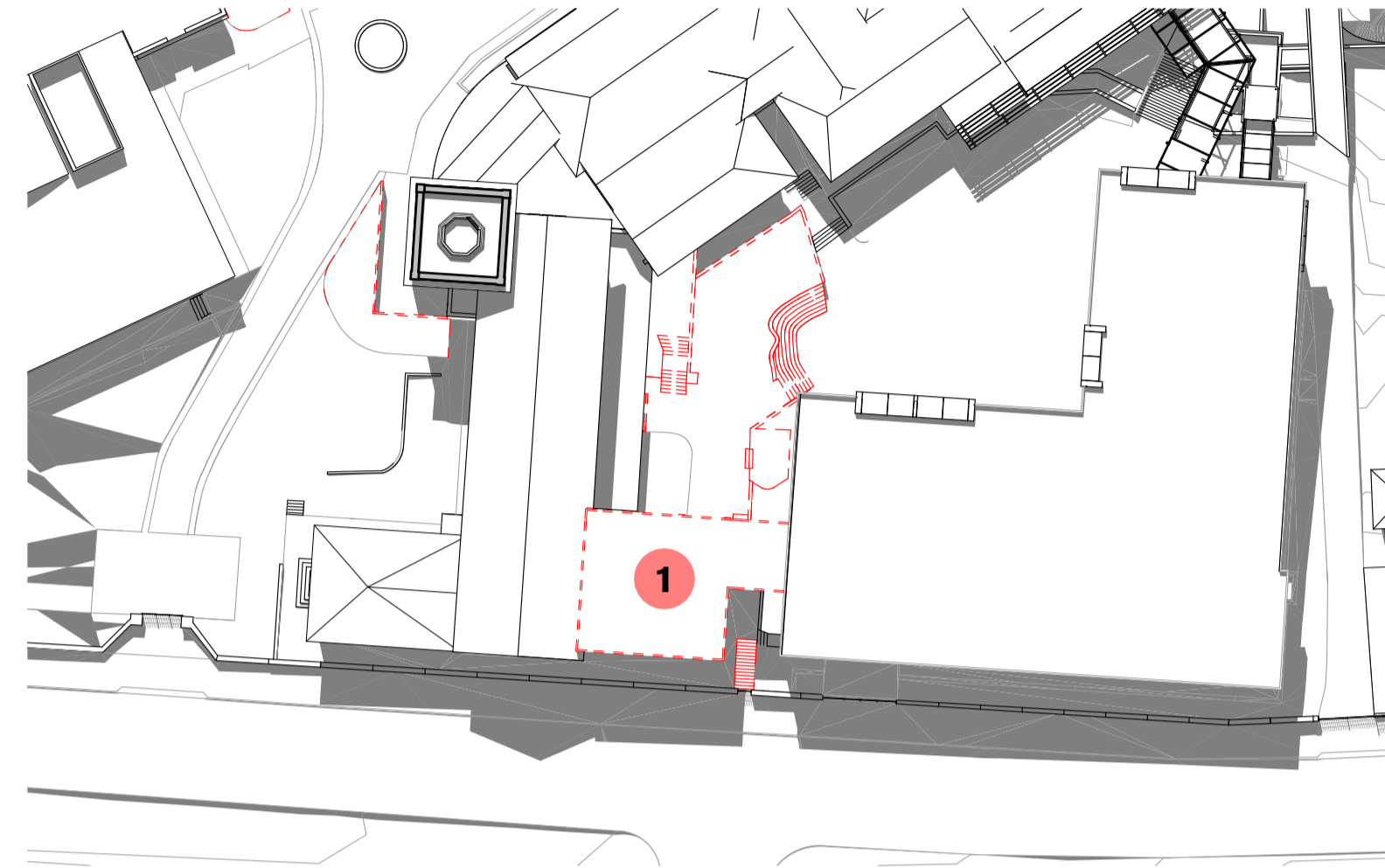


# Southern Precinct Plan

Stage 1.2 (Stage 1 Works)

## PROPOSED DEMOLITION

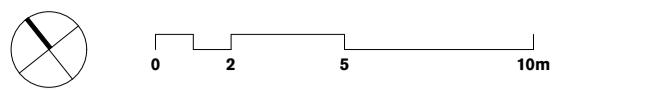
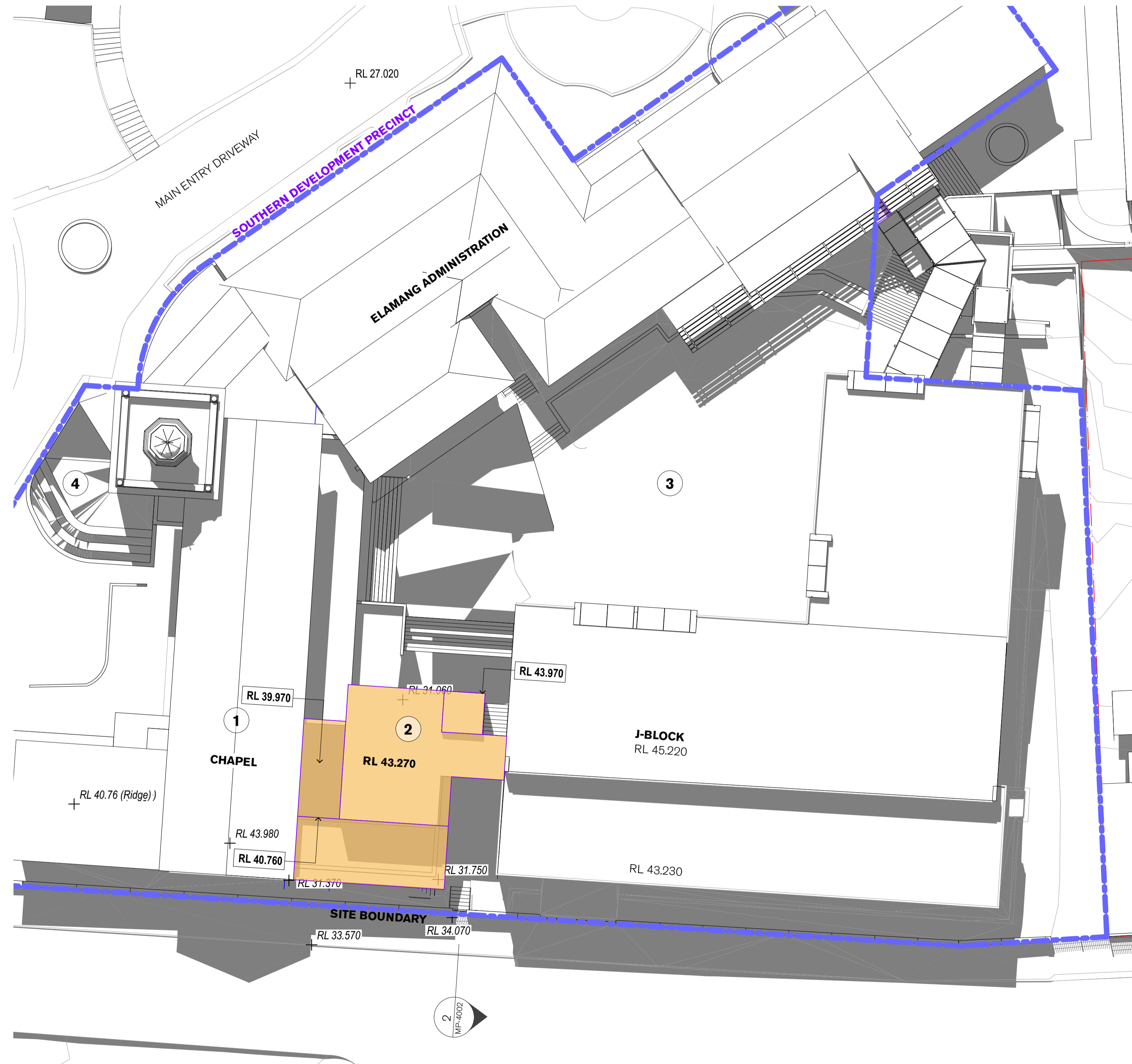
- 1 Partial demolition of external stairs, landings, walkways and planters in between the Chapel and J-Block. Demolition of top level of the eastern chapel wing extension. Lower ground excavation to accommodate new vertical connector.



PROPOSED DEMOLITION

## PROPOSED DEVELOPMENT

- 1 Internal refurbishment ground level of the chapel building.
- 2 Proposed development envelope for a 5 storey vertical connector pod involving the restoration of the east Chapel wing to its original profile on Carabella Street. The connector pod will consist of a lift, learning studios and an external learning terrace. Providing an accessible path of travel between the driveway, Chapel, St Joseph's Block and the courtyard.
- 3 Refurbished landscaped courtyard
- 4 New accessible entry path to the chapel incorporating tiered seating for outdoor learning



**GENERAL NOTES**  
 ALL DIMENSIONS AND EXISTING CONDITIONS SHALL BE CHECKED AND VERIFIED BY THE CONTRACTOR BEFORE PROCEEDING WITH THE WORK  
 ALL LEVELS RELATIVE TO AUSTRALIAN HEIGHT DATUM  
 DO NOT SCALE DRAWINGS  
 USE FIGURED DIMENSIONS ONLY

Legend

DEVELOPMENT ENVELOPE

EXISTING LEVELS (REFER SURVEY)

02	21/7/17	SSD Submission	AWY
01	7/7/17	SSD Submission	KT
REV	DATE	DESCRIPTION	BY

fjmt studio architecture interiors landscape urban community  
 sydney melbourne uk  
 Level 5, 70 King Street • +61 2 9251 7077 • [fjmtstudio.com](http://fjmtstudio.com)



project  
**Master plan**  
 85 Carabella Street, Kirribilli  
 Sydney NSW 2061

title  
**Envelopes**  
**Southern Precinct Envelope 1**

scale 1:200 @ A1 first issued 7/7/17

project code sheet no. revision

LKMP MP-1112 02