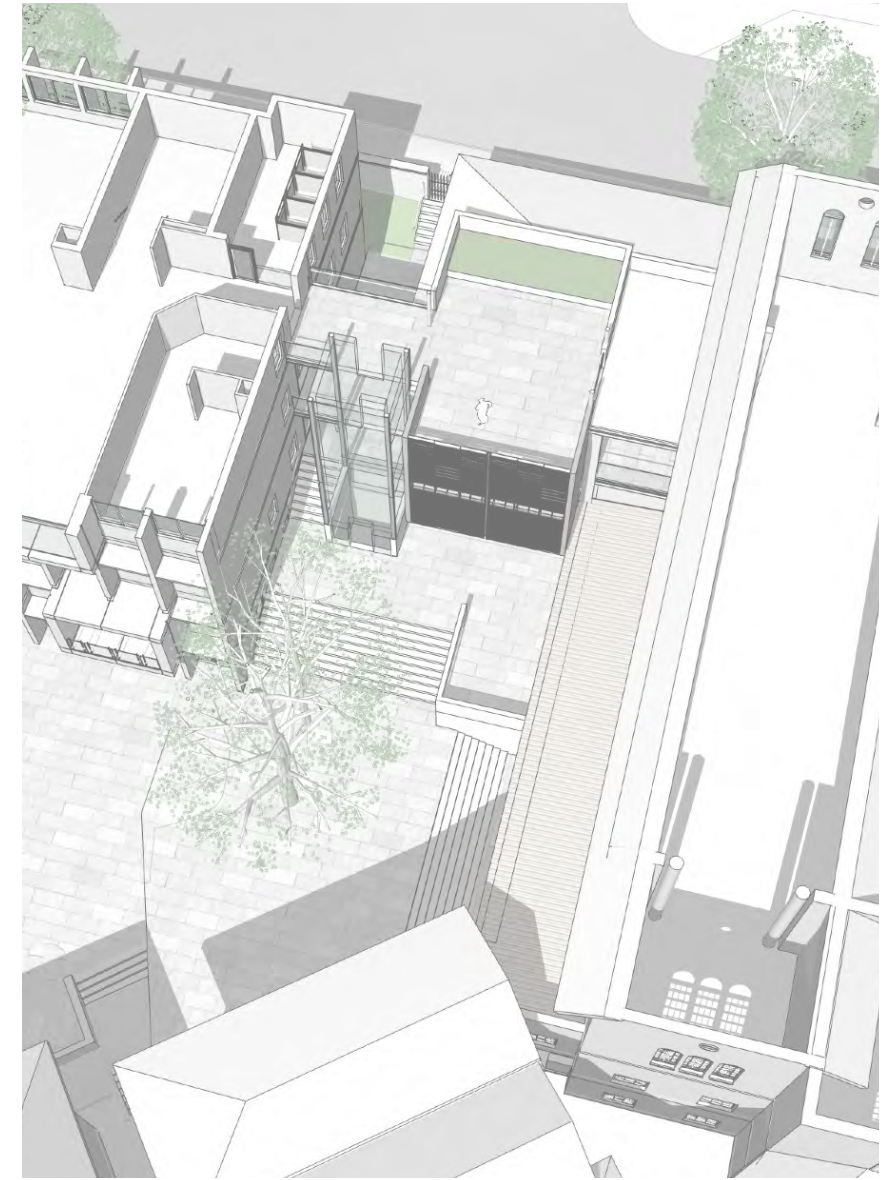




View of Southern Connector showing roof level connection between the Chapel and St Josephs (J - Block)



Axonometric Roof view

10.0 Materiality and Facades

Southern Connector

The materiality of the proposal is complimentary with the existing materiality of the Loreto Campus and also the surrounding context with reference to the Kirribilli Planning Area Character Statement.

The new Southern Connector will have an exposed structure of off form concrete with glazed infill. All glazing with be aluminium framed with either a dark bronze toned powder coat or anodized finish.

Reflectivity

The materials selected will have a compliant level of reflectivity and are consistent with the objectives of the North Sydney Council DCP.

Northern Connector

The materiality of the proposal is complimentary with the existing materiality of the Loreto Campus and also the surrounding context with reference to the Kirribilli Planning Area Character Statement.

The new Northern Connector will have an exposed structure of off form concrete with dark face brick infill. All glazing with be aluminium framed with either a dark bronze toned powder coat or anodized finish. The facade to the northern stair will be protected by dark bronze toned powder coat or anodized aluminium louvres which will provide the appropriate solar performance.

In order to improve the amenity of the views to the new Northern Connector from the adjacent buildings the lift enclosure at roof level is glazed.

Reflectivity

The materials selected will have a compliant level of reflectivity and are consistent with the objectives of the North Sydney Council DCP.

Learning Hub

The materiality of the proposal is complimentary with the existing materiality of the Loreto Campus and also the surrounding context with reference to the Kirribilli Planning Area Character Statement.

The new Learning Hub will have an exposed structure of off form concrete with dark face brick infill. All glazing with be aluminium framed with either a dark bronze toned powder coat or anodized finish and the north facing balconies will be protected by a fine grained stainless steel mesh or similar to provide both fall protection and also solar shading. The facade to the northern stair will be protected by dark bronze toned powder coat or anodized aluminium louvres which will provide the appropriate solar performance.

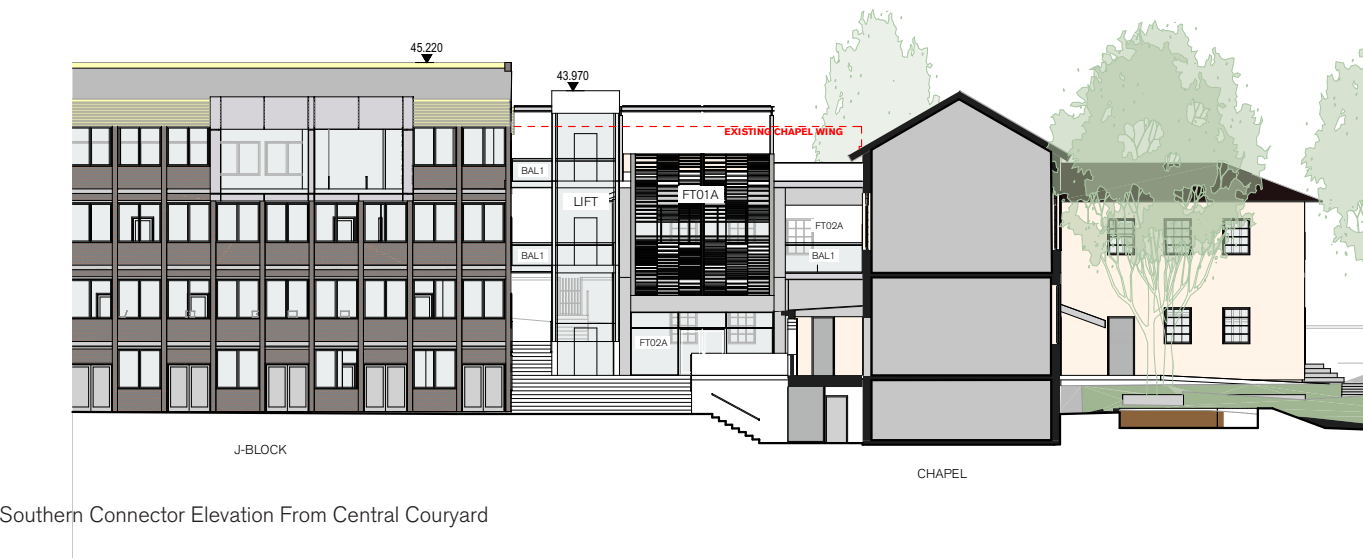
In order to improve the amenity of the views to the new Learning Hub from the adjacent residential apartment building the lift enclosure at roof level is glazed. The accessible roof scape is either paved or planted and the plant areas will be screened with aluminium louvres and screening elements.

The connecting walkways will be rendered and painted concrete, with a similar coloration to the existing fabric. It is intended that landscaped edges will be located at intervals along the walkways as well as on the roof terraces of both the Learning Hub and the Gymnasium extension.

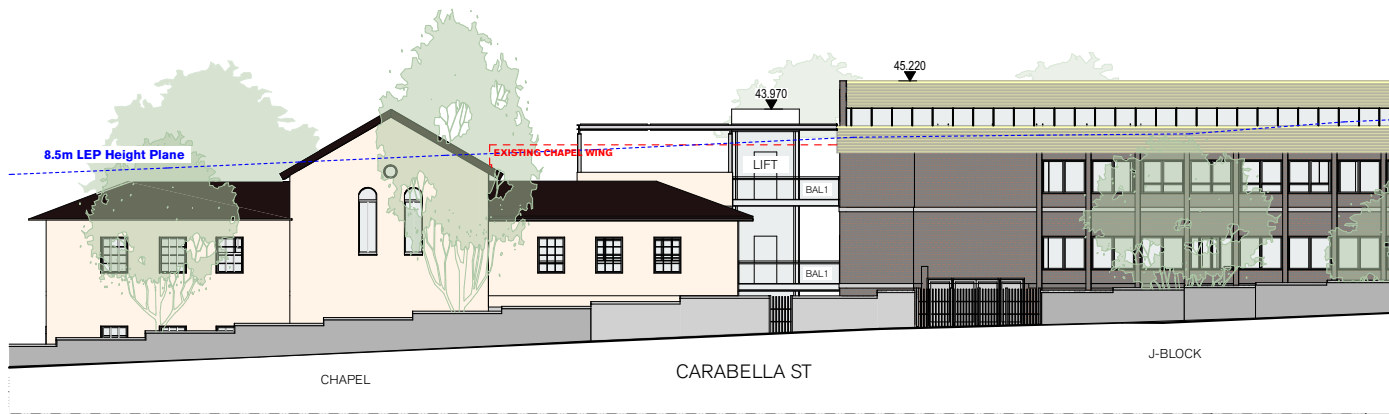
The facade of the extension to the Gymnasium will be have a similar palette to the Learning Hub, dark coloured face brick with aluminium framed glazing and louvres.

Reflectivity

The materials selected will have a compliant level of reflectivity and are consistent with the objectives of the North Sydney Council DCP.



Southern Connector Elevation From Central Courtyard



Southern Connector Elevation Carabella Street



Northern Connector Elevation Elamang Avenue

FT01A	ALUMINIUM BATTENS WITH GLAZING (STAIR)
FT01B	ALUMINIUM BATTENS WITH FULL HEIGHT FIXED GLAZING BEHIND
FT02A	FULL HEIGHT FIXED GLAZING
FT02B	FIXED FULL HEIGHT GLAZING WITH LIGHT SHELF
FT03	WOVEN METAL MESH SCREEN
BAL1	BALUSTRADE - GLASS
BAL2	BALUSTRADE - PLANTER
BRK1	FACE BRICK
CON1	OFF FORM CONCRETE
PF1	PAINT FINISH
LV1	ACOUSTIC ALUMINIUM LOUVRES
LIFT	GLASS LIFT TO ENG. SPEC