



Loreto Kiribilli
Landscape Masterplan
July 2017

Contents

- Introduction
- Objectives
- Tree Masterplan
- Landscape Stage 1
- Landscape Masterplan
- Planting Palette

Introduction

The following landscape masterplan has been prepared to outline a framework for landscape improvements incorporated in ongoing campus works.

Objectives

As subsequent stages within the masterplan are developed the landscape will adopt the same guiding principles to sympathetic to existing landscape and architectural features.

- Respect and enhance the setting and existing natural features of the site
- Incorporate the accessible and weatherproof paths of travel with existing and proposed buildings
- Propose an ongoing strategy for the retention, removal and replacement of existing trees
- Provide areas gardens to assist with learning eg- food technology, science
- Provide landscape amenity to new buildings
- Propose a consistent palette of materials and planting for ongoing use in future stages

Tree Masterplan

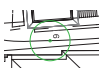
Trees are an important asset to this area and site. The canopy within and surrounding the campus is significant, and the proposal aims to complement and enhance this aesthetic.

Existing Trees

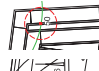
Information on this plan is based on Arboricultural Impact Appraisal and Method Statement completed by Naturally Trees.
Trees have been assessed for their health significance and impact proposed works are likely to have on their health.

Proposed Trees


Trees are proposed are to be a mixture of native and exotic species selected for their suitability for growing on the site, visual amenity and functional considerations.



Existing tree to be retained



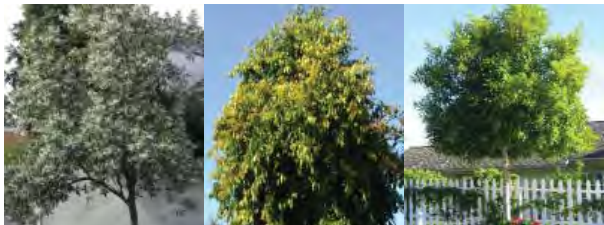
Existing tree to be removed



Tree Reference Number
Refer Naturally Trees Report

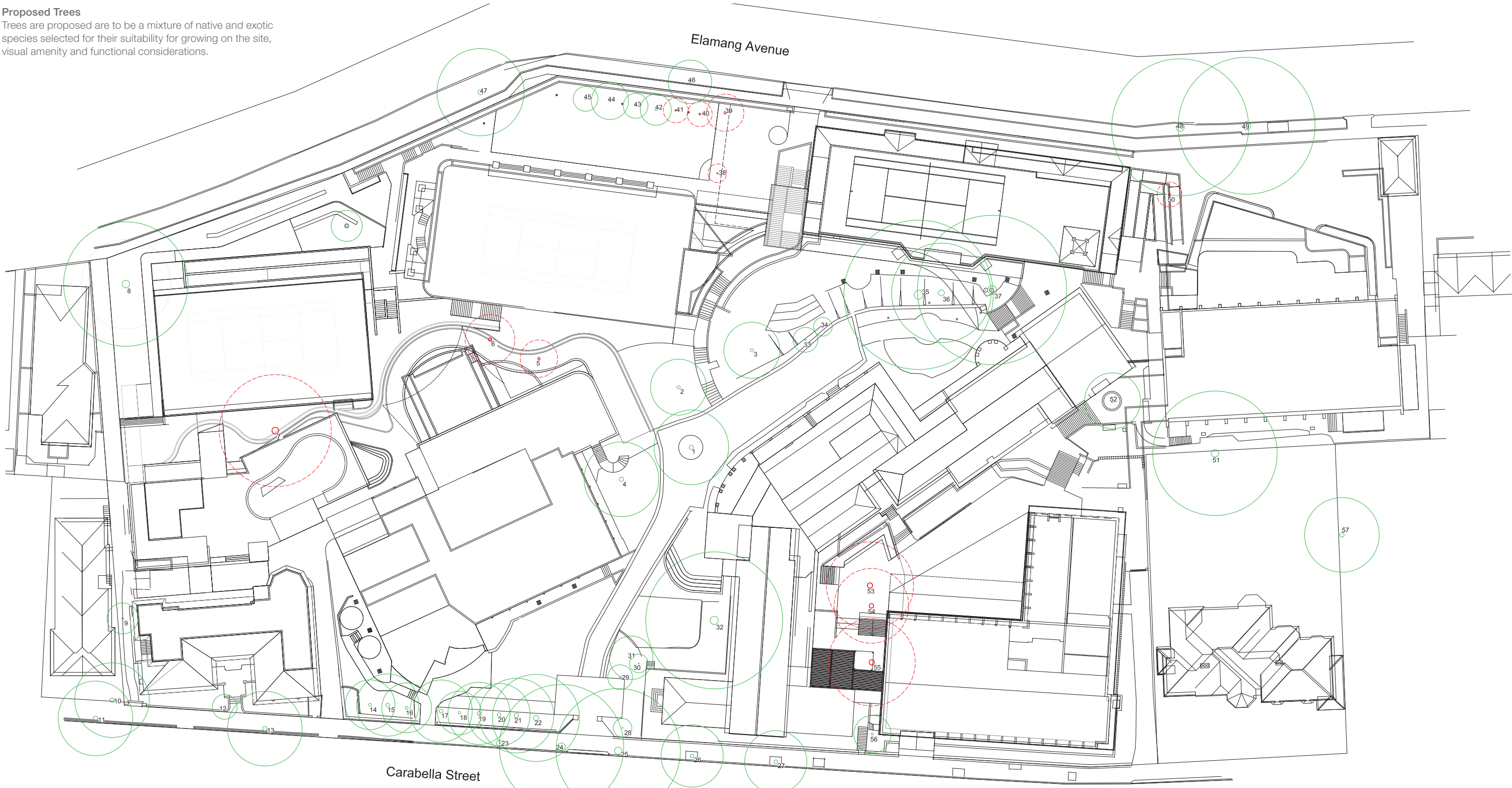
Native Planting

Waterhousia floribunda
Elaeocarpus reticulatus
Tristaniopsis laurina



Feature Planting

Lagerstroemia indica
Magnolia 'Little Gem'
Frangipani



Landscape Stage 1



Gymnasium Breakout Space
A open deck area is proposed adjacent to the refurbished gymnasium. This space will serve as a break out space with seating providing greater usability to a currently sloped embankment.

Northern connector
Proposed planting and hardscape zones for Centenary Hall forecourt

Eastern connector
Landscaping is proposed to be incorporated into ramps to allow for ramp access to the auditorium.

Food Technology Garden
Garden area for use with food technology. Raised planter beds and circulation spaces.

Junior School Terrace
Outdoor Learning and garden space for junior school

Chapel Seating
Gathering space adjacent chapel for small gatherings.

Southern connector
Access to J block courtyard, additional seating and planting to fringes.

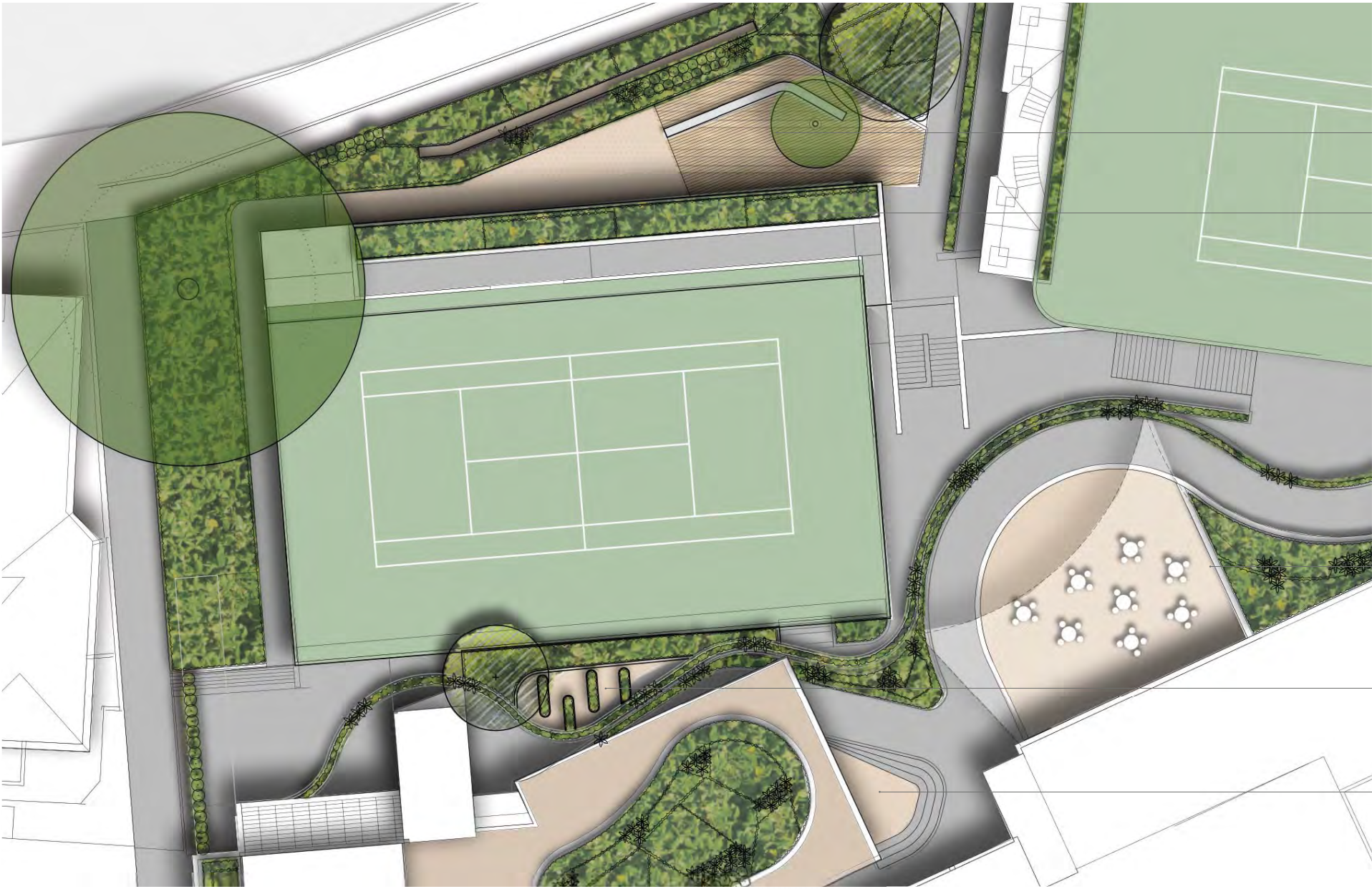
Landscape Masterplan



Eastern Development Precinct
Complimentary landscaping to proposed building may include- boundary planting, breakout spaces, feature planting to circulation and peripheral areas. Planting concepts and materiality to be consistent with stage 1.

Southern Precinct Envelope
Maintain existing trees and provide peripheral landscaping to outdoor learning spaces, circulation and presentational areas. Planting concepts and materiality to be consistent with stage 1.

Learning Hub



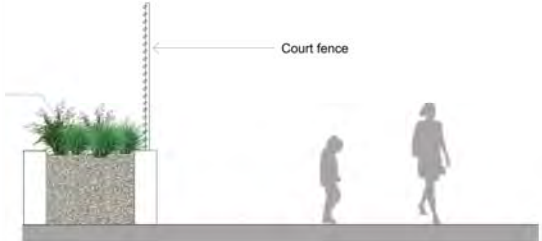
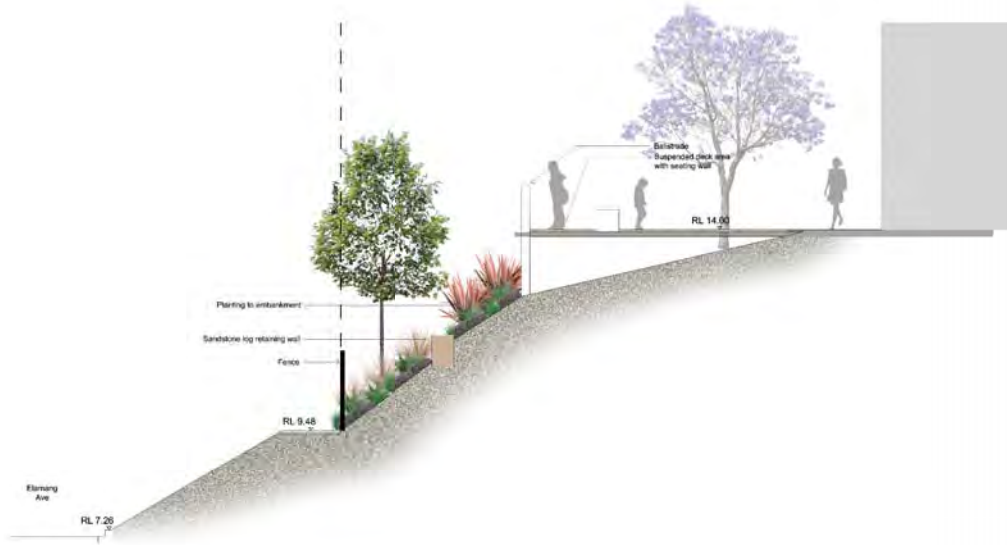
Gymnasium Breakout Space and vegetated embankment.

Planting and seating to multipurpose court edge

Junior school outdoor space. Raised planter beds, learning areas, circulation space.

Food technology garden

Learning hub outdoor learning space



Southern Connector



Outdoor learning and seating area



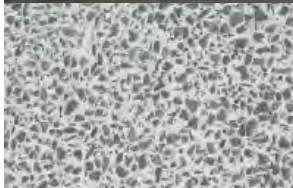





Terraced seating next to stairs

Sheltered cafe seating



Materials Palette

The following materials are proposed for the landscape masterplan to provide a unified palette of finishes for the masterplan. Materials have been selected to compliment existing materials, durability and ongoing availability.

PAVING					FURNITURE			
	Ashphalt	Circulation Pathways & Vehicular Zones	-	-		Aluminium or composite timber	Courtyards, terraces	NA
	Aggregate Concrete	Circulation Pathway		Grey cement with aggregate				
	Unit Paver or Tile	Terraces	500 x 400 x 20mm	Sesame Grey				
	Softfall	Outdoor Learning Spaces		TBA				
	Synthetic Turf	Outdoor Learning spaces						
WALLS								
	Insitu Concrete	Incorporated into proposed buildings	Width Varies 150/500/1000	Off White	Flush Concrete Kerb Edging			
						External landscape space	150m x 150mm	

Planting Palette

The following palting palette is proposed for the landscape masterplan species listed are proposed to provide a broad framework across the scool with further themes and requirements picked up in the development of future areas.

Botanic Name	Common Name	Mature Size (m) h x w	Low Water Use	Indeginous / Native	Bird Attracting	Scented
Trees						
<i>Elaeocarpus reticulatus</i>	Bluebery Ash	4 x 8	*	*	*	
<i>Lagerstroemia indica</i>	Indian Summer Crepe Myrtle	6 x 4				
<i>Tristaniopsis laurina</i>	Water Gum	6 x 4	*	*	*	
<i>Magnolia</i> 'Little Gem'		6 x 3				
Shrubs & Accents						
<i>Arthropodium cirratum</i>	New Zealand Rock Lily	0.5 x 0.5				
<i>Asplenium australasicum</i>	Birds Nest Fern	1 x 1	*			
<i>Beschorneria yuccoides</i>	Mexican Lily	1.5 x 1.5	*			
<i>Buxus Microphylla Japonica</i>	Japanses Box Hedge	.6 x .6				
<i>Camellia sasanqua</i> 'Setsugekka'		4 x 1.5				
<i>Cordyline</i> 'Red Sensation'		1 x 1				
<i>Lavandula Dentata</i>	French Lavender	1.2 x 1.2				*
<i>Murraya paniculata</i>	Orange Jessamine	1 x 1.2				
<i>Philodendron</i> 'Xanadu'	Philodendron Xanadu	0.5 x 0.5				
<i>Raphiolepis indica</i> 'Oriental Pearl'	Indian Hawthorne	1 x 1				
<i>Rosmarinus officinalis</i>	Rosemary	1.5 x 1.5	*			*
<i>Viburnum odoratissimum</i>	Sweet Vibimum	1.5 x 1.5				
<i>Westringia fruticosa</i>	Coastal Rosemary	1 x 1		*		*
Grasses and Groudcovers						
<i>Acanthus mollis</i>	Oyster Plant	1 x 1				
<i>Agapanthus orientalis</i>	Agapantha	0.6 x 0.6				
<i>Tagetes erecta</i>	Marigold	1 x 0.4				
<i>Clivia miniata</i>	Kaffir Lily	.4 x .4				
<i>Convolvulus mauritanicus</i>	Bindweed	.3 x .7				
<i>Dichondra repens</i>	Kidney Weed	.1 x 1				
<i>Liriope muscari</i> 'Just Right'	Liriope 'Just Right'	0.5 x 0.5				
<i>Viola hederacea</i>	Native Violet	.1 x 1				
<i>Trachelospermum jasminoides</i>	Star Jasmine	.2 x 1				*
Food Technology						
<i>Citrus limon</i> 'Dwarf Eureka'	Dwarf Eureka Lemon	3 x 1				
<i>Malus</i> 'Granny Smith'	Granny Smith Apple Tree	6 x 4				
<i>Malus ioensis</i> 'Plena'	Prairie Crab-Apple	6 x 4				
<i>Alium</i> spp.	Leek	0.4 x 0.1				
<i>Ocimum basilicum</i>	Sweet Basil	.6 x .6				*
<i>Beta vulgaris</i>	Beetroot	0.3				
<i>Cymbopogon citratus</i>	Lemongrass					
<i>Coriandrum sativum</i>	Coriander					
<i>Daucus carota</i>	Carrot	0.2				
<i>Fragaria x ananassa</i>	Strawberry	0.1 x 0.1				
<i>Ipomoea batatas</i>	Sweet Potato	0.1 x 0.4				
<i>Mentha spicata</i>	Mint	1 x 1				*
<i>Pisum sativum</i> var. <i>saccharatum</i>	Snow Peas	1				
<i>Rosemarinus officinalis</i>	Rosemary	0.5 x 0.5				*
<i>Salvia elegans</i>	Pineapple Sage	1.5 x 1.5				
<i>Salvia officinalis</i>	Common Sage	0.5 x 0.5				
<i>Solanum tuberosum</i>	Potato	-				
<i>Tomato</i> spp.	Tomato Vine	1				
<i>Thymus vulgaris</i>	Common Thyme	0.3 x 0.3				*



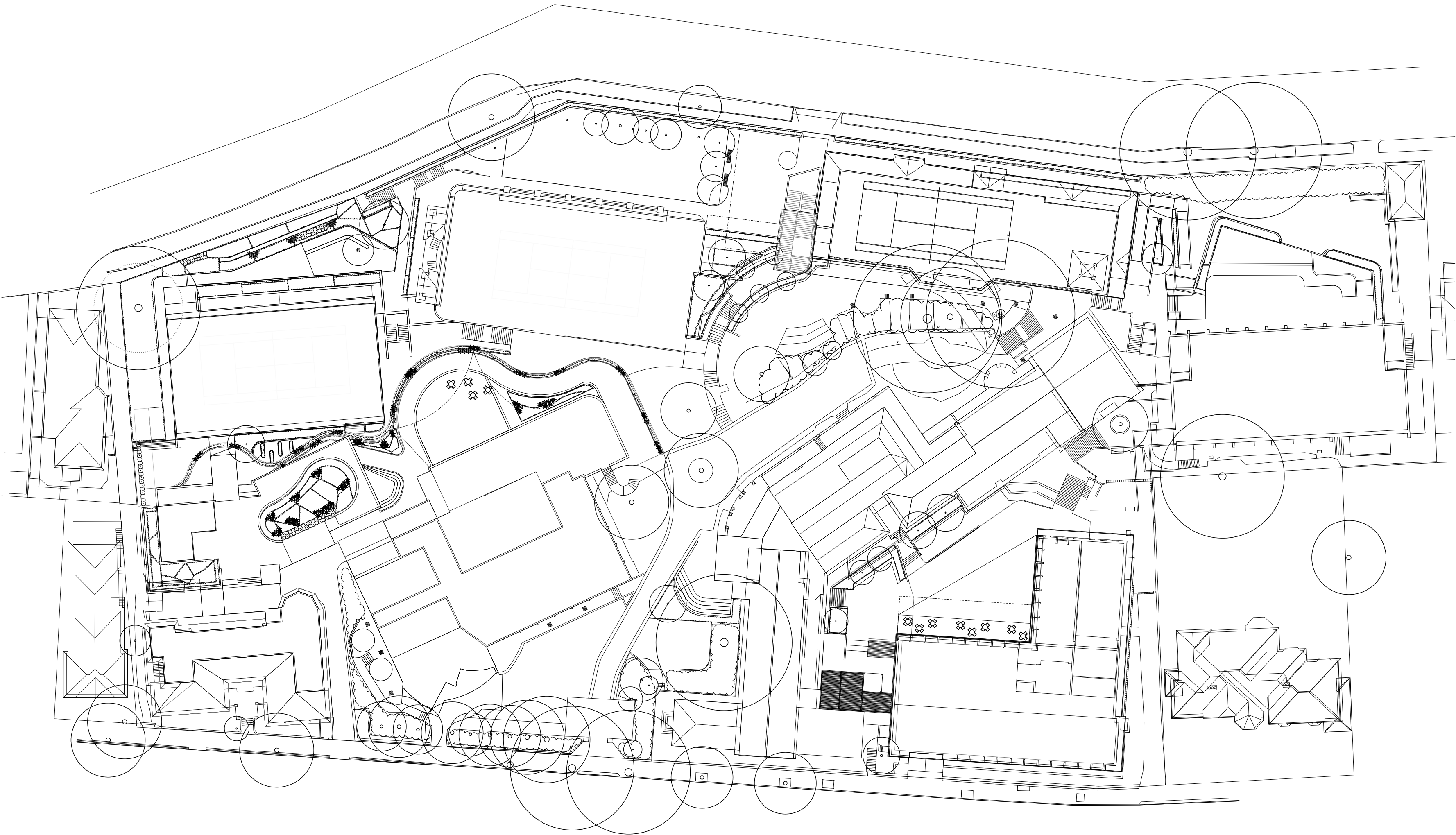
Loreto Kirribilli

Learning Hub, Gymnasium and Connectors

Landscape Development Application

Drawing Schedule

Drawing Number	Drawing Title	Scale
LH-000	Landscape Coversheet	N/A
LH-101	Landscape Plan Level Lower Ground 4	1:100
LH-102	Landscape Plan Level Lower Ground 2	1:100
LH-103	Landscape Plan Level Lower Ground 1	1:100
LH-104	Landscape Plan Level Ground	1:100
LH-105	Landscape Plan Level Level 1 & Rooftop	1:100
LH-106	Landscape Plan Northern Connector	1:100
LH-107	Landscape Plan Eastern Ramp Connector	1:100
LH-501	Landscape Details	As Shown
LH-601	Landscape Sections	As Shown



Site Plan | Scale 1:500

NOT FOR CONSTRUCTION

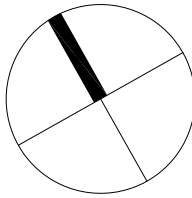
© 2016 Site Image (NSW) Pty Ltd. ABN 44 801 262 380 as agent for Site Image NSW Partnership. All rights reserved. This drawing is copyright and shall not be reproduced or copied in any form or by any means (graphic, electronic or mechanical including photocopy) without the written permission of Site Image (NSW) Pty Ltd. Any license, expressed or implied, to use this document for any purpose what so ever is restricted to the terms of the written agreement between Site Image (NSW) Pty Ltd and the instructing party.

The contractor shall check and verify all work on site (including work by others) before commencing the landscape installation. Any discrepancies are to be reported to the Project Manager or Landscape Architect prior to commencing work. Do not scale this drawing. Any required dimensions not shown shall be referred to the Landscape Architect for confirmation.

D	Architectural coordination	SM	NM	12.07.2017
C	Preliminary DA	JD	NM	20.03.2017
B	Architectural coordination	JD	NM	20.02.2017
A	Preliminary	JD	NM	21.12.2016
Issue	Revision Description	Drawn	Check	Date

LEGEND

Key Plan:



Client:
Loreto Kirribilli

Project:
Loreto Kirribilli
Gymnasium and Learning Hub

S I T E I M A G E

Level 1, 3-5 Baptist Street
Redfern NSW 2016
Australia

Tel: (61 2) 8332 5600
Fax: (61 2) 9698 2677
www.siteimage.com.au

Site Image (NSW) Pty Ltd
ABN 44 801 262 380

Landscape Architects

PRELIMINARY

Drawing Name:
Landscape Coversheet

Scale:	Job Number:	Drawing Number:	Issue:
	SS16-3422	LH-000	D

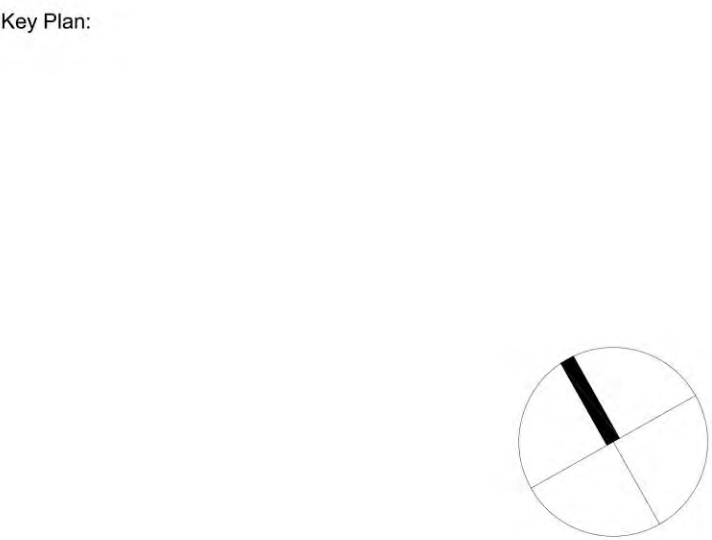


© 2016 Site Image (NSW) Pty Ltd. ABN 44 801 262 380 as agent for Site Image NSW Partnership. All rights reserved. This drawing is copyright and shall not be reproduced or copied in any form or by any means (graphic, electronic or mechanical including photocopy) without the written permission of Site Image (NSW) Pty Ltd. Any license, expressed or implied, to use this document for any purpose what so ever is restricted to the terms of the written agreement between Site Image (NSW) Pty Ltd and the instructing party.

The contractor shall check and verify all work on site (including work by others) before commencing the landscape installation. Any discrepancies are to be reported to the Project Manager or Landscape Architect prior to commencing work. Do not scale this drawing. Any required dimensions not shown shall be referred to the Landscape Architect for confirmation.

E	Architectural coordination	SM	NM	12.07.2017
D	Architectural coordination	SM	NM	28.06.2017
C	Preliminary DA	JD	NM	20.03.2017
B	Architectural coordination	JD	NM	20.02.2017
A	Preliminary	JD	NM	21.12.2016
Issue	Revision Description	Drawn	Check	Date

- LEGEND**
- Proposed Tree
 - Proposed Shrubs and Accents
 - Proposed Grasses and Groundcovers
 - Decking
 - Softfall or Artificial Turf
 - Concrete



Client:
Loreto Kirribilli

Project:
**Loreto Kirribilli
Gymnasium and Learning Hub**

SITE IMAGE

Level 1, 3-5 Baptist Street
Redfern NSW 2016
Australia

Tel: (61 2) 8332 5600
Fax: (61 2) 9698 2877
www.siteimage.com.au

Site Image (NSW) Pty Ltd
ABN 44 801 262 380

Landscape Architects

PRELIMINARY

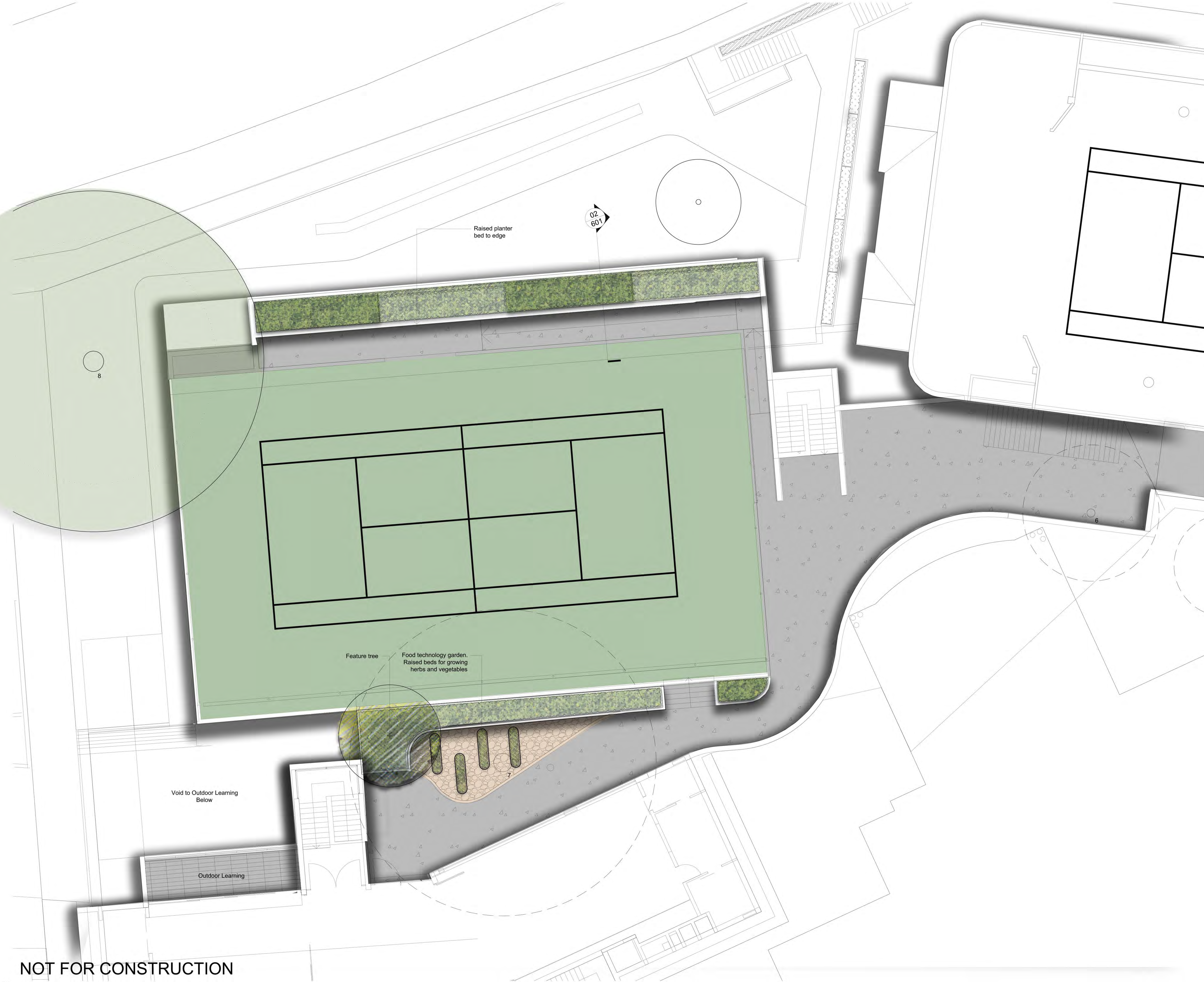
Drawing Name:
**Landscape Plan
Lower Ground 4**

Scale:
Job Number: **SS16-3422**

Drawing Number: **LH-101**

Issue: **E**

NOT FOR CONSTRUCTION



© 2016 Site Image (NSW) Pty Ltd ABN 44 801 262 380 as agent for Site Image NSW Partnership. All rights reserved. This drawing is copyright and shall not be reproduced or copied in any form or by any means (graphic, electronic or mechanical including photocopy) without the written permission of Site Image (NSW) Pty Ltd. Any license, expressed or implied, to use this document for any purpose what so ever is restricted to the terms of the written agreement between Site Image (NSW) Pty Ltd and the instructing party.

The contractor shall check and verify all work on site (including work by others) before commencing the landscape installation. Any discrepancies are to be reported to the Project Manager or Landscape Architect prior to commencing work. Do not scale this drawing. Any required dimensions not shown shall be referred to the Landscape Architect for confirmation.

D	Architectural coordination	SM	NM	12.07.2017
C	Preliminary DA	JD	NM	20.03.2017
B	Architectural coordination	JD	NM	20.02.2017
A	Preliminary	JD	NM	21.12.2016
Issue	Revision Description	Drawn	Check	Date

- LEGEND
- Proposed Tree
 - Proposed Shrubs and Accents
 - Proposed Grasses and Groundcovers
 - Decking
 - Softfall or Artificial Turf
 - Concrete

Key Plan:

Client:
Loreto Kirribilli

Project:
Loreto Kirribilli
Gymnasium and Learning Hub

SITE IMAGE
Level 1, 3-5 Baptist Street
Redfern NSW 2016
Australia
Tel: (61 2) 8332 5600
Fax: (61 2) 9698 2677
www.siteimage.com.au
Site Image (NSW) Pty Ltd
ABN 44 801 262 380
Landscape Architects

PRELIMINARY

Drawing Name:
Landscape Plan
Lower Ground Level 2
Scale:
Job Number: SS16-3422
Drawing Number: LH-102
Issue: D

NOT FOR CONSTRUCTION