



THE UNIVERSITY OF  
**SYDNEY**

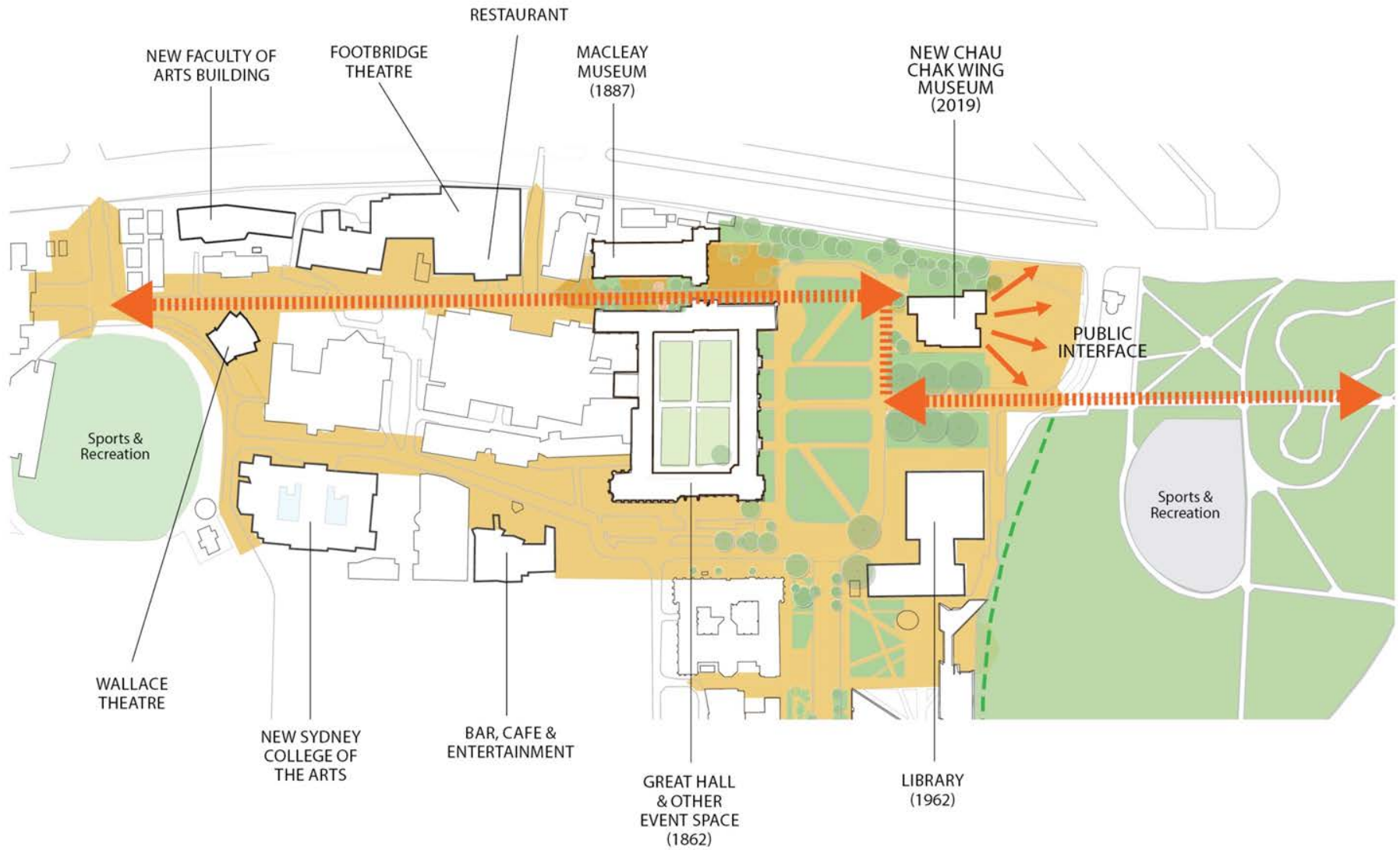
## **Chau Chak Wing Museum**

---

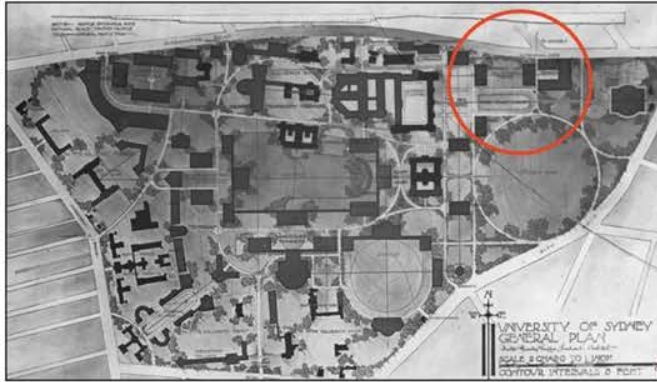
**NSW Heritage Council Briefing**

1 November 2017

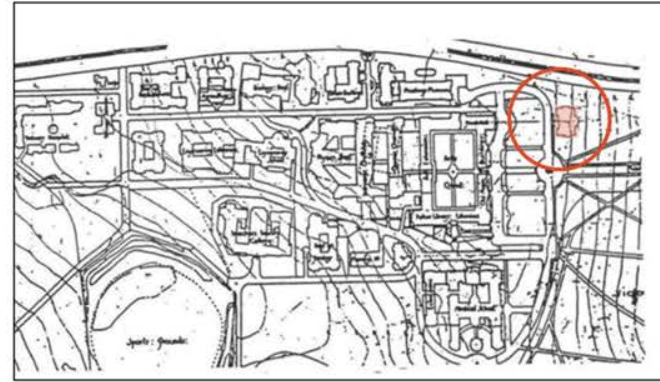
# Campus Context - Arts & Cultural Quarter



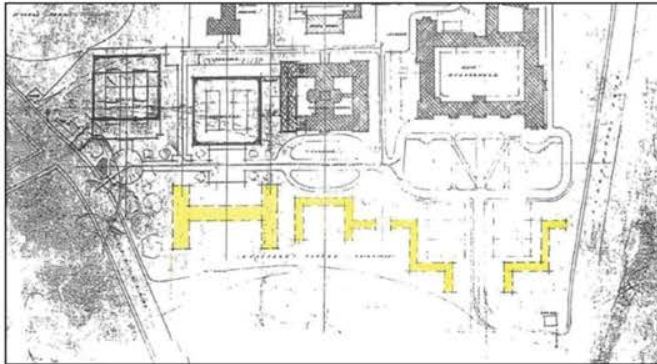
# Proposed Museum Site - Previous Concepts for Site



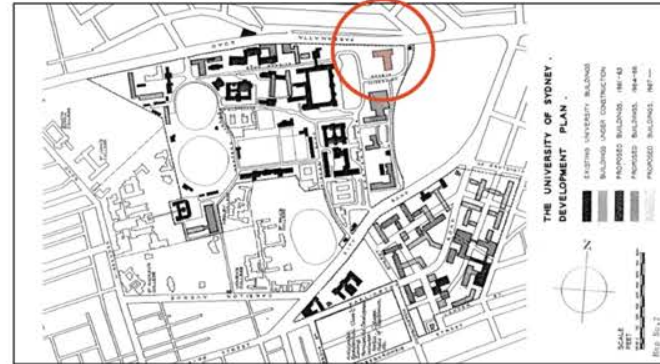
Walter Burley Griffin, Campus Plan, 1915



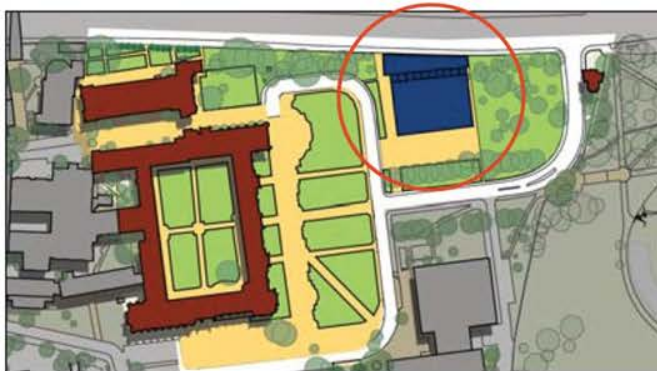
George McRae (Govt Architect), 1917



Wilkinson Masterplan, 1939

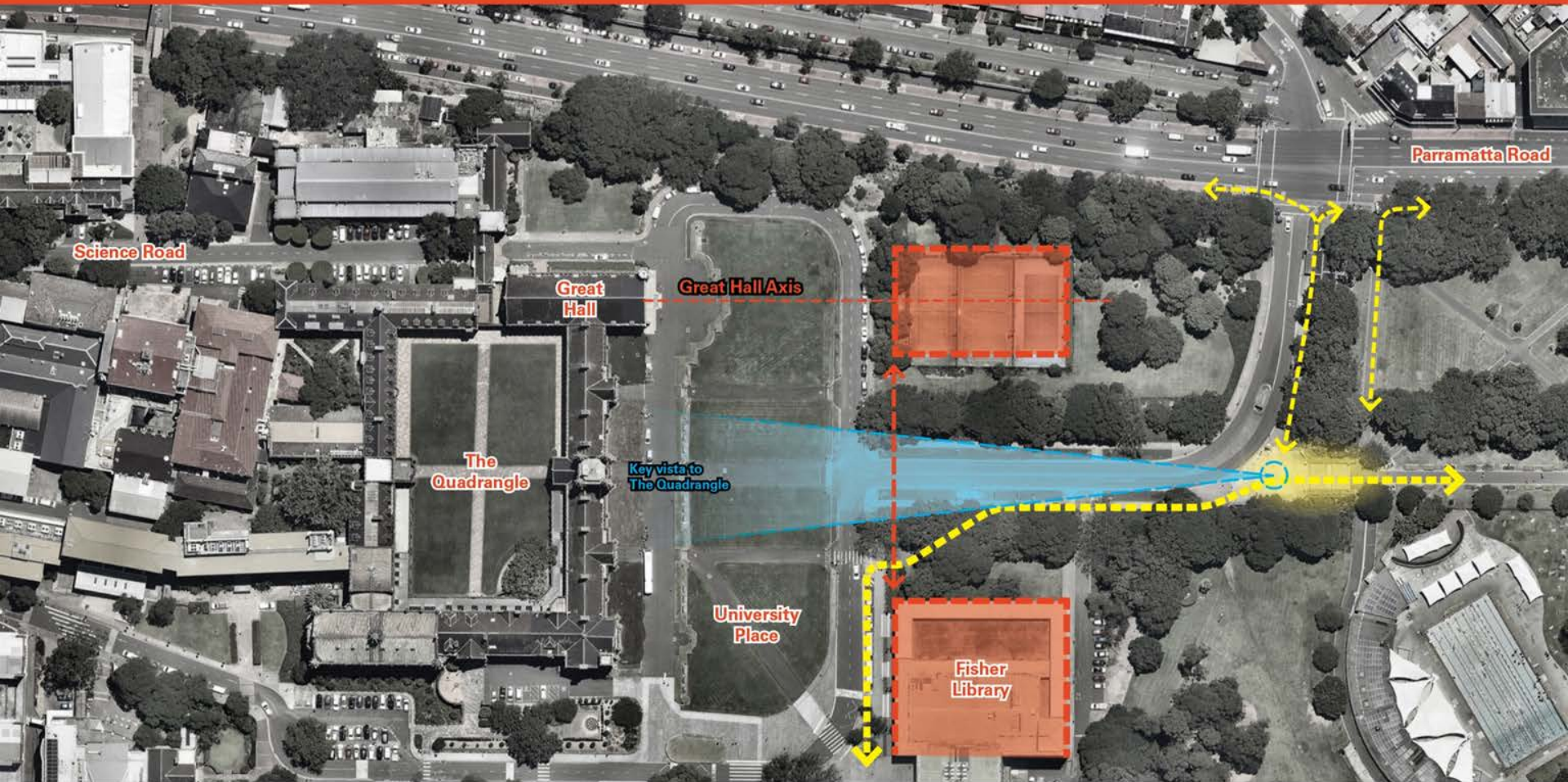


W H Maze (USyd Architect), Dev. Plan, 1961



Cox Masterplan for 2030 (2008) - 6 storey Gallery

## Proposed Museum Site



### Strengthening University Place

Responding to the scale and alignment of the Fisher Library to complete the civic edge of University Place, a building on the site can reinforce the arrival gateway to the Campus from Victoria Park, and improve the definition and activation of University Place.

## Proposed Museum Site



---

### **Welcoming and Activated**

The proposed site can play an important role in opening up and activating this part of the Campus.

# Opportunities for a New Purpose Built Museum

Welcoming entrance activating and reinforcing University Place



World class exhibition spaces connected to landscape



Greatly expanded displays increasing access to collections



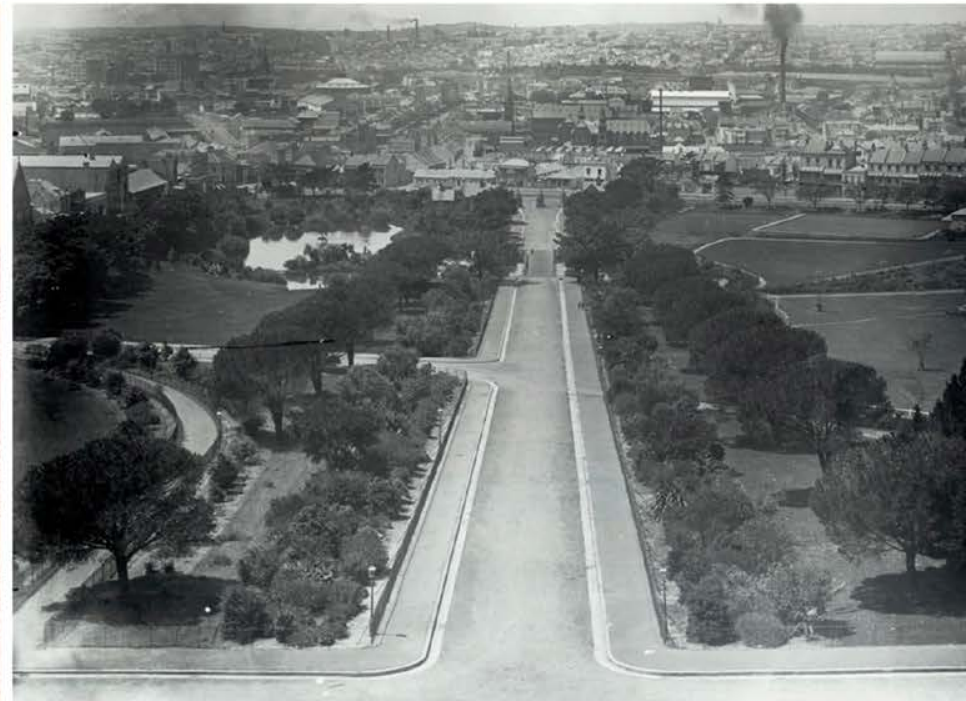
Variety of spaces for engagement and learning



## Proposed Museum - Landscape Site Assessment (2016)



1870 View along Approach Avenue



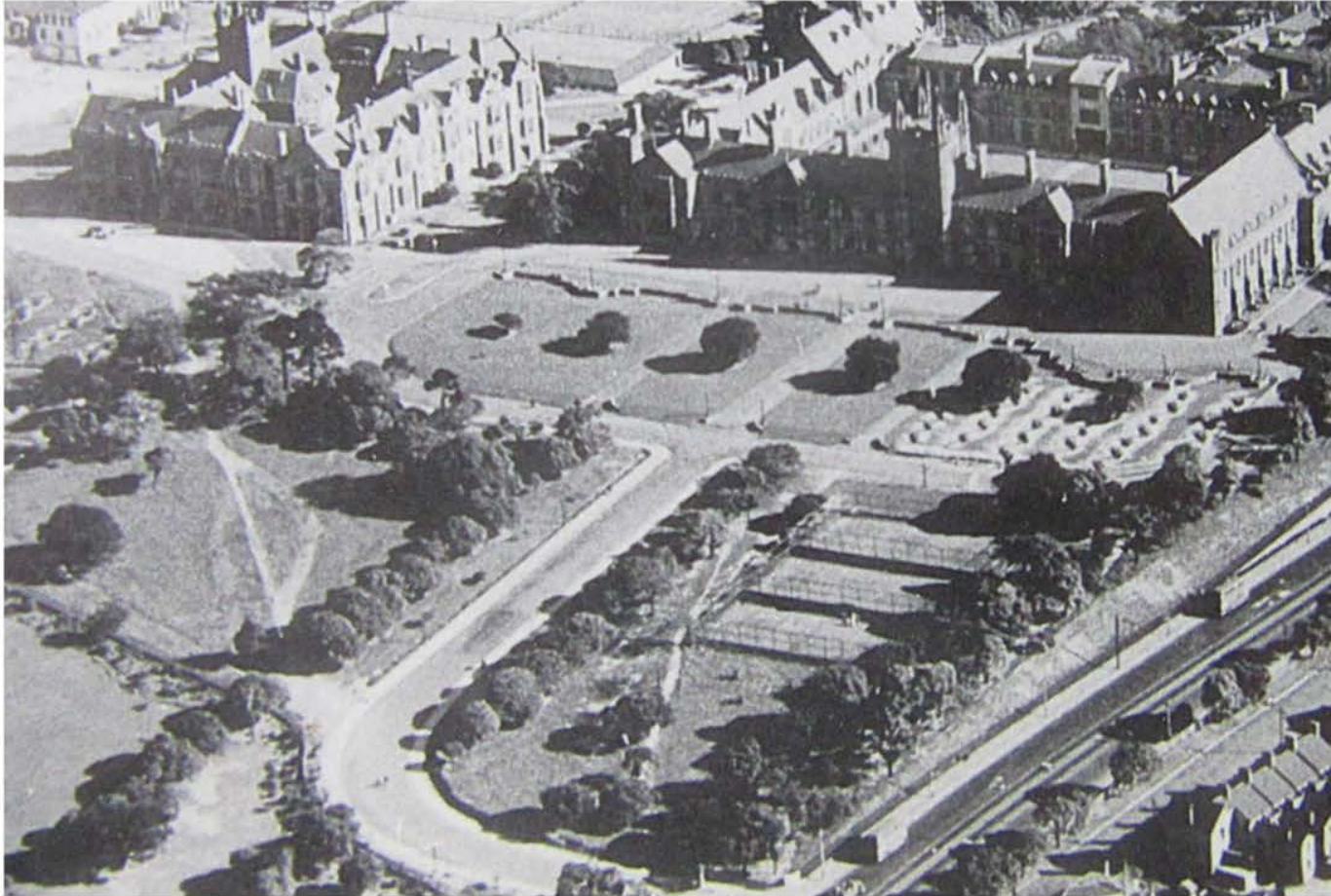
View from Quadrangle Clock Tower c. 1890

---

### **Development of the Approach Reserve (1865 – 1911)**

In 1870 Victoria Park was proclaimed a public park, with the University's Approach Reserve running through it. For the next 50 years, this approach evolved with various layouts of access roads, pathways and changes to the plantings along the main axis.

## Proposed Museum - Landscape Site Assessment (2016)



### 1943 Aerial View

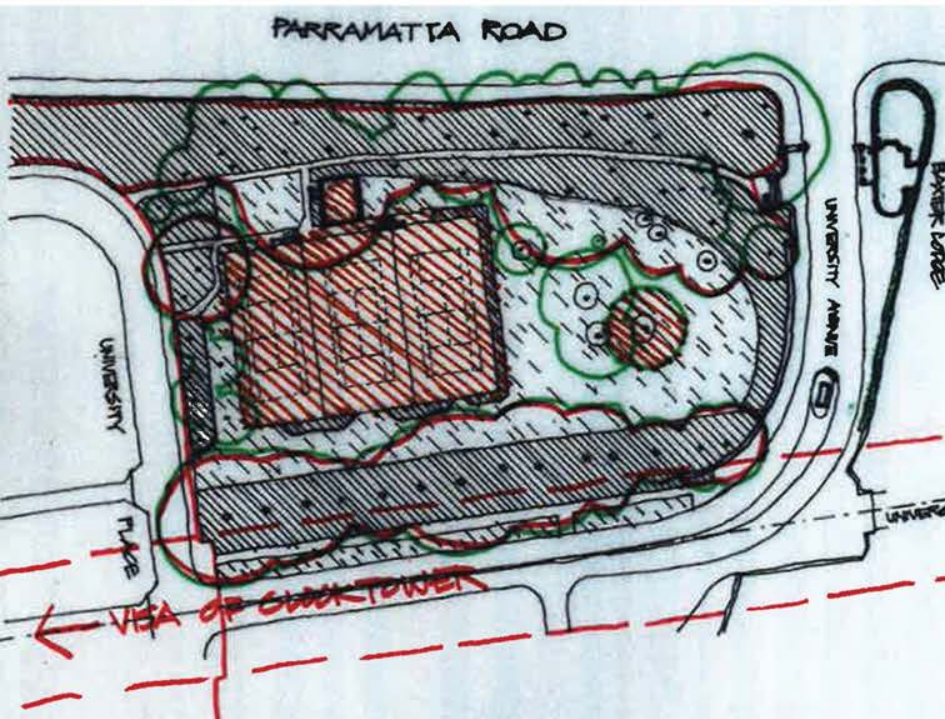
The newly expanded road access off Parramatta Road reduced the curving pedestrian path to a track through the grass with some remnant planting derived from the earlier gardens and now of a more informal nature.

Two other informal tracks were located to the north to link to the tennis courts and to the northern end of University Place.

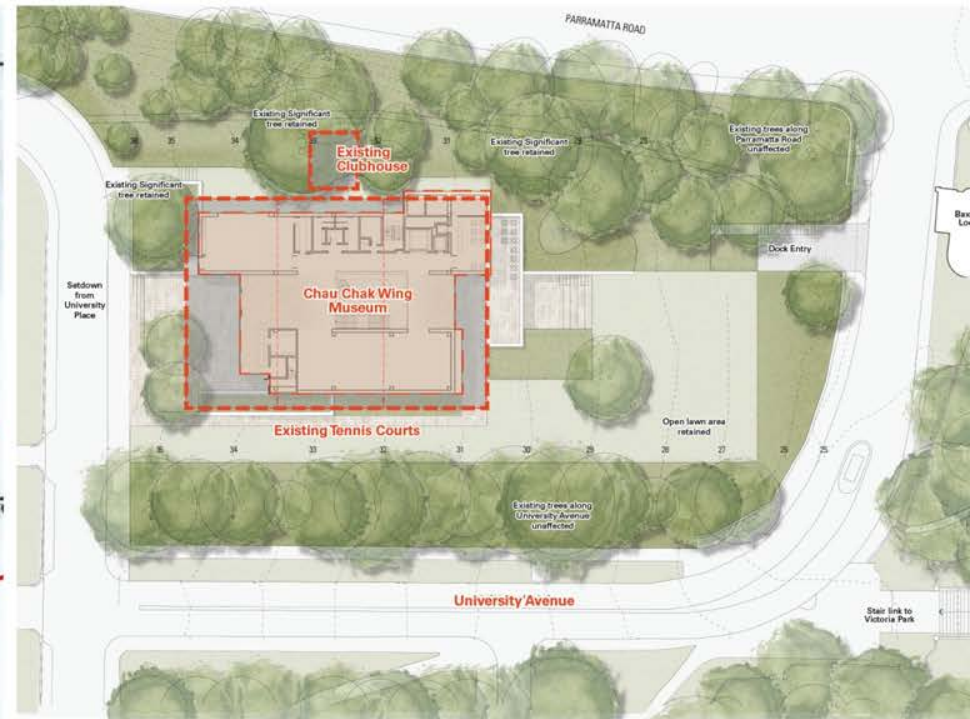
These were rationalised into one concrete path in the early 1950s with a small stepped terrace and marked by a sculpture created by Tom Bass entitled "the student".

## Expanding Campus (1926 – 2016)

The new entrance road from Parramatta Road had a wider carriageway than previous alignments and included footpaths on both sides of the road with a stone kerb.



Assessment from CAB Consulting's Report summarising siting considerations

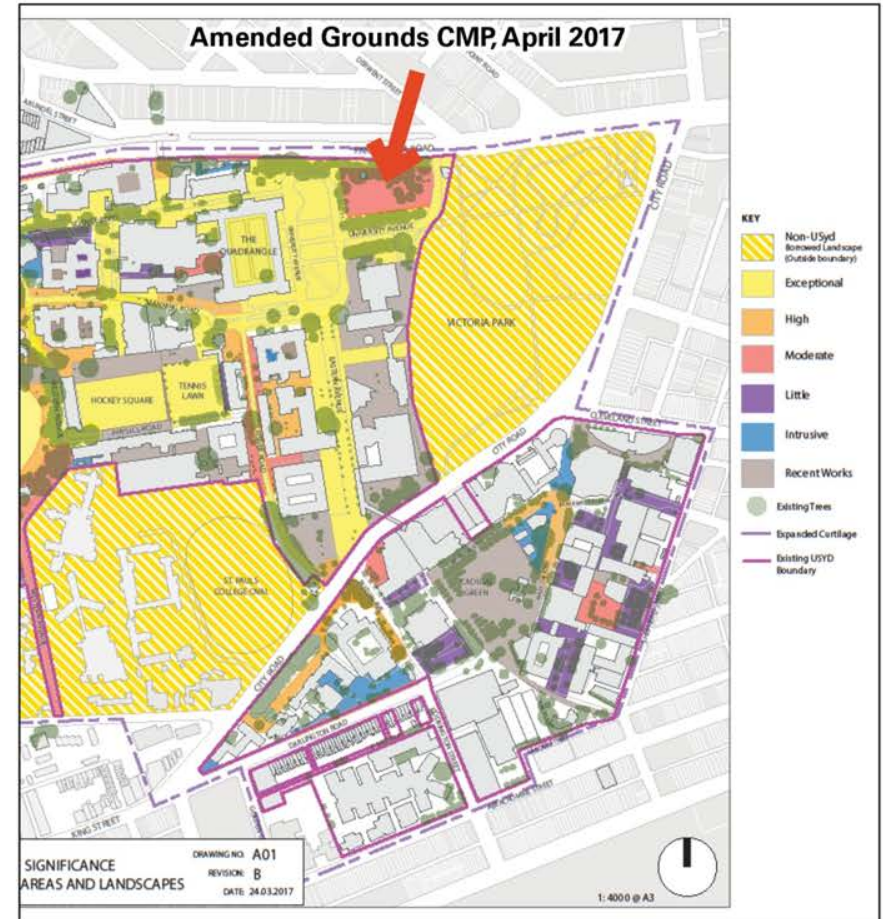
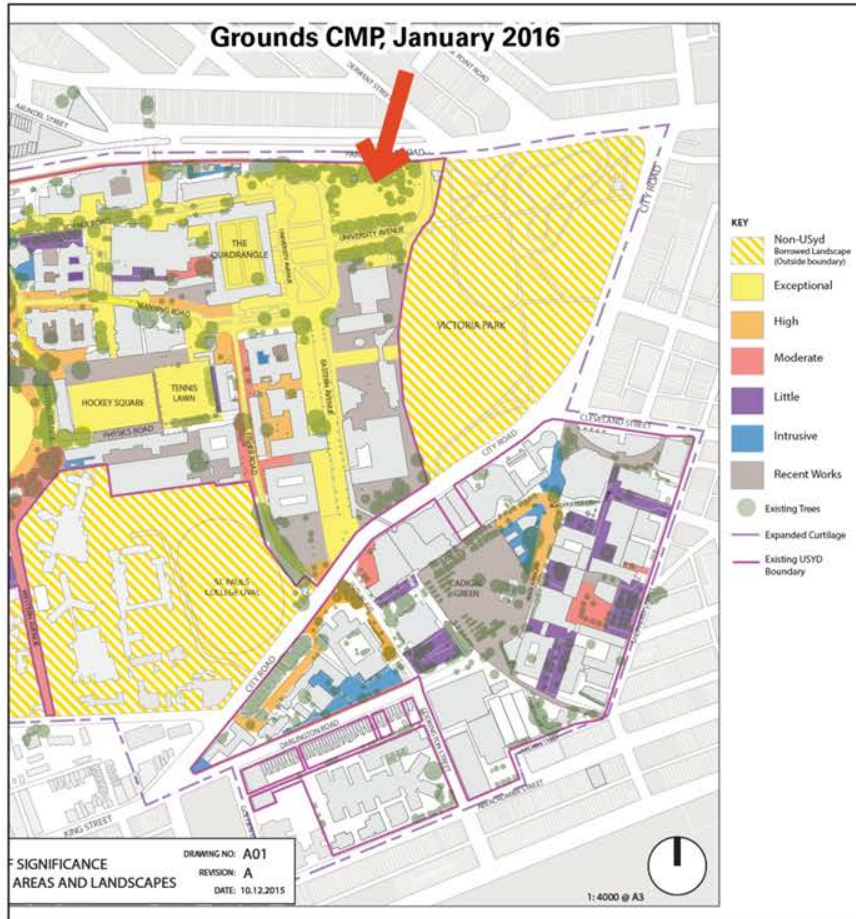


Overlay of Proposed Building and Existing Tennis Courts

## Recommendations for Siting of a Building

An independent landscape assessment determined that the site is suitable for a new building, provided the principal existing tree avenues to north and south were respected and that the new building was below the height of these trees.

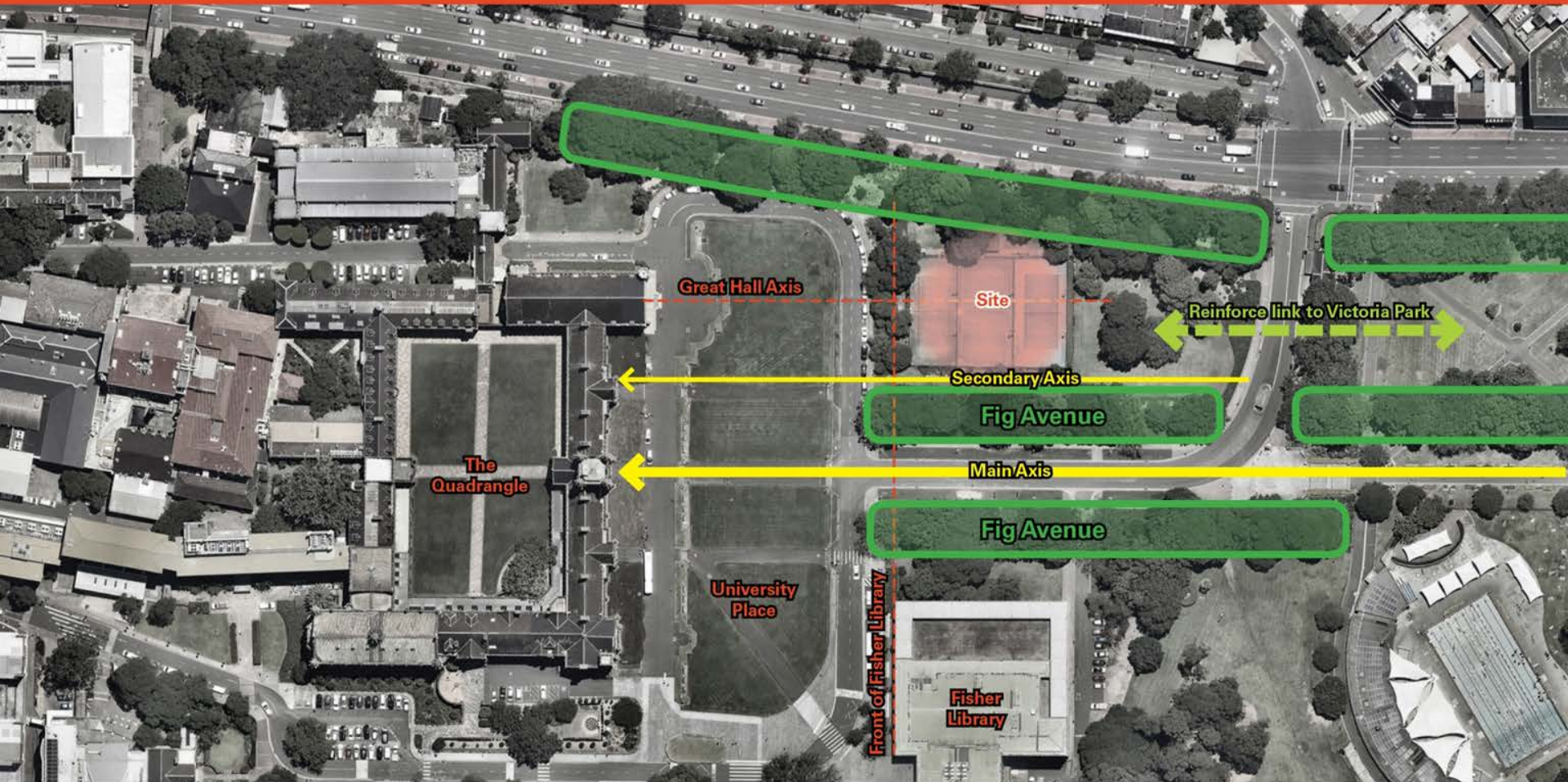
# Proposed Museum - Landscape Site Assessment (2016)



## Plans for the Future (2014 - 2016)

In 2016 an updated University of Sydney Grounds Conservation Management Plan was prepared. This plan recognised the significance of the tree vegetation and the nomination of some individual trees as of exceptional significance, but did not reference the tennis courts directly, or the space created by the trees.

## Proposed Museum - Landscape Site Assessment (2016)



### Plans for the Future (2014 - 2016)

The fig avenue defining the approach avenue is of exceptional significance as a formal landscape element irrespective of the exact species identification.

Despite three changes of plant species since the establishment of the University the formal composition of the approach avenue has been conserved.

# Relationship to Fisher Library - Height & Setbacks



# Relationship to Great Hall & Quadrangle



# Independent View Assessment (2017) - View from Eastern Avenue



# View from Great Hall towards City Centre



Sydney  
Opera  
House

nearmap

Martin  
Place

Sydney  
Tower

Lumiere

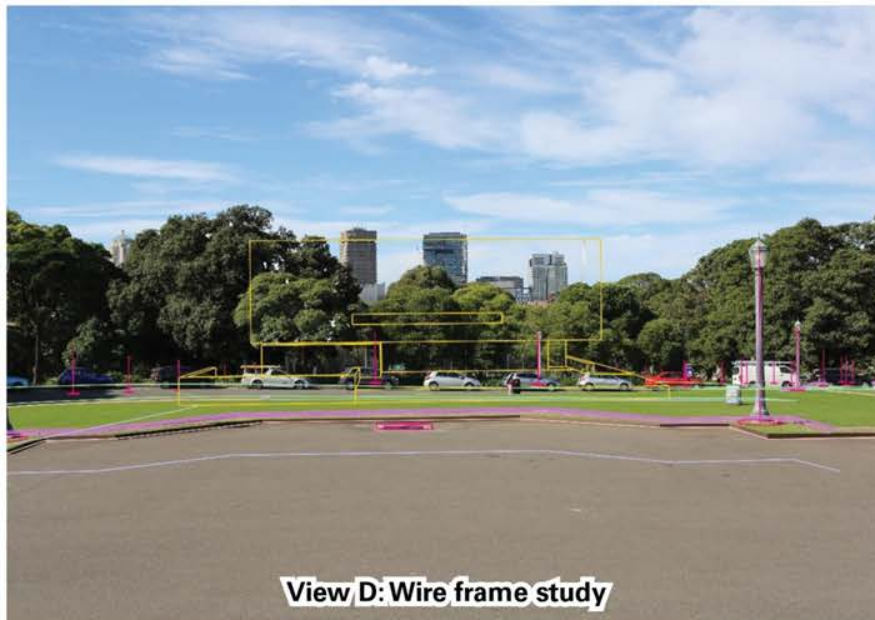
World Square

nearmap

University  
of Sydney

Central  
Park

# Independent View Assessment (2017) - View from the Great Hall



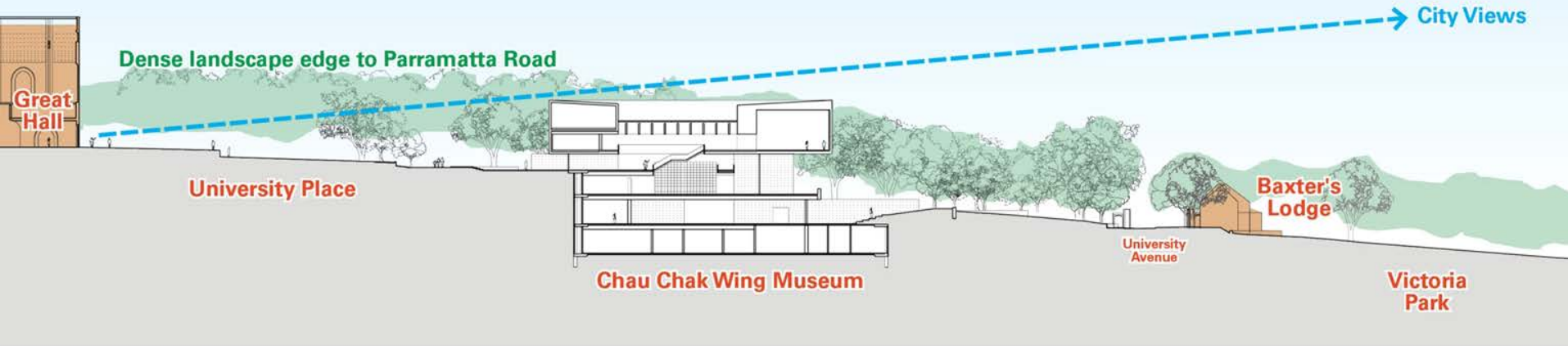
# View from Great Hall towards City Centre



Lumiere

World Square

# Scale Relationship to Great Hall



## Building Height

The building form above ground has been carefully scaled to sit within the existing landscape and below the existing tree canopies, relate to Fisher Library, and retain city skyline views from the Great Hall and Quadrangle.

# Independent View Assessment (2017) - View from Victoria Park



# Materiality

Only the highest quality finishes have been selected, befitting a public building of this importance.

They are hard wearing and will age gracefully:

- > light grey concrete in-situ  
high performance concrete to upper element - creates an appropriate juxtaposition with the similar finish of Fisher Library
- > Lower plinth of sandstone coloured precast which cascades down into the landscape

The project's Independent Design Review Panel has met 5 times and worked through over 12 months of evolving concept designs to arrive at the current, endorsed design.



Insitu Concrete - Main Building



Insitu Concrete - Landscape

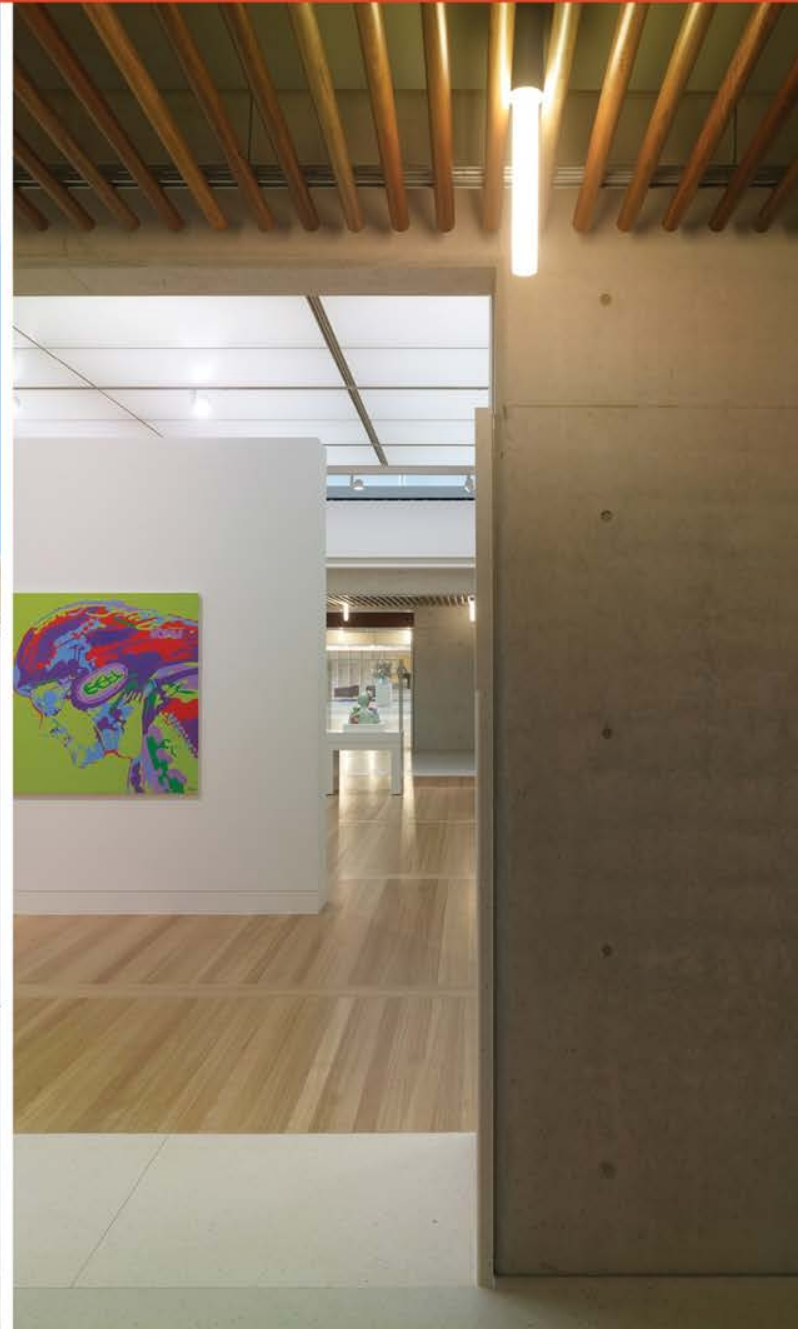


Sandstone



Sandstone coloured precast concrete

# Materiality



## Materiality



Concrete mix prototyping



Sand coloured precast concrete panels

---

## Prototyping & Testing

Considered selection of aggregates, sands and natural oxides can create hardwearing concrete finishes that signal the building has been built to last. Prototyping can refine detailing, simplify constructability and reduce risk.

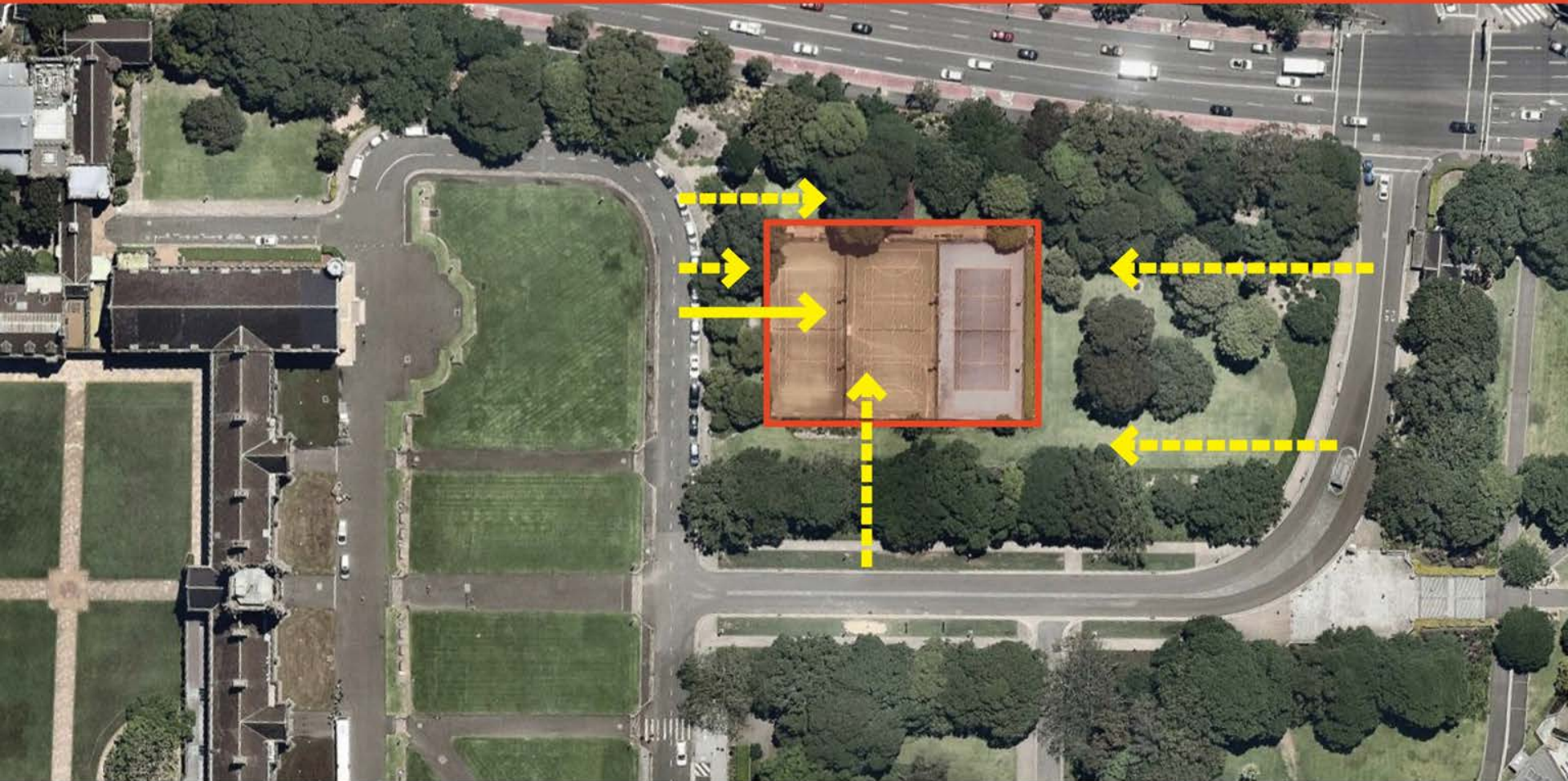


## Landscape and Building

Appropriately scaled layers and blocks, with ledges and terraces to support diverse modes of use. Timeless and simple expression.

Directness in making, where concrete poured on-site is structure and finish.

## Loading Dock



## Museum Servicing & Logistics

A number of vehicle servicing locations have been investigated.  
All garbage bin storage and general loading will be out of public view.

# Loading Dock



## Context

Steeply sloping site - gradient of more than 1:12.

Parramatta Road cutting to the northern side - no access possible.

4.7m clearance required for specialist museum trucks, with separation of collection and non-collection spaces for security, pests and climate control.

# Loading Dock - Other Options Considered



**View 1 - From entry to Campus from Victoria Park, on axis with The Quadrangle, looking towards Parramatta Road - PROPOSED**



# View 2 - From Parramatta Road - PROPOSED



# View 3 - From south side of Baxter's Lodge - PROPOSED



# Appendices

---

## **Views**

Materials from Richard Lamb & Associates Independent  
Review - for discussion, if needed

## View Assessment (2017)



### **Independent View Assessment** Location Plan

Richard Lamb and Associates (RLA) were engaged by the University of Sydney to peer review the view analysis by JPW and to provide certification of the adequacy and accuracy of block photomontages.

## View Assessment (2017)



View A: Original image RLA\_8123



View A: Wire frame study

---

### **View A** Eastern Avenue at south end of University Place

Richard Lamb and Associates (RLA) were engaged by the University of Sydney to peer review the view analysis by JPW and to provide certification of the adequacy and accuracy of block photomontages.

## View Assessment (2017)



View A: Original image RLA\_8123



View A: Block Photomontage

---

### **View A** Eastern Avenue at south end of University Place

Richard Lamb and Associates (RLA) were engaged by the University of Sydney to peer review the view analysis by JPW and to provide certification of the adequacy and accuracy of block photomontages.

## View Assessment (2017)



View B: Original image RLA\_8123



View B: Wire frame study

---

### **View B** South end of the Quadrangle

Richard Lamb and Associates (RLA) were engaged by the University of Sydney to peer review the view analysis by JPW and to provide certification of the adequacy and accuracy of block photomontages.

## View Assessment (2017)



View B: Original image RLA\_8123



View B: Block Photomontage

---

### View B South end of the Quadrangle

Richard Lamb and Associates (RLA) were engaged by the University of Sydney to peer review the view analysis by JPW and to provide certification of the adequacy and accuracy of block photomontages.

## View Assessment (2017)



View C: Original image RLA\_8123



View C: Wire frame study

---

### **View C** Centre of The Quadrangle

Richard Lamb and Associates (RLA) were engaged by the University of Sydney to peer review the view analysis by JPW and to provide certification of the adequacy and accuracy of block photomontages.

## View Assessment (2017)



View C: Original image RLA\_8123



View C: Block Photomontage

---

### **View C** Centre of The Quadrangle

Richard Lamb and Associates (RLA) were engaged by the University of Sydney to peer review the view analysis by JPW and to provide certification of the adequacy and accuracy of block photomontages.

## View Assessment (2017)



View CB: Axial view from View C, Original image RLA-8157



View CB: Wire frame study

---

### View CB University Avenue Axis

Richard Lamb and Associates (RLA) were engaged by the University of Sydney to peer review the view analysis by JPW and to provide certification of the adequacy and accuracy of block photomontages.

## View Assessment (2017)



View CB: Axial view from View C, Original image RLA-8157



View CB: Block Photomontage

---

### View CB University Avenue Axis

Richard Lamb and Associates (RLA) were engaged by the University of Sydney to peer review the view analysis by JPW and to provide certification of the adequacy and accuracy of block photomontages.

## View Assessment (2017)



View G: Original image RLA-8092



View G: Wire frame study

---

### View G Parramatta Road

Richard Lamb and Associates (RLA) were engaged by the University of Sydney to peer review the view analysis by JPW and to provide certification of the adequacy and accuracy of block photomontages.

## View Assessment (2017)



View G: Original image RLA-8092



View G: Block Photomontage

---

### View G Parramatta Road

Richard Lamb and Associates (RLA) were engaged by the University of Sydney to peer review the view analysis by JPW and to provide certification of the adequacy and accuracy of block photomontages.

---

## **Heritage Views**

Materials from Richard Lamb & Associates Independent  
Review - for discussion, if needed

# Heritage Views Assessment (2017)



## Heritage Views Assessment Location Plan

The University engaged an independent consultant (Richard Lamb) to review

# Heritage Views Assessment (2017)



**Location 1; View west along Parramatta Road from near Derwent Lane circa 1930.**

**This view is possibly taken from an elevated balcony of the University Hall building.**

City of Sydney Archives, Sydney Reference Collection SRC3321



**Location 1; View west along Parramatta Road from a similar location as shown above.**

**The projected awning and balustrade fretwork on the building in the immediate foreground match that of the building in the mid ground of Plate 1.**

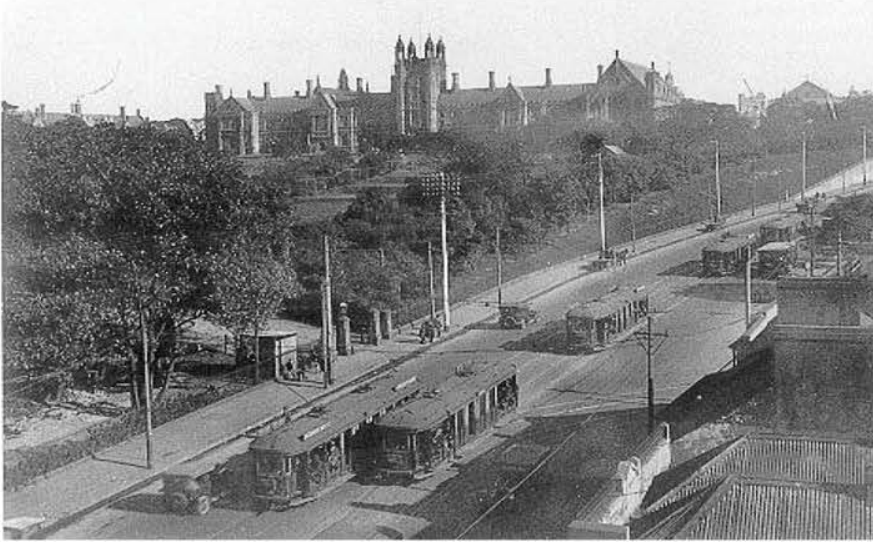
**The subject site is not visible and the proposed building would not be visible in this view.**

---

## **Location 1** Parramatta Road

The subject site is not visible and the proposed building would not be visible in this view.

# Heritage Views Assessment (2017)



**Location 2; View west along Parramatta Road from an elevated location possibly from the University Hall circa 1920**

Source: University of Sydney Archives: G3\_224\_1018



**Location 2; View west along Parramatta Road from the west corner of Glebe Point Road and Parramatta Road outside the building (former University Hotel).**

**The subject site is not visible and the proposed building would not be visible in this view.**

---

## **Location 2** Parramatta Road

The subject site is not visible and the proposed building would not be visible in this view.

# Heritage Views Assessment (2017)



**Location 3; View south-west from the near the corner of Broadway and Bay Street, opposite City Road (formerly Newtown Road) circa 1874**

Source: State Library NSW, Ref 412976



**Location 3; View west towards the Intersection of City Road from the north-east intersection of Broadway and Bay Street from outside the former Grace Brothers Building.**

**The subject site is not visible and the proposed building would not be visible in this view.**

---

## **Location 3** Parramatta Road

The subject site is not visible and the proposed building would not be visible in this view.



**Location 4; View west across Lake Northam towards the Great Hall circa 1931**

City of Sydney Archives Sydney Reference Collection SRC9683



**Location 4; View west across Lake Northam towards the Great Hall.**

The subject site is partly visible however the majority of the proposed building is unlikely to be visible in this view.

Parts of heritage items that are visible in this view, will remain unaffected by the proposed development.

---

## **Location 4** From Lake Northam

The subject site is partly visible however the majority of the proposed building is unlikely to be visible in this view.

Parts of heritage items that are visible in this view, will remain unaffected by the proposed development.

# Heritage Views Assessment (2017)



**Location 5; View west towards the Quad and Great Hall circa 1927**  
Source: Sydney University Archives: G3\_224\_MF374\_0138



**Location 5; View west towards the location of the Quad and Great Hall.**

The majority of the subject site is not visible in this view and the proposed building is unlikely to be visible in this view.  
Parts of heritage items that are visible in this view, will remain unaffected by the proposed development.

---

## **Location 5** From Lake Northam

The majority of the subject site is not visible in this view and the proposed building is unlikely to be visible in this view.

Parts of heritage items that are visible in this view, will remain unaffected by the proposed development.

# Heritage Views Assessment (2017)



**Location 6; View west along Main Drive to the Quad circa 1870**

Source: University of Sydney Archives: G3\_224\_0101



**Location 6; View west along Main Drive east of the low point in topography and south of Lake Northam**

**The subject site is not visible in this view and the proposed building would not be visible in this view.**

**Parts of heritage items that are visible in this view, will remain unaffected by the proposed development.**

---

## **Location 6** From Lake Northam

The subject site is not visible in this view and the proposed building would not be visible in this view.

Parts of heritage items that are visible in this view, will remain unaffected by the proposed development.



**Location 7; View north-west across Victoria Park, close to City Road (former Newtown Road) circa 1880**

Source: Sydney University Archives: G3\_224\_MF374\_0055



**Location 7; View north-west across Victoria Park, a carpark entrance from City Road opposite Myrtle Street.**

**The subject site is not visible in this view and the proposed building would not be visible in this view.**

**Parts of heritage items that are visible in this view, will remain unaffected by the proposed development.**

---

## **Location 7** North west from Victoria Park

The subject site is not visible in this view and the proposed building would not be visible in this view.

Parts of heritage items that are visible in this view, will remain unaffected by the proposed development.

# Heritage Views Assessment (2017)



**Location 8; View west along Broadway approximately opposite Jones Street circa 1900, possibly including the spire of St Benedict's Catholic Church**

Source: Sydney University Archives: G3\_224\_2803



**Location 8; View west along Broadway from outside UTS and west Jones Street including St Benedict's Catholic Church.**

**The subject site is not visible in this view and the proposed building would not be visible in this view.**

---

## **Location 8** From Broadway

The subject site is not visible in this view and the proposed building would not be visible in this view.

# Heritage Views Assessment (2017)



**Location 9; View west along Broadway approximately opposite the intersection with Carlton Street circa 1890**

City of Sydney Archives Sydney Reference Collection SRC6203



**Location 9; View west along Broadway from outside UTS. A cameo view of the Clock Tower is visible above the rubbish bin in the mid-ground composition.**

**The subject site is not visible in this view and the proposed building would not be visible in this view.**

**Parts of heritage item that is visible in this view, will remain unaffected by the proposed development.**

---

## **Location 8** From Broadway

The subject site is not visible in this view and the proposed building would not be visible in this view.

Parts of heritage item that is visible in this view, will remain unaffected.

# Heritage Views Assessment (2017)



**Location 10; View west along Broadway from the south-east Regent Street and George Street circa 1947**

City of Sydney Archives Sydney Reference Collection SRC1868



**Location 10; View west along Broadway from the south-east corner of Regent Street and George Street**

**The subject site is not visible in this view and the proposed building would not be visible in this view.**

---

## **Location 10** From Broadway

The subject site is not visible in this view and the proposed building would not be visible in this view.

# Heritage Views Assessment (2017)



**Location 11; View west along Cleveland Street east of Balfour Street circa 1934**

City of Sydney Archives Sydney Reference Collection SRC4607



**Location 11; View west along Cleveland Street east of Balfour Street. The uppermost forms of the Clock Tower are visible above the University building that is currently covered with hoarding.**

**The subject site is not visible in this view and the proposed building would not be visible in this view.**

**Parts of heritage items that are visible in this view, will remain unaffected by the proposed development.**

---

## **Location 11** From Cleveland Street

The subject site is not visible in this view and the proposed building would not be visible in this view.

Parts of heritage items that are visible in this view, will remain unaffected by the proposed development.

# Heritage Views Assessment (2017)



**Location 12: View south across Parramatta Road to Baxter Lodge**

Source: The University of Sydney Proposed Museum Site Landscape Assessment, 2016



**Location 12; View south to the Parramatta Road entrance from the north-east corner of Derwent Street**

**The majority of the subject site is screened by vegetation and is not visible in this view.**

**The majority of the proposed building will not be visible in this view.**

**Parts of heritage items including the Fisher Library that are visible in this view, will remain unaffected by the proposed development.**

---

## **Location 12** From Parramatta Road

The majority of the proposed building will not be visible in this view.

Parts of heritage items including the Fisher Library that are visible in this view, will remain unaffected by the proposed development.

# Heritage Views Assessment (2017)



**Location 13; View east to Sydney Town from the near the Quad building, circa 1869-1874**

Source: State Library, NSW, Ref 413009



**Location 13; View east to the Sydney CBD along the axes of Main Drive in alignment with the Clock Tower**

**The subject site is partly screened by vegetation in this view.**

**The majority of the proposed building will not be visible in this view.**

**The axial view and presence of CBD buildings will remain unaffected by the proposed development.**

---

## **Location 13** From Parramatta Road

The subject site is partly screened by vegetation in this view.

The majority of the proposed building will not be visible in this view.

The axial view and presence of CBD buildings will remain unaffected by the proposed development.



THE UNIVERSITY OF  
**SYDNEY**

## **Chau Chak Wing Museum**

---

**NSW Heritage Council Briefing**

1 November 2017