

OPTION 10

JPW-SK-0000
 AREA OPTION 10
 UPPER LEVEL PLAN
 23-01-2017

DW MARKUPS FOR IMPROVEMENTS 9.6m GRID.

- All columns = 600 x 600
 - GRID IS FINISHES of concrete
 STRUCTURES CAN BE MARKED
 TO SURF. IF NEED BE.

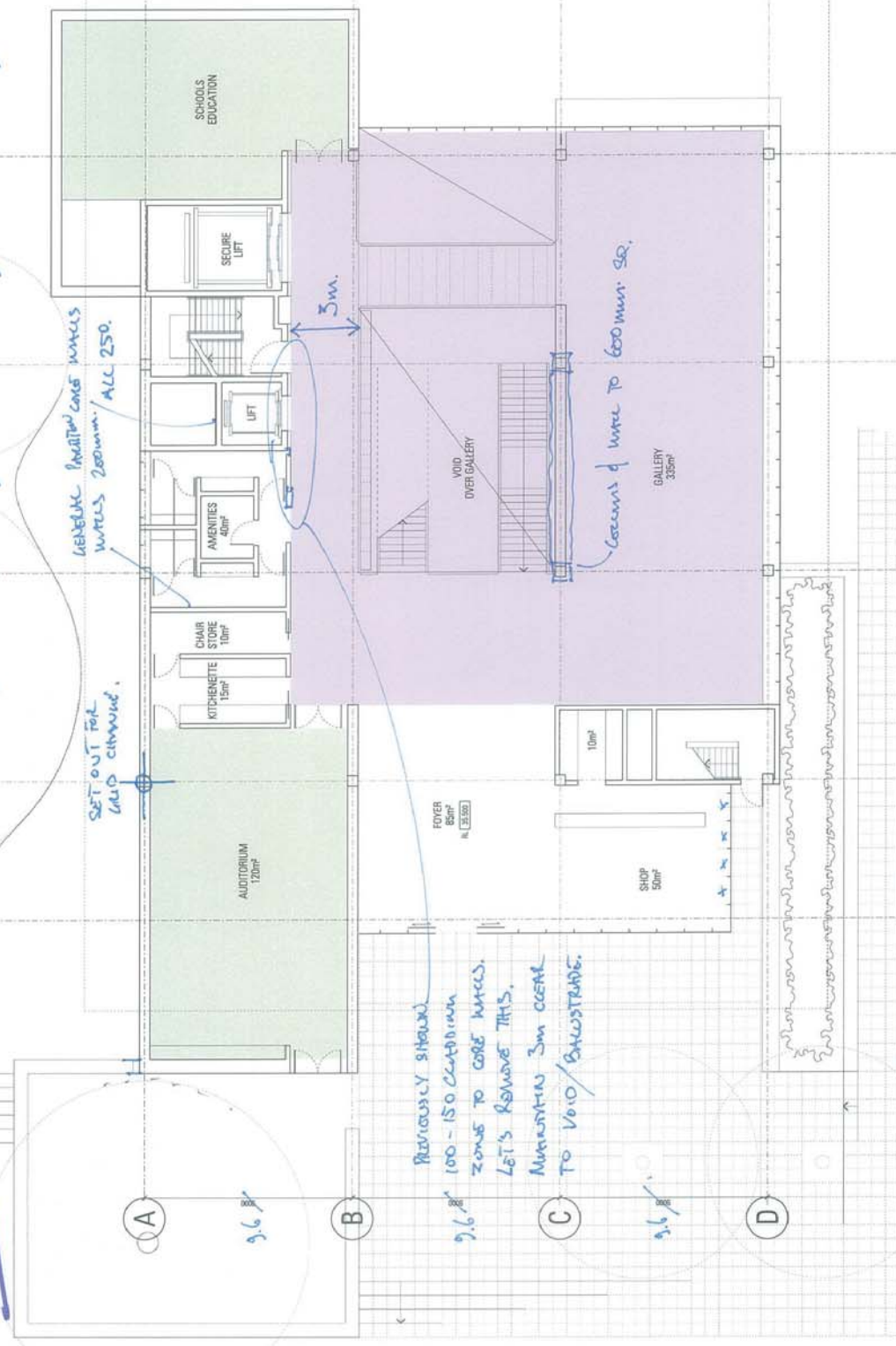
① UPDATE GRID
 - SET UP FACTOR GRID ON
 SPACING LEVEL?

② DRAWING AMENDMENTS
 - CURRENTLY THINGS DRAWN
 DIFFERENTLY OR DIFFERENT
 DRAWINGS FOR PRESENTATION.
 ↳ NEED TO UNIFY DRAWING
 SET.
 - COLLECT CONTRACTS / SIZE REDUCES
 OR ELEMENT.

③ Area Carriage
 - ELEVATIONS ARE NOT EASY,
 HAVE TO BE CONCRETE
 ABOUT MINIMUM GFA.

④ SERVICES - LOSSES
 - CORE AREA & EFFICIENCIES
 - LIFT ARE.

⑤ FINISHES → EVERYTHING SHOULD BE
 SET AT TO THE 1.2m GRID
 OR 600 / 300 METERS WITHIN.

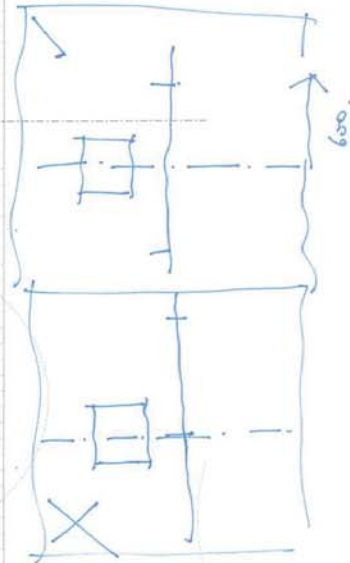


GENERAL PARTITION WALLS
 WIDTHS 200mm / ALL 250.

SET OUT FOR
 GRID CHANGE.

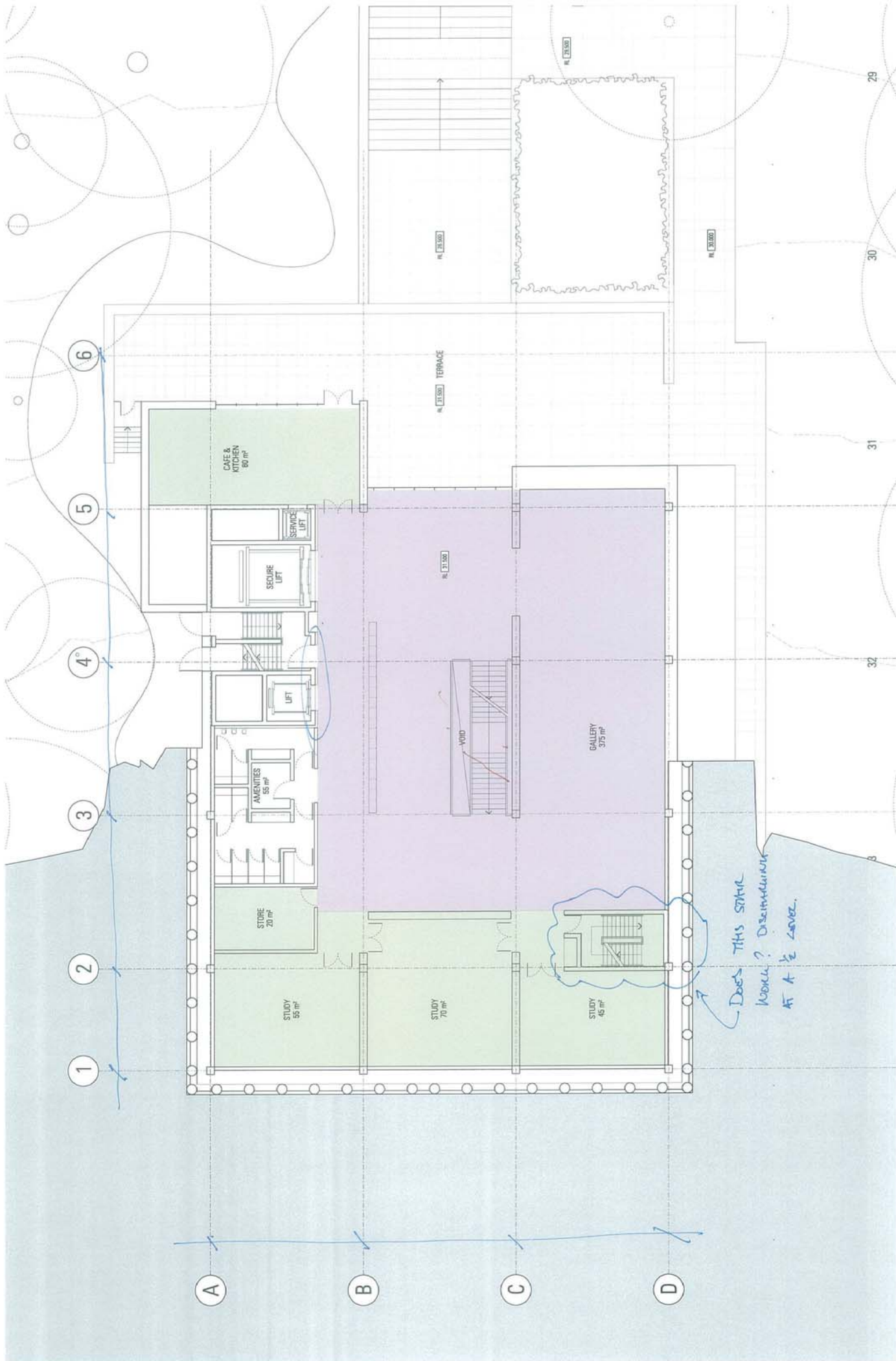
PREVIOUSLY SHOWED
 100-150 CENTIMETER
 ZONES TO CORE WALLS.
 LET'S REMOVE THIS.
 MAINTAIN 3m CENTR.
 TO VOID/BALUSTRADE.

GRIDING SET OUT ON THIS IS
 GRID? APPROXIMATE
 ↳ WILL BE DETERMINED
 BY ELEVATIONS.

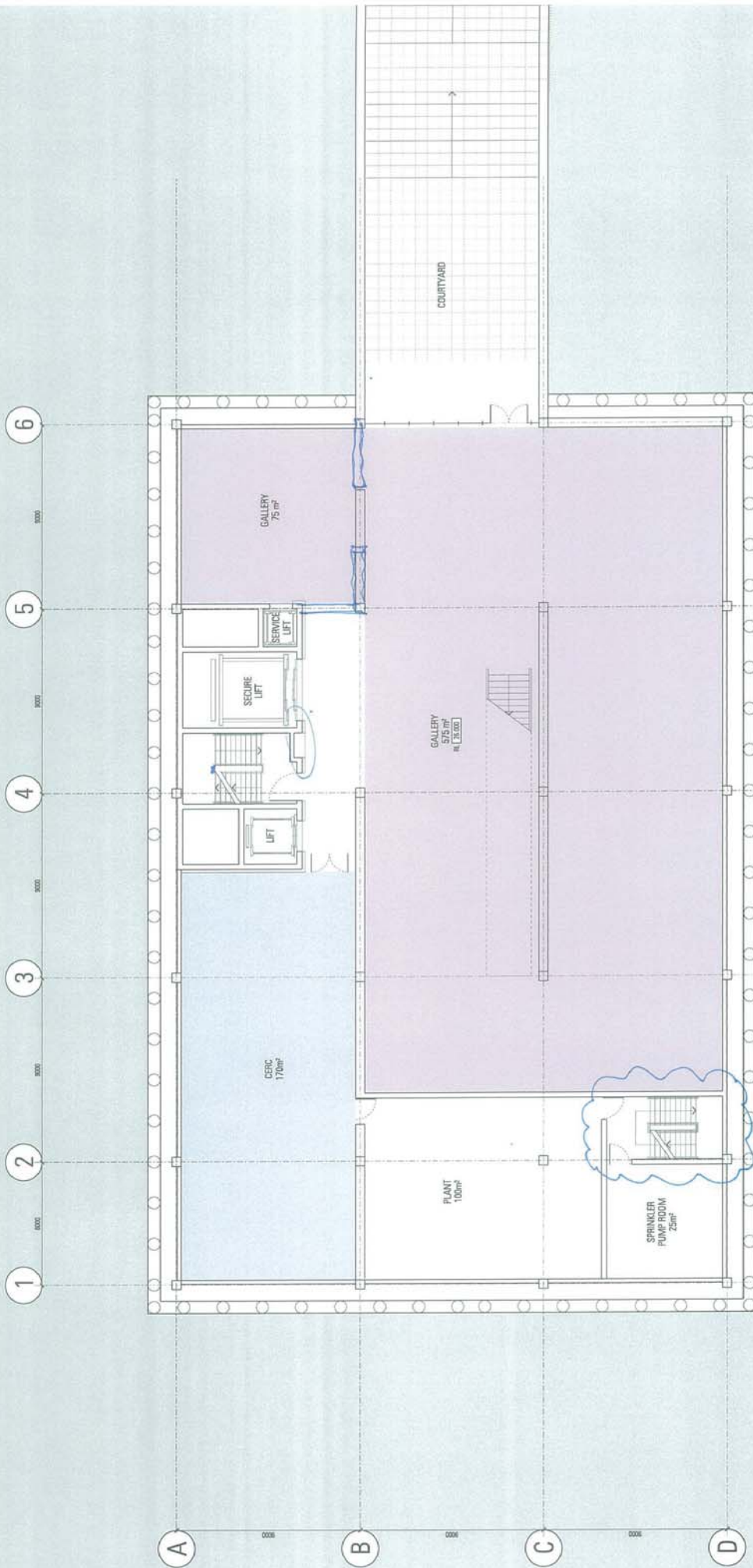


OPTION 10

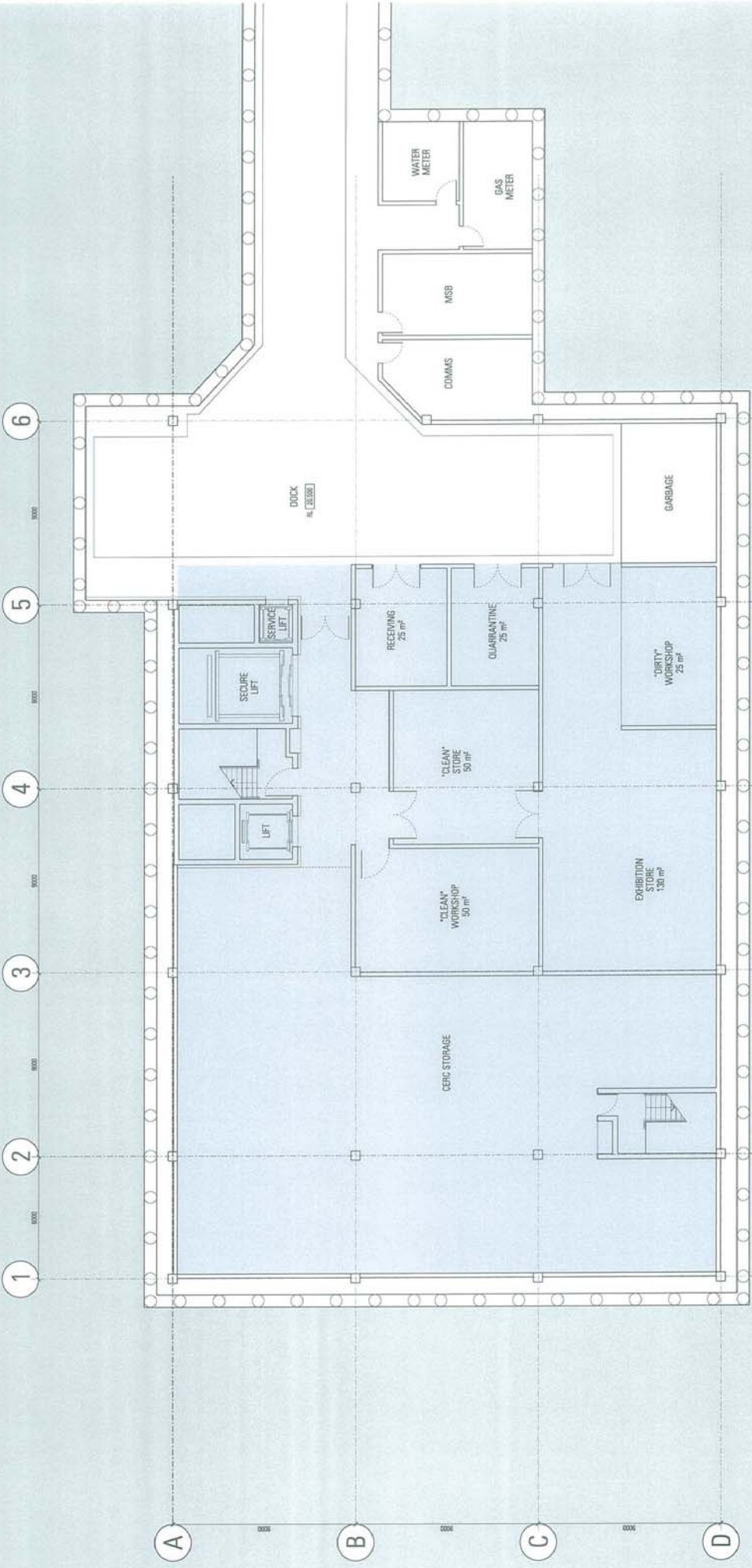
JPW-SK-0000
 AREA OPTION 10
 GROUND LEVEL PLAN
 23-01-2017



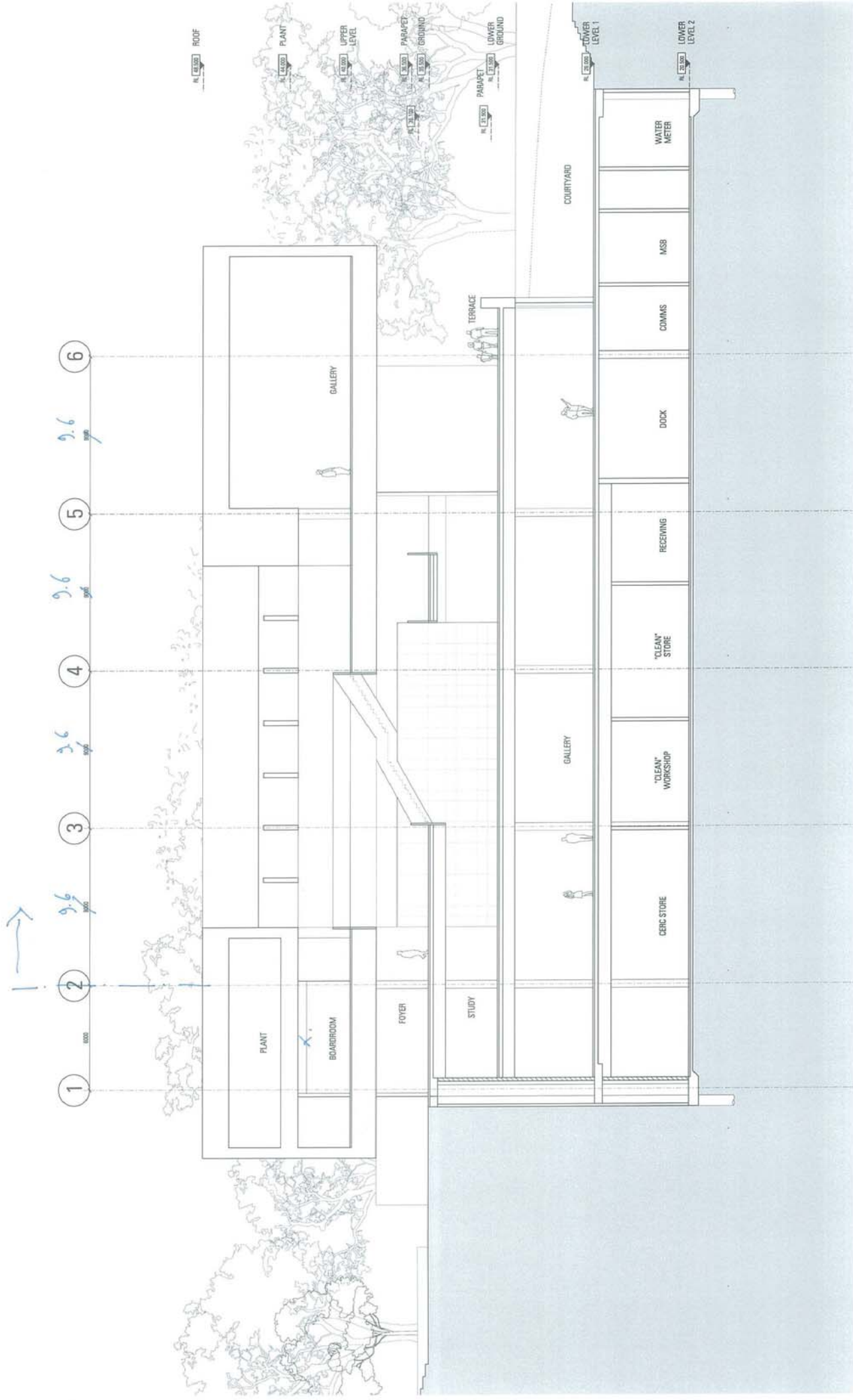
OPTION 10



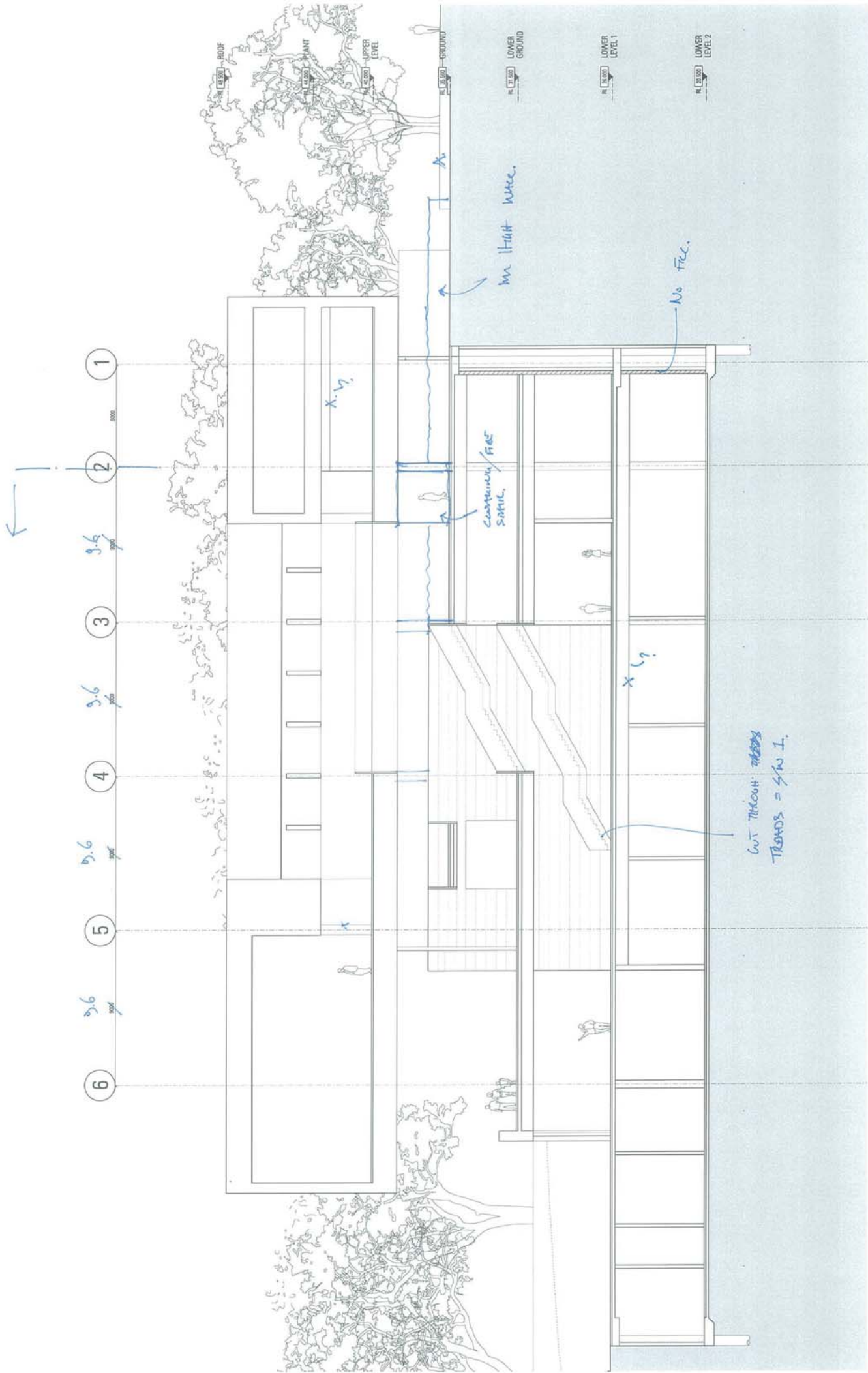
OPTION 10



OPTION 10

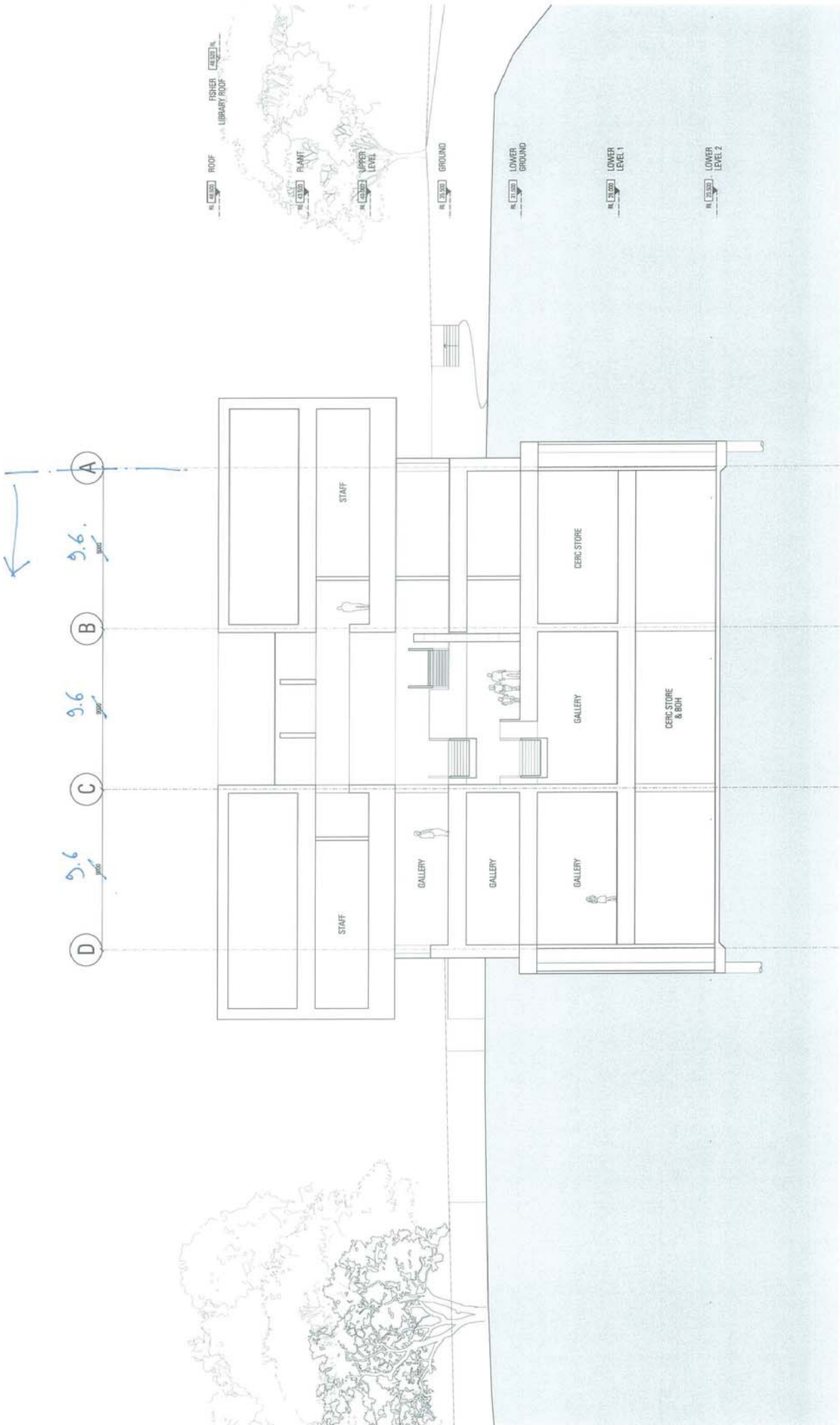


OPTION 10



128

OPTION 10



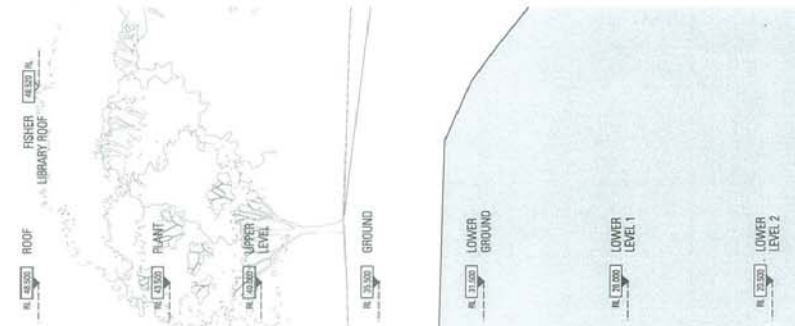
←

A 9.6' 3/8"

B 9.6' 3/8"

C 9.6' 3/8"

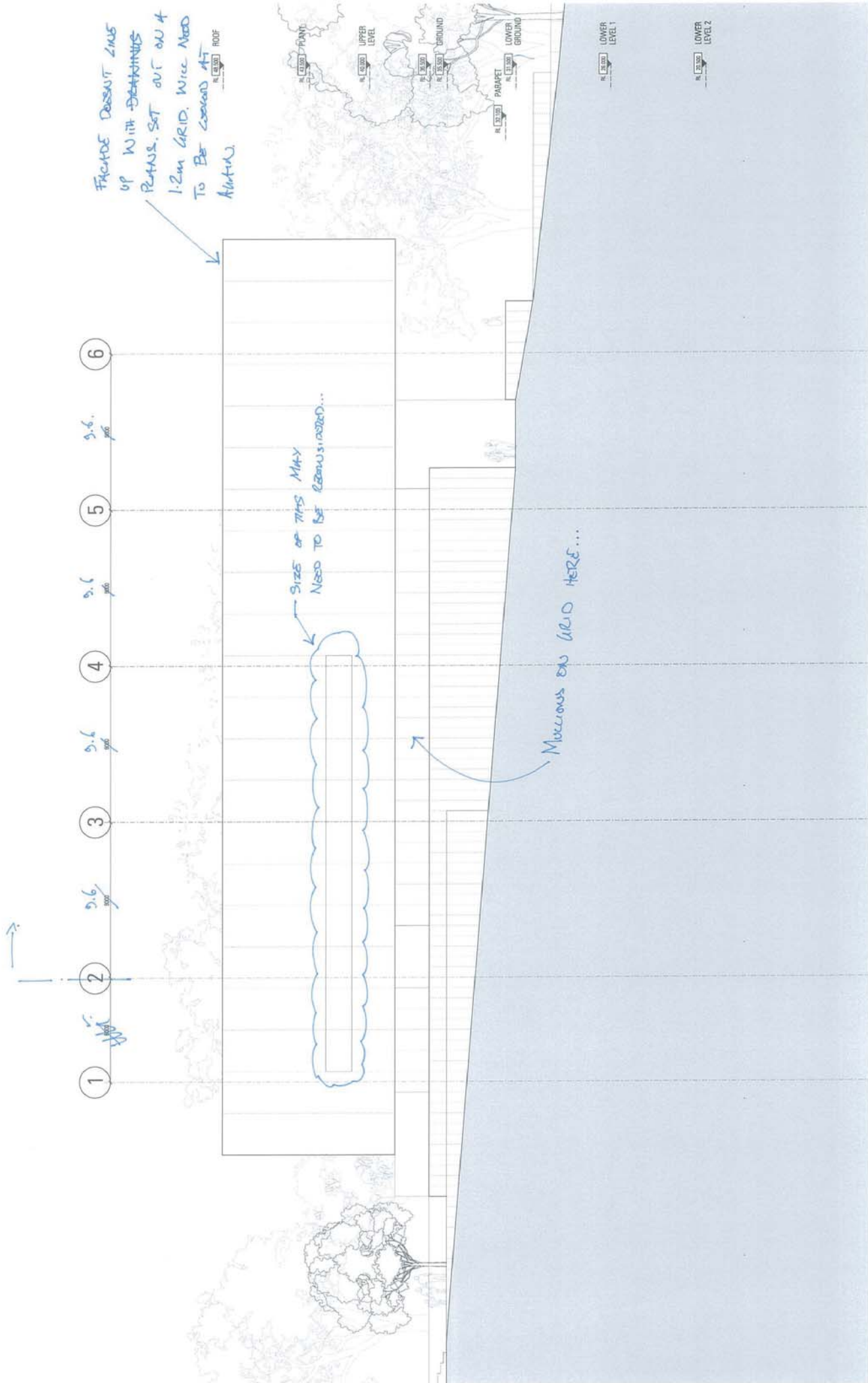
D



OPTION 10

10

1:200 @ A3
 23-01-2017



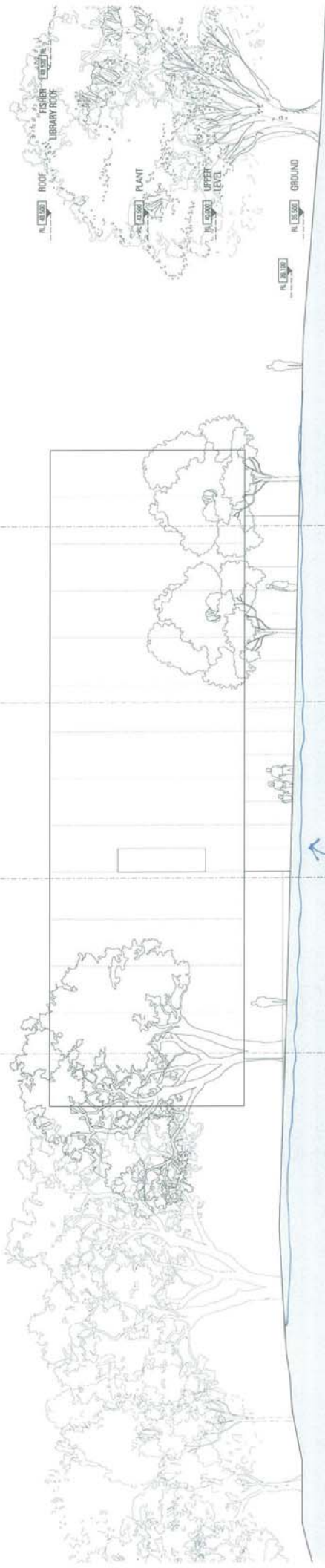
FACADE DOESN'T LINE UP WITH DETAILINGS
 REVISIONS. SET OUT ON A
 1.2m GRID. WIRE NEED TO BE
 COORD AT ANTIWA.

SIZE OF TIPS MAY NEED TO BE REANUSIAZED...

MISSIONS EXH. GRID HERE...

OPTION 10

THIS ELEVATION WILL NOT BE
 PART OF PRESENTATION MATERIAL
 (PROBABLY!) BUT FINISHES WILL
 NEED TO BE SET OUT FOR
 PLAN & 3D MODEL (ROUNDES).



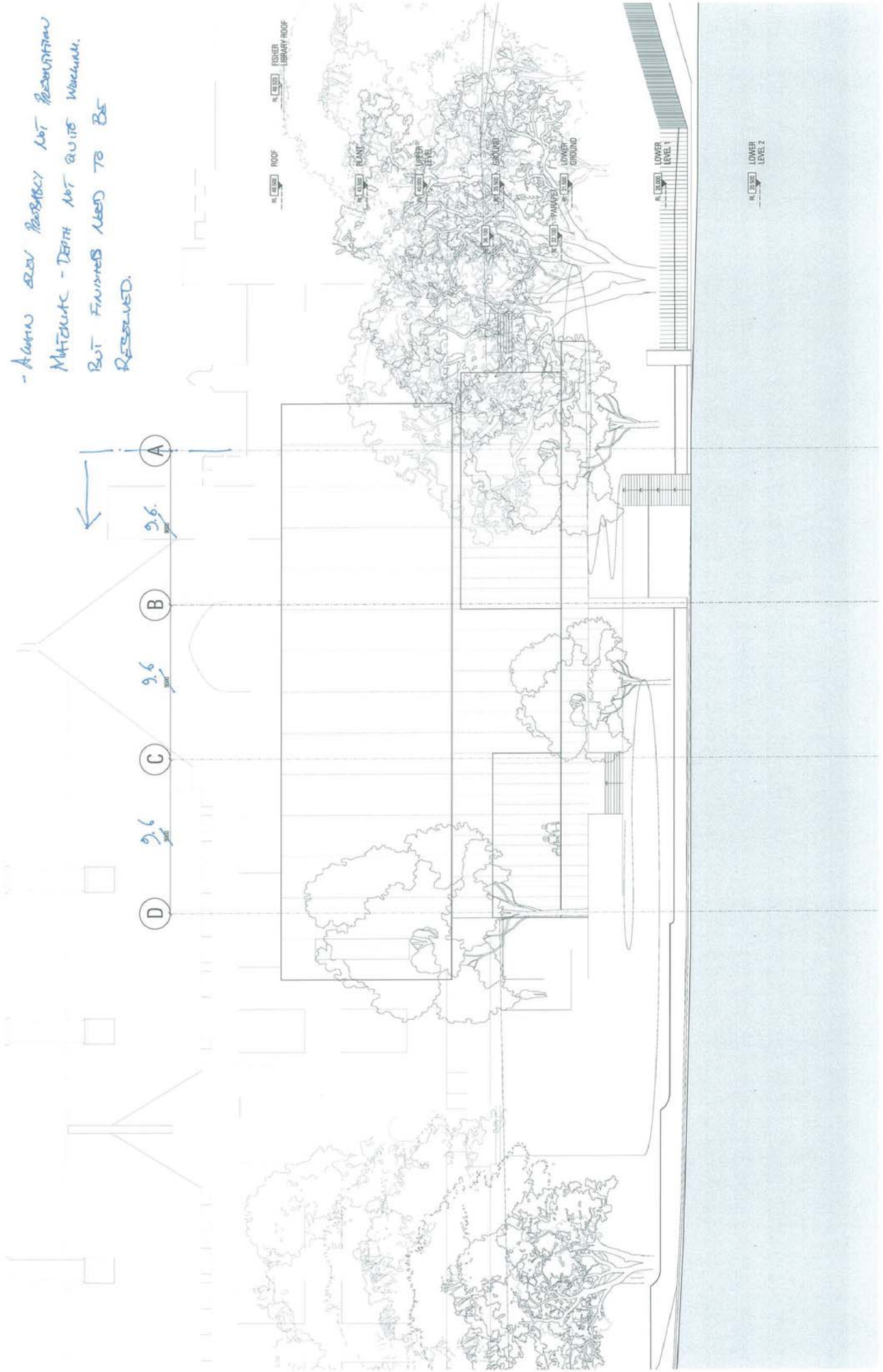
ELEVATION SHOULD BE CHANGED TO
 CUT THROUGH SOURCE INFESTED
 OF MUSEUM.

OPTION 10

JPW-SK-0000

AREA OPTION 10
 WEST ELEVATION
 14-12-2016
 1:200 @ A3

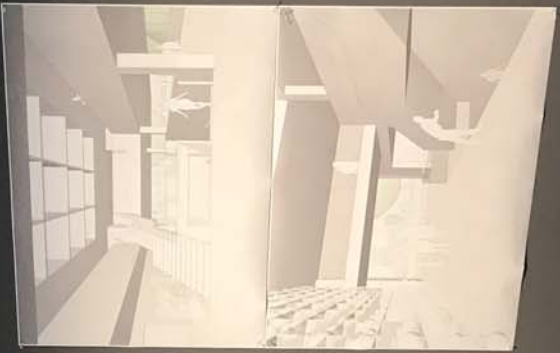
- ALTHOUGH SEEN POSSIBLY NOT REPRESENTATION
 MATCHLINE - DETAIL NOT QUITE WORKING.
 BUT FINISHES NEED TO BE
 REEVALUED.



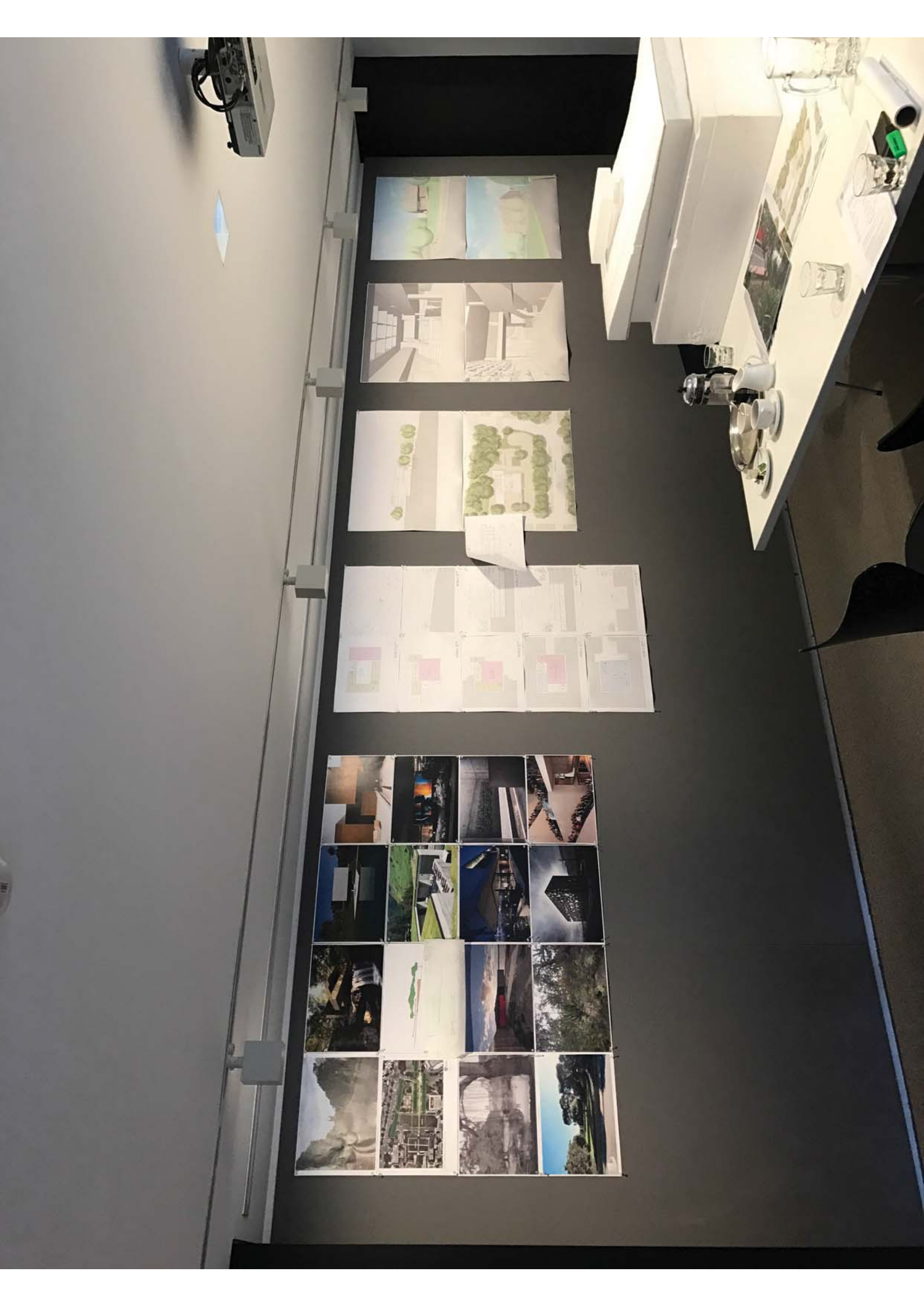
OPTION 10

JPW-SK-0000

AREA OPTION 10
 EAST ELEVATION
 14-12-2016









THE UNIVERSITY OF
SYDNEY

DESIGN EXCELLENCE REPORT
Chau Chak Wing Museum

Appendix G – JPW Architectural Concept Design Statement

Chau Chak Wing Museum Architectural Concept Design Statement



Project Vision

The Chau Chak Wing Museum presents the University of Sydney with a unique opportunity to create a new cultural venue and meeting place for ideas with a local, national and global reach. Collocating diverse collections and learning facilities in a purpose-built building will equip the University to further its leading role across diverse disciplines and research streams.

Response to Site

The building is a considered response to a unique site.

Despite a prominent location close to the main Campus entry off Parramatta Road, the site is heavily screened by planting along this boundary. Similarly, views to and from Victoria Park, which is the main pedestrian access point on the eastern side of the Campus, are defined by avenues of mature figs and rolling lawns.

The site is directly to the east of the Great Hall, and the building's position and scale has been carefully modulated to retain city skyline vistas from the Great Hall and The Quadrangle.

JPW

JOHNSON PILTON WALKER

Chau Chak Wing Museum Architectural Concept Design Statement

The building footprint has been set within a zone defined by tree protection zones to the north and south sides.

Chau Chak Wing Museum Architectural Concept Design Statement

Building Form and Functional Planning

Given the site restrictions regarding height and building footprint, the building planning has been organized to balance uses above and below ground - more than 50% of the building is below the existing ground level to maximize continuity and legibility of the ground plane.

The building has been designed from the inside out, to provide a range of spaces for display and research that are suited to the University's collections and objectives to generate more interaction and engagement between collections, visitors and research.

Visitor Experience

The design has been informed by a desire to create a unique series of spatial experiences for visitors and maximize flexibility for display.

The arrival sequence is an important part of any experience, and creates a transition between the large, open space of University Place and Eastern Avenue, and the more intimate exhibition spaces within the building.

Materiality

Universities are enduring institutions where generations of endeavor build a body of knowledge and expertise that is continuously reinvigorated by critical enquiry.

A Campus might be most simply be described as a physical place - a site with various buildings distributed across it, where learning and research activities are undertaken.

However, this basic description does not capture the role individual buildings might play in defining the character of a Campus, nor the human 'software' which is also an integral component of the soul of a Campus.

Sydney University's history and aspirations for excellence can be read through its buildings - aspirations for the institution first realized in sandstone, then brick and most recently steel, glass and concrete. In almost all cases, the material expression of buildings across the Campus has projected a confident, contemporary aesthetic of the time.

In this aspect, the Chau Chak Wing Museum Building is aligned with its neighbors. Concrete has been used as the primary material as it enables structure and cladding to be combined in

JPW

JOHNSON PILTON WALKER

Chau Chak Wing Museum Architectural Concept Design Statement

a single material, making the engineering efficient and the construction process straightforward.

Concrete, unlike some other contemporary materials which are highly machined or manufactured on an industrial scale, almost always shows the investment made in its making. This honesty of expression, whether highly controlled or comfortable with its own imperfections or makers marks, gives concrete buildings a gravitas that other materials cannot match.

Concrete enables the building form to be both heroic and intimate in scale, and thereby appropriate address the siting and the internal program and functions.

Chau Chak Wing Museum Architectural Concept Design Statement

Response to Design Excellence Criteria

The following summarizes how the concept design for the Chau Chak Wing Museum has addressed the University's Design Excellence Criteria:

1. DISTINCTIVE, VISUALLY INTERESTING & APPEALING

The Chau Chak Wing Museum responds to its unique site by:

- > Reinforcing the landscape character of this part of the Campus by nestling within the canopies of the significant trees around the site
- > Being a dramatic composition of forms with a pure concrete form hovering over a rich landscape of terraces and courtyards
- > Creating a rich spatial experience within the building which can support a diversity of exhibition themes and styles
- > Using materials and detailing that will age gracefully, reducing the reliance on maintenance

2. EQUITABLE, INCLUSIVE & DIVERSE

- > The Chau Chak Wing Museum will add a new dimension to the life of the Campus by expanding the network of fine grained landscape and open spaces, and activating these with external displays and complementary uses, such as the Museum Café, which overlooks the landscape to the east
- > Despite a steeply sloping site, the building is accessible with a pedestrian link along the eastern side of University Place

3. CONTEXTUAL, LOCAL & OF ITS PLACE

- > Protecting and reinforcing key vistas to and from the Campus and the important heritage buildings along the ridgeline (The Quadrangle and Great Hall)

Chau Chak Wing Museum Architectural Concept Design Statement

- > Offering both a heroic and human scale experience, responding to the grand scale of the Campus and University Place, and the fine grain and rich texture of the collections that will be displayed within
- > Presenting a formal, yet welcoming and accessible entrance towards University Place and the Great Hall
- > Providing comfortable and welcoming spaces for visitors outside the building

4. FUNCTIONAL, RESPONSIVE & FIT FOR PURPOSE

- > The building has been designed from the inside out to provide highly flexible and adaptable display and support spaces which are suited to the display and engagement with the University's unique collections
- > Distinct from the semi-permanent display spaces, the temporary exhibition space provides the University with a large, flexible space which can accommodate major travelling shows, performances or events
- > The building provides spaces for staff, students and visitors that are efficiently planned and organized to maximize operational flexibility
- > Appropriate access for vehicles, including the loading and unloading of major travelling exhibitions, is integrated into the design to ensure security and environmental control requirements are provided, and without unsightly impacts on the landscape character of this part of the Campus

5. ENJOYABLE, SAFE & COMFORTABLE

- > The building creates a rich spatial experience, animated by natural light, with primary visitor circulation organized around a central atrium.
- > Internal spaces are linked to external spaces by the careful placement of windows and openings without compromising exhibition flexibility or internal amenity.
- > Excellent visual connectivity between display spaces across multiple floors enhances visitor experience by ensuring visitors do not become lost or disoriented.

Chau Chak Wing Museum Architectural Concept Design Statement

- > The circulation system allows individual gallery spaces to be closed off for refurbishment / change over without compromising visitor circulation.
- > Despite a steeply sloping site, the building is accessible with a pedestrian link along the eastern side of University Place

6. VALUE-CREATING & COST-EFFECTIVE

- > The concept maximizes value for money by delivering highly efficient spaces within a constrained site
- > Spaces have been designed to allow them to be used in multiple configurations, including separate after-hours access for staff and clear lines of security control for after-hours use of spaces such as the auditorium/multi-purpose space and the café
- > Within the constraints of the budget, the building makes a positive contribution to the Campus by providing a range of outdoor rooms and spaces which can be used for active and passive uses including outdoor displays and for school groups' use

7. SUSTAINABLE, EFFICIENT & DURABLE

- > Utilising the site's slope to embed large parts of the building below ground, thereby minimizing energy needed to maintain close environmental control for display and collection storage spaces
- > Providing windows to spaces occupied by people for long periods (principal staff zones)
- > Removing alien tree species (African Olive) as part of the project
- > Providing spaces which can easily be reconfigured or repurposed as required
- > Providing a robust structure which can accommodate a wide range of load types for exhibitions without undue cost penalties
- > Distribution of services is made highly efficient by locating plant and equipment close to the spaces served, minimizing energy lost through transmission



Appendix H – Gehl Review

The University of Sydney
Att. Scott Biggs

/ Copenhagen, March 22, 2017
Final Issue.

Gehl Architects ApS
Vesterbrogade 24, 5th floor
1620 Copenhagen V
Denmark

gehlpeople.com
mail@gehlpeople.com

+45 32 950 951
CVR nr. 25 30 95 29

Gehl Review; Chau Chak Wing Museum

Gehl has reviewed the Chau Chak Wing Museum based on the following documents:

- CCW Museum notes. (170215)
- Comparative Area Schedule. (170210)
- JPW-SK -0100 Option 11 Drawings
- DRP Terms of Reference. DE criteria
- CCW Museum background notes
- CCW Museum - BEC DRAFT 170214
- CCW Museum - Design Studies 160803
- CCW Museum - Design Excellence 30 Meeting Draft_02

The Gehl review is made on the basis of the above material as well as the directions provided by the Gehl Public Realm Strategy for The University of Sydney.

Kind regards,



Henriette Vamberg
Partner & Managing Director
Gehl

General Comments.

The site offers a wonderful opportunity for developing a cultural offer above average that can support this important place as the face of the University.

This project will be a fantastic and transformational investment in this part of campus. It will not only consolidate and expand an improved public cultural offer on-campus but also contribute to an improved public realm vision for the wider precinct. The project will be a major first step towards a future campus landscape that addresses improvement opportunities as well as broader strategic ambitions of the University in this historic precinct.

With the project site located in such a sensitive and heritage-significant context, the Design Excellence Criteria provide a robust framework to steer quality design outcomes.

Specific Comments.

Contextual Response:

The advice from Heritage Council are noted and how this has defined the primary building site, envelope and landscape design response. Gehl notes the efforts of the project in responding to these requirements, in particular, green landscape sensitivities and ensuring that a 'light touch' guides the project's development.

Future contextual opportunities for improvement have been identified and tabled that offer an improved public realm vision for the wider precinct. Some of these ideas have been noted as already recognized as part of change management in the wider precinct and commend this. Gehl re-iterate that these future investments will not only have positive benefits on the project upon completion but also to the public face of the University generally.

Building Concept; Upper Levels

The design response defines a floating rectangular box, that is elevated above a grounded podium. Gehl appreciates the contrast between open and closed volumes and the general design language of keeping the design response simplistic and elegant. Gehl note the Quad Lawn / University Place as the most visible part of the building with its frontage opening up to this important space with the design response elsewhere about minimizing impact and presence.

As the design develops, the materiality will be important in achieving the right level of detailing of the facade that can ensure an interesting texture and warmth juxtaposed against glazed openings. Whilst Gehl understand that balancing the

need for maximum wall space for exhibitions versus opening up the façade for natural light and greater views in & out is not an easy task, we recognize this as something to keep being mindful of during the design development.

Building Concept: Podium

The building concept is appealing in its response to elevate the main building volume above the terrain and to emphasize a clear connection of the landscape at the upper and lower levels.

As with the upper levels, the balance between wall space and transparency at podium level is something to keep being mindful of as design develops, particularly at ground-level eye-height. The needs of the museum today may differ from its needs in the future and Gehl would support any construction detailing in the podium exterior that future-proofs the building's adaptability and flexibility.

The raised planter beds adjacent to main entry helps enclose the forecourt space but also has potential to limit views in & out at eye-level, particularly from the approach south to the entrance. This is something to be mindful of as design detail further develops.

Landscape Concept:

The standpoint of the Heritage Council is noted and how it can present a future opportunity to develop the landscape in parallel with the future management directions of the CCW museum.

Gehl note the limited external collection currently in possession by the museum. This does present itself as another future opportunity, as the museum evolves and 'settles' in to its new premises. The adjacent landscape space has much potential to become an extension of the museum through an expanded external collection space. This can be a strategy to create a strong integration with the landscape spaces around the museum and explore improved access to this outdoor landscape through additional paths and invitations to sit, enjoy and study adjacent to the museum and so on.

Gehl note some financial viability issues yet to be resolved for the museum café. A visual presence in the landscape somewhere adjacent to University Ave and museum to capture nearby footfall (26,000 people on Eastern Ave per semester day, 6000 per day on University Ave) through a cart, kiosk, pop-up could help this operation as well as contribute to strategic ambitions for more (and better) food and beverage offers on-campus.