

SSD 16_7894: CHAU CHAK WING MUSEUM UNIVERSITY OF SYDNEY, CAMPERDOWN CAMPUS

UNIVERSITY OF SYDNEY RESPONSE TO SUBMISSIONS – SUPPLEMENTARY INFORMATION

22 JANUARY 2018



The University of Sydney has reviewed all submissions received as part of the *SSD 16_7894 – Chau Chak Wing Museum*, located on the eastern edge of the University's Camperdown campus and bounded by University Avenue to the east and south, University Place to the west, and Parramatta Road to the north.

The University of Sydney's *Response to Submissions, Supplementary Information* has been structured into the following categories in order to differentiate between sources of submissions, relevant disciplines, relevant issues, and changes to design.

	Page
1. Response to Office of the Government Architect (OGA)	3
2. Response to The Department of Planning & Environment	7

APPENDICES

- Appendix A – Updated DA Drawings
- Appendix B – External Sample Board
- Appendix C – JPW Sketches
- Appendix D – SEPP 64 Assessment
- Appendix E – Proposed External Finishes

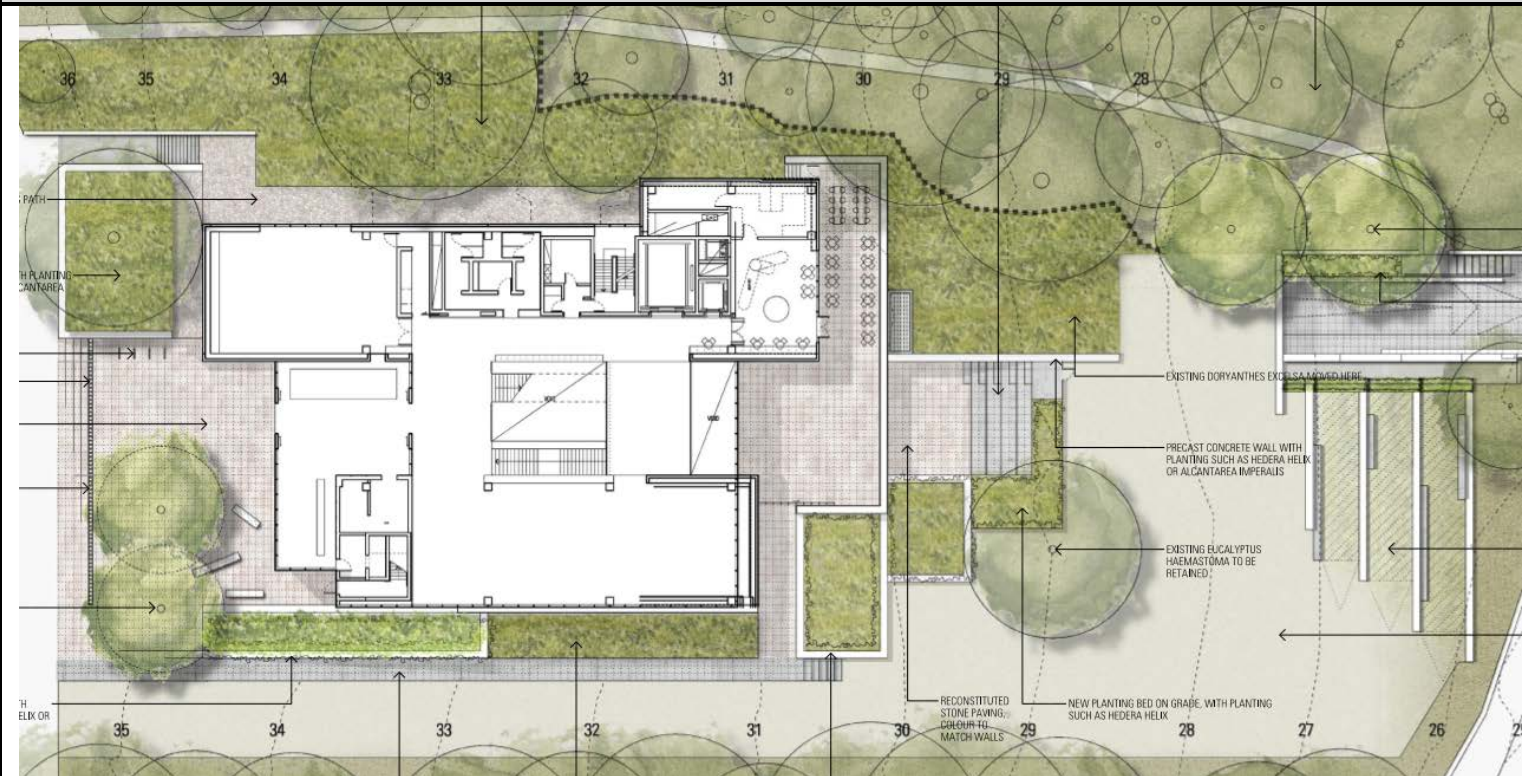
1. UNIVERSITY OF SYDNEY RESPONSE TO GOVERNMENT ARCHITECT'S OFFICE RECEIVED 17 JANUARY 2018

SSD 16_7894 – CHAU CHAK WING MUSEUM	
OGA KEY ISSUE	UNIVERSITY PROJECT RESPONSE
<p>1. No changes have been made to the southern interface of the building, therefore it cannot be said that the applicant has considered or improved the public domain as recommended. It may be that small terraces, landscaping or outdoor 'rooms' that do not have physical connections into the building can be provided, which utilise the southern elevation as one 'wall' to those spaces and which would provide some interest to pedestrians walking from the gates to the University Lawn</p>	<p>USyd: The University has considered the additional comments provided by the GA office (received by the University on 17 Jan 2018), and provides our response to the issues addressed below. Furthermore, the University's architect JPW is also contacting the GA office to provide further clarity and answers to any questions in this matter.</p> <p>The University disagrees with this position and draws the DPE and GA attention to the revised plan JPW-DA-L0500 revision 2 (Appendix A). The Public Domain landscape area, juxtaposed to the southern Museum building façade, has been expanded to incorporate a variety of hard and soft landscape terraces at various levels. This expansion forms part of the proposal's expansion of the principal Museum entrance forecourt, provision of a gathering space to the north-west of the entrance forecourt, provision of informal outdoor education areas, and provision of the physical secondary pedestrian connection running alongside University Avenue towards the University Place lawns further west. See the public domain comparisons on page 4 showing the changes since the last submission. These elements all contribute to the variety, visual interest and activation of the public domain fronting the Museum's southern elevation.</p> <p>DPE is reminded that no physical penetrations are intended through the southern Museum façade due to the careful climate control requirements of the Museum displays within the building (including artefact vulnerability to light) as well as security reasons in protecting valuable artefacts contained within the building. Carefully positioned slot windows do however offer the passer-by a glimpse of the Museum collections within, and provide a degree of activation.</p> <p>Finally, DPE is reminded that the expansion of the southern pedestrian link and landscaping is confined in width due to the University's intention to protect the tree roots of the High Significance heritage trees (as identified by the University's Grounds Conservation Management Plan) lining the University Avenue approach, and the desire of both the University and the Heritage Council to preserve the lawn curtilage and view axis up to the Quadrangle Building.</p>

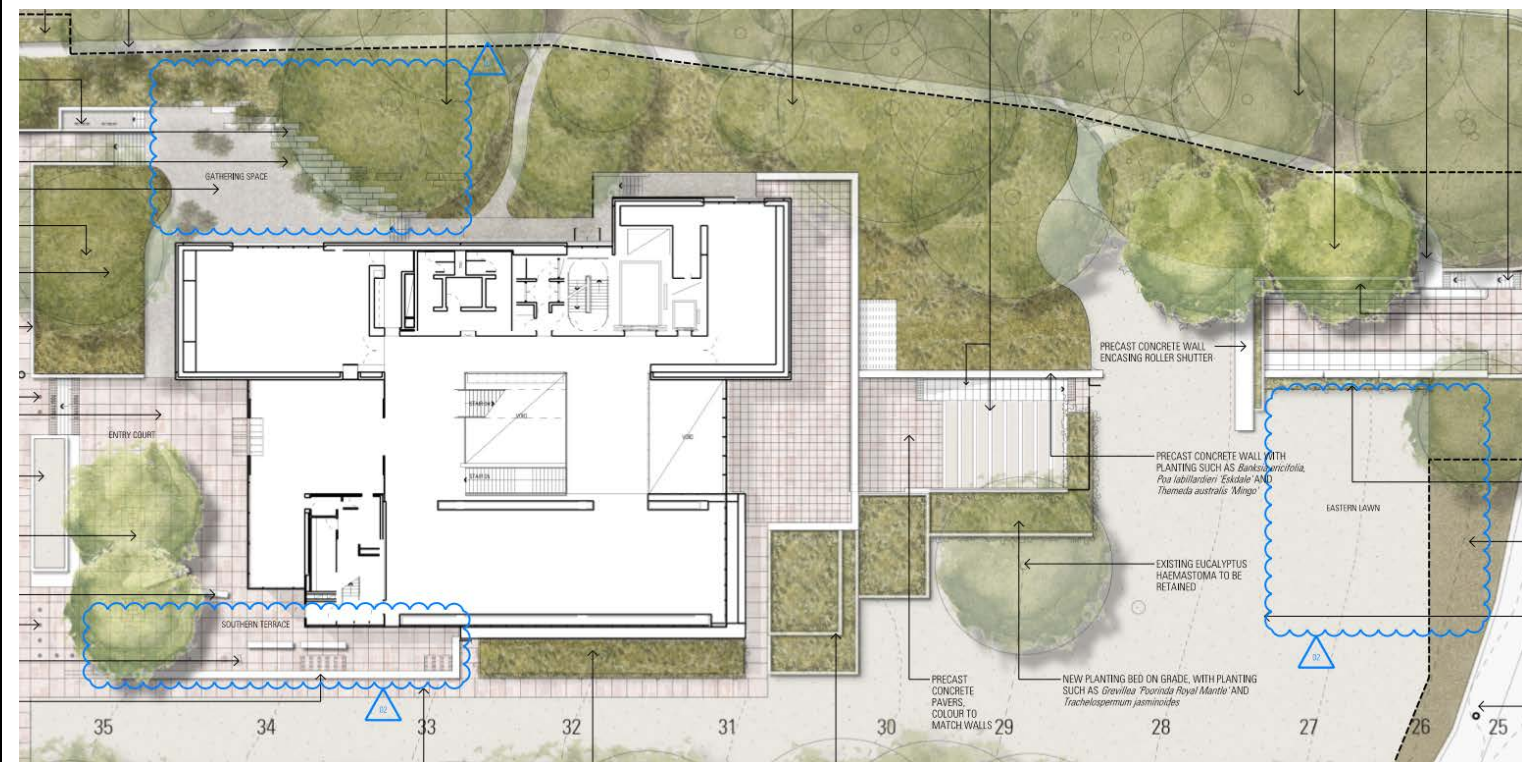
SSD 16_7894 – CHAU CHAK WING MUSEUM

OGA KEY ISSUE

UNIVERSITY PROJECT RESPONSE

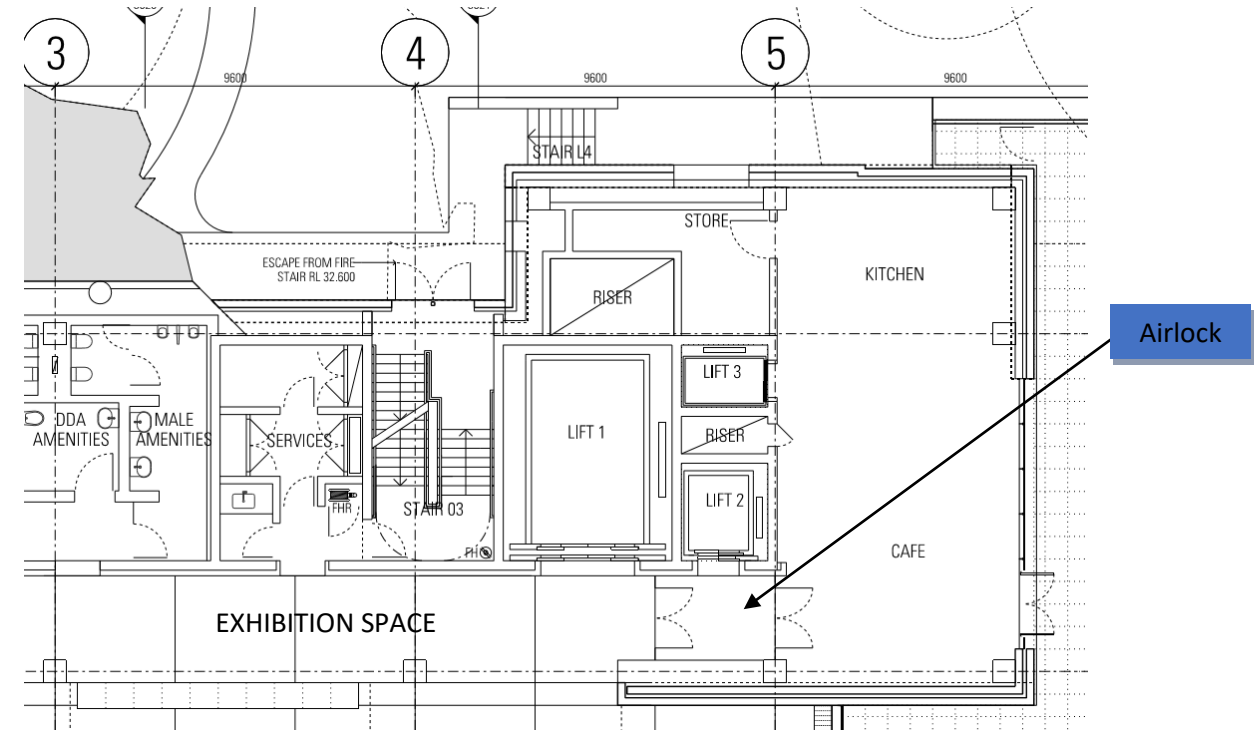


JPW DA- L-0500 Rev 1



JPW DA- L-0500 Rev 2

SSD 16_7894 – CHAU CHAK WING MUSEUM

OGA KEY ISSUE	UNIVERSITY PROJECT RESPONSE
<p>2. The summary states that an additional 'gathering space' has been provided to the northwest, however, developed drawings to demonstrate this have not been provided.</p>	<p>USyd: The University highlights the revised Ground Plan L-0500 version 2 which was submitted with our Response to Submissions document. The Plan (refer to page 4) highlights the new 'Gathering Space' at the northwest campus domain outside the building and the comparison with the original SSD Plan Revision 1 illustrates the extent of the new area. This space is designed and located specifically adjoining the intersection of the University lawn and Museum entrance in consideration of the University's <i>Wingara Mura-Bunga Barrabugu Strategy</i> and will provide an area for ceremonial activities and informal gatherings. The new gathering space is approximately 100m2.</p>
<p>3. The intent to provide open public space associated with the entry to the west and the northern façade and landscape is supported.</p>	<p>USyd: Noted</p>
<p>4. The justification that the multipurpose space cannot have any doors towards this gathering space seems limiting, as the café at the lower level does this, and therefore issues of climate control are suitably dealt with in that case.</p>	<p>USyd: We understand the GA's views on this. However the Multi-Purpose Room is not designed to be opened up to the external campus domain due to specific climate control containment against light, air, humidity and protection of artefacts through security. The University also specifically intends this Room to be buffered from external noise emanating from Parramatta Road. By contrast, the Café has no such climate and environmental control requirements and therefore can benefit from a secured external and accessible Terrace area from within the Museum development. Access from the Museum to the Café is provided via an air lock, again to ensure protection of Museum artefacts within the building. See drawing below showing the required airlock to the exhibition space from the café to maintain strict climatic conditions. A similar airlock arrangement to the Multi- Purpose Room is not feasible as the Multi- Purpose Room will contain and display Museum artefacts.</p> 

SSD 16_7894 – CHAU CHAK WING MUSEUM	
OGA KEY ISSUE	UNIVERSITY PROJECT RESPONSE
<p>5. Similarly no changes or development has been proposed in response to the GA's recommendation that the façade materials be further considered.</p>	<p>USyd: The University has provided DPE with a physical sample board of all materials and colours. As described in our original Response to Submissions document, the building materials and colours have been carefully selected to compliment the setting and establish relationships between neighbouring buildings.</p> <p>The proposed Envisia low-carbon 'white' concrete of the upper level is actually light grey. This is a neutral colour, which responds appropriately to the position of the upper storey within the tree canopies that surround the building. The concrete is non-reflective, which will help the upper level remain recessive within the landscape, whilst allowing the upper level surfaces to be a suitable background for the projection of artwork or displays in the future.</p> <p>The neutral light grey colour also references the lightness of the Fisher Library to the south, reinforcing the legibility of these buildings as a gateway to University Place. We attach at Appendix E a marked-up rendering showing materiality for ease of reference.</p> <p>Please refer to the sample board submitted to DPE. The photo is at Appendix B for reference.</p>

UNIVERSITY OF SYDNEY RESPONSE TO DEPARTMENT OF PLANNING & ENVIRONMENT RECEIVED 12 JANUARY 2018

SSD 16_7894 – CHAU CHAK WING MUSEUM	
DPE ISSUE	UNIVERSITY OF SYDNEY PROJECT RESPONSE
<p>1. Landscape Plans</p> <p>a. It is noted that the submitted landscape plan references ‘<i>New trees such as Waterhousia Floribunda</i>’ however there is no provision of <i>Cupanipopsis anacadioides</i> or <i>Tristaniopsis Laurina</i> on the site as indicated in the plant schedule.</p> <p>b. Neither the submitted landscape plan or associated schedule clearly identifies the number and species of trees to be planted on site.</p> <p>c. It is unclear how many trees are proposed to be planted as replacements for the eighteen to be removed however, from the information provided it appears to be approximately four. Please consider additional replacement planting to address the loss of vegetation from the site.</p>	<p>Item a: Please refer to the updated plant schedule and landscape drawings showing the correct plant schedule as per the current design at Appendix A. From ongoing design development, the <i>Waterhousia Floribunda</i> has been replaced with the <i>Cupanipopsis anacadioides</i>.</p> <p>Item b: Please find the updated plant schedule and landscape drawings showing the correct plant schedule as per the current design at Appendix A. The number of trees and shrubs is now included in the updated plant schedule</p> <p>Item c: Please refer to the plant numbers at on drawing JPW L-501 Rev 2 showing all plant numbers. While the main trees that are being replaced are 4, there is an ample amount of new planting and vegetation being provided to the development of which the plant species selection have been deliberately chosen to grow well in shaded areas such as this area. Large scale tree planting has not been considered due to the constraints of site and the shade that the existing heritage listed trees provide.</p>
<p>Loading Dock Information</p> <p>Within the Response to Submissions (RtS) document, point 1 of the project response located on page no.9 references amended plans following further development of the loading dock design. It is noted that Appendix A included revised photomontages, and a conceptual site plan and section, however revised architectural plans have not been received. Please provide the revised architectural plans as referenced in the RtS document and please clearly identify the changes.</p>	<p>Please refer to the revised plans at A showing the updated DA Drawings.</p> <p>The only changes that have been made to the loading dock design is soft landscaping. Please refer to the Public Domain drawing JPW-DA-L-0500 Rev 2 (Appendix A) which now shows additional planters around the loading dock to help soften the entry.</p> <p>Essentially there has been no change to the entry to the loading dock. Following our most recent and final meeting with the Heritage Council NSW in December 2017 (who concluded by endorsing our Museum design and proposal including the loading dock design solution) and going through various options as outlined in the original RtS submission, the University concluded to keep the loading dock in its current position after reviewing all the alternatives. The revised and upgraded photomontages were presented to the HCNSW December 2017 meeting to demonstrate and justify that the loading dock does not look as out-of-place as they originally thought.</p>
<p>Signage</p> <p>The submitted documentation does not include consideration of the proposed signage against the provisions of SEPP No 64 – Advertising and Signage. Please provide an assessment of the proposed signage against the relevant sections, including Schedule 1.</p>	<p>Please refer to Appendix D for the letter from MG Planning showing their assessment and compliance with SEPP No 64 – Advertising and Signage.</p> <p>Please also note that the proposed building identification signage qualifies as Exempt Development under the provisions of Clause 38 and Schedule 1 of the <i>SEPP (Educational Establishments & Child Care Facilities) 2017</i> planning instrument. Notwithstanding, SEPP 64 is addressed as requested by DPE.</p>
<p>Bicycle Parking</p> <p>Please confirm how many bicycle spaces are to be provided on site.</p>	<p>There will be the following bicycle parking spaces available:</p> <p>- 8 public spaces (4 hoops) in entry courtyard</p>

SSD 16_7894 – CHAU CHAK WING MUSEUM	
DPE ISSUE	UNIVERSITY OF SYDNEY PROJECT RESPONSE
	<p>- 4 staff spaces (2 hoops) in the loading dock</p> <p>Please refer to Appendix C for the JPW plans detailing the positions of the spaces.</p>
<p>Pedestrian Access Please clarify if pedestrian access will be available into the museum from the eastern side of the site via the lower level courtyard, or if this area is to be secured.</p>	<p>For security and visitor management reasons, all public access will be through a single point of access (entry foyer) the lower level courtyard is secured and accessible from within the museum. All access to the Café is via the Museum itself. Refer to Appendix C JPW Sketches showing access points.</p>