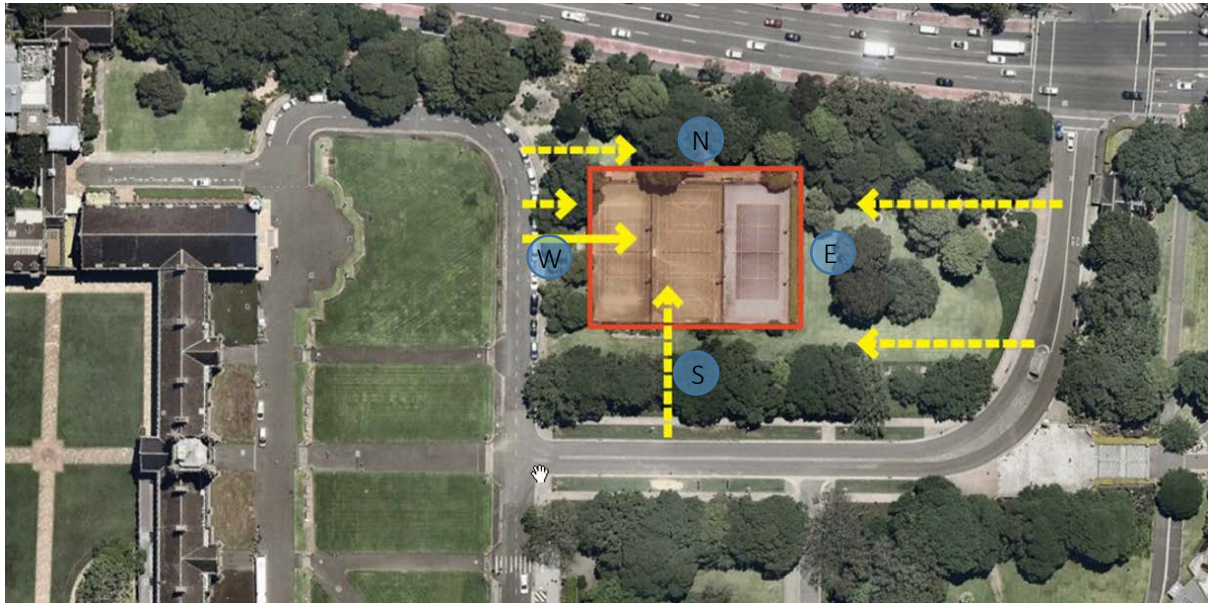


A number of options for the loading dock entrance have been investigated to best service the building.



A range of options for the position of the loading dock portal were considered as set out below:

North side

Access from Parramatta Road is not possible due to:

- existing bus lanes and high traffic volumes and even if feasible, would have major detrimental impacts on the existing significant trees along this Campus boundary
- prohibited by RMS as Parramatta Rd being a main arterial Road.

Western side (off University Place)

Loading access from University Place was not preferred because:

- The location of a loading off University Place would increase vehicle movements in this part of the Campus, whereas the University has a long term objective to reduce vehicle movements across the Campus and promote greater pedestrian priority zones
- The location of a loading dock off University Place would require much of the ground floor to be allocated to non-public functions, reducing the operational efficiency and amenity of the main entrance of the building
- The location of a loading dock off University Place would require an increase in building height due to the headroom clearance requirements for large vehicles

Southern Side (off University Avenue)

- Any vehicle access pathway into the loading dock from the southern side would require the removal of several significant trees from the important view corridor between the Quadrangle and Victoria Park

- An access pathway would separate the grassed landscape surrounds to the building, limiting active uses for students, staff and visitors and require more hardstand pavement areas

Eastern Side (off University Avenue)

- Two options for access from the eastern side were explored.
- A location closer to the main axis between Victoria Park and the Quadrangle would be visually intrusive from this main pedestrian pathway, and be more likely to have detrimental impacts on existing trees.
- A location closer to Parramatta Road allows the portal to be set within the existing topography without challenging Baxter's Lodge as the principal structure at this entry to the Campus, and minimise impacts on existing trees (Preferred Option)