

02 Urban Design & Built Form

Relationship to Victoria Park

Existing Landscape Character

The existing avenues of trees create strong links between the Campus landscape and Victoria Park, although recent 'infill' planting has reduced the formal character of the avenue planting, and in some areas restricts views.

The existing figs along Parramatta Road were planted in the 1920s.

Key Sightlines

The avenues of trees along the north and south sides of University Avenue are important framing devices for key views in and out of the Campus.

The existing trees along Parramatta Road screen the site from the north, including from the intersection of Parramatta Road and University Avenue.



View from Parramatta Road & University Avenue, 2016

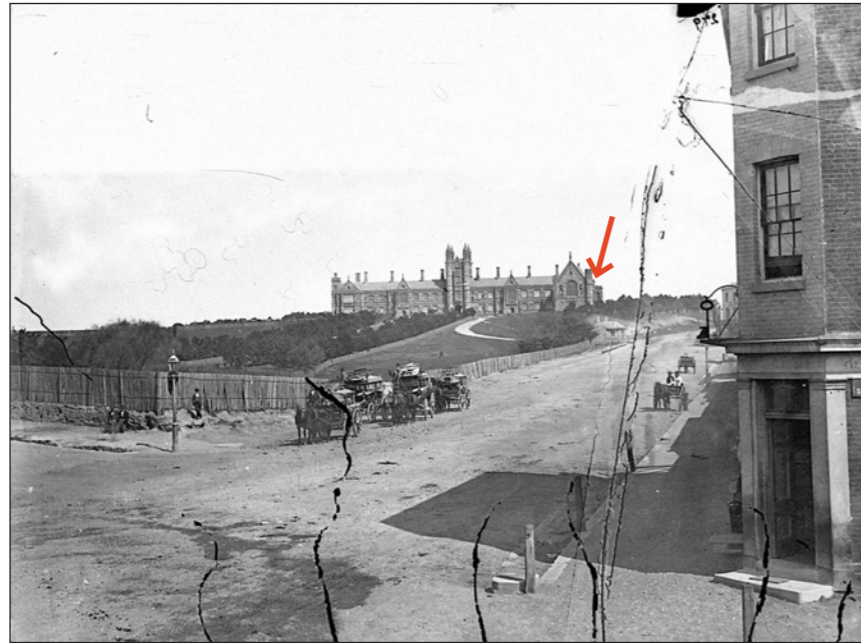
Note site is not visible through existing tree canopies and parapet of Fisher Library only just visible above existing canopies



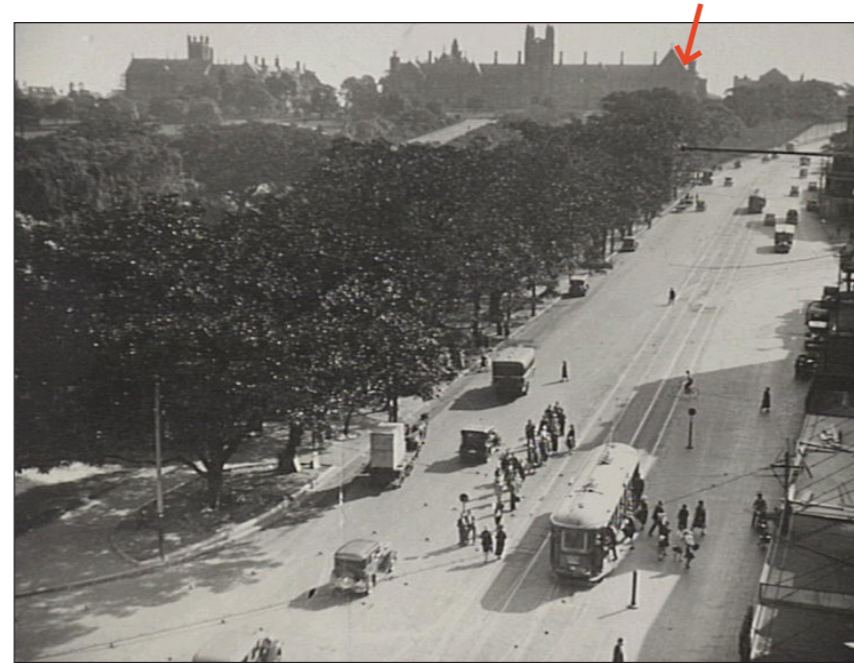
Precinct Plan

NTS

02 Urban Design & Built Form



The Quadrangle & Great Hall, circa 1870 - 1874



Parramatta Road, looking towards The Quadrangle, circa 1930



View from Victoria Park, looking towards The Quadrangle, circa 1930



Primary vista when approaching from Victoria Park, 2016
Note site is not visible through existing tree canopies



Secondary vista from University Avenue, 2016



View from Victoria Park, looking towards The Quadrangle, 2016
Note site is not visible through existing tree canopies

02 Urban Design & Built Form

Setbacks



Relationship to Neighbours

The building has been carefully positioned within the existing landscape to relate to, and reinforce, the unique character of this part of the Campus.

Western Setbacks

The western side of the building responds to the form and alignment of Fisher Library, with the upper section set back slightly from the western face of Fisher to create an appropriately scaled forecourt, and to enable the retention of the significant Holm Oak in the northwest corner of the site.

Northern Setbacks

The building has been positioned to enable the retention of a number of significant trees along the northern side of the existing tennis courts.

Eastern Setbacks

The building responds to the eastern alignment of Fisher Library, with the upper section generally aligned with Fisher.

Southern Setbacks

The building respects the existing view corridor between the tennis court fence and the row of large trees along the northern side of University Avenue.



Site Plan
NTS

02 Urban Design & Built Form

Building Height

Relationship to Neighbours

The parapet of the Museum relates to the parapet of Fisher Library.

Response to existing levels

The site slopes approx. 11.5m from University Place to University Avenue.

The entry forecourt is set at RL. 35.50 to enable an accessible approach from Eastern Avenue and University Place.

Much of the building is located below ground to maximise open landscape space around the building.

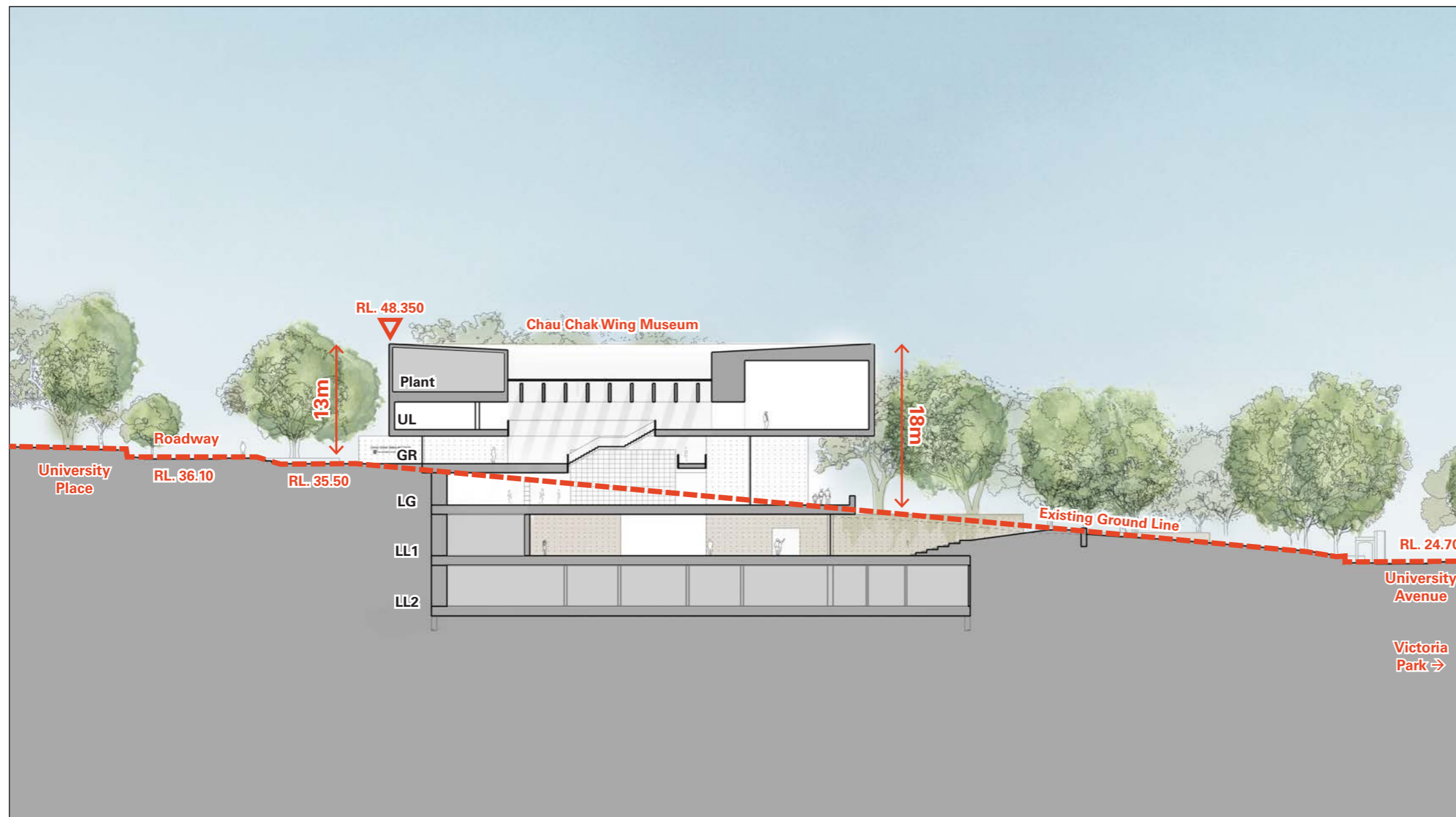
The Lower Ground Level and Lower Level 1 open out onto the landscape on the eastern side.

Landscaping around the building generally aligns with existing levels as they step down from University Place to Victoria Park.

On site detention capacity is integrated into the landscape to the eastern side of the building.

Alternatives Considered

Options to move the building eastwards were explored, but were considered to create a less satisfactory relationship to Fisher Library and University Place, and to significantly increase the visual bulk of the building when viewed from the east.



Cross Section, Looking North
NTS

02 Urban Design & Built Form

Access, Address & Servicing

Visitor Access

Main Entrance

The main entrance has been located off University Place, to reinforce the importance of this major formal outdoor open space within the Campus.

The entry doors relate to the Great Hall axis across University Place.

Visitor Vehicle Setdown

Visitors arriving by bus or public car can be set down along the pavement to University Place/

Accessibility

The approach from the Fisher Library is the only accessible path way from the centre of the Campus due to the existing levels exceeding accessible gradients.

The Entry Forecourt provides a gathering space at the entry position, and provides a vista to the Great Hall and The Quadrangle.

Servicing & Deliveries

The loading dock and principal BOH spaces are accessed through a link off University Avenue, before the roadway forms the important vista to the Quadrangle from Victoria Park.

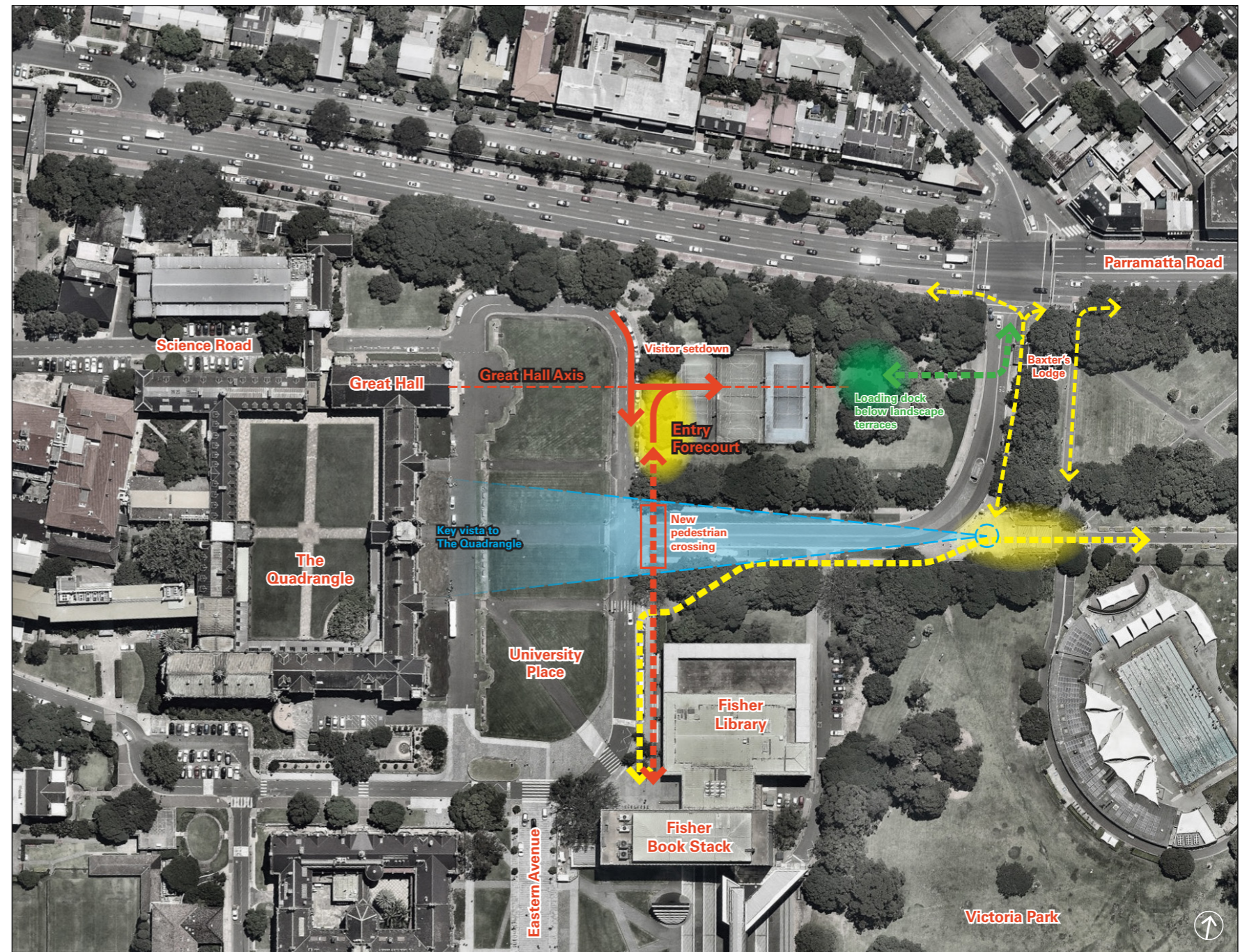
This location helps reduce traffic impacts on the main axial pathway between University Place and Victoria Park, which was identified by Gehl Architects as a major Campus entry point, whereas pedestrian movements to and from Parramatta Road are comparatively small.

The link has been sized to allow small and medium sized vehicles, including garbage trucks, to enter and exit the loading dock in a forward direction.

The link will be closed off with a roller shutter, integrated into terracing as part of the landscape works.

Fire Brigade Access

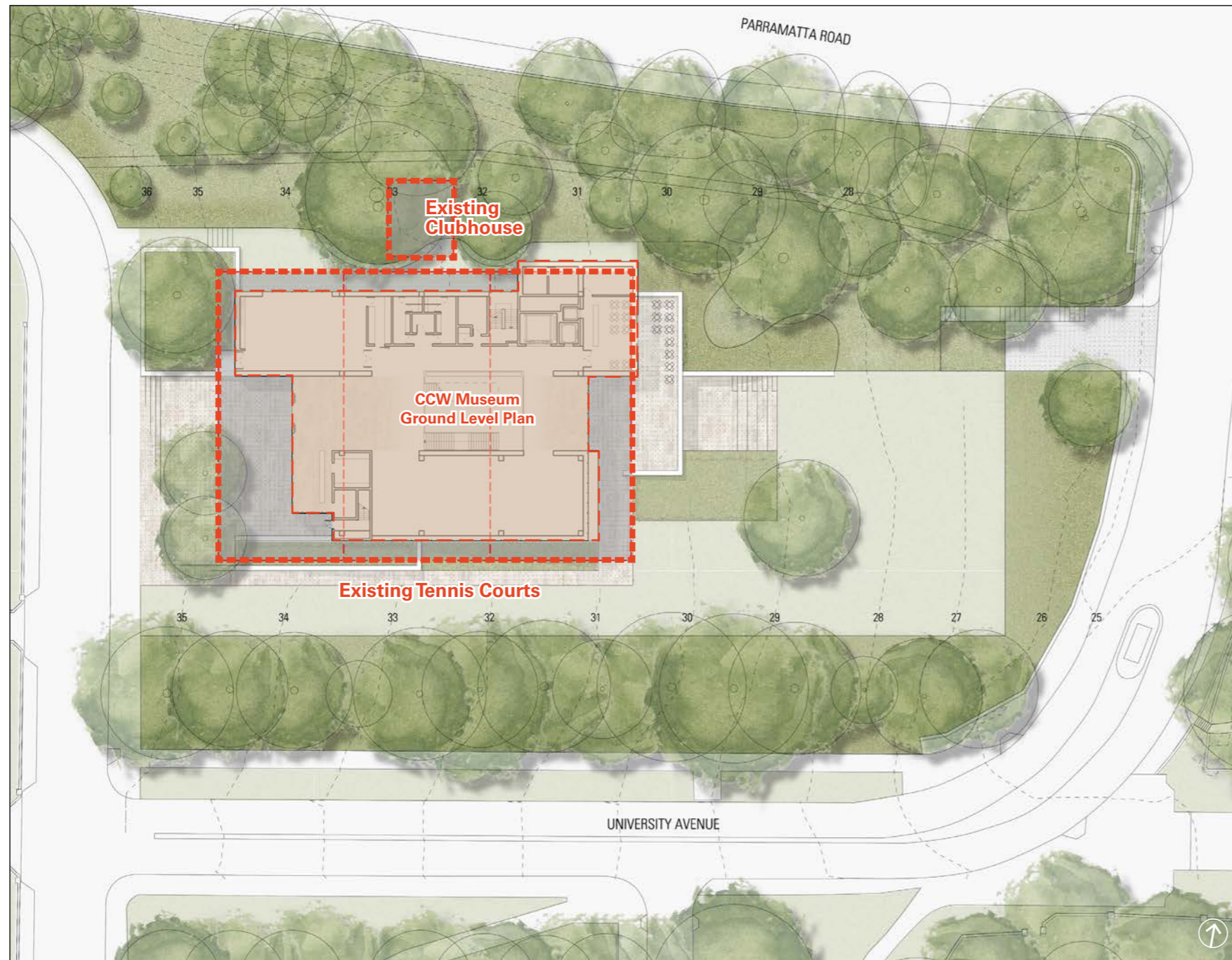
The Fire Booster Pump assembly is integrated into the landscape to the northwest of the main entrance off University Place.



Site Access Considerations Plan
NTS

02 Urban Design & Built Form

Relationship to Existing Site & Proposed Landscape



Site Plan with Tennis Court Overlay
NTS

Existing Tennis Courts

The three existing tennis courts are enclosed by a fence approximately 50m x 35m, and the building footprint of the Chau Chak Wing Museum above ground is generally consistent with the size and position of the footprint of the existing courts.

Existing Trees

The building envelope above and below ground has been established from extensive site investigations of tree roots (including air spading and hand trenching) and tree canopies by a qualified arborist.

Tree protection zones have also been established by a qualified arborist.

Proposed Landscape

Entry Forecourt

Sandstone coloured precast concrete paving and stairs with an acid wash finish create a welcoming arrival space.

Planter walls match the sandstone precast walls and paving elements.

Trees are integrated into the pavement, with custom cast iron tree grates.

In ground lighting is integrated into the pavement.

North

Existing trees generally retained with the building stepped back from the large fig growing against the existing clubhouse.

The existing pathway within the trees is retained, with a new connection to the University Avenue pavement to the east.

South

Precast planters creates a stepped landscape of terraces that follow the natural fall of the site towards the east.

East

An accessible terrace for the cafe is located at Lower Ground Level and overlooks the landscape to the east.

The Garden Courtyard at Lower Level 1 opens out with a series of precast paved steps and seating platforms.

A custom steel fence and gate secure the Garden Courtyard with access only from within the Museum.

Low height, large format sandstone coloured precast elements create bedding areas for ground covers, shrubs and hedges. These elements also provide OSD adjacent to the dock entry, as well as forming the dock entry enclosure.

The dock entry is paved with special precast pavers.