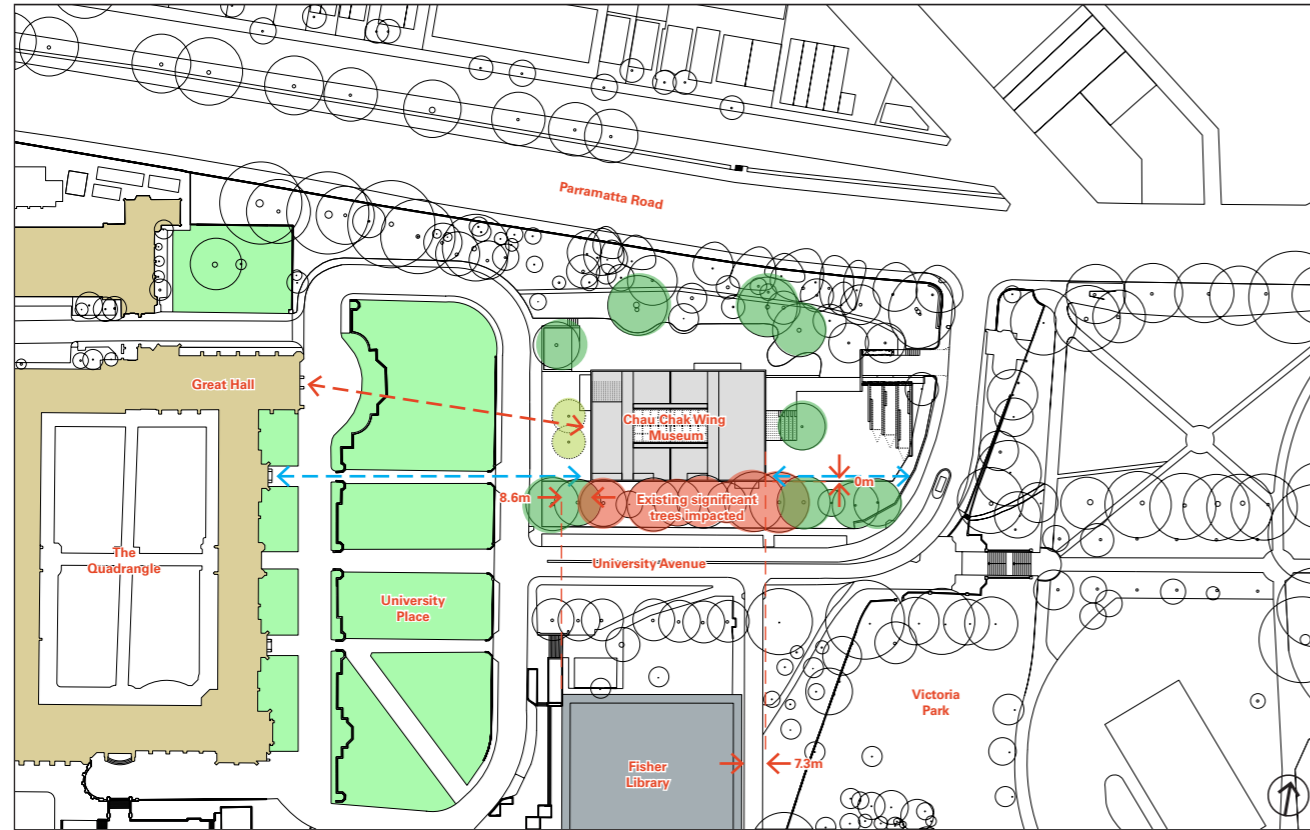


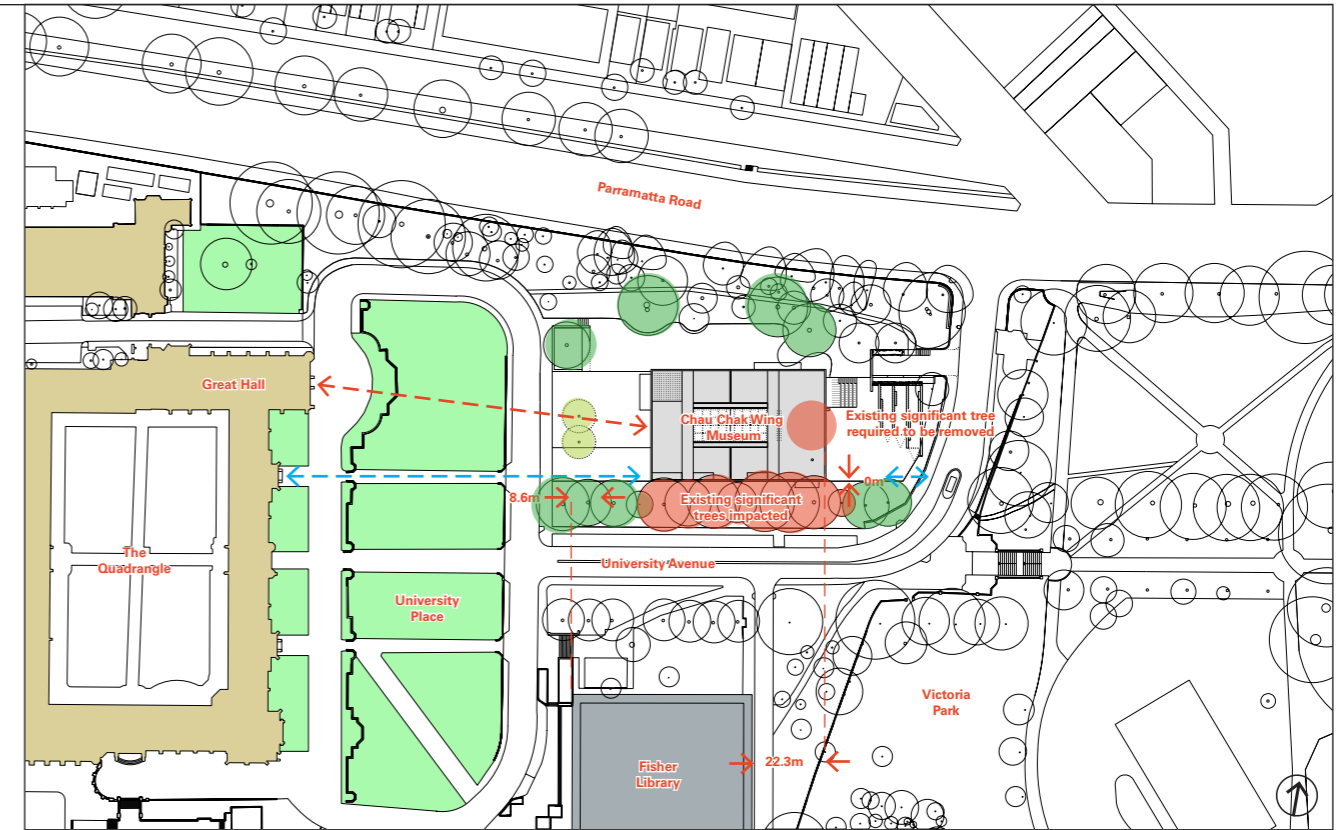
Siting Alternatives



Precinct Plan - Alternative 2 - Building Moved 10m South

NTS

| CONSIDERATION | IMPACT |
|--|-----------------|
| Relationship to Neighbours | |
| The building does not respond appropriately to the Great Hall. | NEGATIVE |
| Key Sightlines | |
| The building partly impedes key sightlines to and from the Great Hall and Quadrangle. | NEGATIVE |
| The primary view from Victoria Park are unaffected. | POSITIVE |
| Landscape | |
| The building is set below the canopy line, and maximises the retention of significant trees, although the long term health of the existing trees on the north side of University Avenue may be impacted. | NEGATIVE |
| The building is not well integrated with existing landscape and levels, with more structure visible above ground level. | NEGATIVE |
| Campus Open Space Network | |
| The building position creates external spaces to the north which are not usable (shaded and noisy). | NEGATIVE |



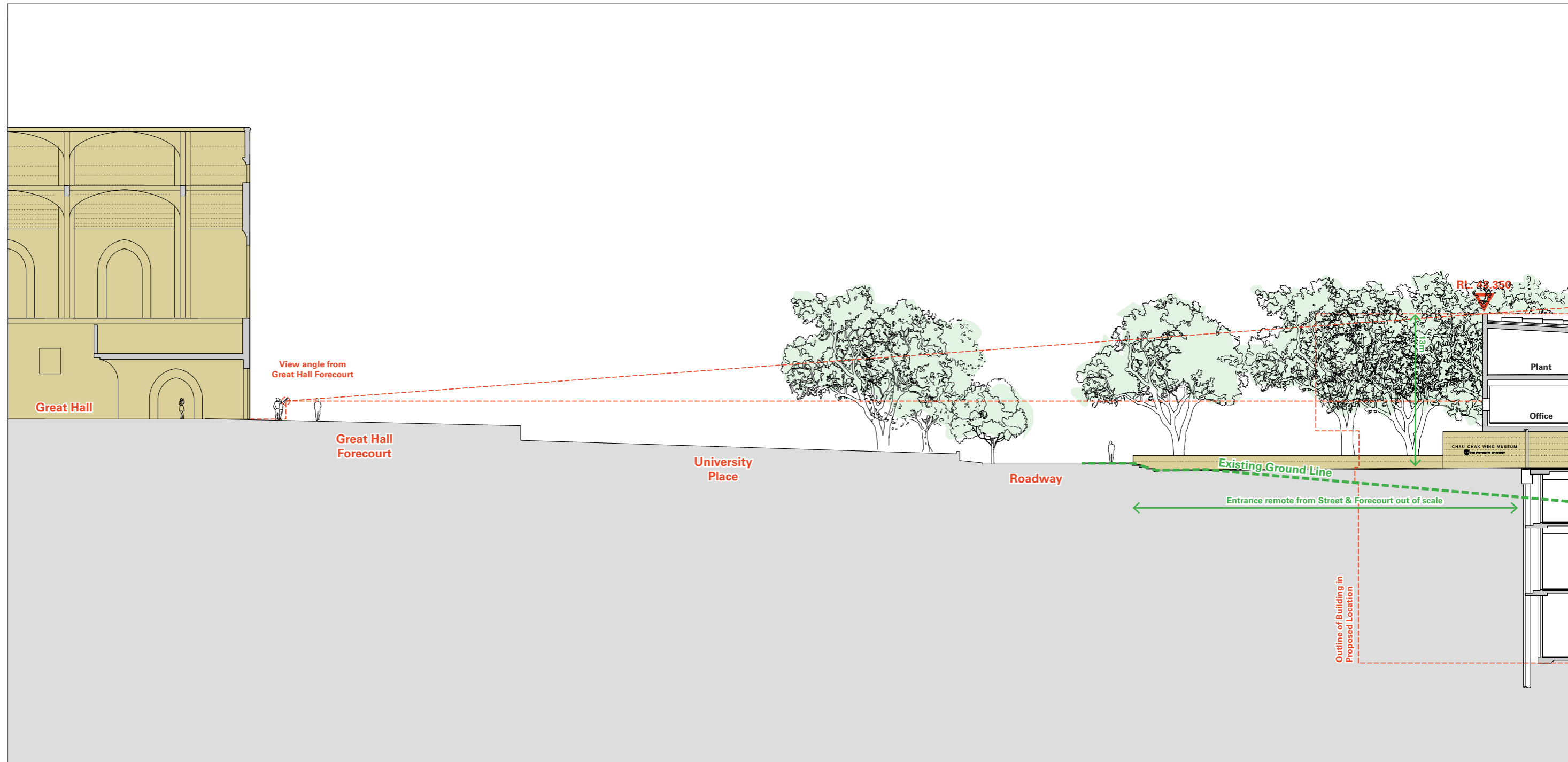
Precinct Plan - Alternative 3 - Building Moved 15m East & 10m South

NTS

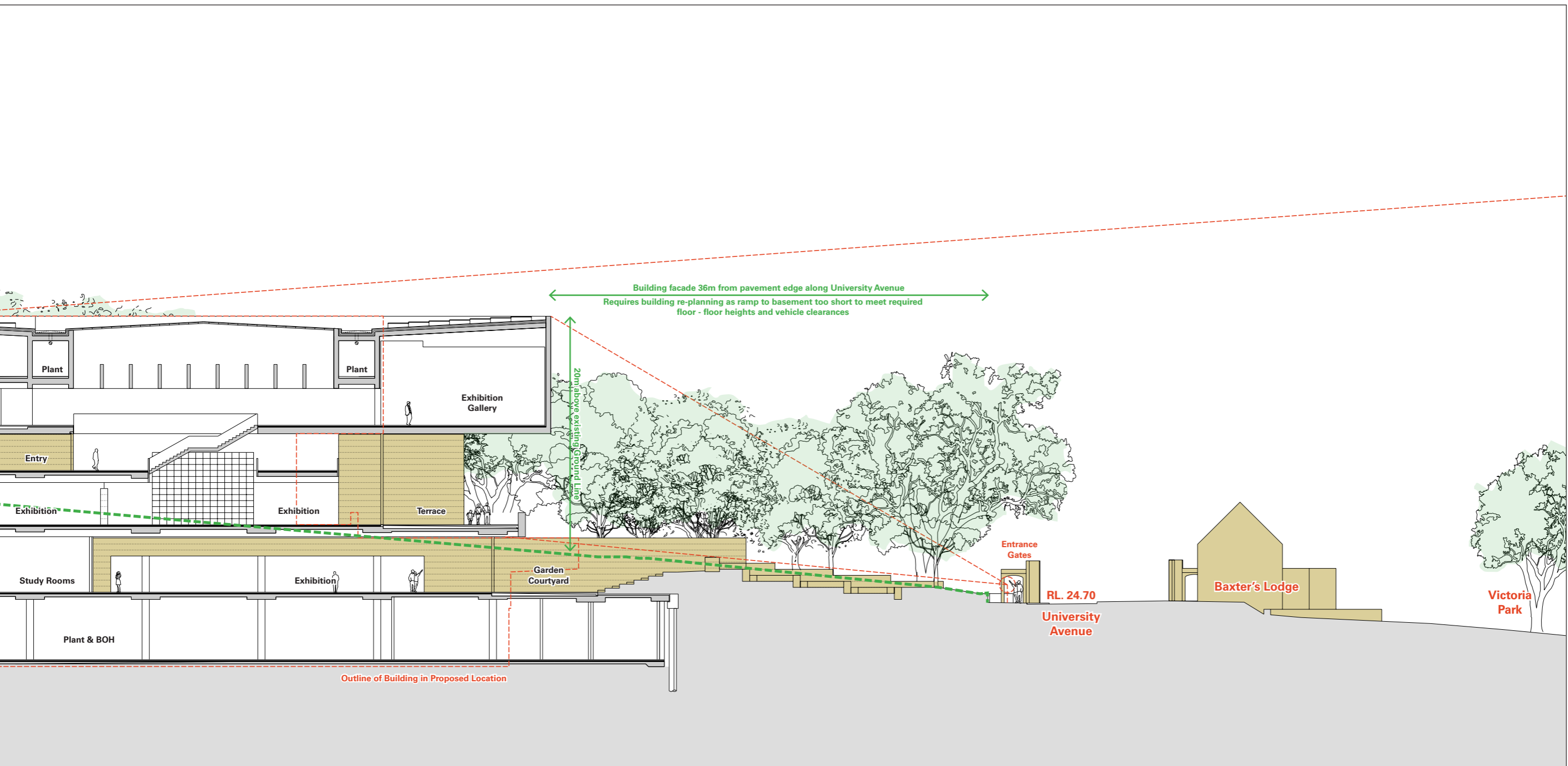
| CONSIDERATION | IMPACT |
|---|-----------------|
| Relationship to Neighbours | |
| The building does not respond appropriately to the Great Hall or Fisher Library. | NEGATIVE |
| Key Sightlines | |
| The building partly impedes key sightlines to and from the Great Hall and Quadrangle. | NEGATIVE |
| The primary view from Victoria Park are unaffected. | POSITIVE |
| Landscape | |
| The building dominates the landscape at the entry off Parramatta Road. | NEGATIVE |
| The building projects above the canopy line when approaching from Victoria Park. | NEGATIVE |
| The long term health of the existing trees on the north side of University Avenue may be impacted. | NEGATIVE |
| The building is not well integrated with existing landscape and levels, with more structure visible above ground level. | NEGATIVE |
| An existing significant tree must be removed. | NEGATIVE |
| Campus Open Space Network | |
| Entry forecourt is too large and entry is set back from University Place. | NEGATIVE |
| The building position creates external spaces to the north which are not usable (shaded and noisy). | NEGATIVE |

02 Urban Design & Built Form

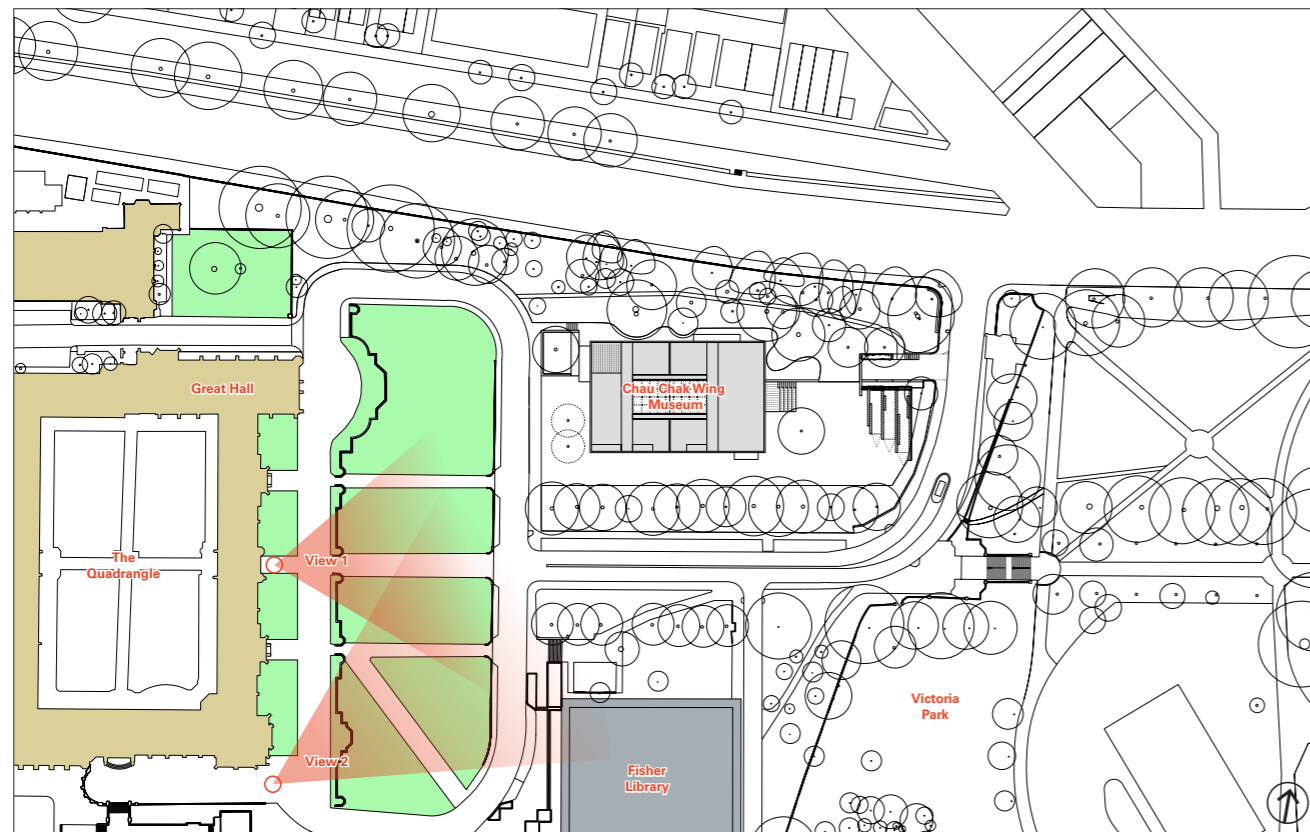
Alternative Site Cross Section with Building Moved 15m East



Alternative 1 Cross Section, Looking North with Building Moved 15m East
NTS



View Comparisons



View Key Plan
NTS

Alternative Building Locations

Two alternatives to the current proposal have been evaluated in response to comments from stakeholders:

Base Case: Proposed

Comparative views for assessment of alternatives are provided.

Alternative 1: Move Building East

Move building 15m to the east.

Alternative 2: Move Building South

Move building 10m to the south.

View Comparison Summary

The proposed building sits below the canopies of the existing trees (which are not visually permeable and do not allow views through to buildings and skyline beyond).

Moving the building east diminishes the 'gateway' relationship with the Fisher Library, and lessens the definition of University Place as a formal open space.

This is particularly apparent when approaching from Eastern Avenue (View 2).



View 1 - Proposed
NTS



View 2 - Proposed
NTS

View Comparisons



View 1 - Alternative 1 - Building Moved 15m East
NTS



View 1 - Alternative 2 - Building Moved 10m South
NTS



View 2 - Alternative 1 - Building Moved 15m East
NTS



View 2 - Alternative 2 - Building Moved 10m South
NTS