

URBIS

ABORIGINAL OBJECTS DUE DILIGENCE ASSESSMENT

2-8 Highgate Road, Lindfield,
NSW

Prepared for
CPDM
3 March 2025

URBIS STAFF RESPONSIBLE FOR THIS REPORT WERE:

Director	Balazs Hansel, MA Archaeology, MA History, M. ICOMOS
Associate Director	Ali Byrne, BA (Hons) Archaeology
Senior Consultant	Johnny Sokalik, BA (Hons) Archaeology
Consultant	Kirsten Downey, BA Archaeology (Hons)
Consultant	Natalie Taylor, BA (Archaeology), B (Media and Communications)
Project Code	P0058132
Report Number	D01 – 21/02/2025 D01 – 28/02/2025 Final – 03/03/2025



Acknowledgement of Country

Urbis acknowledges the Traditional Custodians of the lands we operate on.

We recognise that First Nations sovereignty was never ceded and respect First Nations peoples continuing connection to these lands, waterways and ecosystems for over 60,000 years.

We pay our respects to First Nations Elders, past and present.

The river is the symbol of the Dreaming and the journey of life. The circles and lines represent people meeting and connections across time and space. When we are working in different places, we can still be connected and work towards the same goal.

Title: Sacred River Dreaming
Artist Hayley Pigram
Darug Nation
Sydney, NSW

All information supplied to Urbis in order to conduct this research has been treated in the strictest confidence. It shall only be used in this context and shall not be made available to third parties without client authorisation. Confidential information has been stored securely and data provided by respondents, as well as their identity, has been treated in the strictest confidence and all assurance given to respondents have been and shall be fulfilled.

© Urbis Ltd
50 105 256 228

All Rights Reserved. No material may be reproduced without prior permission.

You must read the important disclaimer appearing within the body of this report.

urbis.com.au

CONTENTS

Acknowledgement of Country	2
Glossary	1
Executive Summary	4
1. Introduction	6
1.1. Subject Area	6
1.2. Proposed Works	7
1.3. Statutory Controls	7
1.3.1. Environment Protection and Biodiversity Conservation Act 1999	7
1.3.2. The National Parks and Wildlife Act 1974	7
1.4. Methodology	8
1.5. Limitations	8
2. Aboriginal Cultural Heritage	18
2.1. Archaeological Context	18
2.1.1. Declared Aboriginal Places	18
2.1.2. Registered Aboriginal Objects	18
2.1.3. Previous Archaeological Investigations	20
2.2. Environmental Context.....	24
2.2.1. Landscape Features	24
2.2.2. Historical Ground Disturbance	28
2.3. Visual Inspection.....	31
2.4. Summary.....	33
3. Due Diligence Assessment	34
4. Conclusions & Recommendations	36
5. References	38
6. Disclaimer	39

Appendix A AHIMS search results

FIGURES

Figure 1 – Regional location	10
Figure 2 – Location of the subject area	11
Figure 3 – Basement 2 plan of the proposed development.....	12
Figure 4 – Basement 1 plan of the proposed development.....	13
Figure 5 – Ground floor plan of the proposed development.....	14
Figure 6 – Section A of proposed development showing two basement levels.	15
Figure 7 - Section B of proposed development showing two basement levels.	16
Figure 8 - Generic Due Diligence Process	17
Figure 9 – Heritage items near subject area	21
Figure 10 – AHIMS sites in Extensive search area	22
Figure 11 – AHIMS sites within proximity to subject area	23
Figure 12 – Historical map from 1899 showing a creek line running to the south-west of the subject area (indicated in red).....	24
Figure 13 – Topography	26
Figure 14 – Soil landscapes and hydrology.....	27

Figure 15 – 1840 map of the Gordon parish showing the approximate location of the subject area within Dan McNally’s land grant indicated by the red arrow.....	29
Figure 16 – 1930 aerial image of the subject area (outlined in red).....	30
Figure 17 – 1943 aerial image of the subject area (outlined in red).....	30
Figure 18 – 1986 aerial image of the subject area (outlined in red).....	30
Figure 19 – 2025 aerial image of the subject area (outlined in red).....	30
Figure 20 – Rear yard of No. 8 Highgate Road – view northeast.	31
Figure 21 – Front yard of No. 2 Highgate Road, view northeast.....	31
Figure 22 – Pool in yard of at No. 4 Highgate Road, view west.....	31
Figure 23 – Pool in front yard of at No. 2 Highgate Road, view south.....	31
Figure 24 – Pond in front yard of at No. 2 Highgate Road, view south.....	32
Figure 25 – Fill present in landscaped areas at No. 8 Highgate Road.....	32
Figure 26 – Paving for carpark at No. 6 Highgate Road, view south-west.....	32
Figure 27 – Underground servicing at No. 4 Highgate Road.	32

TABLES

Table 1 – Industry Specific SEARs for Housing	6
Table 2 – Summary of registered Aboriginal sites in AHIMS search area	19

GLOSSARY

Term	Definition
Aboriginal ceremony and dreaming site	Previously referred to as mythological sites, these are spiritual/story places where no physical evidence of previous use of the place may occur, e.g. natural unmodified landscape features, ceremonial or spiritual areas, men's/women's sites, dreaming (creation) tracks, marriage places etc. These are Aboriginal site features recordable on AHIMS.
Aboriginal cultural heritage	The tangible (objects) and intangible (dreaming stories, legends and places) cultural practices and traditions associated with past and present-day Aboriginal communities.
Aboriginal object	As defined in the NPW Act, any deposit, object or material evidence (not being a handicraft made for sale) relating to the Aboriginal habitation of the area that comprises NSW, being habitation before or concurrent with (or both) the occupation of that area by persons of non-Aboriginal extraction, and includes Aboriginal remains.
Aboriginal place	As defined in the NPW Act, any place declared to be an Aboriginal place (under s.84 of the NPW Act) by the Minister administering the NPW Act, by order published in the NSW Government Gazette, because the Minister is of the opinion that the place is or was of special significance with respect to Aboriginal culture. It may or may not contain Aboriginal objects.
Aboriginal resource and gathering sites	Related to everyday activities such as food gathering, hunting, or collection and manufacture of materials and goods for use or trade. These are Aboriginal site features recordable on AHIMS.
AHIMS	Aboriginal Heritage Information Management System. A register of previously reported Aboriginal objects and Aboriginal places in NSW, managed under Section 90 of the NPW Act.
AHIP	Aboriginal Heritage Impact Permit. A permit issued under Section 90, Division 2 of Part 6 of the NPW Act.
Archaeology	The scientific study of material remains of past human life, including artefacts, relics, ruins, buildings and their environment and context.
Art	Art is found in shelters, overhangs and across rock formations. Techniques include painting, drawing, scratching, carving engraving, pitting, conjoining, abrading and the use of a range of binding agents and the use of natural pigments obtained from clays, charcoal and plants. These are Aboriginal site features recordable on AHIMS.
Artefact	Objects such as stone tools, and associated flaked material, spears, manuports, grindstones, discarded stone flakes, modified glass or shell demonstrating evidence of use of the area by Aboriginal people. These are Aboriginal site features recordable on AHIMS.
Artefact scatter	Multiple artefacts associated with one another in the same context. These are recordable on AHIMS as 'artefacts'.
Burial	A traditional or contemporary (post-contact) burial of an Aboriginal person, which may occur outside designated cemeteries and may not be marked, e.g. in caves, marked by stone cairns, in sand areas, along creek banks etc. These are Aboriginal site features recordable on AHIMS.

Term	Definition
Ceremonial ring	A Raised earth ring associated with ceremony. These are Aboriginal site features recordable on AHIMS.
Cliff	A steep rock face
Code of Practice	<i>Code of Practice for Archaeological Investigation of Aboriginal Objects in New South Wales</i> (DECCW 2010b).
Conflict site	Previously referred to as massacre sites where confrontations occurred between Aboriginal and non-Aboriginal people, or between different Aboriginal groups. These are Aboriginal site features recordable on AHIMS.
DECCW	Department of Environment, Climate Change and Water NSW.
Due Diligence Code	<i>Due Diligence Code of Practice for the Protection of Aboriginal Objects in New South Wales</i> (DECCW 2010a)
Dune	As defined in the Due Diligence Code, a sand ridge or sand hill formed by the wind.
Earth mound	A mounded deposit of round to oval shape containing baked clay lumps, ash, charcoal and, usually, black or dark grey sediment. The deposit may be compacted or loose and ashy. Mounds may contain various economic remains such as mussel shell and bone as well as stone artefacts. Occasionally they contain burials. These are Aboriginal site features recordable on AHIMS.
EP&A Act	<i>Environmental Planning and Assessment Act 1979</i> (NSW)
EP&BC Act	<i>Environment Protection and Biodiversity Conservation Act 1999</i> (Cth)
Fish trap	A modified area on watercourses where fish were trapped for short-term storage and gathering. These are Aboriginal site features recordable on AHIMS.
Grinding grooves	A groove in a rock surface resulting from manufacture of stone tools such as ground edge hatchets and spears, or rounded depressions resulting from grinding of seeds and grains. These are Aboriginal site features recordable on AHIMS.
Harm	As defined in the NPW Act, to destroy, deface, damage or move an Aboriginal object or destroy, deface or damage a declared Aboriginal place. Harm may be direct or indirect (e.g. through increased visitation or erosion). Harm does not include something that is trivial or negligible.
Habitation structure	Structures constructed by Aboriginal people for short- or long-term shelter. Temporary structures are commonly preserved away from the coastline and may include historic camps of contemporary significance. Smaller structures may make use of natural materials such as branches, logs and bark sheets or manufactured materials such as corrugated iron to form shelters. Archaeological remains of a former structure such as chimney/fireplace, raised earth building platform, excavated pits, rubble mounds etc. These are Aboriginal site features recordable on AHIMS.
Headland	A narrow piece of coastal land that projects from a coastline into the sea or ocean
Hearth	Aboriginal site feature recordable on AHIMS. Cultural deposit sometimes marked by hearth stones, usually also contains charcoal and may also contain heat treated stone fragments.
Isolated find	A single artefact found in an isolated context. These are recordable on AHIMS as 'artefacts'.

Term	Definition
Modified Trees	Trees which show the marks of modification as a result of cutting of bark from the trunk for use in the production of shields, canoes, boomerangs, burials shrouds, for medicinal purposes, foot holds etc, or alternately intentional carving of the heartwood of the tree to form a permanent marker to indicate ceremonial use/significance of a nearby area, again these carvings may also act as territorial or burial markers. These are Aboriginal site features recordable on AHIMS.
Non-human bone and organic material	Objects which can be found within cultural deposits as components of an Aboriginal site such as fish or mammal bones, ochres, cached objects which may otherwise have broken down such as resin, twine, dilly bags, nets etc. These are Aboriginal site features recordable on AHIMS.
NPW Act	<i>National Parks and Wildlife Act 1974</i>
NPW Regulation	<i>National Parks and Wildlife Regulation 2019</i>
Ochre quarry	A source of ochre used for ceremonial occasions, burials, trade and artwork. These are Aboriginal site features recordable on AHIMS.
PAD	A 'potential archaeological deposit'. An area where Aboriginal objects may occur below the ground surface. These are Aboriginal site features recordable on AHIMS.
Ridge	A compound landform element comprising a narrow crest that is longer than its width
Ridge top (or ridgeline)	The crest of a ridge that extends along its highest contours
Shell	An accumulation or deposit of shellfish from beach, estuarine, lacustrine or riverine species resulting from Aboriginal gathering and consumption. Usually found in deposits previously referred to as 'shell middens.' These are Aboriginal site features recordable on AHIMS.
SSDA	State Significant Development Application, under Division 4.7 of the EP&A Act
Stone arrangement	Human produced arrangements of stone usually associated with ceremonial activities, or used as markers for territorial limits or to mark/protect burials. These are Aboriginal site features recordable on AHIMS.
Stone quarry	A source of stone which was quarried and used for the production of stone tools by Aboriginal people. These are Aboriginal site features recordable on AHIMS.
Waterhole	A source of fresh water for Aboriginal groups which may have traditional ceremonial or dreaming significance and/or may also be used to the present day as a rich resource gathering area (e.g. waterbirds, eels, clays, reeds etc). These are Aboriginal site features recordable on AHIMS.
Waters	As defined in the Due Diligence Code, the whole or any part of any river, stream, lake, lagoon, swamp, wetlands, natural watercourse and tidal waters (including the sea), where the boundary of tidal waters is defined as the high-water mark.

EXECUTIVE SUMMARY

Urbis has been engaged by CPDM ('the Proponent') to conduct an Aboriginal Objects Due Diligence Assessment ('ADD') of 2-8 Highgate Road, Lindfield, legally defined as Lots 100-103 DP 6608 ('the subject area').

The Proponent is proposing the construction of a 9-storey residential flat building containing 84 apartments. The ADD was undertaken to determine whether any Aboriginal objects or Aboriginal places are likely to be harmed by the proposed development of the subject area.

The ADD was undertaken in accordance with the *Due Diligence Code of Practice for the Protection of Aboriginal Objects in New South Wales* (DECCW, 2010) ('Due Diligence Code') and included the following:

- Searches of the Australian Heritage Database ('AHD'), Aboriginal Heritage Information Management System ('AHIMS') and State Heritage Inventory ('SHI')
- Review of previous archaeological assessments relevant to the subject area
- Landscape analysis
- Analysis of historical land use and its impact on the subject area
- Visual inspection of the subject area

The due diligence assessment concluded that:

- 1) The proposed activity is not a 'low impact activity' and will disturb the ground surface.
- 2) There are no known Aboriginal objects or Aboriginal places within the curtilage of the subject area.
- 3) No previous studies have been identified that directly address the present subject area.
- 4) A historical map from 1899 shows there was an ephemeral creek line running approximately 50 metres to the west of the subject area.
- 5) There is clear and observable ground disturbance within the entire subject area.
- 6) No further investigation is required as a result of the Due Diligence Assessment.

Based on the above conclusions, Urbis recommends the following:

Recommendation 1 – Record Keeping

- This ADD report should be kept as evidence of the Due Diligence Process having been applied to the subject area.

Recommendation 2 – No Further Investigation

- The development may proceed with caution, subject to the following archaeological chance finds and human remains procedures being implemented and followed.

Recommendation 3 – Submission of Report for SSDA 78493518

- This Aboriginal Objects Due Diligence Assessment should accompany the State Significant Development Application (SSD-78775458). The assessment has been prepared in accordance with the Due Diligence Code of Practice and has confirmed that no Aboriginal objects are likely to be present within the site. As such no further archaeological investigation is required.

Recommendation 4 – Unexpected Archaeological Finds Procedure

- Should any archaeological deposits be uncovered during any site works, the following steps must be followed:
 1. All works within the vicinity of the find must immediately stop and the location cordoned off with signage installed to stop any accidental impact to the finds. The find must not be moved 'out of the way' without assessment.
 2. The site supervisor or another nominated site representative must contact either the project archaeologist (if relevant) or Heritage NSW (Enviroline 131 555) to contact a suitably qualified archaeologist.

3. The nominated archaeologist must examine the find, provide a preliminary assessment of significance, record the item and decide on appropriate management measures. Such management may require further consultation with Heritage NSW, preparation of a research design and archaeological investigation/salvage methodology and registration of the find with the Aboriginal Heritage Information Management System (AHIMS).
4. Depending on the significance of the find, reassessment of the archaeological potential of the subject area may be required and further archaeological investigation undertaken.
5. Reporting may need to be prepared regarding the find and approved management strategies.
6. Works in the vicinity of the find can only recommence upon receipt of approval from Heritage NSW.

Recommendation 5 – Human Remains Procedure

- In the unlikely event that human remains are uncovered during the proposed works, the following steps must be followed:
 1. All works within the vicinity of the find must immediately stop and the location cordoned off with signage installed to stop any accidental impact to the finds.
 2. The site supervisor or other nominated manager must notify the NSW Police and Heritage NSW (Enviroline 131 555).
 3. The find must be assessed by the NSW Police, which may include the assistance of a qualified forensic anthropologist.
 4. Management recommendations are to be formulated by the NSW Police, Heritage NSW and site representatives.
 5. Works are not to recommence until the find has been appropriately managed.

1. INTRODUCTION

Urbis has been engaged by CPDM ('the Proponent') to conduct an Aboriginal Objects Due Diligence Assessment ('ADD') of 2-8 Highgate Road, Lindfield, legally defined as Lots 100-103 DP 6608 ('the subject area'). The regional location and boundary of the subject area are shown in Figure 1 and Figure 2, respectively.

The Proponent is proposing the construction of a 9-storey residential flat building containing 84 apartments. The project will follow a State Significant Development Application (SSDA) pathway to obtain consent for the development. The assessment will be submitted in support of SSD-78493518.

The Planning Secretary's Environmental Assessment Requirements (SEARs) were issued for SSD- 78493518 on 20 December 2024. Item #21 of the SEARs specifies the following requirement in relation to Aboriginal cultural heritage.

Table 1 – Industry Specific SEARs for Housing

Item	Description of Requirement	Supporting document
21	<p>Aboriginal Cultural Heritage</p> <ul style="list-style-type: none"> ▪ Where there is known, or reasonably likely, to be Aboriginal cultural heritage on or near the site demonstrate that impacts have been adequately investigated and assessed by: <ul style="list-style-type: none"> - Identifying that an appropriate prior planning process has already considered these impacts, e.g. a rezoning or development application, or - Providing an initial assessment of the potential impacts. ▪ If potential impacts are significant, provide an Aboriginal Cultural Heritage Assessment Report (ACHAR) which: <ul style="list-style-type: none"> - Identifies, describes and assesses any impacts to Aboriginal cultural heritage sites or values associated with the site. - Is prepared in accordance with relevant guidelines. 	<p><u>If required:</u></p> <p>Aboriginal Cultural Heritage Assessment Report</p>

Source: NSW Department of Planning, Housing and Infrastructure.

The ADD has been prepared to meet the requirements for due diligence under the *National Parks and Wildlife Act 1974* (NSW). The ADD follows the *Due Diligence Code of Practice for the Protection of Aboriginal Objects in New South Wales* (DECCW 2010a) ('the Due Diligence Code') and aims to establish whether any Aboriginal objects or Aboriginal places would be harmed, or would be likely to be harmed, by the proposed activity and to ascertain whether further investigation is required.

If the ADD identifies further investigation is required if potential impacts are significant, an Aboriginal Cultural Heritage Assessment may be necessary as outlined in the SEARs.

1.1. SUBJECT AREA

The subject area is located at 2-8 Highgate Road, Lindfield, NSW, legally described as Lots 100-103 DP 6608 ('the subject area'). Located within the Ku-ring-gai Local Government Area, the subject area is approximately 11km northwest of the Sydney CBD. The total area is 4,741m² and is currently zoned R2 low density residential under the *Ku-ring-gai Local Environment Plan 2015*. Currently comprised of low-density residential dwellings, the subject area is bounded by Reid Street to the north, Highgate Road to the east, Woodside Avenue to the south, and Lindfield Avenue to the west.

1.2. PROPOSED WORKS

The proposed works comprises the construction of a 9-storey residential flat building containing 84 apartments. The physical works as part of the development include demolition of the existing buildings, excavation (8.2 metres below ground surface) the construction of two basement levels and earthworks to construct the proposed building.

Plans of the proposed development are provided in Figure 3 to Figure 7.

1.3. STATUTORY CONTROLS

1.3.1. Environment Protection and Biodiversity Conservation Act 1999

The *Environment Protection and Biodiversity Conservation Act 1999* (Cth) ('the EPBC Act') provides protection for properties and places listed on the World Heritage List ('WHL'), the National Heritage List ('NHL') and the Commonwealth Heritage List ('CHL').

The WHL is a list of properties around the world considered to be of outstanding value to humanity, the NHL is a list of places of outstanding significance to the nation and the CHL is a list heritage places owned or controlled by the Australian Government. The WHL, NHL and CHL may include properties and places of Aboriginal heritage significance, in addition to places of natural and historical significance.

It is an offence under sections 15A, 15C, 27A and 27C of the EPBC Act to take any action that is likely to have a significant impact of the relevant heritage values of a place listed on the WHL, NHL or CHL. Approval from the Minister is required for controlled actions which will have a significant impact on items and places included on the WHL, NHL or CHL.

Properties and places listed on the WHL, NHL or CHL, are included in the Australian Heritage Database ('AHD'). The AHD also includes places under consideration, or that may have been considered, for any one of these lists. A search of the AHD was undertaken on 31 January 2025. The search did not identify any Aboriginal heritage properties or places within the curtilage of the subject area that are protected under the EPBC Act.

1.3.2. The National Parks and Wildlife Act 1974

The *National Parks and Wildlife Act 1974* (NSW) ('the NPW Act') and *National Parks and Wildlife Regulation 2019* (NSW) ('the NPW Reg') protect 'Aboriginal objects' and 'Aboriginal places' in NSW.

The NPW Act defines 'Aboriginal objects' and 'Aboriginal places' as follows:

- **Aboriginal object** means any deposit, object or material evidence (not being a handicraft made for sale) relating to the Aboriginal habitation of the area that comprises New South Wales, being habitation before or concurrent with (or both) the occupation of that area by persons of non-Aboriginal extraction, and includes Aboriginal remains.
- **Aboriginal place** means any place, which may or may not contain Aboriginal objects, that is declared to be an Aboriginal place under section 84 of the NPW Act because it is or was of special significance with respect to Aboriginal culture.

Under section 86 of the NPW Act, it is an offence to harm or desecrate an Aboriginal object or Aboriginal place. Section 87 of the NPW Act provides the following defences to prosecution under s. 86 of the NPW Act:

- The harm was to a previously unknown Aboriginal object, other than a modified tree, and was caused by a low impact activity as defined in reg. 58 of the NPW Reg.
- The harm was to a previously unknown Aboriginal object and due diligence was exercised by the Proponent to determine whether the activity would harm an Aboriginal object and reasonably determined that no Aboriginal object would be harmed, per section 87(2) of the NPW Act.
- The harm or desecration was authorised by an Aboriginal Heritage Impact Permit ('AHIP'), per section 87(1) of the NPW Act.
- The harm or desecration was authorised by an approved State Significant Development Application, per section 4.41(1)(d) of the *Environmental Planning and Assessment Act 1979* (NSW).

Regulation 58 of the NPW Reg defines 'low impact' activities as:

- Maintenance of existing roads, fire and other trails and tracks and existing utilities and other similar services, on disturbed land.
- Farming and land management work for cropping and leaving paddocks fallow, the construction of water storage works, the construction of fences, the construction of irrigation infrastructure, ground water bores or flood mitigation works, or the construction of erosion control or soil conservation works (such as contour banks), on disturbed land.
- Farming and land management work that involved the maintenance of existing grain, fibre or fertiliser storage areas, existing water storage works, existing irrigation infrastructure, ground water bores or flood mitigation works, existing fences, or existing erosion control or soil conservation works.
- The grazing of animals.
- An activity on land that has been disturbed that comprises exempt development or was the subject of a complying development certificate issued under the *Environmental Planning and Assessment Act 1979*.
- Mining exploration work that involved costeaning, bulk sampling or drilling, on disturbed land.
- Geological mapping, surface geophysical surveys (excluding seismic surveys), sub-surface geophysical surveys that involve downhole logging and sampling and coring using hand-held equipment (except when carried out as part of an archaeological investigation).
- The removal of isolated, dead or dying vegetation, but only if there is minimal disturbance to the surrounding ground surface.
- Seismic surveying and the construction and maintenance of ground water monitoring bores on disturbed land.
- Environmental rehabilitation work (excluding erosion control or soil conservation works).

For the purposes of the above, land is 'disturbed' if it has been the subject of a human activity that has changed the land's surface, being changes that remain clear and observable (reg. 58(4)).

The proposed works described in Section 0 above are not 'low impact' activities as defined in reg. 58 of the NPW Reg. Therefore, the present ADD was undertaken to exercise due diligence to determine whether the proposed activity would harm an Aboriginal object or Aboriginal place.

1.4. METHODOLOGY

In accordance with section 87(3) of the NPW Act, due diligence may be exercised by compliance with the requirements set out in the NPW Regulation or a code of practice adopted or prescribed by the NPW Regulation.

The present ADD was undertaken in accordance with the generic due diligence process described in Section 8 of the Due Diligence Code. It is noted that there is an inconsistency between the due diligence process depicted in the flowchart on page 10 of the Due Diligence Code and the process described on pages 11 to 14. The latter was adopted in *Williams v Graham* [2016] NSWLEC 151 and has been applied for the present ADD.

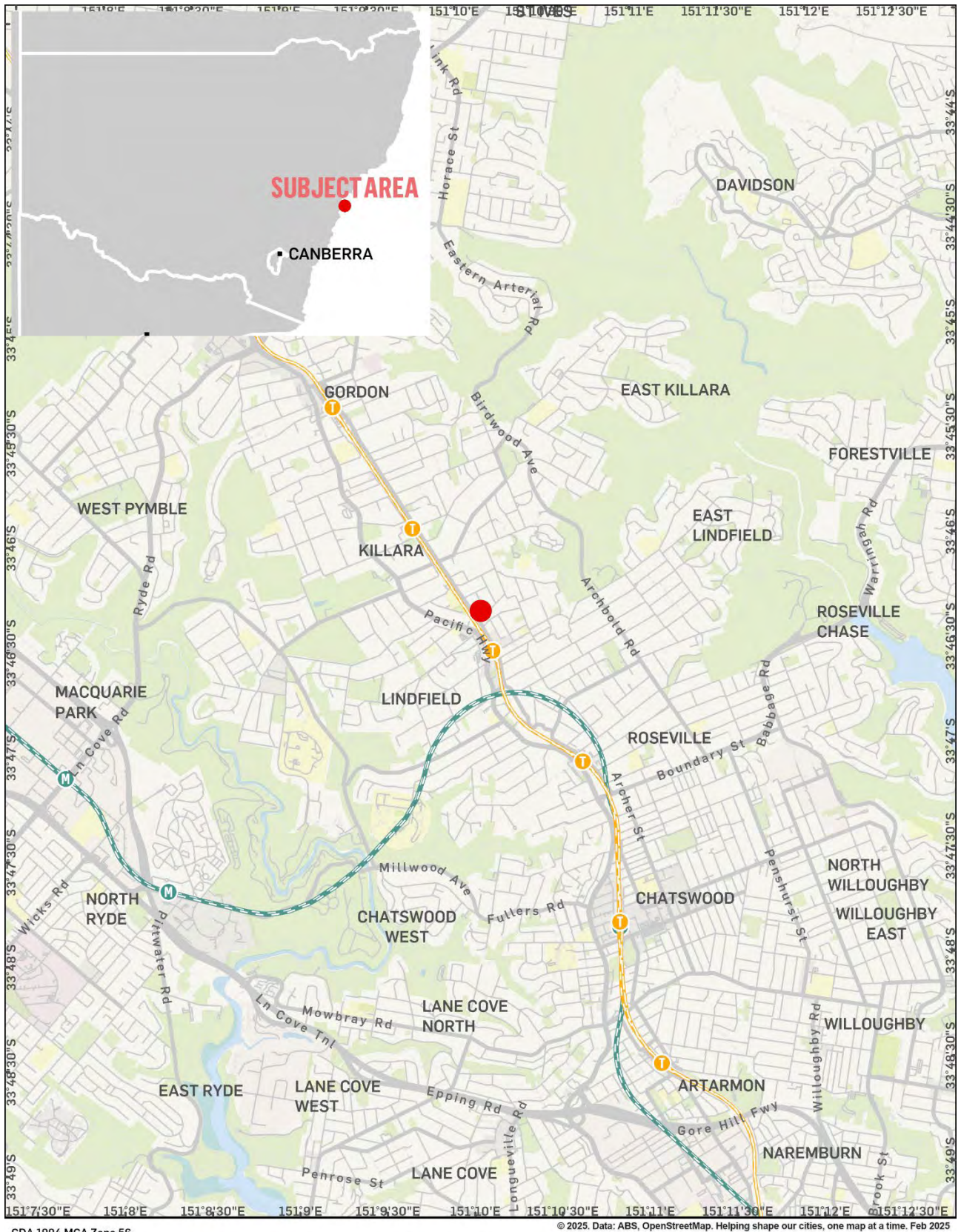
The ADD included the following:

- Searches of the Australian Heritage Database ('AHD'), Aboriginal Heritage Information Management System ('AHIMS') and State Heritage Inventory ('SHI')
- Review of previous archaeological assessments relevant to the subject area
- Landscape analysis
- Analysis of historical land use and its impact on the subject area
- Visual inspection of the subject area

1.5. LIMITATIONS

The ADD is limited to consideration of Aboriginal objects and places. Historical heritage properties and places protected under the *Environment Protection and Biodiversity Conservation Act 1999* (Cth) and historical heritage items and relics protected under the *Heritage Act 1977* (NSW) are not considered.

The ADD is limited to the due diligence process outlined in the Due Diligence Code. The ADD did not include consultation with the Aboriginal community or consideration of intangible cultural heritage.



REGIONAL LOCATION
 Ku-Ring-Gai LGA Sites
 CPDM

Figure 1 – Regional location



GDA 1994 MGA Zone 56

© 2025. Data: ABS, OpenStreetMap, Nearmap. Helping shape our cities, one map at a time. Feb 2025



Project No: P0058132
 Project Manager: Ali Byrne

Subject Area — Contours

LOCATION OF THE SUBJECT AREA
 Ku-Ring-Gai LGA Sites
 CPDM

Figure 2 – Location of the subject area

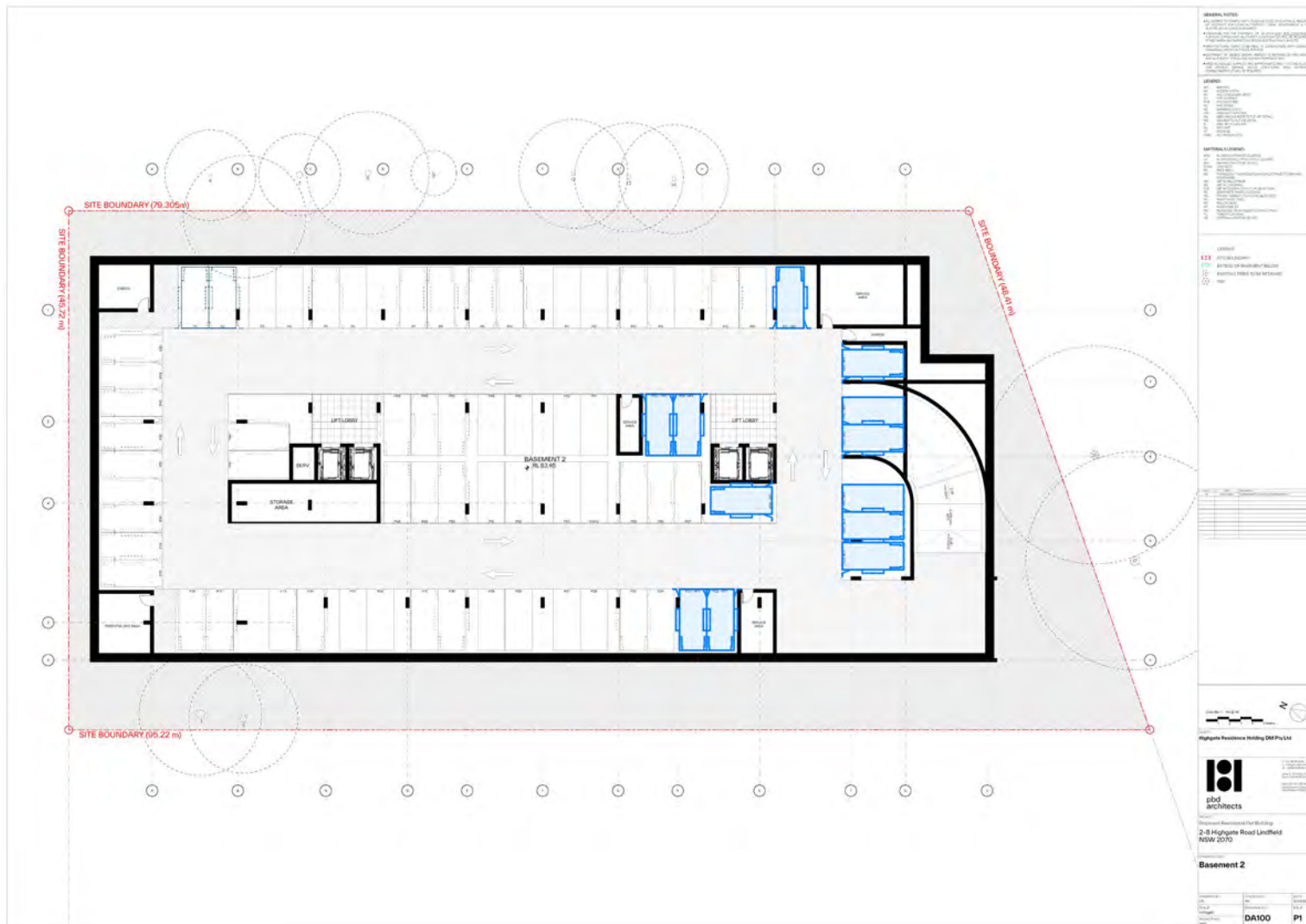


Figure 3 – Basement 2 plan of the proposed development.

Source: Phd Architects

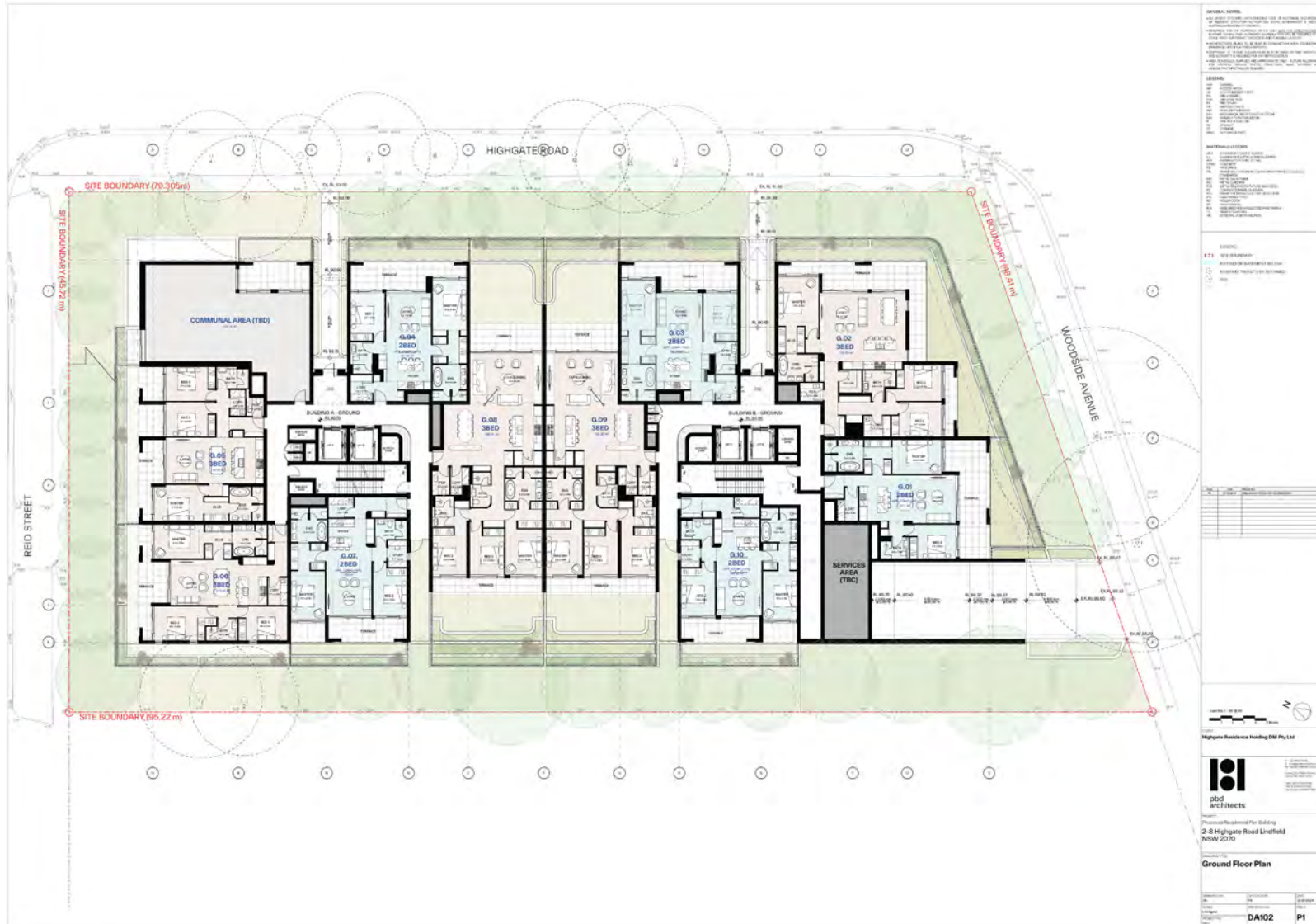


Figure 5 – Ground floor plan of the proposed development.

Source: Phd Architects

8 The generic due diligence process

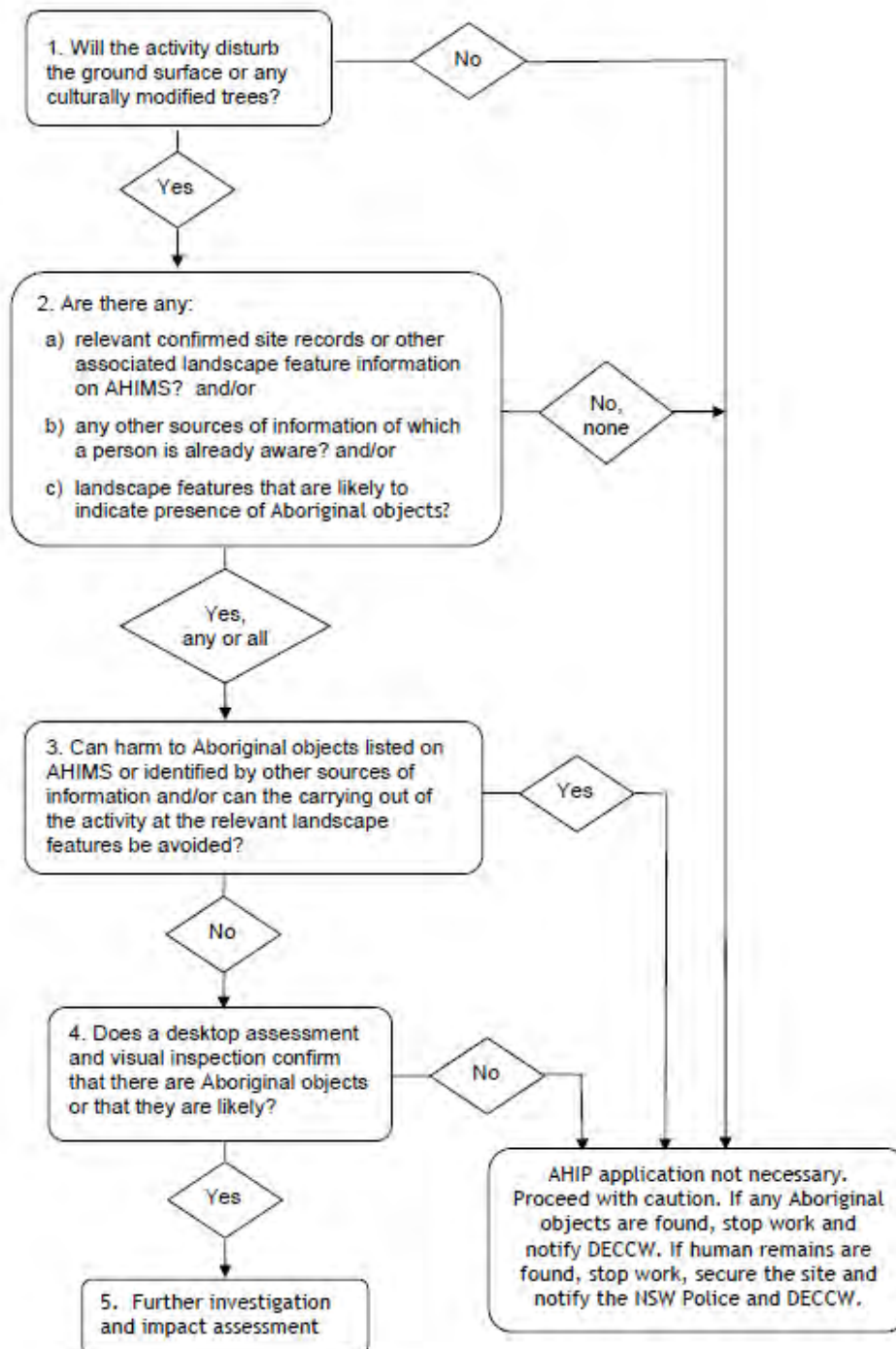


Figure 8 - Generic Due Diligence Process

Source: DECCW, 2010

2. ABORIGINAL CULTURAL HERITAGE

The following discussion of archaeological context, environmental context and the visual inspection of the subject area provides the relevant background information necessary for applying the due diligence process to the subject area.

2.1. ARCHAEOLOGICAL CONTEXT

2.1.1. Declared Aboriginal Places

The NSW State Heritage Inventory (SHI) includes all declared Aboriginal places within NSW, in addition to historic heritage items listed on the State Heritage Register (SHR), listed Interim Heritage Orders (IHOs) and items listed on Local Environment Plans (LEPs) and State Environmental Planning Policies (SEPPs).

A search of the SHI was undertaken on 5 February 2025. Items listed on the SHI in the vicinity of the subject area are shown in Figure 9. The search identified there were no heritage items within the curtilage of the subject area.

2.1.2. Registered Aboriginal Objects

The Aboriginal Heritage Information Management System (AHIMS) is a database of registered Aboriginal sites in NSW. Each registered Aboriginal site includes one or more site 'features', which may be considered an Aboriginal object under the NPW Act.

The *Guide to completing the AHIMS Site Recording Form* (OEH 2012) lists 20 different features that may be recorded on AHIMS. The most common site features registered in NSW are artefacts, modified trees, art, grinding grooves and shell deposits (see Glossary for definitions). However, the likelihood of any particular site feature being found will vary according to region and environment. Less common site features that are encountered are burials, ceremonial rings, earth mounds, fish traps, habitation structures, hearths, non-human bone and organic material, ochre quarries, stone arrangements and stone quarries (see Glossary for definitions).

Other Aboriginal site features that are recorded on AHIMS but are not necessarily 'Aboriginal objects' within the meaning of that term as it is defined in the NPW Act (i.e. are not a 'deposit, object or material evidence... relating to the Aboriginal habitation of the area') are potential archaeological deposits (PADs), Aboriginal ceremony and dreaming sites, Aboriginal resource and gathering sites, conflict sites and waterholes (see Glossary for definitions). These features are only considered to be 'Aboriginal objects' for the purpose of the NPW Act if accompanied by at least one of the other site types defined above.

The AHIMS database also provides information on the context of registered Aboriginal sites. Sites that are recorded as 'closed' contexts' are those that include a cave or rock overhang, while all other sites are recorded as 'open' context.

It should be noted that the AHIMS register does not represent a comprehensive list of all Aboriginal objects or places as it is limited to sites that have been previously identified and registered. Registration is typically the result of previous archaeological investigation, so the number of registered Aboriginal sites in area is dependent on the amount of such research previously undertaken.

The search of the broader region around the subject area was undertaken to determine if: (i) there are any registered Aboriginal sites near the subject area that might extend into it; and (ii) to determine if there is any association of Aboriginal sites certain landscape features within the broader region that may be instructive for determining the likelihood of Aboriginal sites within the subject area.

A search of the Aboriginal Heritage Information Management System (AHIMS) was carried out on 3 February 2025 (AHIMS Client Service IDs: 971152 and 971198) for an area of approximately 3 km x 3 km centred on the subject area. The search of the AHIMS register did not identify any Aboriginal objects or Aboriginal places within the curtilage of the subject area.

In the broader search area, a total of 63 Aboriginal objects, and no Aboriginal places are registered. One of the recorded Aboriginal objects were identified as 'not a site' in the search results, reducing the total number of identified Aboriginal objects to 62. The locations of the 62 identified Aboriginal sites are shown in Figure 10 and Figure 11. The Basic and Extensive AHIMS search results are included in AHIMS search results. The number and types of site features in the search area are presented in Table 2. The results of the search are discussed below.

Among the 62 registered Aboriginal sites in the search area, a total of five site features were identified:

- Art
- Artefact
- Grinding Grooves
- PAD
- Shell

Art sites are the most common site type within the Extensive search area. The contexts of the registered Aboriginal sites within the AHIMS search area are also summarised below. Closed context sites are those that include a cave or rock overhang, while open context sites are those without a cave or rock overhang. Most registered Aboriginal sites in the search area are in a Closed context, representing 65% (n = 40) of all sites.

As noted in the Due Diligence Code, Aboriginal sites are likely to occur within close proximity to a water source. In Figure 10, the majority of Aboriginal sites are clustered around the tributaries of Middle Harbour and the Lane Cove River which fulfils the predictive models hypothesis.

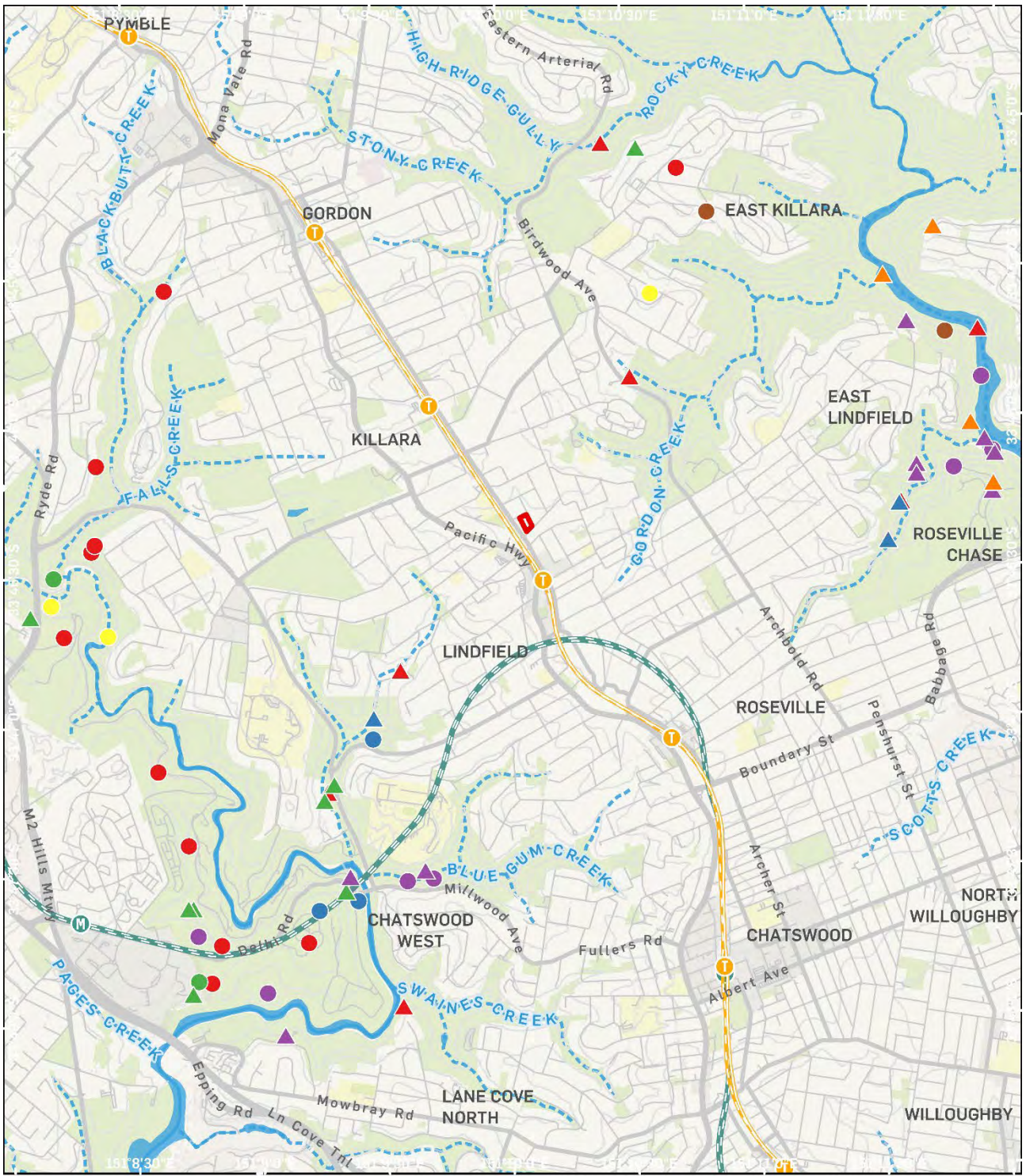
Table 2 – Summary of registered Aboriginal sites in AHIMS search area

Site Features	Context	Number	% of Features
Art	Open & Closed	26	28.6%
Artefact	Open & Closed	32	35.2%
Grinding Grooves	Open	5	5.5%
PAD	Open	6	6.6%
Shell	Open	22	24.2%
Total		91	100%

The search did not identify any Aboriginal objects or Aboriginal places within 500 m of the subject area.

2.1.3. Previous Archaeological Investigations

Previous archaeological investigations may provide information on known or potential Aboriginal archaeological resources in a subject area. No relevant investigations have been identified that relate directly to the present subject area.



GDA 1994 MGA Zone 56

© 2025. Data: ABS, OpenStreetMap, Nearmap. Helping shape our cities, one map at a time. Feb 2025



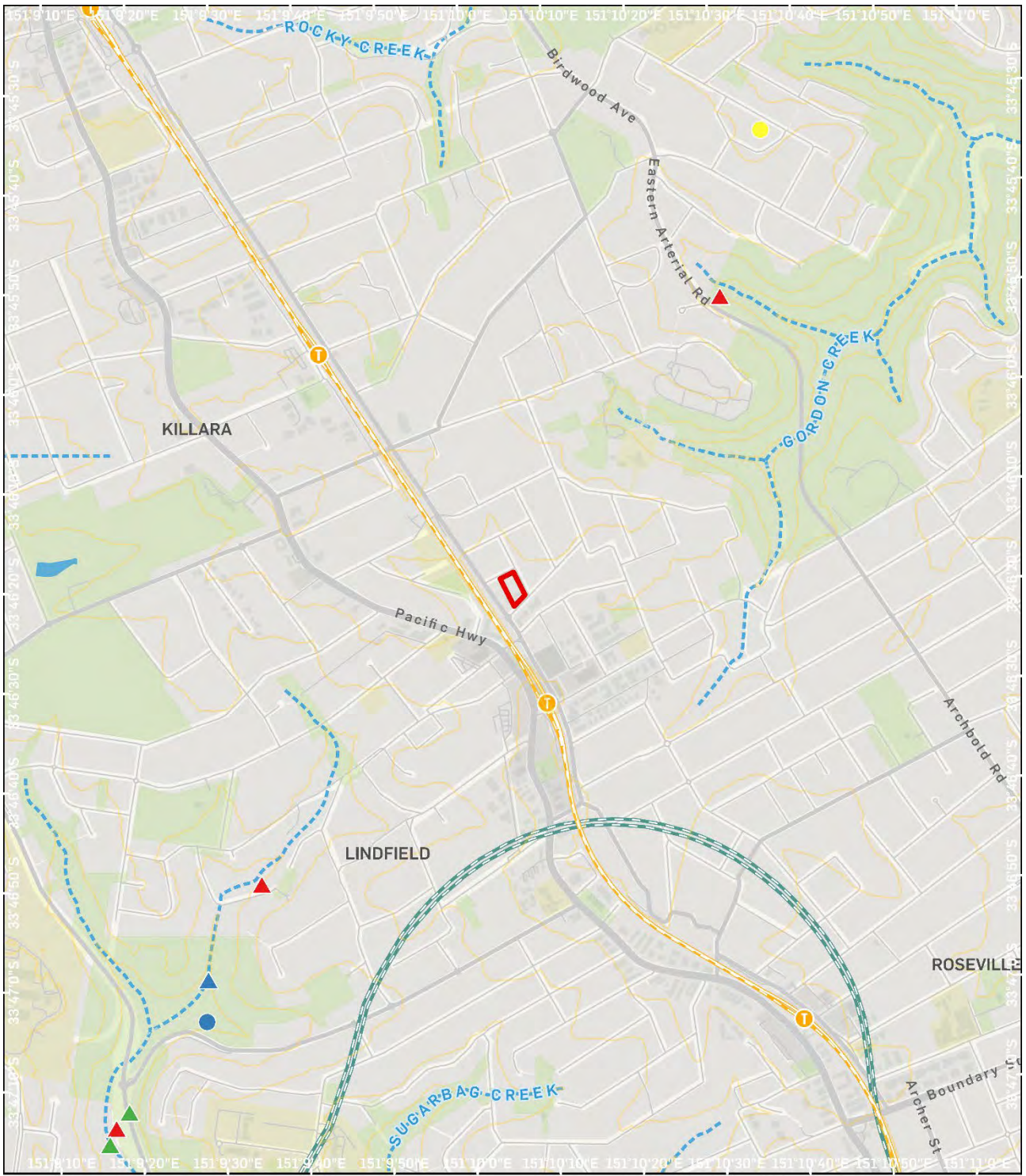
Project No: P0058132
Project Manager: Ali Byrne

AHIMS SITES IN EXTENSIVE SEARCH AREA

Ku-Ring-Gai LGA Sites
CPDM

- | | | | |
|--------------|-------------|-----------------|-----------------------|
| Subject Area | Closed site | Art | Art, Artefact, Shell |
| Contours | Open site | PAD | Grinding Grooves |
| Permanent | | Artefact | Art, Grinding Grooves |
| Ephemeral | | Artefact, Shell | |
| Hydrology | | | |

Figure 10 – AHIMS sites in Extensive search area



GDA 1994 MGA Zone 56

© 2025. Data: ABS, OpenStreetMap, Nearmap. Helping shape our cities, one map at a time. Feb 2025



Project No: P0058132
Project Manager: Ali Byrne

AHIMS SITES IN PROXIMITY
Ku-Ring-Gai LGA Sites
CPDM

- Subject Area
- Contours
- Ephemeral
- Hydrology
- ▲ Closed site
- Open site
- Art
- PAD
- Artefact
- Grinding Grooves

Figure 11 – AHIMS sites within proximity to subject area

2.2. ENVIRONMENTAL CONTEXT

2.2.1. Landscape Features

Aboriginal objects may be associated with certain landscape features that played a part in the everyday lives and traditional cultural activities of Aboriginal people. The Due Diligence Code specifies the following landscape features are indicative of likely past Aboriginal land use:

- Areas within 200 m of waters including freshwater and the high tide mark of shorelines.
- Areas located within a sand dune system.
- Areas located on a ridge top, ridge line or headland.
- Areas located within 200 m below or above a cliff face.
- Areas within 20 m of or in a cave, rock shelter, or a cave mouth.

The above landscape features are defined in the Glossary of this report. Only the terms 'waters' and 'dune' are explicitly defined in the Due Diligence Code.

Topography: The subject area is located on the lower slope of the ridgeline the Pacific Highway was built on (Figure 13). It is not located on a ridge top, ridge line or headland, within 200 m below or above a cliff face or within 20 m of or in a cave, rock shelter, or a cave mouth.

Hydrology: The closest existing natural water source to the subject area is Gordon Creek which is located 650 m away to the northeast. Gordon Creek is a tributary of Middle Harbour and flows in a south-westerly direction within Garigal National Park. However, historical mapping shows that prior to the modern development of the site, a creek line ran approximately 50 metres to the south-west of the subject area (Figure 12). Therefore, the subject area is within 200 metres of waters.

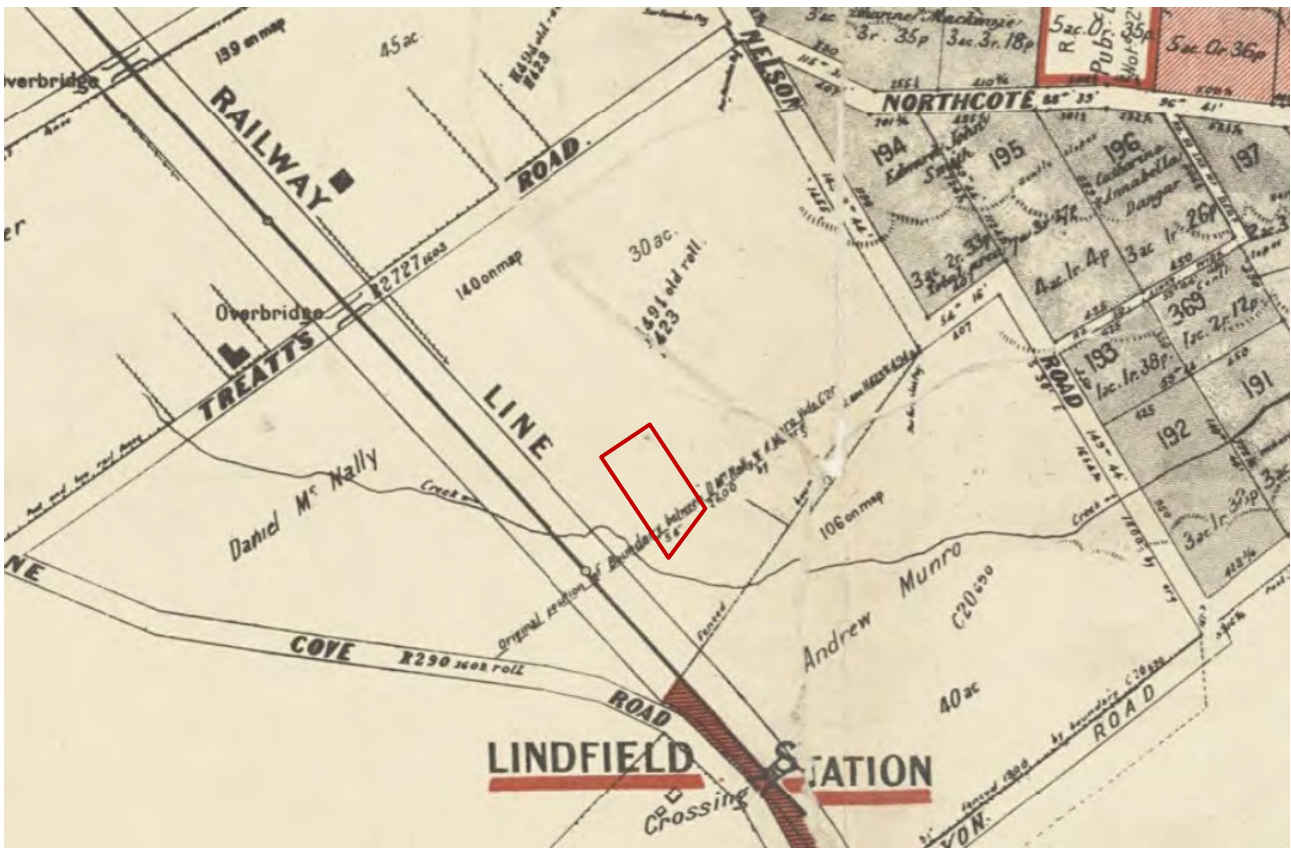
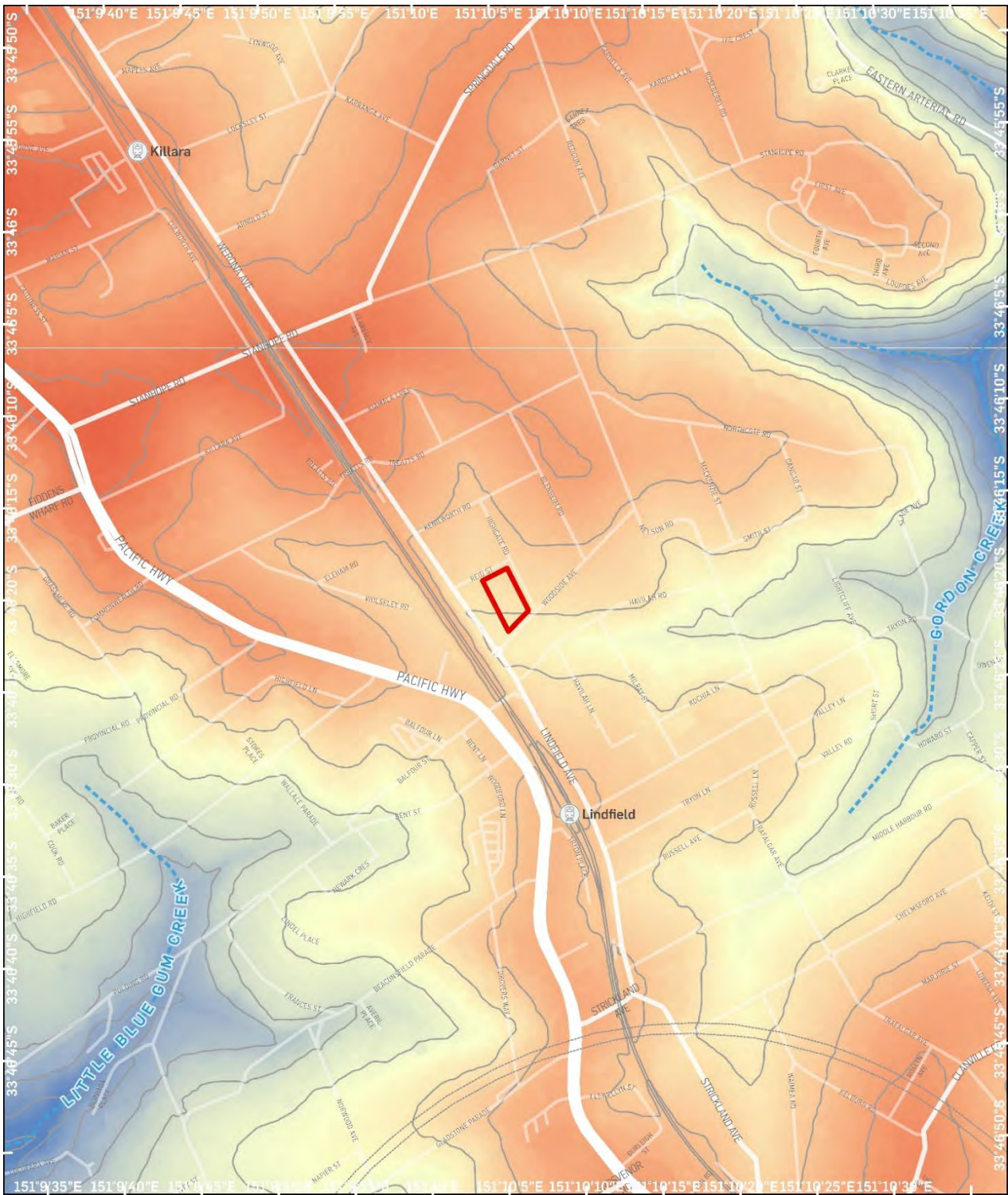


Figure 12 – Historical map from 1899 showing a creek line running to the south-west of the subject area (indicated in red).

Source: Record call number: Z/M3 811.1441/1899/1

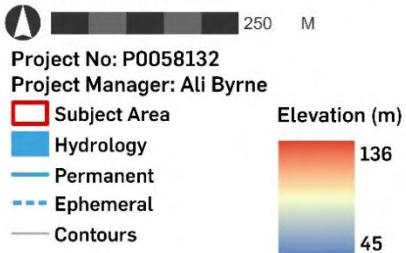
Soil landscape: The NSW Soil and Land Information System (SALIS) provides information on expected soil landscapes within NSW. The subject area is located within the Glenorie soil landscape (Figure 14). It is not located within a sand dune system.

Based on the above, there is **one landscape feature** that indicates likely past Aboriginal land use as a creek once flowed through the subject area, placing it within 200 metres of a watercourse.



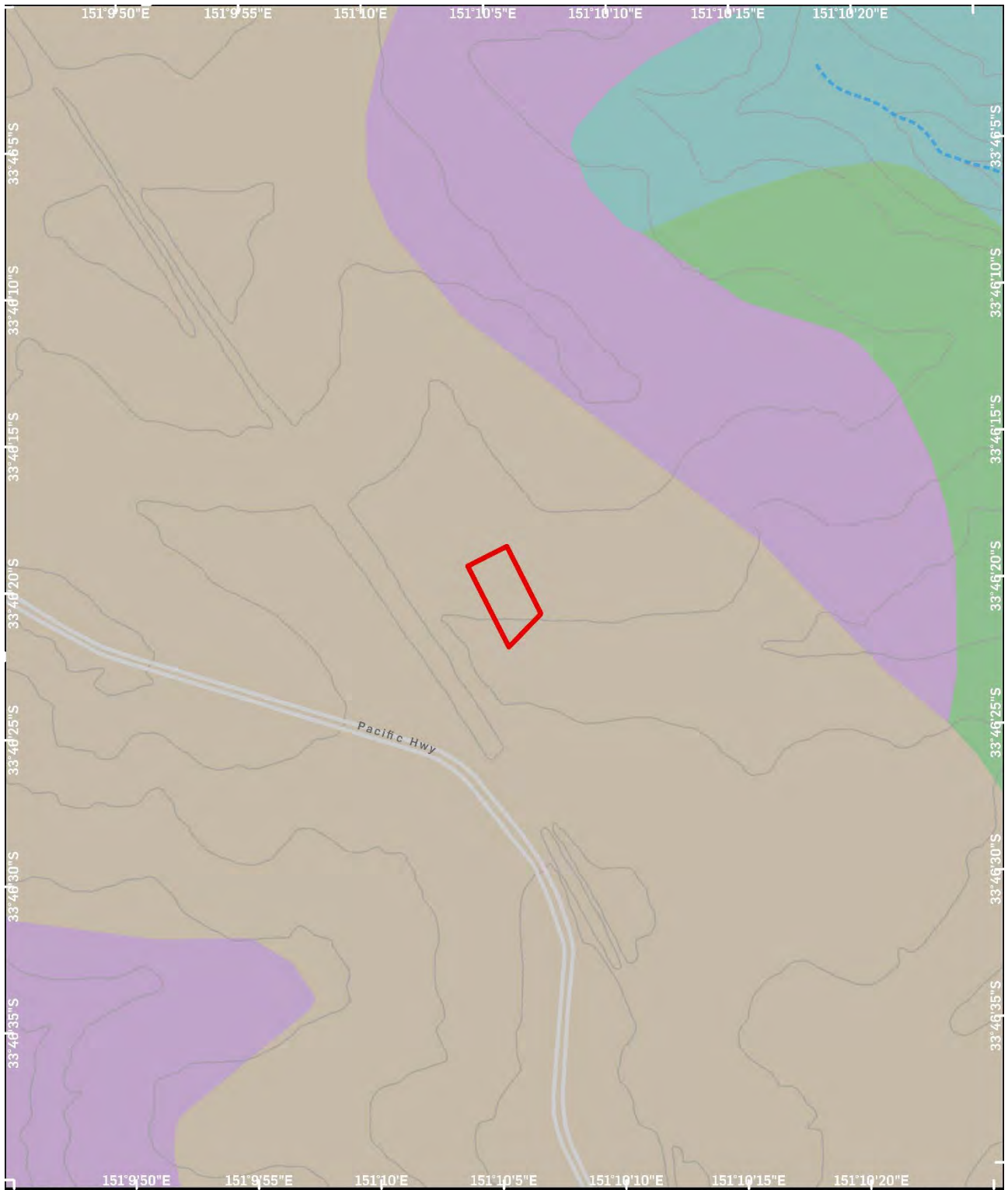
GDA 1994 MGA Zone 56

© 2025. Data: ABS, OpenStreetMap. Helping shape our cities, one map at a time. Feb 2025



TOPOGRAPHY
Ku-Ring-Gai LGA Sites
CPDM

Figure 13 – Topography



GDA 1994 MGA Zone 56

© 2025. Data: ABS, OpenStreetMap. Helping shape our cities, one map at a time. Feb 2025



SOIL LANDSCAPES AND HYDROLOGY

Ku-Ring-Gai LGA Sites
CPDM

Project No: P0058132

Project Manager: Ali Byrne

- | | | |
|--------------|----------|--------------------------|
| Subject Area | Contours | GLENORIE (Erosional) |
| Hydrology | | GYMEA (Erosional) |
| Permanent | | HAWKESBURY (Colluvial) |
| Ephemeral | | LUCAS HEIGHTS (Residual) |

Figure 14 – Soil landscapes and hydrology

2.2.2. Historical Ground Disturbance

Disturbance to the landscape after Aboriginal use reduces the likelihood for Aboriginal objects being retained, either through destruction of the Aboriginal objects or their removal.

According to the Due Diligence Code, land is disturbed if it has been the subject of a human activity that has changed the surface of the land, being changes that remain clear and observable. The Due Diligence Code provides the following examples of activities that may have disturbed land:

- Ploughing
- Construction of rural infrastructure (such as dams and fences)
- Construction of roads, trails and tracks (including fire trails and tracks and walking tracks)
- Clearing vegetation
- Construction of buildings and the erection of other structures
- Construction or installation of utilities and other similar services (such as above or below ground electrical infrastructure, water or sewerage pipelines, stormwater drainage and other similar infrastructure)
- Construction of earthworks

The Lindfield area was initially subdivided in the early 19th Century. The first identified map is noted as from 1840 showing the rapid development of the Lindfield and surrounding areas (Figure 15). The Pacific Highway was the main thoroughfare through North Sydney leading to northern NSW. The subject area is located within a 30-acre allotment of land granted to Daniel McNally. Broadly during this time Lindfield was subject to timber-getting and farming (Edwards and Rowland, 2012). It is therefore likely then that the main ground disturbing activities during this time would have been associated with the clearing of vegetation, timber felling and agriculture.

The first identified aerial image from 1930 shows multiple residential buildings are located within separate lots within the subject area (Figure 16). These dwellings were likely constructed in the early 20th Century. In addition to the residential structures, driveways and fences were also established.

An aerial image from 1943 (Figure 17) shows there is little change over the following decade. However, there is evidence of landscaping in the garden spaces of properties. By 1986 (Figure 18), additional structures have been constructed in the yard spaces along the western boundary of the site including a pool at 4 Highgate Avenue. In the image from 2025 (Figure 19), further changes are observed at 2 Highgate Road to the south of the subject area. In this lot, a new dwelling with associated garage has been constructed replacing the previous one along with a swimming pool and driveway paving.

Geotechnical investigations also confirmed the presence of fill in the subject area indicating disturbance to the natural soil profile (Geotesta, 2024).

The historical activities described above have caused a high level of ground disturbance that remains clear and observable across the entirety of the subject area.



Figure 15 – 1840 map of the Gordon parish showing the approximate location of the subject area within Dan McNally's land grant indicated by the red arrow.

Source: SLNSW, Call number: Maps/0005



Figure 16 – 1930 aerial image of the subject area (outlined in red).

Source: NSW Spatial Services, Historical Imagery



Figure 17 – 1943 aerial image of the subject area (outlined in red).

Source: NSW Spatial Services, Historical Imagery



Figure 18 – 1986 aerial image of the subject area (outlined in red).

Source: NSW Spatial Services, Historical Imagery



Figure 19 – 2025 aerial image of the subject area (outlined in red).

Source: NearMap, 2025

2.3. VISUAL INSPECTION

A visual inspection of the subject area was undertaken to further investigate the environmental context of the subject area and to determine if any Aboriginal objects were present as surface expressions. The visual inspection of the subject area was undertaken by Urbis Consultants Pedro Silva and Natalie Taylor led by Michael Gee (CPDM) on 11 February 2025.

The visual inspection was undertaken in sunny conditions. Ground Surface Visibility (GSV) was estimated to be about 0% across the subject area due to surfaces were covered by turfing, gravel, brick, sandstone or concrete surfaces (driveways and footpaths) and mulched garden beds.

No Aboriginal objects were identified during the visual inspection.

The visual inspection confirmed that the entire site has been subject to various degrees of disturbance including the construction of the existing dwellings (Figure 20 and Figure 21), two pools located at 2 and 4 Highgate Road (Figure 22 and Figure 23) and an artificial pond at 2 Highgate Road (Figure 24). Landscaping and associated fill was evident throughout the site with young and mature planting suggesting a high level of bioturbation (Figure 25 and Figure 26). Many parts of the subject area were also covered with paved and concrete surfaces (Figure 26). Various service pits, drainage systems and plumbing connections were also identified (Figure 27).

Given the disturbances mentioned above, our visual inspection confirmed the high ground disturbance identified in the desktop research.



Figure 20 – Rear yard of No. 8 Highgate Road – view northeast.



Figure 21 – Front yard of No. 2 Highgate Road, view northeast.



Figure 22 – Pool in yard of at No. 4 Highgate Road, view west.



Figure 23 – Pool in front yard of at No. 2 Highgate Road, view south.



Figure 24 – Pond in front yard of at No. 2 Highgate Road, view south.



Figure 25 – Fill present in landscaped areas at No. 8 Highgate Road.



Figure 26 – Paving for carpark at No. 6 Highgate Road, view south-west.



Figure 27 – Underground servicing at No. 4 Highgate Road.

2.4. SUMMARY

The archaeological and environmental contexts of the subject area are summarised as follows:

- There are no known Aboriginal objects, or Aboriginal places registered within the curtilage of the subject area.
- No previous studies were identified that directly addressed the present subject area.
- The subject is within 200 metres of a prior creek line that ran to the west of the subject area prior to the development of this area.
- There is clear and observable ground disturbance that was identified by the desktop assessment and visual inspection.

3. DUE DILIGENCE ASSESSMENT

The due diligence process outlined in the Section 8 of the Due Diligence Code and illustrated in Figure 8 above is applied to the subject area below.

Step 1 – Will the activity disturb the ground surface?

YES

As discussed in Section 2.1.2 above, the proposed development comprises the construction of a 9-storey residential flat building and 2 basement levels. The physical works will therefore disturb the ground surface.

Step 2a – Are there any relevant confirmed site records on AHIMS or any other sources of information of which a person is aware?

NO

As discussed in Section 2.1.2 above, there are no registered sites within the subject area based on the results of the AHIMS search. No other sites were mentioned to be within the curtilage of the subject area by previous reports.

Step 2b – Are there any landscape features that are likely to indicate the presence of Aboriginal objects?

NO

The subject is within 200 metres of a prior creek line that ran through the subject area before the establishment of the existing drain line through the site. This landscape feature is considered indicative of likely past Aboriginal land use under the Due Diligence Code.

The Due Diligence Code specifies that the landscape features are of relevance only if the subject area has not been subjected to ground disturbance. Examples of disturbance include ploughing, construction of rural infrastructure (such as dams and fences), construction of roads, trails and tracks (including fire trails and tracks and walking tracks), clearing vegetation, construction of buildings and the erection of other structures, construction or installation of utilities and other similar services (such as above or below ground electrical infrastructure, water or sewerage pipelines, stormwater drainage and other similar infrastructure) and construction of earthworks.

The subject area has been subjected to human activity, including the construction of buildings, excavation for the construction of pools, landscaping and the installation of services that has changed the land's surface, being changes that remain clear and observable (Section 2.2.2). Therefore, there are no relevant landscape features to indicate the presence of Aboriginal objects.

Step 3 – Can you avoid harm to the object or disturbance of the landscape feature?

N/A.

The Due Diligence Code specifies that this step only applies if the proposed activity is on land that is not disturbed (or, implicitly, does not include any relevant landscape features) and does not contain known Aboriginal objects. As there are no known Aboriginal objects or Aboriginal places within the curtilage of the subject area and historical development and there are no landscape features that are likely to indicate the presence of Aboriginal objects, Step 3 of the Due Diligence process does not apply for assessment of the present subject area.

Step 4 – Does the Desktop Assessment and Visual Inspection Confirm that there are Aboriginal Objects or that they are Likely?

N/A.

The Due Diligence Code specifies that this step only applies if the proposed activity is on land that is not disturbed (or, implicitly, does not include any relevant landscape features) and does not contain known Aboriginal objects. As there are no known Aboriginal objects or Aboriginal places within the curtilage of the subject area and historical development and there are no landscape features that are likely to indicate the presence of Aboriginal objects, Step 4 of the Due Diligence process does not apply for assessment of the present subject area.

Step 5 – Outcome of Assessment

In accordance with the due diligence process described in the Due Diligence Code and outlined in Figure 8, the above assessment has determined that no further investigation is required for the subject area. Urbis recommends that the development proceed with caution, subject to the Unexpected Archaeological Finds and Human Remains Procedures being implemented (see Section 4 below).

4. CONCLUSIONS & RECOMMENDATIONS

The due diligence assessment concluded that:

- 1) The proposed activity is not a 'low impact activity' and will disturb the ground surface.
- 2) There are no known Aboriginal objects or Aboriginal places within the curtilage of the subject area.
- 3) No previous studies have been identified that directly address the present subject area.
- 4) A historical map from 1899 shows there was an ephemeral creek line running approximately 50 metres to the west of the subject area.
- 5) There is clear and observable ground disturbance within the entire subject area.
- 6) No further investigation is required as a result of the Due Diligence Assessment.

Based on the above conclusions, Urbis recommends the following:

Recommendation 1 – Record Keeping

- This ADD report should be kept as evidence of the Due Diligence Process having been applied to the subject area.

Recommendation 2 – No Further Investigation

- The development may proceed with caution, subject to the following archaeological chance finds and human remains procedures being implemented and followed.

Recommendation 3 – Submission of Report for SSDA 78493518

- This Aboriginal Objects Due Diligence Assessment should accompany the State Significant Development Application (SSD-78775458). The assessment has been prepared in accordance with the Due Diligence Code of Practice and has confirmed that no Aboriginal objects are likely to be present within the site. As such no further archaeological investigation is required.

Recommendation 4 – Unexpected Archaeological Finds Procedure

- Should any archaeological deposits be uncovered during any site works, the following steps must be followed:
 1. All works within the vicinity of the find must immediately stop and the location cordoned off with signage installed to stop any accidental impact to the finds. The find must not be moved 'out of the way' without assessment.
 2. The site supervisor or another nominated site representative must contact either the project archaeologist (if relevant) or Heritage NSW (Enviroline 131 555) to contact a suitably qualified archaeologist.
 3. The nominated archaeologist must examine the find, provide a preliminary assessment of significance, record the item and decide on appropriate management measures. Such management may require further consultation with Heritage NSW, preparation of a research design and archaeological investigation/salvage methodology and registration of the find with the Aboriginal Heritage Information Management System (AHIMS).
 4. Depending on the significance of the find, reassessment of the archaeological potential of the subject area may be required and further archaeological investigation undertaken.
 5. Reporting may need to be prepared regarding the find and approved management strategies.
 6. Works in the vicinity of the find can only recommence upon receipt of approval from Heritage NSW.

Recommendation 5 – Human Remains Procedure

- In the unlikely event that human remains are uncovered during the proposed works, the following steps must be followed:
 1. All works within the vicinity of the find must immediately stop and the location cordoned off with signage installed to stop any accidental impact to the finds.

2. The site supervisor or other nominated manager must notify the NSW Police and Heritage NSW (Enviroline 131 555).
3. The find must be assessed by the NSW Police, which may include the assistance of a qualified forensic anthropologist.
4. Management recommendations are to be formulated by the NSW Police, Heritage NSW and site representatives.
5. Works are not to recommence until the find has been appropriately managed.

5. REFERENCES

Department of Environment Climate Change and Water ('DECCW') 2010a, *Due Diligence Code of Practice for the Protection of Aboriginal Objects in New South Wales*

DECCW 2010b, *Code of Practice for Archaeological Investigation of Aboriginal Objects in NSW*

DECCW 2010c, *Aboriginal Cultural Heritage Consultation Requirements for Proponents*

Edwards, Z. and Rowland, J. (2012). Lindfield. [online] Dictionaryofsydney.org. Available at: <https://dictionaryofsydney.org/entry/lindfield>.

Environmental Planning and Assessment Act 1979 (NSW)

Environment Protection and Biodiversity Conservation Act 1999 (Cth)

Geotesta 2024 *Geotechnical Site Investigation 2 – 8 Highgate Road, Lindfield NSW 2070*

National Parks and Wildlife Act 1974 (NSW)

National Parks and Wildlife Regulation 2019 (NSW)

Office of Environment & Heritage ('OEH') 2011a, *Applying for an Aboriginal Heritage Impact Permit: Guide for applicants*

OEH 2011b, *Guide to Investigating, Assessing and Reporting on Aboriginal Cultural Heritage in NSW*

OEH 2012, *Guide to completing the AHIMS Site Recording Form*

6. DISCLAIMER

This report is dated 3 March 2025 and incorporates information and events up to that date only and excludes any information arising, or event occurring, after that date which may affect the validity of Urbis Ltd (**Urbis**) opinion in this report. Urbis prepared this report on the instructions, and for the benefit only, of CPDM (**Instructing Party**) for the purpose of an Aboriginal Objects Due Diligence Assessment (**Purpose**) and not for any other purpose or use. To the extent permitted by applicable law, Urbis expressly disclaims all liability, whether direct or indirect, to the Instructing Party which relies or purports to rely on this report for any purpose other than the Purpose, and to any other person which relies or purports to rely on this report for any purpose whatsoever (including the Purpose).

In preparing this report, Urbis was required to make judgements which may be affected by unforeseen future events, the likelihood and effects of which are not capable of precise assessment.

All surveys, forecasts, projections and recommendations contained in or associated with this report are made in good faith and on the basis of information supplied to Urbis at the date of this report, and upon which Urbis relied. Achievement of the projections and budgets set out in this report will depend, among other things, on the actions of others over which Urbis has no control.

In preparing this report, Urbis may rely on or refer to documents in a language other than English, which Urbis may arrange to be translated. Urbis is not responsible for the accuracy or completeness of such translations and disclaims any liability for any statement or opinion made in this report being inaccurate or incomplete arising from such translations.

Whilst Urbis has made all reasonable inquiries it believes necessary in preparing this report, it is not responsible for determining the completeness or accuracy of information provided to it. Urbis (including its officers and personnel) is not liable for any errors or omissions, including in information provided by the Instructing Party or another person or upon which Urbis relies, provided that such errors or omissions are not made by Urbis recklessly or in bad faith.

This report has been prepared with due care and diligence by Urbis and the statements and opinions given by Urbis in this report are given in good faith and in the reasonable belief that they are correct and not misleading, subject to the limitations above.

APPENDIX A

AHIMS SEARCH RESULTS



Urbis Pty Ltd - Angel Place L8 123 Pitt Street

Date: 03 February 2025

Level 8 123 Angel Street
 Sydney New South Wales 2000

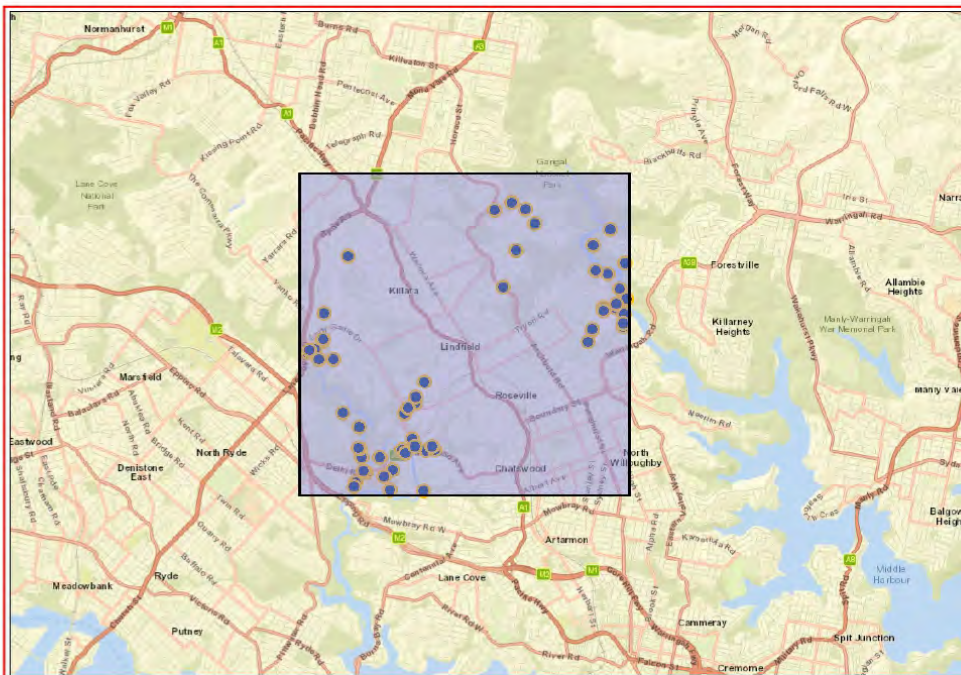
Attention: Kirsten Downey

Email: kdowney@urbis.com.au

Dear Sir or Madam:

AHIMS Web Service search for the following area at Datum :GDA, Zone : 56, Eastings : 327316.128 - 333316.128, Northings : 6258576.042 - 6264576.042 with a Buffer of 0 meters, conducted by Kirsten Downey on 03 February 2025.

The context area of your search is shown in the map below. Please note that the map does not accurately display the exact boundaries of the search as defined in the paragraph above. The map is to be used for general reference purposes only.



A search of Heritage NSW AHIMS Web Services (Aboriginal Heritage Information Management System) has shown that:

63	Aboriginal sites are recorded in or near the above location.
0	Aboriginal places have been declared in or near the above location. *

If your search shows Aboriginal sites or places what should you do?

- You must do an extensive search if AHIMS has shown that there are Aboriginal sites or places recorded in the search area.
- If you are checking AHIMS as a part of your due diligence, refer to the next steps of the Due Diligence Code of practice.
- You can get further information about Aboriginal places by looking at the gazettal notice that declared it. Aboriginal places gazetted after 2001 are available on the [NSW Government Gazette](https://www.legislation.nsw.gov.au/gazette) (<https://www.legislation.nsw.gov.au/gazette>) website. Gazettal notices published prior to 2001 can be obtained from Heritage NSW upon request

Important information about your AHIMS search

- The information derived from the AHIMS search is only to be used for the purpose for which it was requested. It is not to be made available to the public.
- AHIMS records information about Aboriginal sites that have been provided to Heritage NSW and Aboriginal places that have been declared by the Minister;
- Information recorded on AHIMS may vary in its accuracy and may not be up to date. Location details are recorded as grid references and it is important to note that there may be errors or omissions in these recordings.
- Some parts of New South Wales have not been investigated in detail and there may be fewer records of Aboriginal sites in those areas. These areas may contain Aboriginal sites which are not recorded on AHIMS.
- Aboriginal objects are protected under the National Parks and Wildlife Act 1974 even if they are not recorded as a site on AHIMS.
- This search can form part of your due diligence and remains valid for 12 months.

Level 6, 10 Valentine Ave, Parramatta 2150
Locked Bag 5020 Parramatta NSW 2124
Tel: (02) 9585 6345

ABN 34 945 244 274
Email: ahims@environment.nsw.gov.au
Web: www.heritage.nsw.gov.au



AHIMS Web Services (AWS) Extensive search - Site list report

Your Ref/PO Number : Reid Street Lindfield
Client Service ID : 971198

SiteID	SiteName	Datum	Zone	Easting	Northing	Context	Site Status **	SiteFeatures	SiteTypes	Reports
45-6-1848	East Killara;	AGD	56	331140	6263000	Open site	Valid	Grinding Groove :-	Axe Grinding Groove	1333
	Contact			Recorders	Warren Bluff				Permits	
45-6-0981	Lane Cove River	AGD	56	327792	6260874	Open site	Valid	Grinding Groove :-	Axe Grinding Groove	1899.98744
	Contact			Recorders	Mr.R.Taplin				Permits	
45-6-0613	Max Allen Track Kangaroo ENG (KUR069)	GDA	56	327687	6261396	Open site	Valid	Art (Pigment or Engraved) :-	Rock Engraving	1899.98744
	Contact			Recorders	Ms.Bronwyn Conyers,Mr.Oliver Descoeudres				Permits	
45-6-0627	Pyntale,Rocky Creek;	AGD	56	331490	6263506	Open site	Valid	Grinding Groove :- , Art (Pigment or Engraved) :-	Axe Grinding Groove,Rock Engraving	
	Contact			Recorders	Margrit Koettig				Permits	
45-6-2215	Terrace Road #2	GDA	56	327708	6261438	Open site	Valid	Art (Pigment or Engraved) :-	Rock Engraving	1899.98744
	Contact			Recorders	Ms.Bronwyn Conyers,DPIE - Armidale,Ms.Elise McCarthy				Permits	
45-6-2131	SSM 24418;	GDA	56	333259	6262035	Open site	Valid	Shell :- ,Artefact :-	Midden	
	Contact			Recorders	Michael Guider				Permits	
45-6-2268	Big River Cave;	AGD	56	328890	6258410	Closed site	Valid	Shell :- ,Artefact :-	Shelter with Midden	
	Contact			Recorders	Michael Guider				Permits	
45-6-2649	Lane Cove River PAD 1	AGD	56	327100	6259180	Open site	Valid	Potential Archaeological Deposit (PAD) :-		105564
	Contact			Recorders	Mr.Neville Baker				Permits	1470
45-6-2598	CSIRO 3 (CSIRO North Ryde) RYDE 010	GDA	56	328354	6258740	Open site	Valid	Artefact :-	Open Camp Site	4157.102489
	Contact			Recorders	Aboriginal Heritage Office,Ms.Tessa Corkill				Permits	
45-6-1946	Blue Gum Creek;	GDA	56	329645	6259364	Open site	Valid	Artefact :- ,Shell :-	Midden,Open Camp Site	
	Contact			Recorders	Michael Guider				Permits	
45-6-2216	Lane_Cove_#1	GDA	56	328497	6258962	Open site	Valid	Art (Pigment or Engraved) :-	Rock Engraving	1899
	Contact			Recorders	Ms.Bronwyn Conyers,DPIE - Armidale,Ms.Elise McCarthy				Permits	
45-6-2212	Blue Hole	AGD	56	327310	6260990	Closed site	Valid	Artefact :-	Shelter with Deposit	1899.98744
	Contact			Recorders	Ms.Bronwyn Conyers				Permits	
45-6-2115	MCW @East Lindfield;	GDA	56	332964	6262770	Open site	Valid	Grinding Groove :- , Art (Pigment or Engraved) :-	Axe Grinding Groove,Rock Engraving	
	Contact			Recorders	Michael Guider				Permits	

Report generated by AHIMS Web Service on 03/02/2025 for Kirsten Downey for the following area at Datum :GDA, Zone : 56, Eastings : 327316.128 - 333316.128, Northings : 6258576.042 - 6264576.042 with a Buffer of 0 meters.. Number of Aboriginal sites and Aboriginal objects found is 63

This information is not guaranteed to be free from error omission. Heritage NSW and its employees disclaim liability for any act done or omission made on the information and consequences of such acts or omission.

Page 1 of 5



AHIMS Web Services (AWS) Extensive search - Site list report

Your Ref/PO Number : Reid Street Lindfield
Client Service ID : 971198

SiteID	SiteName	Datum	Zone	Easting	Northing	Context	Site Status **	SiteFeatures	SiteTypes	Reports
45-6-2114	Middle Harbour Cave SWA (Duplicate)	GDA	56	333124	6262210	Closed site	Valid	Shell :- ,Artefact :- , Art (Pigment or Engraved) :-	Shelter with Art,Shelter with Midden	
	Contact			Recorders	Michael Guider,Mr.Oliver Descoeudres				Permits	
45-5-2585	LCNPM 2	AGD	56	328350	6259020	Open site	Valid	Shell :- ,Artefact :-	Midden	
	Contact			Recorders	Bobbie Oakley				Permits	
45-6-2370	Forestville Bend;	AGD	56	332580	6263120	Closed site	Valid	Shell :- ,Artefact :- , Art (Pigment or Engraved) :-	Shelter with Art,Shelter with Midden	3047
	Contact			Recorders	Val.Aitenbrow				Permits	
45-6-3336	Little Blue Gum Shelter PAD 2	GDA	56	329430	6260240	Open site	Valid	Potential Archaeological Deposit (PAD) : 1		
	Contact			Recorders	Mr.Phil Hunt				Permits	
45-6-3861	Riverside Drive Charcoal Art	GDA	56	328101	6260036	Open site	Valid	Art (Pigment or Engraved) :-		
	Contact			Recorders	DPIE - Armidale,Ms.Elise McCarthy				Permits	
45-6-1252	LC#4 Chatswood	AGD	56	328435	6258730	Open site	Valid	Art (Pigment or Engraved) :-	Rock Engraving	1899
	Contact			Recorders	P.Clark,Ms.Bronwyn Conyers				Permits	
45-6-0882	Lane Cove River,Gordon;	GDA	56	328134	6263010	Open site	Valid	Art (Pigment or Engraved) :-	Rock Engraving	
	Contact			Recorders	Charles D Power				Permits	
45-6-1079	Frenchs Forest,Golden Water Cove;	AGD	56	333167	6262789	Closed site	Valid	Art (Pigment or Engraved) :-	Shelter with Art	
	Contact			Recorders	Mr.R.Taplin				Permits	
45-6-1123	Lindfield,This Is The Way To Fall Exams Cave;	GDA	56	333265	6261790	Closed site	Valid	Shell :- ,Artefact :-	Shelter with Midden	
	Contact			Recorders	ASRSYS				Permits	
45-6-2577	River Bend;	AGD	56	327440	6261060	Open site	Valid	Grinding Groove :-	Axe Grinding Groove	98744
	Contact			Recorders	Michael Guider				Permits	
45-5-2584	NOT A SITE - LC NPM 1	GDA	56	328786	6259215	Open site	Not a Site	Shell :- ,Artefact :-	Midden	105375.105564
	Contact			Recorders	Bobbie Oakley,Coast History & Heritage ,Coast History & Heritage ,Miss.Gina Essle				Permits	5004
45-6-1078	Fymbble,Tin Abraded Cave,RC1;	GDA	56	330834	6263930	Closed site	Valid	Art (Pigment or Engraved) :-	Shelter with Art	
	Contact			Recorders	Doctor.Jo McDonald				Permits	
45-6-3588	Upper Gordon Creek - 1 KUR 161	GDA	56	331015	6262485	Closed site	Valid	Art (Pigment or Engraved) : 1		
	Contact			Recorders	Mr.Phil Hunt				Permits	

Report generated by AHIMS Web Service on 03/02/2025 for Kirsten Downey for the following area at Datum :GDA, Zone : 56, Eastings : 327316.128 - 333316.128, Northings : 6258576.042 - 6264576.042 with a Buffer of 0 meters.. Number of Aboriginal sites and Aboriginal objects found is 63

This information is not guaranteed to be free from error omission. Heritage NSW and its employees disclaim liability for any act done or omission made on the information and consequences of such acts or omission.

Page 2 of 5



AHIMS Web Services (AWS) Extensive search - Site list report

Your Ref/PO Number : Reid Street Lindfield
Client Service ID : 971198

SiteID	SiteName	Datum	Zone	Eastng	Northng	Context	Site Status **	SiteFeatures	SiteTypes	Reports
45-6-1558	Delhi Road,North Ryde, RYDE 009	GDA	56	329034	6258982	Open site	Valid	Art (Pigment or Engraved) :-	Rock Engraving	102489
	Contact	Recorders	Warren Bluff,Aboriginal Heritage Office							
45-6-2109	Ormonde Rd cave;	GDA	56	333259	6261784	Closed site	Valid	Shell :-,Artefact :-	Shelter with Midden	
	Contact	Recorders	Michael Guider							
45-6-2113	Moore's Creek Cave;East Lindfield; (duplicate copy of 45-6-2100)	AGD	56	332790	6261950	Closed site	Valid	Shell :-,Artefact :-	Shelter with Midden	
	Contact	Recorders	Michael Guider							
45-6-2129	MCW 5;	GDA	56	333189	6262490	Open site	Valid	Shell :-,Artefact :-	Midden	
	Contact	Recorders	Michael Guider							
45-6-2100	Moore's creek; (duplicate copy of 45-6-2113)	AGD	56	333020	6261930	Open site	Valid	Artefact :-,Shell :-	Midden,Open Camp Site	1809
	Contact	Recorders	Val Attenbrow,Michael Guider							
45-6-2234	LBG Creek 2;	AGD	56	329150	6259910	Closed site	Valid	Art (Pigment or Engraved) :-	Shelter with Art	
	Contact	Recorders	Michael Guider							
45-6-2236	Blue Gum Cave;	AGD	56	328320	6259190	Closed site	Valid	Artefact :-	Shelter with Deposit	
	Contact	Recorders	Michael Guider							
45-6-3043	Little Blue Gum Shelter PAD 1 KUR 082	GDA	56	329434	6260370	Closed site	Valid	Potential Archaeological Deposit (PAD) : 1		
	Contact	Recorders	Aboriginal Heritage Office							
45-6-1633	Pullers Park Lane Cove River SRA	GDA	56	329804	6259380	Open site	Valid	Shell :-,Artefact :-	Midden	1899
	Contact	Recorders	ASRSYS							
45-6-0883	Middle Harbour Creek;	GDA	56	332726	6262834	Closed site	Valid	Shell :-,Artefact :-	Shelter with Midden	637,2047
	Contact	Recorders	Val Attenbrow							
45-6-0610	Lane Cove River De Burgh's Bridge	AGD	56	327518	6260868	Open site	Valid	Art (Pigment or Engraved) :-	Rock Engraving	1899,98744
	Contact	Recorders	Unknown Author							
45-6-0611	Lane Cove River West Pymble	GDA	56	327715	6261925	Open site	Valid	Art (Pigment or Engraved) :-	Rock Engraving	1899,98744
	Contact	Recorders	Charles,D Power							
45-6-0626	Pymble,Rocky Creek;	AGD	56	331302	6263777	Open site	Valid	Art (Pigment or Engraved) :-	Rock Engraving	
	Contact	Recorders	ASRSYS							
45-6-2209	Carters creek	AGD	56	328290	6259190	Closed site	Valid	Artefact :-	Shelter with Deposit	1899
	Contact	Recorders	Ms Bronwyn Conyers,R Pallin							

Report generated by AHIMS Web Service on 03/02/2025 for Kirsten Downey for the following area at Datum :GDA, Zone : 56, Eastings : 327316.128 - 333316.128, Northings : 6258576.042 - 6264576.042 with a Buffer of 0 meters.. Number of Aboriginal sites and Aboriginal objects found is 63

This information is not guaranteed to be free from error omission, Heritage NSW and its employees disclaim liability for any act done or omission made on the information and consequences of such acts or omission.

Page 3 of 5



AHIMS Web Services (AWS) Extensive search - Site list report

Your Ref/PO Number : Reid Street Lindfield
Client Service ID : 971198

SiteID	SiteName	Datum	Zone	Eastng	Northng	Context	Site Status **	SiteFeatures	SiteTypes	Reports
45-6-2133	MHT 3;	GDA	56	333274	6262020	Closed site	Valid	Shell :-,Artefact :-	Shelter with Midden	
	Contact	Recorders	Michael Guider							
45-6-2214	Commandment Rock,LC#2	AGD	56	328290	6259580	Open site	Valid	Art (Pigment or Engraved) :-	Rock Engraving	1899
	Contact	Recorders	P Clark,Ms Bronwyn Conyers,D Brown							
45-6-2508	Delhi Road, RYDE 008	GDA	56	329264	6259300	Closed site	Valid	Artefact :-	Shelter with Deposit	102489,105564
	Contact	Recorders	W Walker,Mr David Crew,Aboriginal Heritage Office							
45-6-2210	Blue Gum creek	GDA	56	329754	6259430	Closed site	Valid	Shell :-,Artefact :-	Shelter with Midden	1899
	Contact	Recorders	Ms Bronwyn Conyers							
45-6-2136	Carroll Creek, Davidson Park S.R.A. Carroll Creek 1 Carroll Creek 2	AGD	56	332890	6263420	Closed site	Valid	Shell :-,Artefact :-, Art (Pigment or Engraved) :-	Shelter with Art,Shelter with Midden	1809,1911
	Contact	Recorders	Val Attenbrow,Michael Guider,K Cutmore							
45-6-2260	DSRA 8;Forestville;	AGD	56	333210	6262110	Closed site	Valid	Shell :-,Artefact :-	Shelter with Midden	
	Contact	Recorders	Michael Guider							
45-6-2373	Rocky creek;	AGD	56	331050	6263900	Closed site	Valid	Artefact :-	Shelter with Deposit	
	Contact	Recorders	Val Attenbrow,Doctor Jo McDonald							
45-6-3045	Upper Moore's Creek 1 KUR 102	GDA	56	332684	6261710	Closed site	Valid	Potential Archaeological Deposit (PAD) : 1		
	Contact	Recorders	Aboriginal Heritage Office							
45-6-3165	UPPER MOORES CK-3 KUR160	GDA	56	332615	6261480	Closed site	Valid	Potential Archaeological Deposit (PAD) :-		
	Contact	Recorders	Mr.Phil Hunt							
45-6-2211	Lane Cove 3	AGD	56	328780	6258670	Open site	Valid	Shell :-,Artefact :-	Midden	1899
	Contact	Recorders	Ms Bronwyn Conyers							
45-6-2213	DeBurghs Bridge	GDA	56	327454	6261230	Open site	Valid	Artefact :-, Habitation Structure :-	Shelter with Deposit	1899
	Contact	Recorders	Ms Bronwyn Conyers,DPIE - Armidale,Ms.Elise McCarthy							
45-6-2232	Depression Cave;	AGD	56	329290	6259390	Closed site	Valid	Shell :-,Artefact :-	Shelter with Midden	
	Contact	Recorders	Michael Guider							
45-6-2235	LBG Creek 3;	AGD	56	329130	6259860	Closed site	Valid	Artefact :-	Shelter with Deposit	
	Contact	Recorders	Michael Guider							

Report generated by AHIMS Web Service on 03/02/2025 for Kirsten Downey for the following area at Datum :GDA, Zone : 56, Eastings : 327316.128 - 333316.128, Northings : 6258576.042 - 6264576.042 with a Buffer of 0 meters.. Number of Aboriginal sites and Aboriginal objects found is 63

This information is not guaranteed to be free from error omission, Heritage NSW and its employees disclaim liability for any act done or omission made on the information and consequences of such acts or omission.

Page 4 of 5



AHIMS Web Services (AWS) Extensive search - Site list report

Your Ref/PO Number : Reid Street Lindfield
Client Service ID : 971198

SiteID	SiteName	Datum	Zone	Easting	Northing	Context	Site Status **	SiteFeatures	SiteTypes	Reports
45-6-3044	Upper Mooses Creek 2 KUR 103	GDA	56	332694	6261720	Closed site	Valid	Art (Pigment or Engraved) :-		
	Contact	Recorders	Aboriginal Heritage Office							
45-6-1653	Ironbarks Man (duplicate of 45-6-2216)	GDA	56	328496	6258962	Open site	Valid	Art (Pigment or Engraved) :-	Rock Engraving	
	Contact	Recorders	J Wyeth, Mr. Oliver Descouedres							
45-6-1698	Middle Harbour Cave SWA	GDA	56	333124	6262210	Closed site	Valid	Shell: -, Artefact: -, Art (Pigment or Engraved) :-	Shelter with Art, Shelter with Midden	
	Contact	Recorders	ASRSYS, Mr. Oliver Descouedres							
45-6-1122	Lindfield; Biology Book Caver	GDA	56	333265	6261835	Closed site	Valid	Art (Pigment or Engraved) :-, Shell: -, Artefact: -	Shelter with Art, Shelter with Midden	
	Contact	Recorders	Mr. R Taplin							
45-6-2132	Mooses Cr. 2	AGD	56	332790	6261890	Closed site	Valid	Shell: -, Artefact: -	Shelter with Midden	
	Contact	Recorders	Michael Guider							
45-6-1353	Swaines Creek; Red Arrow Cave	GDA	56	329620	6258590	Closed site	Valid	Art (Pigment or Engraved) :-	Shelter with Art	2047
	Contact	Recorders	Michael Guider							
45-6-2661	Linn Cove PAD 1	AGD	56	329340	6259240	Open site	Valid	Potential Archaeological Deposit (PAD) :-		
	Contact	Recorders	ERM Australia Pty Ltd. Sydney CBD							
45-6-2911	Cocupara Shelter 1	GDA	56	329599	6260665	Closed site	Valid	Art (Pigment or Engraved) :- 1		1689
	Contact	Recorders	Mr. Phil Hunt, Aboriginal Heritage Office							
45-6-2599	CSIRO 2 (CSIRO North Ryde) RYDE 011	GDA	56	328319	6258660	Closed site	Valid	Artefact: -	Shelter with Deposit	4157, 102489
	Contact	Recorders	Aboriginal Heritage Office, Ms. Tessa Corkill							
45-6-2233	LBC Creek 1	AGD	56	329190	6259960	Closed site	Valid	Artefact: -	Shelter with Deposit	
	Contact	Recorders	Michael Guider							

** Site Status

Valid - The site has been recorded and accepted onto the system as valid

Destroyed - The site has been completely impacted or harmed usually as consequence of permit activity but sometimes also after natural events. There is nothing left of the site on the ground but proponents should proceed with caution.

Partially Destroyed - The site has been only partially impacted or harmed usually as consequence of permit activity but sometimes also after natural events. There might be parts or sections of the original site still present on the ground

Not a site - The site has been originally entered and accepted onto AHIMS as a valid site but after further investigations it was decided it is NOT an aboriginal site. Impact of this type of site does not require permit but Heritage NSW should be notified

Report generated by AHIMS Web Service on 03/02/2025 for Kirsten Downey for the following area at Datum :GDA, Zone : 56, Eastings : 327316.128 - 333316.128, Northings : 6258576.042 - 6264576.042 with a Buffer of 0 meters. Number of Aboriginal sites and Aboriginal objects found is 63

This information is not guaranteed to be free from error omission. Heritage NSW and its employees disclaim liability for any act done or omission made on the information and consequences of such acts or omission.

Page 5 of 5