



93-107 Cecil Ave & 9-10 Roger Ave,
Castle Hill NSW 2154
Mixed-Use Development

OPERATIONAL WASTE MANAGEMENT PLAN

20/02/2026
Report No. 3510
Revision F

Client

Alton Property Group Pty Ltd

Architect

A Plus Design Group

<https://www.aplusedg.com.au/>

REVISION REFERENCE

Revision	Date	Prepared by	Reviewed by	Description
A	12/11/2024	S. Dib	T. McPherson	Draft
B	14/11/2024	T. McPherson	J. Parker	Amendment
C	09/12/2024	T. McPherson	J. Parker	Amendment
D	07/01/2026	T. McPherson	J. Parker	Paid Amendment
E	22/01/2026	T. McPherson	J. Parker	Updated Plans
F	20/02/2026	T. McPherson	J. Parker	Amendment

The information contained in this document produced by Elephants Foot Consulting (EFC) is solely for the use of the client identified on the cover sheet for the purpose for which it has been prepared for. EFC undertakes no duty, nor accepts any responsibility for any third party who may rely upon this document. Reproduction, publication or distribution of this document without written permission from EFC is strictly prohibited.

TABLE OF CONTENTS

1.0	ACKNOWLEDGEMENT OF COUNTRY	2
2.0	INTRODUCTION.....	2
2.1	SCOPE OF REPORT	3
2.2	REPORT CONDITIONS	4
3.0	LEGISLATION & GUIDANCE.....	5
4.0	SECRETARY ENVIRONMENTAL ASSESSMENT REQUIREMENTS (SEARS).....	6
5.0	DEVELOPMENT OVERVIEW.....	7
5.1	SITE LOCATION.....	8
6.0	RESIDENTIAL WASTE MANAGEMENT	9
6.1	RESIDENTIAL WASTE GENERATION ESTIMATES.....	9
6.2	RESIDENTIAL BIN SUMMARY	10
	STAGE 1: BUILDINGS E & S.....	10
	STAGE 2: BUILDINGS N & W.....	10
6.3	RESIDENTIAL CHUTE DISCHARGE EQUIPMENT SUMMARY	11
6.4	RESIDENTIAL WASTE DISPOSAL PROCEDURES.....	12
6.4.1	RESIDENTIAL GENERAL WASTE AND RECYCLING DISPOSAL PROCEEDURES 12	
6.4.2	RESIDENTIAL FOGO DISPOSAL PROCEDURES	12
6.5	RESIDENTIAL BIN COLLECTION PROCEDURES	13
6.6	OTHER RESIDENTIAL WASTE MANAGEMENT CONSIDERATIONS	14
6.6.1	RESIDENTIAL COMMON AREAS.....	14
6.6.2	LANDSCAPED AREAS AND GARDEN ORGANICS.....	14
6.6.3	RESIDENTIAL BULKY WASTE PROCEDURES.....	14
7.0	COMMERCIAL AND RETAIL WASTE MANAGEMENT	15
7.1	COMMERCIAL AND RETAIL WASTE GENERATION ESTIMATES.....	15
7.2	COMMERCIAL AND RETAIL BIN SUMMARY	16
7.2.1	RETAIL STAGE 1 AND 2.....	16
7.2.2	COMMERCIAL STAGE 1 AND 2.....	16
7.3	COMMERCIAL AND RETAIL WASTE DISPOSAL PROCEDURES.....	17
7.4	COMMERCIAL AND RETAIL WASTE COLLECTION PROCEDURES.....	17
7.5	OTHER COMMERCIAL AND RETAIL WASTE MANAGEMENT CONSIDERATIONS..	17
7.5.1	WASHROOM FACILITIES.....	17
7.5.2	PRINTING & PHOTOCOPYING ROOMS	17
7.5.3	FOOD WASTE	17
7.5.4	LIQUID WASTE	17
7.5.5	PROBLEM WASTE.....	17
8.0	STAKEHOLDER ROLES & RESPONSIBILITIES	19

9.0	SOURCE SEPARATION.....	20
10.0	EDUCATION.....	21
10.1	SIGNAGE.....	21
11.0	POLLUTION PREVENTION.....	22
12.0	BIN WASHING.....	22
13.0	BIN MOVING PATHS.....	22
14.0	EQUIPMENT SUMMARY.....	23
15.0	WASTE ROOMS.....	24
16.0	CONSTRUCTION REQUIREMENTS.....	28
16.1	ADDITIONAL CONSIDERATIONS.....	28
17.0	USEFUL CONTACTS.....	29
APPENDIX A:	ARCHITECTURAL PLANS.....	30
APPENDIX: A.1	LOWER GROUND FLOOR PLAN.....	31
APPENDIX B:	INSTALLATION EQUIPMENT.....	32
APPENDIX: B.1	TYPICAL DUAL CHUTE SHAFT & PENETRATION LAYOUT.....	33
APPENDIX: B.2	EXAMPLE RESIDENTIAL LEVEL RECYCLING BIN LAYOUT.....	34
APPENDIX: B.3	TYPICAL LINEAR TRACK SYSTEM FOR 1100L MGBS.....	35
APPENDIX C:	PRIMARY WASTE MANAGEMENT PROVISIONS.....	37
APPENDIX: C.1	TYPICAL BIN SPECIFICATIONS.....	38
APPENDIX: C.2	SIGNAGE FOR WASTE AND RECYCLING BINS.....	39
APPENDIX: C.3	EXAMPLE COLLECTION VEHICLE INFORMATION.....	41
APPENDIX D:	SECONDARY WASTE MANAGEMENT PROVISIONS.....	43
APPENDIX: D.1	EXAMPLE HANDHELD BIN MOVERS.....	44
APPENDIX: D.2	EXAMPLE BIN TRAILERS.....	45
APPENDIX: D.3	EXAMPLE BIN TOWING ATTACHMENTS.....	46
APPENDIX: D.4	EXAMPLE BIN LIFTER FOR 240L BINS.....	47
APPENDIX: D.5	EXAMPLE SOURCE SEPARATION RECEPTACLES.....	48

TABLE OF FIGURES

Figure 1: Staging Plan.....	7
Figure 2: Site Location.....	8
Table 1: Stage 1 Estimated Waste, Recycling and FOGO Volumes – Residential	9
Table 2: Stage 2 Estimated Waste, Recycling and FOGO Volumes – Residential	10
Table 3: Chute Discharge Equipment Summary – General Waste.....	11
Table 4: Chute Discharge Equipment Summary - Recycling.....	11
Table 5: Estimated Waste and Recycling Volumes – Retail Stage 1	15
Table 6: Estimated Waste and Recycling Volumes – Retail Stage 2	15
Table 7: Estimated Waste and Recycling Volumes – Commercial Stage 1	16
Table 8: Estimated Waste and Recycling Volumes – Commercial Stage 2	16
Table 9: Stakeholder Roles and Responsibilities	19
Table 10: Operational Waste Streams	20
Table 11: Equipment Summary.....	23
Table 12: Waste Room Areas – Stage 1	24
Table 13: Waste Room Areas – Stage 2	25
Table 14: Waste Room Requirements.....	27

LIST OF TABLES

Table 1: Stage 1 Estimated Waste, Recycling and FOGO Volumes – Residential	9
Table 2: Stage 2 Estimated Waste, Recycling and FOGO Volumes – Residential	10
Table 3: Chute Discharge Equipment Summary – General Waste.....	11
Table 4: Chute Discharge Equipment Summary - Recycling.....	11
Table 5: Estimated Waste and Recycling Volumes – Retail Stage 1	15
Table 6: Estimated Waste and Recycling Volumes – Retail Stage 2	15
Table 7: Estimated Waste and Recycling Volumes – Commercial Stage 1	16
Table 8: Estimated Waste and Recycling Volumes – Commercial Stage 2	16
Table 9: Stakeholder Roles and Responsibilities	19
Table 10: Operational Waste Streams	20
Table 11: Equipment Summary.....	23
Table 12: Waste Room Areas – Stage 1	24
Table 13: Waste Room Areas – Stage 2	25
Table 14: Waste Room Requirements.....	27

GLOSSARY OF ABBREVIATIONS AND TERMS

TERM	DESCRIPTION
<i>Bin-Carting Route</i>	Travel path for transporting bins from their allocated storage location to the nominated collection point
<i>Bin Lifter</i>	A device used to mechanically lift bins for the purpose of emptying them into larger bins and/or compactors.
<i>Bin Mover</i>	Either a handheld device (commonly referred to as a bin tug) or a ride-on device (typically a tractor or Class C vehicle with an attached bin trailer) used to facilitate the movement of bins across long distances or up ramps
<i>Bulky Waste</i>	Recycling items that are too large to be deposited into bins, including furniture, whitegoods, electronics and mattresses
<i>Chute</i>	A vertical pipe passing from floor to floor of a building with openings at each level for the disposal of general waste, recycling or FOGO.
<i>Chute Discharge</i>	The termination point of a chute whereby the chute offsets deposited general waste, recycling or FOGO into bins
<i>Chute Discharge Room</i>	A room enclosing the termination point of the chute/s, including bins and volume handling equipment that is accessible only to the building caretaker
<i>Collection Area/Point</i>	Designated area or point where bins are loaded onto the collection vehicle for servicing
<i>Communal Bin Room</i>	A central, shared bin room accessible to all residents or staff to dispose of their waste stream
<i>DA</i>	Development Application
<i>DCP</i>	Development Control Plan
<i>EPA</i>	Environment Protect Authority
<i>FOGO</i>	Food Organics and Garden Organics
<i>General Waste</i>	All non-recyclable and non-hazardous waste that is sent to landfill
<i>HRV</i>	Heavy Rigid Vehicle
<i>L</i>	Litre
<i>LEP</i>	Local Environmental Plan
<i>Mixed Use Development</i>	A development comprising a combination of both residential and commercial units or two or more different land uses within the one development.
<i>Mobile Bins</i>	Containers with a capacity up to and including 1100L designed to be collected by a rear-loading vehicle
<i>Multi-unit Residential Development</i>	Also known as MUD's, residential flat buildings, or apartment blocks, this is a residential development with multiple units that typically share facilities and services such as bins and collections.

<i>Onsite Collection</i>	A collection arrangement whereby all bins are serviced by a collection vehicle within the property boundary, either in the building's basement or at grade and off-street.
<i>Owners Corporation</i>	An organisation or group of persons that is identified by a particular name and that acts, or may act, as an entity
<i>Recycling</i>	Waste stream that combines all recycling, including comingled recycling, paper/cardboard and metals.
<i>Source Separation Receptacles</i>	Communal containers used throughout the development for the day-to-day disposal of different waste streams
<i>Volume Handling Equipment</i>	Equipment which comes in the form of either carousel or linear tracks positioned at the base of the chute/s to mechanically replace full bins with empty bins
<i>Waste Stream</i>	A classification used to describe waste of a particular type (eg. food waste stream)
<i>WHS</i>	Workplace Health and Safety

1.0 ACKNOWLEDGEMENT OF COUNTRY

Elephants Foot Consulting (EFC) acknowledges that every project we work on takes place on First Peoples land. We recognise Aboriginal and Torres Strait Islander People as Traditional Custodians of this land. We pay respect to ancestors and Elders, past and present.

2.0 INTRODUCTION

Elephants Foot Consulting (EFC) has been engaged to prepare the following Operational Waste Management Plan (OWMP) to satisfy the conditions of a State Significant Development Application (SSDA) located within The Hills Shire Council requires for the mixed-use development. The site is situated at 93-107 Cecil Ave & 9-10 Roger Ave, Castle Hill NSW 2154.

Robust waste management strategies are required for new developments to support the design and sustainable performance of the building. It is EFC's belief that a successful waste management strategy contains three key objectives:

- i. **Promote responsible source separation*** to reduce the amount of waste that goes to landfill by implementing convenient and efficient waste management systems.
- ii. **Ensure adequate waste and recycling provisions and procedures*** are established that will cater for potential changes during the operational phase of the development.
- iii. **Comply*** with all relevant council codes, policies, and guidelines.

To achieve these objectives, this OWMP identifies and details the following components:

- Waste streams expected to be generated onsite and anticipated volumes;
- Suitable bin sizes and quantities;
- Waste and recycling disposal procedures;
- Bin room size estimations and equipment recommendations; and
- Waste collection strategies, locations and frequencies.

It is vital that this OWMP is integrated into the overall management of the building and is clearly communicated to all relevant stakeholders.

2.1 SCOPE OF REPORT

This OWMP only applies to the **operational** phase of the proposed development; therefore, the requirements outlined in this OWMP must be implemented during the operational phase of the site and may be subject to review upon further expansion of, and/or changes to the development.

The waste management of the **construction** and **demolition** phases of the development are not addressed in this report. A construction and demolition WMP will need to be provided separately.

2.2 REPORT CONDITIONS

The purpose of this report is to document an OWMP as part of an SSDA, which is supplied by EFC with the following limitations:

- Drawings, estimates and information contained in this OWMP have been prepared by analysing the information, plans and documents supplied by the client and third parties including Council and other government agencies. The assumptions based on the information contained in the OWMP is outside the control of EFC,
- The figures presented in the report are an estimate only – the actual amount of waste generated will be dependent on the occupancy rate of the building/s and waste generation intensity as well as the building management’s approach to educating residents and tenants regarding waste management operations and responsibilities,
- The building manager will adjust waste management operations as required based on actual waste volumes (e.g. if waste is greater than estimated) and increase the number of bins and collections accordingly,
- The report will not be used to determine or forecast operational costs or prepare any feasibility study or to document any safety or operational procedures,
- The report has been prepared with all due care; however no assurance is made that the OWMP reflects the actual outcome of the proposed waste facilities, services, and operations, and EFC will not be liable for plans or results that are not suitable for purpose due to incorrect or unsuitable information or otherwise,
- EFC offer no warranty or representation of accuracy or reliability of the OWMP unless specifically stated,
- Any manual handling equipment recommended in this OWMP should be provided at the recommendation of the appropriate equipment provider who will assess the correct equipment for supply,
- Design of waste management chute equipment and systems must be approved by the supplier,
- EFC cannot be held accountable for late changes to the design after the OWMP has been submitted to Council,
- EFC will provide specifications and recommendations on bin access and travel paths within the OWMP, however it is the architect’s responsibility to ensure the architectural drawings meet these provisions,
- EFC are not required to provide information on collection vehicle swept paths, head heights, internal manoeuvring or loading requirements. It is assumed this information will be provided by a traffic consultant,
- Council are subject to changing waste and recycling policies and requirements at their own discretion.
- This OWMP is only finalised once the draft watermark has been removed. If the draft watermark is present, the information in the OWMP is not confirmed.

3.0 LEGISLATION & GUIDANCE

Waste management and resource recovery regulation in Australia is administered by the Australian Constitution, Commonwealth laws, and international agreements. State and territory governments maintain primary responsibility for controlling development and regulating waste. The following legislation has been enacted in New South Wales, and provides the lawful underpinnings of this OWMP.

- NSW Environmental Planning & Assessment Act 1979
- NSW Protection of the Environment Operations Act 1997
- NSW Waste Avoidance & Resource Recovery Act 2001

This report has been prepared with accordance to the following:

- The Hills Development Control Plan 2012
- The Hills Local Environmental Plan 2019

The primary purpose of a Development Control Plan (DCP) is to guide the planning process according to the aims of the corresponding local environmental plan (LEP). The DCP must be read in conjunction with the provisions of the relevant LEP.

Information provided in this OWMP comes from a wide range of waste management guidance at the local, state, and federal levels. The primary sources of guidance include:

- The Hills Development Control Plan (2012) Part B Section 5 – Residential Flat Building
- The Hills Development Control Plan (2012) Part B Section 6 – Business
- NSW Better Practice Guide For Resource Recovery In Residential Developments 2019
- NSW Better Practice Guidelines for Waste Management and Recycling in Commercial and Industrial Facilities 2012
- NSW Waste Avoidance and Resource Recovery (WARR) Strategy 2014-2021
- NSW Waste Classification Guidelines 2014
- Australia’s National Waste Policy 2018

4.0 SECRETARY ENVIRONMENTAL ASSESSMENT REQUIREMENTS (SEARS)

Below displays the SEARs planning requirements, and the sections of this report where each point is applicable to.

DA Condition 18	Elephant Foots Response
Identify, quality and classify the likely waste systems to be generated during construction and operation.	<i>During Operation: This can be viewed in Sections 7.2, 7.6 and 8.2.</i> <i>The construction material can be provided as a separate document.</i>
Provide the measures to be implemented to manage, reuse, recycle and safely dispose of this waste.	<i>Can be viewed in sections 7.4, 7.6 and 8.4.</i>
Identify the appropriate servicing arrangements for the site.	<i>Can be viewed in Section 7.5, 7.6 and 8.5.</i>
If buildings are proposed to be demolished or altered, provide a hazardous materials survey.	<i>This will be provided by others.</i>

5.0 RESPONSE TO AUTHORITY

Below displays the comments raised by the DPFI following the preliminary assessment of the OWMP.

DPFI Comment	Elephant Foots Response
Confirm why Council's request to combine FOGO and residential waste storage rooms has not been implemented.	A separate FOGO bin room is proposed because residents are not permitted to access the main bin storage room due to equipment requiring sign-off and contractor-only access during disposal times. Separating the FOGO room also supports improved odour control, hygiene and sanitation standards, and more effective management of putrescible spills, wash-down water volumes and pest control. Residents will continue to have access to a dual-chute system for general waste and recycling, along with a dedicated bulky-waste room for disposal regardless, and there is no operational requirement for FOGO to be combined with the main bin storage room. The proposed FOGO rooms also provide direct access for collection, meaning co-location with the main bin room is unnecessary.
Confirm whether ceiling mounted waste compaction units are provided at the garbage chute termination points.	No compaction of any resource stream is proposed within this current revision of the report for either the residential or non-residential component.

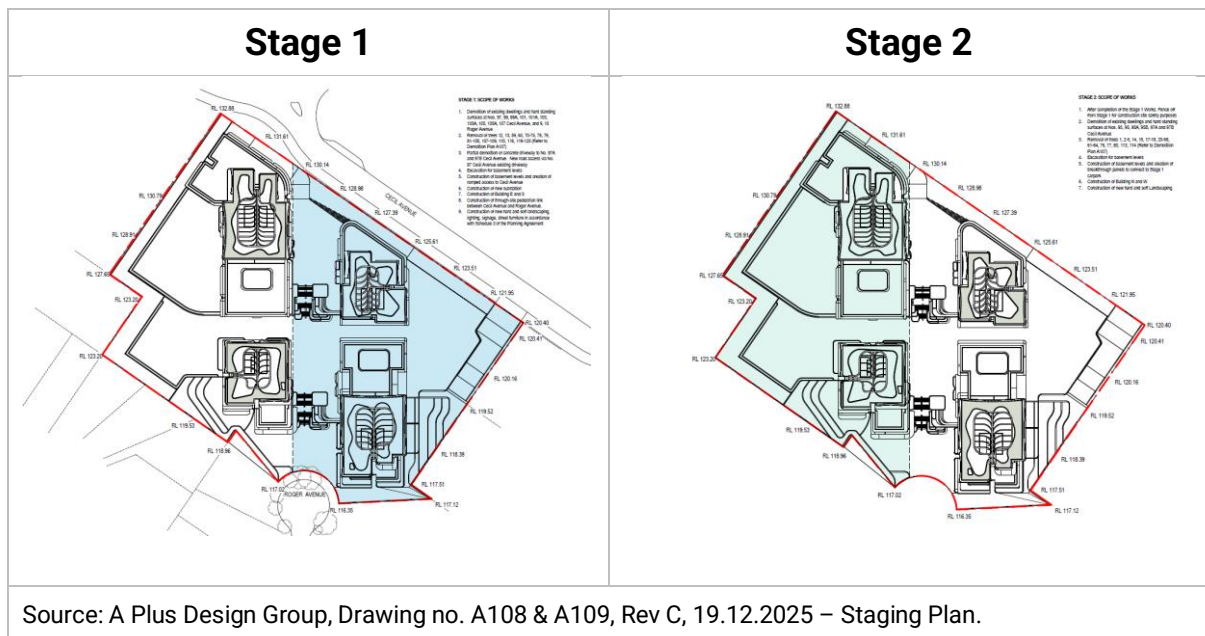
6.0 DEVELOPMENT OVERVIEW

The proposed development falls under the LGA of The Hills Shire Council, and consists of 4 buildings incorporating the following breakdown:

- 610 residential units in total, separated into 2 stages:
 - ❖ **Stage 1**
 - Building E: 116 units
 - Building S: 145 units
 - Core 1: 16 units
 - Core 2: 129 units
 - Retail with approximately 539m² in total
 - Commercial with approximately 758m² in total
 - ❖ **Stage 2**
 - Building N: 241 units
 - Core 1: 214 units
 - Core 2: 27 units
 - Building W: 108 units
 - Retail with approximately 593m² in total
 - Commercial with approximately 1899m² in total

All figures and calculations are based on area schedules as advised by our client and shown on architectural drawings. The staging can be viewed in the figure below:

Figure 1: Staging Plan.



6.1 SITE LOCATION

The site is located at 93-107 Cecil Ave & 9-10 Roger Ave, Castle Hill NSW 2154, as shown in Figure.1 (boundaries are indicative only). The site has frontages to Cecil Avenue and Roger Avenue, with vehicle access via Cecil Avenue.

Figure 2: Site Location



Source: Google Maps 2024

7.0 RESIDENTIAL WASTE MANAGEMENT

The following section outlines best practice waste management for the residential component of the development, including waste stream generation estimates and disposal and collection procedures.

7.1 RESIDENTIAL WASTE GENERATION ESTIMATES

The 'Hills Shire Development Control Plan 2012', and the Councils 'Pre-lodgement Meeting Notes, 49/2025/PRE' has been referenced to calculate the total number of general waste and recycling bins while council guidance has been referenced to calculate the total number of FOGO bins.

Calculations are based on generic general waste, recycling and Food Organics and Garden Organics (FOGO) rates. Actual volumes of general waste, recycling and FOGO generated in operation may differ according to the residents' actual waste management practices.

The following tables show the estimated volume (L) of general waste, recycling and FOGO generated by the residential component of the development.

Table 1: Stage 1 Estimated Waste, Recycling and FOGO Volumes – Residential

Building/ Core	# Units	General Waste Generation Rate (L/unit/week)	Generated General Waste (L/week)	Recycling Generation Rate (L/unit/week)	Generated Recycling (L/week)	FOGO Waste Generation Rate (L/unit/week)	Generated FOGO Waste (L/week)
E	116	120	13920	120	13920	25	2900
S (Core 1)	16	120	1920	120	1920	25	400
S (Core 2)	129	120	15480	120	15480	25	3225
TOTAL	261		31320		31320		6525
Bins & Collections	General Waste Bin Size (L)		1100	Recycling Bin Size (L)	1100	FOGO Waste Bin Size (L)	240
	General Waste Collections per Week		2	Recycling Collections per Week	2	FOGO Waste Collections per Week	2
	Total General Waste Bins Required		16	Total Recycling Bins Required	16	Total FOGO Waste Bins Required	15
Bins per Building/ Core	Building/ Core		# Bins	Building/ Core	# Bins	Building/ Core	# Bins
	E		7	E	7	E	7
	S (Core 1)		1	S (Core 1)	1	S (Core 1)	1
	S (Core 2)		8	S (Core 2)	8	S (Core 2)	7

Note: Compaction is not proposed.

Table 2: Stage 2 Estimated Waste, Recycling and FOGO Volumes – Residential

Building/ Core	# Units	General Waste Generation Rate (L/unit/week)	Generated General Waste (L/week)	Recycling Generation Rate (L/unit/week)	Generated Recycling (L/week)	FOGO Waste Generation Rate (L/unit/week)	Generated FOGO Waste (L/week)
N (Core 1)	214	120	25680	120	25680	25	5350
N (Core 2)	27	120	3240	120	3240	25	675
W	108	120	12960	120	12960	25	2700
TOTAL	349		41880		41880		8725
Bins & Collections	General Waste Bin Size (L)		1100	Recycling Bin Size (L)	1100	FOGO Waste Bin Size (L)	240
	General Waste Collections per Week		2	Recycling Collections per Week	2	FOGO Waste Collections per Week	2
	Total General Waste Bins Required		20	Total Recycling Bins Required	20	Total FOGO Waste Bins Required	20
Bins per Building/ Core	Building/ Core	# Bins		Building/ Core	# Bins	Building/ Core	# Bins
	N (Core 1)		12	N (Core 1)		N (Core 1)	12
	N (Core 2)		2	N (Core 2)		N (Core 2)	2
	W		6	W		W	6

7.2 RESIDENTIAL BIN SUMMARY

Based on the estimated volumes of general waste, recycling and FOGO generated by the residential component of this development, the recommended bin quantities and collection frequencies are as follows:

STAGE 1: BUILDINGS E & S

General Waste: 16 x 1100L bins collected **2 x weekly.**
Recycling: 16 x 1100L bins collected **2 x weekly.**
FOGO: 15 x 240L bins collected **2 x weekly.**

STAGE 2: BUILDINGS N & W

General Waste: 20 x 1100L bins collected **2 x weekly.**
Recycling: 20 x 1100L bins collected **2 x weekly.**
FOGO: 20 x 240L bins collected **2 x weekly.**

During operation, it is the responsibility of the building manager to monitor the number of bins required for the residential component of the development. General waste, recycling and FOGO volumes may change according to residents' attitudes to waste disposal, building occupancy levels or the development's management.

Any requirements for adjusting the capacity of the waste facilities may be achieved by changing the number of bins, the bin sizes or collection frequencies. Building management will be required to negotiate any changes to bins or collections with the collection service provider.

7.3 RESIDENTIAL CHUTE DISCHARGE EQUIPMENT SUMMARY

Based on the estimated general waste volumes generated by each building/core, the following equipment is recommended:

Table 3: Chute Discharge Equipment Summary – General Waste

General Waste Volume Handling Equipment			
Building/ Core	Generated General Waste (L/week)	# 1100L Bins Required for 1 days' Capacity	Recommended Chute Discharge Equipment
E	13920	1.81	3-Bin Linear System
S (Core 1)	1920	0.25	Single Bin
S (Core 2)	15480	2.01	3-Bin Linear System
N (Core 1)	25680	3.34	3-Bin Linear System
N (Core 2)	3240	0.42	Single Bin
W	12960	1.68	3-Bin Linear System

Table 4: Chute Discharge Equipment Summary - Recycling

Recycling Volume Handling Equipment			
Building/ Core	Generated Recycling (L/week)	# 1100L Bins Required for 1 days' Capacity	Recommended Chute Discharge Equipment
E	13920	1.81	3-Bin Linear System
S (Core 1)	1920	0.25	Single Bin
S (Core 2)	15480	2.01	3-Bin Linear System
N (Core 1)	25680	3.34	3-Bin Linear System
N (Core 2)	3240	0.42	Single Bin
W	12960	1.68	3-Bin Linear System

The above is a recommendation only and equivalent volume handling equipment may be used subject to equipment supplier's recommendation/review.

7.4 RESIDENTIAL WASTE DISPOSAL PROCEDURES

All residents will have access to a storage area within their own unit capable of holding separate receptacles for general waste, recycling and FOGO. This is typically located within kitchen areas beneath the workbench. This space should be sized to accommodate 40L receptacles (minimum) to account for 2 days' worth of general waste, recycling and 20L for FOGO storage.

7.4.1 RESIDENTIAL GENERAL WASTE AND RECYCLING DISPOSAL PROCEDURES

Dual chute systems comprising of a single general waste chute and single recycling chute will be installed in each building core with access provided to all residents on each residential level. Space for a separate 240L bin minimum will be provided in a compartment adjacent to the chutes for the disposal of bulky recycling items that cannot be disposed in the chute.

Residents will be responsible for transporting their general waste and recycling to the bin room on each level and placing their general waste into the general waste chute and their recycling into the recycling chute. Residents will wrap or bag their general waste before placing in the chute. Bagged waste should not exceed 3kg in weight, or 35cm x 35cm x 35cm. Residents will be responsible for loosely placing their recycling into the recycling chute. Recycling should be clean and must not be bagged as soft plastics contaminate recycling.

Cardboard boxes or large containers should not be disposed of in the recycling chute. These items should be disposed of directly into the 240L recycling bins placed within the bin rooms on each level.

Both the general waste and recycling will discharge into volume management equipment to assist with the automatic rotation of the bins. The building manager will monitor bin capacities under the dual chute systems and exchange full bins with empty bins on the track systems when required.

Recycling bins on each level will also be monitored by the building caretaker and full bins will be transferred down to the bin holding room where they are to be decanted into 1100L collection bins via the aid of a bin lifter.

7.4.2 RESIDENTIAL FOGO DISPOSAL PROCEDURES

The majority of organics waste generated from multi-unit residential developments comprises of food waste as opposed to garden waste. As such, calculations and management recommendations provided in this report considers that FOGO bins will primarily comprise of food organics.

The residents of each unit will be provided with a kitchen caddy for the separation of FOGO. Food organics must be contained in accordance with The Hills Shire Council's FOGO collection service procedures (for example a compostable liner). Any clippings from residential units can also be disposed of with the FOGO.

Each stage will feature a residential communal FOGO bin room containing 240L bins for FOGO. Residents will be responsible for transporting their FOGO waste to their respective communal FOGO bin room and placing it into the bins.

Building management is responsible for ensuring that the communal FOGO bin rooms and FOGO bins are washed down frequently to ensure that hygiene and odour is managed.

7.5 RESIDENTIAL BIN COLLECTION PROCEDURES

Stages 1 and 2 will have their own allocated loading bay for resource collections. Council will be engaged to collect the residential general waste, recycling and FOGO in accordance with Council's collection schedule. This report assumes that all resource streams will be collected twice weekly.

Prior to collections, the Building Manager/Caretaker will be responsible for transporting the bins from Chute Discharge Rooms to the designated bin holding rooms on the lower ground level. The Building Manager/Caretaker is also responsible for ensuring that the bins are adequately arranged for an efficient collection and that each loading area is clear of any vehicles or obstructions.

On the day of collection, a Council collection vehicle will enter the site from Cecil Avenue and park in each loading bay in turn. The Building Manager/Caretaker will be responsible for ensuring that the collection staff have access to each residential bin holding rooms. At each loading bay, the collection staff will exit the vehicle, collect the bins from the holding rooms, and return the empty bins once serviced.

Upon completion of servicing, the collection vehicle will exit the site onto Cecil Avenue in a forward direction. The Building Manager/Caretaker is responsible for returning the bins to their operational location to resume use.

All access and clearances to the collection point must be able to accommodate a 12.5 meter-long HRV per AS2890.2-2002. This applies to all developments over 200 units and as referenced in the '*Pre-lodgement Meeting Notes, 49/2025/PRE*'.

7.6 OTHER RESIDENTIAL WASTE MANAGEMENT CONSIDERATIONS

The following sections outline other waste management considerations for the residential components.

7.6.1 RESIDENTIAL COMMON AREAS

Residential common areas will be supplied with suitably branded source separation receptacles where considered appropriate. Receptacles should be placed in convenient locations which are accessible to all residents. The building manager will monitor the capacity of these receptacles and empty the contents into the central collection bins as required.

7.6.2 LANDSCAPED AREAS AND GARDEN ORGANICS

Garden organics generated from surrounding landscaped areas and indoor foliage typically consists of lawn clippings, cuttings, leaves and branches.

Garden organics generated from surrounding landscaped areas will be managed and removed from the site by the designated landscaping contractors as they carry out scheduled landscaping maintenance works.

Garden organics generated from within residential units will be managed by the residents and should be disposed of into the FOGO bins.

7.6.3 RESIDENTIAL BULKY WASTE PROCEDURES

Areas for stage 1 and stage 2 will be made available for the storage of discarded residential bulky waste items (e.g. whitegoods, furniture, etc.). This room should be located within close proximity of the collection point and must have a minimum doorway width of 2m to facilitate the movement of large items in and out of the room.

The Hills Shire Council requires that size of the Bulky Waste Room provided is proportional to the number of units in the building at a rate of 4m² per 50 units. Based on this rate, the bulky waste room required for each stage is as follows:

Stage 1 - Bulky Waste Room Size

$$4 \left(\frac{261}{50} \right) = 21 \text{ (rounded up)}$$

Bulky waste storage area: minimum 21m²

Stage 2 & 3 - Bulky Waste Room Size

$$4 \left(\frac{349}{50} \right) = 28 \text{ (rounded up)}$$

Bulky waste storage area: minimum 28m²

Residents will need to liaise with building management regarding the transportation of bulky items and the availability of their respective bulky waste room. It is the caretaker's responsibility to arrange collection dates with Council and coordinate these times with the residents.

On the day of bulky waste collection, a Council collection vehicle will enter the site from Cecil Avenue and park in the respective loading bay. Collection staff will collect the bulky waste items from the bulky waste room. Once bulky items have been loaded onto the vehicle, the collection vehicle will exit the site onto Cecil Avenue in a forward direction.

8.0 COMMERCIAL AND RETAIL WASTE MANAGEMENT

The following section outlines best practice waste management for the commercial and retail components of the development, including waste generation estimates and waste disposal and collection procedures.

8.1 COMMERCIAL AND RETAIL WASTE GENERATION ESTIMATES

The NSW EPA's *Better Practice Guide for Resource Recovery in Residential Developments* (2019) has been referenced to calculate the total number of bins required for the anticipated tenants. Calculations are based on generic generation rates. Actual volumes of waste and recycling may differ in operation according to the tenants' actual waste management practices. The waste and recycling generation rates from the NSW EPA's *Better Practice Guide for Resource Recovery in Residential Developments* (2019) have been adapted to reflect litres per 100m² per day.

The following table shows the estimated volume (L) of general waste and recycling that will be generated by the commercial and retail tenants. It is assumed that retail tenancies will share bins, bin storage facilities and collections.

The following estimates are based on a five-day operating week for the commercial tenancies (offices) and a seven-day operating week for the rest.

Table 5: Estimated Waste and Recycling Volumes – Retail Stage 1

Stage	Tenancy Type	Floor Area (m ²)	General Waste Generation Rate (L/100m ² /day)	Generated General Waste (L/week)	Recycling Generation Rate (L/100m ² /day)	Generated Recycling (L/week)
1	Retail	539	150	5660	100	3773
TOTAL		539		5660		3773
Bins & Collections			General Waste Bin Size (L)	1100	Recycling Bin Size (L)	1100
			General Waste Bins per Day	0.7	Recycling Bins per Day	0.5
			General Waste Collections per Week	3	Recycling Collections per Week	3
			Total General Waste Bins Required	2	Total Recycling Bins Required	2

Table 6: Estimated Waste and Recycling Volumes – Retail Stage 2

Stage	Tenancy Type	Floor Area (m ²)	General Waste Generation Rate (L/100m ² /day)	Generated General Waste (L/week)	Recycling Generation Rate (L/100m ² /day)	Generated Recycling (L/week)
2	Retail	593	150	6227	100	4151
TOTAL		593		6227		4151
Bins & Collections			General Waste Bin Size (L)	1100	Recycling Bin Size (L)	1100
			General Waste Bins per Day	0.8	Recycling Bins per Day	0.5
			General Waste Collections per Week	3	Recycling Collections per Week	3
			Total General Waste Bins Required	2	Total Recycling Bins Required	2

Table 7: Estimated Waste and Recycling Volumes – Commercial Stage 1

Stage	Tenancy Type	Floor Area (m ²)	General Waste Generation Rate (L/100m ² /day)	Generated General Waste (L/week)	Recycling Generation Rate (L/100m ² /day)	Generated Recycling (L/week)
1	Commercial	758	10	379	15	569
TOTAL		758		379		569
Bins & Collections			General Waste Bin Size (L)	1100	Recycling Bin Size (L)	1100
			General Waste Bins per Day	0.0	Recycling Bins per Day	0.1
			General Waste Collections per Week	1	Recycling Collections per Week	1
			Total General Waste Bins Required	1	Total Recycling Bins Required	1

Table 8: Estimated Waste and Recycling Volumes – Commercial Stage 2

Stage	Tenancy Type	Floor Area (m ²)	General Waste Generation Rate (L/100m ² /day)	Generated General Waste (L/week)	Recycling Generation Rate (L/100m ² /day)	Generated Recycling (L/week)
2	Commercial	1899	10	950	15	1424
TOTAL		1899		950		1424
Bins & Collections			General Waste Bin Size (L)	1100	Recycling Bin Size (L)	1100
			General Waste Bins per Day	0.1	Recycling Bins per Day	0.2
			General Waste Collections per Week	1	Recycling Collections per Week	1
			Total General Waste Bins Required	1	Total Recycling Bins Required	2

8.2 COMMERCIAL AND RETAIL BIN SUMMARY

Based on the estimated waste and recycling volumes generated the commercial and retail tenancies, the recommended bin quantities and collection frequencies are as follows:

8.2.1 RETAIL STAGE 1 AND 2

General Waste: 4 x 1100L bins collected **3 x weekly.**
Recycling: 4 x 1100L bins collected **3 x weekly.**

8.2.2 COMMERCIAL STAGE 1 AND 2

General Waste: 2 x 1100L bins collected **weekly.**
Recycling: 3 x 1100L bins collected **weekly.**

Bin sizes, quantities, and/or collection frequencies may be modified by the building manager once the proposed development is operational. Building management will be required to negotiate any changes to bins or collections with the collection service provider. Seasonal peak periods should also be considered. It is assumed the same collection provider will be proposed between retail and commercial to minimise traffic during collections.

8.3 COMMERCIAL AND RETAIL WASTE DISPOSAL PROCEDURES

All tenancies will be responsible for their own general waste and recycling disposal procedures within their own vicinity. On completion of each trading day or as required, nominated staff or contracted cleaners will transport all general waste and recycling to the commercial/retail bin room and place into the appropriate collection bins.

8.4 COMMERCIAL AND RETAIL WASTE COLLECTION PROCEDURES

A private waste contractor will be engaged to service the retail general waste and recycling bins as per an agreed collection schedule. This report assumes the collection frequencies listed in section 7.2.1 and 7.2.2.

On the day of service, a private waste collection vehicle will enter the site from Cecil Avenue and park in the Stage 1 & 2 loading bay. The building caretaker will provide the driver with access to the commercial/retail waste room. Once the bins are serviced, the collection vehicle will exit the site onto Cecil Avenue in a forward direction.

8.5 OTHER COMMERCIAL AND RETAIL WASTE MANAGEMENT CONSIDERATIONS

Based on the types of tenancies anticipated for this development, the following waste management practices are recommended.

8.5.1 WASHROOM FACILITIES

Washroom facilities should be supplied with collection bins for paper towels (if used). Sanitary bins for female restroom facilities must also be arranged with an appropriate contractor.

8.5.2 PRINTING & PHOTOCOPYING ROOMS

It is recommended that rooms designed for printing or photocopying be provided with an area for the interim storage of paper receptacles, as well as separate receptacles for used toner and/or printer cartridges for recycling. The cleaners or nominated staff are responsible for monitoring these receptacles and ensuring that items are collected and recycled by an appropriate contractor.

8.5.3 FOOD WASTE

Any food preparation area, including kitchens and office tea rooms will be provided with dedicated source separation bins including a general waste bin, and recycling bin. Cleaners or nominated staff will be responsible for monitoring these bins and emptying them as required.

8.5.4 LIQUID WASTE

Liquid wastes such as cleaning products, chemicals, paints, solvents, and motor and cooking oil will be stored in a secure room and enclosed by a low wall intended to contain any liquid spillage or inundation to other areas. Liquid waste will be drained to a grease trap, in accordance with legislation and the requirements of State government authorities and agencies. Further information can be provided by the Services Consultant.

8.5.5 PROBLEM WASTE

The building manager is responsible for making arrangements for the disposal and recycling of problem waste streams with an appropriate contractor. Problem wastes cannot be placed in the general waste stream as they can have adverse impacts to human health and the

environment if disposed of in landfill. Retail and commercial tenants must liaise with the building manager when disposing of problem waste streams.

Problem waste streams include:

- Chemical Waste
- Liquid wastes
- Toner cartridges
- Lightbulbs
- eWaste
- Batteries

9.0 STAKEHOLDER ROLES & RESPONSIBILITIES

The following table outlines the primary roles and responsibilities of the respective stakeholders:

Table 9: Stakeholder Roles and Responsibilities

Roles	Responsibilities
Strata, Body Corporate or Management	<ul style="list-style-type: none"> • Co-ordinate the waste strategy within the site. • Ensure all waste service providers submit monthly reports on all equipment movements and waste quantities/weights. • Organise internal waste audits/visual assessments on a regular basis. • Purchase any on-going waste management equipment or maintenance of equipment once building is operational; and • Manage any non-compliances/complaints reported through waste audits.
Building Manager or Waste Caretaker	<ul style="list-style-type: none"> • Co-ordinate general waste, recycling and FOGO collections • Clean and transport bins as required. • Maintain and clean chute doors on each level. • Organise replacement or maintenance requirements for bins. • Organise, maintain and clean bin storage areas. • Organise bulky waste collections when required. • Investigate and ensure prompt clean-up of illegally dumped waste materials. • Prevent storm water pollution by taking necessary precautions (secure bin rooms, prevent overfilling of bins). • Abide by all relevant WH&S legislation, regulations, and guidelines. • Provide staff/contractors with equipment manuals, training, health and safety procedures, risk assessments, and PPE to control hazards associated with all waste management. • Assess any manual handling risks and prepare a manual handling control plan for bin transfers. • Ensure site safety for residents, children, visitors, staff and contractors; and • Ensure effective signage, communication and education is provided to occupants, tenants, maintenance staff, and cleaning contractors.
Residents	<ul style="list-style-type: none"> • Dispose of all general waste, recycling and FOGO in the allocated chutes and/or bins provided. • Ensure adequate separation of general waste, recycling and FOGO; and • Comply with the provisions of Council and the OWMP.
Retail/Commercial Tenants	<ul style="list-style-type: none"> • Management co-ordinates own private contractor collections. • Manage general waste and recycling within their tenancy during daily operations. • Correctly separate general waste and recycling streams. • Flatten cardboard within the recycling bin. • If required, arrange for storing used and unused cooking oil in a bunded area, • Organise grease interceptor trap servicing, and • Ensure the suitable storage for chemicals, pesticides and cleaning products waste back of house.
Waste Collection Contractor	<ul style="list-style-type: none"> • Provide a reliable and appropriate bin collection service. • Provide feedback to building managers/residents regarding contamination of recyclables; and • Work with building managers to customise waste systems where possible.
Gardening/Landscaping Contractor	<ul style="list-style-type: none"> • Remove all garden organics generated during gardening maintenance activities for recycling at an offsite location.
Developer	<ul style="list-style-type: none"> • Purchase all equipment required to implement this OWMP prior to the occupation of the building to be provided to the Strata or Body Corporate.

10.0 SOURCE SEPARATION

Better practice waste management includes the avoidance, reuse, and recovery of unwanted items, which can be achieved through source separation. The table below outlines what is typically included in various waste streams and how they can be managed. Refer to your local council for a list of accepted materials. Planet Ark can be accessed online to find other facilities that recover unwanted items.

Table 10: Operational Waste Streams

Waste Stream	Description	Typical Destination	Waste Stream Management
General Waste	The remaining portion of the waste stream that is not recovered for re-use, processing, or recycling. May include soft plastics, food scraps, polystyrene, etc.	Landfill	Waste should be bagged before placing in chutes, or in designated waste bins.
Recycling	A mixture of items that are commonly recycled usually segregated through a MRF. Typically include food and beverage containers (e.g. aluminium, glass, steel, hard plastics, cartons). Also included cardboard and paper products.	Resource Recovery Centre	Recycling must not be bagged, and instead should be placed loosely in the designated recycling bins. Bulky cardboard must not be placed in any chute. Cardboard should be flattened before placing in the designated recycling bin.
FOGO	FOGO consists of unwanted or uneaten kitchen scraps that are easily compostable/biodegradable (e.g. vegetable peels, fruit rinds, coffee grounds) and garden organics including lawn clippings, leaves, pruning's and branches.	Composting Facility	FOGO should be bagged in compostable liners when deposited into the chute/s or bins and will be collected by Council.
Secure Documents	Secure documents are printed paper materials that contain sensitive information.	Recycling Facility	Secure documents are placed in allocated secure document bins. Private contractor removes bins from site.
Electronic Waste	Discarded e-waste, electronic components and materials such as computers, mobile phones, keyboards, etc.	Resource Recovery Centre	Building manager arranges collection for e-waste recycling as needed by residents. Commercial tenants arrange for recycling of their own e-waste.
Bulky Waste Items	Items that are too large to place into general rubbish collection. This includes disused and/or broken furniture, mattresses, white goods, etc.	Resource Recovery Centre or Landfill	Residents liaise with building manager to store in Bulky Goods Room. Building manager arranges with Council for removal. Commercial tenants are responsible for removal of their bulky items.
Sanitary Waste	Feminine hygiene waste generated from female bathrooms.	Incineration or Landfill	Sanitary bins are serviced by sanitary waste contractor.
Other	Other recyclable items that require special recovery may include ink cartridges, batteries, chemical waste, fluorescent tubes, etc.	Resource Recovery Facility	Building manager arranges collection by appropriate recycling services when required.

11.0 EDUCATION

Educational material encouraging correct separation of general waste, recycling and FOGO must be provided to each resident and commercial/retail tenant. This should include the correct disposal process for bulky waste such as old furniture, large discarded items, and other materials including electronic and chemical wastes. It is recommended that the building caretaker provide information in multiple languages to support correct behaviours, and to minimise the possibility of chute blockages and contamination in communal bins.

a regular basis to encourage behaviour change and account for transient building personnel such as new residents, tenants, or cleaning staff. It is also recommended that the owners' corporation website contain information for residents' referral regarding use of the chute. Education and communication must be provided consistently: Education should include the following:

- Directions on using the chute doors;
- Descriptions of items accepted in the general waste, recycling and FOGO streams (refer to Council guidance);
- How to dispose of bulky waste and any other items that are not general waste, recycling or FOGO (refer to Council guidance);
- Residents' obligations to health and safety as well as building management; and
- How to prevent damage or blockages to the chute (example below).

11.1 SIGNAGE

Signage and education are essential components to support best practice waste management including resource recovery, source separation, and diversion of waste from landfill. Signage should include:

- Clear and correctly labelled bins,
- Instructions for separating and disposing of waste items. Different languages should be considered,
- Locations of, and directions to, the waste storage areas with directional signs, arrows, or lines,
- The identification of all hazards or potential dangers associated with the waste facilities, and
- Emergency contact information should there be issues with the waste systems or services in the building.

The building manager is responsible for waste room signage including safety signage. Appropriate signage must be prominently displayed on doors, walls and above all bins, clearly stating what type of waste or recyclables is to be placed in each bin.

All chute doors on all residential levels will be labelled with signs directing chute operations and use of chute door.

All signage should conform to the relevant Australian Standards.

12.0 POLLUTION PREVENTION

Building management shall be responsible for the following to minimise dispersion of site litter and prevent stormwater pollution to avoid impact to the environment and local amenity:

- Promoting adequate waste disposal into the bins
- Securing all bin rooms (whilst affording access to staff/contractors)
- Prevent overfilling of bins, keep all bin lids closed and bungs leak-free
- Taking action to prevent dumping or unauthorised use of waste areas
- Require collection contractor/s to clean up any spillage when clearing bins

13.0 BIN WASHING

The bins will be cleaned by the building manager periodically to ensure hygiene and minimise odour. Bin washing can occur within the bin rooms, using the room clean down facilities (i.e tap connection and drain). Alternatively, a specialist bin washing contractor can be engaged to clean the bins to an agreed schedule. The specialist bin contractor would collect the bins from the bin holding area and clean the bins with their specialised vehicle.

14.0 BIN MOVING PATHS

The building manager is responsible for the transportation of bins from their designated operational locations to the collection area, returning them once emptied to resume operational use.

Any movement of bins should minimise manual handling where possible, as bins become heavy when full. The building manager must assess manual handling risks and provide any relevant documentation to key personal. The routes along the bin moving path should;

- Allow for a continuous route that is wholly within the property boundary.
- Be free from obstruction and obstacles such as steps and kerbs.
- Be constructed of solid materials with a non-slip surface
- Be A minimum of 300mm wider than the largest bin used onsite.
- If bins are moved manually, the route must not exceed a grade of 1:14.
- If a bin moving device is used, the route cannot exceed the maximum operating grade of the device. This is typically a grade of 1:4, however this will vary depending on the model of bin moving device acquired for the site.

As the distance of the bin moving paths exceeds 10m, a bin moving device will be required to aid the movement of full bins. The developer is responsible for supplying all equipment required for moving bins this includes any bin lifters, bin moving devices and waste transfer bins. This equipment must be new and appropriate for the site. The developer should contact a bin-tug, trailer or tractor consultant to provide equipment recommendations.

Once the site is operational (and the developers is no longer involved) the building proprietors/strata will be responsible for maintaining, repairing and replacing waste management equipment.

Bins may have to be fitted with hitches to enable the simultaneous transportation of multiple bins to the collection area. Council must be informed of any hitch attachments required to be installed on bins.

15.0 EQUIPMENT SUMMARY

Table 11: Equipment Summary

	Part	Qty	Notes
Chutes	Please refer to supplier's information	12	(See APPENDIX B.1 for Typical Dual Chute Layout)
Chute Equipment	General Waste and Recycling Single Bin	4	(See APPENDIX B.3 for Typical Linear System)
	3-bin 1100L Linear Track System	8	
Other Equipment	Suitable Bin Moving Device	1	(See APPENDIX: D.1 for Typical Bin Movers)
	240L Bin Lifter	2	(See APPENDIX D.4 for Typical Bin Lifter)

16.0 WASTE ROOMS

The areas allocated for waste storage and collection areas are detailed in the table below and are estimates only. Additional bins or volume handling equipment can be included in these rooms to increase days of capacity or manual labour required in operation.

Table 12: Waste Room Areas – Stage 1

Level	Waste Room Type	Equipment	Estimated Area Required (m ²)	Actual Area Provided (m ²)
LG	Bldg. E Chute Discharge Room	General waste: 1 x 3-bin 1100L linear 2 x 1100L bins Recycling: 1 x 3-bin 1100L linear 2 x 1100L bins	38	41
LG	Bldg. S (Core 1) Chute Discharge Room	General waste: 2 x 1100L Bins Recycling: 2 x 1100L Bins	12	13
LG	Bldg. S (Core 2) Chute Discharge Room	General waste: 1 x 3-bin 1100L linear 2 x 1100L bins Recycling: 1 x 3-bin 1100L linear 2 x 1100L bins	38	38
LG	Stage 1 FOGO Bin Room	FOGO: 15 x 240L bins	13	14
LG	Stage 1 Res. Bin Holding Room	General Waste: 16 x 1100L bins Recycling: 16 x 1100L bins 1 x 240L Bin Lifter 1 x Bin Mover	106	107
LG	Stage 1 Bulky Waste Room		21	24
LG	Stage 1 Retail Bin Room	General Waste: 2 x 1100L bins Recycling: 2 x 1100L bins	12	13
LG	Stage 1 Commercial Bin Room	General Waste: 1 x 1100L bins Recycling: 1 x 1100L bins	6	7

Table 13: Waste Room Areas – Stage 2

Level	Waste Room Type	Equipment	Estimated Area Required (m ²)	Actual Area Provided (m ²)
LG	Bldg. N (Core 1) Chute Discharge Room	General waste: 1 x 3-bin 1100L linear 2 x 1100L bins Recycling: 1 x 3-bin 1100L linear 2 x 1100L bins	59	59
LG	Bldg. N (Core 2) Chute Discharge Room	General waste: 2 x 1100L Bins Recycling: 2 x 1100L Bins	12	12
LG	Bldg. W Chute Discharge Room	General waste: 1 x 3-bin 1100L linear 2 x 1100L bins Recycling: 1 x 3-bin 1100L linear 2 x 1100L bins	38	56
LG	Stage 2 FOGO Bin Room	FOGO: 20 x 240L bins	17	17
LG	Stage 2 Res. Bin Holding Room	General Waste: 20 x 1100L bins Recycling: 20 x 1100L bins 1 x 240L Bin Lifter 1 x Bin Mover	129	130
LG	Stage 2 Bulky Waste Room		28	28
LG	Stage 2 Retail Bin Room	General Waste: 2 x 1100L bins Recycling: 2 x 1100L bins	10	10
LG	Stage 1 Commercial Bin Room	General Waste: 1 x 1100L bins Recycling: 2 x 1100L bins	6	8

EFC recommends bins sizes, collection frequencies and/or equipment for best practice waste management at this site, however EFC also acknowledges there are a range of other suitable options that may alter waste room requirements (e.g. floor area, accessibility, head height, etc.)

The waste room areas have been calculated based on equipment requirements and/or bin dimensions with an additional 70% of bin GFA factored in for manoeuvrability. In addition, all doorways and passageways facilitating the movement of bins and/or bulky waste items must be at least 2000mm wide.

The following table provides further waste room requirements.

Table 14: Waste Room Requirements

Waste Room Type	Waste Room Requirements
Chute Discharge Room	<ul style="list-style-type: none"> • Ceiling clearance height must be a minimum of 3000mm (subject to penetration location) • The chute penetration must have a minimum 500mm clearance of any service pipes or other overhead obstacles • All chute discharge points should be caged off to ensure the safety of any personnel accessing the waste room • 200mm clearance is required around equipment • Where a chute offset is required, the angle of the offset must not exceed 30 degrees (subject to number of consecutive offset and/or up to 1500mm)
Residential Bin Holding Room and/or Bin Collection Area	<ul style="list-style-type: none"> • Bins must not be stacked in rows that are more than two bins deep.
Residential Communal FOGO Bin Rooms	<ul style="list-style-type: none"> • Bins should be arranged so that all bins are accessible. Bins are not to be placed in front of one another or in such a way as to restrict access to the other bins for use. • Rooms must be well ventilated either naturally or mechanically in accordance with AS1668.4.2012 • Cleaning facilities such as hose hock and drainage for odour and hygiene control must be provided. • It is recommended a dustpan and broom is provided in this room for residents to clean up unexpected spillages when using bins.
Bulky Waste Room	<ul style="list-style-type: none"> • May be a dedicated room or screened area within another waste room • Must be in close proximity to the collection area • Area must also be allocated for the segregation of e-waste, gas bottles, cardboard, etc. • Doorway should be a minimum of 2000mm wide
Commercial/Retail Bin Room	<ul style="list-style-type: none"> • In order to ensure staff safety, all bins should be arranged so they can be accessed without moving another bin • Bins must be coordinated with the hinge of the lid facing the back. This is to allow for ideal access to the bin.

17.0 CONSTRUCTION REQUIREMENTS

Waste room construction must comply with the minimum standards as outlined in *The Hills Development Control Plan 2012*, in order to minimise odours, deter vermin, protect surrounding areas, and make it a user-friendly and safe area.

The *NSW Better practice guide for resource recovery in residential developments (2019)* also states that better practice bin storage areas should achieve more than the minimum compliance requirements, which are as follows:

- Ensuring BCA compliance, including ventilation. Where required, ventilation system must comply with AS1668.4-2012 The use of ventilation and air conditioning in buildings.
- Ensuring storage areas are well lit (sensor lighting preferred) and have lighting available 24 hours a day.
- Provision of bin washing facilities, including taps for hot and cold water provided through a centralised mixing valve. The taps must be protected from bins and be located where they can be easily accessed even when the area is at bin capacity.
- Floor constructed of concrete at least 75mm thick.
- Floor graded so that any water is directed to a sewer authority approved drainage connection to ensure washing bins and/or waste storage areas do not discharge flow into the stormwater drain.
- Provision of smooth, cleanable and durable floor and wall surfaces that extend up the wall to a height equivalent to any bins held in the area.
- Ensuring ceilings are finished with a smooth-faced non-absorbent material capable of being cleaned.
- All surfaces (walls, ceiling and floors) finished in a light colour.

17.1 ADDITIONAL CONSIDERATIONS

- Waste room floor to be sealed with a two-pack epoxy;
- All corners coved and sealed 1,200mm up, this is to eliminate build-up of dirt;
- Hot and cold water tap height and light switch height of 1.6m;
- Storm water access preventatives (grate);
- All walls painted with light colour and washable paint;
- Equipment electric outlets to be installed 1700mm above finished floor level;
- Optional automatic odour and pest control system installed
- If 660L or 1100L bins are utilised, 2 x 820mm (minimum) double-doors must be used;
- All personnel doors are hinged, lockable and self-closing;
- Conform to the Building Code of Australia, Australian standards and local laws; and
- Childproofing and public/operator safety shall be assessed and ensured
- Waste and recycling rooms must have their own exhaust ventilation system either;
 - Mechanically - exhausting at a rate of 5L/m² floor area, with a minimum rate of 100L/s minimum. Mechanical exhaust systems shall comply with AS1668.4.2012 and not cause any inconvenience, noise or odour problem; or
 - Naturally - permanent, unobstructed, and opening direct to the external air, not less than one-twentieth (1/20) of the floor area.

18.0 USEFUL CONTACTS

EFC does not warrant or make representation for goods or services provided by suppliers.

LOCAL COUNCIL

The Hills Shire Council Customer Service	Ph: (02) 9843 0555	E: medial@thehills.nsw.gov.au
---	--------------------	---

PRIVATE WASTE COLLECTION PROVIDER

Capital City Waste Services	Ph: 02 9599 9999	E: service@ccws.net.au
Sydney Waste	Ph: 02 8661 0031	
Waste Clear	Ph: 1300 525 352	E: admin@wasteclear.com.au

BIN MOVING DEVICE SUPPLIERS

Elephants Foot Equipment	Ph: 1300 435 374	E: equipment@elephantsfoot.com.au
Sitecraft	Ph: 1300 363 152	E: sales@sitecraft.com.au

BALER SUPPLIERS

Elephants Foot Equipment	Ph: 1300 435 374	E: equipment@elephantsfoot.com.au
--------------------------	------------------	---

ORGANIC DIGESTERS AND DEHYDRATORS

Elephants Foot Equipment	Ph: 1300 435 374	E: equipment@elephantsfoot.com.au
Waste Master	Ph: 1800 614 272	E: hello@wastemasterpacific.com.au

COOKING OIL CONTAINERS AND DISPOSAL

Cookers	Ph: 1300 882 299	E: info@cookers.com.au
Auscol	Ph: 1800 629 476	E: sales@auscol.com

ODOUR CONTROL

Elephants Foot Equipment	Ph: 1300 435 374	E: equipment@elephantsfoot.com.au
--------------------------	------------------	---

SOURCE SPERATION BINS

Method Recycling	Ph: 0499 890 455	
------------------	------------------	--

BINS AND BIN EQUIPMENT

Elephants Foot Equipment	Ph: 1300 435 374	E: equipment@elephantsfoot.com.au
SULO	Ph: 1300 364 388	E: sulosales@pactgroup.com

CHUTES, COMPACTORS AND EDIVERTER SYSTEMS

Elephants Foot Chute Solutions	Ph: 1300 435 374	E: chutes@elephantsfoot.com.au
--------------------------------	------------------	---

APPENDIX A: ARCHITECTURAL PLANS

APPENDIX: A.1 LOWER GROUND FLOOR PLAN

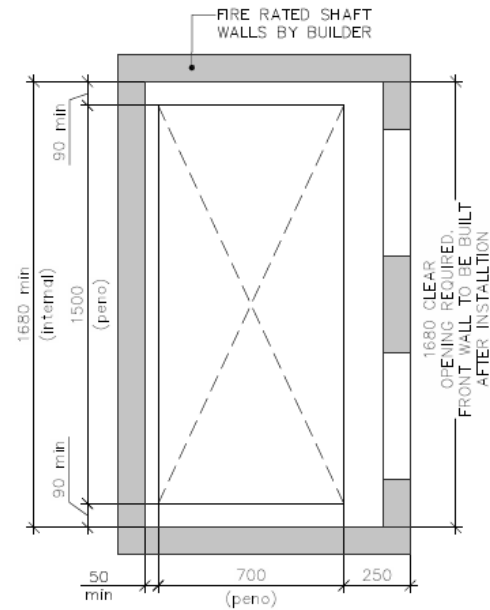


Source: A Plus Design Group, A203, Rev C, 19/12/2025 – Lower Ground (Amended DA).

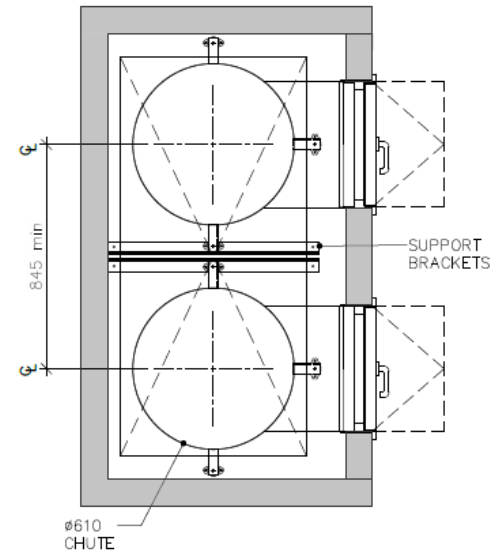
APPENDIX B: INSTALLATION EQUIPMENT



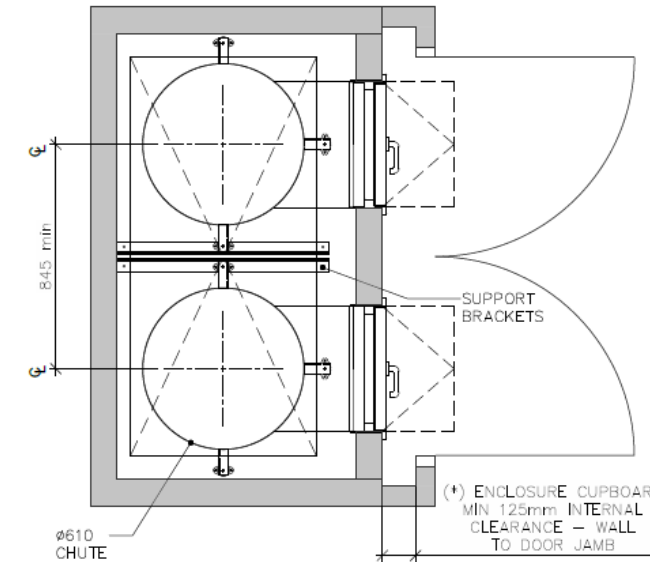
CHUTE SHAFT & PENETRATION SET-OUT DUAL Ø610 STEEL



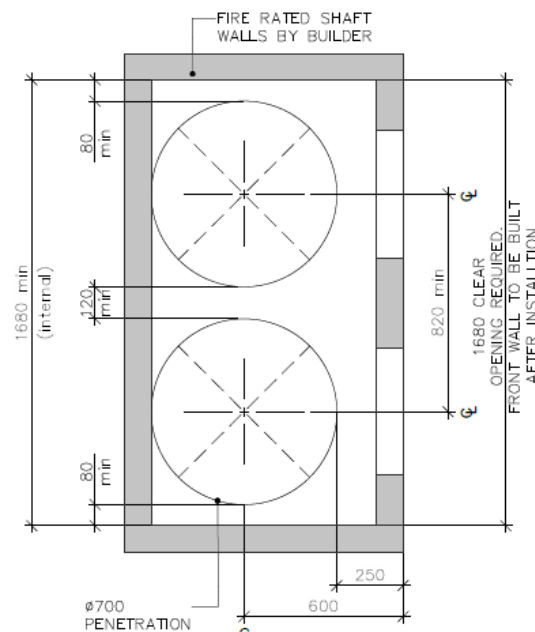
01 DUAL (610Ø) GALV. STEEL CHUTE LAYOUT PENETRATION SET-OUT



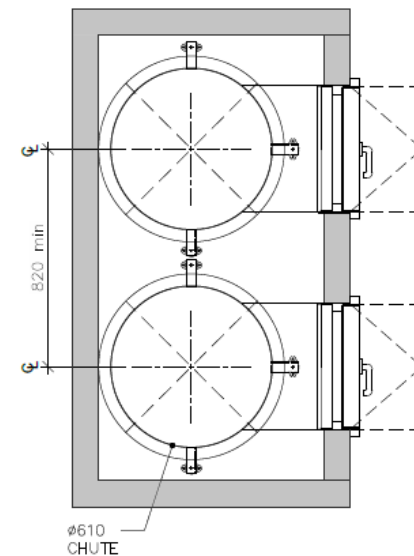
02 DUAL (610Ø) GALV. STEEL CHUTE LAYOUT



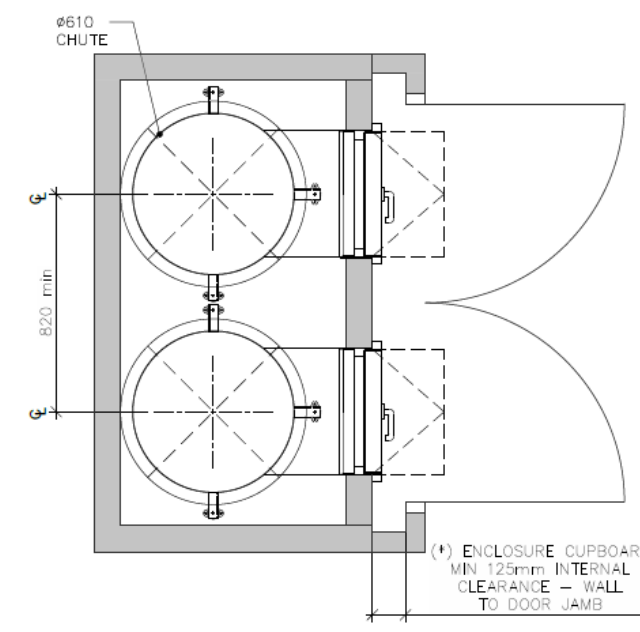
03 DUAL (610Ø) GALV. STEEL CHUTE LAYOUT with ENCLOSURE CUPBOARD (*)



04 DUAL (610Ø) GALV. STEEL CHUTE LAYOUT WITH CIRCULAR PENETRATION SET-OUT



05 DUAL (610Ø) GALV. STEEL CHUTE LAYOUT (W/ CIRCULAR PENETRATION)

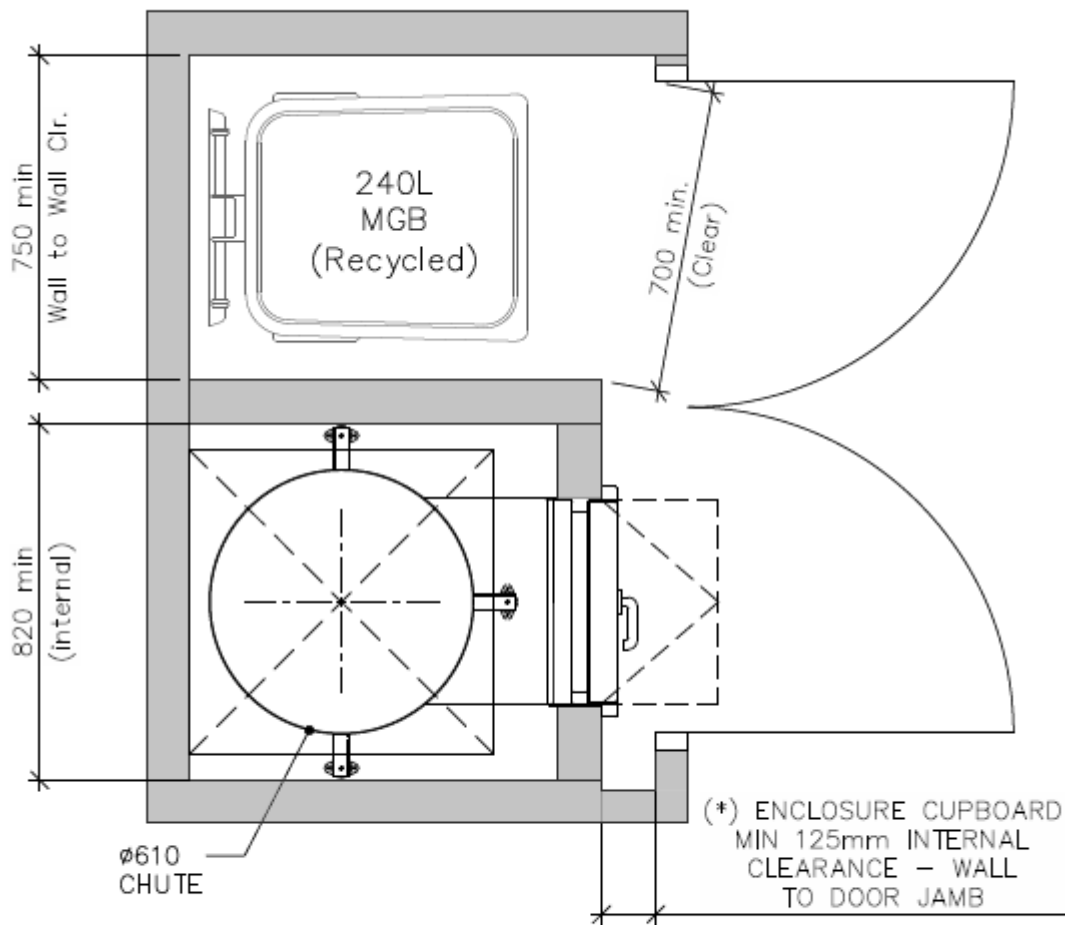


06 DUAL (610Ø) GALV. STEEL CHUTE LAYOUT with ENCLOSURE CUPBOARD (*)

(*) NOTE: ENCLOSURES ARE RECOMMENDED IF THE CHUTE OPENS DIRECTLY TO A CORRIDOR OR IS NOT LOCATED IN A WASTE ROOM. IF CHUTE ACCESS IS WITHIN A WASTE ROOM THEN THE CUPBOARD ENCLOSURES ARE NOT REQUIRED.

SCALE 1:25 @ A3

APPENDIX: B.2 EXAMPLE RESIDENTIAL LEVEL RECYCLING BIN LAYOUT



07 TYPICAL (610 ϕ) GALV. STEEL CHUTE LAYOUT
with ENCLOSURE(*) & RECYCLING COMPARTMENT

Please Note: This is an example only – please refer to supplier's information and specification

APPENDIX: B.3 TYPICAL LINEAR TRACK SYSTEM FOR 1100L MGBS



1100 LITRE LINEAR TRACK SYSTEM

PRODUCT INFORMATION

Elephants Foot 1100 Litre bin Linear Track System is a versatile waste handling solution for many types of multi-storey or multi-level developments. The Linear Track System collects waste or recycling being disposed from the floors above through the chute system, discharging the material via a hopper that feeds the bins. Electromechanically driven with automated operation, the system utilises linear motion to automatically change over full bins. Once all the bins are filled, an indicator light will illuminate signifying that the bins are ready for withdrawal and collection. Available with or without compaction unit, our standard 660 litre bin Linear Track System is available in the standard 2 bin option. Our 3 Bin option is available as a special order.



SPECIFICATIONS

System Control	Electric PLC
Power Supply	415 V AC / 10A / 5 PIN
Motor Size (kW)	1.1
Maximum bin load	440 kg
Noise (dBA)	<85
Bin Size (L)	1100
Cycle time (sec)	60
Bin Quantity options	2 or 3

OPTIONAL EXTRAS

- Compaction unit – Please refer to the bin compactor product information sheet for details and specifications
- Enhanced safety add on's – Interlocking barriers, occupancy sensors or safety light curtains (presence sensing light barriers)
- Full bin SMS and email notification
- CMMS and BMS integration
- Extend warranty – Terms and conditions apply

STANDARD FEATURES & BENEFITS

- Simple operation with user friendly controls
- Increased waste servicing efficiency for the development.
- Automatic system control with manual override
- Robust unit construction for long performance life
- Low service and maintain costs
- Rotating flashing beacon (activated during operation)
- Quiet and efficient system operation
- Maximise safety for residents, caretakers and collectors
- Restrained design with minimal moving parts
- Can suit low ceiling clearances
- Floor contact components fully galvanised steel
- Retro fitting options to suit other chutes systems
- Compliant with relevant Building Codes and Standards
- Standard 12 month warranty

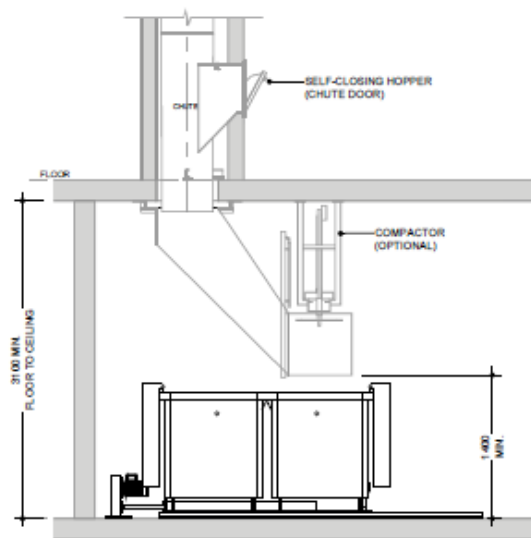
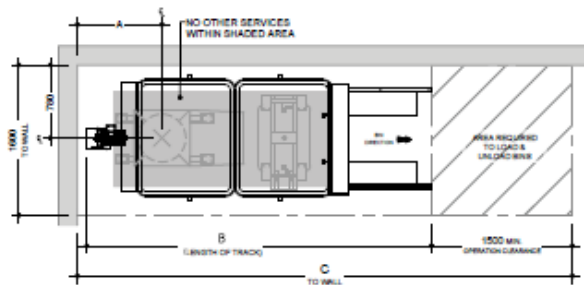


1,100 LITRE LINEAR TRACK SYSTEM



No. of Bins	Reference (mm)		
	A	B	C
2	900	3700	5300
3	2100	5940	7550

Available with or without compaction unit, our standard 1100 litre bin Linear Track System is available in the standard 2 bin option. Our 3 Bin option is available as a special order.



Notes:
Bins not provided by Elephants Foot

Drawings shown are for general information purposes only and provide minimum equipment spacial requirements for waste room design.

These drawings are not intended for site specific use or for construction. Each project is unique and will be designed to suit.

Additional equipment options, systems and configurations are available. For design assessment, information and advice, please contact an Elephants Foot design consultant on 1300 435 374

Please Note: This is an example only – please refer to supplier's information and specification

APPENDIX C: PRIMARY WASTE MANAGEMENT PROVISIONS

APPENDIX: C.1 TYPICAL BIN SPECIFICATIONS


Mobile bins

Mobile bins come in a variety of sizes and are designed for lifting and emptying by purpose-built equipment.

Mobile bins with capacities of up to 1700L must comply with *AS4123.6-2006 Mobile waste containers* which specifies standard sizes and sets out the colour designations for the bodies and lids of mobile waste containers indicating the type of materials they are used to collect.

The most common bin sizes are provided below, although not all sizes are shown. The dimensions are a guide only and differ slightly between manufacturers. Some bins have flat or domed lids and are used with different lifting devices. Refer to *AS4123.6-2006* for further details.

Table G1.1: Average dimension ranges for two-wheel mobile bins




Bin capacity	80L	120L	140L	240L	360L
Height (mm)	870	940	1065	1080	1100
Depth (mm)	530	530	540	735	820
Width (mm)	450	485	500	580	600
Approximate footprint (m ²)	0.24	0.26–0.33	0.27-0.33	0.41–0.43	0.49
Approximate weight (kg)	8.5	9.5	10.4	15.5	23
Approximate maximum load (kg)	32	48	56	96	Not known

Wheelie bin

Sources include Sulo, Single Waste, Cleanaway, SUEZ, just wheelie bins and Perth Waste for two-wheel mobile bins

Table G1.2: Average dimension ranges for four-wheel bulk bins



Bin capacity	660L	770L	1100L	1300L	1700L
Height (mm)	1250	1425	1470	1480	1470
Depth (mm)	850	1100	1245	1250	1250
Width (mm)	1370	1370	1370	1770	1770
Approx footprint (m ²)	0.86–1.16	1.51	1.33–1.74	2.21	2.21
Approx weight (kg)	45	Not known	65	Not known	Not known
Approx maximum load (kg)	310	Not known	440	Not known	Not known

Dome or flat lid container

Sources include Sulo, Signal Waste, Cleanaway, SUEZ, Just Wheelie Bins and Perth Waste

Source: *Better Practice Guide For Resource Recovery In Residential Developments 2019, NSW Environmental Protection Authority*

APPENDIX: C.2 SIGNAGE FOR WASTE AND RECYCLING BINS

Waste signs

Signs and educational materials perform several functions including:

- informing residents why it is important to recover resources and protect the environment
- providing clear instructions on how to use the bins and services provided
- alerting people to any dangers or hazards within the bin storage areas.

All waste, recycling and organic bins should be Australian Standard colours and clearly and correctly labelled, such as by a sticker on the lid and/or the body of the bin.

Communal bin storage areas should be clearly signposted with signs outlining how to correctly separate waste into the bins provided. The local council responsible for waste services may be a good source of signs and posters and can advise on what signs are suitable.

Information on who to contact to find out more about the recycling and/or other resource recovery services in the building should also be displayed in communal areas, such as on a noticeboard.

The Planet Ark website also has resources available free of charge for use by businesses and councils. These signs can be found at businessrecycling.com.au/research/signage.cfm

Figure I1.1: Examples of waste wall posters (EPA supplied)



Figure I1.2: Examples of bin lid stickers (EPA supplied)



Source: *Better Practice Guide For Resource Recovery In Residential Developments 2019*, NSW Environmental Protection Authority

Problem waste signs

The EPA has also produced a range of images and signs that can be used for problem wastes, such as fluoro globes and tubes, household and car batteries, e-waste and smoke detectors. To access these resources, contact the NSW EPA. Some examples are shown below.

Figure I2.1: Problem waste signs



Safety signs

The use of safety signs for waste resource recovery rooms must comply with *AS1319 Safety signs for occupational environments*. Safety signs must be used to regulate and control safety related to behaviour, warn of hazards and provide emergency information, including fire protection information. Suitable signs should be decided for each development as required.

Figure I3.1: Example safety signs



Source: *Better Practice Guide For Resource Recovery In Residential Developments 2019*, NSW Environmental Protection Authority

APPENDIX: C.3 EXAMPLE COLLECTION VEHICLE INFORMATION

General

Appropriate heavy rigid vehicle standards should be incorporated into the road and street designs in new developments where onsite collections are proposed. Road and street designs must comply with relevant Acts, regulations, guidelines, and codes administered by Austroads, Standards Australia, NSW Roads and Maritime Services, WorkSafe NSW and any local council traffic requirements.

Applicants and building designers should consult with councils and other relevant authorities before designing new roads or streets and access points for waste collection vehicles to establish specific design requirements.

Table H4.1: Australian Standards for turning circles for medium and heavy rigid class vehicles

Vehicle class	Overall length (m)	Design width (m)	Design turning radius (m)	Swept circle (m)	Clearance (travel) height (m)
Medium rigid vehicle	8.80	2.5	10.0	21.6	4.5
Heavy rigid vehicle	12.5	2.5	12.5	27.8	4.5

Source: *Better Practice Guide For Resource Recovery In Residential Developments 2019*, NSW Environmental Protection Authority

Large collection vehicles

Waste collection vehicles may be side-loading, rear-loading, front-lift-loading, hook or crane lift trucks. Vehicle dimensions vary by collection service, manufacturer, make and model. It is not possible to provide definitive dimensions, so architects and developers should consult with the local council and/or contractors.

The following characteristics represent typical collection vehicles and are provided for guidance only. Reference to *AS2890.2 Parking facilities: off-street commercial vehicle facilities* for detailed requirements, including vehicle dimensions, is recommended.

Table B2.1: Collection vehicle dimensions

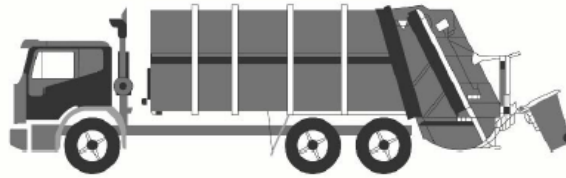
Vehicle type	Rear-loading	Side-loading*	Front-lift-loading	Hook truck	Crane truck
Length overall (m)	10.5	9.6	11.8	10.0	10.0
Width overall (m)	2.5	2.5	2.5	3.0	2.5
Travel height (m)	3.9	3.6	4.8	4.7	3.8
Operational height for loading (m)	3.9	4.2	6.5	3.0	8.75
Vehicle tare weight (t)	13.1	11.8	16.7	13.0	13.0
Maximum payload (t)	10.0	10.8	11.0	14.5	9.5
Turning circle (m)	25.0	21.4	25.0	25.0	18

* The maximum reach of a side arm is 3 m.

Sources: JJ Richards, SUEZ, MacDonald Johnson, Cleanaway, Garwood, Ros Roca, Bingo and Edbro. Figures shown represent the maximum dimensions for each vehicle type.

Rear-loading collection vehicles

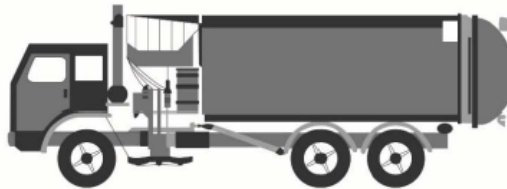
These vehicles are commonly used for domestic waste collections from MUDs and RFBs and sometimes for recycling. They can be used to collect waste stored in mobile bins or bulk bins, particularly where bins are not presented at the kerbside. They are also used for collecting bulky waste.



Rear-loading waste collection vehicle

Side-loading collection vehicles

This is the most commonly used vehicle for domestic waste, recycling and organics collections. It is only suitable for collecting mobile bins up to 360L in capacity.



Side-loading waste collection vehicle

Front-lift-loading collection vehicles

These vehicles are commonly used for collecting commercial and industrial waste. They can only collect specially designed front-lift bulk bins and not mobile bins.



Front-lift-loading waste collection vehicle

Small collection vehicles

Typically, councils and their contractors operate with large collection vehicles (heavy rigid class vehicles) because they carry greater payloads and allow for more cost-effective collection services. Some councils, or their contractors, may have smaller collection vehicles in their fleet. Early discussion with the council is important to confirm this, but it should not be assumed that the council will have access to small collection vehicles.

The waste management systems and the location of the collection point should always be designed so that the council can provide the standard domestic waste service.

Source: *Better Practice Guide For Resource Recovery In Residential Developments 2019*, NSW Environmental Protection Authority

APPENDIX D: SECONDARY WASTE MANAGEMENT PROVISIONS

APPENDIX: D.1 EXAMPLE HANDHELD BIN MOVERS



MOVEXX T2500 BIN MOVER BATTERY ELECTRIC

MoveXX T2500 Tow Tug is an extremely user friendly battery powered mobile towing unit that is ideal for applications where trolleys and rolling objects need to be moved from one place to another simply, efficiently and without physical effort. Some standard features included are: battery indicator, on board battery charger, battery, adjustable handle, dual speed and electric brake.

These units are fitted with an electromagnetic brake system for use on ramps and slopes

Features

- Electromagnetic brake for use on ramps and slopes
- Adjustable height handle



SPECIFICATION				
MODEL	DIMENSIONS (MM)	OPTIONS	PULL - PUSH CAPACITY (KG)	BATTERY
T2500-D	511 (w) x 757 (l)	* Centre mount 2x 240 lt. wheelie bin attachment	2500	AGM batteries 2x 85AH up to 8 hrs continuous operation
TOWING CAPACITY - ON FLAT GROUND (all models)			TOWING CAPACITY - SLOPE (all models)	
Towing up to 4x 660 lt. Wheelie Bin			Towing up to 2x 660 lt. Wheelie Bin Up / Down maximum 25% (1:4 slope)	
Towing up to 4x 1100 lt. Wheelie Bin			Towing up to 1x 1100 lt. Wheelie Bin Up / Down maximum 25% (1:4 slope)	
**Electromagnetic brake for use on ramps and slopes				



Please Note: This is an example only – please contact supplier for specific recommendations.

Source: Sitecraft - www.sitecraft.net.au

APPENDIX: D.2 EXAMPLE BIN TRAILERS



BIN TRAILER WITH ALUMINUM RAMP

Bin trailer suitable for moving 240lt, 660lt and 1,100lt bins including a 1200mm rear ramp complete with locking latches and gas strut assist. Height draw bar fitted with a jockey wheel large pneumatic tyres with precision bearing hubs



SPECIFICATION

MODEL	DIMENSION (MM)	SUITABLE FOR MOVING	PART NUMBERS	REAR RAMP DIMENSION (MM)
4x Bins Trailer	Internal - 1560 (l) x 1200 (w)	4x 240lt. Wheelie Bin	78811604	1200mm rear ramp complete with positive locking and gas strut assist
	External - 2300 (l) x 1500	2x 660lt. Wheelie Bin		
		1x 110lt. Wheelie Bin		
6x Bins Trailer	Internal - 2350 (l) x 1200 (w)	6x 240lt. Wheelie Bin	78811065	1200mm rear ramp complete with positive locking and gas strut assist
	External - 3100 (l) x 1500 (w)	3x 660lt. Wheelie Bin		
		2x 1100lt. Wheelie Bin		
8x Bins Trailer	Internal - 3200 (l) x 1200 (w)	8x 240lt. Wheelie Bin	78811066	1200mm rear ramp complete with positive locking and gas strut assist
	External - 3900 (l) x 1500 (w)	4x 660lt. Wheelie Bin		
		3x 1100lt. Wheelie Bin		
10x Bins Trailer	Internal - 3900 (l) x 1200 (w)	10x 240lt. Wheelie Bin	78811067	1200mm rear ramp complete with positive locking and gas strut assist
	External - 4600 (l) x 1500 (w)	5x 660lt. Wheelie Bin		
		4x 1100lt. Wheelie Bin		

OPTIONS

- Full registration
- Upgrade Includes : Lights | Wiring | Suspension | aaa Tyres | Compliance Plate

Please Note: This is an example only – please contact supplier for specific recommendations.

Source: Sitecraft - www.sitecraft.net.au

APPENDIX: D.3 EXAMPLE BIN TOWING ATTACHMENTS



UNIVERSAL BIN TOWING ATTACHMENTS

SUITE 660LT / 1100LT WHEELIE BINS

PARTS & FEATURES

Front Only - Part Number: 78811672

- Suit Sulo & Otto 600lt / 1100lt MGBs
- Spring loaded draw bar folds up
- No drilling of holes in the bin required
- Solidly fixed to the base of the bin using the castor mounting bolts
- Passivated zinc finish for long life
- Correct Rear Fixed or Directional Lock castors should be used

Rear Only - Part Number: 78811673

- Suit Sulo & Otto 600lt / 1100lt MGBs
- No drilling of holes in the bin required
- Solidly fixed to the base of the bin using the castor mounting bolts
- Passivated zinc finish for long life
- Correct Rear Fixed or Directional Lock castors should be used

For Steel Bin Front Only - Part Number: 78811781

- Suit Sulo & Otto 600lt / 1100lt MGBs
- No drilling of holes in the bin required
- Solidly fixed to the base of the bin using the castor mounting bolts
- Passivated zinc finish for long life
- Correct Rear Fixed or Directional Lock castors should be used

Direction Lock : 53191001

- Suit Sulo & Otto 600lt / 1100lt MGBs
- No drilling of holes in the bin required
- Solidly fixed to the base of the bin using the castor mounting bolts
- Passivated zinc finish for long life
- Correct Rear Fixed or Directional Lock castors should be used



Please Note: This is an example only – please contact supplier for specific recommendations.

Source: Sitecraft - www.sitecraft.net.au

APPENDIX: D.4 EXAMPLE BIN LIFTER FOR 240L BINS

versatip

Versatip Bin Tipper – 1500mm Tip



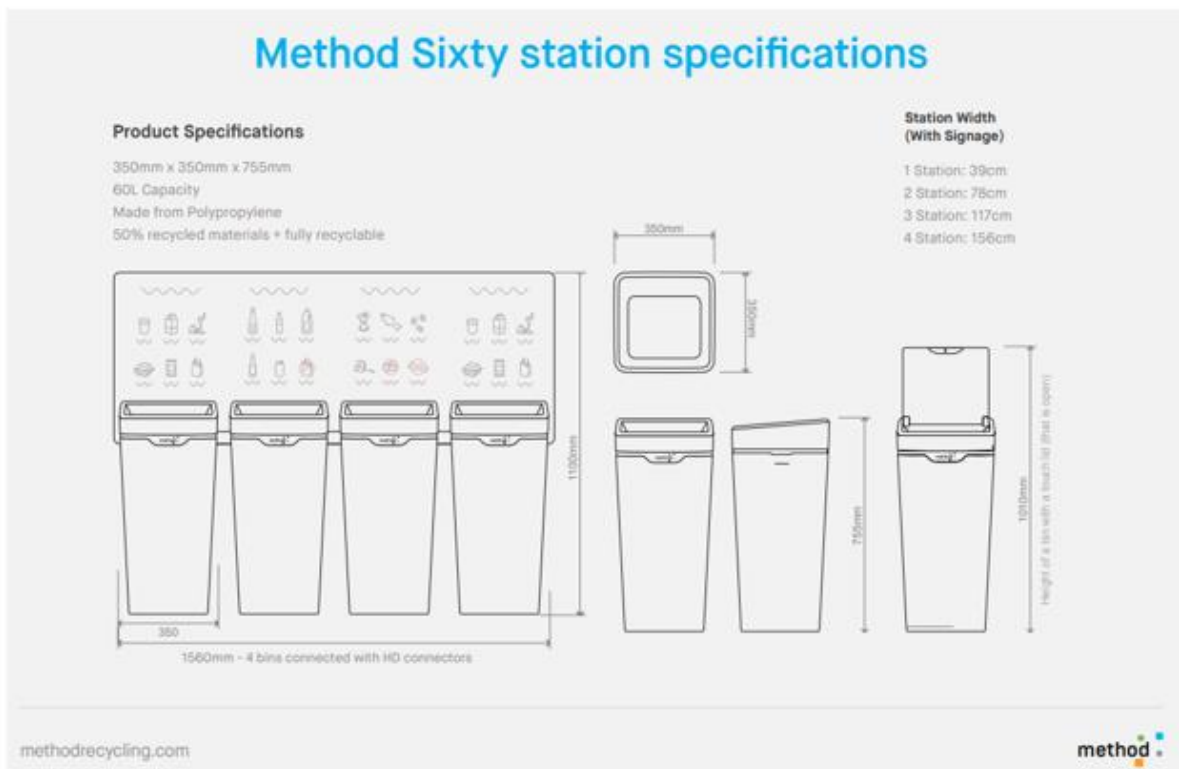
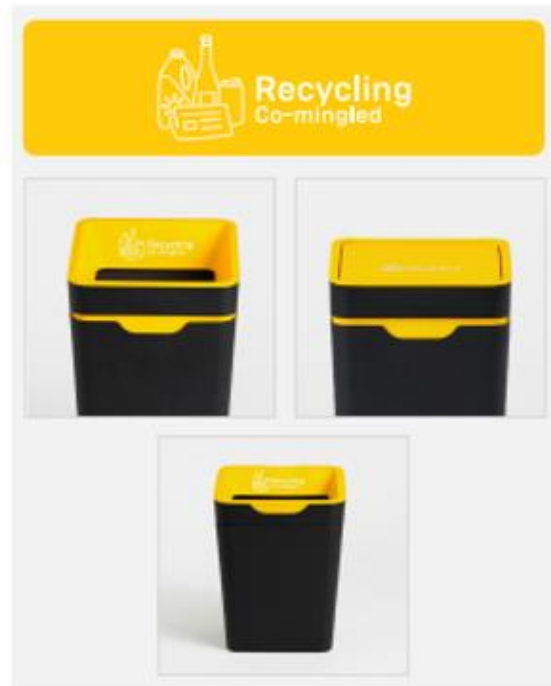
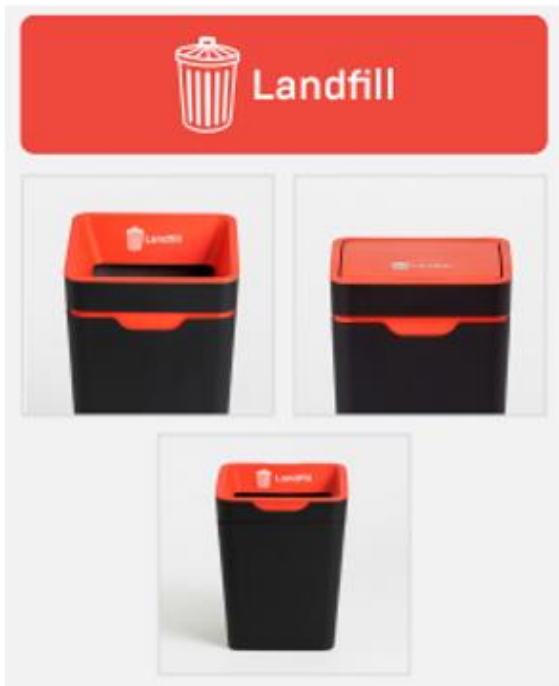
Specifications

Product Code	69121009
Product Name	1500mm Tip – Battery Powered
Capacity (kg)	250
Height (mm)	2085
Length (mm)	1330
Power Source	Battery Powered
Tipping Height (mm)	1500
Width (mm)	990

Please Note: This is an example only – please contact supplier for specific recommendations.

Source: Elephants Foot Equipment - www.elephantsfoot.com.au/equipment/

APPENDIX: D.5 EXAMPLE SOURCE SEPARATION RECEPTACLES



Source: Method Recycling - www.methodrecycling.com