

- LEGEND:-**
- VC denotes VEHICLE CROSSING
 - PC denotes PEDESTRIAN CROSSING
 - TK denotes TOP OF KERB
 - GUT denotes KERB GUTTER
 - LIP denotes LIP LINE
 - COM denotes COMMUNICATIONS PIT
 - PP denotes POWER POLE
 - LP denotes LIGHT POLE
 - ELP denotes ELECTRICITY PILLAR
 - EB denotes ELECTRICITY BOX
 - HYD denotes HYDRANT
 - SV denotes STOP VALVE
 - SWP denotes STORMWATER PIT
 - IL denotes INVERT LEVEL
 - SMH denotes SEWER MANHOLE
 - SIP denotes SEWER INSPECTION PIT
 - US denotes UNCLASSIFIED SERVICE
 - FL denotes FLOOR LEVEL
 - D.S.H denote DIAMETER, SPREAD AND HEIGHT of TREE

UNDERGROUND SERVICES LEGEND - QUALITY LEVEL D (AS 5488-2013)

- W POTABLE WATER MAIN
- D STORMWATER PIPE
- S SEWER MAIN
- C COMMUNICATIONS CABLES
- E ELECTRICITY CABLES
- G GAS MAIN

APPROXIMATE POSITION ONLY VIDE 'DIAL-BEFORE-YOU-DIG' PLANS
JOB No. 9689787 WHERE CRITICAL TO DESIGN, UNDERGROUND
SERVICES SHOULD BE LOCATED BY MORE ACCURATE METHODS.

CAUTION: FIBRE OPTIC CABLES ARE PRESENT IN THIS AREA

SERVICES NOTES:-

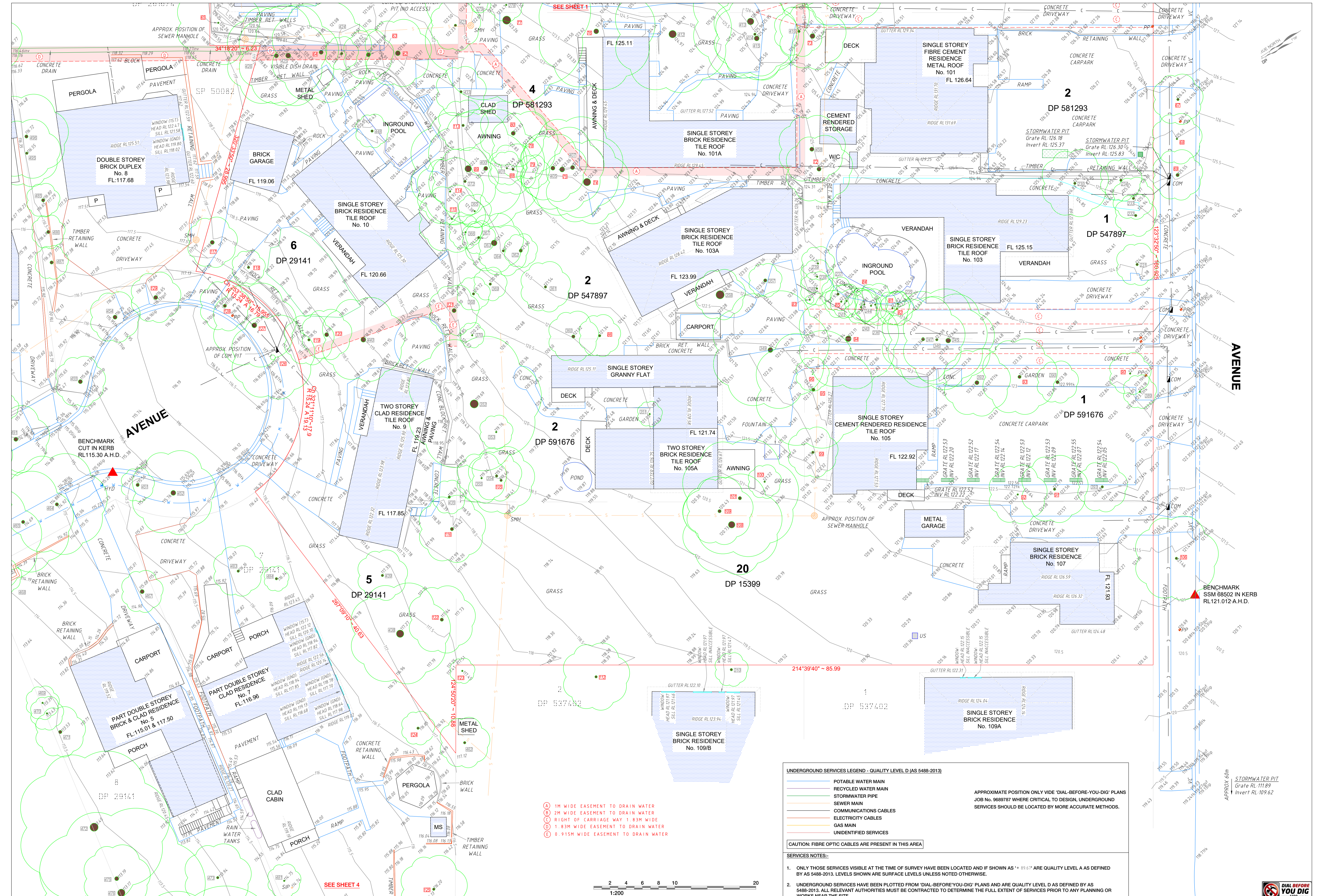
- ONLY THOSE SERVICES VISIBLE AT THE TIME OF SURVEY HAVE BEEN LOCATED AND IF SHOWN AS "A" ARE QUALITY LEVEL A AS DEFINED BY AS 5488-2013. LEVELS SHOWN ARE SURFACE LEVELS UNLESS NOTED OTHERWISE.
- UNDERGROUND SERVICES HAVE BEEN PLOTTED FROM "DIAL-BEFORE-YOU-DIG" PLANS AND ARE QUALITY LEVEL D AS DEFINED BY AS 5488-2013. ALL RELEVANT AUTHORITIES MUST BE CONTRACTED TO DETERMINE THE FULL EXTENT OF SERVICES PRIOR TO ANY PLANNING OR WORKS NEAR THE SITE.

- (A) 1M WIDE EASEMENT TO DRAIN WATER
- (B) 2M WIDE EASEMENT TO DRAIN WATER
- (C) RIGHT OF CARRIAGE WAY 1.83M WIDE
- (D) 1.83M WIDE EASEMENT TO DRAIN WATER
- (E) 0.915M WIDE EASEMENT TO DRAIN WATER
- (H) 1.0M WIDE EASEMENT TO DRAIN WATER



CECIL





AVENUE

AVENUE

BENCHMARK
SSM 68502 IN KERB
RL121.012 A.H.D.

BENCHMARK
SSM 68502 IN KERB
RL121.012 A.H.D.

UNDERGROUND SERVICES LEGEND - QUALITY LEVEL D (AS 5488-2013)

- POTABLE WATER MAIN
- RECYCLED WATER MAIN
- STORMWATER MAIN
- STORMWATER PIPE
- SEWER MAIN
- COMMUNICATIONS CABLES
- ELECTRICITY CABLES
- GAS MAIN
- UNIDENTIFIED SERVICES

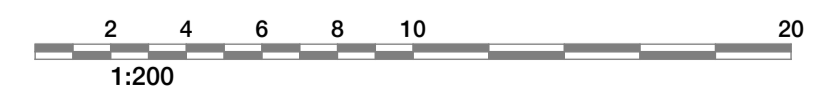
CAUTION: FIBRE OPTIC CABLES ARE PRESENT IN THIS AREA

SERVICES NOTES:

- ONLY THOSE SERVICES VISIBLE AT THE TIME OF SURVEY HAVE BEEN LOCATED AND IF SHOWN AS '+ 89.61' ARE QUALITY LEVEL A AS DEFINED BY AS 5488-2013. LEVELS SHOWN ARE SURFACE LEVELS UNLESS NOTED OTHERWISE.
- UNDERGROUND SERVICES HAVE BEEN PLOTTED FROM 'DIAL-BEFORE-YOU-DIG' PLANS AND ARE QUALITY LEVEL D AS DEFINED BY AS 5488-2013. ALL RELEVANT AUTHORITIES MUST BE CONTACTED TO DETERMINE THE FULL EXTENT OF SERVICES PRIOR TO ANY PLANNING OR WORKS NEAR THE SITE.

APPROXIMATE POSITION ONLY VIDE 'DIAL-BEFORE-YOU-DIG' PLANS
JOB No. 9689787 WHERE CRITICAL TO DESIGN, UNDERGROUND SERVICES SHOULD BE LOCATED BY MORE ACCURATE METHODS.

- (A) 1M WIDE EASEMENT TO DRAIN WATER
- (B) 2M WIDE EASEMENT TO DRAIN WATER
- (C) RIGHT OF CARRIAGE WAY 1.83M WIDE
- (D) 1.83M WIDE EASEMENT TO DRAIN WATER
- (E) 0.915M WIDE EASEMENT TO DRAIN WATER



ISSUE	DATE	AMENDMENT
A	23/9/15	ORIGINAL ISSUE
B	09/11/15	ORIENTATE TO APPROXIMATE TRUE NORTH
C	22/02/17	EXTRA DETAIL IN ROGER AVE & OLD NORTHERN ROAD ADDED
D	18/22/24	TREE RENUMBERING IN ACCORDANCE WITH ARBORIST

CLIENT:
MERCK PROPERTY PTY LTD

SCALE 1:200
ORIGIN OF LEVELS:
SSM 68502
RL 121.012

DATUM:
A.H.D.

REF.: 6864
DATE: 18/12/2024
SURV/CHK: DG/SW/JR/GE
SHEET 2 OF 6 SHEETS

PLAN
A1
DETAIL AND LEVEL SURVEY OF
93-107 CECIL AVENUE & 9-10 ROGER AVENUE
CASTLE HILL

SDG
LAND DEVELOPMENT SOLUTIONS
Unit 7 16 Kiens Road
NORTHMEAD 2152
P.O. Box 2072
NORTH PARARAMATTA 1750
t (02) 9638 7888
e office@sdg.net.au
w www.sdg.net.au

©COPYRIGHT
SDG is the owner of the copyright subsisting in these drawings, plans, designs and specifications. They must not be used, reproduced or copied in whole or in part without prior written consent of SDG

GENERAL NOTES:-

- THIS SURVEY IS NOT A 'LAND SURVEY' AS DEFINED BY THE SURVEYING AND SPATIAL INFORMATION ACT, 2002.
- THE BOUNDARIES OF THE LAND HAVE NOT BEEN SURVEYED, THE RELATIONSHIP BETWEEN THE BOUNDARIES SHOWN AND FEATURES SURVEYED ARE APPROXIMATE AND SUITABLE FOR PLOTTING PURPOSES ONLY.
- THE BOUNDARIES OF THE LAND HAVE BEEN SURVEYED, UNLESS SHOWN BY OFFSETS, THE POSITION OF THE FEATURES SHOWN IS DIAGRAMMATIC ONLY.
- ONLY THOSE SERVICES VISIBLE AT THE TIME OF SURVEY HAVE BEEN LOCATED AND ARE QUALITY LEVEL A AS DEFINED BY AS 5488-2013.
- UNDERGROUND SERVICES HAVE BEEN PLOTTED FROM 'DIAL-BEFORE-YOU-DIG' PLANS AND ARE QUALITY LEVEL D AS DEFINED BY AS 5488-2013. ALL RELEVANT AUTHORITIES MUST BE CONTACTED TO DETERMINE THE FULL EXTENT OF SERVICES PRIOR TO ANY PLANNING OR WORKS NEAR THE SITE.
- ONLY TREES GREATER THAN 3.5 METRES IN HEIGHT ARE SHOWN ON THIS PLAN AND THEIR POSITIONS AREA DIAGRAMMATIC ONLY AND MAY REQUIRE ADDITIONAL SURVEY WHERE CRITICAL TO DESIGN.
- CONTOURS ARE INDICATIVE AT GROUND FORM ONLY. SPOT LEVELS ONLY SHOULD BE USED FOR CALCULATIONS OF QUANTITIES WITH CAUTION.
- CONTOUR INTERVAL 0.5 m.
- ALL SETOUT LEVELS MUST BE REFERRED TO THE BENCH MARK.
- THE ORIENTATION OF THIS PLAN IS APPROXIMATE TRUE NORTH BASED ON THE ASSUMPTION THAT THE VARIATION OF TRUE NORTH TO MGA NORTH IS 1.06'. THIS HAS NOT BEEN VERIFIED AS PART OF THIS SURVEY AND SHOULD YOU REQUIRE A MORE ACCURATE DETERMINATION OF MGA NORTH A FURTHER SURVEY IS REQUIRED.

11. LOT 27 IN DP 15399 IS AFFECTED BY:
 * EASEMENT FOR DRAINAGE 1 WIDE (8524656) SHOWN 'A'
 LOT 22 IN DP 778595 IS AFFECTED BY:
 * RIGHT OF CARRIAGEWAY AND EASEMENT FOR SERVICES 1.83 WIDE (DP 531559, DP778595) SHOWN 'C'

- LOT 21 IN DP 778595 IS AFFECTED BY:
 * RIGHT OF CARRIAGEWAY 1.83 WIDE (DP 531559) SHOWN 'C'
 * EASEMENT FOR DRAINAGE 2 WIDE (DP778595) SHOWN 'B'
 * EASEMENT FOR DRAINAGE 1 WIDE (DP778595) SHOWN 'A'
 * EASEMENT FOR SEWERAGE PURPOSES OVER EXISTING LINE OF PIPES

- LOT 6 IN DP 705913 IS AFFECTED BY:
 * RIGHT OF CARRIAGEWAY AFFECTING THE PART OF THE LAND ABOVE DESCRIBED SHOWN SO BURDENED IN DP531559. SEE L384387
 * RIGHT OF CARRIAGEWAY AFFECTING THE PART OF THE LAND ABOVE DESCRIBED SHOWN SO BURDENED IN THE TITLE DIAGRAM (DP705913)
 * RIGHT OF CARRIAGEWAY AND EASEMENT FOR SERVICES AFFECTING THE PART OF THE LAND ABOVE DESCRIBED SHOWN SO BURDENED IN THE TITLE DIAGRAM. (DP705913)
 * EASEMENT TO DRAIN SEWERAGE OVER EXISTING LINE OF PIPES APPURTENANT TO THE LAND ABOVE DESCRIBED (DP705913)

- LOT 5 IN DP 705913 IS AFFECTED BY:
 * RIGHT OF CARRIAGEWAY AFFECTING THE PART OF THE LAND ABOVE DESCRIBED SHOWN SO BURDENED IN DP531559. SEE L384387 (DP531559)
 * RIGHT OF CARRIAGEWAY AFFECTING THE PART OF THE LAND ABOVE DESCRIBED SHOWN SO BURDENED IN THE TITLE DIAGRAM (DP705913)
 * EASEMENT TO DRAIN WATER AFFECTING THE PART OF THE LAND ABOVE DESCRIBED SHOWN SO BURDENED IN THE TITLE DIAGRAM (DP705913)
 * EASEMENT TO DRAIN SEWERAGE OVER EXISTING LINE OF PIPES AFFECTING THE PART OF THE LAND ABOVE DESCRIBED SHOWN SO BURDENED IN THE TITLE DIAGRAM (DP705913)

- LOT 4 IN DP 531559 IS AFFECTED BY:
 * COVENANT (A172085)
 * RIGHT OF CARRIAGEWAY AFFECTING THE PART(S) SHOWN SO BURDENED IN THE TITLE DIAGRAM (DP531559)
 * EASEMENT TO DRAIN WATER AFFECTING THE PART OF THE LAND SHOWN SO BURDENED IN DP705913
 * RIGHT OF CARRIAGEWAY AFFECTING THE PART OF THE LAND SHOWN SO BURDENED IN DP705913

- LOT 1 IN DP 531559 IS AFFECTED BY:
 * COVENANT (A172085)
 * RIGHT OF CARRIAGEWAY APPURTENANT AFFECTING THE PART(S) SHOWN SO BURDENED IN THE TITLE DIAGRAM (DP531559)
 * EASEMENT TO DRAIN WATER OVER EXISTING LINE OF PIPES AFFECTING THE PART SHOWN SO BURDENED IN PLAN WITH 9378000

- LOT 2 IN DP 591293 IS AFFECTED BY:
 * RESTRICTIONS ON THE USE OF LAND (AG143390)
 * POSITIVE COVENANT (AG143391)

- LOT 3 IN DP 591293 IS AFFECTED BY:
 * RIGHT OF CARRIAGEWAY AFFECTING THE PART(S) SHOWN SO BURDENED IN THE TITLE DIAGRAM (DP581293)
 * EASEMENTS TO DRAIN WATER AFFECTING THE PART(S) SHOWN SO BURDENED IN THE TITLE DIAGRAM (DP581293)

- LOT 4 IN DP 591293 IS AFFECTED BY:
 * RIGHT OF CARRIAGEWAY AFFECTING THE PART(S) SHOWN SO BURDENED IN THE TITLE DIAGRAM (DP581293)
 * EASEMENTS TO DRAIN WATER AFFECTING THE PART(S) SHOWN SO BURDENED IN THE TITLE DIAGRAM (DP581293)

- LOT 1 IN DP 547897 IS AFFECTED BY:
 * RIGHT OF CARRIAGEWAY AFFECTING THE PART(S) SHOWN SO BURDENED IN THE TITLE DIAGRAM (DP547897)

- LOT 2 IN DP 547897 IS AFFECTED BY:
 * RIGHT OF CARRIAGEWAY AFFECTING THE PART(S) SHOWN SO BURDENED IN THE TITLE DIAGRAM (DP547897)

- LOT 1 IN DP 591676 IS AFFECTED BY:
 * RIGHT OF CARRIAGEWAY AFFECTING THE SITE DESIGNATED (C7) IN THE TITLE DIAGRAM (DP591676)
 * RIGHT OF CARRIAGEWAY APPURTENANT TO THE LAND ABOVE DESCRIBED (DP591676)

- LOT 2 IN DP 591676 IS AFFECTED BY:
 * RIGHT OF CARRIAGEWAY AFFECTING THE SITE DESIGNATED (C7) IN THE TITLE DIAGRAM (DP591676)
 * RIGHT OF CARRIAGEWAY APPURTENANT TO THE LAND ABOVE DESCRIBED (DP591676)
 * EASEMENT TO DRAIN WATER APPURTENANT TO THE LAND ABOVE DESCRIBED (DP591676)

- LOT 5 IN DP 29141 IS AFFECTED BY:
 * COVENANT (G947660)
 * EASEMENT FOR DRAINAGE AFFECTING THE PROPOSED DRAINAGE EASEMENT 6 FEET WIDE SHOWN WITHIN THE SAID LOT 5 IN DP 29141 (H92246)

- LOT 6 IN DP 29141 IS AFFECTED BY:
 * COVENANT (G947660)
 * COVENANT (H585541)
 * EASEMENT TO DRAIN WATER AFFECTING THE LAND SHOWN SO BURDENED IN DP591676

12. COVENANTS AND RESTRICTIONS NOTED ON THE TITLE HAVE NOT BEEN INVESTIGATED. APPURTENANT EASEMENTS ARE NOT SHOWN

Schedule of Trees			
No.	Diam	Spread	Height
1	0.8	16	16
2	0.5	12	14
3	0.6	12	14
4	0.4	4	12
5	0.3	4	6
6	0.5	12	10
7	0.5	6	14
8	0.5	6	14
9	0.5	6	14
10	0.5	6	14
11	0.3	6	12
12	0.4	5	9
13	0.4	5	9
14	0.4	5	7
15	0.3	8	10
16	0.2	4	8
17	0.4	8	7
18	0.4	10	9
19	0.4	10	9
20	0.4	5	7
21	0.4	8	8
22	0.5	6	12
23	0.7	4	16
24	0.4	8	8
25	1.0	12	18
26	0.2	4	14
27	0.2	4	14
28	0.2	4	14
29	0.2	4	14
30	0.2	4	14
31	0.2	4	14
32	0.2	4	14
33	0.2	4	14
34	0.2	4	14
35	0.2	4	14
36	0.2	4	14
37	0.2	4	14
38	0.2	4	14
39	0.2	4	14
40	0.2	4	14
41	0.2	4	14
42	0.2	4	14
43	0.2	4	14
44	0.2	4	14
45	0.2	4	14
46	0.2	4	14
47	0.5	4	14
48	0.3	4	14

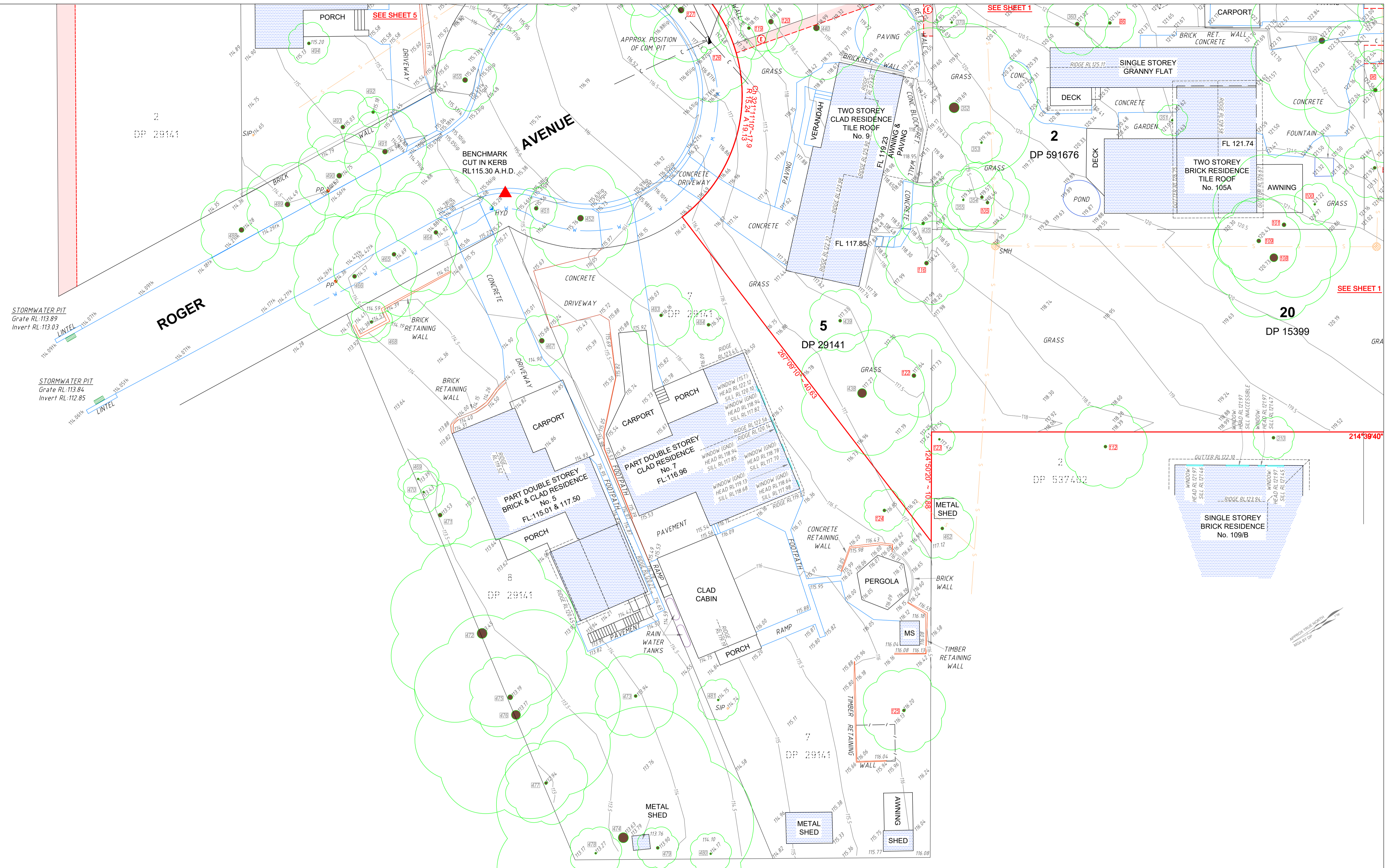
Schedule of Trees			
No.	Diam	Spread	Height
49	0.2	4	14
50	0.4	4	14
51	0.2	4	14
52	0.2	4	14
53	0.2	4	14
54	0.2	4	14
55	0.1	2	3
56	0.2	5	10
58	0.4	10	12
59	0.5	12	14
60	0.4	10	10
61	0.5	10	10
62	0.6	8	16
63	0.5	6	6
64	0.5	12	16
65	0.2	10	12
66			
67	0.3	6	12
68	0.2	6	8
69	0.4	6	8
70			
71			
72	0.5	8	9
73	0.6	8	12
74	0.9	10	24
75	0.6	10	18
76	0.6	14	24
77	1.0	20	26
78	0.4	8	12
79	0.1	4	5
80	0.5	8	10
81	0.2	4	4
82	0.2	4	4
83	0.2	1	6
84	0.2	4	4
85	0.2	4	4
86	0.3	5	5
87			
88	0.3	6	14
89	0.8	14	22
90	0.2	5	7
91	0.3	8	12
92	0.2	7	7
93	0.4	9	15
94	0.7	12	14
95	0.4	14	18
96	0.1	4	7
97			

Schedule of Trees			
No.	Diam	Spread	Height
98			
99	0.3	6	8
100	0.2	4	8
101	0.4	14	18
102			
103			
104			
105	0.3	8	7
106	0.3	10	6
107			
108	0.8	12	18
109	0.4	8	18
110			
111			
112	0.3	8	10
113	0.3	6	10
114	0.2	8	9
115	0.2	8	9
116	0.4	8	10
117	0.5	6	8
118	0.3	4	6
119	0.3	6	8
120	0.5	6	12
121	0.5	6	8
122	0.4	8	8
123	0.2	3	6
124	0.3	4	6
125	0.3	8	6
126	0.6	10	12
127	0.6	10	14
128	0.4	6	10
129	0.5	6	9
OLD TREE NUMBERS (+200)			
203	0.4	8	10
209	0.3	5	14
210	0.4	5	8
211	0.4	6	8
214	0.3	6	7
215	0.3	8	6
216	0.4	12	10
217	0.4	12	10
218	0.4	10	12
219	0.4	10	6
220	0.2	2	3
221	0.3	4	5
223	0.4	8	7
224	0.2	5	6
226	1.0	8	8

Schedule of Trees			
No.	Diam	Spread	Height
227	0.5	6	6
229	0.3	4	3
230	0.3	8	8
231	0.3	5	5
232	0.3	5	4
233	0.3	5	5
234	0.3	5	5
235	0.2	3	4
236	0.2	5	5
237	0.3	4	5
238	0.2	4	4
239	0.2	4	4
240	0.2	4	4
241	0.2	4	4
244	0.2	4	4
248	0.2	4	5
250	0.3	8	9
251	0.3	8	9
253	0.2	8	6
254	0.2	3	5
255	0.1	1	2
256	0.1	1	2
257	0.2	1	2
258	0.1	1	3
259	0.1	1	7
261	0.3	4	5
262	0.2	4	5
263	0.2	4	5
264	0.2	4	5
265	0.2	4	5
266	0.2	4	5
268	0.3	6	8
271	0.4	8	8
272	0.4	8	6
274	0.1	4	6
275	0.2	5	7
276	0.2	5	8
277	0.2	5	6
278	0.2	4	6
279	0.1	2	4
280	0.1	2	4
281	0.2	2	4
282	0.3	2	5
283	0.3	5	8
284	0.3	5	8
285	0.3	5	8
286	0.3	5	8
287	0.2	5	10

Schedule of Trees			
No.	Diam	Spread	Height
288	0.3	5	8
289	0.3	5	8
290	0.3	5	8
291	0.3	5	8
292	0.3	5	8
293	0.3	5	8
294	0.3	5	8
295	0.3	5	8
296	0.3	5	8
298	0.2	4	8
299	0.2	4	8
300	0.3	6	8
301	0.3	6	8
302	0.3	4	5
303	0.2	3	7
310	0.3	4	8
342	0.2	4	14
343	0.3	6	8
344	0.3	6	8
345	0.6	11	16
346	0.3	12	16
347	0.4	10	16
349	0.6	14	24
351	0.2	3	7
352	1.0	16	26
353	0.2	4	6
354	0.3	6	8
355	0.2	6	12
357	0.4	4	4
358	1.0	6	7
360	0.4	6	8
361	0.3	6	9
362	0.4	4	8
363	0.7	7	10
364	0.3	6	8
365	0.2	4	8
366	0.2	4	8
367	0.3	4	4
368	0.3	4	6
369	0.3	4	6
370	0.2	3	3
372	0.3	8	12
374	0.3	6	8
375	0.3	6	8
376	0.3	6	8
377	0.3	6	8
378	0.4	6	10
379	0.3	4	6

Schedule of Trees			
No.	Diam	Spread	Height
384	0.1	3	4
385	0.1	3	4
389	0.2	4	4
390	0.4	5	10
392	0.5	8	13
393	0.3	6	6
400	0.5	14	22
401	0.2	4	12
405	0.5	8	14
407	0.5	12	14
412	0.9	14	20
413	0.8	14	25
414	0.3	10	15
415	0.6	10	12
416	0.3	6	8
417	0.3	6	8
418	0.2	6	5
419	0.2	2	3
421	0.3	6	10
424	0.3	4	6
425	0.6	12	18
426	0.5	12	16
429	0.3	8	8
430	0.1	2	3
431	0.2	3	4
433	0.3	6	10
435	0.3	4	6
438	0.9	12	16
439	0.3	6	8
440	0.6	10	8
448	0.3	4	12



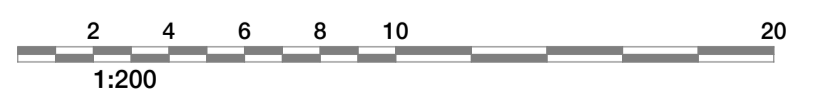
UNDERGROUND SERVICES LEGEND - QUALITY LEVEL D (AS 5488-2013)

W	POTABLE WATER MAIN
R	RECYCLED WATER MAIN
D	STORMWATER PIPE
S	SEWER MAIN
C	COMMUNICATIONS CABLES
E	ELECTRICITY CABLES
G	GAS MAIN
U	UNIDENTIFIED SERVICES

APPROXIMATE POSITION ONLY VIDE 'DIAL-BEFORE-YOU-DIG' PLANS
JOB No. 9689787 WHERE CRITICAL TO DESIGN, UNDERGROUND SERVICES SHOULD BE LOCATED BY MORE ACCURATE METHODS.

CAUTION: FIBRE OPTIC CABLES ARE PRESENT IN THIS AREA

- SERVICES NOTES:-**
- ONLY THOSE SERVICES VISIBLE AT THE TIME OF SURVEY HAVE BEEN LOCATED AND IF SHOWN AS '+' 89.67" ARE QUALITY LEVEL A AS DEFINED BY AS 5488-2013. LEVELS SHOWN ARE SURFACE LEVELS UNLESS NOTED OTHERWISE.
 - UNDERGROUND SERVICES HAVE BEEN PLOTTED FROM 'DIAL-BEFORE-YOU-DIG' PLANS AND ARE QUALITY LEVEL D AS DEFINED BY AS 5488-2013. ALL RELEVANT AUTHORITIES MUST BE CONTRACTED TO DETERMINE THE FULL EXTENT OF SERVICES PRIOR TO ANY PLANNING OR WORKS NEAR THE SITE.



©COPYRIGHT		
SDG is the owner of the copyright subsisting in these drawings, plans, designs and specifications. They must not be used, reproduced or copied in whole or in part without prior written consent of SDG		
ISSUE	DATE	AMENDMENT
A	23/9/15	ORIGINAL ISSUE
B	09/11/15	ORIENTATE TO APPROXIMATE TRUE NORTH
C	22/02/17	EXTRA DETAIL IN ROGER AVE & OLD NORTHERN ROAD ADDED
D	18/22/24	TREE RENUMBERING IN ACCORDANCE WITH ARBORIST

CLIENT:
MERCK PROPERTY PTY LTD

SCALE 1:200
ORIGIN OF LEVELS:
SSM 68502
RL 121.012

DATUM:
A.H.D.

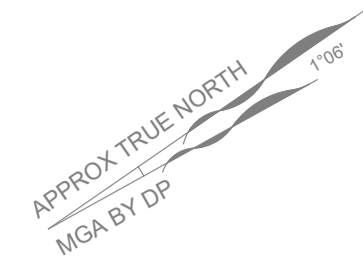
REF.: 6864
DATE: 18/12/2024
SURV/CHK: DG/SW/JR/GE
SHEET 4 OF 6 SHEETS

PLAN
A1
DETAIL AND LEVEL SURVEY OF
93-107 CECIL AVENUE & 9-10 ROGER AVENUE
CASTLE HILL

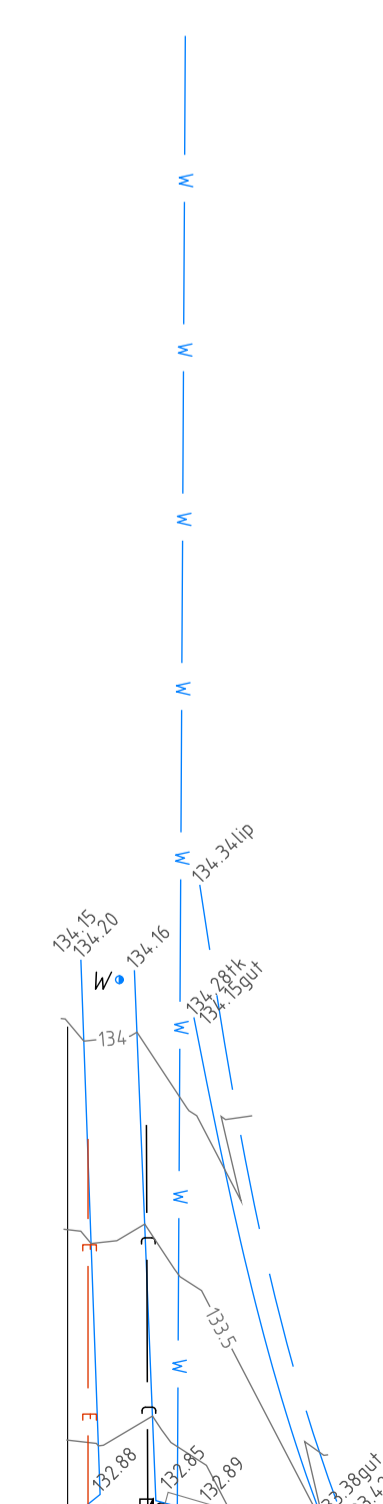
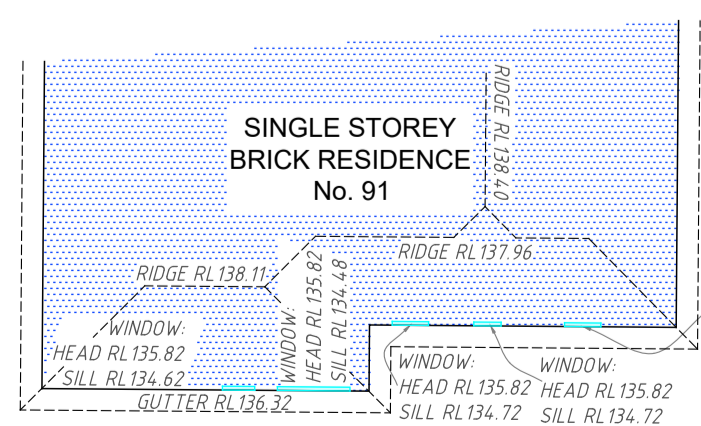
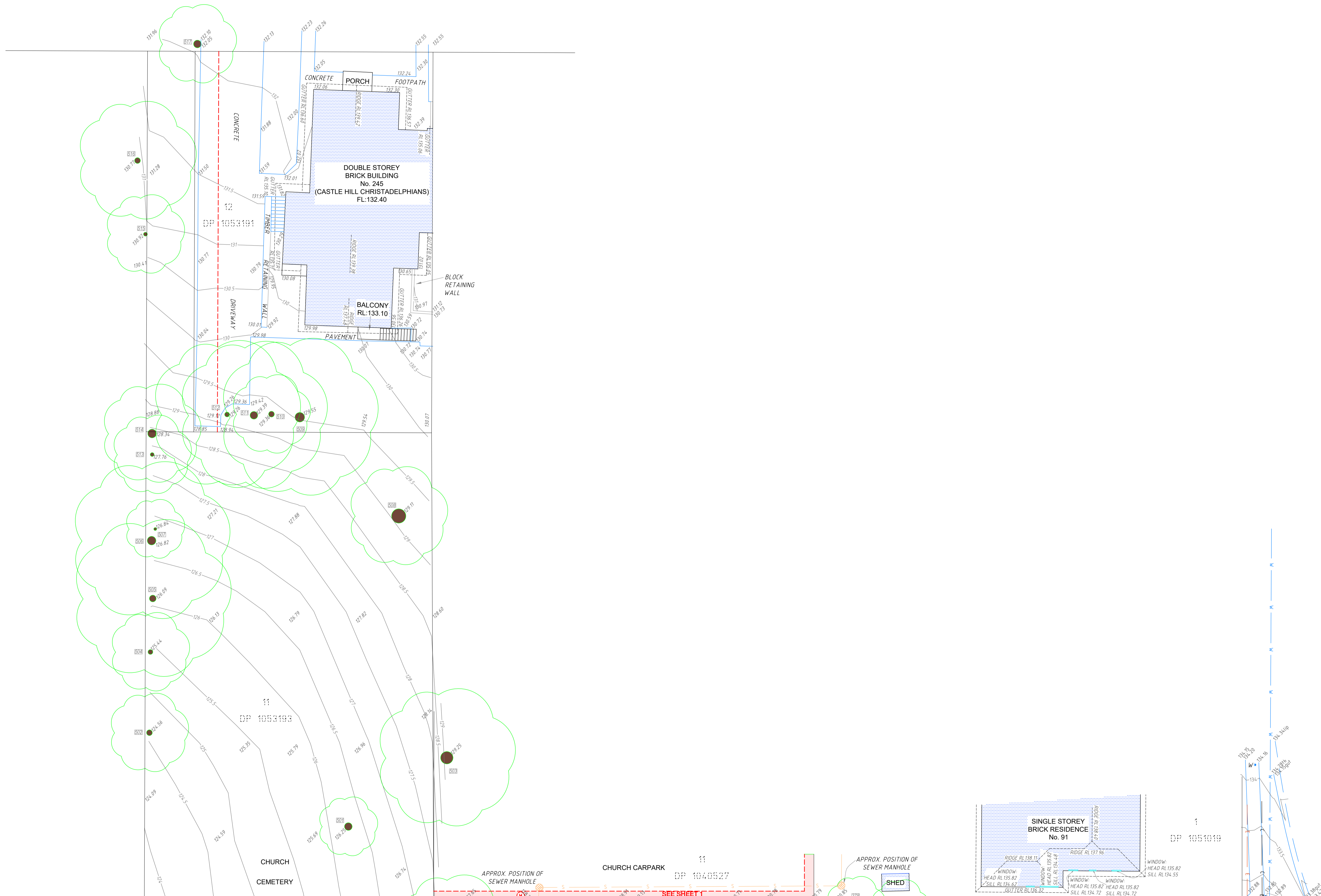
ISSUE
D

SDG
LAND DEVELOPMENT SOLUTIONS
A.B.N. 65 213 523 611

Unit 7 16 Koons Road
NORTHMEAD 2152
P.O. Box 2022
NORTH PARRAMATTA 1750
T: 02 9630 7950
e: office@sdg.net.au
w: www.sdg.net.au



OLD NORTHERN ROAD



©COPYRIGHT
SDG is the owner of the copyright subsisting in these drawings, plans, designs and specifications. They must not be used, reproduced or copied in whole or in part without prior written consent of SDG

ISSUE	DATE	AMENDMENT
A	23/9/15	ORIGINAL ISSUE
B	09/11/15	ORIENTATE TO APPROXIMATE TRUE NORTH
C	22/02/17	EXTRA DETAIL IN ROGER AVE & OLD NORTHERN ROAD ADDED
D	18/22/24	TREE RENUMBERING IN ACCORDANCE WITH ARBORIST

CLIENT:
MERCK PROPERTY PTY LTD

SCALE 1:200
ORIGIN OF LEVELS:
SSM 68502
RL 121.012

DATUM:
A.H.D.

REF.: 6864
DATE: 18/12/2024
SURV/CHK: DG/SW/JR/GE
SHEET 6 OF 6 SHEETS

PLAN A1
ISSUE D
**DETAIL AND LEVEL SURVEY OF
93-107 CECIL AVENUE & 9-10 ROGER AVENUE
CASTLE HILL**

SDG
LAND DEVELOPMENT SOLUTIONS
A.B.N. 65 212 522 011

DIAL BEFORE YOU DIG
1800 100 000

Unit 7 18 Kleins Road
NORTHMEAD 2152
P.O. Box 2022
NORTH PARRAMATTA 1750
t: (02) 9638 7885
e: office@sdg.net.au
w: www.sdg.net.au