





Riparian Corridor

 RIPARIAN CORRIDOR



Existing Trees

 EXISTING TREE
 PROTECTION BOUNDARY



Biodiversity

 BIODIVERSITY



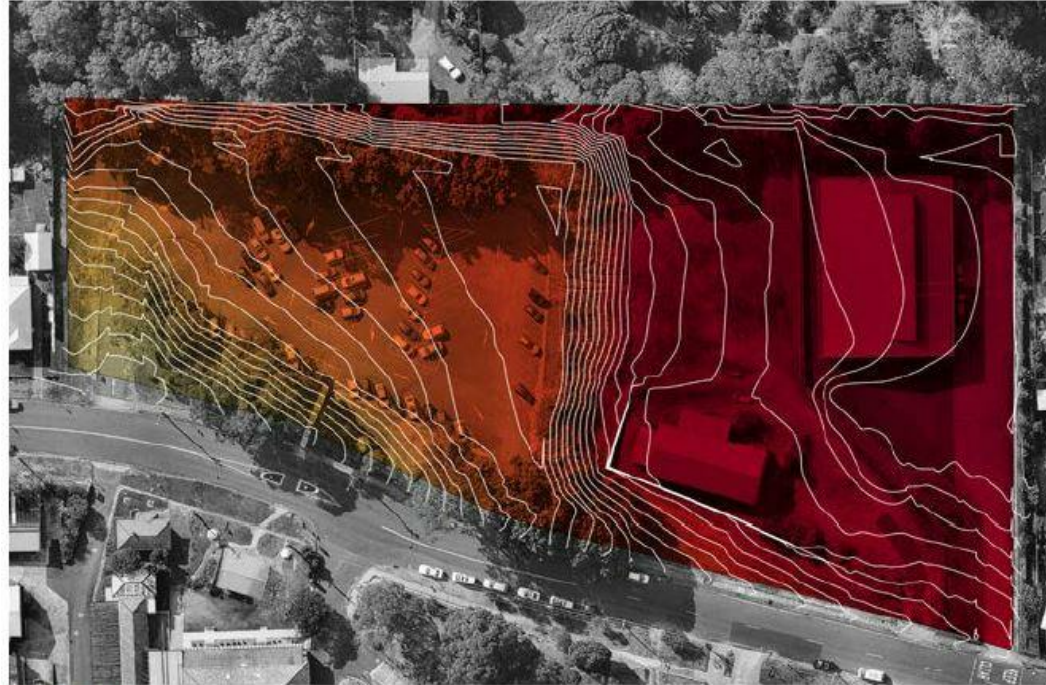
Soil Contamination

 ACID SULFATE SOILS

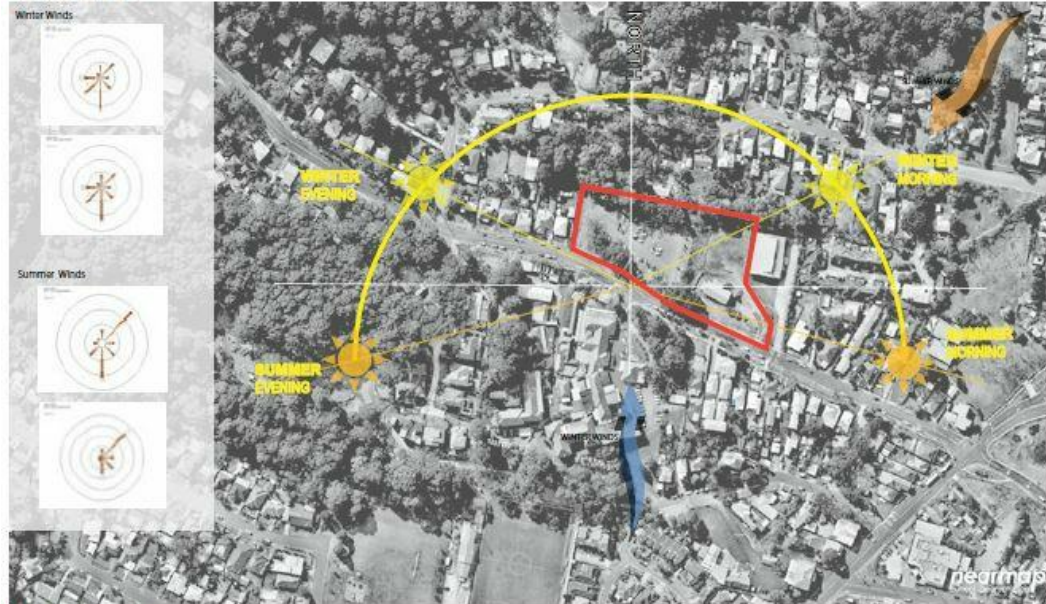


Billard Leece Partnership Pty Ltd
 Architects & Urban Planners
 Level 7/150 Flinders Street
 Melbourne 3000
 Victoria Australia
 T +61 3 9656 5000
 F +61 3 9656 5050
 E info@blp.com.au
 www.blp.com.au

Description SITE ANALYSIS 3	
Project No. 15617	Date 13/02/2017
Scale @A3	
Drawing Number DA.01.0503	Revision C



Topography



Micro-climate



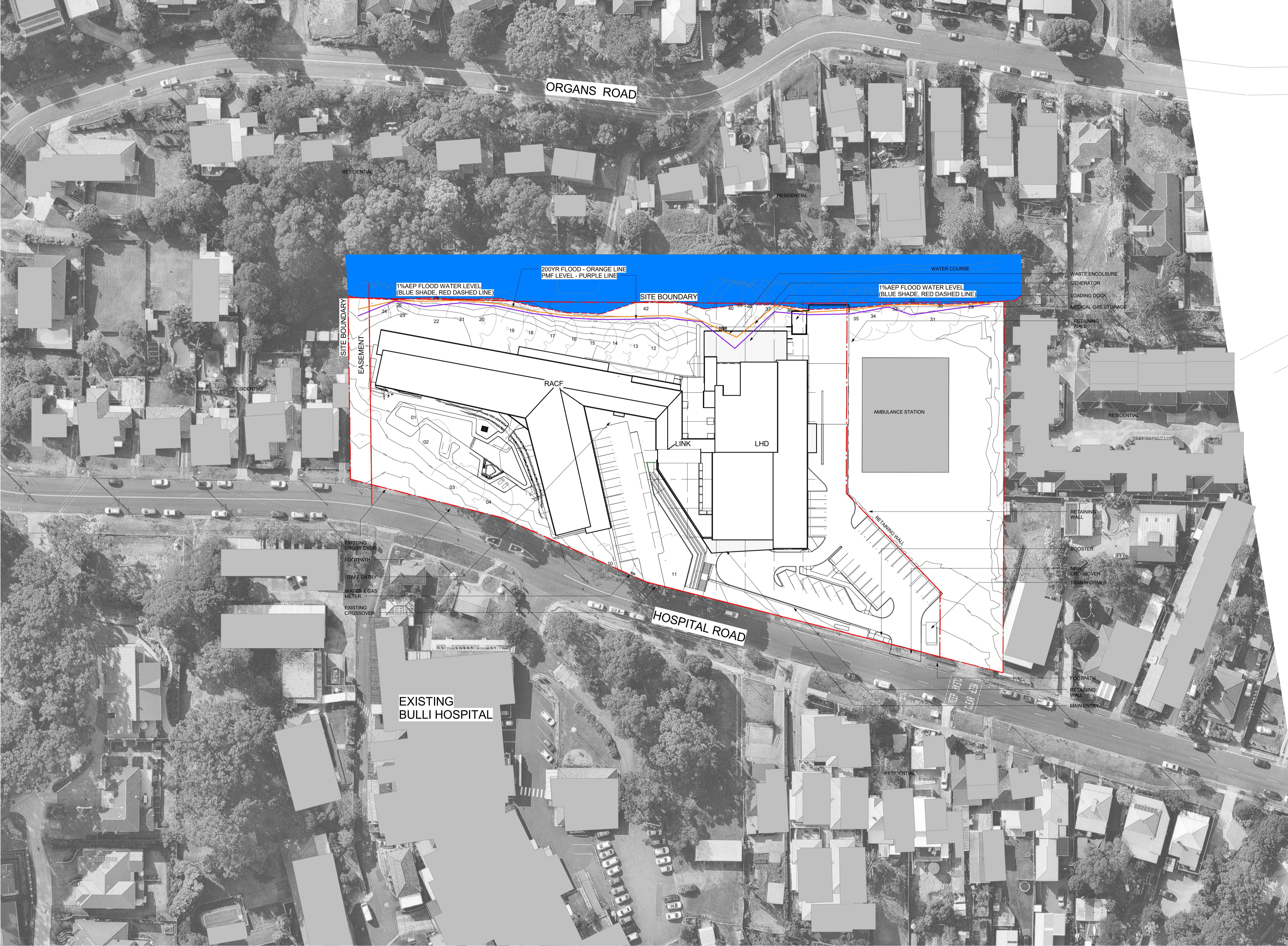
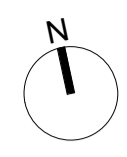
View towards the ocean

Existing Carpark View



Billard Leece Partnership Pty
 Ltd
 Architects & Urban Planners
 Level 7/150 Flinders Street
 Melbourne 3000
 Victoria Australia
 T +61 3 9656 5000
 F +61 3 9656 5050
 E info@blp.com.au
 www.blp.com.au

Description	
SITE ANALYSIS 4	
Project No.	Date
15617	13/02/2017
Scale	
@A3	
Drawing Number	Revision
DA.01.0504	C



C	Final SSD Issue	29/05/2017
B	WATERCOURSE & PMF SHOWN	08/05/2017
	AMBULANCE PARKING SHOWN	
A	FLOOD LEVEL	06/03/2017
REV	PLAN FOR DA	

BP
 Billard Leoco Partnership Pty Ltd
 Architects & Urban Planners
 Studio 201, 50 Holt Street
 Surry Hills 2010
 New South Wales Australia
 T +61 2 8096 4066
 E info@bip.com.au
 www.bip.com.au

NSW Health Infrastructure
 GOVERNMENT
 77 Pacific Highway
 North Sydney
 NSW 2060

P: 02
 F: 02
 W: www.hinfra.health.nsw.gov.au

BULLI AGED CARE CENTRE OF EXCELLENCE

DRAWING TITLE
 FLOOD MAP PLAN -
 1% AEP FLOOD WATER LEVEL

Project No	15617
Scale	1:500@A1
Date	13/02/2017
Drawn By	AJE
Checked By	LG
Drawing No	DA.01.0601
Revision	C

