

PAVEMENT LEGEND

- NOTES**
 1. Asphaltic concrete shall conform to AS2150 and the specification
 2. Pavement based on geotechnical report by Douglas Partners August 2003 (Ref:28227) & 12 April (Ref:28227.03)

- P1** 50mm Thickness asphaltic concrete (AC10) on 130mm Compacted thickness fine crushed rock (DGB20) on 220mm Compacted thickness fine crushed rock (DGS40)
- P2** Planting to Landscape Architects Specifications
- P3** 100mm Thickness concrete (f_c=32MPa) with SL62 fabric (40 top cover) on 100mm Compacted thickness fine crushed rock (DGB 20)
- P4** 180mm Thickness concrete (f_c=32MPa) with SL82 fabric (40 top cover) on 100mm Compacted thickness fine crushed rock (DGB20)
- P5** 120mm Thickness concrete (f_c=32MPa) with SL62 fabric (40 top cover) on 100mm Compacted thickness fine crushed rock (DGB 20)
- P6** Finish to Landscape Architect specifications
- P7** Mill and resheet 50mm thickness asphaltic concrete (AC10)

Electronic: C05.dwg - USER: phillip - Plot File Created: May 16, 2017 - 3:40pm

Rev	Description	Eng	Draft	Date	Rev	Description	Eng	Draft	Date	Rev	Description	Eng	Draft	Date
D	ISSUE FOR TENDER	KH	PW	16.05.17										
C	ISSUE FOR TENDER	KH	PW	13.04.17										
B	ISSUE FOR TENDER	KH	PW	13.03.17										
A	ISSUE FOR TENDER	KH	PW	10.02.16										

Architect
Billard Leece Partnership Pty Ltd
 50 Holt St, Surry Hills NSW 2010

Civil Engineer

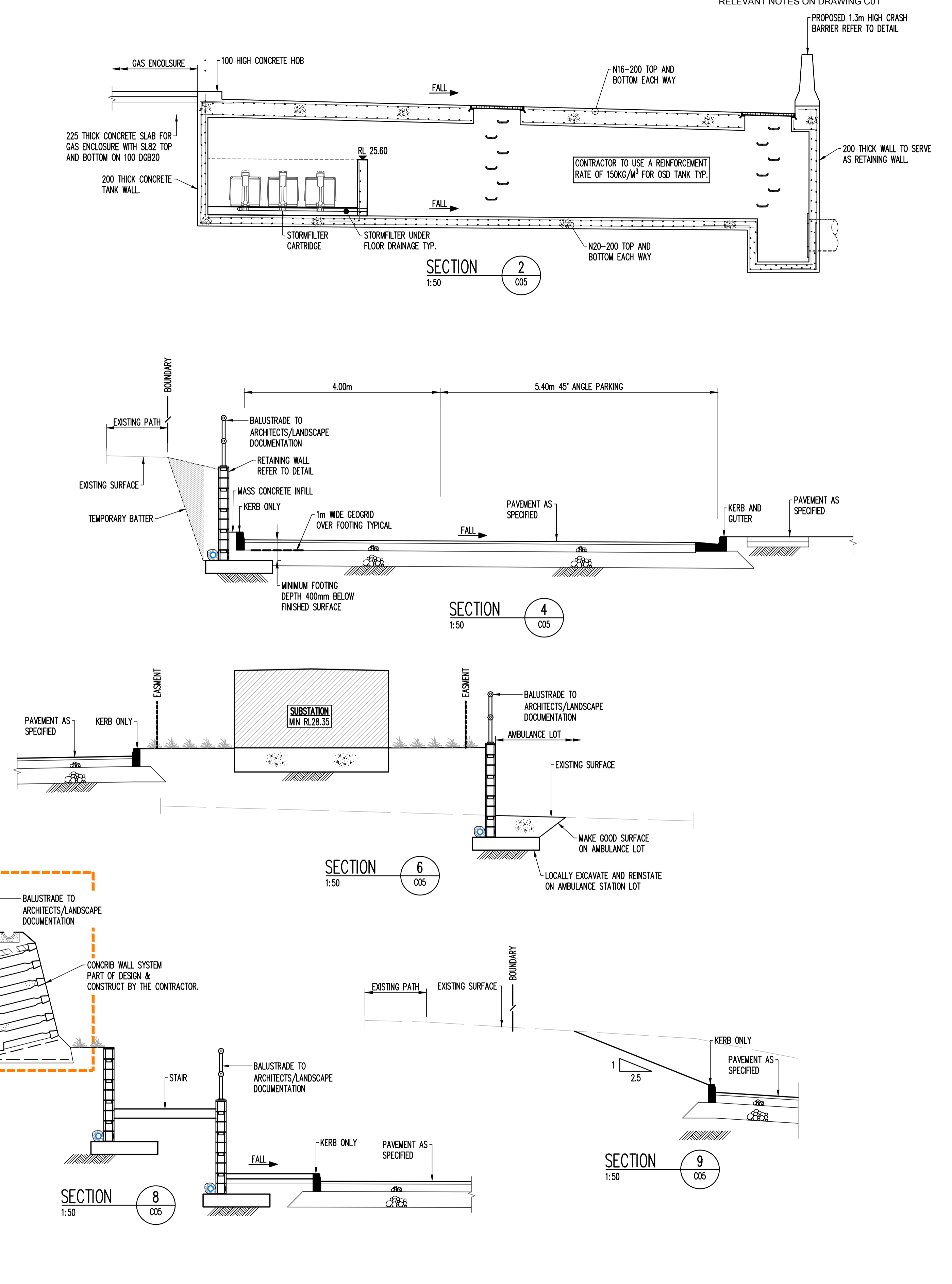
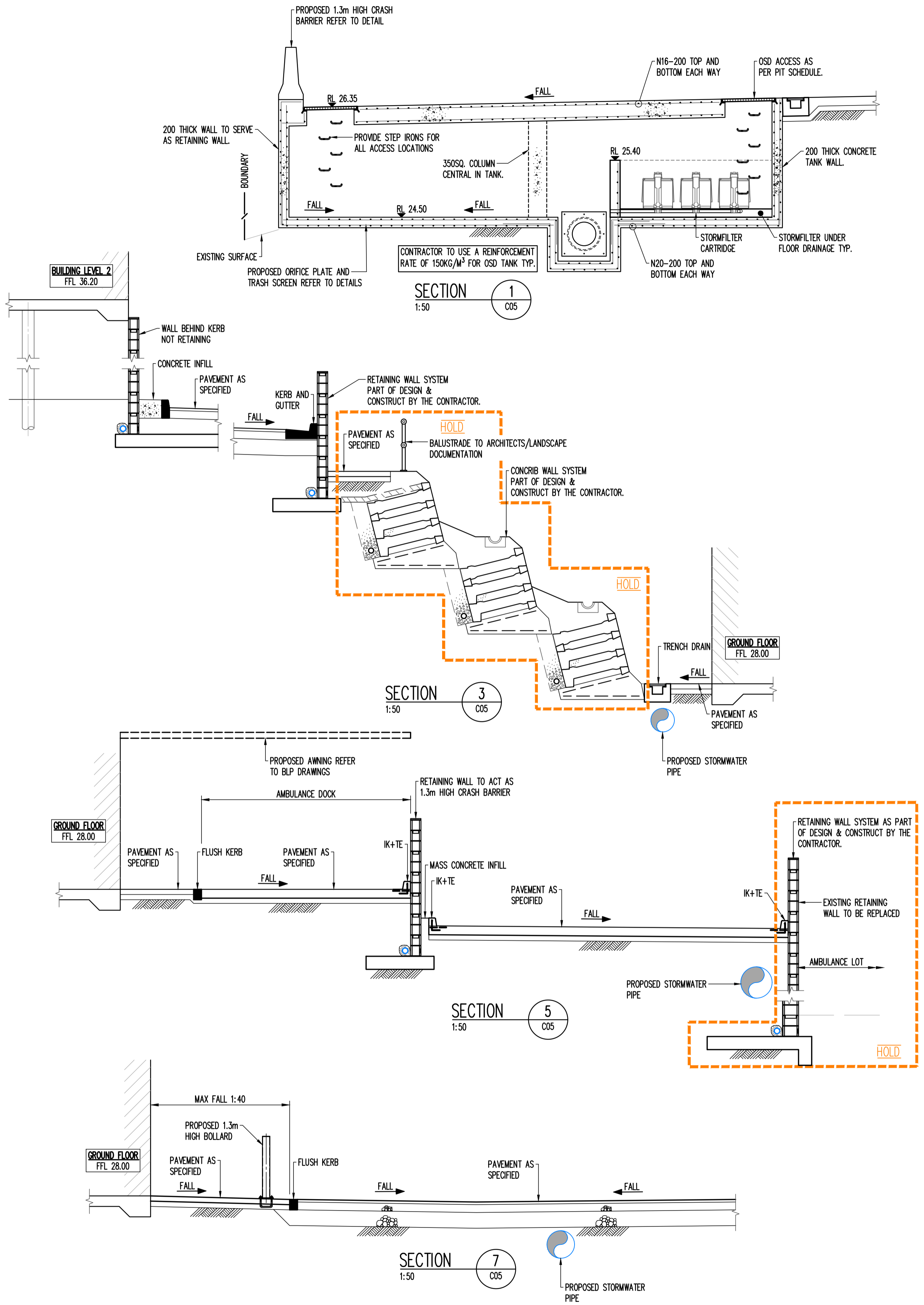
 612 9439 7288 | 48 Chandos Street St Leonards NSW 2065

Project
BULLI AGED CARE CENTRE OF EXCELLENCE

Sheet Subject
SITeworks PLAN

Scale: A1
 1:250
 Drawn
 C.V.
 Authorised

 Job No
151775
 Drawing No
C05
 Revision
D
 Plot File Created: May 16, 2017 - 3:40pm



Reference: C09.dwg - USER: Phillip - Plot File Created: Apr 13, 2017 - 4:55pm

A1	0	1	2	3	4	5	6	7	8	9	10
----	---	---	---	---	---	---	---	---	---	---	----

Rev	Description	Eng	Draft	Date	Rev	Description	Eng	Draft	Date	Rev	Description	Eng	Draft	Date
C	ISSUE FOR TENDER	KH	PW	13.04.17										
B	ISSUE FOR TENDER	KH	PW	13.03.17										
A	ISSUE FOR TENDER	KH	PW	10.02.16										

Architect
Billard Leece Partnership Pty Ltd
 50 Holt St, Surry Hills NSW 2010

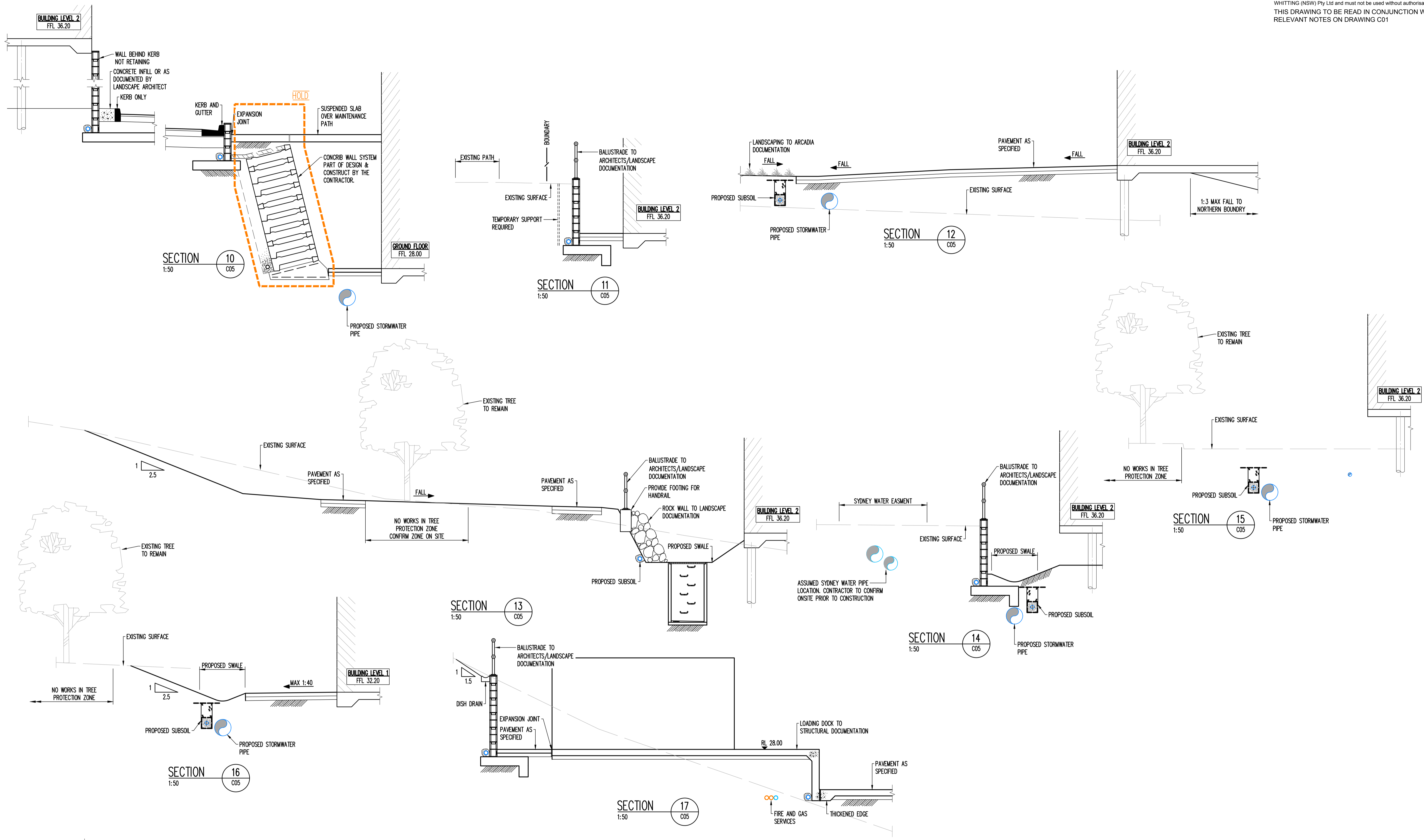
Civil Engineer

 612 9439 7288 | 48 Chandos Street St Leonards NSW 2065

Project
BULLI AGED CARE CENTRE OF EXCELLENCE

Sheet Subject
SECTIONS SHEET 1

Scale: A1	Drawn: AS SHOWN	Authorised: C.V.
Job No: 151775	Drawing No: C09	Revision: C
Plot File Created: Apr 13, 2017 - 4:55pm		



Reference: C01.dwg - USER: Phillip - Plot File Created: Apr 13, 2017 - 4:55pm

A1 0 1 2 3 4 5 6 7 8 9 10

Rev	Description	Eng	Draft	Date	Rev	Description	Eng	Draft	Date	Rev	Description	Eng	Draft	Date
C	ISSUE FOR TENDER	KH	PW	13.04.17										
B	ISSUE FOR TENDER	KH	PW	13.03.17										
A	ISSUE FOR TENDER	KH	PW	10.02.16										

Architect
Billard Leece Partnership Pty Ltd
 50 Holt St, Surry Hills NSW 2010

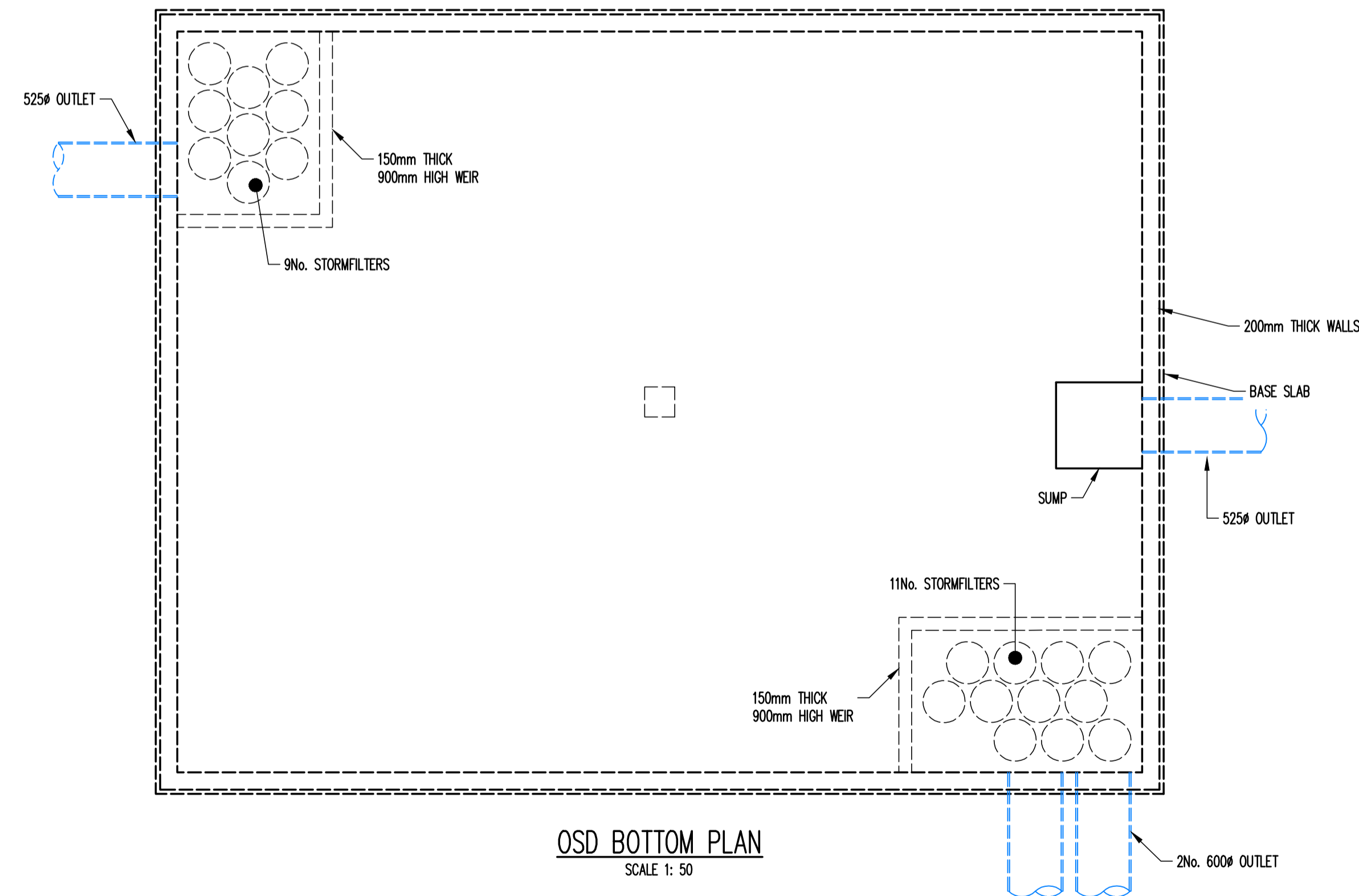
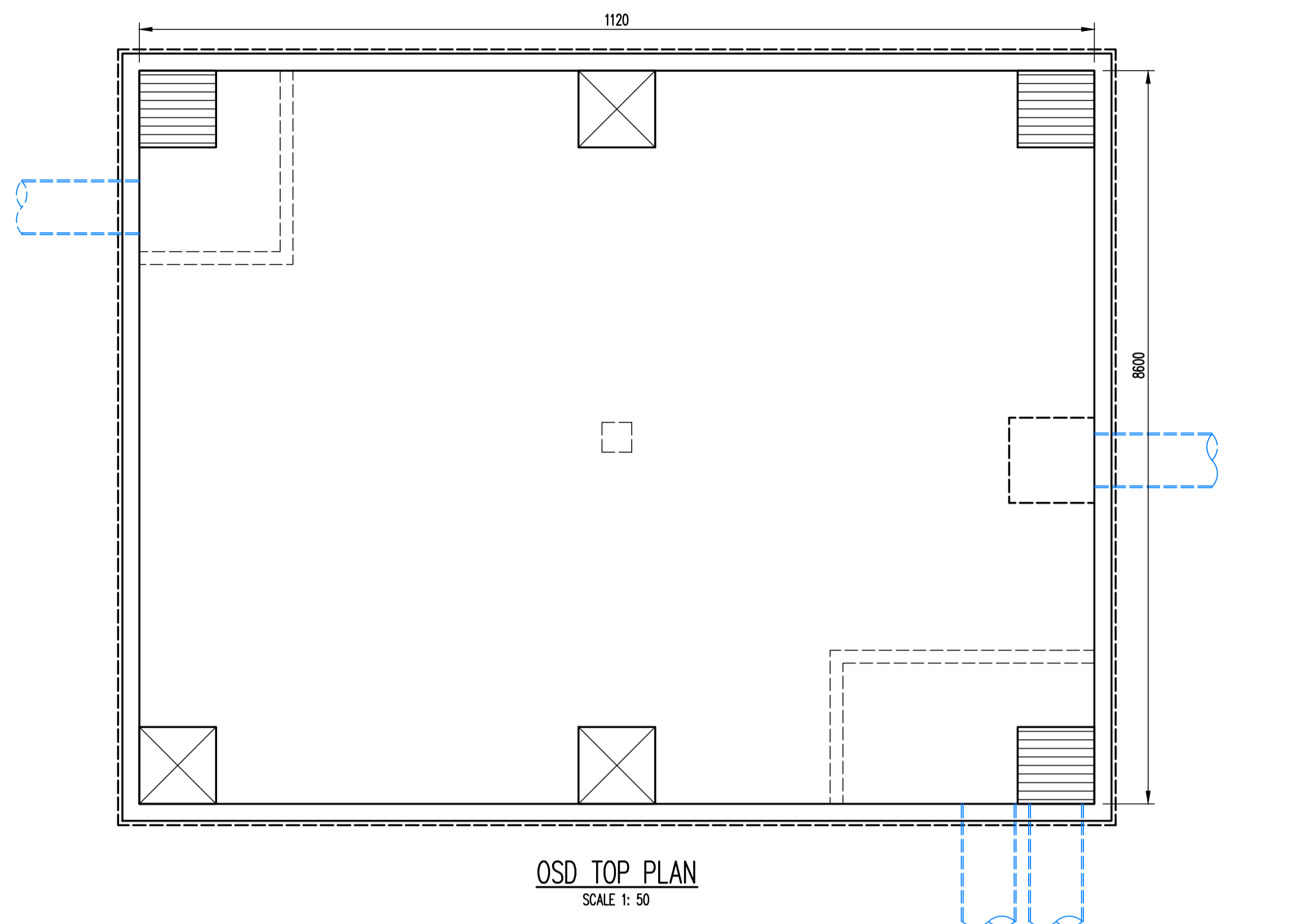
Civil Engineer

 612 9439 7288 | 48 Chandos Street St Leonards NSW 2065

Project
BULLI AGED CARE CENTRE OF EXCELLENCE

Sheet Subject
SECTIONS SHEET 2

Scale : A1	Drawn AS SHOWN	Authorised C.V.
Job No 151775	Drawing No C10	Revision C
Plot File Created: Apr 13, 2017 - 4:55pm		



STORMFILTER DESIGN TABLE			
<ul style="list-style-type: none"> THE SIZE 4.5 x 2.1m STORMFILTER TREATMENT CAPACITY VARIES BY NUMBER OF FILTER CARTRIDGES INSTALLED AND BY REGION SPECIFIC INTERNAL FLOW CONTROLS. THE STANDARD CONFIGURATION IS SHOWN. ACTUAL CONFIGURATION OF THE SPECIFIED STRUCTURE(S) PER CIVIL ENGINEER WILL BE SHOWN ON SUBMITTAL DRAWING(S). ALL PARTS PROVIDED AND INTERNAL ASSEMBLY BY STORMWATER360 UNLESS OTHERWISE NOTED. 			
CARTRIDGE HEIGHT	690	460	310
SYSTEM HYDRAULIC DROP (H - REQ'D. MIN.)	930	700	550
TREATMENT BY MEDIA SURFACE AREA L/S/m ²	1.4	0.7	1.4
CARTRIDGE FLOW RATE (L/s)	1.42	0.71	0.95
		0.47	0.7
			0.63
			0.32

GENERAL NOTES

- INLET AND OUTLET PIPING SHALL BE SPECIFIED BY SITE CIVIL ENGINEER (SEE PLANS) AND PROVIDED BY CONTRACTOR. STORMFILTER IS PROVIDED WITH OPENINGS AT INLET AND OUTLET LOCATIONS.
- IF THE PEAK FLOW RATE, AS DETERMINED BY THE SITE CIVIL ENGINEER, EXCEEDS THE PEAK HYDRAULIC CAPACITY OF THE PRODUCT, AN UPSTREAM BYPASS STRUCTURE IS REQUIRED. PLEASE CONTACT STORMWATER360 FOR OPTIONS.
- THE FILTER CARTRIDGE(S) ARE SIPHON-ACTUATED AND SELF-CLEANING. THE STANDARD DETAIL DRAWING SHOWS THE MAXIMUM NUMBER OF CARTRIDGES. THE ACTUAL NUMBER SHALL BE SPECIFIED BY THE SITE CIVIL ENGINEER ON SITE PLANS OR IN DATA TABLE BELOW. CONCRETE STRUCTURE TO BE PROVIDED BY OTHERS.
- SEE STORMFILTER DESIGN TABLE FOR REQUIRED HYDRAULIC DROP. FOR SHALLOW LOW DROP OR SPECIAL DESIGN CONSTRAINTS, CONTACT STORMWATER360 FOR DESIGN OPTIONS.
- ALL WATER QUALITY PRODUCTS REQUIRE PERIODIC MAINTENANCE AS OUTLINED IN THE O&M GUIDELINES. PROVIDE MINIMUM CLEARANCE FOR MAINTENANCE ACCESS.
- STRUCTURE AND ACCESS COVERS DESIGNED BY OTHERS. ACCESS COVERS TO BE A MINIMUM 900X900 ABOVE CARTRIDGES.
- THE STRUCTURE THICKNESSES SHOWN ARE FOR REPRESENTATIONAL PURPOSES AND VARY REGIONALLY.
- ANY BACKFILL DEPTH, SUB-BASE, AND/OR ANTI-FLOTATION PROVISIONS ARE SITE-SPECIFIC DESIGN CONSIDERATIONS AND SHALL BE SPECIFIED BY SITE CIVIL ENGINEER.
- CARTRIDGE HEIGHT AND ASSOCIATED DESIGN PARAMETERS PER STORMFILTER DESIGN TABLE.
- STORMFILTER BY STORMWATER360. SYDNEY (AU) PHONE: 1300 354 722 www.stormwater360.com.au

PLAN LAYOUT

SECTION

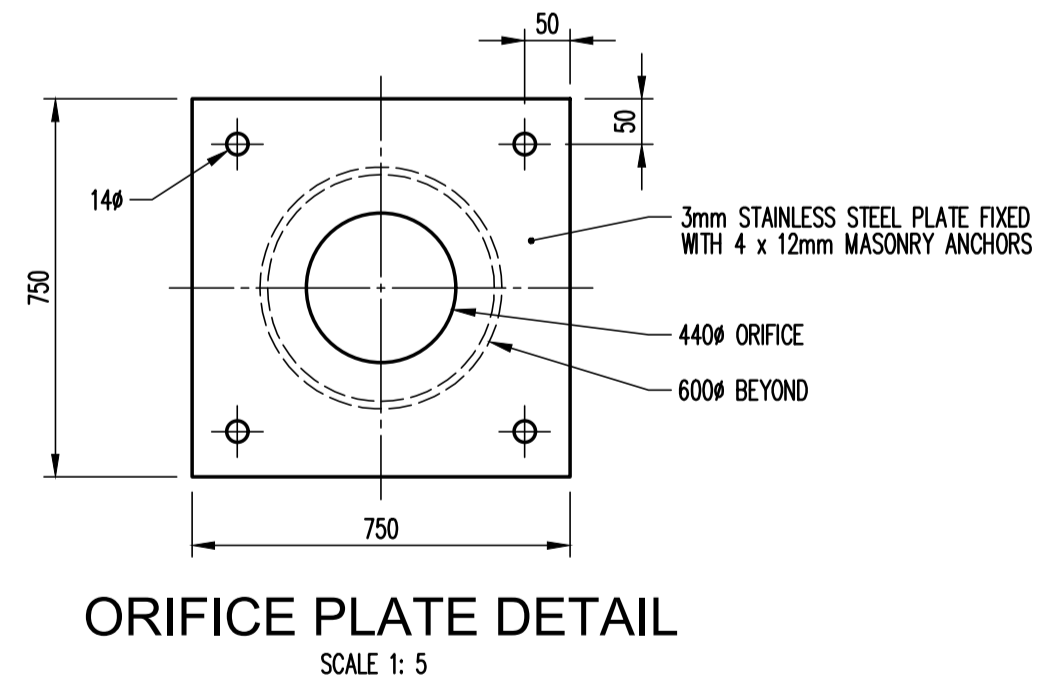
STORMFILTER CARTRIDGE DETAIL

SITE SPECIFIC DATA REQUIREMENTS			
STRUCTURE ID			XXX
WATER QUALITY FLOW RATE (L/S)			XXX
PEAK FLOW RATE (L/S)			XXX
RETURN PERIOD OF PEAK FLOW (yrs)			XXX
# OF CARTRIDGES REQUIRED			XXX
CARTRIDGE HEIGHT (310, 460 or 690mm)			690
MEDIA TYPE (PERLITE, PERLITE/ZEOLITE OR ZPS)			XXX
PRECAST VAULT WEIGHT			- kg
PRECAST LID WEIGHT			- kg
PIPE DATA:	1L	MATERIAL	DIAMETER
INLET PIPE #1	XXX		XXX
INLET PIPE #2	XXX		XXX
OUTLET PIPE	XXX		XXX
RIM RLs			
UPSTREAM			DOWNSTREAM
XXX			XXX
LADDER		YES/NO	
ANTI-FLOTATION BALLAST	XXX	XXX	XXX
NOTES/SPECIAL REQUIREMENTS:			

Stormwater360

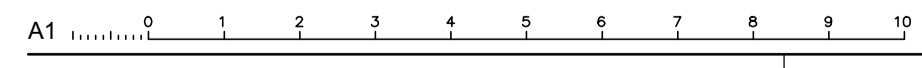
STORMWATER360
STORMFILTER DETENTION TANK
20 CARTRIDGE STORMFILTER SYSTEM
FIRST FLUSH GENERAL ARRANGEMENT

DATE: 23.11.11 FILE NAME: 20C-DET-TANK-STD-690 DRN R.P. CHR: M.W.



CONTRACTOR TO ALLOW FOR A REINFORCEMENT RATE OF 150KG/m³ FOR THE OSD TANK

Reference: C11.dwg - USES: Phillip - Ref: File Created: Apr 13, 2017 - 4:56pm



Rev	Description	Eng	Draft	Date	Rev	Description	Eng	Draft	Date	Rev	Description	Eng	Draft	Date
C	ISSUE FOR TENDER	KH	PW	13.04.17										
B	ISSUE FOR TENDER	KH	PW	13.03.17										
A	ISSUE FOR TENDER	KH	PW	10.02.16										

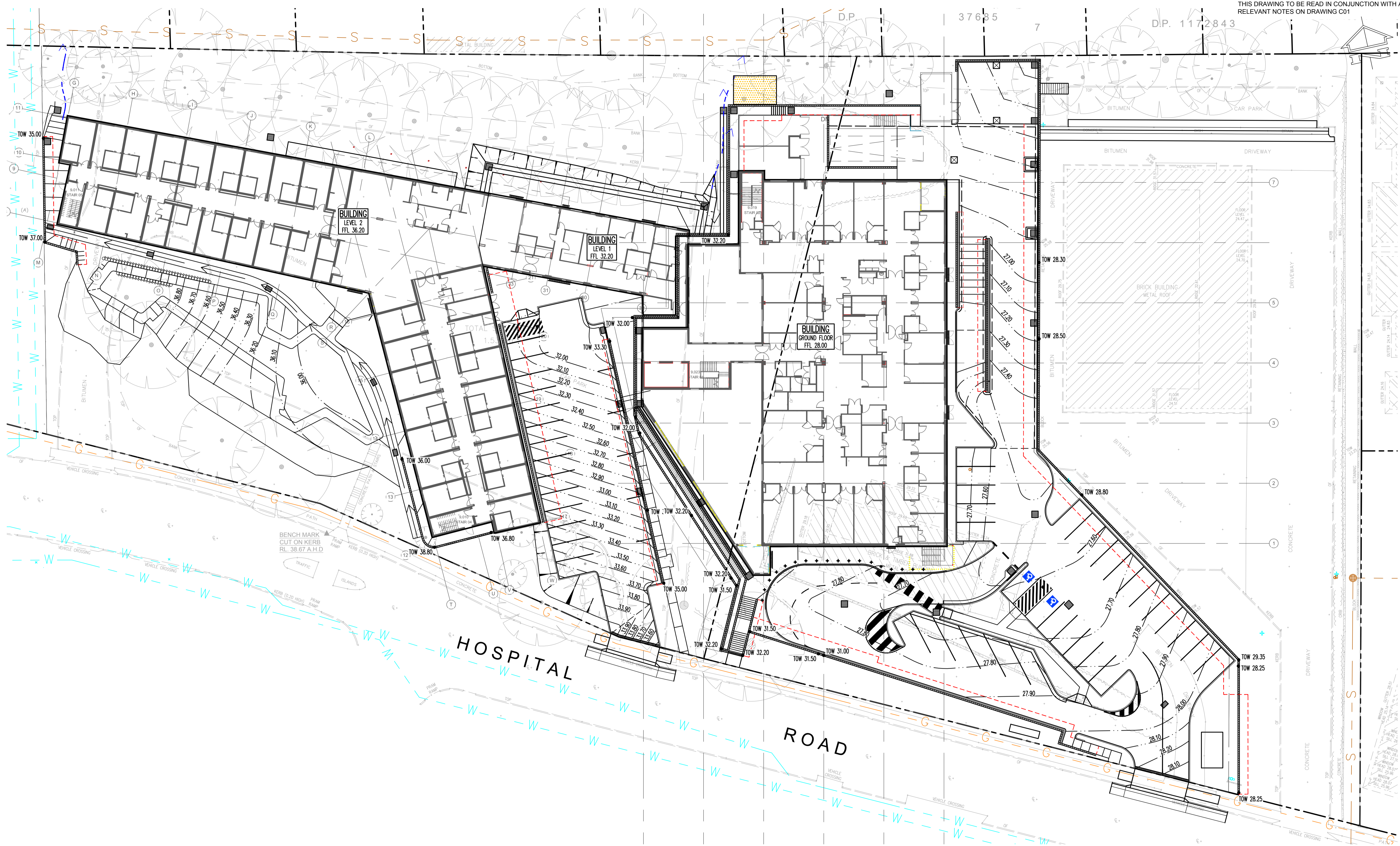
Architect
Billard Leece Partnership Pty Ltd
50 Holt St, Surry Hills NSW 2010

Civil Engineer
TTW Taylor Thomson Whitting
612 9439 7288 | 48 Chandos Street St Leonards NSW 2065

Project
BULLI AGED CARE CENTRE OF EXCELLENCE

Sheet Subject
OSD TANK DETAILS

Scale	Drawn	Authorised
A1	C.V.	
AS SHOWN		
Job No	Drawing No	Revision
151775	C11	C
Plot File Created: Apr 13, 2017 - 4:56pm		



Reference: C12.dwg - USER: Phillip - Plot File Created: Apr 13, 2017 - 5:28pm

A1 0 1 2 3 4 5 6 7 8 9 10

Rev	Description	Eng	Draft	Date	Rev	Description	Eng	Draft	Date	Rev	Description	Eng	Draft	Date
C	ISSUE FOR TENDER	KH	PW	13.04.17										
B	ISSUE FOR TENDER	KH	PW	13.03.17										
A	ISSUE FOR TENDER	KH	PW	10.02.16										

Architect
Billard Leece Partnership Pty Ltd
 50 Holt St, Surry Hills NSW 2010

Civil Engineer

 612 9439 7288 | 48 Chandos Street St Leonards NSW 2065

Project
BULLI AGED CARE CENTRE OF EXCELLENCE

Sheet Subject
RETAINING WALL PLAN

Scale: A1
 1:250
 Drawn: C.V.
 Authorised:

Job No: 151775
 Drawing No: C12
 Revision: C

Plot File Created: Apr 13, 2017 - 5:28pm

