

INSTALLATION MANUAL

AtlanFilter

(Formerly SPELFilter)



CONTENTS

Introduction	03
Vault Types	03
Install Prerequisites	03
Health & Safety	04
Materials Required	05
Installation	06
Install Examples	07



INTRODUCTION

Understanding how to correctly and safely install the AtlanFilter (formerly SPELFilter) is essential for the preservation of the filter's condition and its operational effectiveness.

The AtlanFilter is a highly engineered Stormwater filtration device designed to remove fine sediments, heavy metals, nitrogen and phosphorus from stormwater runoff.

The AtlanFilter relies on a spiral wound media filter cartridge. The Filters can be housed in either a concrete or fiberglass structure that evenly distributes the flow between cartridges. Flow through the filter cartridges is gravity driven and self-regulating, which makes the AtlanFilter system a low maintenance, high performance stormwater treatment device.

This manual will provide the necessary steps that are to be taken to correctly and efficiently install the AtlanFilter product.

VAULT TYPES

There are three vault types, which the AtlanFilter can be installed into:

1. Precast vault: Monolithically poured concrete vault (base and walls).
2. Cast in place vault: Custom designed for site.
3. Fiberglass vault: Must be made by an approved supplier.



FIGURE 2 AtlanFilter install

INSTALL PRE-REQUISITES

- Vault must be clean from all debris, etc.
- Vault must be easily accessible.
- 900 x 900mm lid must be installed correctly and operational.
- Structure of the tank must be safe and hazard free.

HEALTH & SAFETY

PERSONAL HEALTH & SAFETY

When carrying out the necessary installation operations of the AtlanFilter all contractors and staff personnel must comply with all current workplace health and safety legislation.

The below measures should be adhered to as practically as possible.

- Comply with all applicable laws, regulations and standards.
- All those involved are informed and understand their obligations in respect of the workplace health and safety legislation.
- Ensure responsibility is accepted by all employees to practice and promote a safe and healthy work environment.



FIGURE 3 Safety materials

PERSONAL PROTECTIVE EQUIPMENT/SAFETY EQUIPMENT

When carrying out the necessary installation operations of the AtlanFilter, wearing the appropriate personal protective equipment and utilising the adequate safety equipment is vital to reducing potential hazards.



Personal protective equipment/safety equipment in this application includes:

- Eye protection
- Safety apron
- Fluorescent safety vest
- Form of skin protection
- Puncture resistant gloves
- Steel capped safety boots
- Ear muffs
- Hard hat/s
- Sunscreen

IF CLASSED AS CONFINED SPACE

- Harness
- Gas detector
- Tripod
- Spotter

MATERIALS REQUIRED

MATERIALS REQUIRED TO INSTALL ATLANFILTERS

When installing the AtlanFilter, having the necessary tools and equipment is vital to an efficient and effective installation process.

Manifold pipework is to be supplied by plumber or on-site contractor.

Tools that will be required include:

- PVC pipe primer
- PVC pipe cement
- Hammer drill
- Hammer
- Hole saw
- Battery/power drill
- Hack saw
- Ratchet kit
- Shovel
- Tripod
- Winch/chain block for lowering Filters into vault
- Ladder
- Sikaflex gun

Items/products that will be included:

- AtlanFilter/s
- Weir wall & fixings
- Energy dissipater (if required)
- Pipework & fittings
- Fixings
- Anti-floatation brackets



FIGURE 4 AtlanFilter install set-up

INSTALLATION

AtlanFilter installation procedures may vary depending on the configuration of the AtlanFilters, the type of vault and engineers specs. Installation instructions for manhole AtlanFilter systems and precast vault AtlanFilter systems are contained in this section.

Custom AtlanFilter systems may have particular installation issues that will be addressed during the design.

INSTALLATION OF A ATLAN FILTER SYSTEM PROCEDURE

1. Implement pre-start safety measures.

Ensure that the area in which operational works are to be carried out is cordoned off, to prevent unauthorised access. Adequate safety barriers must be erected. Area in which work is to be carried out must be clean, safe and hazard free. (Refer to figure 4.)

2. Set-up gantry tripod above manhole.

Assemble and position the gantry above the manhole safely and as practically as possible. Attach the winch or chain block to the gantry for lifting the Atlan Filters. Perform safety procedures ie. Attach harnesses etc. (if confined space).

3. Open manhole lid.

Once you have sent up the Gantry and ensured that the area is safe to operate in, you can proceed to open the manhole lid, using lid lifters.

4. Conduct gas tests (If tank is classed confined space).

Once the lids have been removed to a safe distance to prevent tripping, you must then proceed to conduct gas tests. Perform necessary gas tests according to the confined space regulations.

5. Once confined space has been deemed safe to operate in, enter tank safely.

Once you have carried out the required gas test and the work area is deemed safe, you may then enter the pit via a ladder or winch system to assess the work area you will be operating in. Ensure all confined space procedures are followed.

6. Set up weir wall over outlet pipe and energy dissipater over inlet pipe (if required).

When installing the weir wall you must ensure that it is securely bolted to the tank wall and completely sealed. Centre the aluminium weir over the outlet pipe and fix weir to tank wall with the supplied fixings. Then use Sikaflex to seal around the edge of the weir and filter outlet pipework.

7. Install pipework and AtlanFilters.

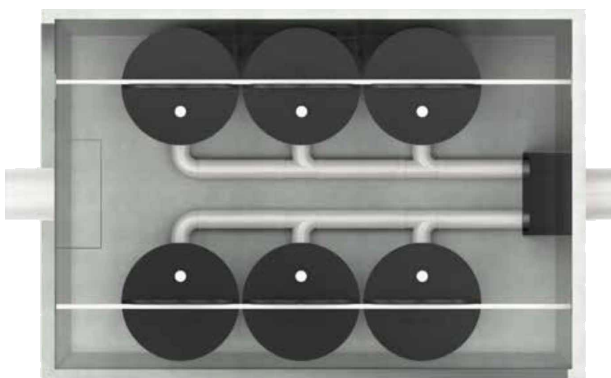
Please refer to the below standard install diagrams for the Atlan Filters. Then refer to your site specific drawings, as site requirements may require something different to the standard layout. Lower filters into tank, position into place, connect filter outlet pipework with the supplied fittings.

8. Install anti-floatation bars.

Please refer to the detailed drawings showing how the anti-floatation (Anchor) bars are to be installed.

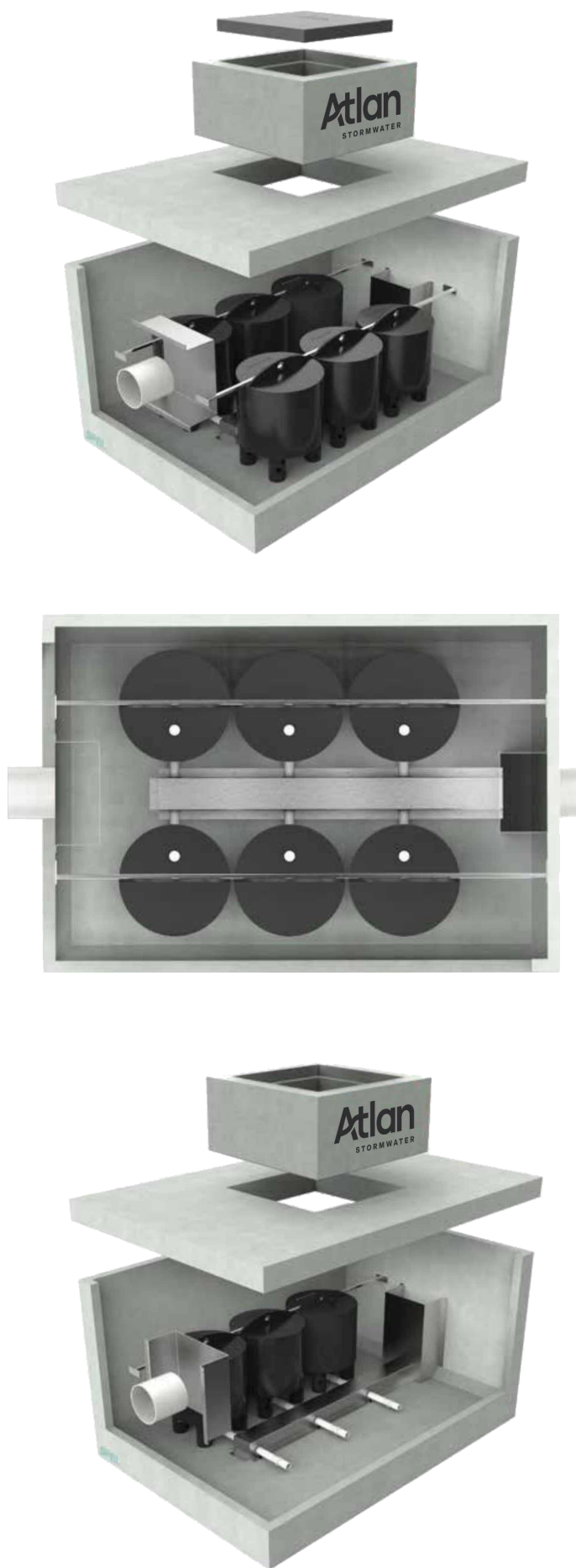
INSTALL EXAMPLES

FIGURE 5
Standard install with PVC Outlet pipework



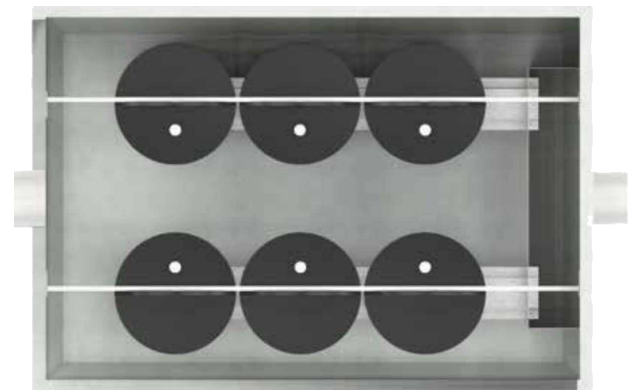
INSTALL EXAMPLES

FIGURE 6 Standard install with Channel system Outlet pipework (1)



INSTALL EXAMPLES

FIGURE 7 Standard install with Channel system Outlet pipework (2)



INSTALLATION MANUAL

AtlanFilter



<p>NSW HEAD OFFICE 100 Silverwater Rd, Silverwater NSW 2128 PO Box 7138, Silverwater NSW 1811 P: +61 2 8705 0255 P: 1300 773 500 nsw.sales@atlan.com.au</p>	<p>QLD MAIN OFFICE 130 Sandstone Pl, Parkinson QLD 4115 P: +61 7 3271 6960 P: 1300 773 500 qld.sales@atlan.com.au</p>	<p>VIC & TAS OFFICE 897 Wellington Rd Rowville VIC 3178 P: +61 3 5274 1336 P: 1800 810 139 sales@atlan.com.au</p> <p>VIC GEELONG BRANCH 70 Technology Close, Corio VIC</p>
<p>SA OFFICE 9 Hampden Road, Mount Barker SA 5251 P: 1300 773 500 sales@atlan.com.au</p>	<p>QLD SUNSHINE COAST BRANCH 19-27 Fred Chaplin Cct, Bells Creek, QLD 4551 P: 1300 773 500 qld.sales@atlan.com.au</p>	<p>WA OFFICE P: +61 8 9350 1000 P: 1800 335 550 sales@atlan.com.au</p>
<p>NZ OFFICE WANGANUI 43 Heads Road Wanganu New Zealand P: +64 6 349 0088 sales@atlan.com.au atlan.co.nz</p>	<p>NZ OFFICE WELLINGTON 41 Raiha St Porirua Wellington New Zealand P: +64 4 239 6006 sales@atlan.com.au atlan.co.nz</p>	<p>NZ OFFICE AUCKLAND 100 Montgomerie Road Airport Oaks P: +64 9 276 9045 sales@atlan.com.au atlan.co.nz</p>

Joy in water

'We believe clean waterways are a right not a privilege and we work to ensure a Joy in Water experience for you, with your children and grandchildren.'

Andy Hornbuckle

OPERATION & MAINTENANCE MANUAL

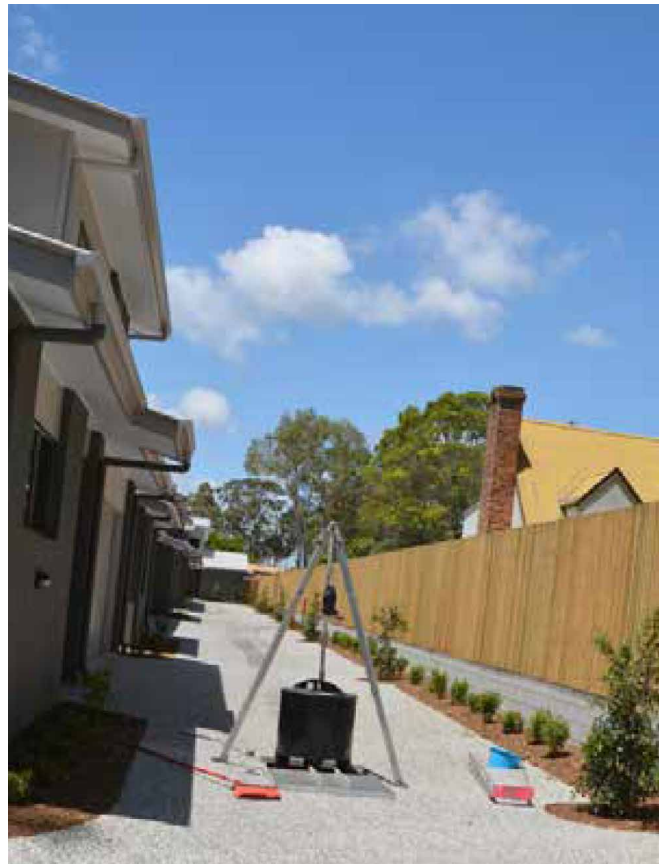
AtlanFilter

(Formerly SPELFilter)



CONTENTS

Introduction.....	3
Features.....	4
Sizes.....	6
System Configuration.....	7
Health and Safety.....	8
Maintenance frequency.....	10
Maintenance Procedure.....	11
General Cleaning.....	12
Cartridge Recycling and Replacement	13
Standard Drawings	14
Site Exit and Clean Up	16



INTRODUCTION

Understanding how to correctly and safely maintain the AtlanFilter (formerly SPELFilter) is essential for the preservation of the filter's condition and its operational effectiveness. The AtlanFilter is a highly engineered stormwater filtration device designed to remove sediments, heavy metals, nitrogen and phosphorus from stormwater runoff.

The filters can be housed in either a concrete or fibreglass structure that evenly distributes the flow between cartridges.

Flow through the filter cartridges is gravity driven and self-regulating, which makes the AtlanFilter system a low maintenance, high performance stormwater treatment device.

This guide will provide the necessary steps that are to be taken to correctly and efficiently ensure the life of the AtlanFilter product.



Figure 1 - AtlanFilters in a concrete chamber / vault

FEATURES

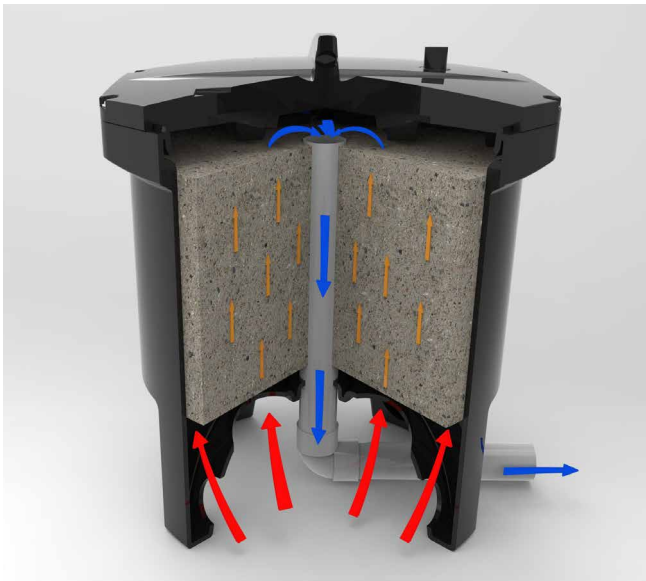


Figure 2 - Diagram of water flow through AtlanFilter

The AtlanFilter has a patented design that facilitates influent flow over the entire surface area of the media, providing consistent pollutant removal within a small footprint.

The AtlanFilter provides highly effective media filtration using gravity flow conditions, without the need for moving parts or floating valves. This eliminates the risk of mechanical failure, such as stuck valves and seizing components during its service life. This provides highly robust treatment performance.

Hydraulic head provided by a suitably sized weir in the filter vault forces stormwater through the filter media via the inlet ports underneath the filter cartridge.

Refer to the table below for minimum head required for the AtlanFilter cartridges to assist in sizing the weir.

The water to be treated enters the AtlanFilter cartridge via an upwards direction as the water level builds up around the AtlanFilter. This 'up flow' reduces the amount of sediment that could enter the media cartridge, as the sediment is allowed to drop to the vault floor under gravity. Any remaining sediment in the water is introduced through the filter media under hydraulic pressure and is filtered.

Water is filtered through the media, where dissolved and particulate Total Nitrogen and Total Phosphorus are removed via reaction with the media, in addition to the removal of Total Suspended Solids / sediment.

AtlanFilter Media Self-Backwash feature

A one-way air release valve located at the top of the filter cartridge allows air to escape as the cartridge fills up with water. This creates a siphonic flow condition as the air is completely evacuated from inside the AtlanFilter cartridge. Siphonic flow conditions are maintained until such time the water level outside of the cartridge falls beneath the inlet ports underneath the filter. At this moment, the water level inside the AtlanFilter cartridge is higher than the surrounding water level.

The water inside the AtlanFilter cartridge is then expelled upon the break of the siphon, and the water flows down and out of the inlet ports under gravity, onto the vault floor.

This is a highly effective backwash of the media and allows the expulsion of a high proportion of sediment out from the AtlanFilter media. The expelled sediment can be removed either manually or with a vacuum from the vault floor.

This backwash effect allows the media to remain highly conductive and is the key to the industry leading longevity of the AtlanFilter cartridge system, which does not need replacement for at least 5 years, and typically will achieve up to 6-8 years of service, subject to the AtlanFilter being regularly maintained in accordance with this guideline and in accordance with the specific needs of the catchment.



Figure 3 - Typical Outlet Weir Wall

FEATURES

Self Supporting Feet

Each AtlanFilter cartridge stands on 4 feet, which negates the need for the construction of a false floor in the vault. The feet are bolted to the vault floor with the supplied stainless steel angles and M10 bolts. The feet allow a clear height from the vault floor up to the inlet ports of 240mm. The absence of a false floor allows plenty of room for backwashed sediment to evacuate from underneath the cartridges and thereby avoid blocking the inlet ports to the AtlanFilter from sediment buildup. It is for this reason that Atlan recommended the sediment buildup not exceed 150mm above the vault floor, so as to avoid blocking the inlet ports of the AtlanFilter. Blockage of the inlet ports due to sediment accumulation in the vault floor will cause the AtlanFilter to go into bypass and be ineffective. Hence it is important to keep up to date with monitoring and maintaining the AtlanFilter vault.



Figure 4 - Bolting the feet.

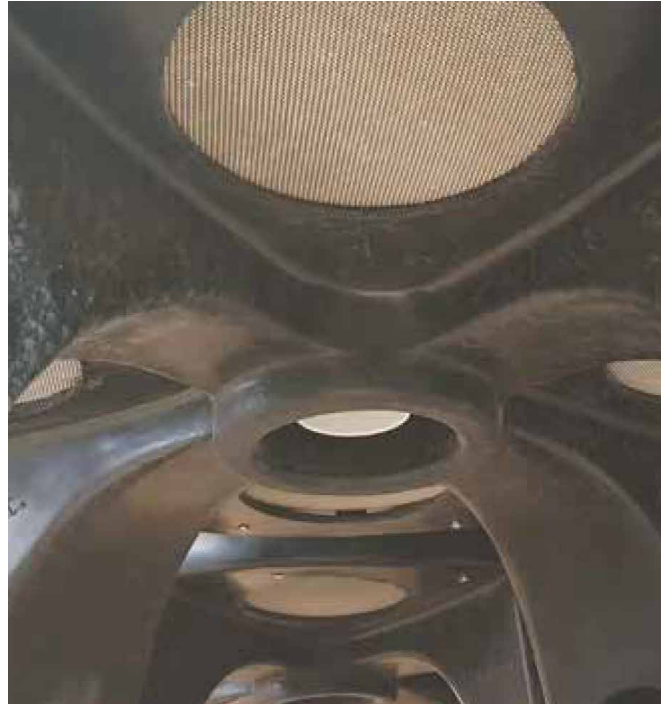


Figure 5 - Underside of the AtlanFilter showing the screened inlet ports and the connection for the outlet pipe in the middle.



Figure 6 - the top of the AtlanFilter showing the location of the one way air valve.

SIZES

Atlan Stormwater manufactures two height cartridges for varying site constraints as shown below. Each cartridge is designed to treat stormwater at a flow rate of 1.5 litres per second and 3.0 litres per second for the half height cartridge (model no. FIL-1.5) and full-height cartridge (model no. FIL-3.0) respectively.

	Full Height FIL-3.0	Half Height FIL-1.5
AtlanFilter total height	860mm	660mm
AtlanFilter Diameter	740mm	740mm
Minimum Head required	850mm	550mm
Treatment flow rate	3.0 L/s	1.5 L/s
Height of inlet ports above vault floor	250mm	250mm
Filtered water collection pipe diameter	50mm	50mm

AtlanFilter Full Height - FIL-3.0



AtlanFilter Half Height - FIL1.5



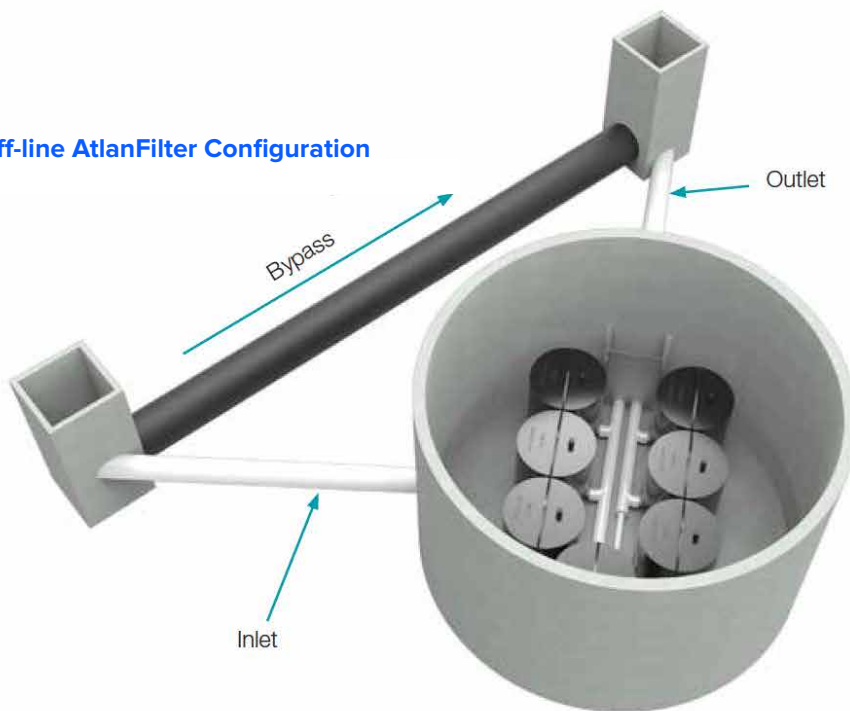
SYSTEM CONFIGURATION

AtlanFilter cartridges are installed in concrete or fibreglass tanks commonly referred to as 'vaults'. The vault selection and configuration are based on site characteristics and/or constraints; computational stormwater quality modelling; and selected AtlanFilter models. Typical AtlanFilter system configurations are shown below.

In-line AtlanFilter Configuration



Off-line AtlanFilter Configuration



HEALTH AND SAFETY

A. Personal health & safety

When carrying out the necessary installation operations of the AtlanFilter all contractors and staff personnel must comply with all current workplace health and safety legislation.

The below measures should be adhered to as practically as possible.

- Comply with all applicable laws, regulations and standards.
- All those involved are informed and understand their obligations in respect of the workplace health and safety legislation.
- Ensure responsibility is accepted by all employees to practice and promote a safe and healthy work environment.

B. Personal protective equipment/safety equipment

When carrying out the necessary installation operations of the AtlanFilter, wearing the appropriate personal protective equipment and utilising the adequate safety equipment is vital to reducing potential hazards.

Personal protective equipment / safety equipment in this application includes:

- Eye protection
- Safety apron
- Fluorescent safety vest
- Form of skin protection
- Puncture resistant gloves
- Steel capped safety boots
- Ear muffs
- Hard hat/s
- Sunscreen

C. Confined space

In the event access is required into the vault, confined space permits will be required which is not covered in this Guide. Typical equipment required for confined space entry include:

- Harness
- Gas detector
- Tripod
- Spotter

D. Traffic Control

It is not uncommon for Atlan Filter cartridges to be installed underneath trafficable areas. Minimum traffic control measures will need to be put in place in accordance with traffic control plans set out by respective local and state road authorities.



Vaults are to be treated as confined space.

Entry by permit only.



Monitor weather conditions prior to operation maintenance. Do not enter a vault during an episode of heavy rain as this can create a risk of drowning.



MAINTENANCE FREQUENCY

The AtlanFilter's design allows for a greater life span when frequently maintenance. Maintenance is broken up into three categories which include:

- Standard inspection
- General cleaning
- Cartridge replacement.

Standard Inspection

Standard inspections are conducted at regular four month intervals. At this time, an approved trained maintenance officer or Atlan representative shall undertake all measures outlined in Maintenance Procedure, Standard Inspection.

General Cleaning

At the end of each standard inspection, trigger measures will identify if general cleaning is required.

General cleaning will need to be executed immediate during standard inspections if the follow triggers are satisfied:

- Build-up of debris/pollutants within the vault greater than 150mm;
- Accumulation of debris/pollutants on the outlet chamber of the AtlanFilter vault;
- After large storm events, tidal or flooding impacts at the request of the owner;

Cartridge Replacement

Stormwater treatment is dependent on the effectiveness of the AtlanFilter cartridge system. As the AtlanFilter ages, pollutants will inundate the cartridge and ultimately reduce the treatment flow rate. At this point, a AtlanFilter flow test apparatus will be utilities to determine if replacement cartridges are required.

Based on the [site] concept modelling (MUSIC) and previous industry experience, we estimate the life of the AtlanFilter to be between 6 - 8 years. As a minimum requirement, each AtlanFilter cartridge should be replaced within 10 years.

The life cycle of the AtlanFilter can be impacted if standard inspections and general maintenance is not undertaken in accordance with this operation and maintenance Guide.

Other factors that will affect the above life cycle of the AtlanFilter include:

- Installation of cartridge system during construction phase and impacted by construction sediment loads;
- Neglecting to install pre-treatment using an industry approved GPT or a surface inlet pit trash bag such as the Atlan StormSack.
- Unforeseen environmental hazards affecting the AtlanFilter functionality.

MAINTENANCE PROCEDURES

Stormwater pollutants captured and retained by the AtlanFilter system need to be periodically removed to ensure environmental values are upheld. All associated maintenance works is heavily dependent on the site's operational activities and generated stormwater pollutants. To ensure the longevity of the installed AtlanFilter treatment system, it is imperative that the procedures detailed in this Guide are followed and all appropriate measures are actioned immediately.

Standard inspection

The standard inspection requires personal experience of Atlan products to visual inspection the vault and filter conditions.

Confined space requirements may not be required if a full inspection and assessment of each AtlanFilter can be achieved at surface level without being deemed a confined space entry.

The standard inspection requires personal experience of Atlan products to visual inspection the vault and filter conditions.

Confined space requirements may not be required if a full inspection and assessment of each AtlanFilter can be achieved at surface level without being deemed a confined space entry.

Site Inspection Procedures

1. Implement pre-start safety measures

Ensure that the area in which operational works are to be carried out is cordoned off, to prevent unauthorised access. Adequate safety barriers must be erected.

Area in which work is to be carried out must be clean, safe and hazard free. (Refer to figure 4.)

2. Set-up gantry tripod above manhole

Assemble and position the gantry above the manhole safely and as practically as possible. Attach the winch or chain block to the gantry for lifting the Atlan Filters.

Perform safety procedures ie. Attach harnesses etc. (if confined space).

3. Open manhole lid

Once you have set up the Gantry and ensured that the area is safe to operate in, you can proceed to open the manhole lid, using lid lifters.

4. Conduct gas tests

(If tank is classed confined space)

Once the lids have been removed to a safe distance to prevent tripping, you must then proceed to conduct gas tests. Perform necessary gas tests according to the confined space regulations.

5. Once confined space has been deemed safe to operate in, enter tank safely

Once you have carried out the required gas test and the work area is deemed safe, you may then enter the pit via a ladder or winch system to assess the work area you will be operating in. Ensure all confined space

6. AtlanFilter system assessment

Perform a review of the AtlanFilter system using the AtlanFilter assessment report/checklist. Sign off and forward a copy of the report to property manager and Atlan representative.

7. Reinstate AtlanFilter system and disposal

At the completion of the site inspection, ensure the site is reinstated back to its initial state and all pollutants are removed from the site in line with pollutant disposal procedures.

8. Sign off and forward a copy of the report to property manager and Atlan representative

GENERAL CLEANING

Vacuum out of Filter tank, removal, and disposal of pollutants at the completion of a standard inspection, general cleaning may be deemed necessary immediately or scheduled for a future date. Steps undertaken for general cleaning should be in general accordance with the procedure outlined below but not limited.

1. Implement pre-start safety measures

Ensure that the area in which operational works are to be carried out is cordoned off, to prevent unauthorised access. Adequate safety barriers must be erected.

Area in which work is to be carried out must be clean, safe and hazard free. (Refer to figure 4.)

2. Set-up gantry tripod above manhole

Assemble and position the gantry above the manhole safely and as practically as possible. Attach the winch or chain block to the gantry for lifting the AtlanFilters.

Perform safety procedures ie. attach harnesses etc. (if confined space).

3. Open manhole lid

Once you have sent up the Gantry and ensured that the area is safe to operate in, you can proceed to open the manhole lid, using lid lifters.

4. Conduct gas tests

(If tank is classed confined space)

Once the lids have been removed to a safe distance to prevent tripping, you must then proceed to conduct gas tests. Perform necessary gas tests according to the confined space regulations.

5. Once confined space has been deemed safe to operate in, enter tank safely

Once you have carried out the required gas test and the work area is deemed safe, you may then enter the pit via a ladder or winch system to assess the work area you will be operating in. Ensure all confined space

6. AtlanFilter system assessment

Perform a review of the AtlanFilter system using the AtlanFilter assessment report/checklist.

7. Pollutant removal from tank

Perform clean-up using a licenced vacuum truck contractor or wet/dry vacuum, depending on level of sediment built up and/or tank size.

8. Reinstate AtlanFilter system and disposal

At the completion of the site inspection, ensure the site is reinstated back to its initial state and all pollutants are removed from the site in line with pollutant disposal procedures.

9. Sign off and forward a copy of the report to property manager and Atlan representative

CARTRIDGE RECYCLING AND REPLACEMENT

AtlanFilter cartridges can be swapped out for new cartridges. The spent AtlanFilter cartridges can be collected from site and sent to Atlan Stormwater's facilities, where the spent media will be removed from the cartridge in factory conditions and disposed of in accordance with environmental regulations.

The AtlanFilter cartridge will be recharged with new media, thereby recycling and repurposing the cartridge.

AtlanFilter replacement procedures may vary depending on the configuration of the AtlanFilters, the type of vault and engineers' specs. Replacement instructions for manhole AtlanFilter systems and precast vault AtlanFilter systems are contained in this section.

At the completion of a standard inspection, AtlanFilter replacement may be deemed necessary immediately or scheduled for a future date. Steps undertaken for cartridge replacement should be in general accordance with the procedure outlined below but not limited.

1. Implement pre-start safety measures

Ensure that the area in which operational works are to be carried out is cordoned off, to prevent unauthorised access. Adequate safety barriers must be erected.

Area in which work is to be carried out must be clean, safe and hazard free.

2. Set-up gantry tripod above manhole

Assemble and position the gantry above the manhole safely and as practically as possible. Attach the winch or chain block to the gantry for lifting the AtlanFilters.

Perform safety procedures ie. attach harnesses etc. (if confined space).

3. Open manhole lid

Once you have sent up the gantry and ensured that the area is safe to operate in, you can proceed to open the manhole lid, using lid lifters.

4. Conduct gas tests

(If tank is classed confined space)

Once the lids have been removed to a safe distance to prevent tripping, you must then proceed to conduct gas tests. Perform necessary gas tests according to the confined space regulations.

5. Once confined space has been deemed safe to operate in, enter tank safely

Once you have carried out the required gas test and the work area is deemed safe, you may then enter the pit via a ladder or winch system to assess the work area you will be operating in. Ensure all confined space procedures are followed.

6. Remove exhausted cartridges

Disconnect all internal pipe work from inside the vault. Unbolt anti-floatation measures and remove cartridges from the vault using Gantry Tripod method.

7. Pollutant removal

Using a wet/dry vacuum or sucker truck, suck out all the residual pollutant from the vault.

8. Install pipework and AtlanFilters

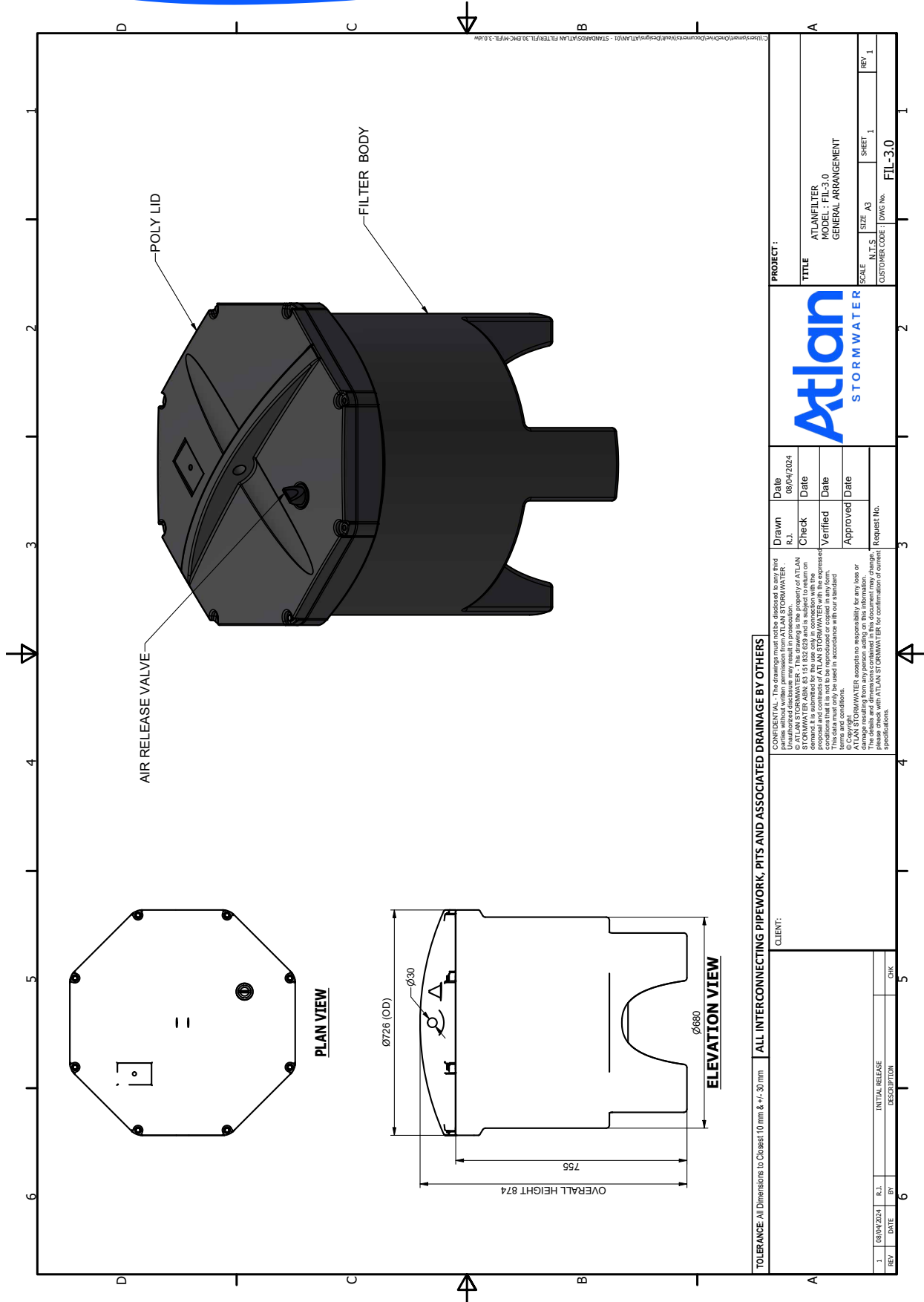
Please refer to the below standard install diagrams for the AtlanFilters. Then refer to your site specific drawings, as site requirements may require something different to the standard layout. Lower filters into tank, position into place, connect filter outlet pipework with the supplied fittings.

9. Install anti-floatation system

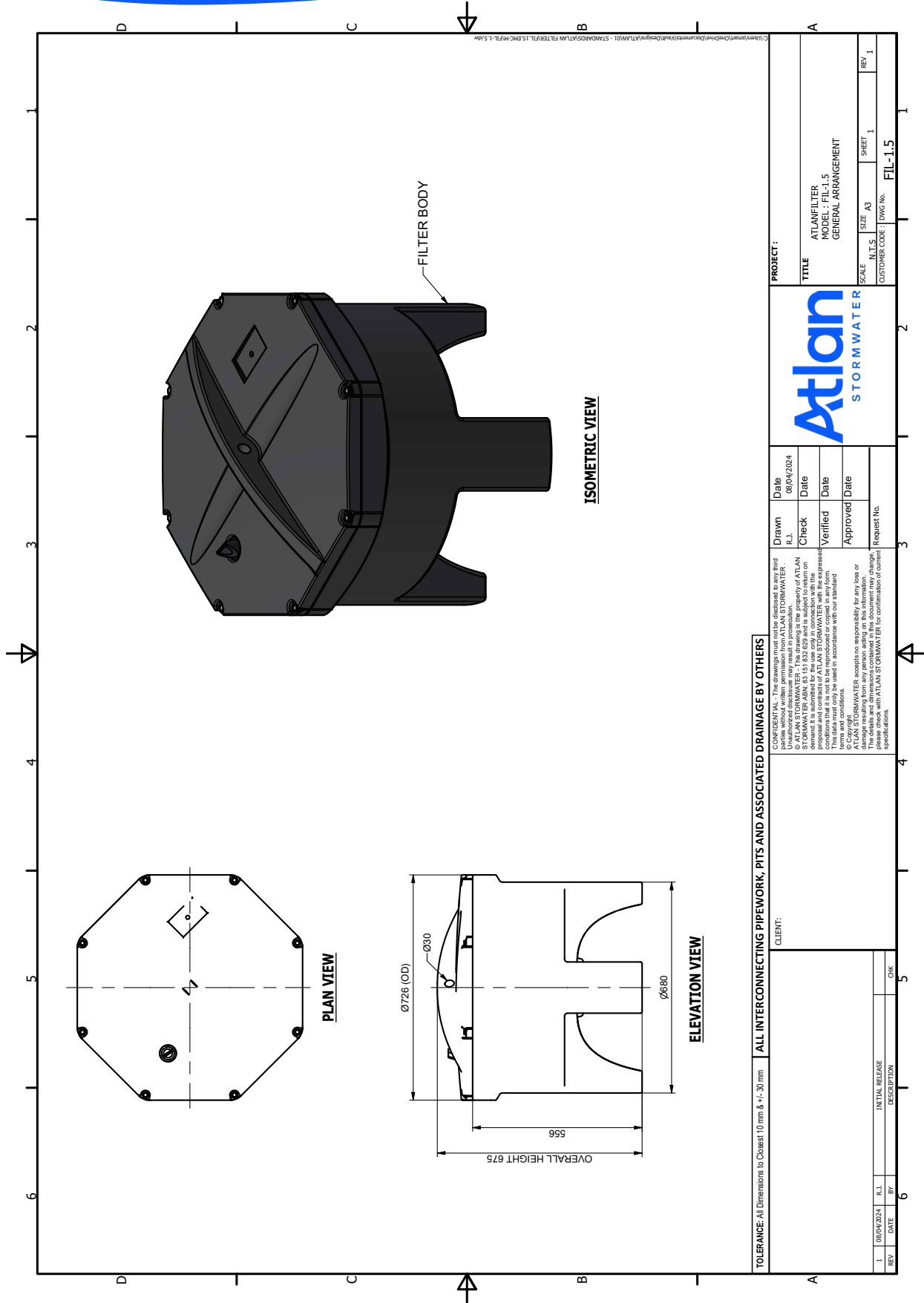
Please refer to the detailed drawings showing how the anti-floatation (anchor) bars are to be installed.

10. Sign off and forward a copy of the report to property manager and Atlan representative

Drawing Full Height



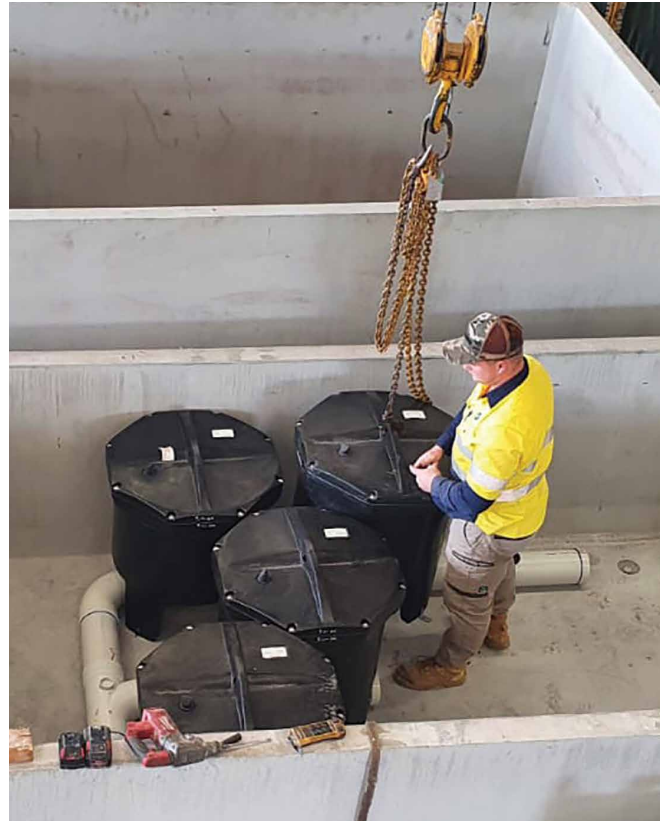
Drawing Half Height



SITE EXIT & CLEAN UP

At the end of the scheduled maintenance, approved contractors or Atlan maintenance crew are required to reinstate the site to pre-existing conditions. Steps included but limited to are:

- Ensure all access covers are securely inserted back into their frames;
- Remove and dispose collected pollutants from the site in accordance with local regulator authorities;
- Retrieve all traffic control measures and maintenance tools; and
- Return all exhausted and/or damaged Atlan products to Atlan Stormwater to begin recycling program.



Joy in water

'We believe clean waterways are a right not a privilege and we work to ensure a Joy in Water experience for you, with your children and grandchildren.'

Andy Hornbuckle



Atlan
STORMWATER

P 02 8705 0255
sales@atlan.com.au
100 Silverwater Rd,
Silverwater NSW 2128
atlan.com.au



Atlan[®]
STORMWATER

AtlanFilter[®]

Cartridge filter for tertiary stormwater treatment



Advanced Filtration Technology

Utilises up-flow filtration to effectively capture pollutants such as sediment, hydrocarbons, heavy metals, phosphorus, nitrogen, and total suspended solids (TSS).



Compact Design

AtlanFilter's compact, modular design suits tight spaces and supports unlimited cartridges. Raised 200mm off the ground, the legs help prevent clogging and extend media life.



High-Efficiency Inorganic Media

AtlanFilter's inorganic filter media ensures it doesn't leach nitrogen and other nutrients. Providing high removal efficiencies, the cartridge system is designed for high flow capacity and greater surface area for stormwater treatment.



Durable Construction

AtlanFilter's design has no moving parts which increases reliability, longevity and durability.



Versatile Applications

Suitable for manholes, OSD tanks, vaults, and both trafficable and non-trafficable zones, providing adaptable stormwater solutions.



Easy Installation and Maintenance

Lightweight, no-crane installation with straightforward maintenance, easy cartridge access for pollutant removal, and a highly effective vertical backwash action that keeps the media clean and fresh.



Flexible Flow Rate

Offers 3 LPS for full height and 1.5 LPS for half height filters, with SQIDEP-verified performance.



Sustainable Performance

Inorganic media prevents nutrient leaching, ensuring efficient and reliable treatment outcomes.



Locally Manufactured

Manufactured locally to ensure competitive pricing and reduce delivery times.

Tertiary Stormwater Filtration Cartridges

Our cartridge filter system, AtlanFilter®, is a tertiary stormwater filtration system that incorporates an upflow treatment process which maximises surface treatment area. Flow through the filter cartridges utilises a self-regulating siphon which results in a low maintenance and high performance treatment of stormwater runoff. The automatic backwash at the end of each storm event further lengthens the lifespan of the stormwater treatment filter.

Hydraulic pressure forces water through the filter media — causing a constant velocity throughout the filter area realising a consistent media contact time and therefore treatment. Upon completion of a stormwater treatment cycle, the filter backwashes and effectively dislodges particulates from the filtration layers.

Applications

- Car parks & shopping centres
- Council depots
- Industrial estates
- Heavy vehicle maintenance
- Airport aprons & tarmacs
- Transport depots & loading bays
- Tunnels
- Highways & transport corridors
- Recycling yards



SQIDEP Tested Treatment Efficiencies*

AtlanFilter is SQIDEP approved after passing Stormwater Australia's rigorous testing and performance assessment process.

POLLUTANT	EFFICIENCY
Total Suspended Solids (TSS)	85%
Total Phosphorus (TP)	74%
Total Nitrogen (TN)	59%



Emerging Stormwater Treatment Technologies (TAPE)

AtlanFilter is approved by the Washington State Department of Ecology for basic treatment, phosphorus removal, and dissolved metals, meeting CULD and PULD standards.

*Contact Atlan to confirm approved performance for the project LGA



How It Works

The AtlanFilter has an upflow treatment process that maximises surface area. The innovative cartridge filter system provides excellent pollutant removal in a small footprint.

Hydraulic pressure forces water through the filter media, which discharges through the centre tube and out through the outlet collection manifold.

Upon completion of a treatment cycle, each cartridge backwashes and effectively dislodges particulates from the filtration layers. This reestablishes filter media porosity. The dislodged particles accumulate on the vault floor for easy removal during maintenance.

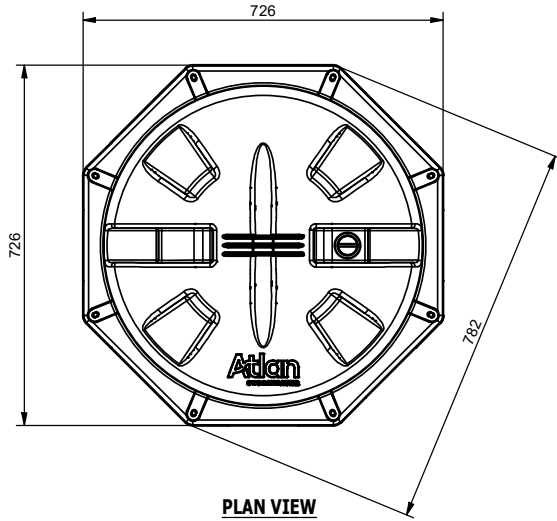
AtlanFilter's design has no moving parts and generates a true siphon effect.

AtlanFilters are often installed downstream of nearby devices in a treatment train. For example, an Atlan GPT upstream greatly increases the life cycle interval of the AtlanFilter. These devices will remove larger gross pollutants, coarse sediments, total suspended solids and hydrocarbons - enabling the AtlanFilter to target fine particulate matter and nutrients.



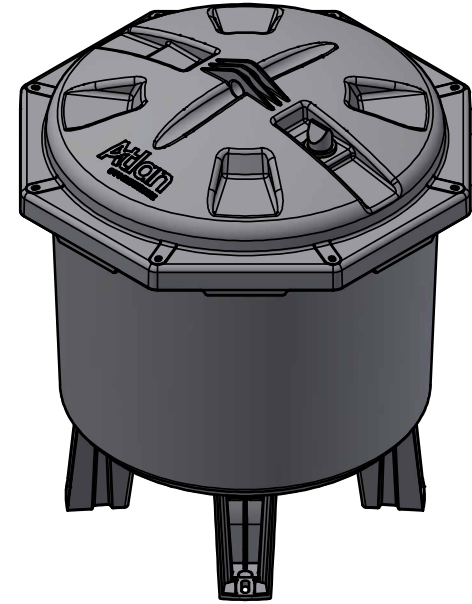
ATLANFILTER	STANDARD HEIGHT FIL-3.0	STANDARD HEIGHT - SHORT LEGS FIL-3.0.SF	HALF HEIGHT FIL-1.5	HALF HEIGHT - SHORT LEGS FIL-1.5.SF
Overall height	850mm	750mm	615mm	515mm
Diameter	726mm	726mm	726mm	726mm
Minimum head required	850mm	750mm	550mm	450mm
Treatment flow rate	3.0L/s	3.0L/s	1.5 L/s	1.5 L/s
Filter outlet diameter	50mm	50mm	50mm	50mm



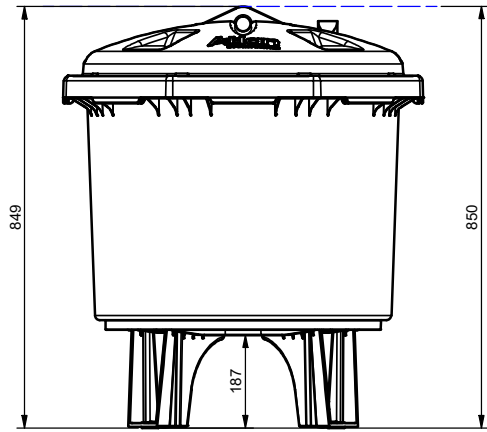


PLAN VIEW

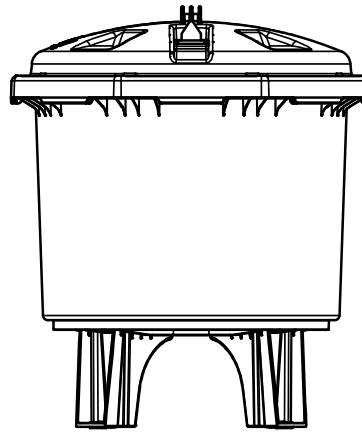
**ATLAN FILTER - FIL-3.0
STANDARD HEIGHT**



ISOMETRIC VIEW



ELEVATION VIEW



SIDE VIEW

TOLERANCE: All Dimensions to Closest 10 mm & +/- 30 mm

ALL INTERCONNECTING PIPEWORK, PITS AND ASSOCIATED DRAINAGE BY OTHERS

27/01/2025		P.Z.	INITIAL RELEASE	
REV	DATE	BY	DESCRIPTION	CHK

CLIENT:

CONFIDENTIAL - The drawings must not be disclosed to any third parties without written permission from ATLAN STORMWATER. Unauthorized disclosure may result in prosecution.
 © ATLAN STORMWATER - This drawing is the property of ATLAN STORMWATER ABN: 83 151 832 629 and is subject to return on demand. It is submitted for the use only in connection with the proposal and contracts of ATLAN STORMWATER with the expressed conditions that it is not to be reproduced or copied in any form. This data must only be used in accordance with our standard terms and conditions.
 © Copyright
 ATLAN STORMWATER accepts no responsibility for any loss or damage resulting from any person acting on this information. The details and dimensions contained in this document may change, please check with ATLAN STORMWATER for confirmation of current specifications.

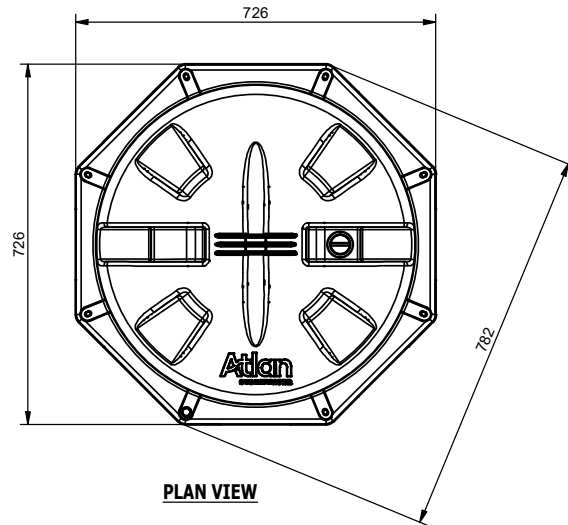
Drawn	Date
P.Z.	27/01/2025
Check	Date
Verified	Date
Approved	Date
Request No.	



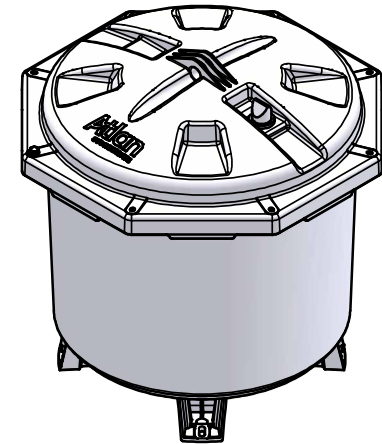
PROJECT :			
TITLE ATLAN FILTER FIL-3.0			
SCALE N.T.S	SIZE A3	SHEET 1	REV
CUSTOMER CODE :		DWG No. FIL-3.0	

C:\Users\smart\OneDrive\Documents\Visual\Design\ATLAN01 - STANDARD\ATLAN FILTER\FIL3.0\FIL3.0.dwg

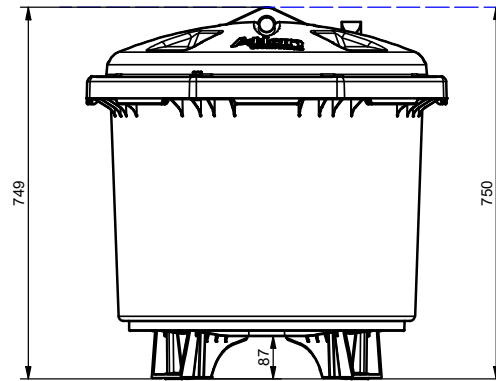
ATLAN FILTER - FIL-3.0 STANDARD HEIGHT - SHORT LEGS



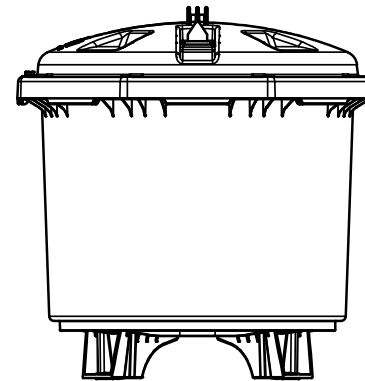
PLAN VIEW



ISOMETRIC VIEW



ELEVATION VIEW

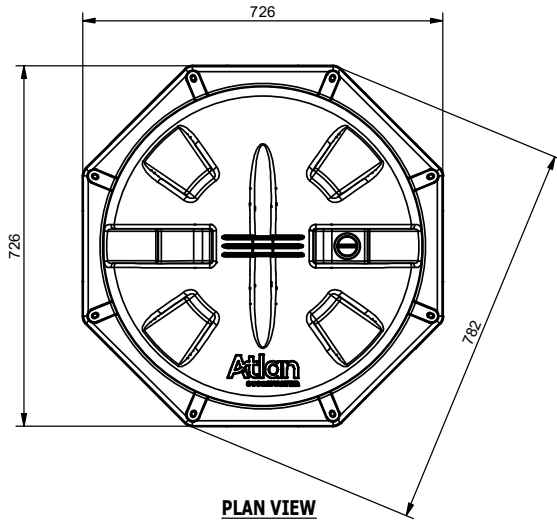


SIDE VIEW

TOLERANCE: All Dimensions to Closest 10 mm & +/- 30 mm **ALL INTERCONNECTING PIPEWORK, PITS AND ASSOCIATED DRAINAGE BY OTHERS**

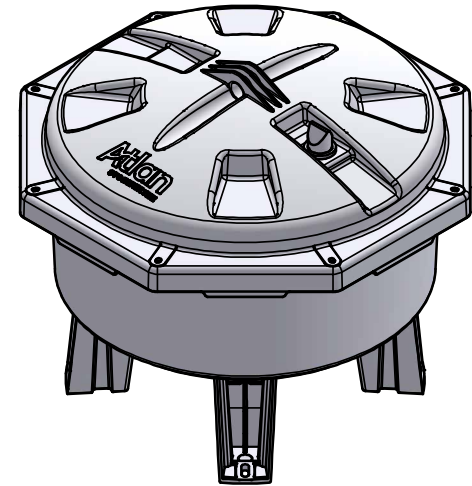
		CLIENT:		CONFIDENTIAL - The drawings must not be disclosed to any third parties without written permission from ATLAN STORMWATER. Unauthorized disclosure may result in prosecution. © ATLAN STORMWATER - This drawing is the property of ATLAN STORMWATER ABN: 83 151 832 629 and is subject to return on demand. It is submitted for the use only in connection with the proposal and contracts of ATLAN STORMWATER with the expressed conditions that it is not to be reproduced or copied in any form. This data must only be used in accordance with our standard terms and conditions. © Copyright ATLAN STORMWATER accepts no responsibility for any loss or damage resulting from any person acting on this information. The details and dimensions contained in this document may change, please check with ATLAN STORMWATER for confirmation of current specifications.		Drawn P.Z. Date 29/02/2024				PROJECT :			
						Check Date				TITLE ATLAN FILTER - SHORT FIL-3.0			
						Verified Date				SCALE SIZE SHEET REV N.T.S A3 1			
						Approved Date				CUSTOMER CODE : DWG No. FIL-3.0.SF			
						Request No.							
REV	DATE	BY	P.Z.	INITIAL RELEASE	CHK								
			DESCRIPTION										

C:\Users\kmm\OneDrive\Documents\Drawings\ATLAN\1 - STANDARD\ATLAN FILTER\FIL-3.0\FIL-3.0 SHORT FOOT\FIL-3.0.SF.dwg

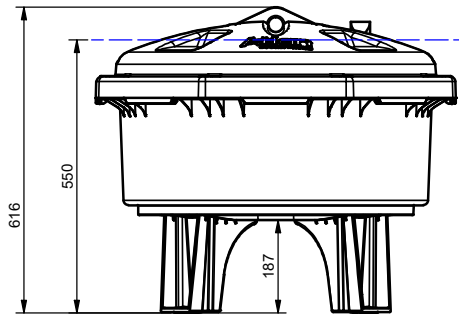


PLAN VIEW

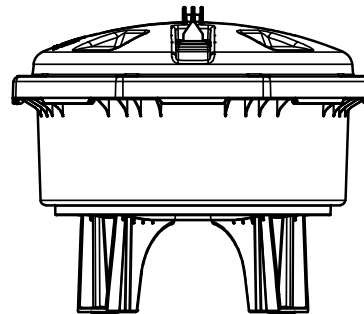
**ATLAN FILTER - FIL-1.5
HALF HEIGHT**



ISOMETRIC VIEW



ELEVATION VIEW



SIDE VIEW

TOLERANCE: All Dimensions to Closest 10 mm & +/- 30 mm

ALL INTERCONNECTING PIPEWORK, PITS AND ASSOCIATED DRAINAGE BY OTHERS

27/01/2025	P.Z.	INITIAL RELEASE	
REV	DATE	BY	DESCRIPTION
			CHK

CLIENT:

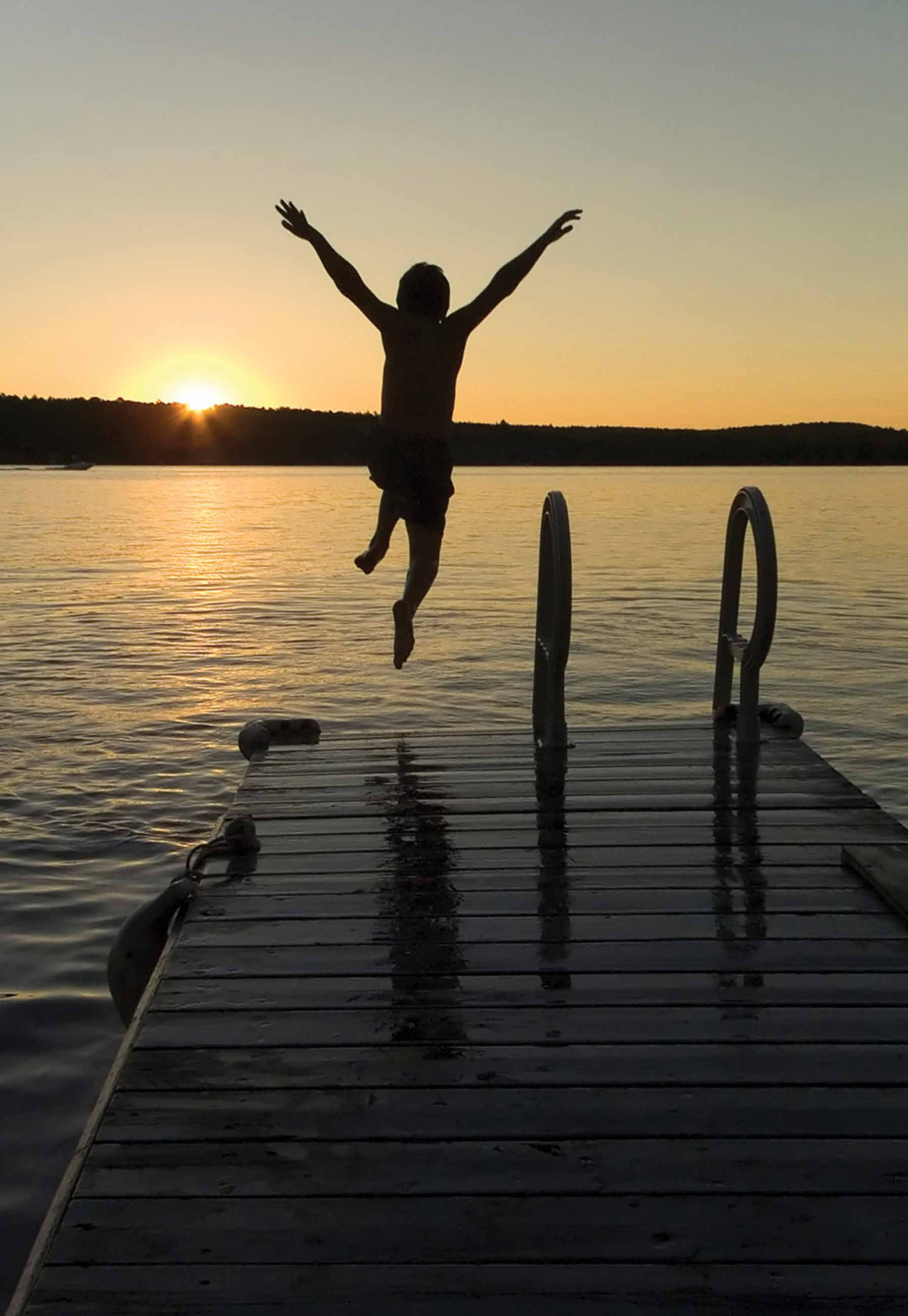
CONFIDENTIAL - The drawings must not be disclosed to any third parties without written permission from ATLAN STORMWATER. Unauthorized disclosure may result in prosecution.
 © ATLAN STORMWATER - This drawing is the property of ATLAN STORMWATER ABN: 83 151 832 629 and is subject to return on demand. It is submitted for the use only in connection with the proposal and contracts of ATLAN STORMWATER with the expressed conditions that it is not to be reproduced or copied in any form. This data must only be used in accordance with our standard terms and conditions.
 © Copyright
 ATLAN STORMWATER accepts no responsibility for any loss or damage resulting from any person acting on this information. The details and dimensions contained in this document may change, please check with ATLAN STORMWATER for confirmation of current specifications.

Drawn	Date
P.Z.	27/01/2025
Check	Date
Verified	Date
Approved	Date
Request No.	



PROJECT :			
TITLE ATLAN FILTER FIL-1.5			
SCALE N.T.S	SIZE A3	SHEET 1	REV
CUSTOMER CODE :		DWG No. FIL-3.0	

C:\Users\jmart\OneDrive\Documents\Work\Design\ATLAN\01 - STANDARDS\ATLAN FILTER\FIL-1.5\FIL-1.5.dwg



Joy in water

'We believe clean waterways are a right, not a privilege and we work to ensure a Joy in Water experience for you, with your family & friends.'

Andy Hornbuckle, CEO

Atlan[®]
STORMWATER

AUSTRALIA

P 1300 773 500 | +61 2 8705 0255
sales@atlan.com.au | atlan.com.au

NEW ZEALAND

P 09 930 7417
sales@atlan.co.nz | atlan.co.nz

INTERNATIONAL

atlanstormwater.com