

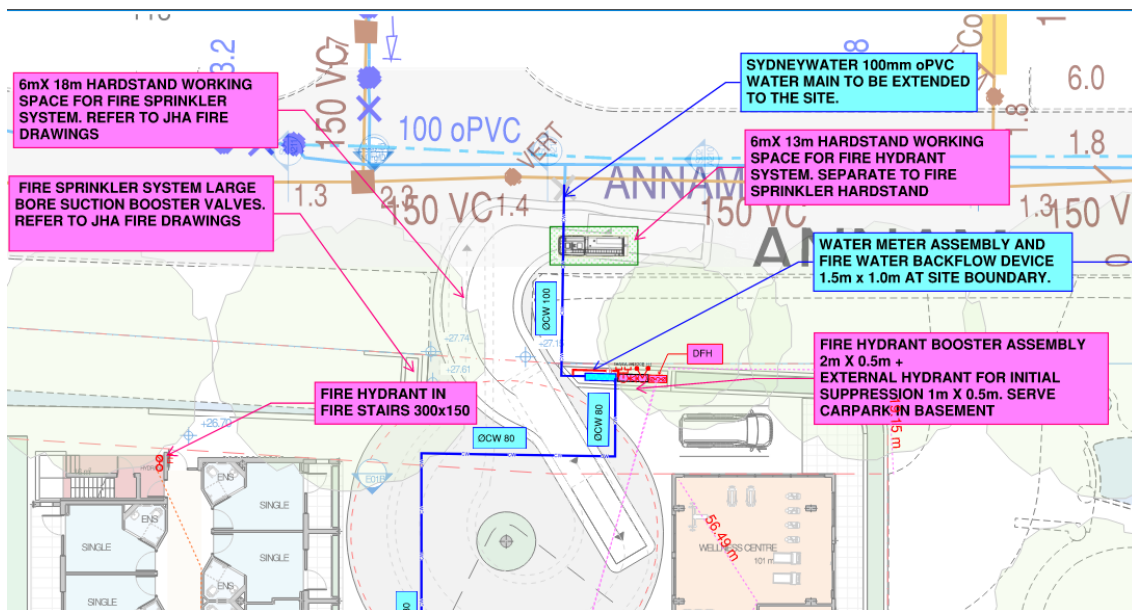


## 2. POTABLE WATER SERVICING

JHA has obtained a Dial Before You Dig (DBYD) report to locate the Sydney Water potable water main suitable for site connection. The site's potable water supply will be connected via an existing 100mm branch off the 100mm oPVC authority main located along Annam Road.

The existing 100mm branch will be extended into the site to the nominated location, where it will service the potable water meter assembly, fire hydrant system, and sprinkler system.

A pressure and flow statement has also been obtained to determine the available flow for the site, assisting in the assessment of whether water storage tanks and pumps are required. Based on the findings, no pumps or tanks are needed for the potable water or fire hydrant systems. However, both a pump and storage tank will be provided for the fire sprinkler system.



Connection to Sydney Water Cold Water Main on Annam Road

### EXPECTED WATER MAIN PRESSURES AT CONNECTION POINT

Normal Supply Conditions	
Maximum Pressure	77 metre head
Minimum Pressure	61 metre head

WITH PROPERTY FIRE PREVENTION SYSTEM DEMANDS	Flow l/s	Pressure head m
Fire Hose Reel Installations (Two hose reels simultaneously)	0.66	61
Fire Hydrant / Sprinkler Installations (Pressure expected to be maintained for 95% of the time)	10 15 20 25	61 59 57 54
Fire Installations based on peak demand (Pressure expected to be maintained with flows combined with peak demand in the water main)	10 15 20 25	59 57 55 51
Maximum Permissible Flow	26	51

Pressure and Flow Statement for 100mm Water Main on Annam Road

### 3. STORMWATER AND RAINWATER REUSE

Roof drainage will be collected via gravity downpipes and gravity stormwater system and will discharge to a combination of the sites civil system and the rainwater reuse tanks. The rainwater tank will be combined with the on-site detention (OSD) tank as part of the civil stormwater system, designed by the civil engineering team.

Regards,

Scott Thompson



Associate Hydraulic Services Engineer