

13. Landscape

13.1 EXECUTIVE SUMMARY

This issue of the Landscape Schematic Design Report focuses on clarifying the preliminary landscape design principles and design language employed and incorporates connections to previous stages work.

The report illustrates how key principles and strategy will relate to new landscape spaces within the Dubbo Hospital campus and its vision for the future.

The key strategies/ aspirations include:

- Responsive design to previously completed stages to create a unified campus
- Retention of existing rural landscape character and historical significance.
- A fluidly integrated way finding strategy and landscape design that embodies the local vernacular.
- Recognition and re-introduction of indigenous planting, including regionally significant bush tucker and medicinal species.
- Creating unified social and passive places that harness the power of healing and enrich the life of those who encounter it.

These key strategies and aspirations principles align with the earlier masterplan report, and endeavour to strengthen the decisions already made through consultation by the project team.

Each key landscape space is defined and drawn with direct relationship to the functional brief and a connection to the sites relationship with an existing landscape character, rural location and connection to people. This has been crucial in determining and conceptualising the overall landscape strategy.

Further analysis and implementation of key landscape strategies within the proposed landscape spaces is required to create a specific focus on gaining outdoor access for patients as a form of treatment. This enabling process will engage patients with the landscape design and clarify design thinking in many areas. The report highlights the landscape as a key component in the restorative health and welfare of individual patients and the design should embody the qualities of the surrounding environment.

Design Development will progress concurrently with capital cost analysis to ensure budgets are managed and key deliverables are met. A continual and collaborative consultation with key stakeholders and Health Infrastructure will help further determine the detailed expression of these objectives.

13.2 DELIVERABLE SUMMARY

The landscape design will be prepared to meet the allocated budget while satisfying the functional brief. This will be achieved by incorporating recycled materials, rationalised native planting palette, selection of refined and robust materials, and staged delivery of landscape components as necessary.

Following initial cost analysis and review of the proposed landscape design, further development will occur to ensure the successful delivery of the project. Ongoing user group consultation will determine the detailed expression of each landscape component and maintain functional appropriateness.

It is the purpose of this Schematic Design Report to provide an initial landscape structure for review and comment which will inform the design direction. The development brief will be further refined through a series of Cost Planning Workshops held throughout the design stages. From this, a series of options to provide better efficiencies and reduced cost will be developed.

It is important to understand certain elements of the landscape may be delivered as a component of future works, and not all areas will be provided within this first phase of work. It is anticipated that this first stage will encompass the main entry work, internal courtyard and the eastern carpark, there is potential the peripheral landscape may only be partially delivered.

13.3 DESIGN STATEMENT

The Dubbo Base Hospital offers a series of distinct opportunities and constraints for the landscape planning and design. The proposed redevelopment is situated within active existing Hospital facilities, making it vital to consider the ongoing future uses of the Hospital and its patients. Therein the proposed landscape aims to respond to the key objectives of the masterplan proposal, reflect the local character and site surrounds with appropriate consideration to existing/ proposed facilities, and visual aspect especially where it can be attributed to the holistic care and consideration of patients and staff.

The landscape design hinges on creating a legible and inviting place of local character which is unified by the use of indigenous planting, interpretive symbolism and historical elements. The new and existing Dubbo Hospital building will focus on creating a 'green' connection to nature within a legible landscape, central to all future master planning decisions and for this reason it will grow to become a verdant oasis activated by regular uses yet tranquil to those who are in need of respite.

The organisation of the landscape will complement the building, accentuating the sense of arrival, settling the building mass, and maximizing garden vistas from the building and from many moments within its interior. The entry forecourt will be a cool, calm and simple space that breaks the scale of the building through well considered tree planting and screening shrubs. It will offer a place to rest at the entry and provide distinct separation between the building and carpark, augmenting the building entry. It will maximise the use of space available, yet retain flexibility for possible future upgrades, and provide opportunities for connections to the surrounding landscapes through the protection of existing vistas and patient outlook.

Within the building envelope, and beyond the ground floor lobby a forecourt respite garden will be created. The gardens use the surrounding buildings scale, curtilage and obvious desire lines to create healing places well positioned to receive sunlight throughout the year, ensuring it will achieve the intent of providing articulated green spaces with clear legibility of travel.

13.4 INTRODUCTION

The purpose of the Schematic Design Report is to provide a framework for new build works for Stage 3+4 of the Dubbo Hospital Redevelopment. The Schematic Design will address key priorities and development delivery process and strategies. This design principle statement encapsulates information received to date and outcomes of workshops with the consultant design team. The principles articulated in this report will be further developed through Concept and Design Development phases.

Rice Daubney have developed a set of master planning aspirations that have been derived from the Functional Brief, subsequent consultation and site analysis. These have been further developed to generate subsets of principles to guide master planning and schematic design.

Central to these aspirations is the retention of a strong connection to landscape that instills an awareness of the project's specific 'place'. This informs the Dubbo Hospital's landscape arrangement, optimising its current aspect, and will be a driver in determining an appropriate identity for a regional facility sited in a rural landscape. It generates a strategic landforming response and the implementation of new landscape elements that will develop a framework for the precinct and respond to the site's topography. Extensive existing tree planting, and recently completed stage 1 & 2 works are addressed to achieve a central connecting spine within the campus with a sense of transparency/ views and/or physical connections between the hospital and landscape at points along the journey. This aims to connect activity of the new Dubbo Hospital precinct with the landscape beyond and imbue the facility with a sense of restfulness and healing.

Each landscape space will highlight the positive existing landscape character that surrounds the Hospital and continue to build upon the existing local setting. The design will be carefully considered to create a range of different sequences and emotions that define and support the variety of important landscape spaces allowed for in the brief.

13.5 ASPIRATIONAL PRINCIPLES

The following aspirational principles have been derived from the Functional Brief, previous design reports and evidence based design criteria that focuses on the holistic care of patients to provide welcome places for respite and rehabilitation.

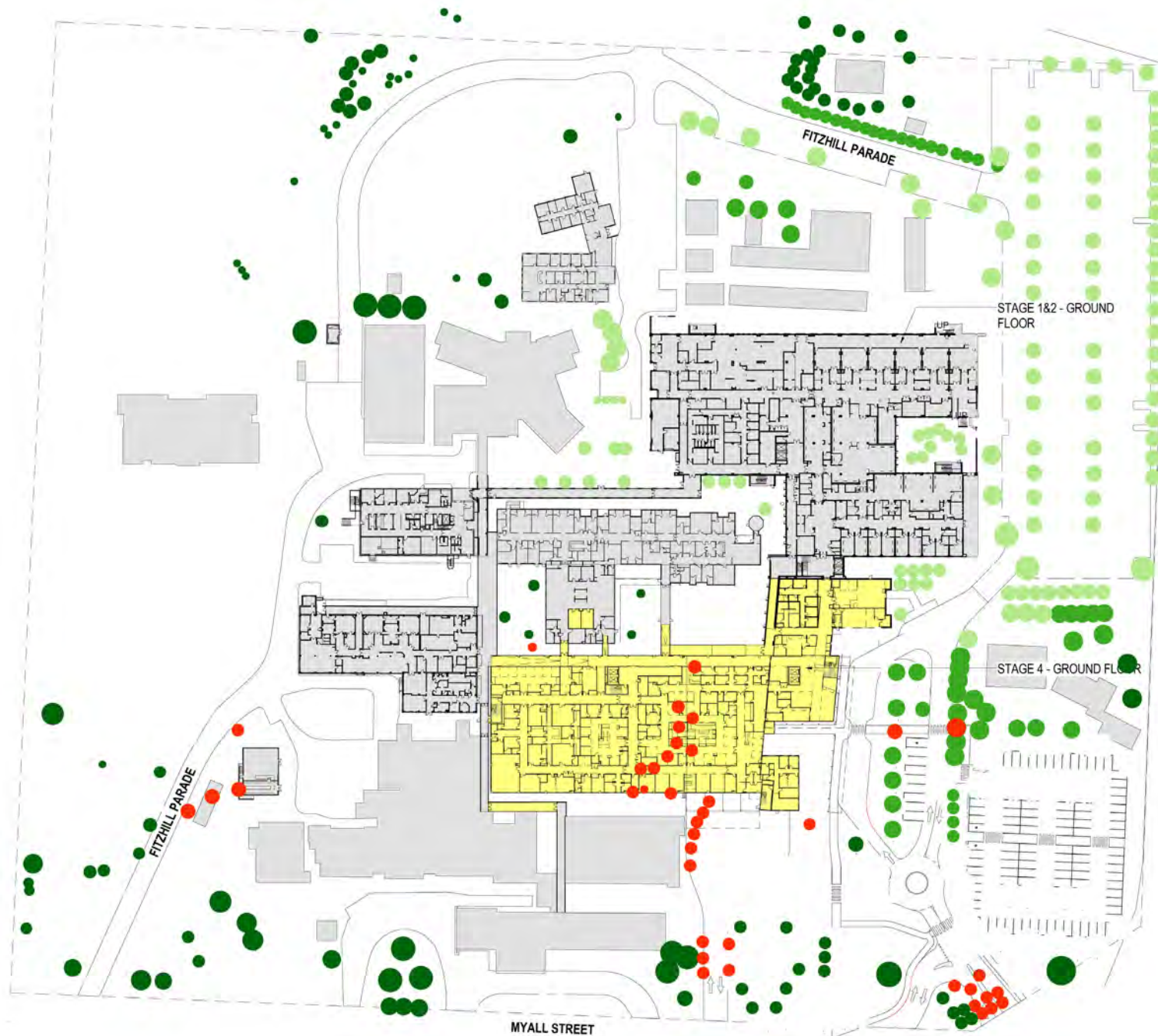
The key principles include:

- Harness the power of Healing through landscape
- Use Climatically and contextually appropriate planting to engage staff and patients
- Establish a Strong Sense of Hospital Community through the creation of a green core.
- Use Medicinal and Bush Tucker Plants as a means of education and identity
- Provide healing spaces with good access to sunlight - Create locations of respite within the landscape
- Define an Integrated Cultural Response to Highlight Function and Circulation of the Hospital



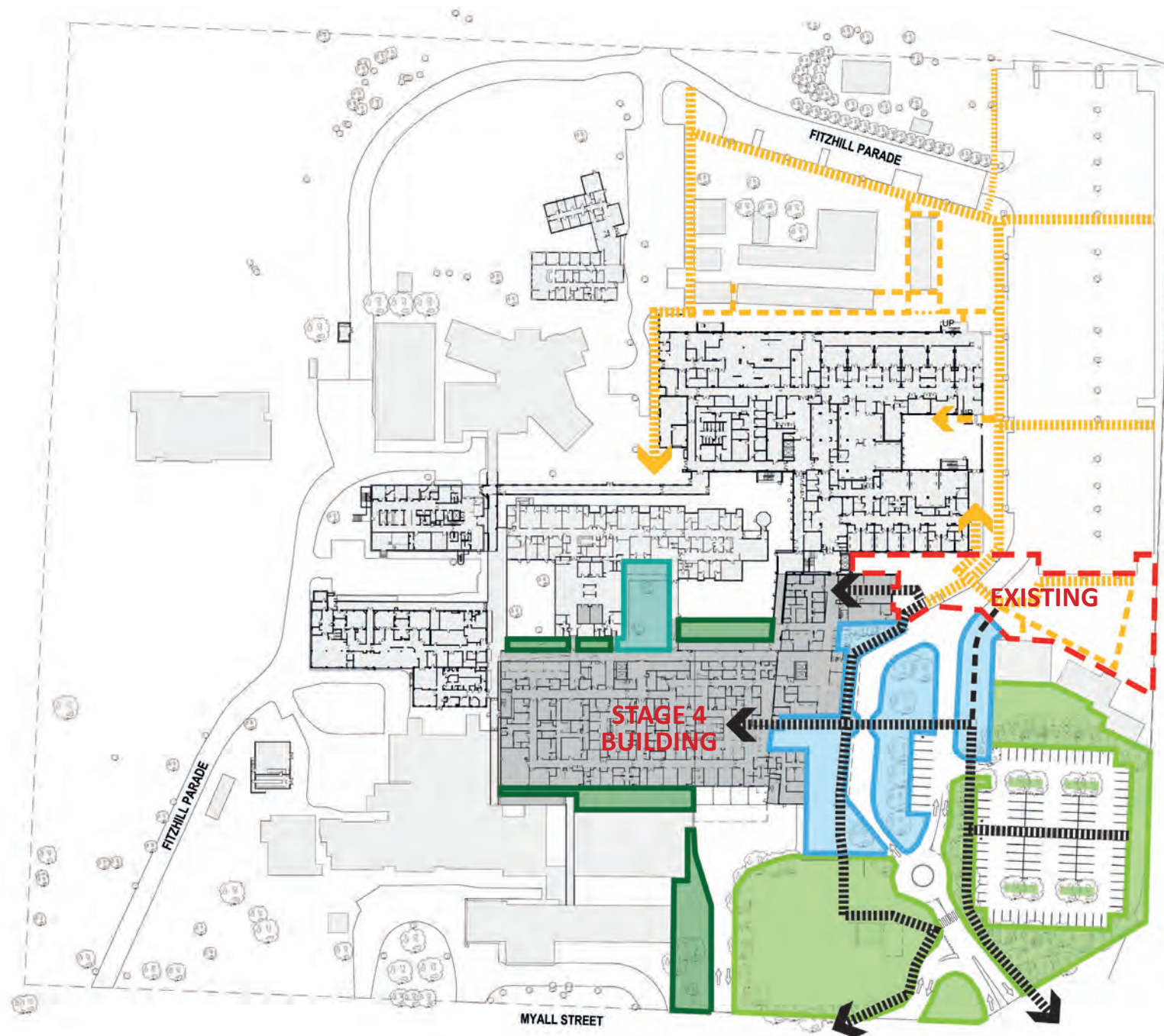
TREE ASSESSMENT

The Stage 3+4 design aims to mitigate loss of existing vegetation and associated fauna, the Vegetation Assessment Plan illustrates the existing trees, trees identified for retention, and trees proposed for removal to facilitate hospital expansion.



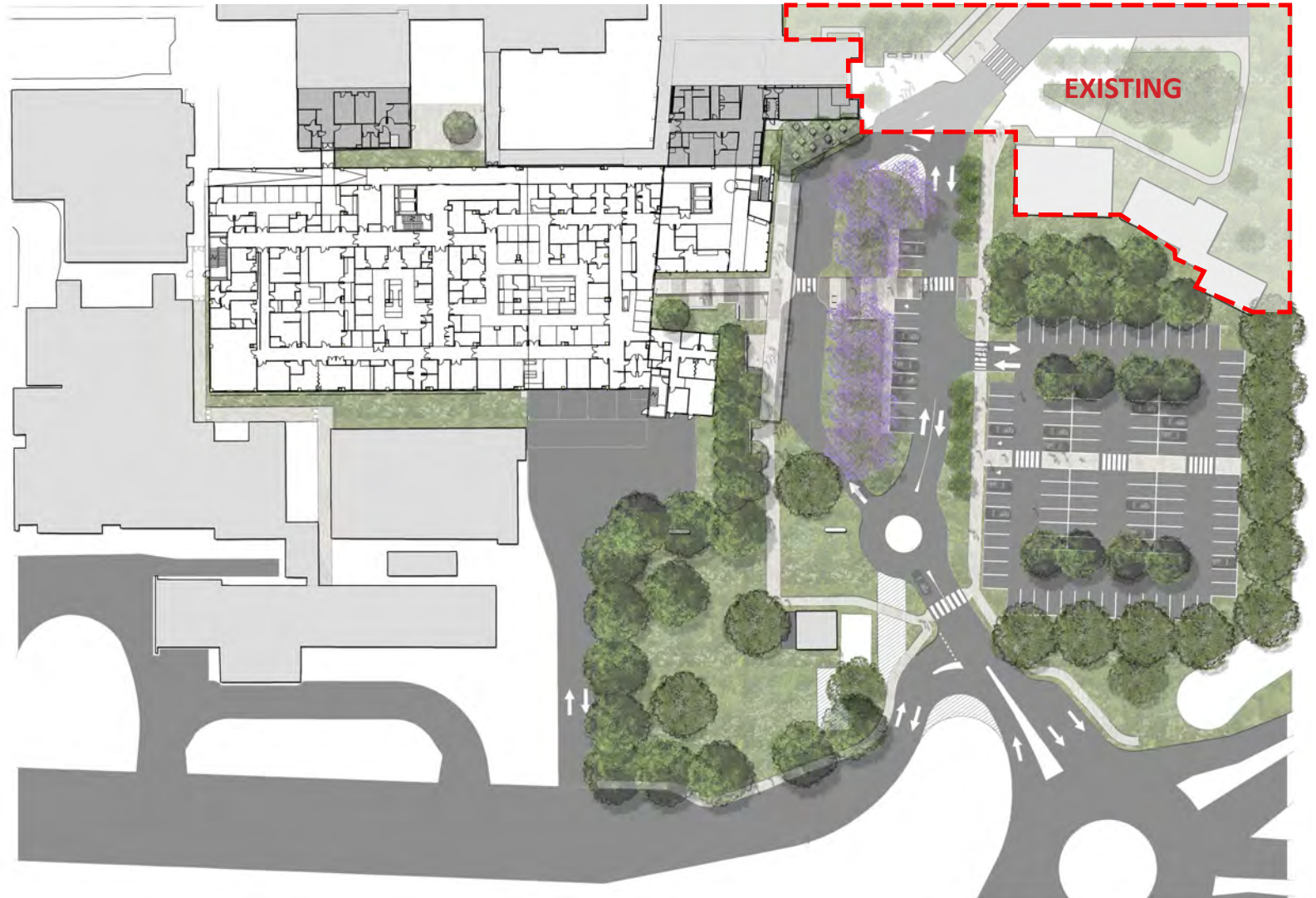
CONCEPT DIAGRAM

The Stage 3+4 design is comprised of 3 distinct landscape zones, the Car Park, Entry, and Hospital Courtyards and peripheral treatments.



CONCEPT PLAN

The Stage 3+4 landscape design has been composed to respond to the objectives of the architecture and support the function of the hospital.



CONCEPT PLAN - Ground

Cafe Seating area with grove of trees in paving to provide shade. Provides connection to discharge lounge courtyard

Landscape improvements to indigenous courtyard

Awning Over walkway and drop off to entry

Clear view sight lines from entry to carpark to promote visual surveillance and safety

Social seating and waiting areas adjacent main entry

Emergency drop off bay

Grove of Trees to provide visual outlook from hospital and shade to seating areas/drop off bay

Social seating and waiting areas adjacent drop off bay

Large feature tree to entry, Chinese elm

Bicycle Parking

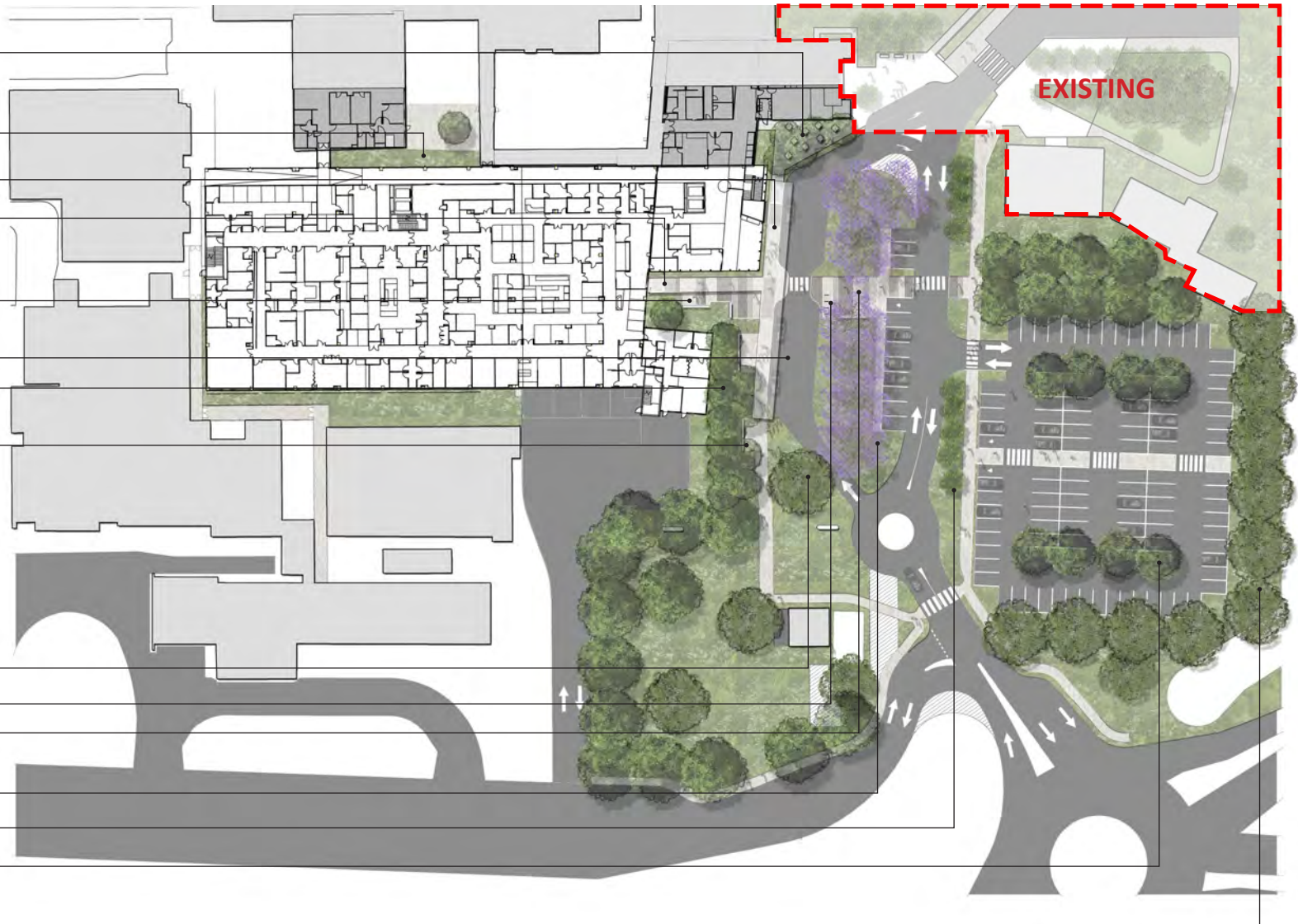
Banded paving to delineate primary pathway connecting carpark and announce emergency entry

Existing Jacaranda trees to be retained

Existing trees to be retained

Garden Swales with tree planting to filter run off and shade carpark

Screen tree planting to campus perimeter



CONCEPT PLAN - Entry Courtyard

Cafe Seating area with grove of trees in paving to provide shade. Provides connection to discharge lounge courtyard

Awning Over walkway and drop off to entry

Banded paving to delineate primary pathway connecting carpark and announce emergency entry

Social seating and waiting areas adjacent main entry

Bicycle Parking

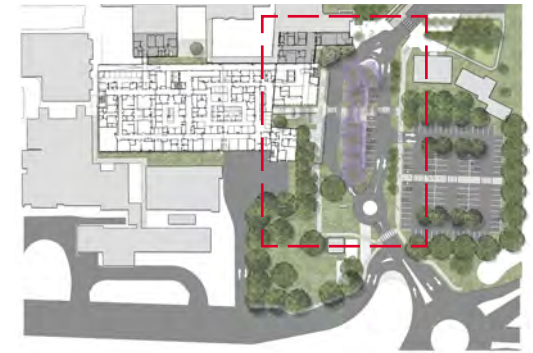
Emergency drop off bay

Social seating and waiting areas adjacent drop off bay

Grove of Trees to provide visual outlook from hospital and shade to seating areas/drop off bay

Existing Jacaranda trees to be retained

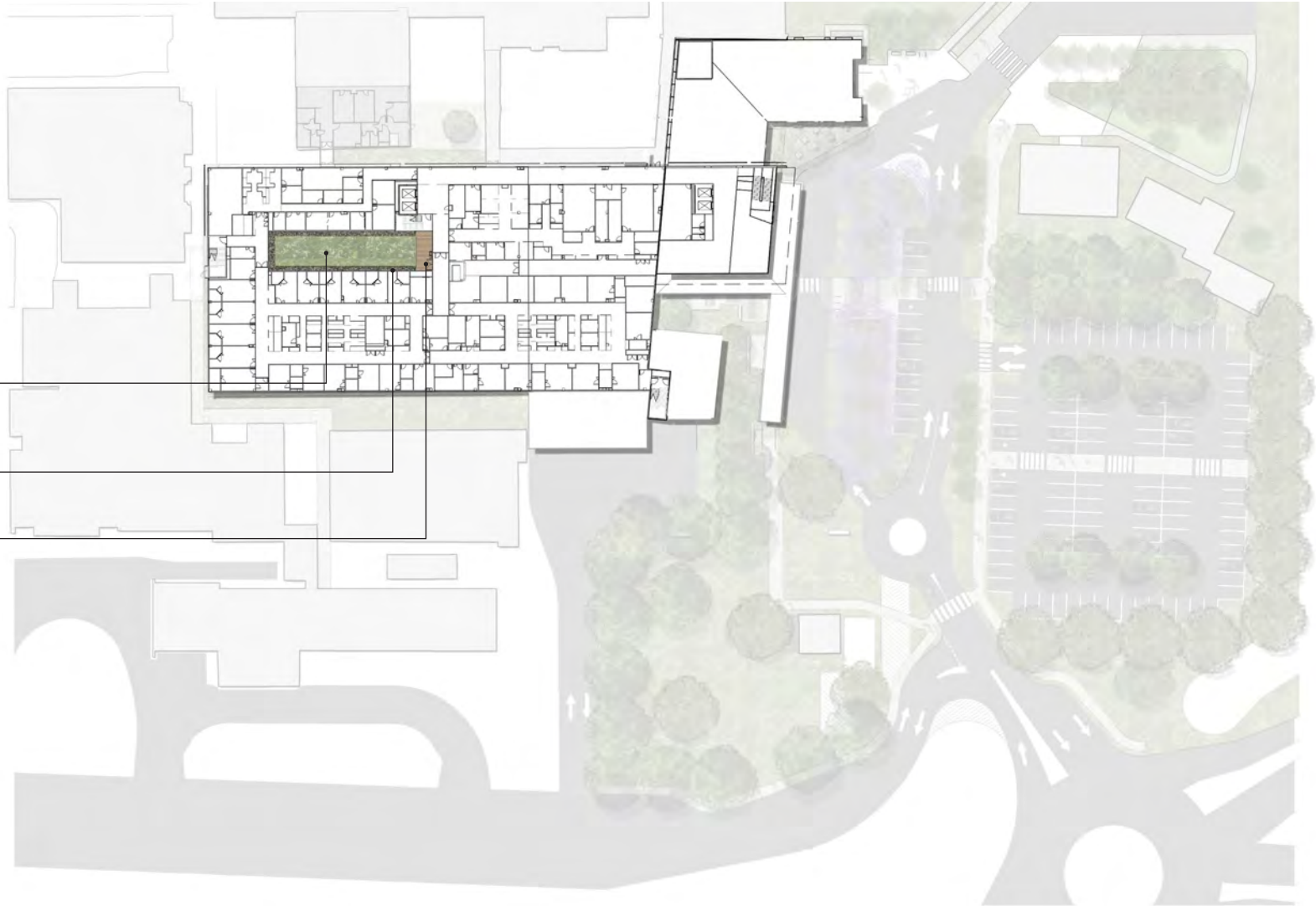
Large feature tree to entry, Chinese elm



KEY PLAN

CONCEPT PLAN - Level 02

- Shallow profile garden to courtyard comprised of low groundcovers and creepers
- Gravel perimeter to provide maintenance access to building facade and windows
- Timber decking area with garden outlook



13.6 ENTRY FORECOURT

The design will respond to the architecture and become fluid expression of landscape, wayfinding and cultural interpretation. The design shall entice visitors at the main entry, flow seamlessly into the lobby and spill out into the central garden. The fluid movement shall be repeated throughout the landscape design to create a continuous landscape to provide small gatherings spaces, therapeutic gardens, verdant and peaceful outlooks and complimentary edge treatment to the buildings and their context.

Principally the design strategy will announce the main Dubbo Hospital entry through a sequential and meaningful landscape experience that is inviting, accessible and inclusive. Enhance and integrate the vehicular and pedestrian entries into the landscape, with the use of soft planting zones that provide structure and places for passive respite.

Use a repetition of design language that is carried through the site materially, complementing the architecture, local vernacular and reinforcing safe vehicular pedestrian and circulation. Enhance the entry experience by using landscape form, planting and discreet but legible signage to help orient visitors and staff alike to various areas of the Dubbo Hospital campus.

The hospital forecourt offers a public landscape connected to the main entry and also functions as the primary set down/pickup point for the hospital. It is both an integration of the way finding strategy and the material palette to create a destination and enhanced sense of arrival.

The forecourt principally acts as a meeting place preceding the main entry, a formal transition between the rural landscape and the healing environment of the hospital. It will provide opportunities for visitor and patient interaction, staff respite and personal reflection. It offers a variety of seating areas within massed planting, shaped to create privacy to bedrooms yet maximise the feeling of connection to the landscape beyond.



13.7 CAR PARK

The new public carpark is located east of the Entry Forecourt. The carpark allows for the major pedestrian entry to the hospital. Creating a strong north - south landscape axis. The landscape design has been developed to ensure the function of the hospital and amenities are maintained should either both or only the northern carpark be delivered in this stage.

The hospital site is intended to be a primary medical facility for the town of Dubbo, so the site must be prepared to accommodate a large population of attendees arriving to the site by car. Therein the parking program needs to be carefully integrated into the overall landscape and site planning of the hospital.

The carpark will be situated within close proximity to the primary entrance in tree-shaded lots integrating WSUD initiatives such as permeable paving and bioswales. The carpark shall be naturally integrated into the adjoining landscape to provide seamless transitions between arrival, entry and peripheral landscapes. The landscape treatment shall comprise drought and frost tolerant local native planting to minimise maintenance and incorporate tall clear trunk trees to provide passive shade for vehicles and pedestrians alike.

The pedestrian wayfinding strategy within the carparks is incorporated into the overall material palette of the site, creating an obvious hierarchy for pedestrians and vehicles. Bioswales become a valuable asset in each carpark, providing a vegetative buffer between carparking bays, controlling stormwater collection and also forming a minor pedestrian access links to the central spine and wayfinding strategy.



13.8 COURTYARD

A number of healing gardens are spread through the Dubbo Hospital, providing excellent places for respite and healing. In addition to the peripheral landscape pockets, the primary courtyard is situated on level 2 offering patients physical connection to external spaces while maintaining privacy and security from within the hospital. Each courtyard is defined by the proposed use and proximity to associated medical departments.

The Entry Courtyard and forecourt garden is defined and celebrated by a strong visual and material connection to landscape and the newly completed works as part of stages 1 and 2. Way finding and circulation cues will be considered as part of the landscape character and therefore highlight the obvious desire lines created by the sensible integration of landscape and architecture.

The existing Indigenous Courtyard is located to the north of Stage 4 Building. A key component of the planning and design is to enable the delivery of culturally appropriate services to the Aboriginal community, and a welcoming and inclusive design response, which encourages the Aboriginal community to access health services. Further consultation with the local Aboriginal community, representatives and Aboriginal stakeholders will identify specific issues to be included in the Functional Brief under "Culturally Appropriate". These may include the providing a strong connection to the landscape, provision of specific landscape features and tree planting, culturally appropriate operational practices, and provision of a healing and bush medicine garden. The design will seek to address intrinsic values of quality, safety, privacy, dignity and respect.

The peripheral landscape treatment will provide an aesthetically pleasing outlook from within the hospital, strengthening its connection to the landscape beyond. The planting palette will be selected to promote attraction of bird life, and seasonal change (including flowers and scents). The function of this landscape is to form a continuous landscape belt connecting the existing and proposed Dubbo Hospital wings, offer an aesthetic and relaxing outlook to patients and staff, while achieving a unified campus identity. This landscape will also facilitate staff pathway connections.



13.9 PLANTING & SUSTAINABILITY

The landscape will reflect not only current best practice ecologically sustainable design but will demonstrate innovation in minimising energy consumption for such a facility in a regional rural site. Sustainable solutions, passive and active are likely to be visible on the site, and within the facility, overlaying an educational story about the ongoing interaction of the building systems and its place. In addition, evidence based feasibility studies and regard to recurring maintenance are both key considerations in developing ESD strategies for this site.

The proposed development shall utilise water sensitive design strategies, implemented to enrich the quality of intermediate landscape spaces and provide control to storm water runoff. The water treatment measures may consist of bio-retention swales; rain gardens, bio-retention ponds and rip rap swales. The system aims to incorporate the following objectives;

- Improve storm water quality prior to discharge
- Highlight water sensitive urban design elements within the planting and circulation strategy for the site.

The planting palette for the site will be made up from predominantly native species, especially those that grow locally in around Dubbo and within the local area. The majority of the plants selected will come from the species list as nominated by the development control plan of the local council. The planting within the forecourt and carpark will be low height to ensure adequate sight lines are maintained for passive and active surveillance, while the landscape to the peripheral will be larger to provide visual outlook and privacy.

Plants will be selected on their abilities to meet certain criteria to achieve the most desirable result for the development. These include;

- Low maintenance to achieve cost effectiveness in delivery and for the future
- Locally significant
- Culturally significant
- Fauna attracting (flowering, colour, scent)
- Non invasive

Within a health facility there are opportunities to execute active gardens through implementation of medicinal and edible plantings. Potential benefits include engagement of patients, therapeutic benefit and seasonal variation. This concept will be further developed in consultation with user groups.



13.10 PLANTING PALETTE

Botanic Name	Common Name
TREES	
<i>Ulmus parvifolia</i>	Chinese Elm
<i>Brachychiton populneus</i>	Kurrajong
<i>Hymenosporum flavum</i>	Native Frangipanni
<i>Tristaniopsis Luschious</i>	Water gum
<i>Waterhousia floribunda</i>	Weeping lily pity
SHRUBS & GRASSES	
<i>Grevillea 'clearview david'</i>	Clearview David Grevillea
<i>Grevillea rosmanfolia</i>	Rosemary Grevillea
<i>Isolepis nodosa</i>	Knobby Club Rush
<i>Juncus pallidus</i>	Pale Rush
<i>Westringia fruticosa</i>	Coastal Rosemary
<i>Liriope spp</i>	Lily Turt
<i>Dianella caerulea</i>	Blue Flax-Lily
<i>Dodonaea viscosa</i>	Hopbush
<i>Abelia grandiflora</i>	Glossy Abelia
<i>Calothamnus villosus</i>	Silky net bush
<i>Pennisetum alopecuroides</i>	Swamp Foxtail
GROUND COVERS	
<i>Myoporum parvifolium</i>	Garden Armor
<i>Chrysocephalum apiculatum</i>	Common Everlasting
<i>Viola hederacea</i>	Native Violet
<i>Dichondra Silver Falls</i>	Silver Falls
<i>Zoysia Tenuifolia</i>	Korean Carpet Grass
<i>Grevillea 'Poorinda Royal Mantle'</i>	Creeping grevillea

