

WOOLWORTHS JN AND JR DC, MOOREBANK NSW



DRAWING REGISTRY - MASTER PLAN

JR-SK-A-00-0000	JN AND JR MASTER PLAN COVER SHEET
JR-SK-A-0-9403	SITE MASTER PLAN
JR-SK-A-0-9407	MASTER PLAN - SUN / SHADE STUDY SHEET 01
JR-SK-A-0-9408	MASTER PLAN - SUN / SHADE STUDY SHEET 02
JR-SK-A-0-9409	MASTER PLAN - SUN / SHADE STUDY SHEET 03
JR-SK-A-0-9410	TYPICAL PYLON, PILLAR SIGNS & BUILDING SIGNAGE (ELEVATIONS & DETAILS)

SITE MASTER PLAN AREAS

JR SITE AREA	143441 m ²	14.34 hectare
JN SITE AREA	115064 m ²	11.51 hectare

DC GROSS LETTABLE FLOOR AREAS

JR DC GROSS LETTABLE GROUND FLOOR AREA	34640 m ²	3.46 hectare
JN DC GROSS LETTABLE GROUND FLOOR AREA	40749 m ²	4.07 hectare

JR - HEAVY VEHICLE PARKING

CHEVRON A-DOUBLE	10
CHEVRON ARTICULATED	6
CHEVRON B-DOUBLE	10
PAN PARKING - WEST	70
PAN PARKING - WEST GOODS OUTBOUND	23
PAN/RIGID PARKING - NORTH	45
PRIME PARKING - WEST	54
PRIME PARKING - SOUTH	17

Grand total: 235

JR - LIGHT VEHICLE PARKING

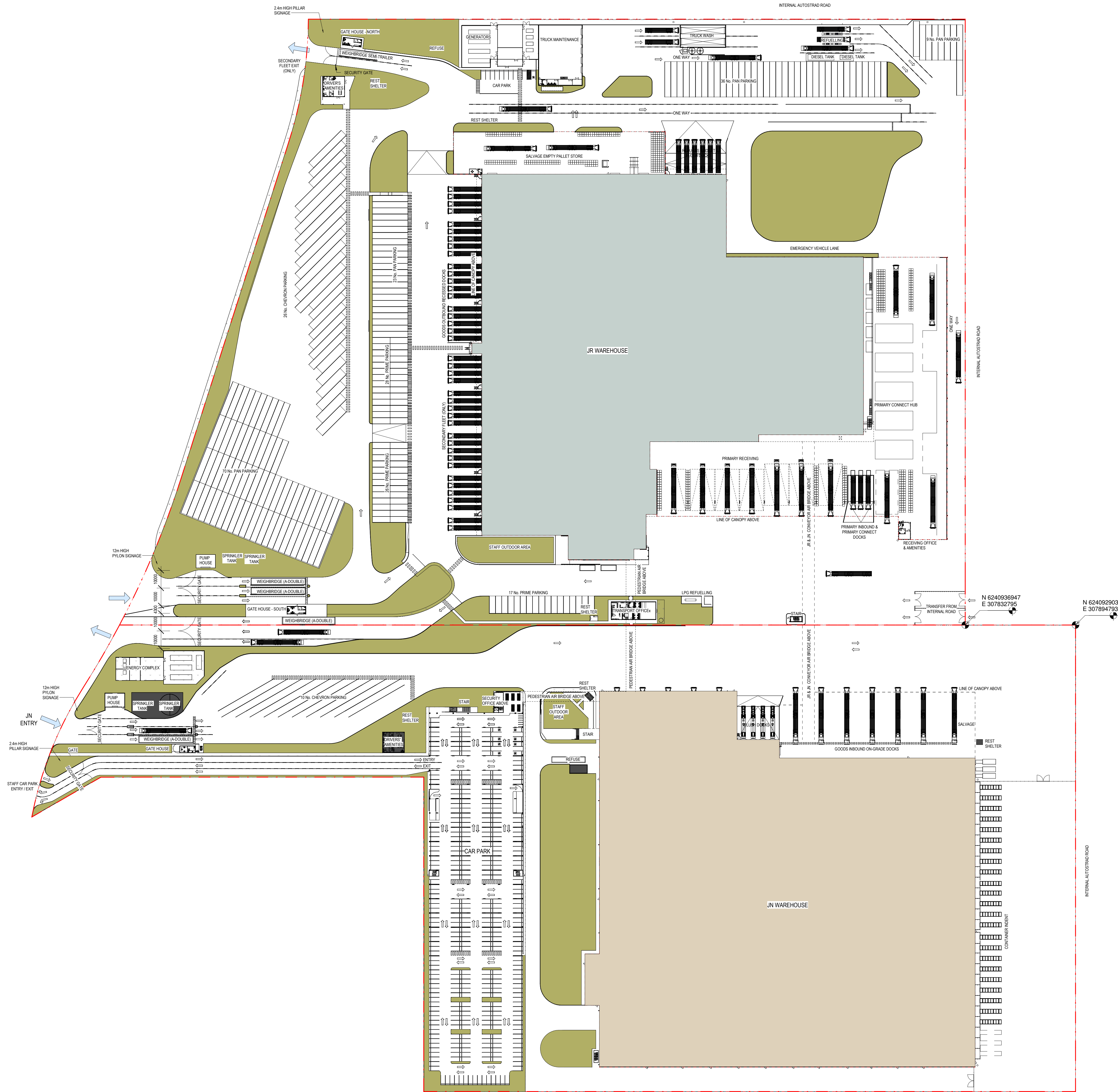
BICYCLE (INTERNAL)	20
CAR PARK DISABLED PERSON	1
CAR PARKING	9

JN - HEAVY VEHICLE PARKING

CHEVRON A-DOUBLE	10
------------------	----

JN - LIGHT VEHICLE PARKING

BICYCLE	40
CAR PARKING	717
CAR PARKING DISABLED PERSON	8
MOTORBIKE	6



1 SITE MASTER PLAN
1:1000@A0

ISSUE	DATE	DESCRIPTION
L	19.06.20	ISSUED FOR APPROVAL
K	10.06.20	ISSUED FOR INFORMATION
J	14.05.20	ISSUES REVISED
I	24.04.20	ISSUED FOR APPROVAL
H	17.04.20	ISSUED FOR INFORMATION
G	06.04.20	ISSUED FOR CLIENT APPROVAL
F	01.04.20	ISSUED FOR CLIENT APPROVAL
E	17.03.20	ISSUED FOR INFORMATION

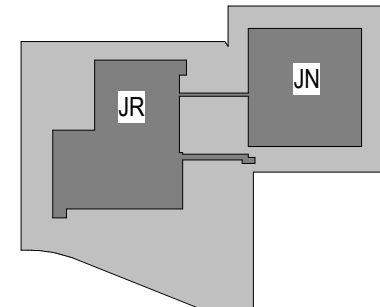
ISSUED BY	CLIENT
ARCHITECT	Woolworths Group
ARCHITECT	1 Woolworths Way Bella Vista NSW 2153
ARCHITECT	P 02 8855 0000
ARCHITECT	ARCHITECT
ARCHITECT	BELL Architecture
ARCHITECT	Mail Bell Nominated Architect NSW 9996, Suite 206, 25-29 Berry Street North Sydney NSW 2060, PO Box 1037 North Sydney NSW 2059, P 02 8904 1650



SHEET SERIES CODE - ARCHITECTURAL
0000 GENERAL
0001 SITE
0002 PLANS
0003 CONCEPT PLAN
0004 CONCEPT PLAN
0005 SITE & FINISHES

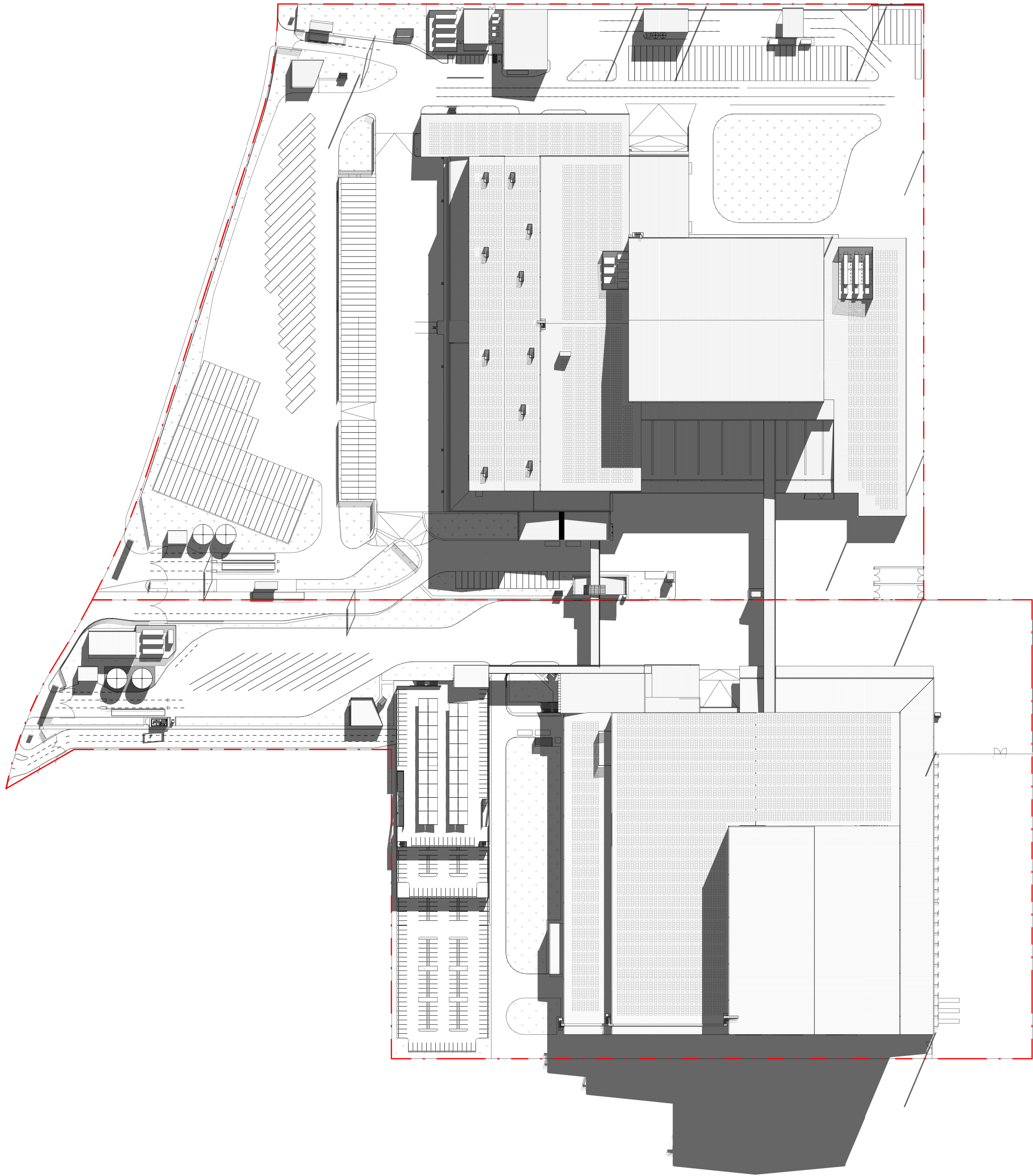
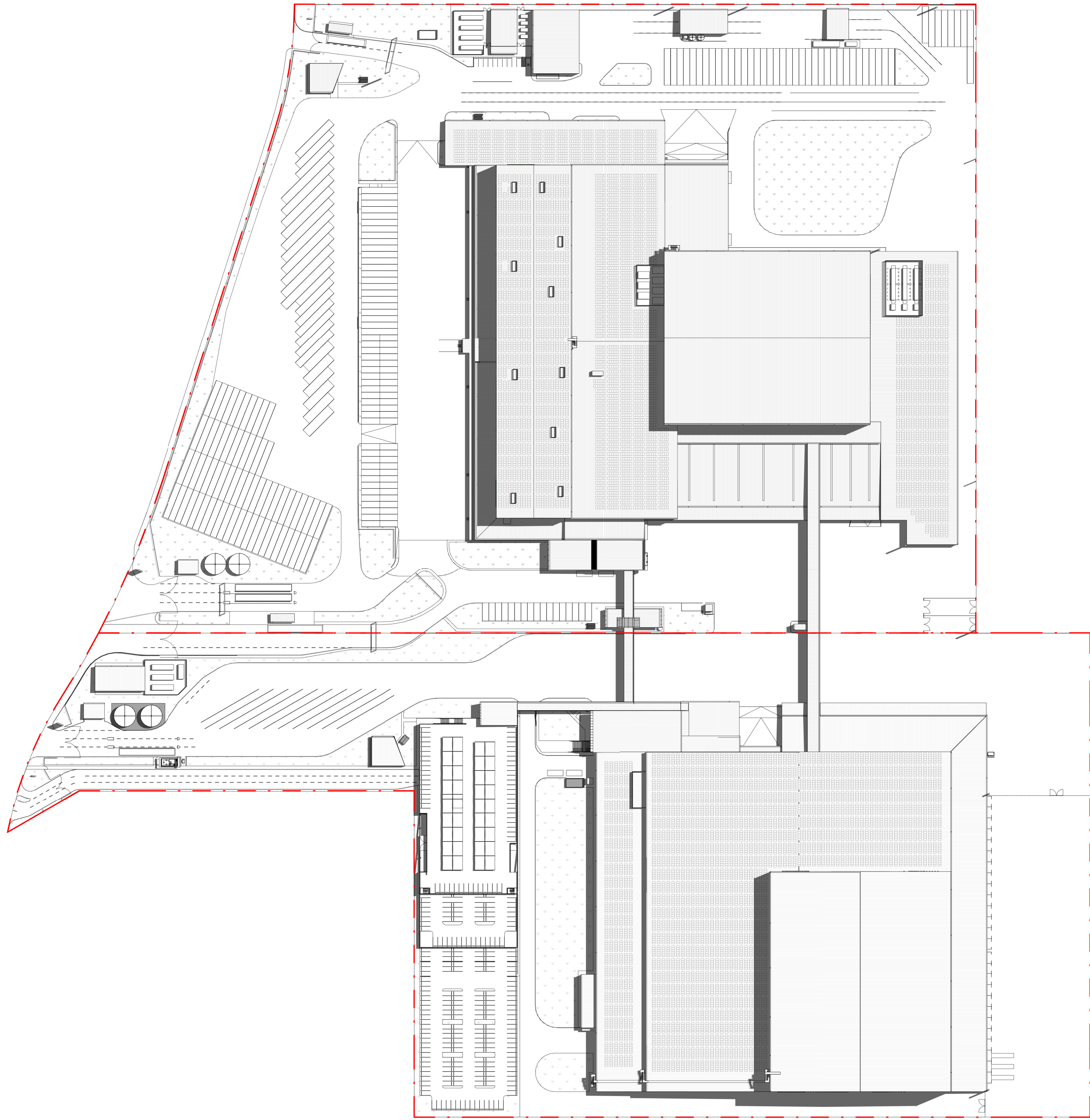
BUILDING CODES
0000 GENERAL
0001 SITE
0002 PLANS
0003 CONCEPT PLAN
0004 CONCEPT PLAN
0005 SITE & FINISHES

KEY PLAN



JOB TITLE	WOOLWORTHS DC PROPOSED JR, MOOREBANK AVE, MOOREBANK, NSW
SCALE BAR	0m 20m 40m 60m 80m 100m
JOB NO	BAS190054
DRAWING SCALE @ A0	1:1000
DRAWN BY	GR
CHK BY	DO'D

DRAWING TITLE	SITE MASTER PLAN
DRAWING NO	JR-SK-A-0-9403
STATUS	P
REVISION	L



1 MASTER PLAN - SUN STUDY 10AM - 21ST DECEMBER (SUMMER SOLSTICE)
1:1500@A0

2 MASTER PLAN - SUN STUDY 10AM - 21ST JUNE (WINTER SOLSTICE)
1:1500@A0

THIS DRAWING IS OWNED BY AND REMAINS THE PROPERTY OF BELL ARCHITECTURE. ALL RIGHTS RESERVED.
C. REPRODUCTION OR USE OF THIS DRAWING WITHOUT THE PERMISSION OF THE ARCHITECT IS ILLEGAL. THE
CLIENT IS ADVISED TO USE THIS DRAWING FOR THE WORK SPECIFIC TO THE SITE SUBJECT TO THE FULL
APPROVAL OF THE ARCHITECT. THE ARCHITECT'S LIABILITY IS LIMITED TO THE DESIGN AND CONSTRUCTION OF THE
CLIENT'S ARCHITECTURAL DESIGN FOR THIS PROJECT. ALL DIMENSIONS SHALL BE USED. SCALE: 1:1500.
THE CLIENTS THE CONTRACTOR SHALL VERIFY ALL DIMENSIONS ON SITE PRIOR TO THE COMMENCEMENT
OF WORK.

FOR APPROVAL

16/03/2024 Woolworths Architecture Centre - 1700 Westmore
10/03/2024 15/03/24
10/03/2024 15/03/24

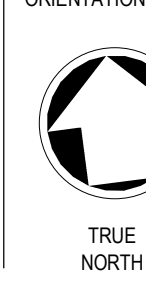
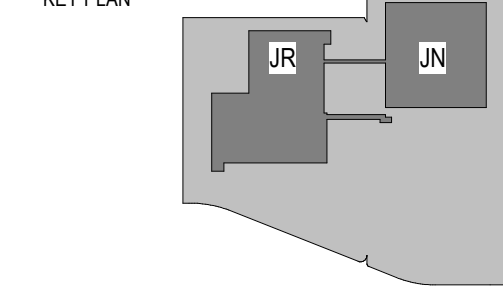
ISSUE	DATE	DESCRIPTION
A	16/03/24	ISSUED FOR APPROVAL
A	24/03/24	ISSUED FOR APPROVAL

CLIENT	Woolworths Group 1 Woolworths Way Bella Vista NSW 2153 P 02 8855 0000
ARCHITECT	BELL Architecture Matt Bell Nominated Architect NSW 9666, Suite 206, 25-29 Berry Street North Sydney NSW 2060, PO Box 1037 North Sydney NSW 2059, P 02 8904 1650
MT	ARCHITECT
GR	ISSUED BY



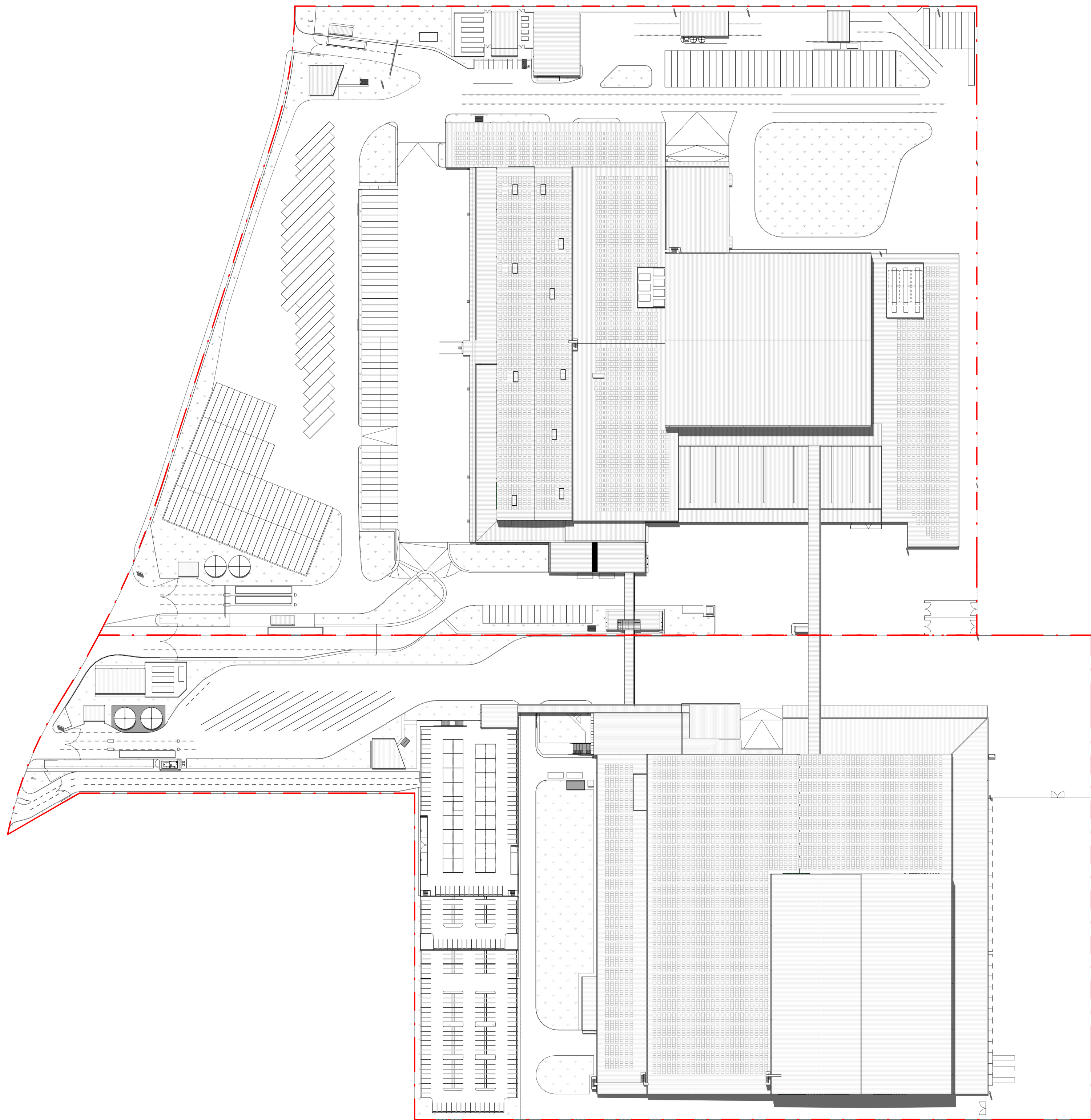
SHEET SERIES CODE - ARCHITECTURAL
0000 GENERAL 1000 SITE 2000 PLANS 2100 CONCRETE PROFILED PLAN 2200 CEILING PLANS 2300 ROOF PLANS 2400 FITE & FINISHES
3100 AL ELEVATIONS 3200 DOOR/WINDOW 4000 SECTIONS 4100 DETAILS 4200 NET AREAS 5000 GENERAL NOTES

BUILDING CODES
00 0000 ROCK & NOTES 01 SITE WORKS 02 0000 INC. ADMIN & OPERATION OFFICE 03 0000 OFFICE 04 0000 OFFICE 05 0000 OFFICE 06 0000 OFFICE 07 0000 OFFICE 08 0000 OFFICE 09 0000 OFFICE 10 0000 OFFICE 11 0000 OFFICE 12 0000 OFFICE 13 0000 OFFICE 14 0000 OFFICE 15 0000 OFFICE 16 0000 OFFICE 17 0000 OFFICE 18 0000 OFFICE 19 0000 OFFICE 20 0000 OFFICE 21 0000 OFFICE 22 0000 OFFICE 23 0000 OFFICE 24 0000 OFFICE 25 0000 OFFICE 26 0000 OFFICE 27 0000 OFFICE 28 0000 OFFICE 29 0000 OFFICE 30 0000 OFFICE 31 0000 OFFICE 32 0000 OFFICE 33 0000 OFFICE 34 0000 OFFICE 35 0000 OFFICE 36 0000 OFFICE 37 0000 OFFICE 38 0000 OFFICE 39 0000 OFFICE 40 0000 OFFICE 41 0000 OFFICE 42 0000 OFFICE 43 0000 OFFICE 44 0000 OFFICE 45 0000 OFFICE 46 0000 OFFICE 47 0000 OFFICE 48 0000 OFFICE 49 0000 OFFICE 50 0000 OFFICE 51 0000 OFFICE 52 0000 OFFICE 53 0000 OFFICE 54 0000 OFFICE 55 0000 OFFICE 56 0000 OFFICE 57 0000 OFFICE 58 0000 OFFICE 59 0000 OFFICE 60 0000 OFFICE 61 0000 OFFICE 62 0000 OFFICE 63 0000 OFFICE 64 0000 OFFICE 65 0000 OFFICE 66 0000 OFFICE 67 0000 OFFICE 68 0000 OFFICE 69 0000 OFFICE 70 0000 OFFICE 71 0000 OFFICE 72 0000 OFFICE 73 0000 OFFICE 74 0000 OFFICE 75 0000 OFFICE 76 0000 OFFICE 77 0000 OFFICE 78 0000 OFFICE 79 0000 OFFICE 80 0000 OFFICE 81 0000 OFFICE 82 0000 OFFICE 83 0000 OFFICE 84 0000 OFFICE 85 0000 OFFICE 86 0000 OFFICE 87 0000 OFFICE 88 0000 OFFICE 89 0000 OFFICE 90 0000 OFFICE 91 0000 OFFICE 92 0000 OFFICE 93 0000 OFFICE 94 0000 OFFICE 95 0000 OFFICE 96 0000 OFFICE 97 0000 OFFICE 98 0000 OFFICE 99 0000 OFFICE 100 0000 OFFICE

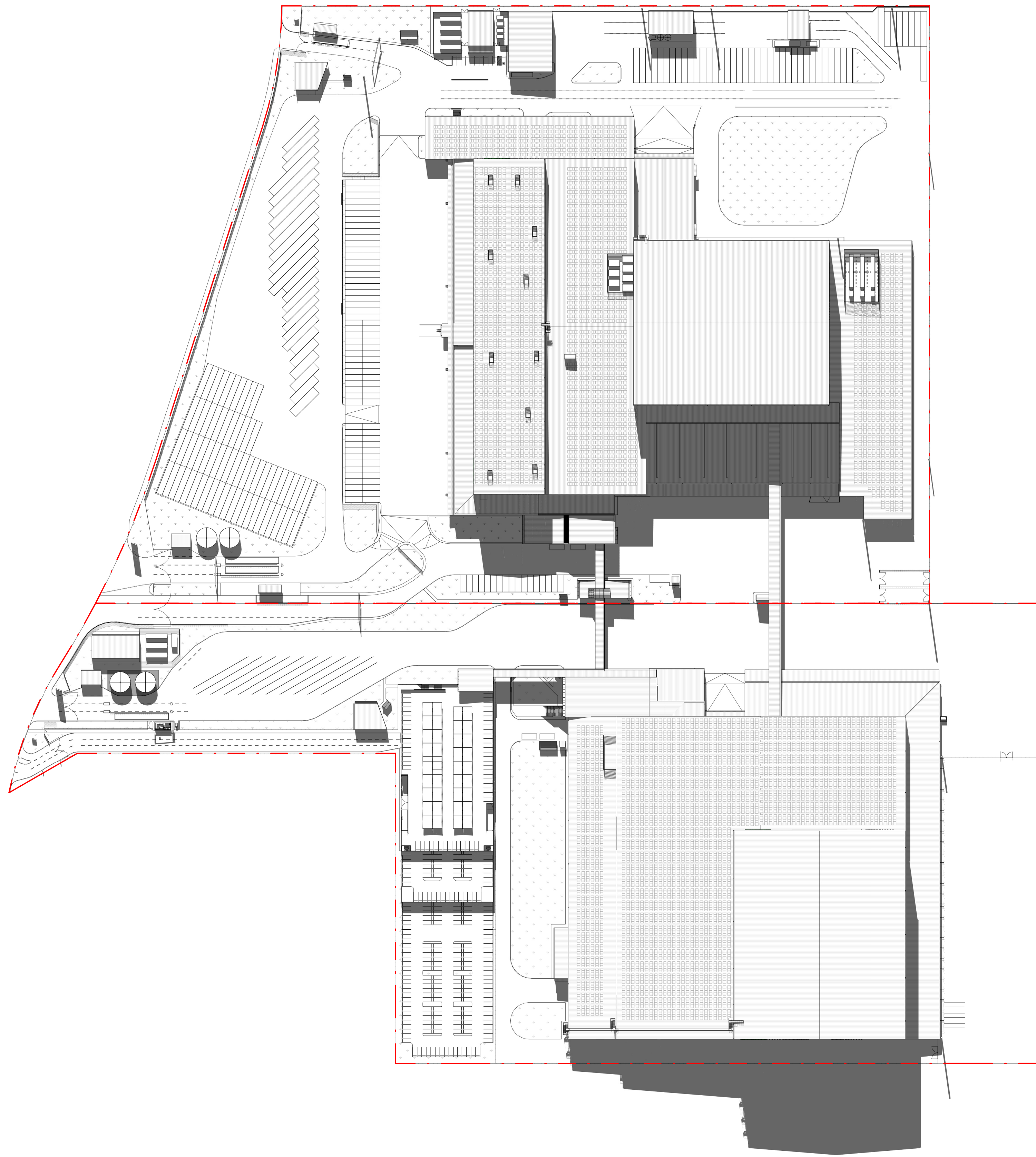


JOB TITLE	WOOLWORTHS DC PROPOSED JR, MOOREBANK AVE, MOOREBANK, NSW
JOB NO	BAS190054
DRAWING SCALE @ A0	1:1500
DRAWN BY	MT
CHK BY	D'OD
DRAWING NO	JR-SK-A-0-9407
STATUS	P
REVISION	B

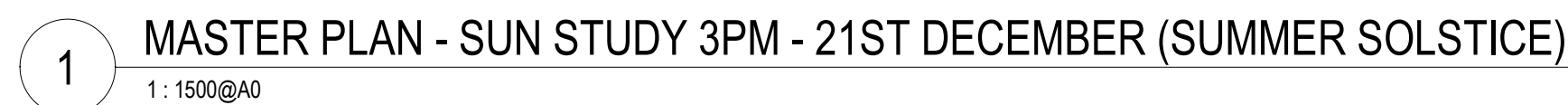
DRAWING TITLE	MASTER PLAN - SUN / SHADE STUDY SHEET 01
---------------	------------------------------------------



1 MASTER PLAN - SUN STUDY 12PM - 21ST DECEMBER (SUMMER SOLSTICE)
1:1500@A0



2 MASTER PLAN - SUN STUDY 12PM - 21ST JUNE (WINTER SOLSTICE)
1:1500@A0





<p>FOR APPROVAL</p>		<p>ISSUED FOR APPROVAL</p>		<p>DATE</p>		<p>DESCRIPTION</p>		<p>ISSUED BY</p>		<p>Mod-Bell Nominated Architect NSW 9686, Suite 209, 25-29 Berry Street North Sydney NSW 2060, PO Box 1037 North Sydney NSW 2059, P 02 894 1650</p>		<p>ARCHITECT</p> <p>BELL Architecture</p>		<p>CLIENT</p> <p>Woolworths</p> <p>1 Woolworths Valley Bells Vista NSW 2153</p> <p>P 02 8885 0000</p>		<p>SHEET SERIES CODE - ARCHITECTURAL</p> <p>000-GENERAL 000-DETAILS 200-PLANS 210-C/C, PROFILED PLANS 200-SECTION 200-CLADDING PLANS 300-ROOF PLANS 200-ATTRACTIONS</p>		<p>3100-ELEVATIONS 200-DOOR/WINDOW 300-DETAILS 000-SECTION 000-DETAILS 000-DETAILS 700-JOINERY 900-GENERAL NOTES</p>		<p>BUILDING CODES</p> <p>00-000 INDEX & NOTES 0-000 INDEX A-000 WAREHOUSE IN ADMIN & OPERATION OFFICE B-000 ROOF C-000 TRANSPORT OFFICE D-000 DRIVER AMENITIES E-000 SUPERSTORY COMPLEX F-000 FUEL TANK AND PUMP HOUSE G-000 GATEHOUSE H-000 TRUCK WASH & TRUCK MAINTENANCE</p>		<p>KEY PLAN</p>		<p>ORIENTATION</p> <p>TRUE NORTH</p>		<p>DRAWING TITLE</p> <p>WOOLWORTHS DC PROPOSED JR, MOOREBANK AVE, MOOREBANK, NSW</p> <p>SCALE BAR</p> <p>0m 1m 2m 3m 4m 5m</p>		<p>DRAWING NO</p> <p>BAS190054</p>		<p>DRAWING SCALE @ AD</p> <p>As indicated</p>		<p>DRAWN BY</p> <p>MT</p>		<p>CHECK BY</p> <p>DOD</p>		<p>DRAWING NO</p> <p>JR-SK-A-0-9410</p>		<p>STATUS</p> <p>P</p>		<p>REVISION</p> <p>B</p>	