

What is a depot? See page 5 of the Guidance Notes.

**PART C - Dangerous Goods Storage** Complete one section per depot.

If you have more depots than the space provided, photocopy sufficient sheets first.

Depot Number	Type of depot (see page 5)	Depot Class	Maximum storage capacity
1	ABOVE GROUND <i>cylander store.</i>	2.1	210 kg

UN Number	Proper Shipping Name	PG Class (I, II, III)	Product or common name	Typical quantity	Unit, e.g. L, kg, m <sup>3</sup>
1075	PETROLEUM GASES LIQUEFIED	2.1	L.P.G.	210	kg

Depot Number	Type of depot (see page 5)	Depot Class	Maximum storage capacity

UN Number	Proper Shipping Name	PG Class (I, II, III)	Product or common name	Typical quantity	Unit, e.g. L, kg, m <sup>3</sup>

Depot Number	Type of depot (see page 5)	Depot Class	Maximum storage capacity

UN Number	Proper Shipping Name	PG Class (I, II, III)	Product or common name	Typical quantity	Unit, e.g. L, kg, m <sup>3</sup>

Depot Number	Type of depot (see page 5)	Depot Class	Maximum storage capacity

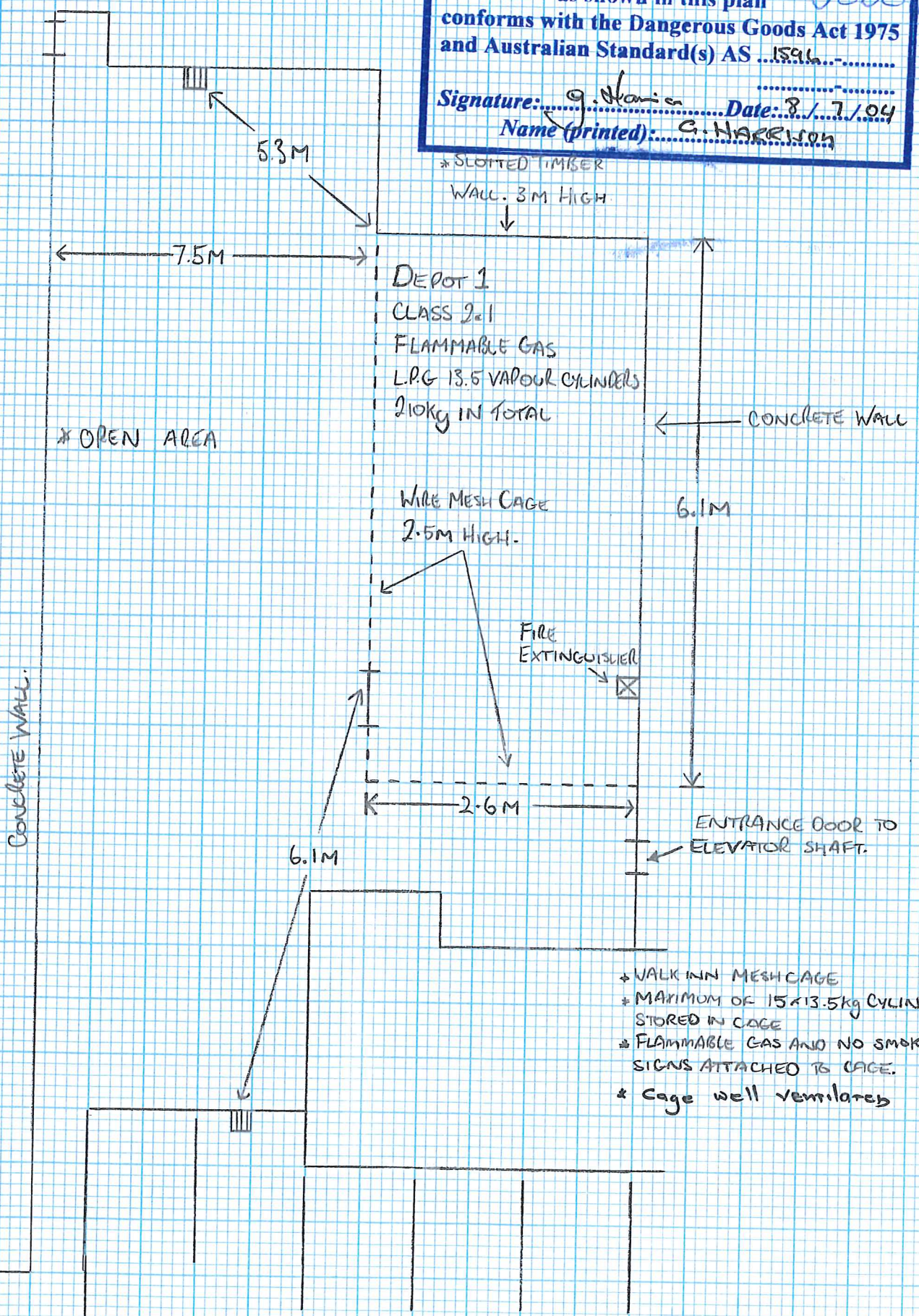
UN Number	Proper Shipping Name	PG Class (I, II, III)	Product or common name	Typical quantity	Unit, e.g. L, kg, m <sup>3</sup>

PONTOON BAR  
 LOCKLE BAY WHARF  
 LOCKLE BAY

Depot (Title) **Above Ground**  
 for (Quantity) **210 kg**  
 of DG Class **2.1** and PG **-**

as shown in this plan  
 conforms with the Dangerous Goods Act 1975  
 and Australian Standard(s) AS 1596

Signature: *G. Harrison* Date: **8/7/04**  
 Name (printed): **G. HARRISON**



WHEAT ROAD

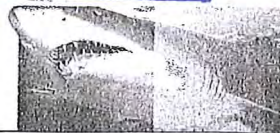
SCALE  
 Metro

E

# AQUARIUM

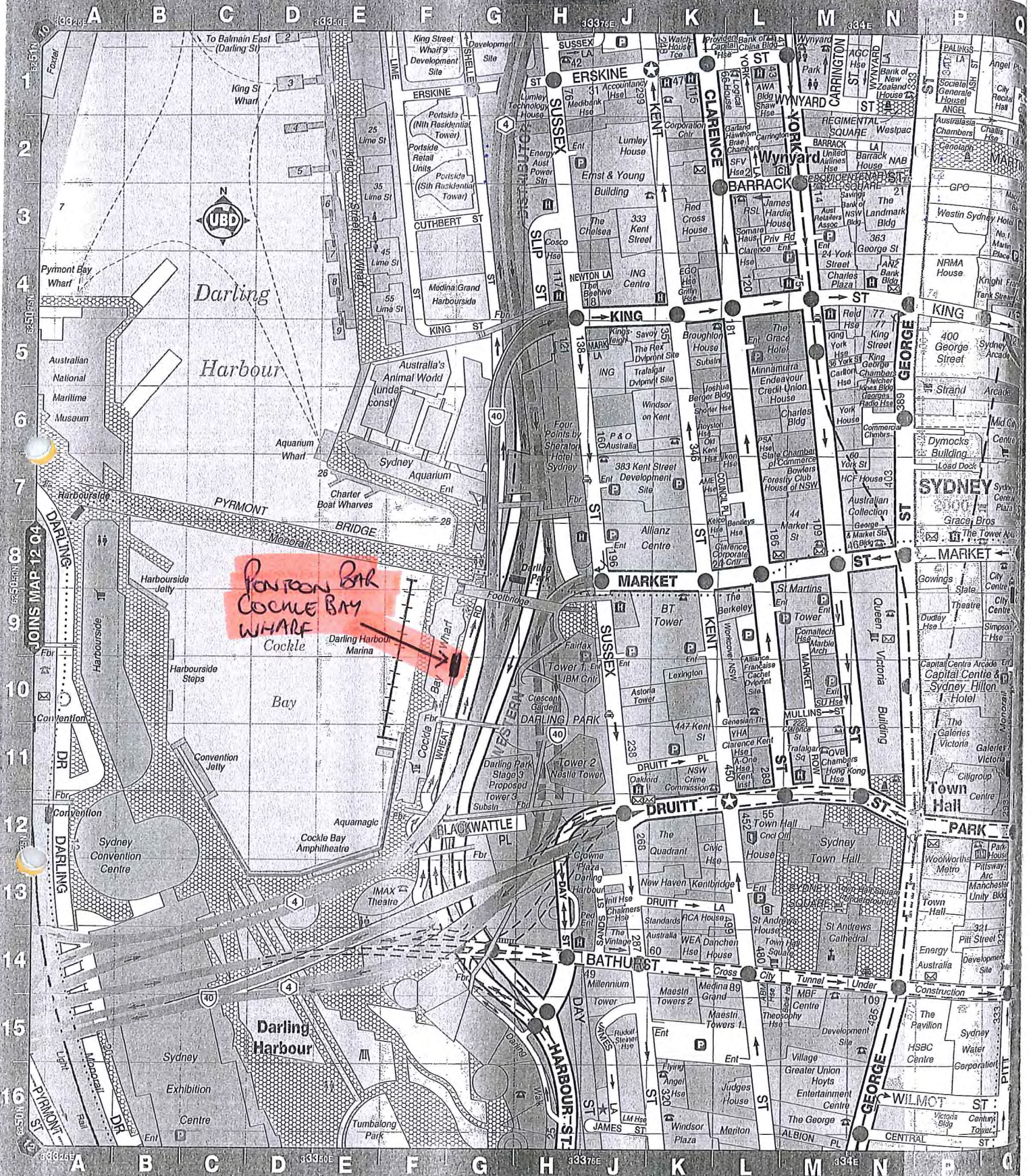
SYDNEY DARLING HARBOUR

OPEN EVERY DAY  
9am - 10pm  
ENQUIRIES: 02 9262 2300

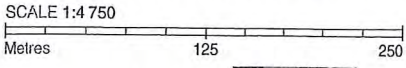


6 GRID SQUARES MEASURE 1km

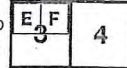
JOINS MAP C



COPYRIGHT © UNIVERSAL PRESS PTY LTD (PUBLISHER) 2004



THESE MAPS ARE ENLARGED FROM A SECTION OF MAP 3



- |  |                           |                         |                          |
|--|---------------------------|-------------------------|--------------------------|
| Commercial, Government & Public Buildings..... | Park, Reserve & Oval..... | AMBULANCE STATION.....* | CAR PARK.....            |
| Major Retailers & Shopping Complexes.....      | Hospital, School.....     | BARBECUE.....*          | COLLEGE - PRIVATE.....   |
| Places of Interest.....                        | Hotel & Motel.....        | BOAT RAMP.....          | COLLEGE - PUBLIC.....    |
|  | Mall, Plaza.....          | BOWLING CLUB/GREEN..... | CYCLEWAY.....            |
|  |                           | CAMPING AREA.....       | DISTANCE FROM GPO.....   |
|  |                           | CARAVAN PARK.....       | EMERGENCY TELEPHONE..... |

JOINS MAP G

