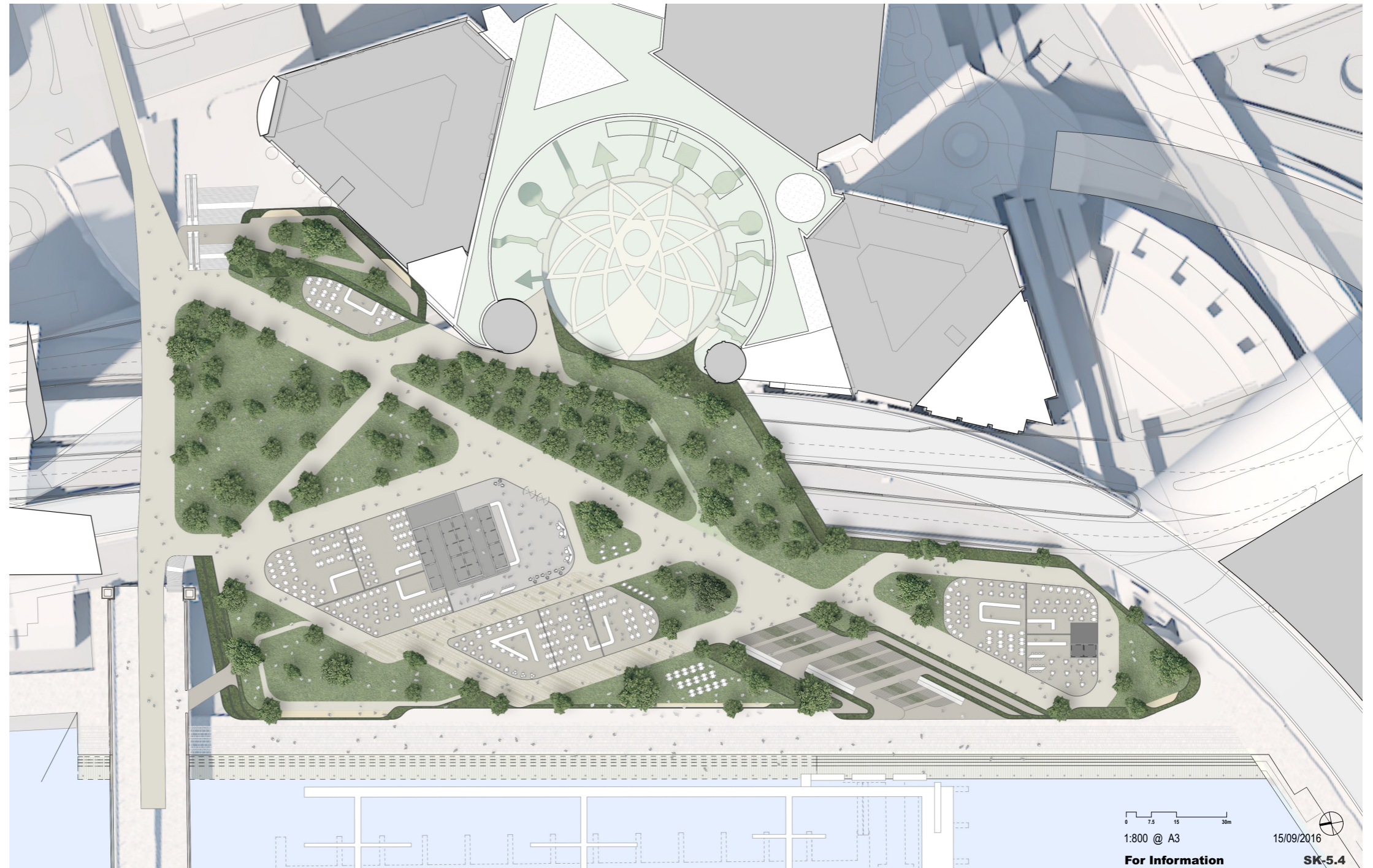


Indicative Landscape Plan



Examples of landscaped park as urban connection.

The design of this significant space to be developed in the Stage 2 submission should achieve the following objectives:

- Rich day and night experiences
- Provide appropriate amenity for an 18 hour / 7 days a week site
- Allow for a diverse range of events and overlays
- Encourages use by all ages
- Inviting and accessible entry from Market Street and Pyrmont Bridge
- Provide large gathering spaces and intimate areas for diversity of use
- Balance the event spaces with recreational spaces and circulation spaces

Include a variety of exemplar landscape spaces including, parklands, terraces, and appropriate planting, materials and water features

Improve biodiversity and environmental protection of the locale including capturing air pollutants, filtering rain water, reducing the urban heat island and improving the urban aesthetic.

Have good environmental amenity including solar access, wind mitigation and acoustic mitigation from the roadways below.

Incorporate heritage and art interpretation overlay

Communicate the Precinct as a whole and help visitors feel a sense of arrival and departure in the space. The elements must create a distinctive place that retains its character when activity is absent and accommodates all people in their diversity.

Provide a network of connected open spaces including the connection of Crescent Garden.



- Lots further than 400m walking distance of an open space larger than Wynyard Park
- Lots further than 200m walking distance of all open spaces
- Lots further than 400m and 200m walking distance of open space
- 400m analysis open spaces
- 200m analysis open spaces

Existing open space deficiency analysis.

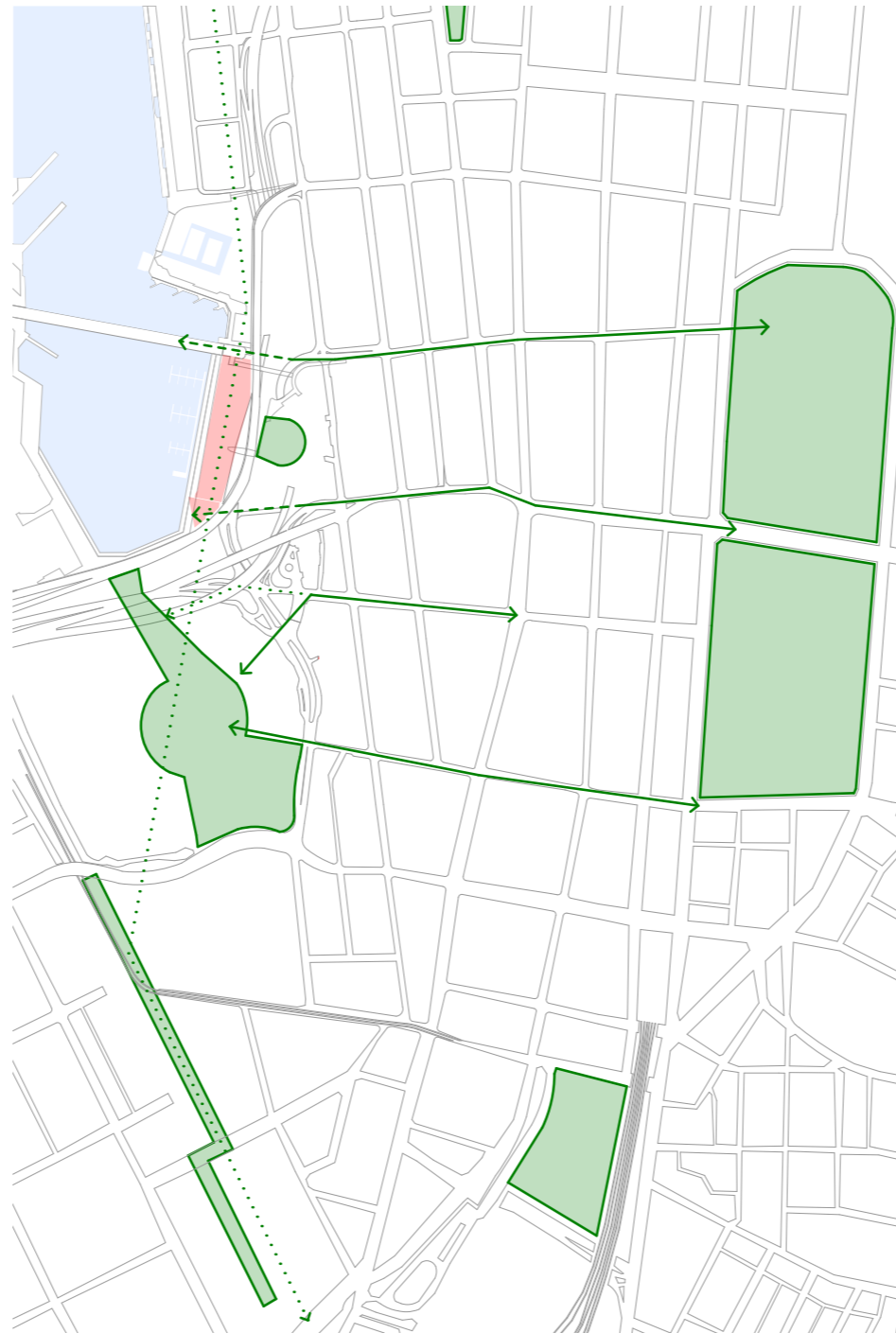
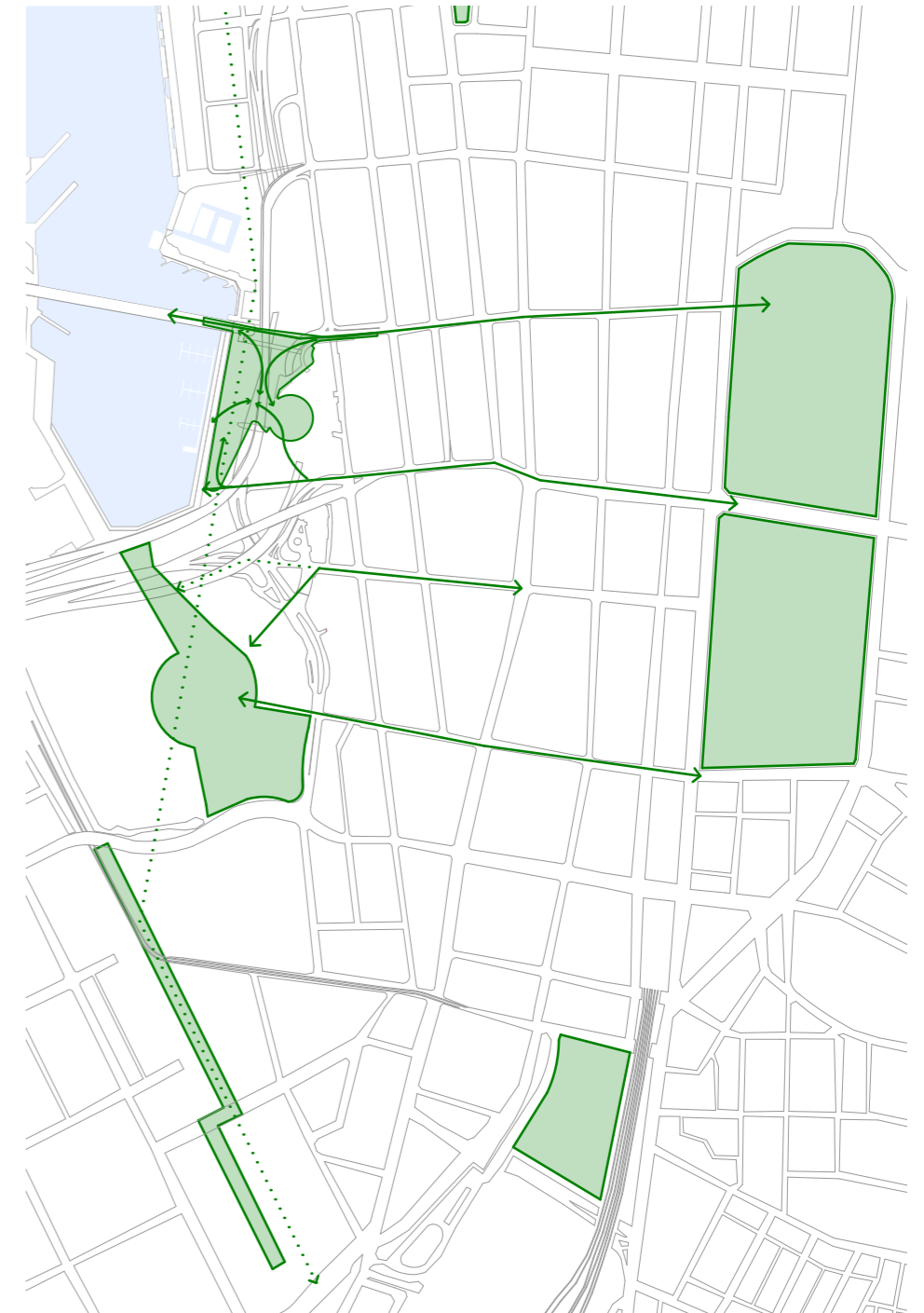


Diagram highlighting the disconnection between Crescent Garden and other green spaces in city CBD.



Connection between the proposed new urban landscape and other green spaces.

Crescent Garden

Crescent Garden has a circular plan profile and sits between the connected lobbies of Darling Park 1, 2 and 3. The garden enjoys some acoustic screening from Western Distributor (only via soft landscaping) and enjoys good solar access. The garden has public seating, sheltered pavilions and other landscape features. Currently Crescent Garden is not well utilised, and is not well connected.

The proposal's development envelope interfaces with the Western edge of Crescent Garden to provide a linked landscaped space from the lobbies of Darling Park towers over the freeway and to the water promenade.

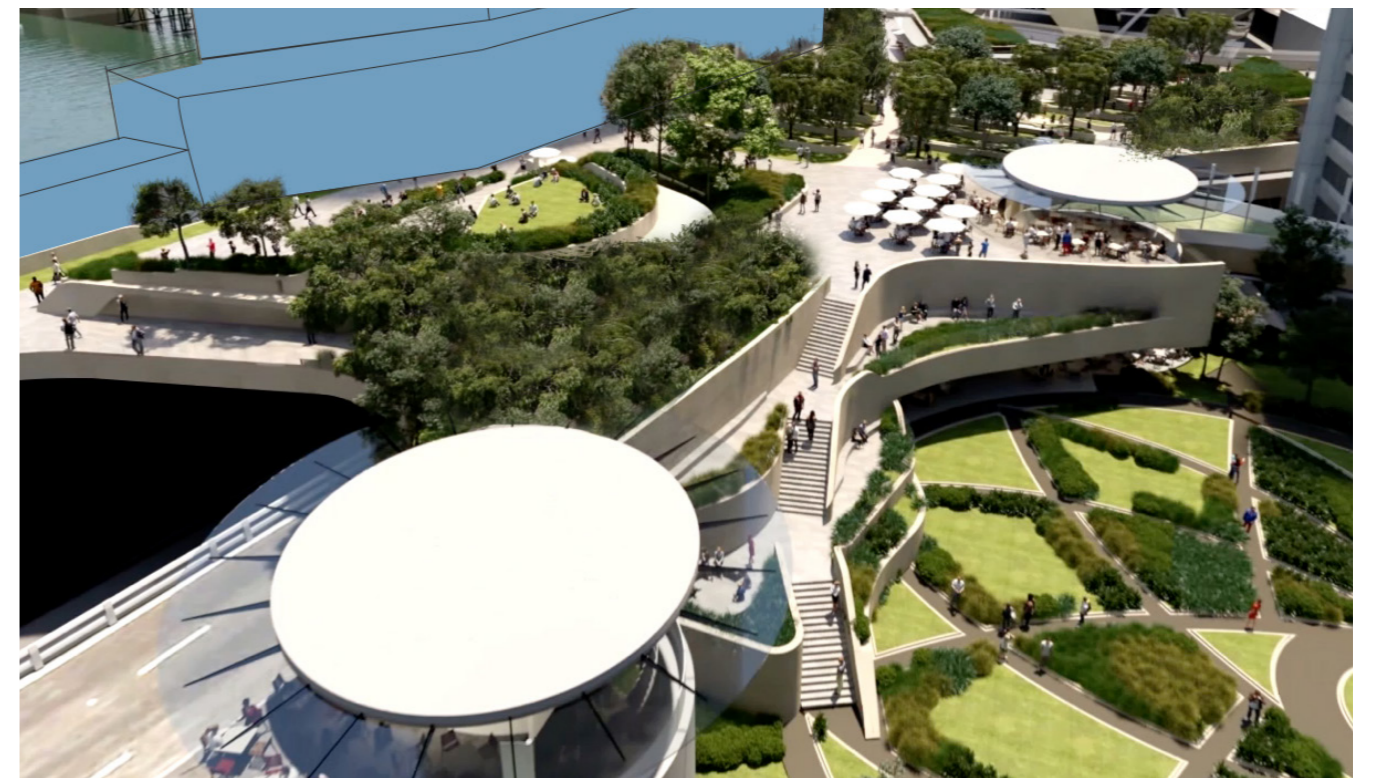


Existing condition of Crescent Garden.

Limited acoustic screening from Western Distributor.



Proposed new connection from podium deck to crescent garden.



Urban Connectors / Infrastructure

Parklands Precedents

Urban renewal of major infrastructure elements into landscaped people places is a widely aspired to concept. Locally, this idea has been thought of over several decades at Cahill Expressway, and has recently been referred in the Sydney 2030 vision at Central Railway and Western Distributor.

See following for several international precedents including concepts and built, that have reinvigorated and reconnected urban environments:

Klyde Warren Park, Dallas, US

Klyde Warren Park is an urban deck park built over the exiting Woodall Rodgers Freeway in Dallas, United States completed in 2012. The 5.2-acre park creates a central gathering space for locals and visitors through reconnecting the vibrant Uptown neighbourhood with the Dallas Arts District and downtown. The park design provides cultural and event spaces for hosting community events as well as leisure and relaxation spaces including water features, dog park, native gardens and shaded walking paths.



CityArchRiver, St Louis, US

The CityArchRiver project attempts to connect the Old courthouse with the iconic Gateway Arch on one continuous greenway over the I-44 highway. The project will provide 11 acres of new parkland, bike trails, new spaces for events and public education, an expanded museum space, performance venues, children's play areas, and a lively invigorated riverfront.

