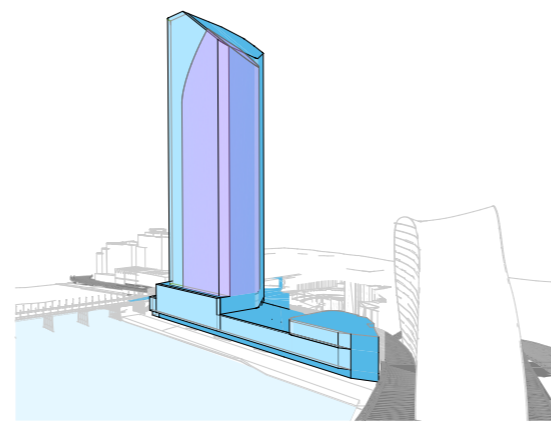


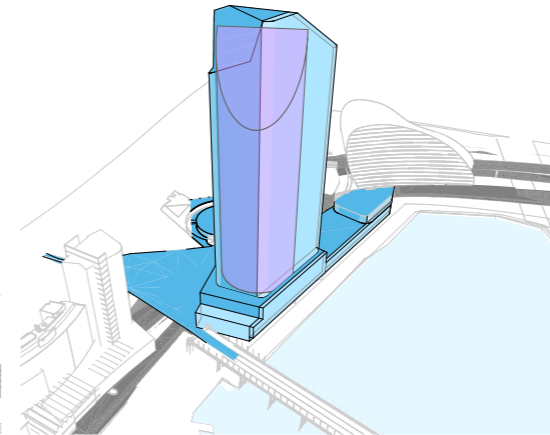
Form Studies

The following studies have been carried out to demonstrate that the proposed envelope can support a number of forms going forward, without any adverse urban design or environmental impacts.

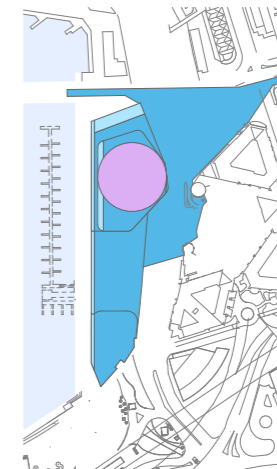
Circle Massing



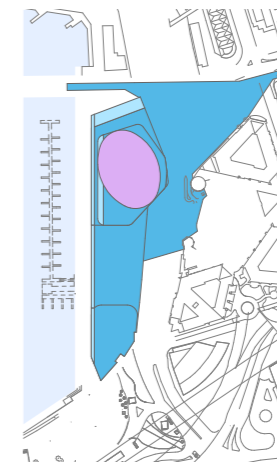
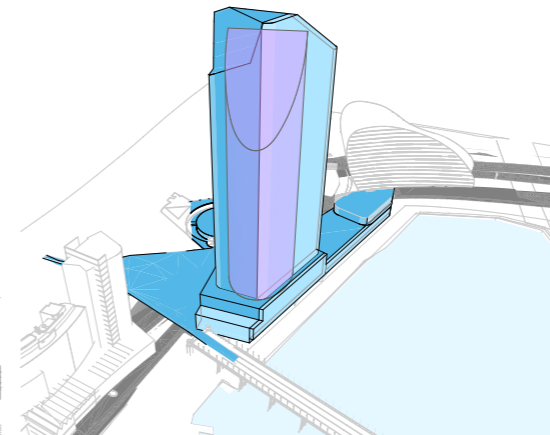
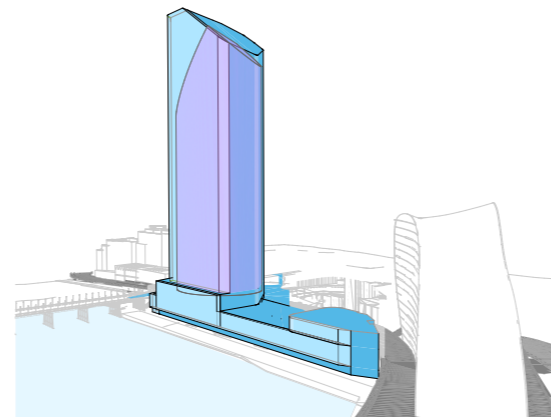
Building Envelope - 3D View 1 - Circle Massing



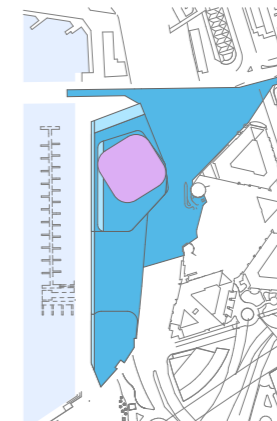
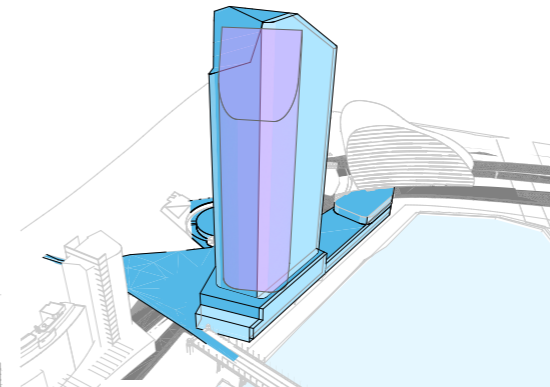
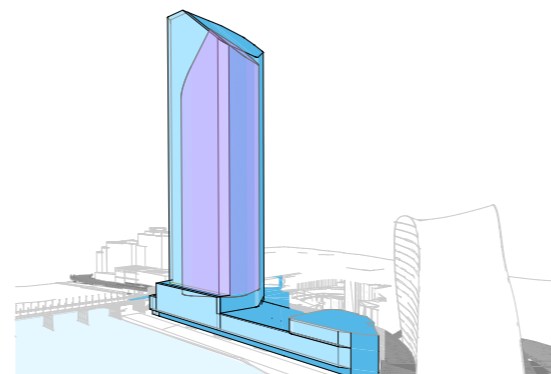
Building Envelope - 3D View 2 - Circle Massing



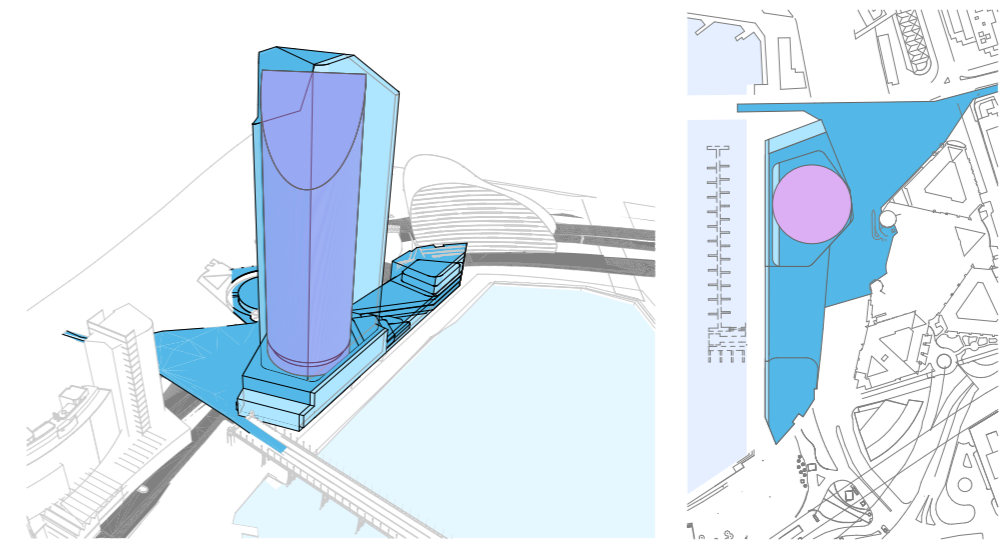
Ellipse Massing



Square Massing



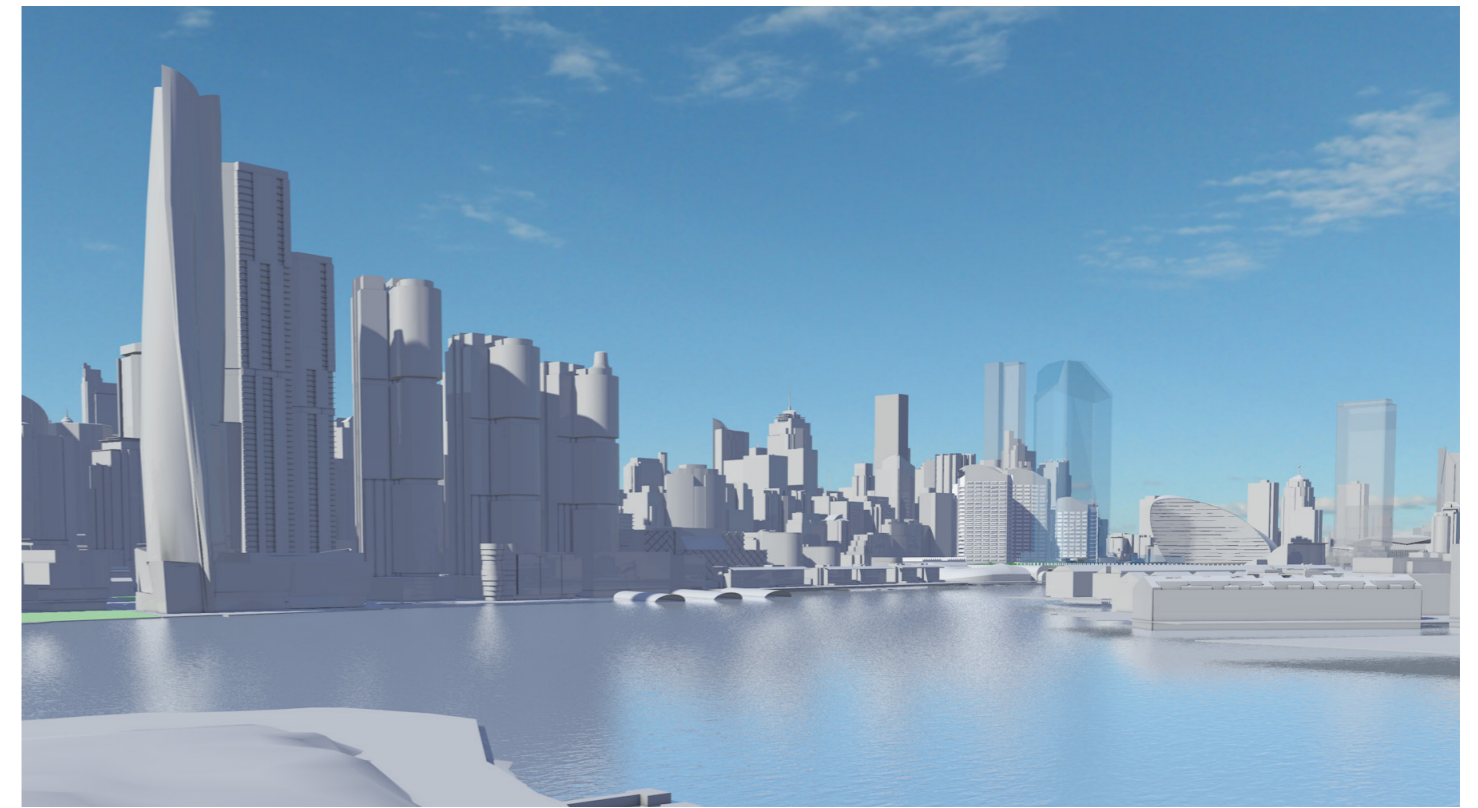
4.6 Envelope in Context



Envelope and example massing within



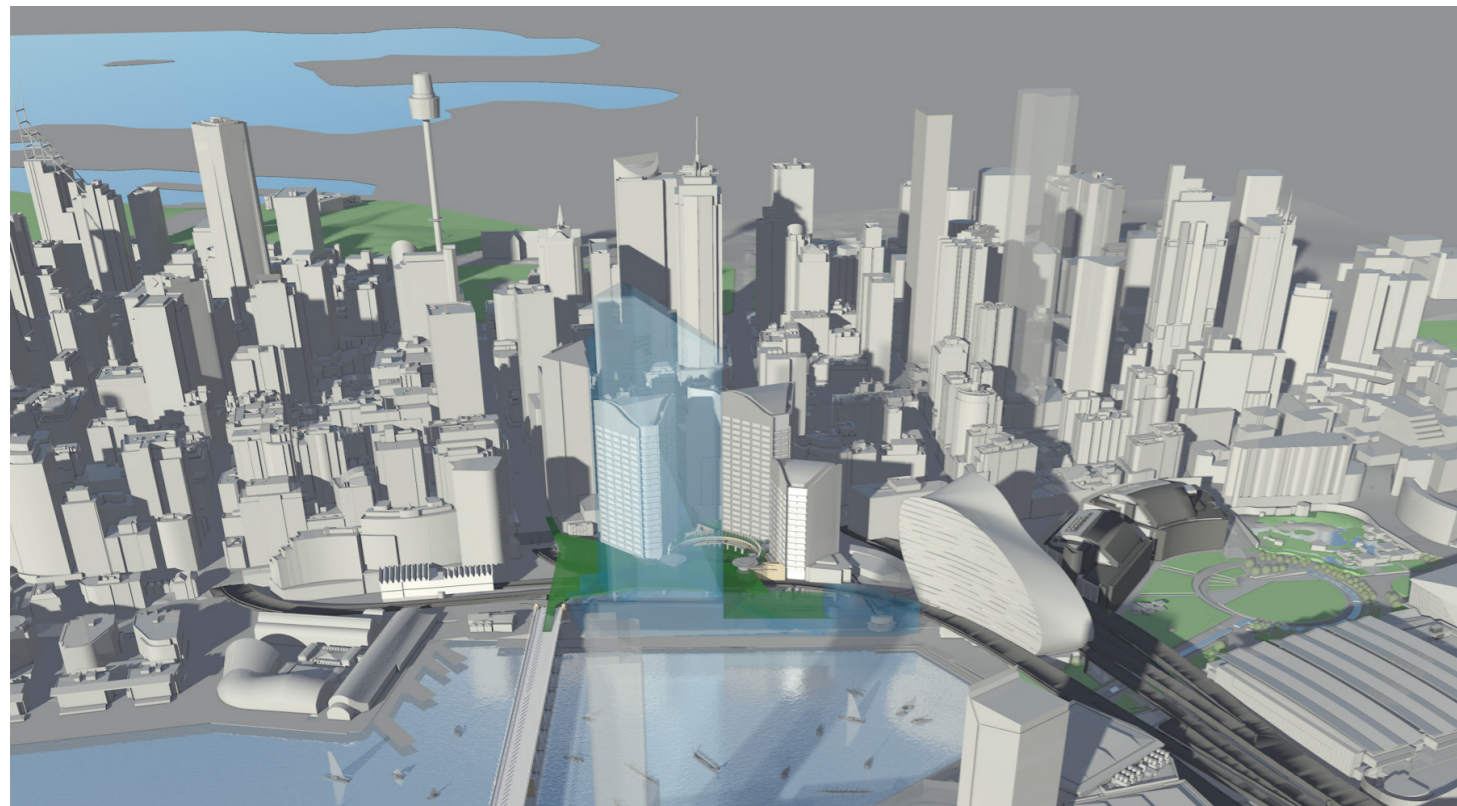
Overview of future darling harbour.



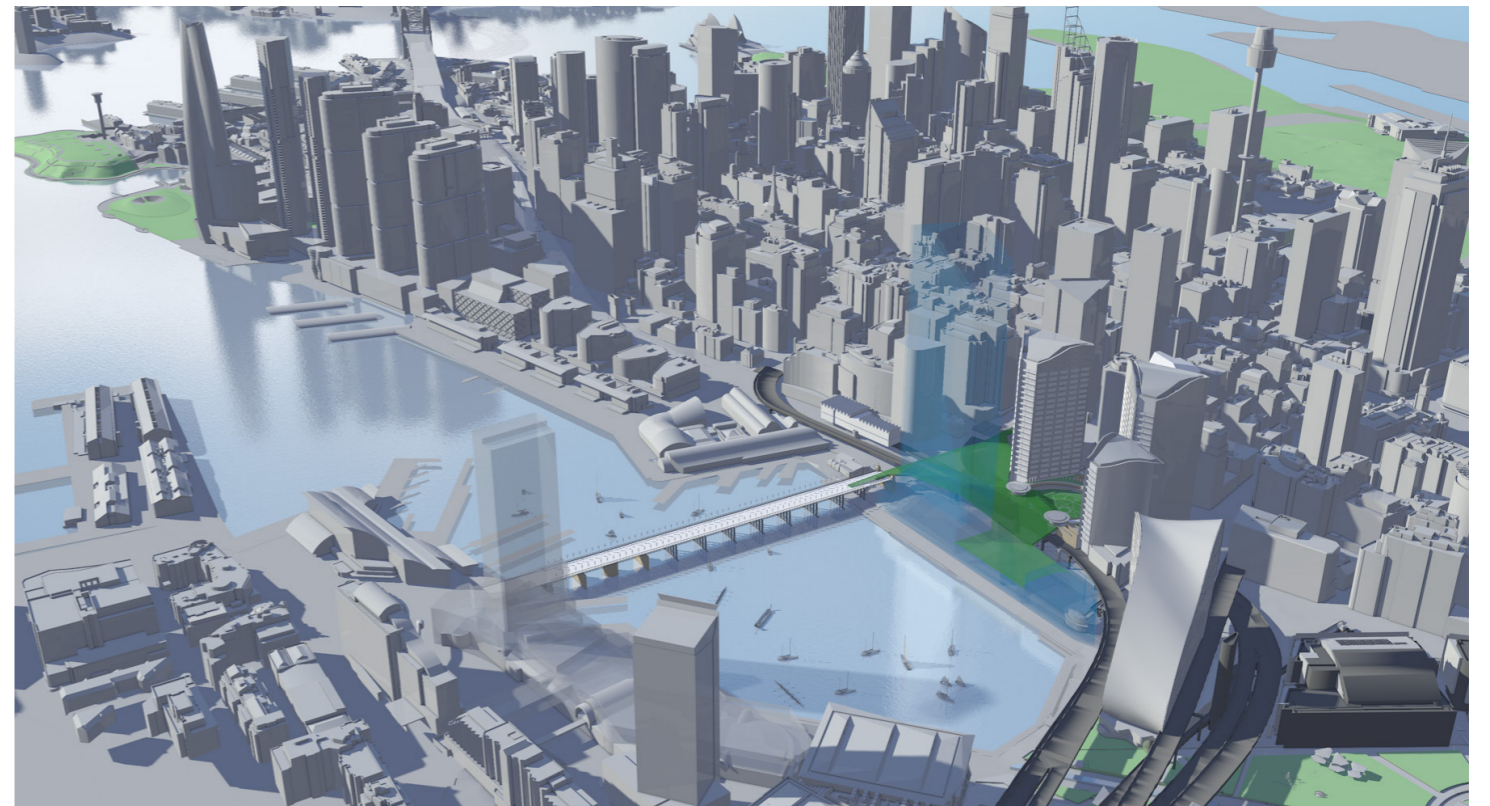
Proposed building envelope in context looking from North.



Envelope and example massing within - VIA Report



Aerial view looking from west of the proposed building envelope in context.



Aerial view looking from south of the proposed building envelope in context.

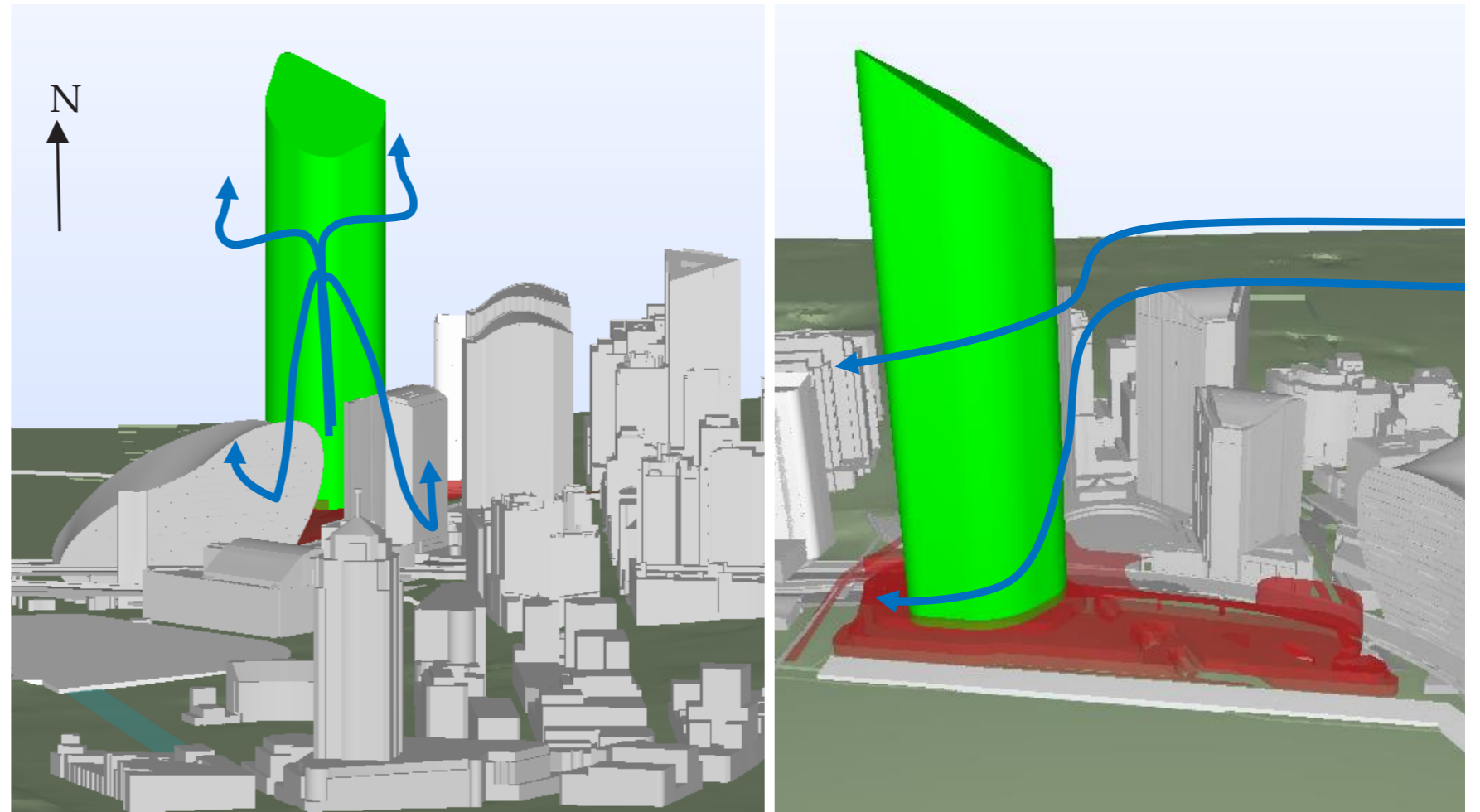
4.7 Wind Management

Curved Corners

The proposed envelope includes curved corners to increase view sharing as well as soften wind down washing. It is anticipated that any further resolution of tower massing will incorporate suitable wind mitigation methods such as curved corners. This extent of this requirement is subject to future analysis and modelling.



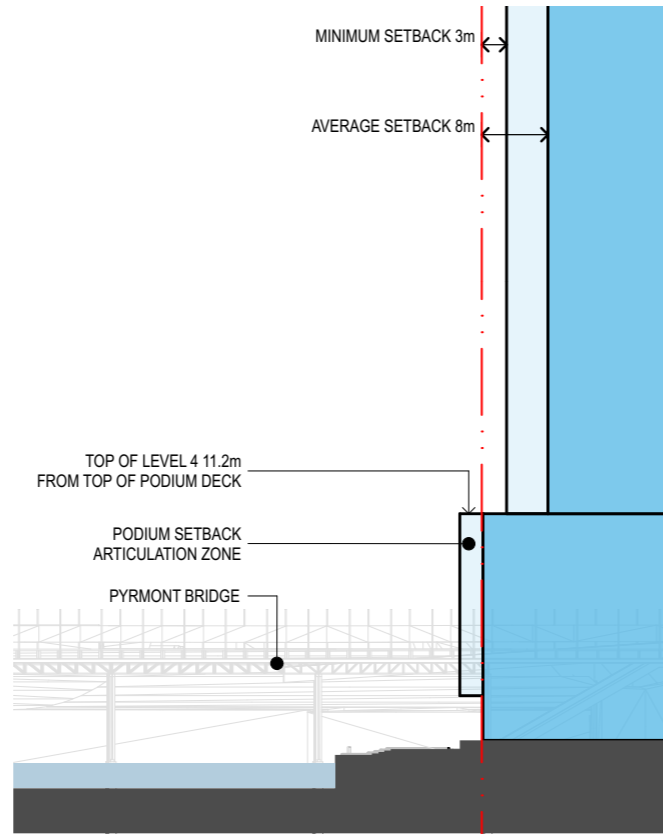
Curved corners as a method of wind mitigation



Podium

The podium element of the proposed envelope provides protection from wind downwash to the boardwalk. A minimum 6 metre and average 11 metre setback between the tower and podium is proposed to provide protection from downwash. The proposed setbacks is inline with the City of Sydney DCP requirement of 8 metre average with a minimum 6 metre setback. This meets the requirements of the draft CSPS 8 metre average, and SICEEP 6m.

The wind report suggest that overhangs and canopies are possible features that can deliver pedestrian comfort on the boardwalk and podium rooftop.



Podium deck

Winds are anticipated from the North East and South affecting the podium deck. Wind breaks where required are to be fully integrated with the landscape design through raised planters and screening structures. Significant design effort will be undertaken to optimise the quality of the public space.

