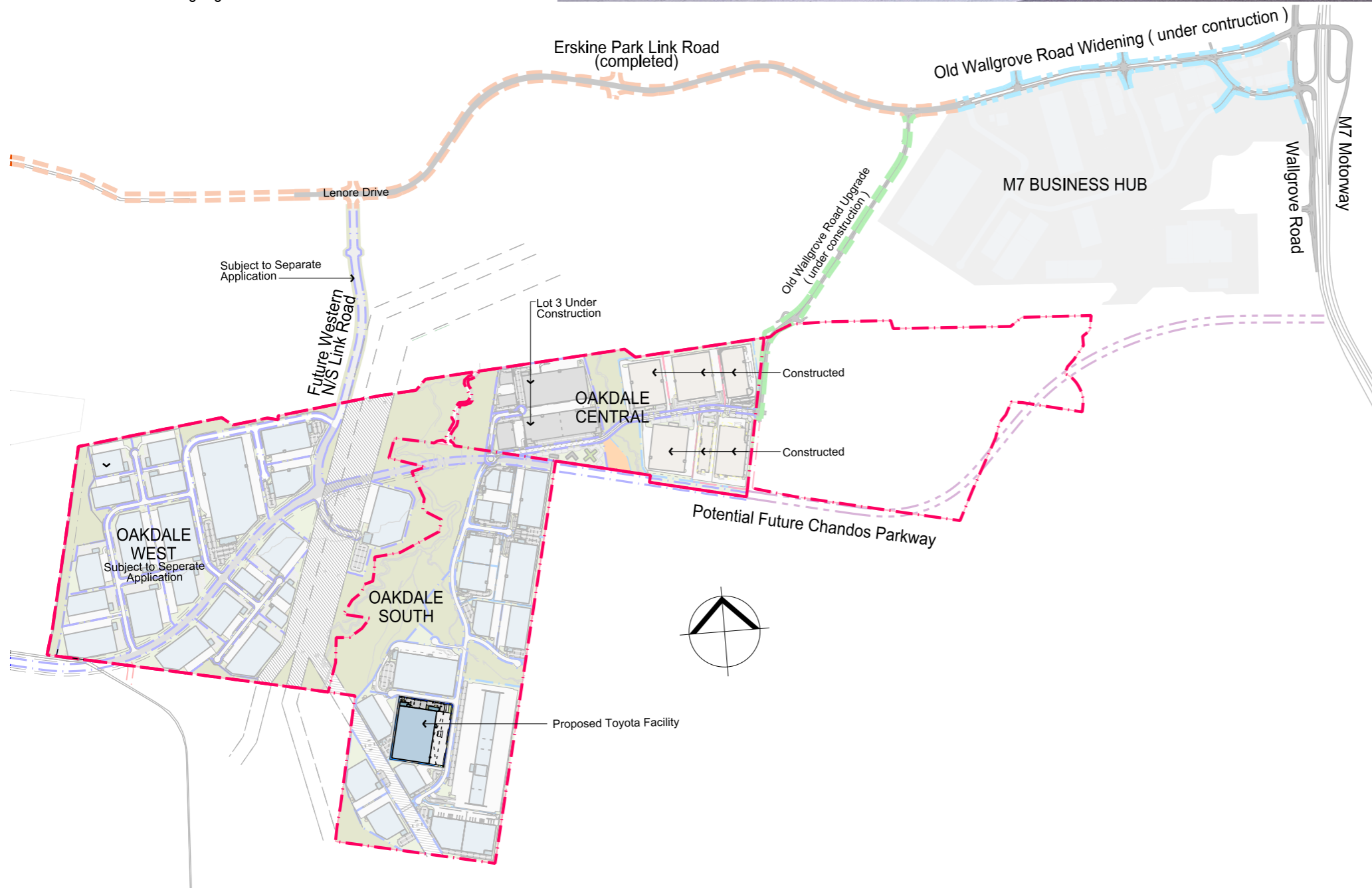


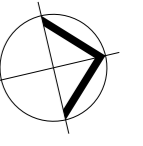
TOYOTA PARTS & ACCESSORIES FACILITY

LOT 3B
 OAKDALE SOUTH ESTATE
 Estate Road HORSLEY PARK, NSW 2175

Drawing List

OAK TOY DA 00 D	Cover Sheet & Location Plan
OAK TOY DA 01 H	Site Plan
OAK TOY DA 02 J	Warehouse Plan
OAK TOY DA 03 H	Warehouse Mezzanine Plan
OAK TOY DA 04 G	Roof Plan
OAK TOY DA 05 H	Office Plan - Ground Floor
OAK TOY DA 06 H	Office Plan - First Floor & Dock Office Plans
OAK TOY DA 07 D	Elevations
OAK TOY DA 08 C	Sections
OAK TOY DA 09 G	Office Elevations
OAK TOY DA 10 C	Sigange Details



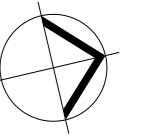


- LEGEND**
- Site Boundary
 - Lot Boundary
 - Building Setback 7.5m
 - Landscape Setback 3.75m
 - FNC-1 Chainwire Fencing
 - FNC-2 Palisade Fencing
 - RW Retaining Wall

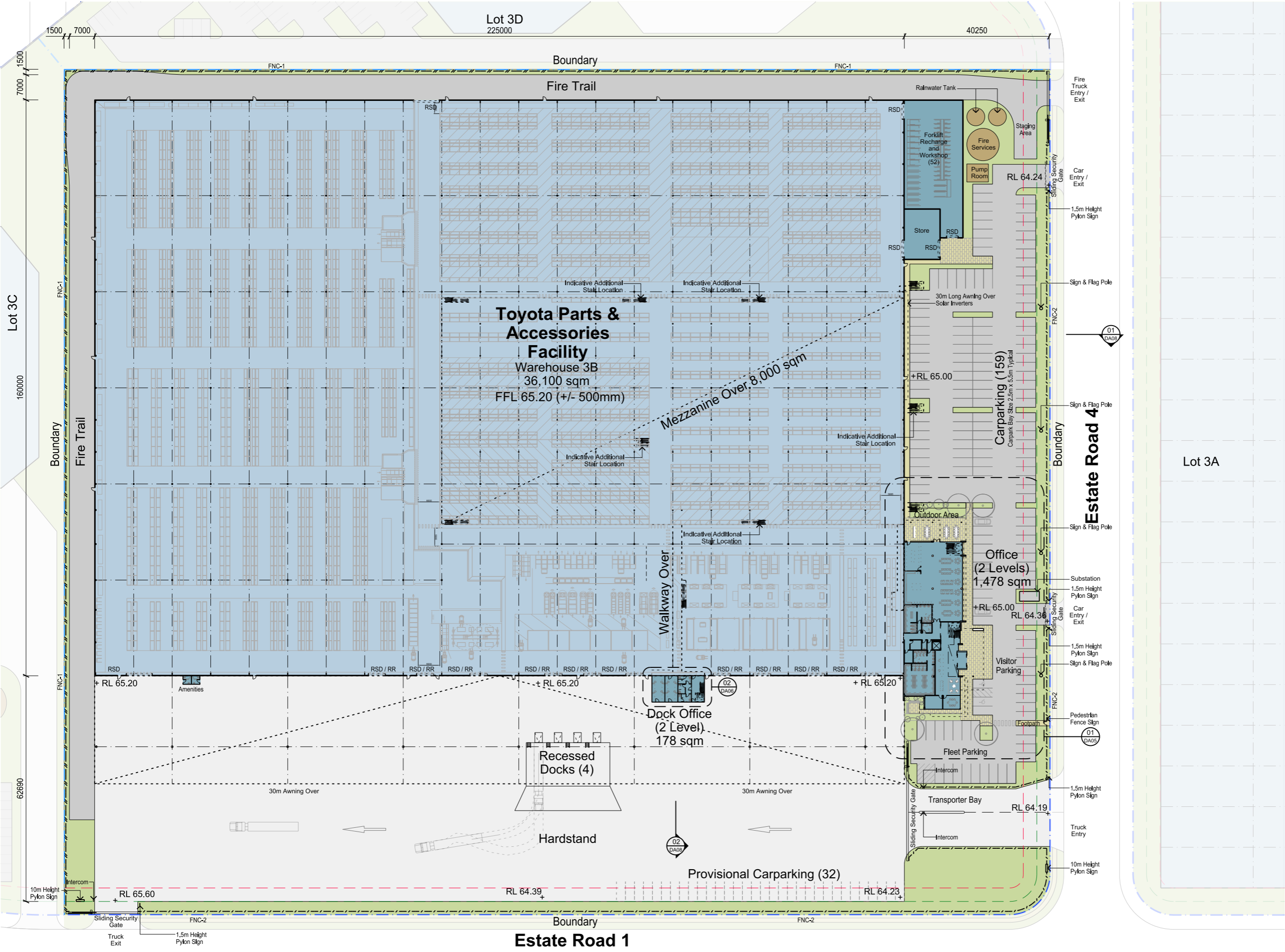


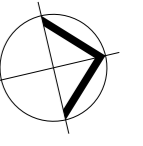
Development Area Schedule	
Site Area	64,290 sqm
Warehouse	36,100 sqm
Office (2 levels)	1,478 sqm
Dock Office (2 levels)	176 sqm
Forklift Charge	550 sqm
Store	140 sqm
Warehouse Amenity	12 sqm
Total Building Area	38,456 sqm
Mezzanine	8,000 sqm
Awning	6,750 sqm
Site Cover (exc. awning)	60%
Hardstand Area	14,820 sqm
Light Duty Area	4,120 sqm
Carparking	159
Provisional Carparking	32
Total Carparking	191



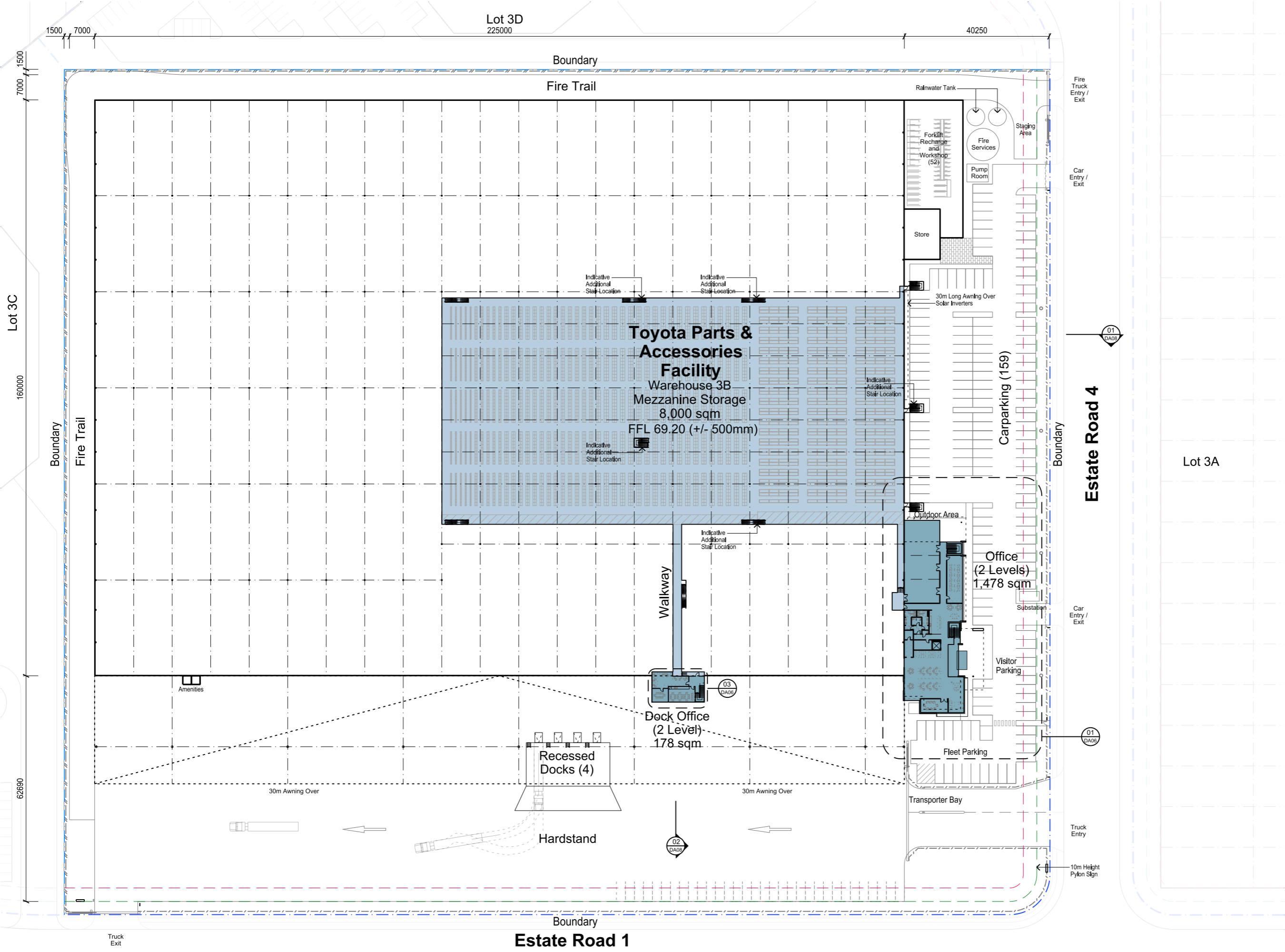


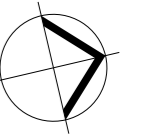
- LEGEND**
- Site Boundary
 - Lot Boundary
 - Building Setback 7.5m
 - Landscape Setback 3.75m
 - FNC-1 Chainwire Fencing
 - FNC-2 Palisade Fencing
 - RW Retaining Wall
 - RSD Roller Shutter Door
 - RR Rapid Roller Door
- Racking Ver 4.2G 27.06.16





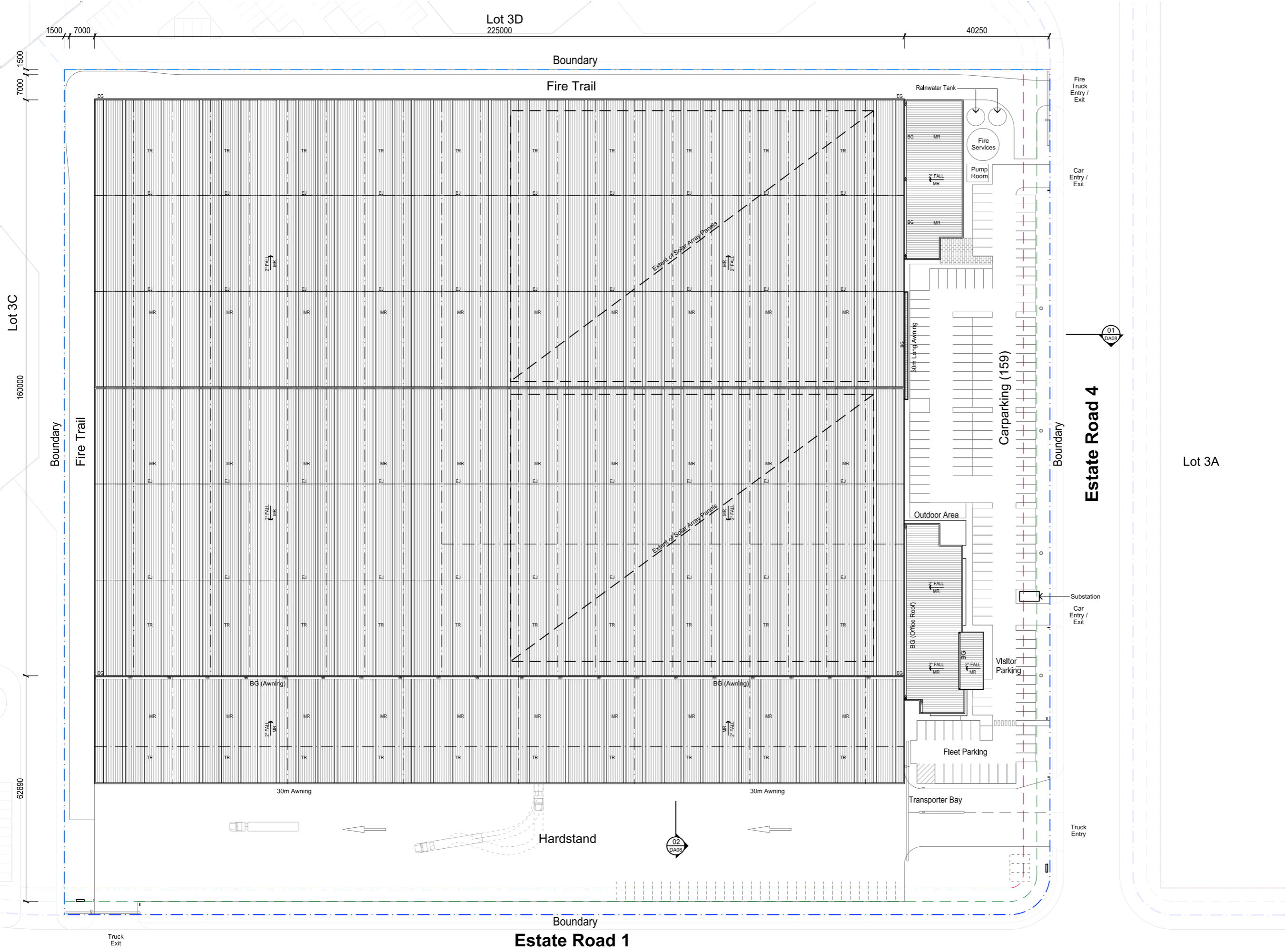
- LEGEND**
- Site Boundary
 - Lot Boundary
 - Building Setback 7.5m
 - Landscape Setback 3.75m
 - FNC-1 Chainwire Fencing
 - FNC-2 Palisade Fencing
 - RW Retaining Wall
 - RSD Roller Shutter Door
 - RR Rapid Roller Door

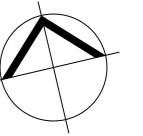




LEGEND

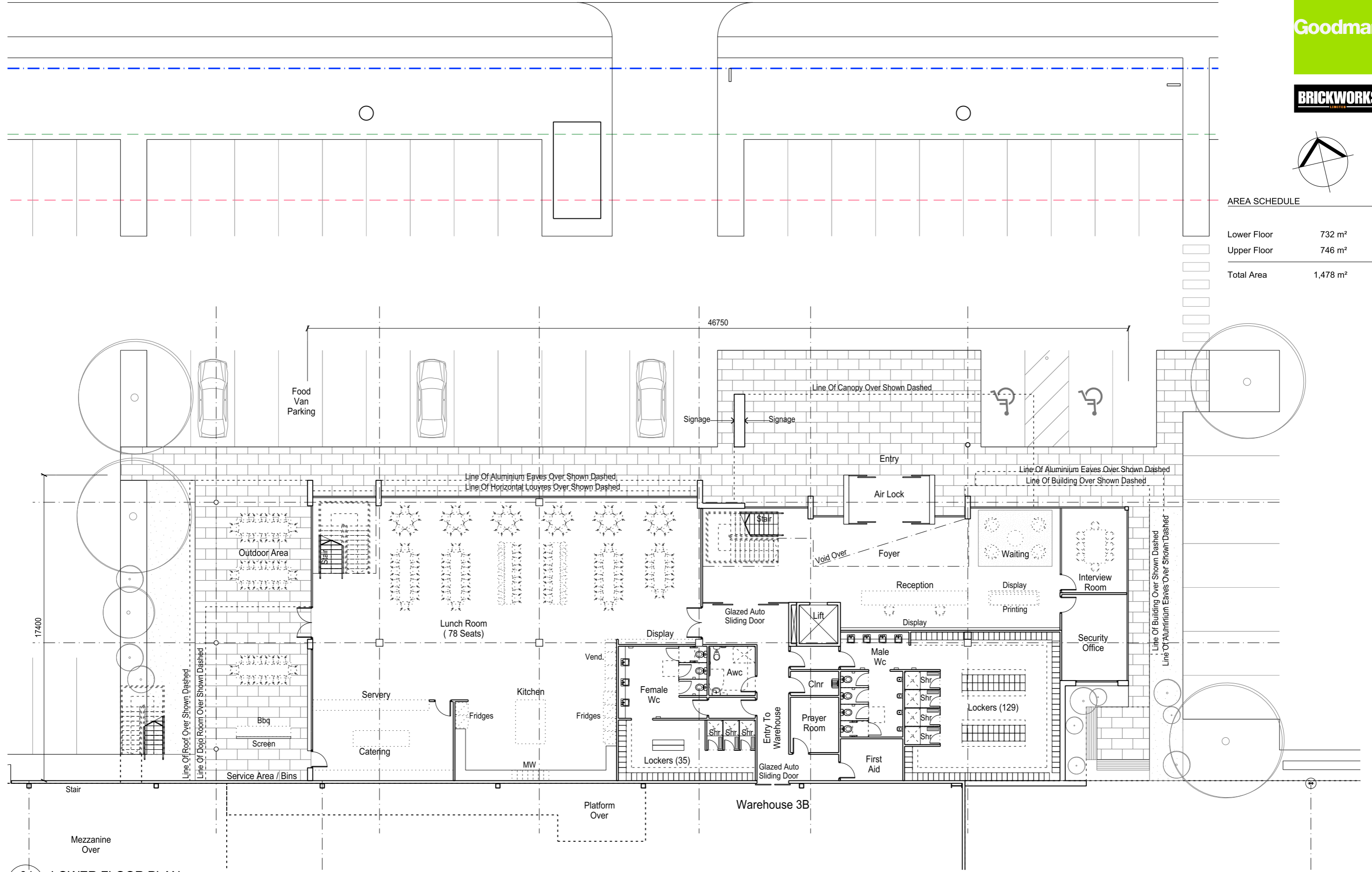
- Site Boundary
- Lot Boundary
- Building Setback 7.5m
- Landscape Setback 3.75m
- FNC-1 Chainwire Fencing
- FNC-2 Palisade Fencing
- RW Retaining Wall
- BG Box Gutter
- EG Eaves Gutter
- MR Metal Roof Sheetting
- TR Translucent Sheetting
- EJ Roof Expansion Joint





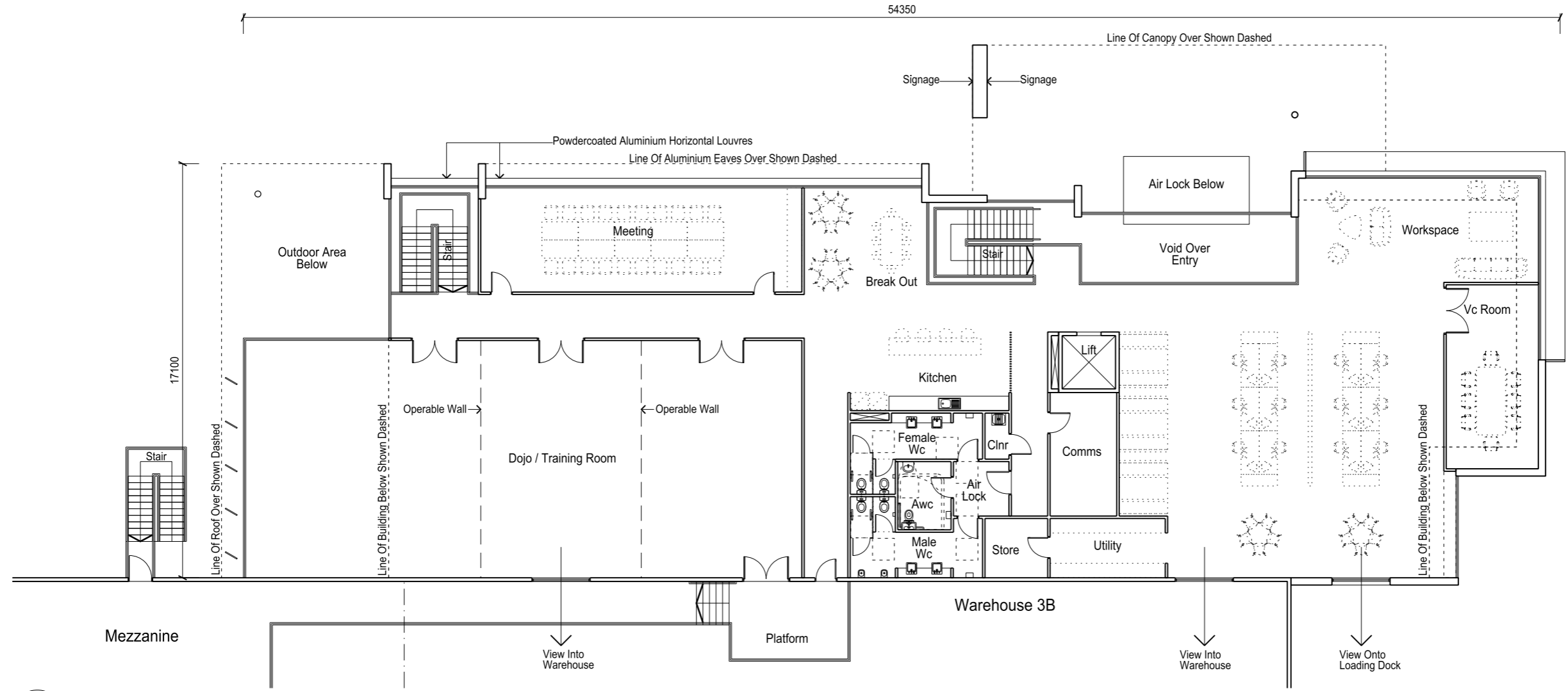
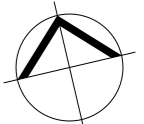
AREA SCHEDULE

Lower Floor	732 m ²
Upper Floor	746 m ²
Total Area	1,478 m²



01 LOWER FLOOR PLAN
OFFICE 3B

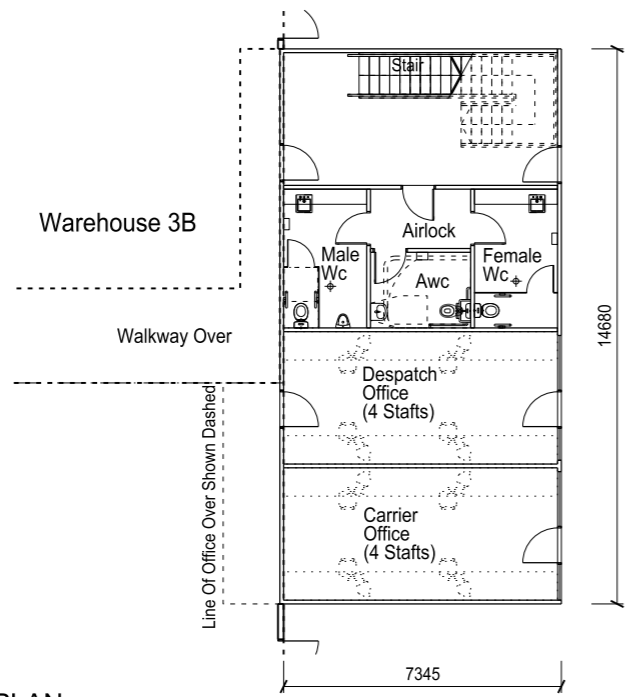




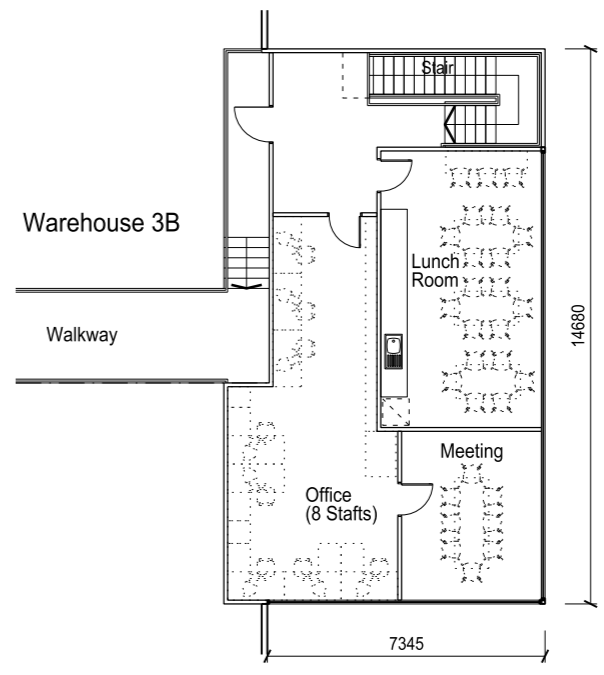
AREA SCHEDULE

Lower Floor	732 m ²
Upper Floor	746 m ²
Total Area	1,478 m²

01 FIRST FLOOR PLAN
OFFICE 3B



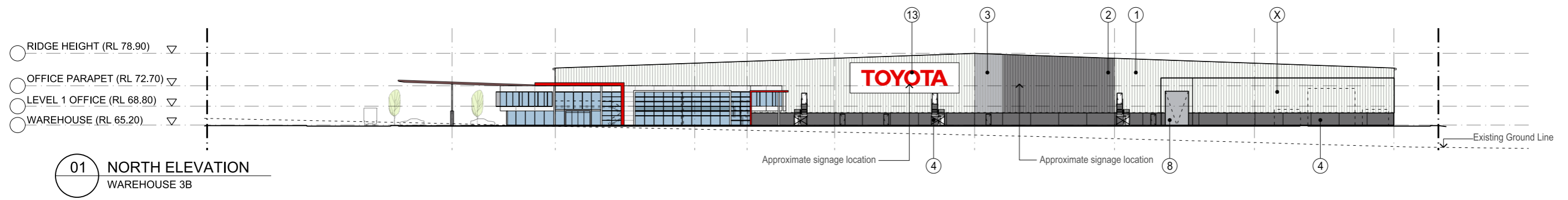
02 GROUND FLOOR PLAN
DOCK OFFICE



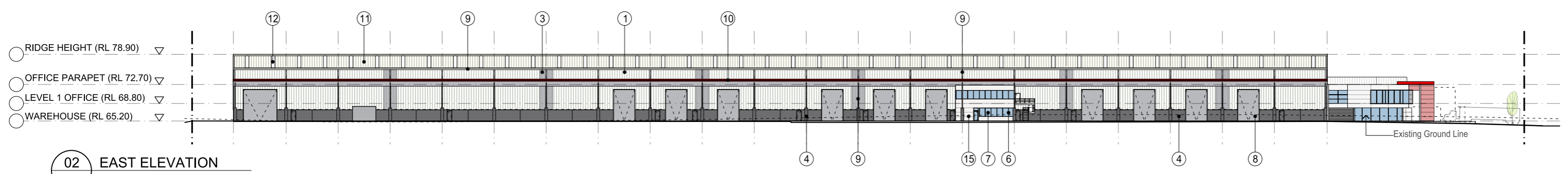
03 FIRST FLOOR PLAN
DOCK OFFICE

AREA SCHEDULE - DOCK OFFICE

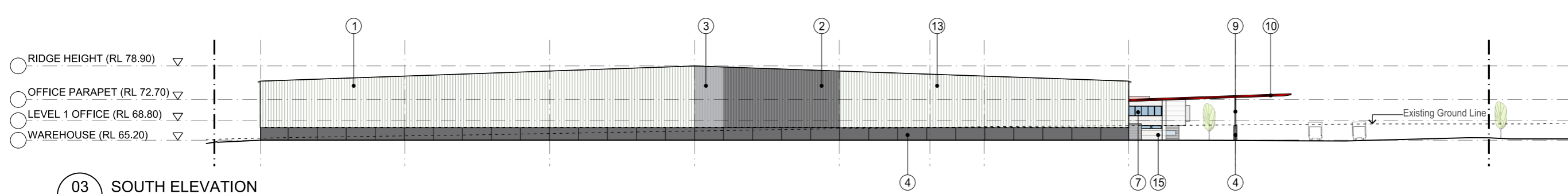
Lower Floor	118 m ²
Upper Floor	118 m ²
Total Area	236 m²



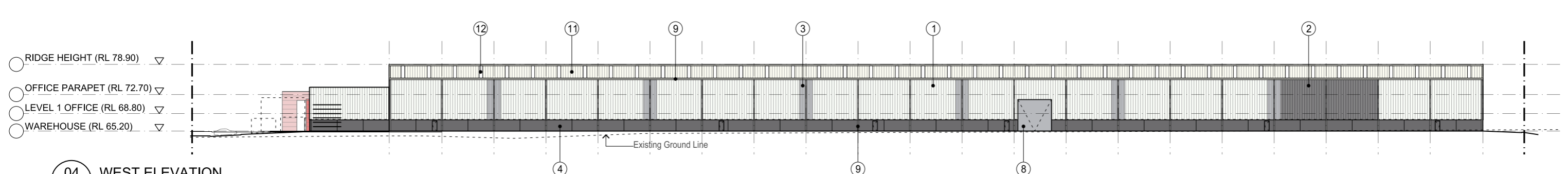
01 NORTH ELEVATION
WAREHOUSE 3B



02 EAST ELEVATION
WAREHOUSE 3B

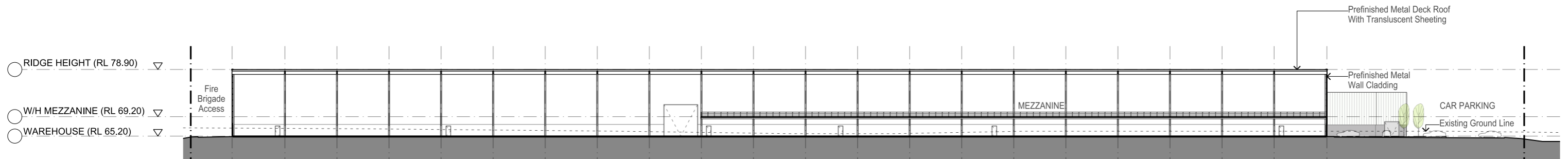


03 SOUTH ELEVATION
WAREHOUSE 3B

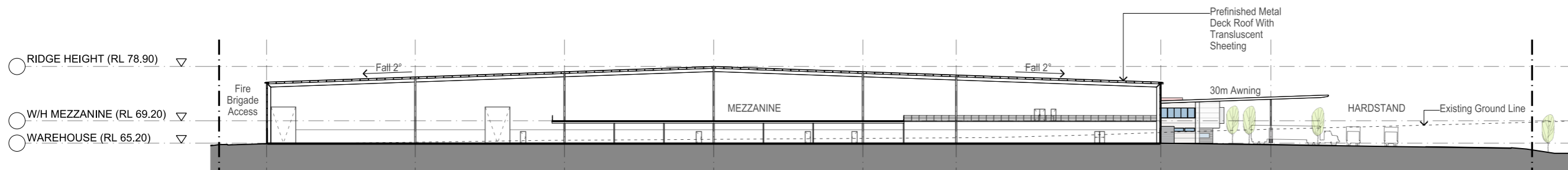


04 WEST ELEVATION
WAREHOUSE 3B

Indicative External Finishes Legend			
①	Profiled Metal Wall Cladding Colorbond - 'Surfmist'	⑤	Aluminium Cladding - 'Toyota Red'
②	Profiled Metal Wall Cladding Colorbond - 'Basalt'	⑥	Aluminum Window Frames - 'Black'
③	Profiled Metal Wall Cladding Colorbond - 'Shale Grey'	⑦	Glazing TBC
④	Precast Concrete Dado Panel Paint Finish 'Basalt'	⑧	Metal Roller Shutter Door - 'Galv. Finish'
		⑨	Warehouse Gutters, DPs & Awning Posts - 'White'
		⑩	Steel Awning Frame - 'Toyota Red'
		⑪	Profiled Metal Roofing - Colorbond Coolmax Steel 'Whitehaven'
		⑫	Translucent Skylight Panel
		⑬	Tenant Signage
		⑭	Aluminium Cladding - 'White'
		⑮	Horizontal Louvres - Prefinished Aluminium
		⑯	Sun Shading - Prefinished Aluminium
		⑰	Colour Back Glass TBC
		⑱	Steel Post & Column - Paint Finish
		⑳	Aluminium Cladding - 'Grey'



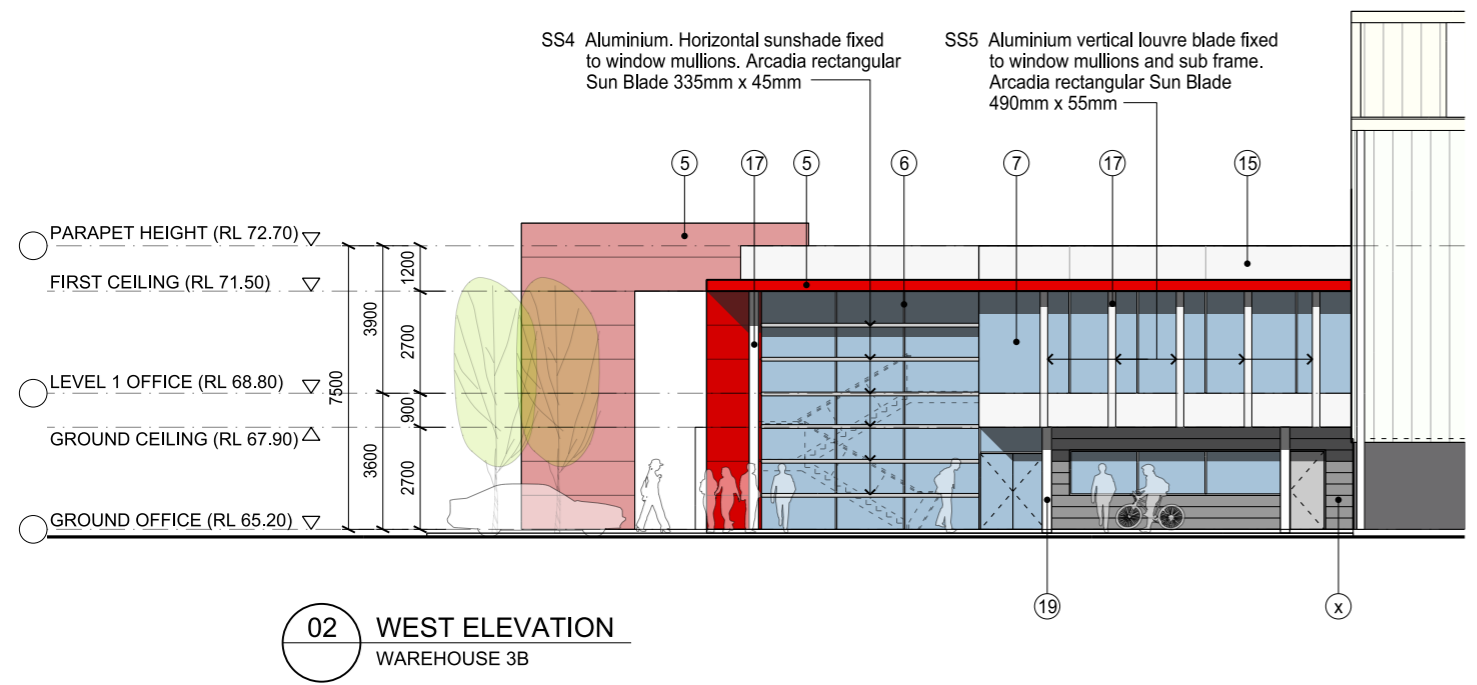
01 SECTION 01
WAREHOUSE 3B



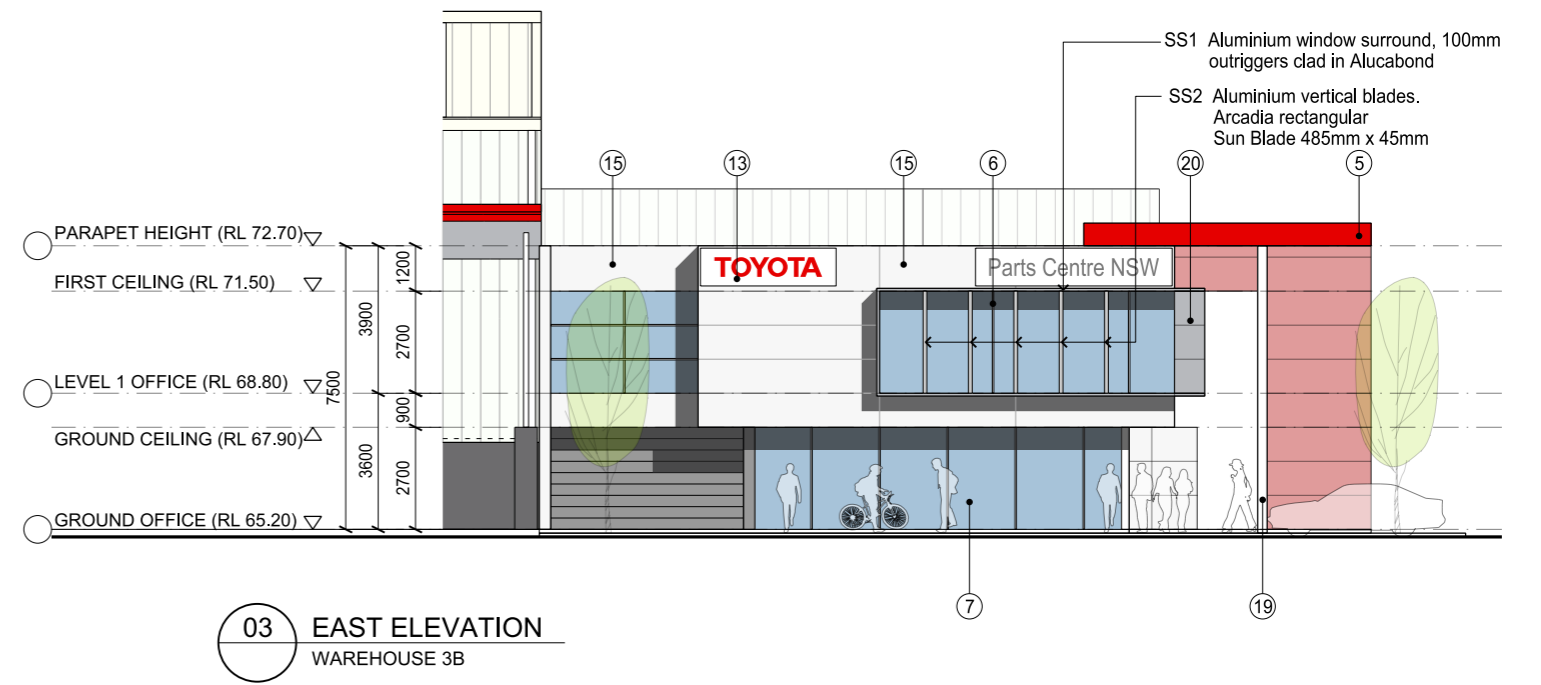
02 SECTION 02
WAREHOUSE 3B



01 NORTH ELEVATION
WAREHOUSE 3B

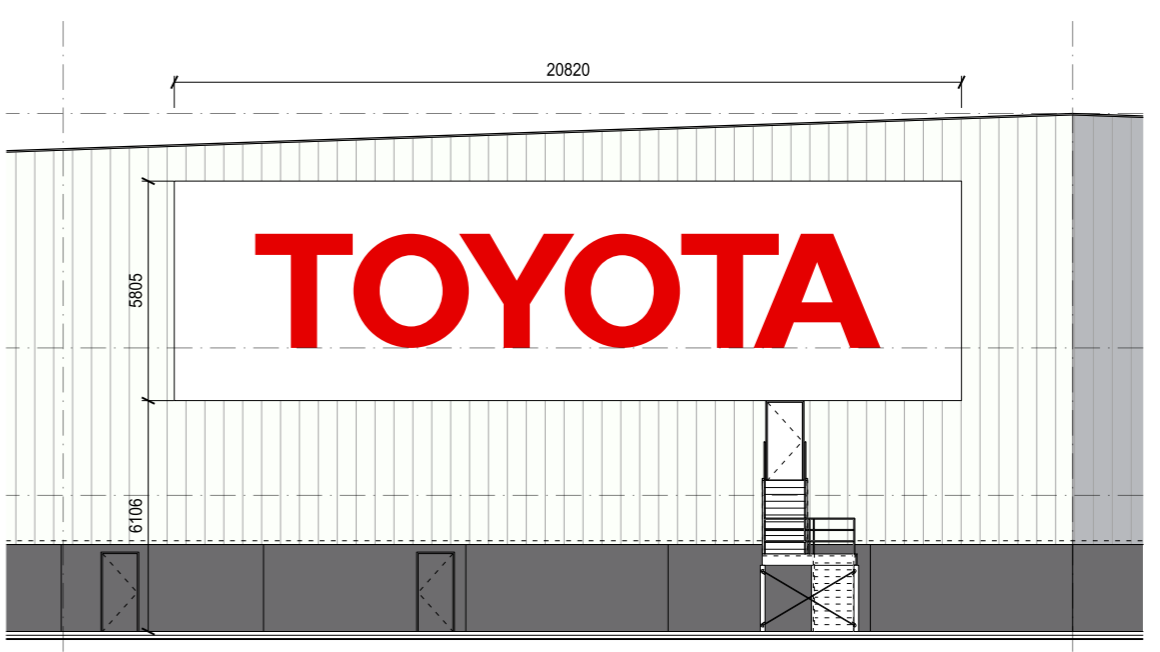
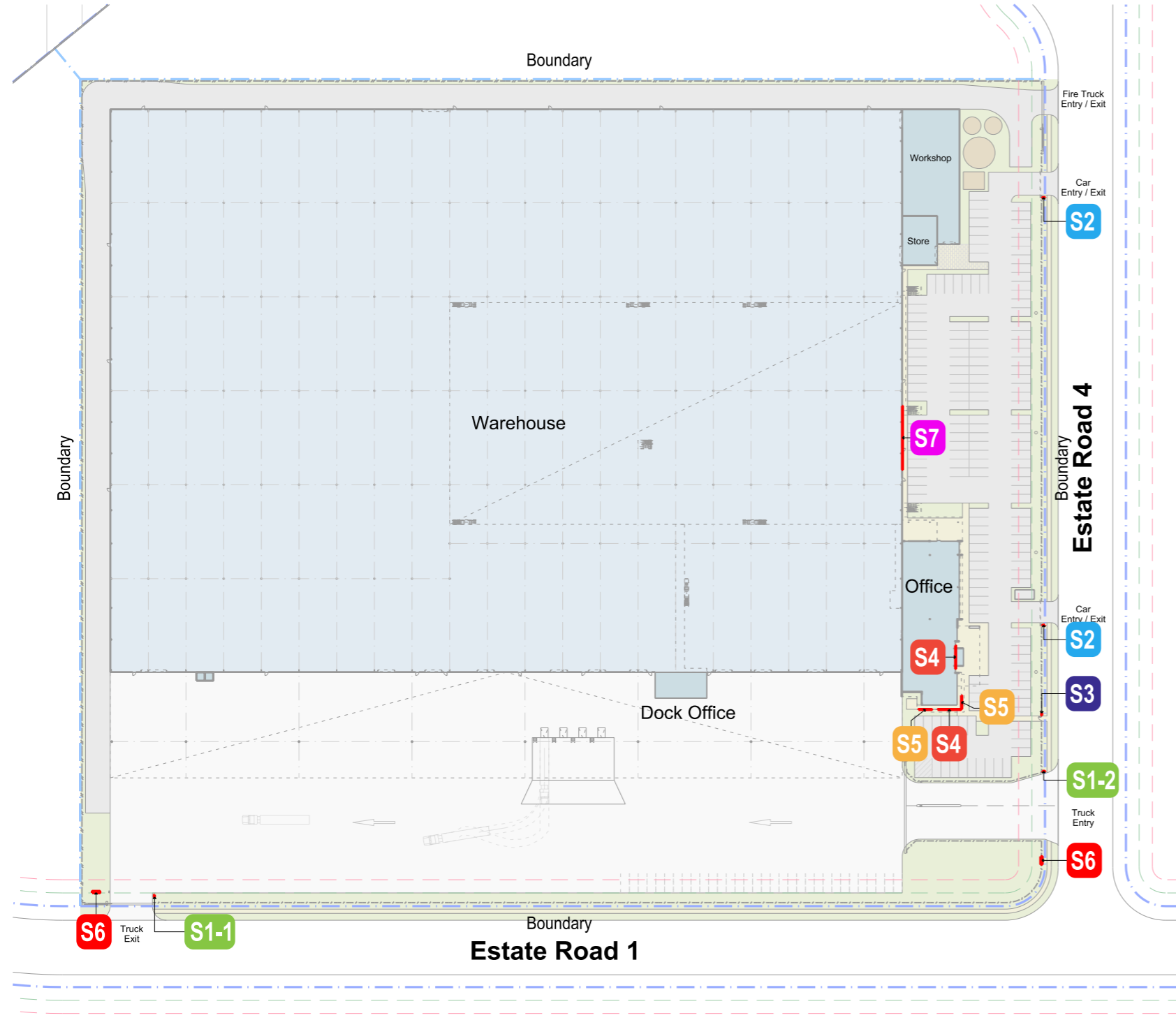
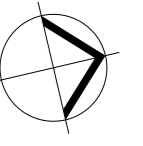


02 WEST ELEVATION
WAREHOUSE 3B



03 EAST ELEVATION
WAREHOUSE 3B

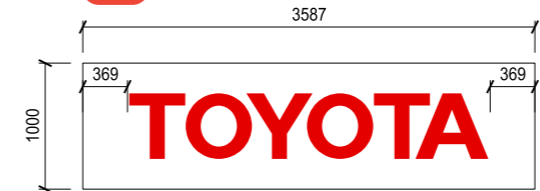
Indicative External Finishes Legend									
①	Profiled Metal Wall Cladding Colorbond - 'Surfmist'	⑤	Aluminium Cladding - 'Toyota Red'	⑨	Warehouse Gutters, DPs & Awning Posts - 'White'	⑬	Tenant Signage	⑰	Sun Shading - Prefinished Aluminium
②	Profiled Metal Wall Cladding Colorbond - 'Basalt'	⑥	Aluminum Window Frames - 'Black'	⑩	Steel Awning Frame - 'Toyota Red'	⑭		⑱	Colour Back Glass TBC
③	Profiled Metal Wall Cladding Colorbond - 'Shale Grey'	⑦	Glazing TBC	⑪	Profiled Metal Roofing - Colorbond Coolmax Steel 'Whitehaven'	⑮	Aluminium Cladding - 'White'	⑲	Steel Post & Column - Paint Finish
④	Precast Concrete Dado Panel Paint Finish 'Basalt'	⑧	Metal Roller Shutter Door - 'Galv. Finish'	⑫	Translucent Skylight Panel	⑯	Horizontal Louvres - Prefinished Aluminium	⑳	Aluminium Cladding - 'Grey'



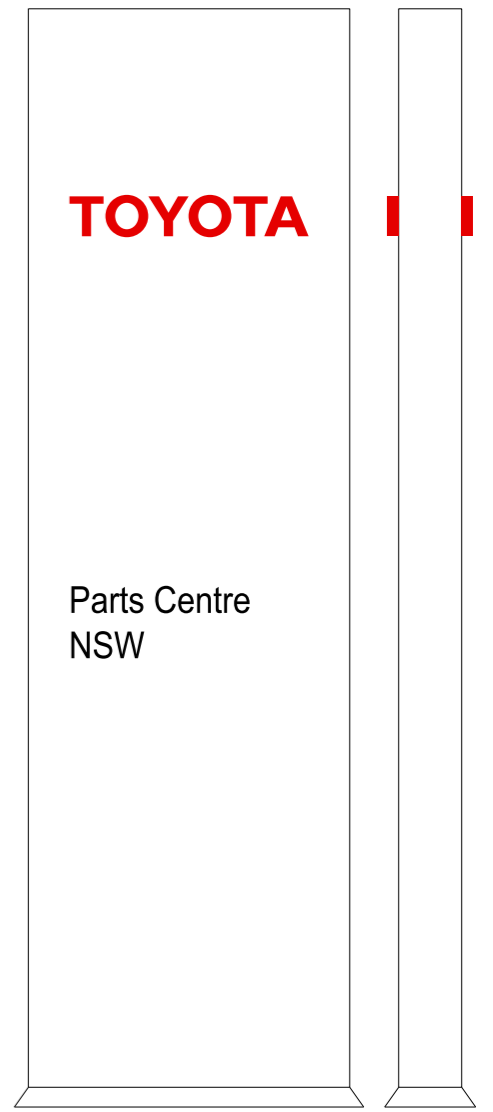
S7 Illuminated box lighting lettering



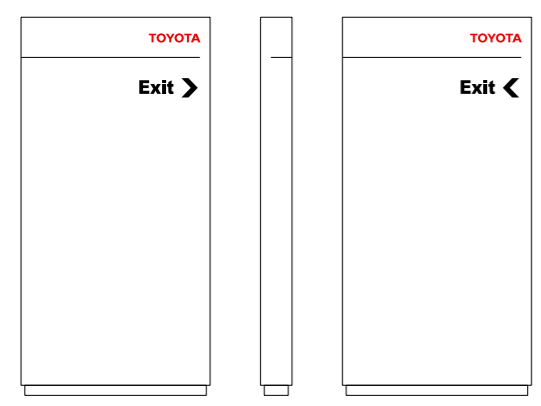
S4



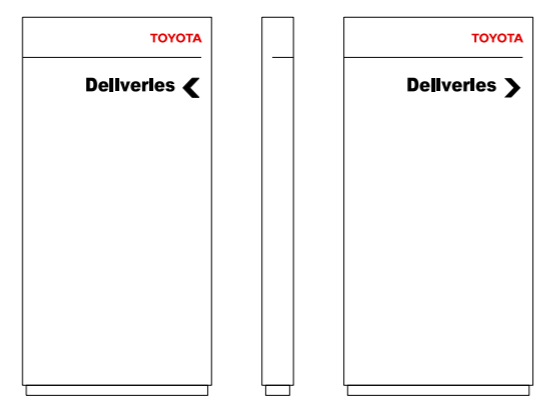
S5



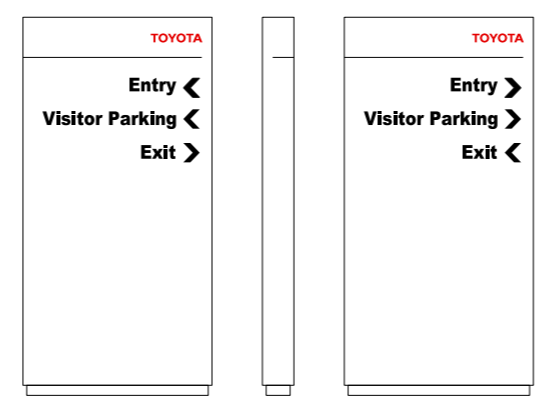
S6 10 metre illuminated pylon
10m x 2.55m x .5m



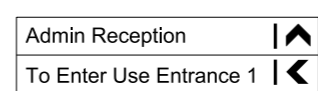
S1-1 1.5 metre pylon
1.5m x .75m x .125m



S1-2 1.5 metre pylon
1.5m x .75m x .125m



S2 1.5 metre pylon
1.5m x .75m x .125m



S3 Pedestrian fence signage