

# TEMPUS STREET, ROUSE HILL

## STATE SIGNIFICANT DEVELOPMENT APPLICATION

LOCATION PLAN



DRAWING SCHEDULE

SHEET	NAME	DATE	REVISION	SERIES
L000	COVER SHEET	10.06.25	C	000
L001	LEGEND	16.05.25	B	000
L002	PLANTING SCHEDULE	16.05.25	B	000
L003	SITE PLAN	10.06.25	C	000
L200	SURFACE FINISHES PLAN - GROUND FLOOR	04.04.25	A	200
L210	SURFACE FINISHES PLAN - LEVEL 1 & 3	10.06.25	C	200
L220	SURFACE FINISHES PLAN - LEVEL 10 TERRACE	16.05.25	B	200
L230	SURFACE FINISHES PLAN - LEVEL 17 TERRACE	16.05.25	B	200
L240	SURFACE FINISHES PLAN - LEVEL 22 TERRACE	16.05.25	B	200
L500	PLANTING PLAN - GROUND FLOOR	04.04.25	A	500
L510	PLANTING PLAN - LEVEL 1 & 3	10.06.25	C	500
L520	PLANTING PLAN - LEVEL 10 TERRACE	16.05.25	B	500
L530	PLANTING PLAN - LEVEL 17 TERRACE	16.05.25	B	500
L540	PLANTING PLAN - LEVEL 22 TERRACE	16.05.25	B	500

NOTES

- THIS DRAWING IS TO BE READ IN CONJUNCTION WITH ALL LANDSCAPE ARCHITECTURE SCHEDULES, TECHNICAL SPECIFICATIONS, AND OTHER CONSULTANT DRAWINGS. PLEASE CHECK AND VERIFY ALL DIMENSIONS AND SITE CONDITIONS PRIOR TO THE COMMENCEMENT OF ANY WORK. DO NOT SCALE DRAWINGS. REFER TO FIGURED DIMENSIONS ONLY. PLEASE INFORM OCULUS OF ANY DISCREPANCIES FOR CLARIFICATION BEFORE PROCEEDING. UNLESS OTHERWISE NOTED THIS DRAWING IS NOT FOR CONSTRUCTION. SERVICES SHOWN ON THIS DRAWING ARE APPROXIMATE ONLY. THE EXACT LOCATION IS TO BE CONFIRMED ON-SITE BY CONTRACTOR PRIOR TO COMMENCEMENT. DIAL BEFORE YOU DIG.

# LEGEND

## GENERAL

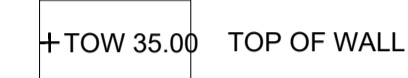


EXTENT OF WORKS

## GRADING



RELATIVE LEVEL



TOP OF WALL



TOP OF SEAT



GRADING FALL

## PV - PAVING

- (PV01) PAVEMENT TYPE 01 PERMEABLE PAVER
- (PV02) PAVEMENT TYPE 02 BLUESTONE PAVER
- (PV03) PAVEMENT TYPE 03 INSITU CONCRETE PAVING TO MATCH EXISTING FOOTPATH
- (PV04) PAVEMENT TYPE 04 ELEVATED TIMBER DECKING IN DEEP SOIL ZONE
- (PV05) PAVEMENT TYPE 05 TIMBER DECK ON SLAB ON PEDESTALS
- (PV06) PAVEMENT TYPE 06 COMPACTED DECO GRAVEL
- (PV07) PAVEMENT TYPE 07 ARTIFICIAL TURF ON SLAB
- (PV08) PAVEMENT TYPE 08 STONE UNIT PAVING ON SLAB
- (PV09) PAVEMENT TYPE 09 PORPHYRY PAVING ON SLAB
- (PV10) PAVEMENT TYPE 10 FEATURE PAVING ON SLAB

## WL - WALLS & EDGES

- (WL01) WALL TYPE 01 STEEL PLANTER
- (WL02) WALL TYPE 02 CONCRETE RETAINING WALL
- (WL03) WALL TYPE 03 TIMBER SLEEPER WALL
- (ED01) EDGE TYPE 01 STEEL EDGE

## PL - PLANTING

- (PL01) PLANTING TYPE 01 MASS PLANTING IN DEEP SOIL ZONE
- (PL02) PLANTING TYPE 02 MASS PLANTING ON STRUCTURE
- (PL03) PLANTING TYPE 03 EXTENSIVE GREEN ROOF PLANTING
- (PL04) PLANTING TYPE 04 FACADE PLANTING
- (TU01) LAWN

## TP - TREE PLANTING

- (TP01) TREE PLANTING TYPE 01 PROPOSED TREE
- (TP02) EXISTING TREE TO BE RETAINED REFER TO ARBORIST REPORT FOR DETAILS
- (TP03) EXISTING TREE TO BE REMOVED REFER TO ARBORIST REPORT FOR DETAILS

## FN - FURNITURE

- (FN01) FURNITURE TYPE 01 SANDSTONE BLOCK SEAT
- (FN02) FURNITURE TYPE 02 OUTDOOR DINING SET
- (FN03) FURNITURE TYPE 03 POT PLANTS
- (FN04) FURNITURE TYPE 04 BBQ
- (FN05) FURNITURE TYPE 05 PRECAST CONCRETE BENCH
- (FN06) FURNITURE TYPE 06 OUTDOOR DINING TABLE AND SEAT
- (FN07) FURNITURE TYPE 07 HARDWOOD TIMBER BATTENS SEATING
- (FN08) FURNITURE TYPE 08 FEATURE SEAT
- (FN09) FURNITURE TYPE 09 WATER FEATURE
- (FN10) FURNITURE TYPE 10 SANDSTONE BOULDERS
- (FN11) FURNITURE TYPE 11 CONCRETE STOOL WITH TIMBER TOP
- (FN12) FURNITURE TYPE 12 SUN LOUNGES
- (FN13) FURNITURE TYPE 13 CUSTOM SHADE STRUCTURE
- (FN14) FURNITURE TYPE 14 CUSTOM TIMBER PLATFORM
- (FN15) FURNITURE TYPE 15 BAR TABLE AND STOOL
- (FN16) FURNITURE TYPE 16 FEATURE BALUSTRADE

This drawing is to be read in conjunction with all landscape architecture schedules, technical specifications, and other consultant drawings. Please check and verify all dimensions and site conditions prior to the commencement of any work. Do not scale drawings – refer to figured dimensions only. Please inform OCULUS of any discrepancies for clarification before proceeding. Unless otherwise noted this drawing is not for construction. Services shown on this drawing are approximate only, the exact location is to be confirmed on-site by contractor prior to commencement – before you dig (byda.com.au). © 2024

KEY PLAN

SCALE

PROJECT S24-022  
TEMPUS STREET, ROUSE HILL  
2-30 TEMPUS STREET, ROUSE HILL,  
NSW 2155, AUSTRALIA  
STATUS  
DEVELOPMENT APPLICATION  
CLIENT  
FREECITY GROUP  
ARCHITECT  
ARCHITECTUS

ISSUE	DATE	AMENDMENT	BY	APPROVED
A	04.04.25	SSDA	GF	KS
B	16.05.25	SSDA	GH	KS

DRAWING TITLE  
LEGEND

DRAWING NUMBER  
L001

REVISION  
B

OCULUS

FREECITY

architectus

oculus.info  
ABN 34 074 882 447

### Ground Floor - Trees

Image	Botanic Name	Common Name	H x W (m)	Pot Size
1	<i>Acacia implexa</i> *	Hickory Wattle	8 x 5	200L
2	<i>Brachychiton discolor</i> **	Lacebark Tree	15 x 8	200L
3	<i>Calodendrum capense</i>	Cape Chestnut	12 x 10	200L
4	<i>Eucalyptus amplifolia</i> *	Cabbage Gum	25 x 8	400L
5	<i>Eucalyptus crebra</i> *	Narrow-leaved Ironbark	20 x 10	400L
6	<i>Eucalyptus maculata</i> *	Spotted Gum	25 x 10	400L
7	<i>Eucalyptus scoparia</i> **	Wallangarra White Gum	15 x 8	400L
8	<i>Eucalyptus tereticornis</i> *	Forest Red Gum	30 x 15	400L
9	<i>Gleditsia tricanthos</i> 'Sunburst'	Sunburst Honey Locust	12 x 7	200L
10	<i>Melaleuca decora</i> *	White Feather Honeymyrtle	8 x 6	200L
11	<i>Melaleuca linariifolia</i> **	Snow-in-Summer	15 x 8	200L

\* Cumberland Plain Woodland species

\*\* Australian Native Plant Species

### Ground Floor - Shrubs (GFMIX 01)

Image	Botanic Name	Common Name	H x W (m)	Pot Size	Spacing
	<i>Bursaria spinosa</i> *	Sweet Bursaria	4 x 3	300mm	3/m <sup>2</sup>
1	<i>Bossiaea heterophylla</i> **	Variable Bossiaea	1 x 1	200mm	3/m <sup>2</sup>
2	<i>Correa alba</i> **	White Correa	1 x 1	200mm	3/m <sup>2</sup>
	<i>Daviesia ulcifolia</i> *	Gorse Bitter-Pea	2 x 1	200mm	3/m <sup>2</sup>
3	<i>Dillwynia sieberi</i> *	Prickly Parrot-Pea	2 x 1	200mm	3/m <sup>2</sup>
4	<i>Grevillea buxifolia</i> **	Grey Spider Flower	2 x 2	200mm	3/m <sup>2</sup>
5	<i>Grevillea mucronulata</i> **	Green Grevillea	1 x 2	200mm	3/m <sup>2</sup>
6	<i>Grevillea sericea</i> **	Silky Grevillea	2 x 2	200mm	3/m <sup>2</sup>
7	<i>Indigofera australis</i> *	Australian Indigo	2 x 2	200mm	3/m <sup>2</sup>
8	<i>Rubus parvifolius</i> *	Native Raspberry	2 x 2	200mm	3/m <sup>2</sup>
	<i>Zieria smithii</i> **	Sandfly Zieria	2 x 1.5	200mm	3/m <sup>2</sup>

### Ground Floor - Groundcover & Grasses (GFMIX02)

Image	Botanic Name	Common Name	H x W (m)	Pot Size	Spacing
9	<i>Dianella caerulea</i> **	Blue Flax Lily	0.6 x 0.8	140mm	6/m <sup>2</sup>
	<i>Dianella longifolia</i> *	Smooth Flax Lily	0.8 x 0.5	140mm	6/m <sup>2</sup>
10	<i>Dichondra repens</i> *	Kidney Weed	0.2 x 2	140mm	6/m <sup>2</sup>
11	<i>Hardenbergia violacea</i> *	False Sarsaparilla	2 x 3	140mm	6/m <sup>2</sup>
12	<i>Lomandra filiformis</i> *	Wattle Mat Rush	0.4 x 0.4	140mm	6/m <sup>2</sup>
13	<i>Panicum simile</i> *	Two Colour Panic	0.7 x 0.5	140mm	6/m <sup>2</sup>
14	<i>Pratia purpurascens</i> *	White Root	0.2 x 1	140mm	6/m <sup>2</sup>
15	<i>Themeda australis</i> *	Kangaroo Grass	1 x 0.5	140mm	6/m <sup>2</sup>
16	<i>Viola hederacea</i> **	Native Violet	0.3 x 2	140mm	6/m <sup>2</sup>

\* Cumberland Plain Woodland species

\*\* Australian Native Plant Species

### Extensive Green Roof Plants (RPMIX01)

Image	Botanic Name	Common Name	H x W (m)	Pot Size	Spacing
1	<i>Banksia spinulosa</i> 'Birthday Candles' **	Banksia Birthday Candles	0.5 x 1	140mm	6/m <sup>2</sup>
	<i>Carpobrotus rossii</i> **	Pigface	0.4 x 3	140mm	6/m <sup>2</sup>
	<i>Dampiera stricta</i> **	Blue Dampiera	0.4 x 0.4	140mm	6/m <sup>2</sup>
	<i>Entolasia stricta</i> **	Wiry Panic	1 x 0.5	140mm	6/m <sup>2</sup>
2	<i>Myoporum parvifolium</i> 'Yareena' **	Creeping Boobialla Yareena	0.3 x 1.8	200mm	6/m <sup>2</sup>
3	<i>Rosmarinus officinalis prostrata</i>	Prostrate Rosemary	0.3 x 1	140mm	6/m <sup>2</sup>
4	<i>Russelia equisetiformis</i>	Coral Plant	1.5 x 0.8	140mm	6/m <sup>2</sup>
	<i>Sedum</i> sp.	Stonecrop	0.2 x 0.2	140mm	6/m <sup>2</sup>
	<i>Themeda triandra</i> *	Kangaroo Grass	0.9 x 0.6	140mm	6/m <sup>2</sup>

### Roof Terraces - Trees

Image	Botanic Name	Common Name	H x W (m)	Pot Size
5	<i>Backhousia citriodora</i> **	Lemon Myrtle	6 x 3	200L
6	<i>Banksia integrefolia</i> **	Coastal Banksia	8 x 6	200L
7	<i>Calistemon citrinus</i> 'Kings Park Special' **	Kings Park Special	5 x 3	200L
8	<i>Melaleuca decora</i> *	White Feather Honeymyrtle	8 x 6	200L
9	<i>Acacia parramattensis</i> *	Sydney Green Wattle	8 x 5	200L
10	<i>Tristanopsis laurina</i> **	Water Gum	10 x 4	200L

\* Cumberland Plain Woodland species

\*\* Australian Native Plant Species

### Roof Terraces - Shrubs (RTMIX01)

Image	Botanic Name	Common Name	H x W (m)	Pot Size	Spacing
1	<i>Banksia spinulosa</i> 'Birthday Candles' **	Birthday Candles	0.5 x 1	200mm	3/m <sup>2</sup>
2	<i>Bossiaea heterophylla</i> **	Variable Bossiaea	1 x 1	200mm	3/m <sup>2</sup>
3	<i>Correa alba</i> **	White Correa	1 x 1	200mm	3/m <sup>2</sup>
	<i>Correa reflexa</i> **	Pink Correa	1 x 1	200mm	3/m <sup>2</sup>
4	<i>Eremophila subfloccosa</i> **	Emu Bush	1 x 2	200mm	3/m <sup>2</sup>
5	<i>Grevillea mucronulata</i> **	Green Grevillea	1 x 2	200mm	3/m <sup>2</sup>
	<i>Grevillea sericea</i> **	Silky Grevillea	1 x 1	200mm	3/m <sup>2</sup>
6	<i>Kunzea capitata</i> **	Pink Kunzea	1 x 2	200mm	3/m <sup>2</sup>
7	<i>Westringia fruticosa</i> **	Coastal Rosemary	1 x 1	200mm	3/m <sup>2</sup>

### Roof Terraces - Groundcover (RTMIX02)

Image	Botanic Name	Common Name	H x W (m)	Pot Size	Spacing
8	<i>Ajuga australis</i> *	Australian Bugle	0.4 x 0.8	140mm	6/m <sup>2</sup>
9	<i>Clematis glycinoides</i> *	Old Mans Vine	0.4 x 0.6	200mm	6/m <sup>2</sup>
10	<i>Carpobrotus modestus</i> **	Pig Face	0.1 x 0.5	140mm	6/m <sup>2</sup>
	<i>Dichondra repens</i> *	Kidney Weed	0.2 x 0.5	140mm	6/m <sup>2</sup>
	<i>Hardenbergia violacea</i> *	Purple Coral Pea	0.2 x 0.5	200mm	6/m <sup>2</sup>
11	<i>Poa labillardieri</i> *	Tussock Grass	1 x 1	200mm	6/m <sup>2</sup>
13	<i>Plecthranthus parviflorus</i> *	Spur Flower	0.5 x 0.4	140mm	6/m <sup>2</sup>
	<i>Pratia purpurascens</i> *	White Root	0.2 x 1	140mm	6/m <sup>2</sup>
14	<i>Myoporum parvifolium</i> **	Creeping Boobialla	0.2 x 1	140mm	6/m <sup>2</sup>
15	<i>Themeda australis</i> *	Kangaroo Grass	0.3 x 0.3	140mm	6/m <sup>2</sup>
16	<i>Viola hederacea</i> **	Native Violet	0.2 x 0.5	140mm	6/m <sup>2</sup>

### Roof Terraces - Edible Plants (RTMIX03)

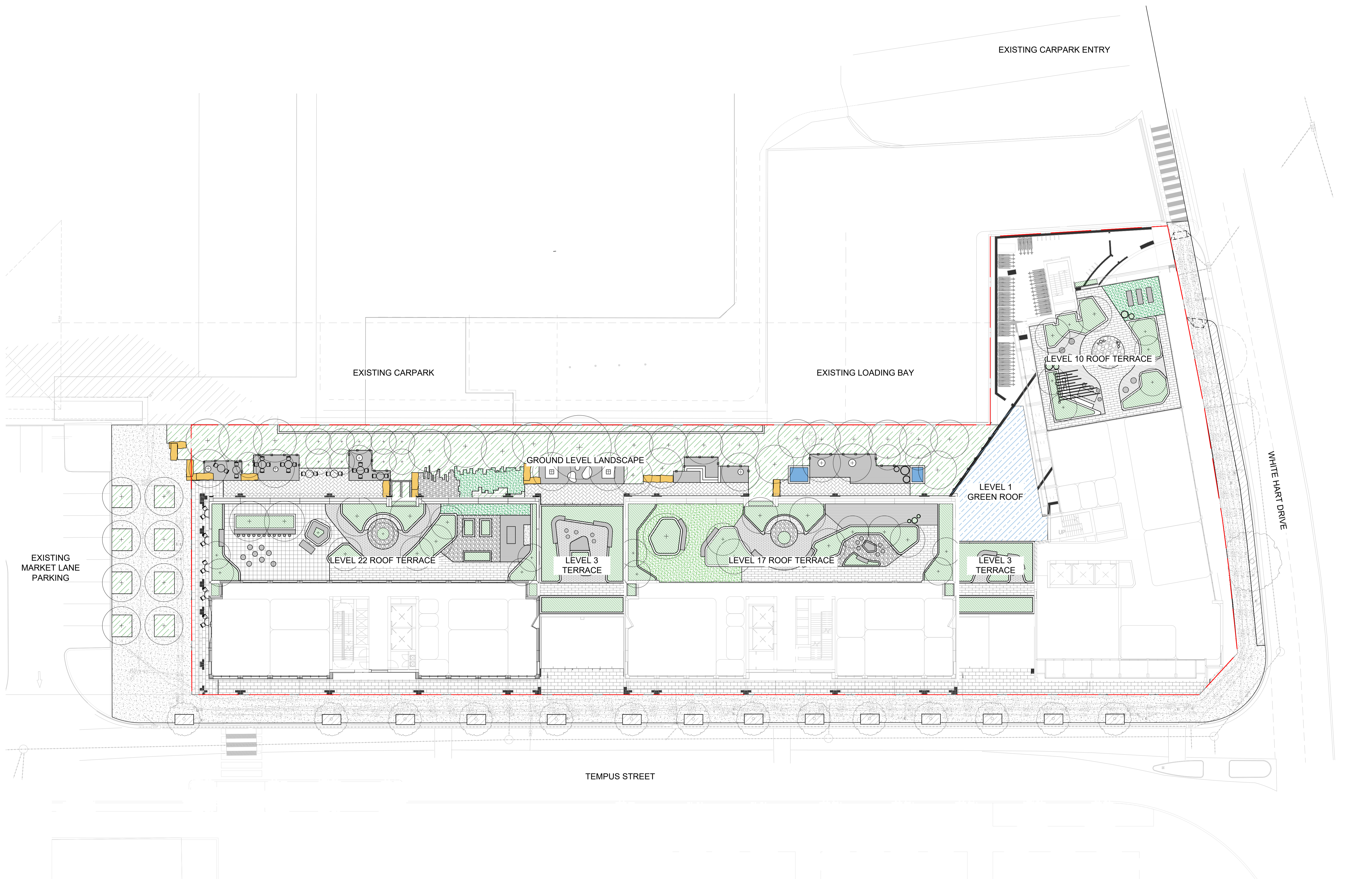
Image	Botanic Name	Common Name	H x W (m)	Pot Size	Spacing
	<i>Anthem graveolens</i>	Dill	0.2 x 0.2	75mm	11/m <sup>2</sup>
	<i>Cucumis sativus</i>	Cucumber	0.2 x 0.2	75mm	11/m <sup>2</sup>
	<i>Foeniculum vulgare</i>	Fennel	0.2 x 0.2	75mm	11/m <sup>2</sup>
	<i>Lactuca sativa cultivars</i>	Lettuce	0.2 x 0.2	75mm	11/m <sup>2</sup>
	<i>Rosmarinus</i> sp.	Rosemary	0.2 x 0.2	75mm	11/m <sup>2</sup>
	<i>Solanum tuberosum</i>	Potato	0.2 x 0.2	75mm	11/m <sup>2</sup>
	<i>Thymus vulgaris</i>	Thyme	0.2 x 0.2	75mm	11/m <sup>2</sup>

### Facade Plants (RTMIX04)

Image	Botanic Name	Common Name	H x W (m)	Pot Size	Spacing
1	<i>Banksia spinulosa</i> 'Birthday Candles' **	Banksia Birthday Candles	0.5 x 1	140mm	6/m <sup>2</sup>
	<i>Carpobrotus rossii</i> **	Pigface	0.4 x 3	140mm	6/m <sup>2</sup>
	<i>Callistemon viminalis</i> 'Green John'	Bottlebrush	0.6 x 0.6	140mm	4/m <sup>2</sup>
2	<i>Myoporum parvifolium</i> 'Yareena' **	Creeping Boobialla Yareena	0.3 x 1.8	200mm	6/m <sup>2</sup>
3	<i>Rosmarinus officinalis prostrata</i>	Prostrate Rosemary	0.3 x 1	140mm	6/m <sup>2</sup>
4	<i>Russelia equisetiformis</i>	Coral Plant	1.5 x 0.8	140mm	6/m <sup>2</sup>
	<i>Sedum</i> sp.	Stonecrop	0.2 x 0.2	140mm	6/m <sup>2</sup>
16	<i>Viola hederacea</i> **	Native Violet	0.2 x 0.5	140mm	6/m <sup>2</sup>
7	<i>Westringia fruticosa</i> 'Blue Gem' **	Coastal Rosemary	1 x 1	200mm	3/m <sup>2</sup>

\* Cumberland Plain Woodland species

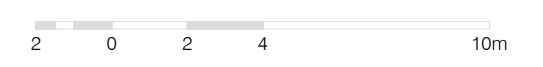
\*\* Australian Native Plant Species



This drawing is to be read in conjunction with all landscape architecture schedules, technical specifications, and other consultant drawings. Please check and verify all dimensions and site conditions prior to the commencement of any work. Do not scale drawings – refer to figured dimensions only. Please inform OCULUS of any discrepancies for clarification before proceeding. Unless otherwise noted this drawing is not for construction. Services shown on this drawing are approximate only, the exact location is to be confirmed on-site by contractor prior to commencement – before you dig (byda.com.au). © 2024

KEY PLAN

SCALE  
 1:200 @ A1



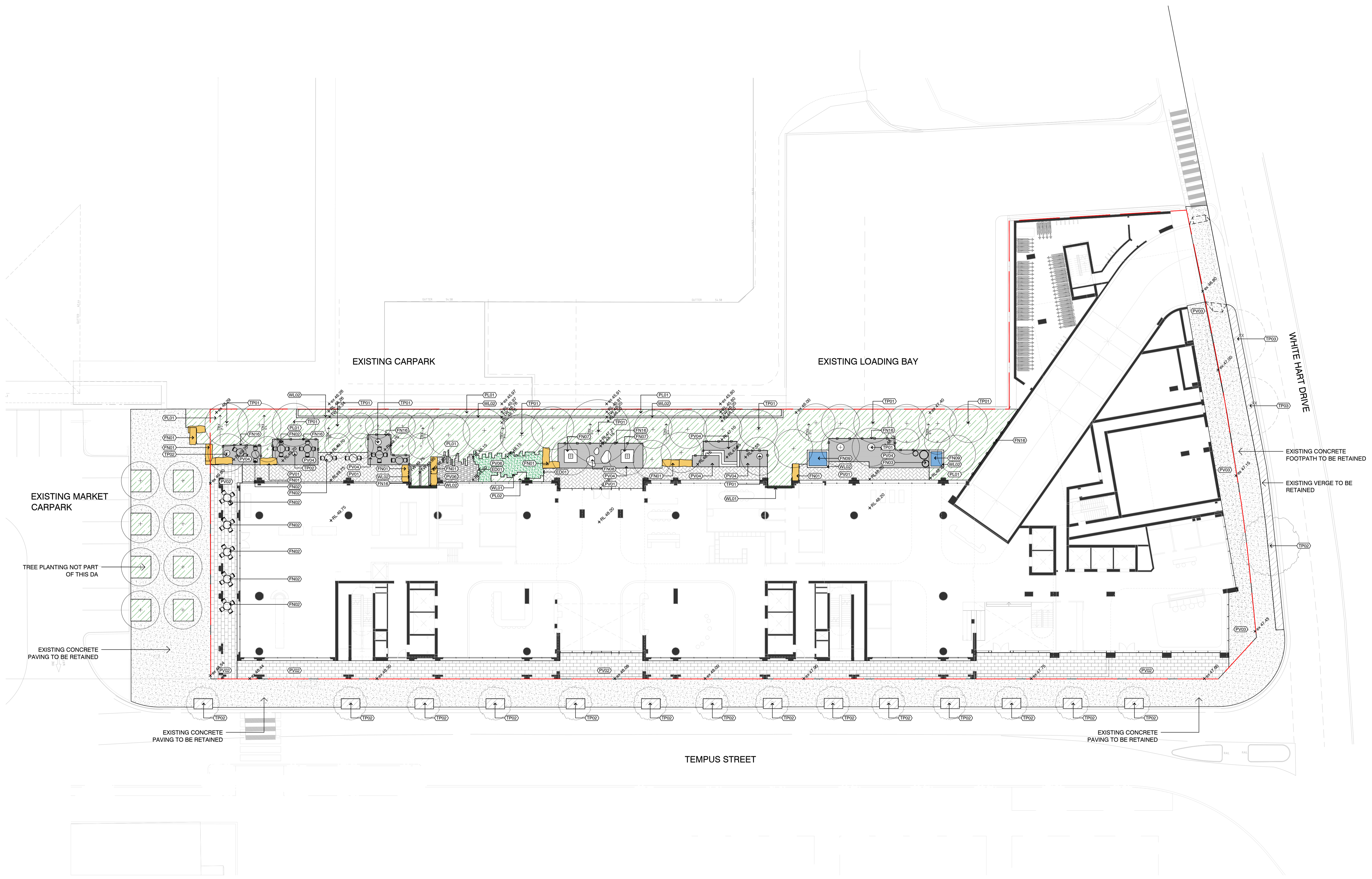
PROJECT S24-022  
 TEMPUS STREET, ROUSE HILL  
 2-30 TEMPUS STREET, ROUSE HILL,  
 NSW 2155, AUSTRALIA  
 STATUS  
 DEVELOPMENT APPLICATION  
 CLIENT  
 FREECITY GROUP  
 ARCHITECT  
 ARCHITECTUS

ISSUE	DATE	AMENDMENT	BY	APPROVED
A	04.04.25	SSDA	GF	KS
B	16.05.25	SSDA	GH	KS
C	10.06.25	SSDA	GF	KS

DRAWING TITLE  
**SITE PLAN**

DRAWING NUMBER  
**L003**

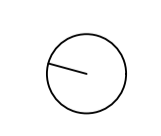
REVISION  
**C**



This drawing is to be read in conjunction with all landscape architecture schedules, technical specifications, and other consultant drawings. Please check and verify all dimensions and site conditions prior to the commencement of any work. Do not scale drawings – refer to figured dimensions only. Please inform OCULUS of any discrepancies for clarification before proceeding. Unless otherwise noted this drawing is not for construction. Services shown on this drawing are approximate only, the exact location is to be confirmed on-site by contractor prior to commencement – before you dig (byda.com.au). © 2024

KEY PLAN

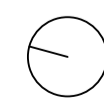
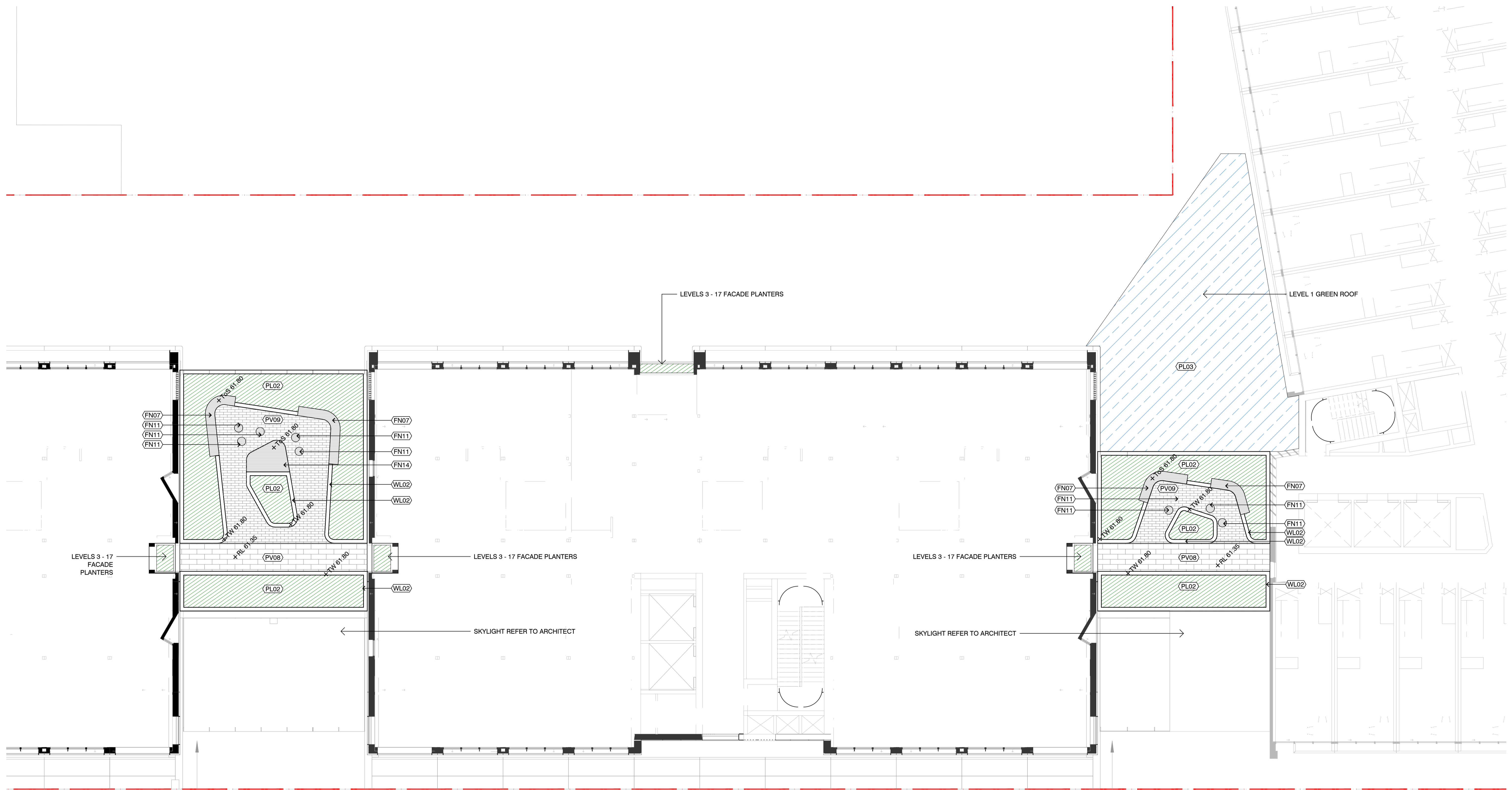
SCALE



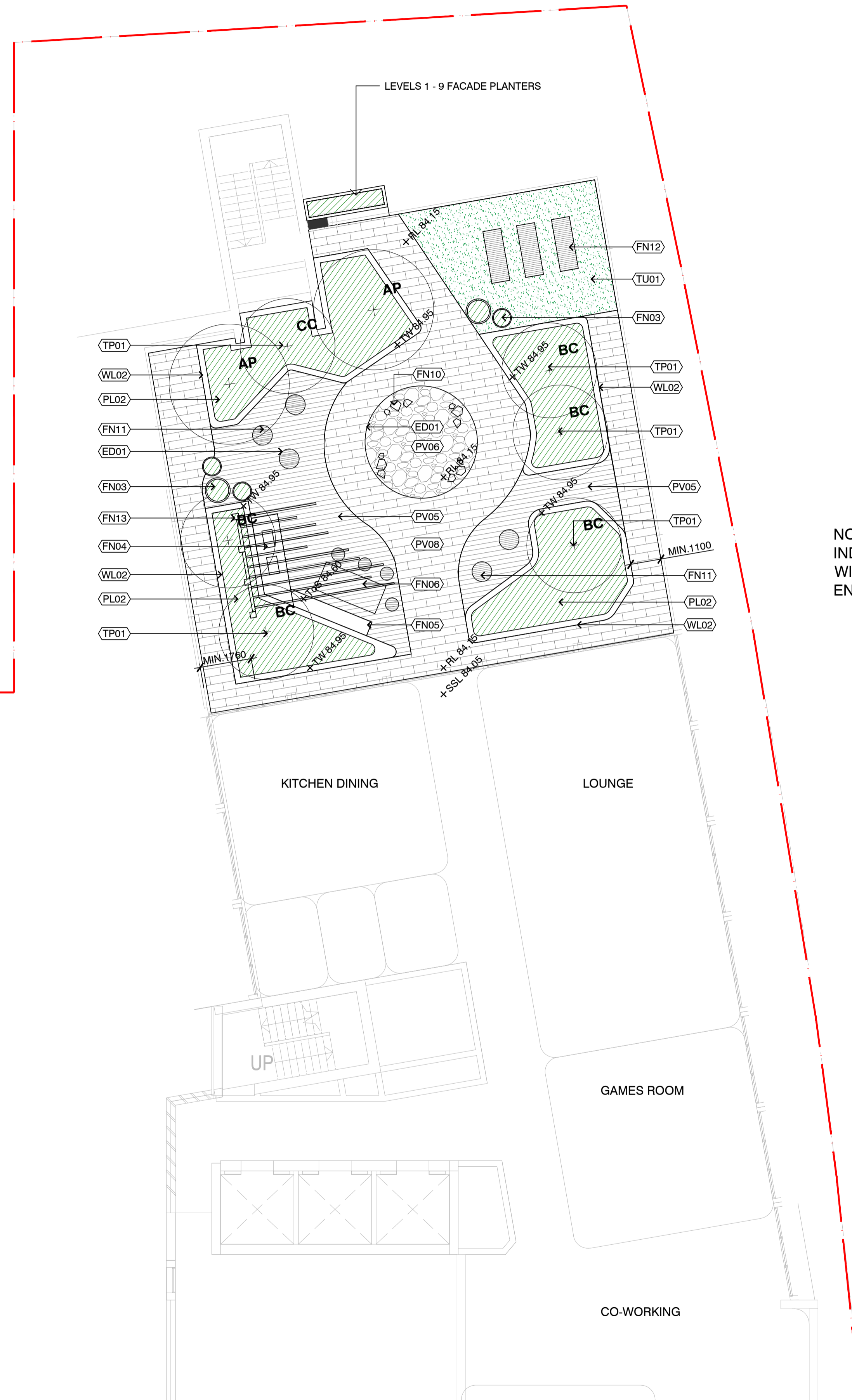
**PROJECT S24-022**  
 TEMPUS STREET, ROUSE HILL  
 2-30 TEMPUS STREET, ROUSE HILL,  
 NSW 2155, AUSTRALIA  
**STATUS**  
 DEVELOPMENT APPLICATION  
**CLIENT**  
 FREECITY GROUP  
**ARCHITECT**  
 ARCHITECTUS

ISSUE	DATE	AMENDMENT	BY	APPROVED
A	04.04.25	SSDA	GF	KS

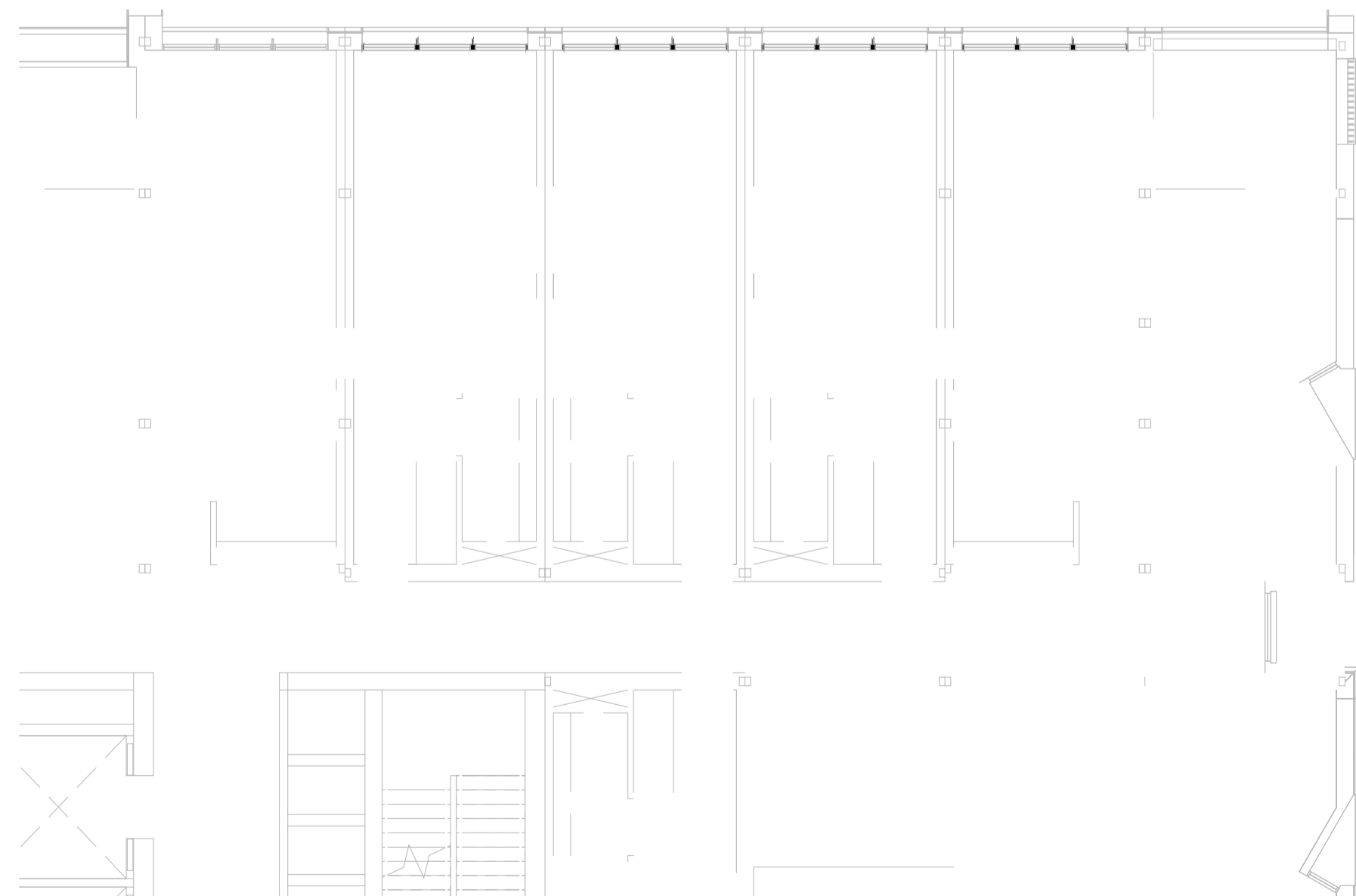
**DRAWING TITLE**  
 SURFACE FINISHES - GROUND FLOOR  
**DRAWING NUMBER**  
 L200  
**REVISION**  
 A



ISSUE	DATE	AMENDMENT	BY	APPROVED
A	04.04.25	SSDA	GF	KS
B	16.05.25	SSDA	GH	KS
C	10.06.25	SSDA	GF	KS



NOTE: SLAB LEVEL ON ROOF TERRACES ARE INDICATIVE ONLY. FURTHER COORDINATIONS WITH ARCHITECT AND STRUCTURAL ENGINEERS REQUIRED



This drawing is to be read in conjunction with all landscape architecture schedules, technical specifications, and other consultant drawings. Please check and verify all dimensions and site conditions prior to the commencement of any work. Do not scale drawings - refer to figured dimensions only. Please inform OCULUS of any discrepancies for clarification before proceeding. Unless otherwise noted this drawing is not for construction. Services shown on this drawing are approximate only, the exact location is to be confirmed on-site by contractor prior to commencement - before you dig (byda.com.au). © 2024

KEY PLAN

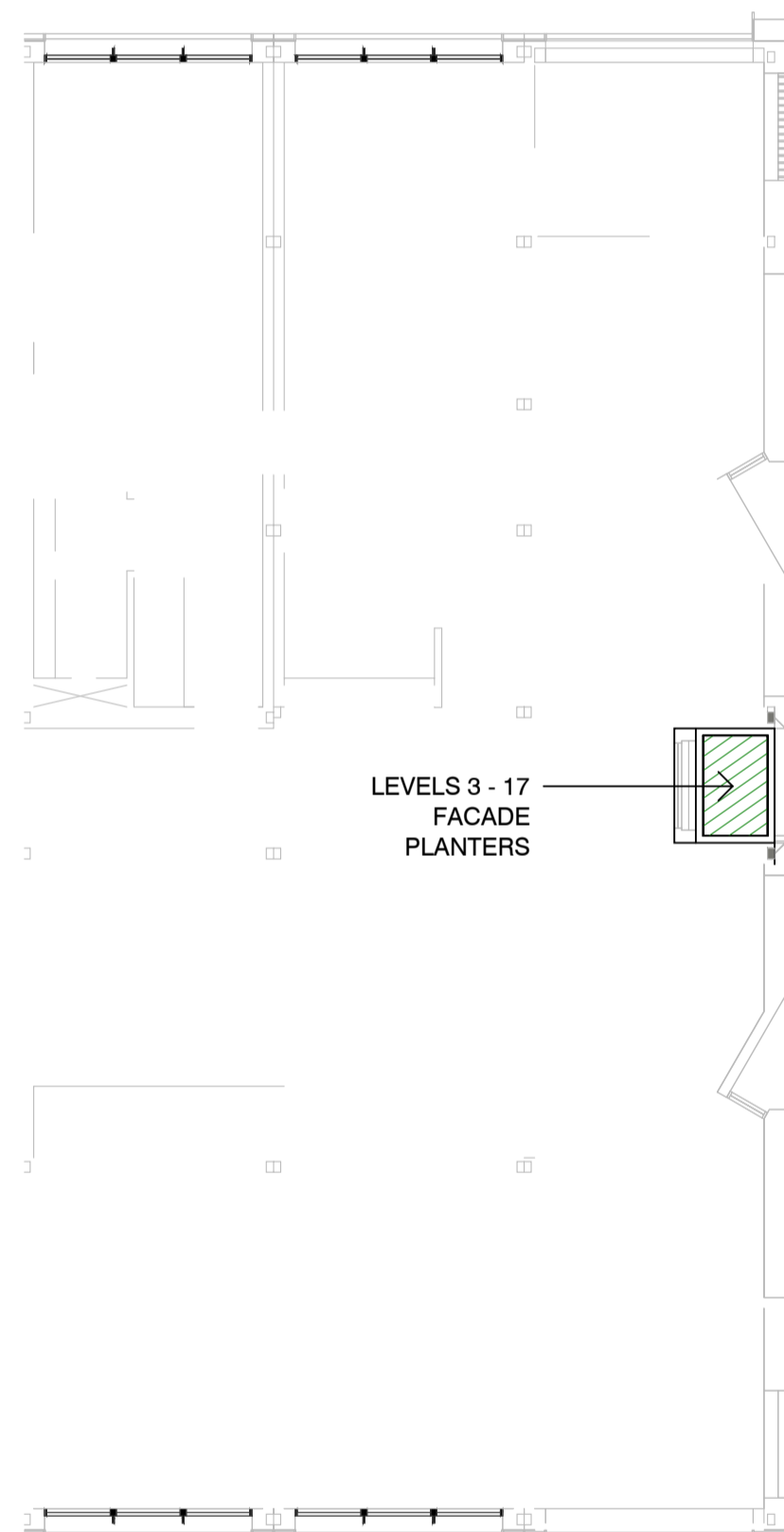
SCALE



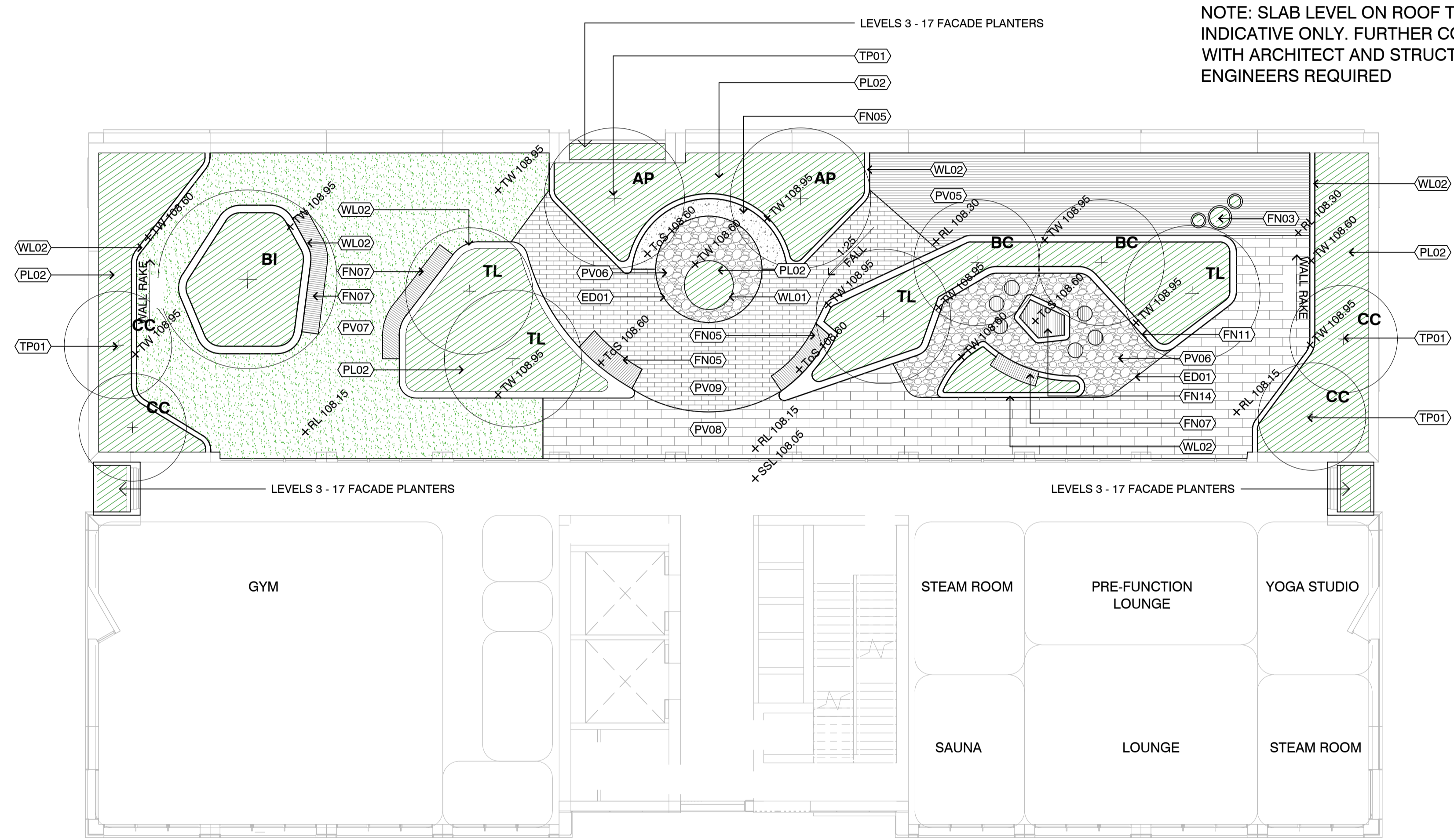
PROJECT S24-022  
 TEMPUS STREET, ROUSE HILL,  
 2-30 TEMPUS STREET, ROUSE HILL,  
 NSW 2155, AUSTRALIA  
 STATUS  
 DEVELOPMENT APPLICATION  
 CLIENT  
 FREECITY GROUP  
 ARCHITECT  
 ARCHITECTUS

ISSUE	DATE	AMENDMENT	BY	APPROVED
A	04.04.25	SSDA	GF	KS
B	16.05.25	SSDA	GH	KS

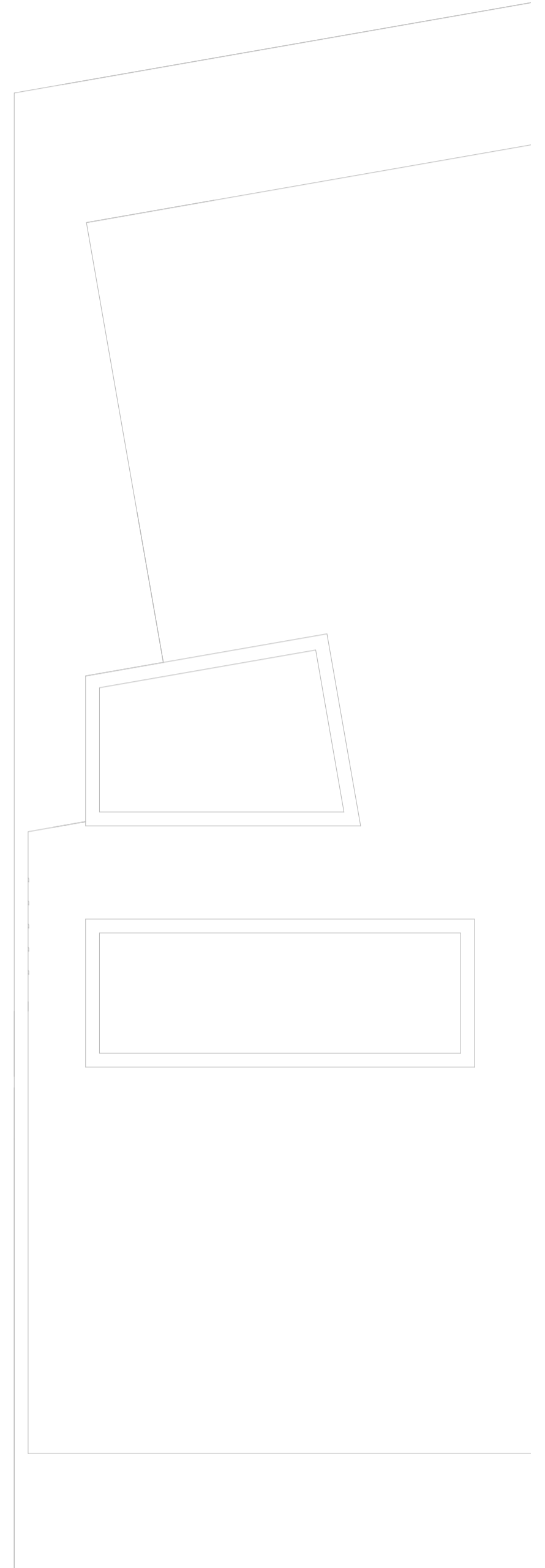
DRAWING TITLE  
**SURFACE FINISHES - LEVEL 10 TERRACE**  
 DRAWING NUMBER  
**L220**  
 REVISION  
**B**



LEVELS 3 - 17  
FACADE  
PLANTERS



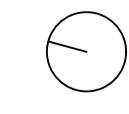
NOTE: SLAB LEVEL ON ROOF TERRACES ARE INDICATIVE ONLY. FURTHER COORDINATIONS WITH ARCHITECT AND STRUCTURAL ENGINEERS REQUIRED



This drawing is to be read in conjunction with all landscape architecture schedules, technical specifications, and other consultant drawings. Please check and verify all dimensions and site conditions prior to the commencement of any work. Do not scale drawings - refer to figured dimensions only. Please inform OCULUS of any discrepancies for clarification before proceeding. Unless otherwise noted this drawing is not for construction. Services shown on this drawing are approximate only, the exact location is to be confirmed on-site by contractor prior to commencement - before you dig (byda.com.au).

KEY PLAN

SCALE

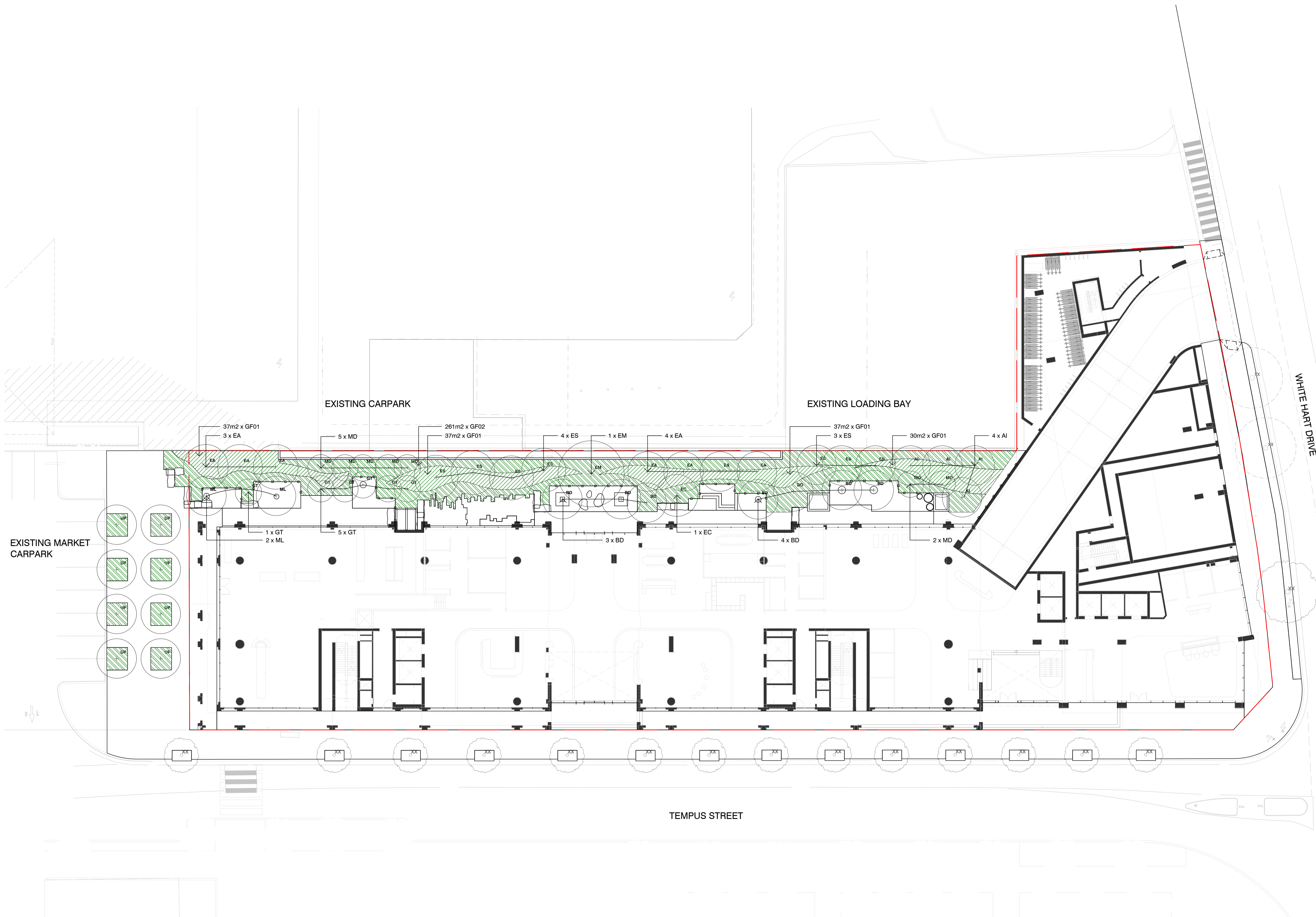


PROJECT S24-022  
TEMPUS STREET, ROUSE HILL  
2-30 TEMPUS STREET, ROUSE HILL,  
NSW 2155, AUSTRALIA  
STATUS  
DEVELOPMENT APPLICATION  
CLIENT  
FREECITY GROUP  
ARCHITECT  
ARCHITECTUS

ISSUE	DATE	AMENDMENT	BY	APPROVED
A	04.04.25	SSDA	GF	KS
B	16.05.25	SSDA	GH	KS

DRAWING TITLE  
**SURFACE FINISHES - LEVEL 17 TERRACE**  
DRAWING NUMBER  
**L230**  
REVISION  
**B**



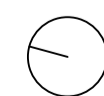


This drawing is to be read in conjunction with all landscape architecture schedules, technical specifications, and other consultant drawings. Please check and verify all dimensions and site conditions prior to the commencement of any work. Do not scale drawings – refer to figured dimensions only. Please inform OCULUS of any discrepancies for clarification before proceeding. Unless otherwise noted this drawing is not for construction. Services shown on this drawing are approximate only, the exact location is to be confirmed on-site by contractor prior to commencement – before you dig (byda.com.au). © 2024

KEY PLAN

SCALE  
 1:200 @ A1

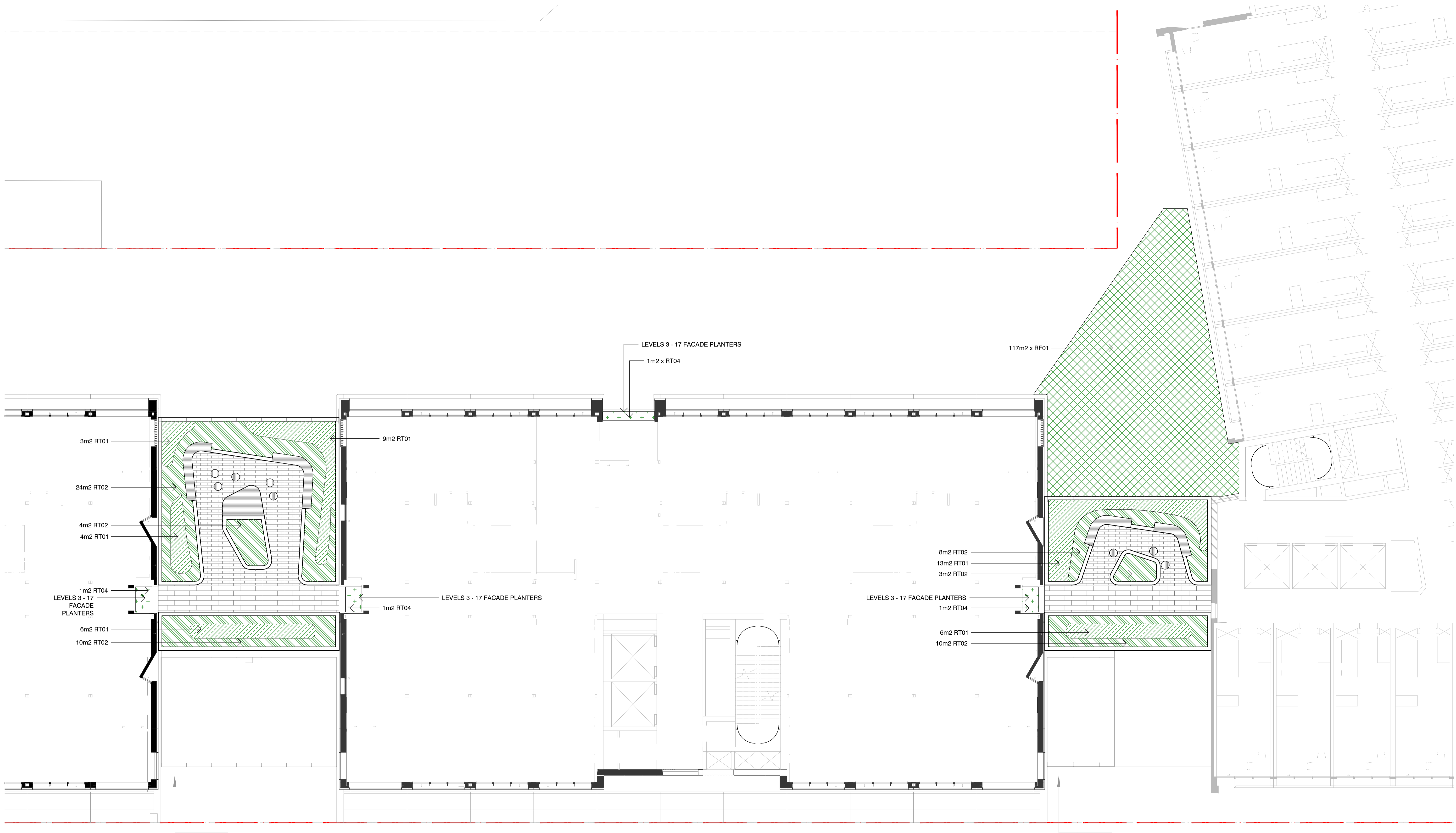
2 0 2 4 10m

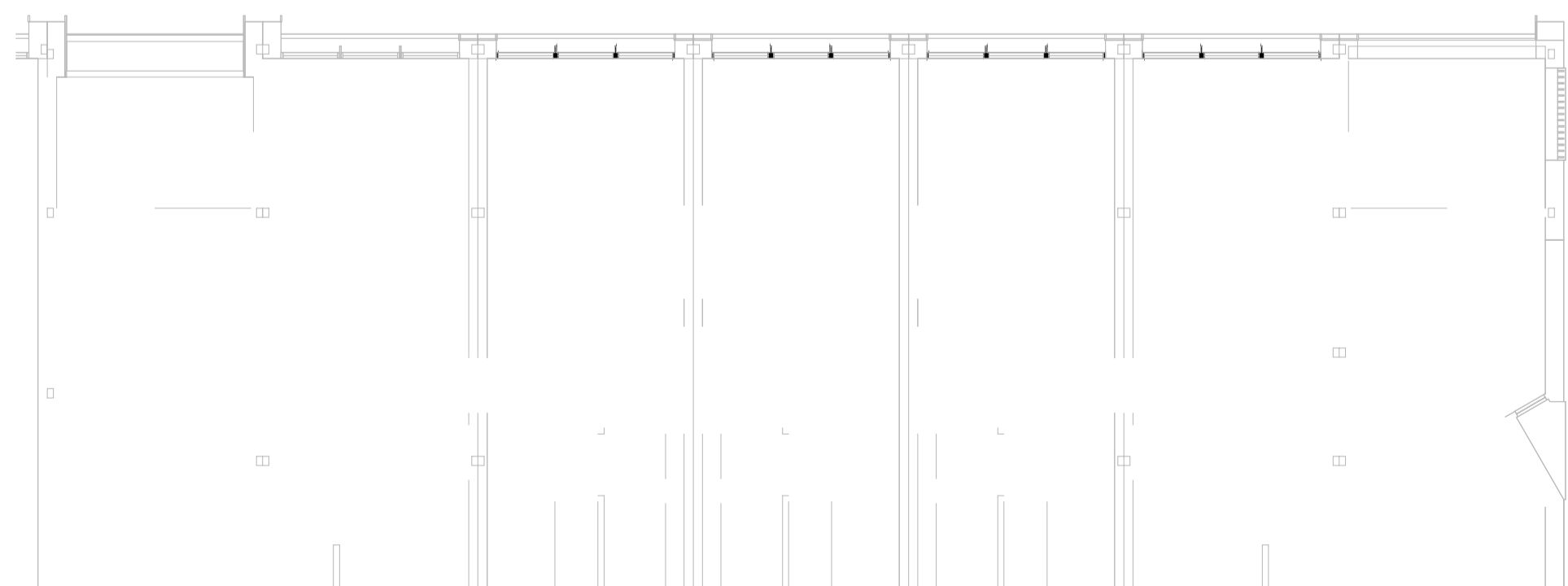
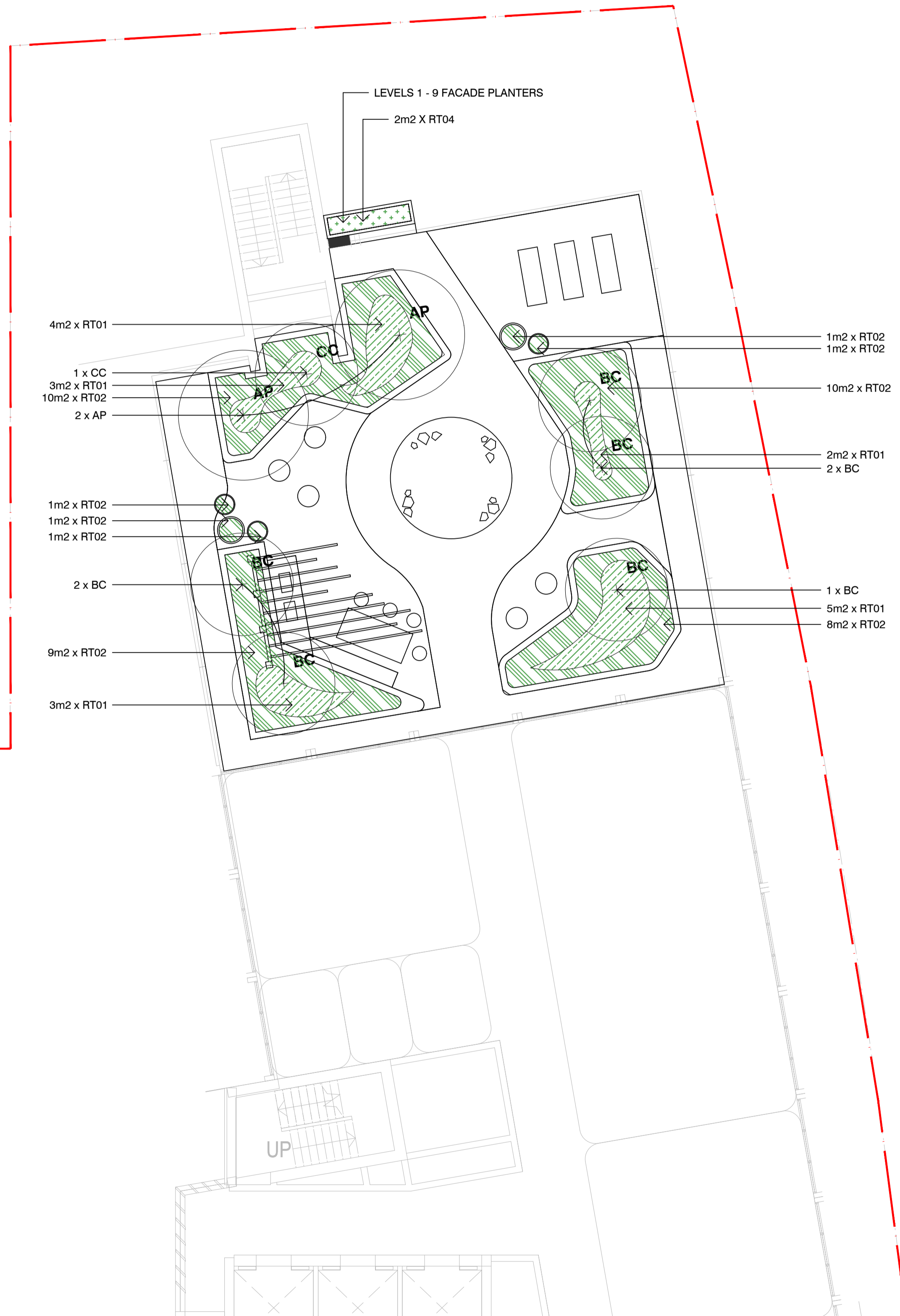


**PROJECT S24-022**  
 TEMPUS STREET, ROUSE HILL  
 2-30 TEMPUS STREET, ROUSE HILL,  
 NSW 2155, AUSTRALIA  
**STATUS**  
 DEVELOPMENT APPLICATION  
**CLIENT**  
 FREECITY GROUP  
**ARCHITECT**  
 ARCHITECTUS

ISSUE	DATE	AMENDMENT	BY	APPROVED
A	04.04.25	SSDA	GH	KS

**DRAWING TITLE**  
**PLANTING PLAN - GROUND FLOOR**  
**DRAWING NUMBER**  
**L500**  
**REVISION**  
**A**



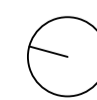


This drawing is to be read in conjunction with all landscape architecture schedules, technical specifications, and other consultant drawings. Please check and verify all dimensions and site conditions prior to the commencement of any work. Do not scale drawings - refer to figured dimensions only. Please inform OCULUS of any discrepancies for clarification before proceeding. Unless otherwise noted this drawing is not for construction. Services shown on this drawing are approximate only, the exact location is to be confirmed on-site by contractor prior to commencement - before you dig (byda.com.au). © 2024

KEY PLAN

SCALE  
1:100 @ A1

1 0 1 2 5m



PROJECT S24-022  
TEMPUS STREET, ROUSE HILL  
2-30 TEMPUS STREET, ROUSE HILL,  
NSW 2155, AUSTRALIA

STATUS  
DEVELOPMENT APPLICATION

CLIENT  
FREECITY GROUP

ARCHITECT  
ARCHITECTUS

ISSUE	DATE	AMENDMENT	BY	APPROVED
A	04.04.25	SSDA	GH	KS
B	16.05.25	SSDA	GH	KS

DRAWING TITLE  
**PLANTING PLAN - LEVEL 10  
TERRACE**

DRAWING NUMBER  
**L520**

REVISION  
**B**

