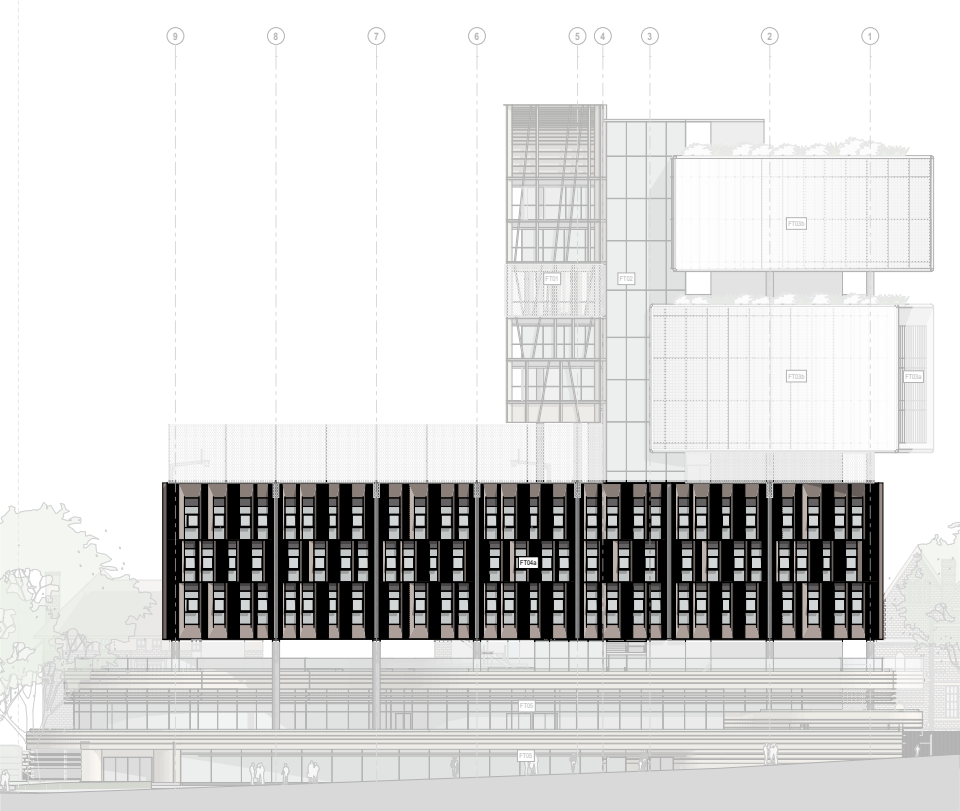


FT04a - Studio Box Facade

The "Studio" Box facade for East and West solar orientations consists of an aluminium framed glazed window system with fixed and openable awning sash windows. The aluminium windows, have angled large format aluminium frames and sit within face brickwork panels on steel shelf angles.

It is proposed to use contemporary face brickwork to the "Studio Box", complimenting the colouration of the existing heritage buildings and the articulation of the facade will be consistent with the proportioning of the adjacent heritage buildings. The face brickwork will be supported on stainless steel shelf angles.



West Elevation



East Elevation

