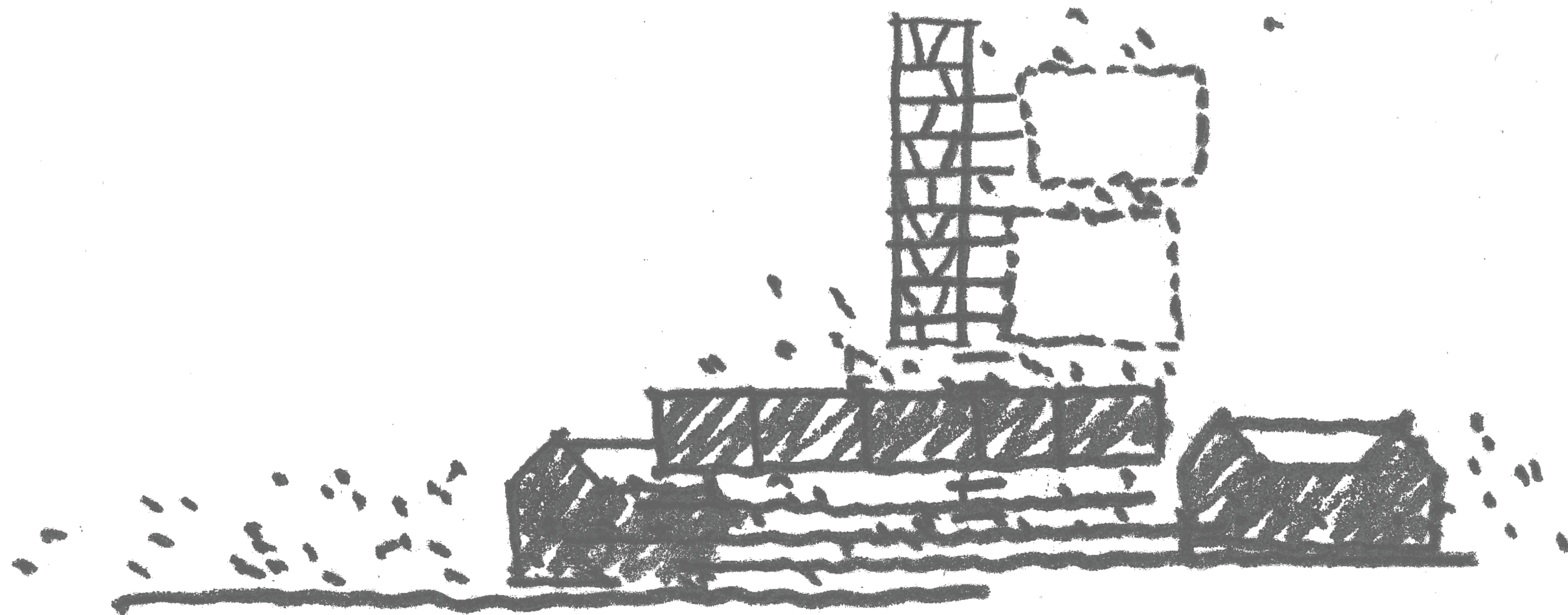
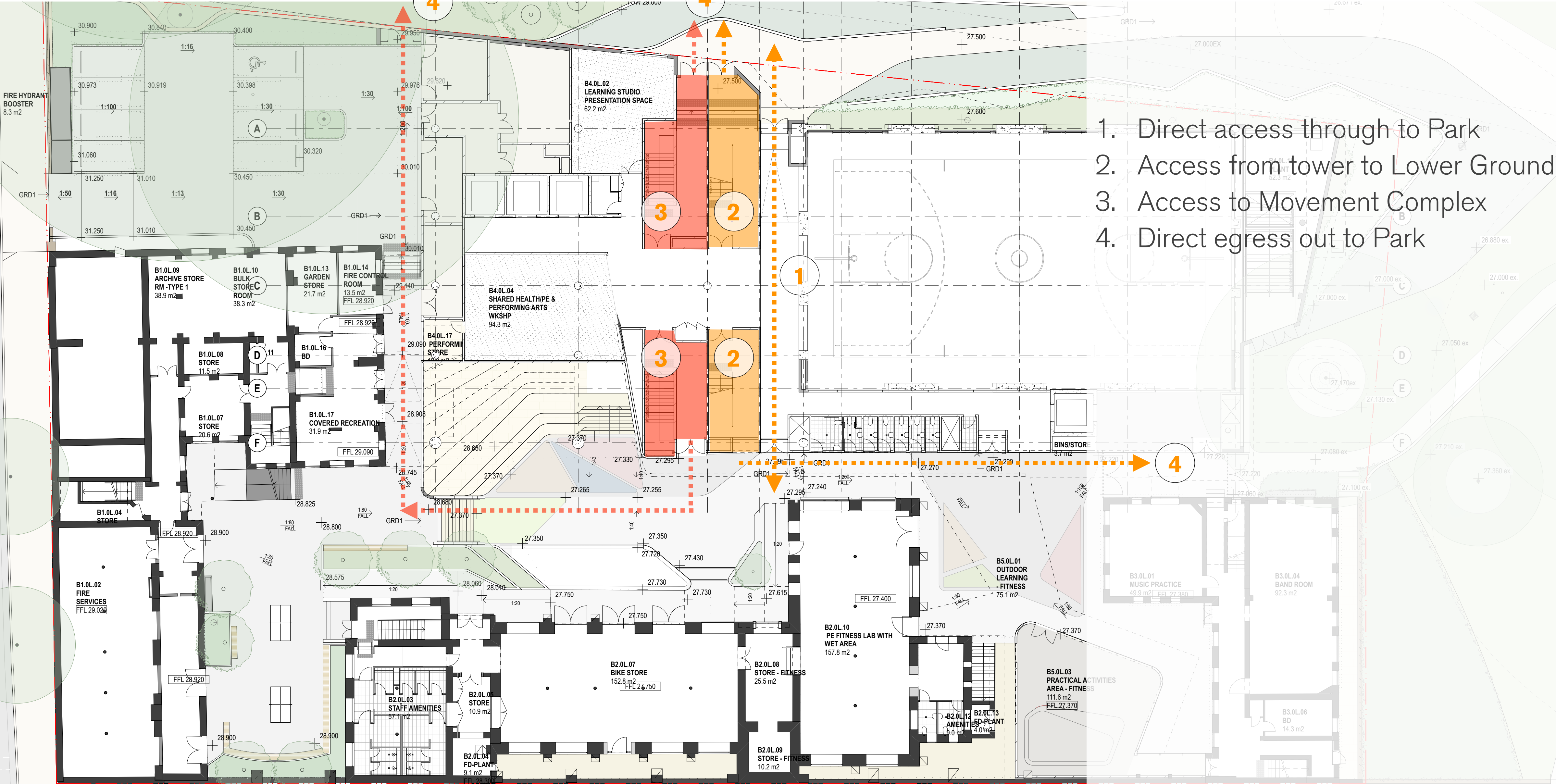


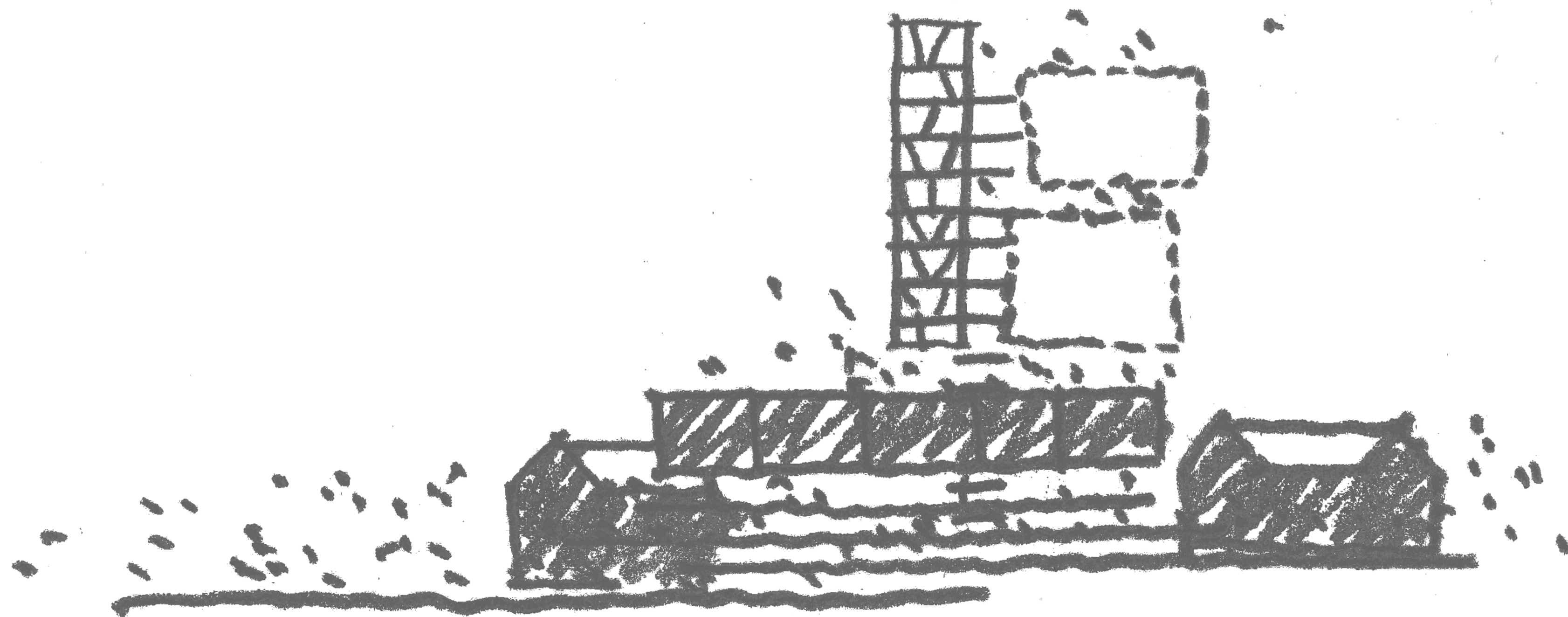
Circulation






Cleveland Street

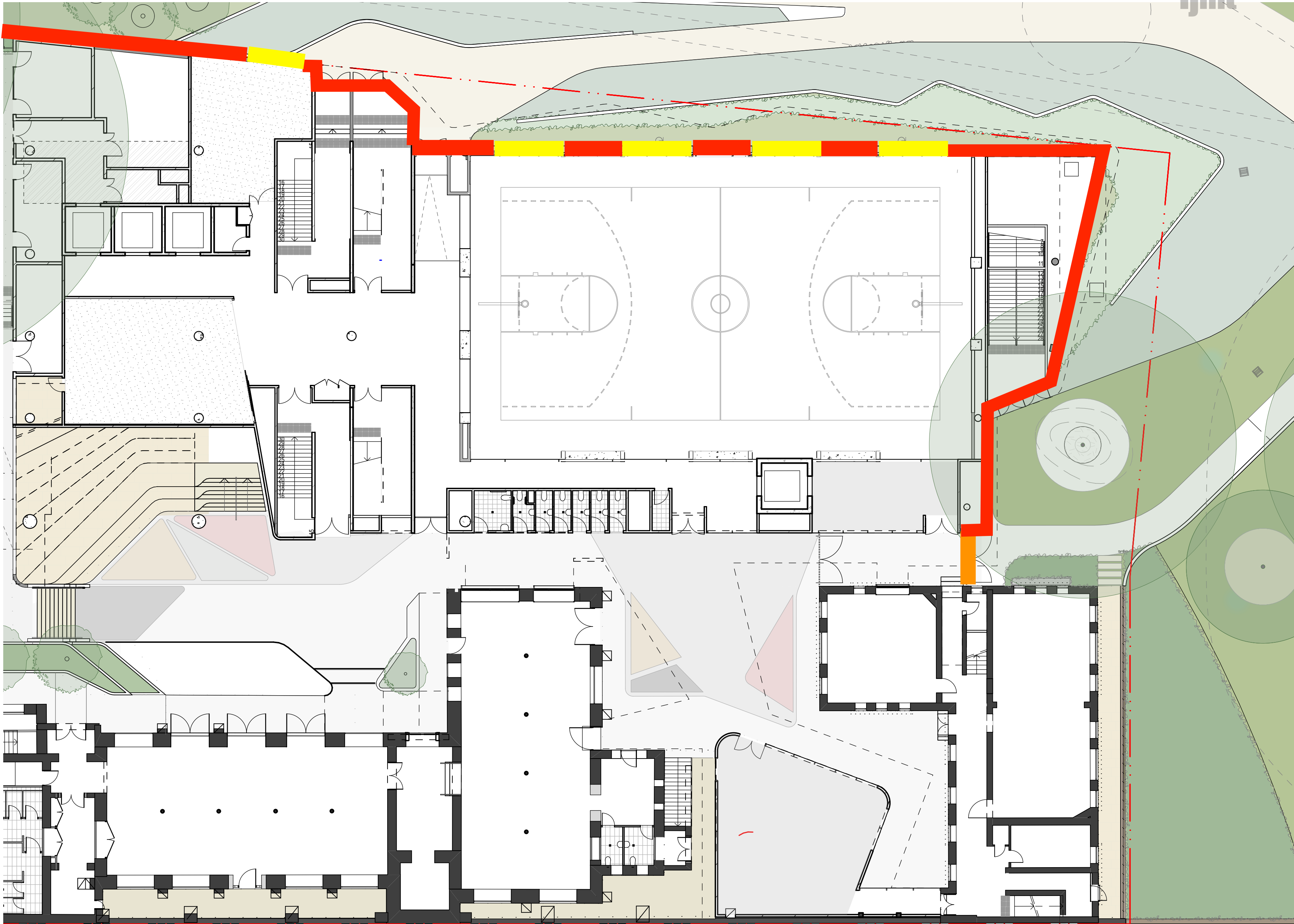


Boundary Condition



Boundary Condition Lower Ground

-  Painted, rendered masonry with graffiti protection
-  Security gate (Keypad)
Potential public secure access
-  Full height automated glazed louvres with protective stainless steel mesh to outside

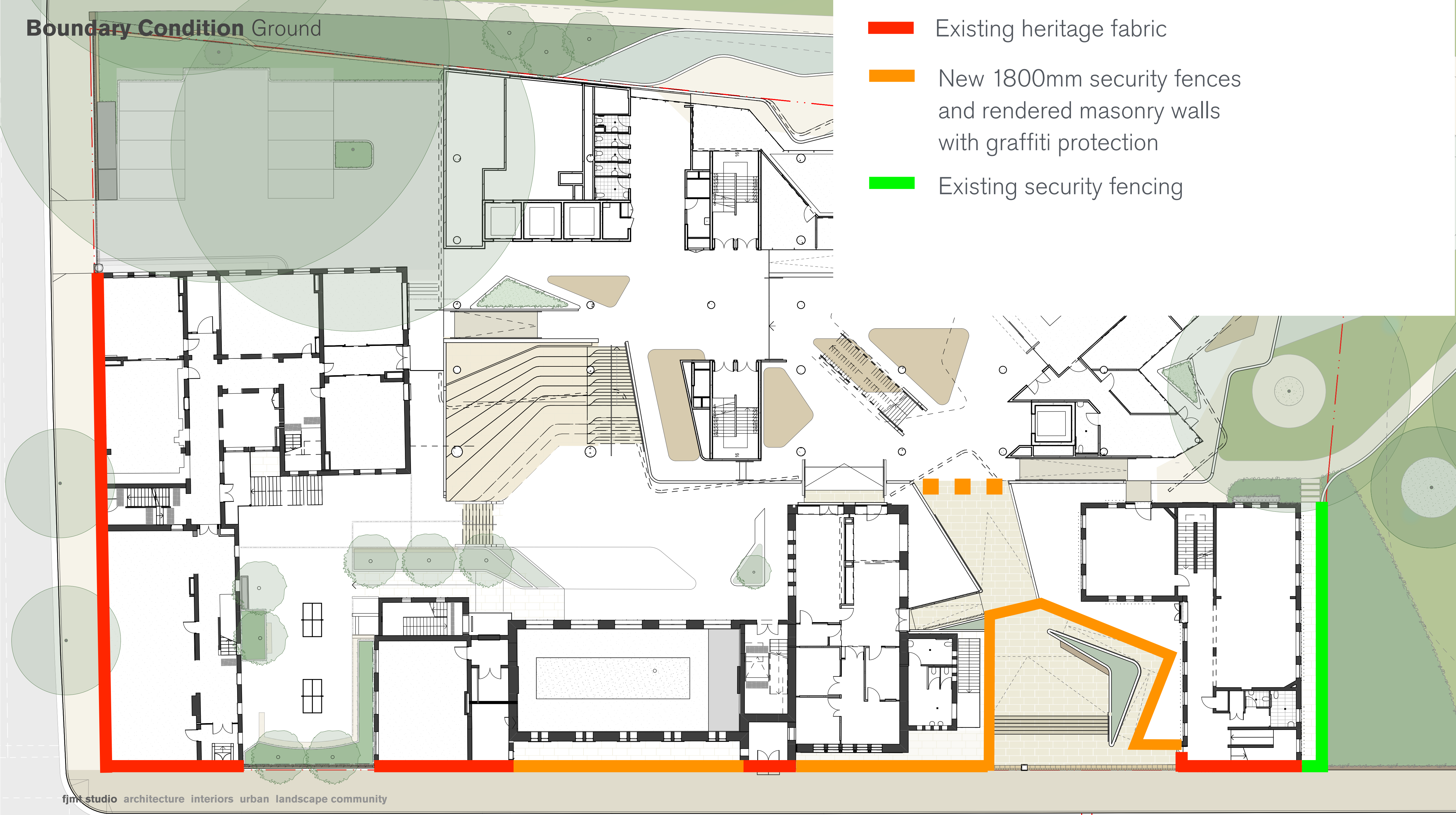




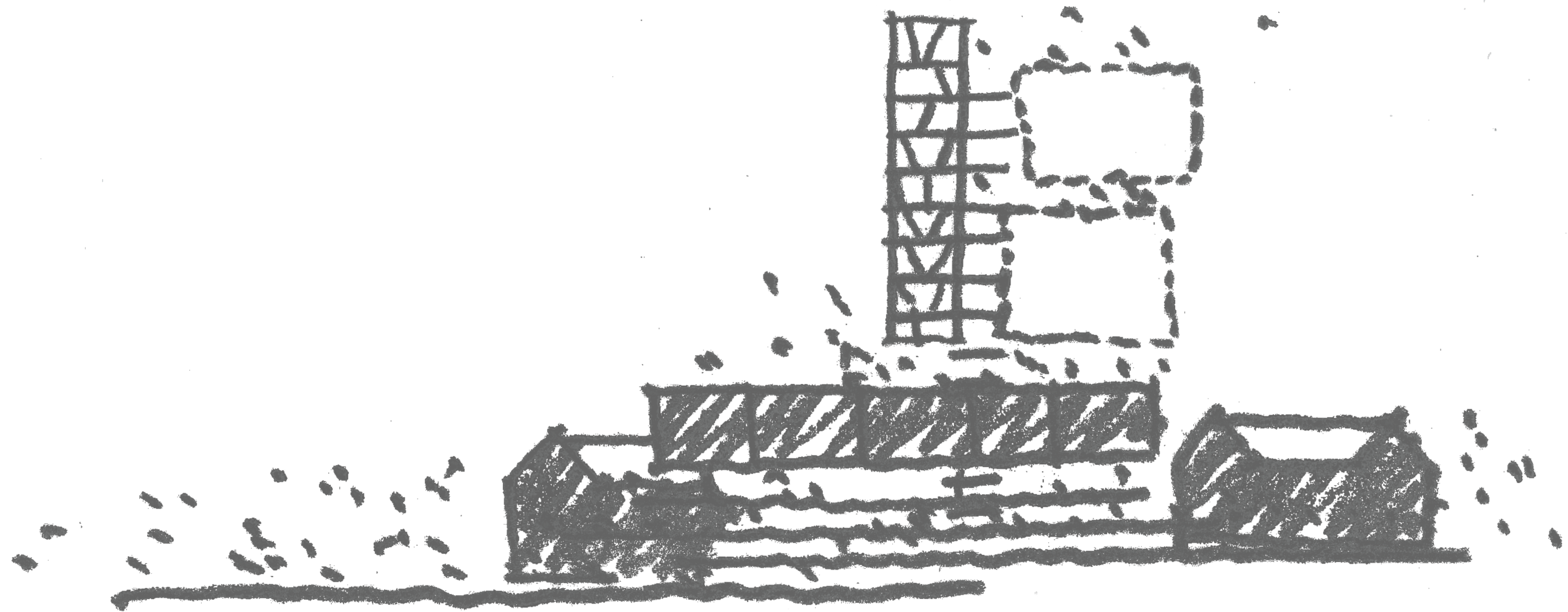
- Painted, rendered masonry with graffiti protection
- Security gate
Emergency egress
- Existing palisade fencing
- Sliding security gate. This gate will be open during extended school hours and closed after hours.
Access after hours to be by keypad

Boundary Condition Ground

- Existing heritage fabric
- New 1800mm security fences and rendered masonry walls with graffiti protection
- Existing security fencing

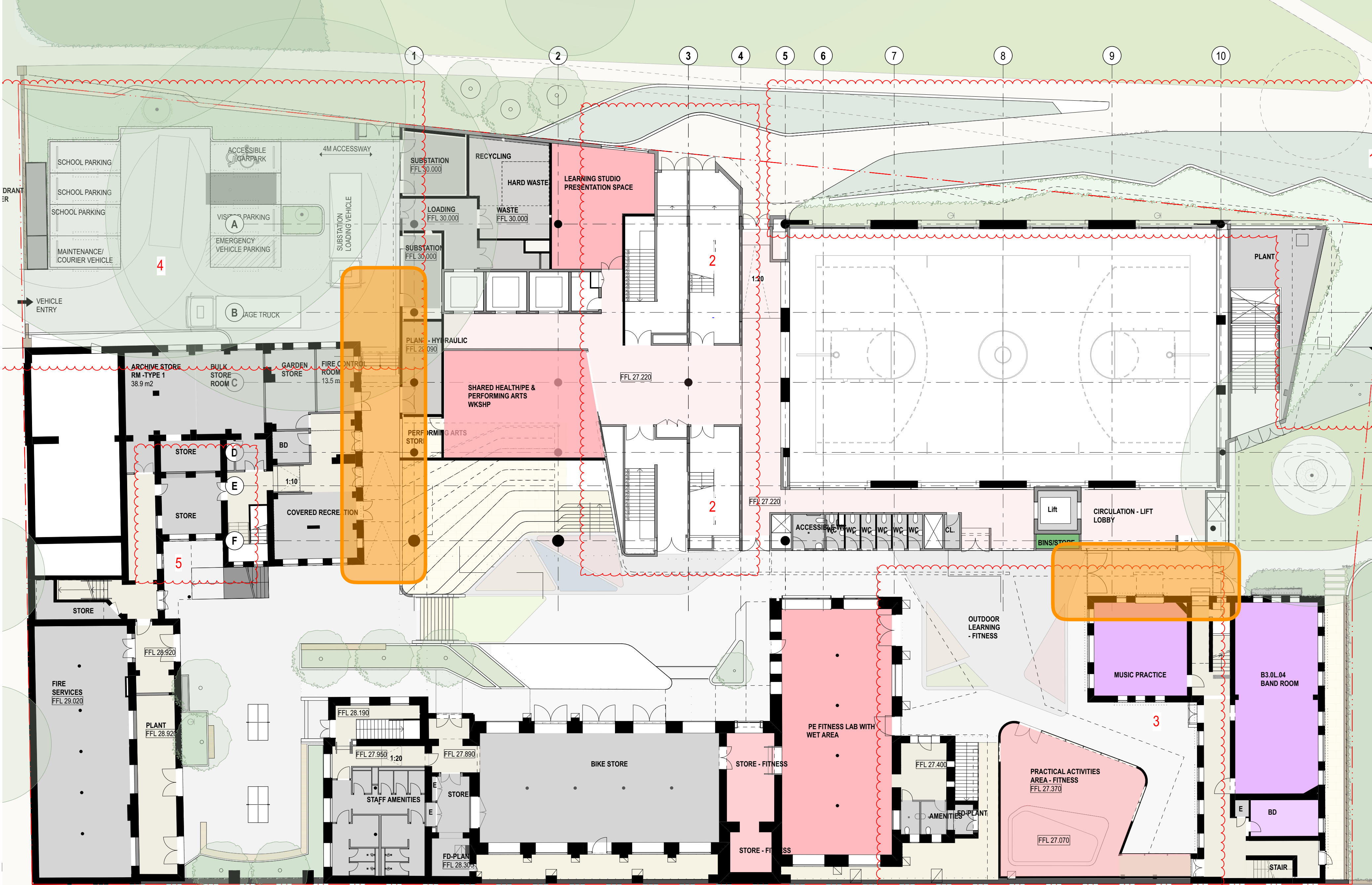


Wind Mitigation

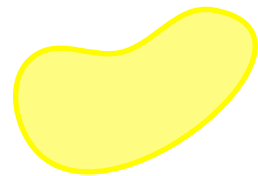


Wind Mitigation Lower ground

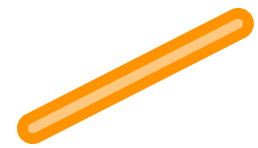
Transient zone therefore any potential increase in conditions here is acceptable.



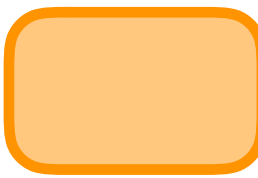
Wind Mitigation Level 1



Local conditions ameliorated in casual seating areas.

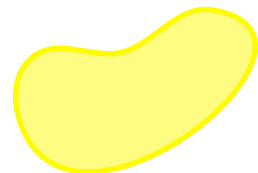
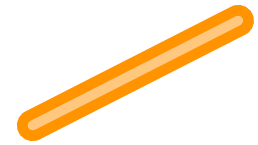



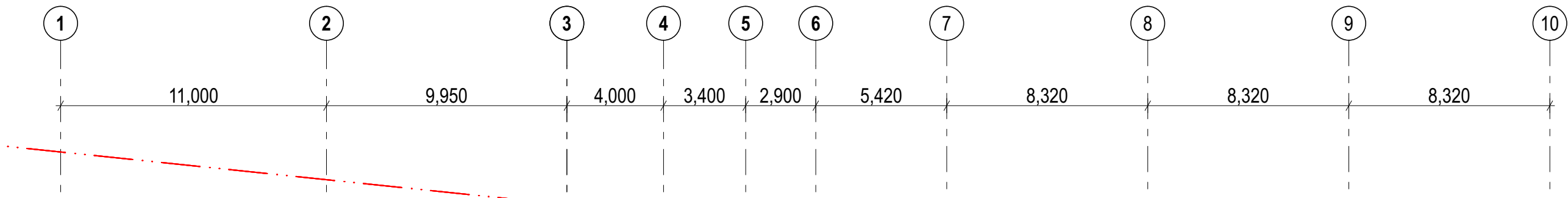
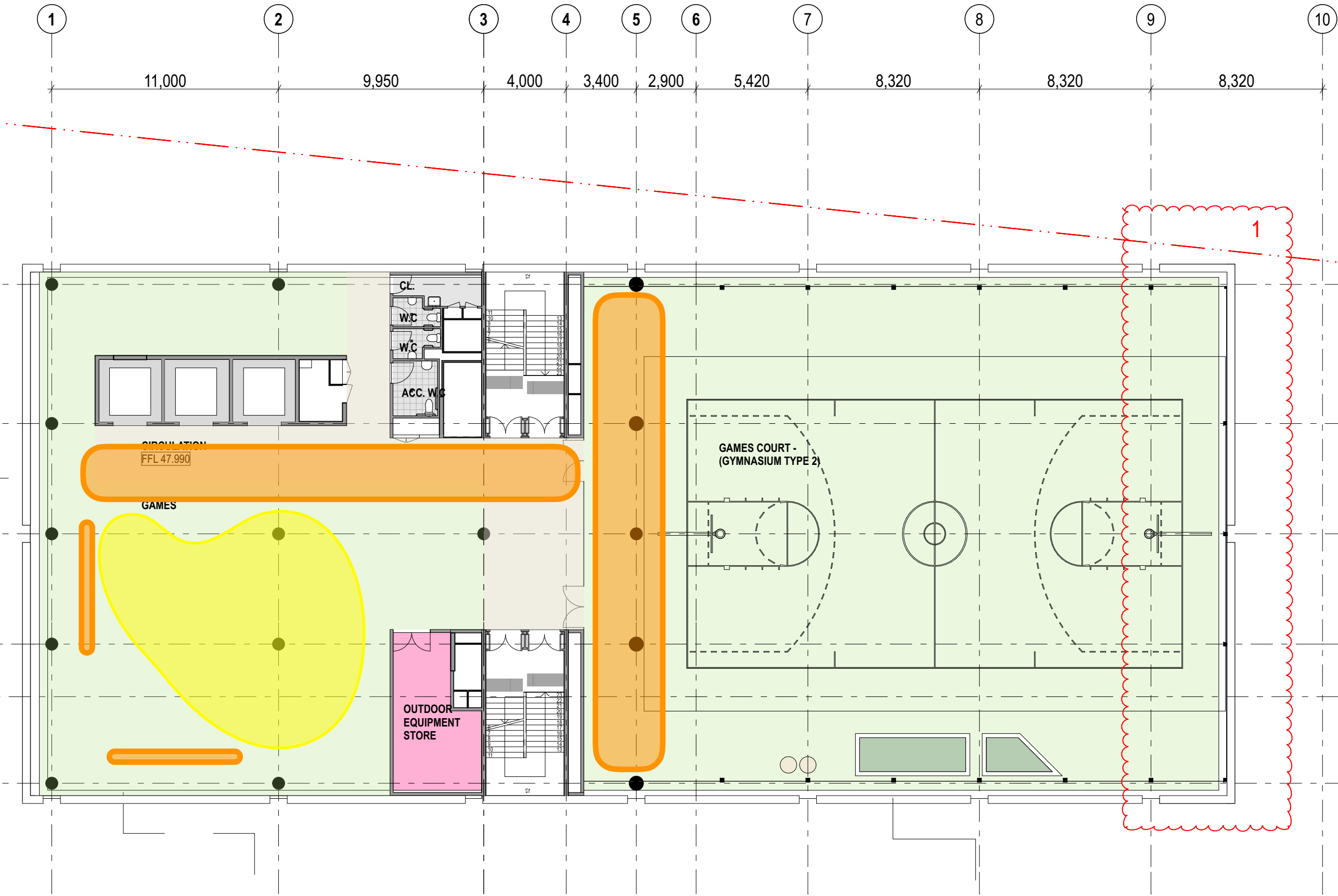
Signage blades providing localised calm areas



Transient zone therefore any potential increase in conditions here is acceptable.



-  Local conditions ameliorated in casual seating areas.
-  Signage blades providing localised calm areas
-  Transient zone therefore any potential increase in conditions here is acceptable.



 Potential signage blade to ameliorate conditions.

