

**AusGrid Services Plan
(Electrical Services)**

WARNING

AusGrid's plans show the location of assets at the time of installation and may not account for subsequent changes to road alignments, fences or buildings. The plans show no more than the presence or absence of Ausgrid assets in the street.

Persons working near electricity networks must exercise care and will be held responsible for any damage caused.

You must excavate by hand or use vacuum excavation to establish the location of Ausgrid underground cables and associated assets.

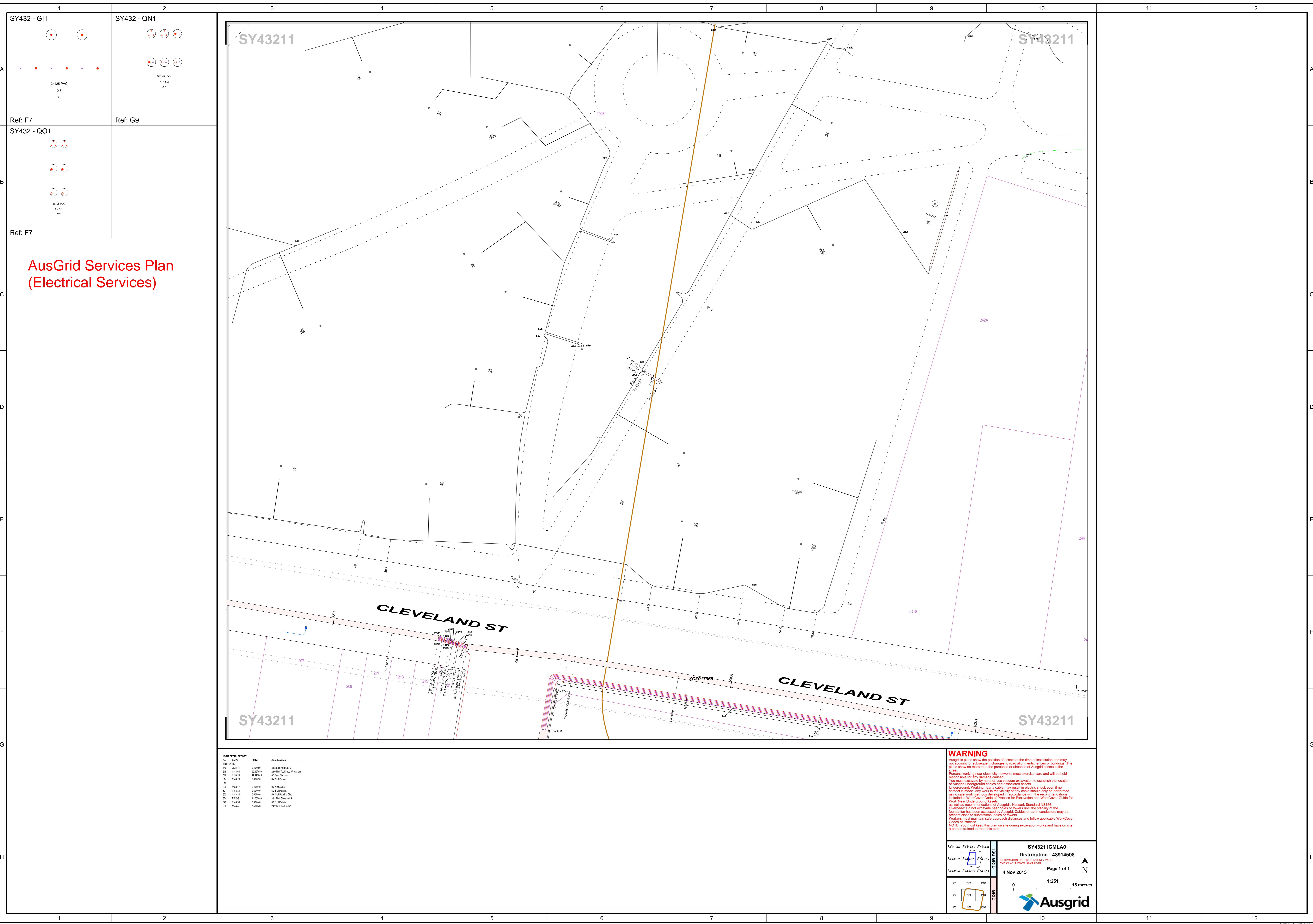
Underground Working near a cable may result in electric shock even if no contact is made. Any work in the vicinity of any cable should only be performed using safe work methods developed in accordance with the recommendations included in WorkCover Code of Practice for Excavation and WorkCover Guide for Work Near Underground Assets.

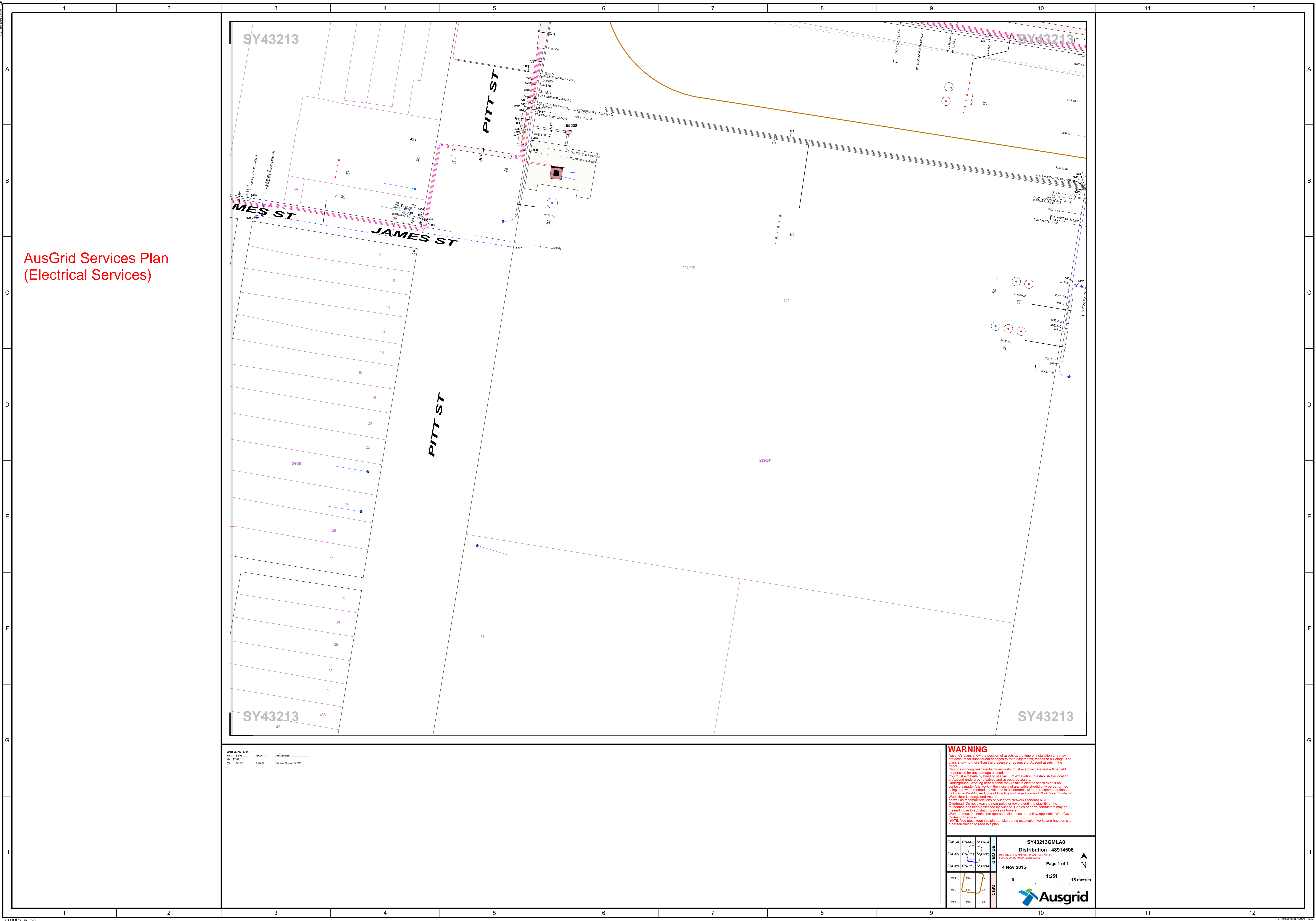
As well as recommendations of Ausgrid's Network Standard N2156, Caretaker: Do not excavate near poles or towers until the stability of the foundation has been assessed by Ausgrid. Cables or other conductors may be present close to substations, poles or towers.

Workers must maintain safe approach distances and follow applicable WorkCover Code of Practice.

NOTE: You must keep this plan on site during excavation works and have on site a person trained to read this plan.

SY41434GMLA0
Distribution - 48914508
Page 1 of 1
4 Nov 2015
1:251
15 metres
Ausgrid





AusGrid Services Plan
(Electrical Services)

JOINT DETAIL REPORT
No. 1002
Rev. 0001
Date 01/01/2015

PROJECT
Name
20.0 W of Chalmers St. WPL

WARNING
Ausgrid's plans show the position of assets at the time of installation and may not account for subsequent changes to road alignments, fences or buildings. The plans show no more than the presence or absence of Ausgrid assets in the area.
Persons working near electricity networks must exercise care and will be held responsible for any damage caused.
You must excavate by hand or use vacuum excavation to establish the location of Ausgrid underground cables and associated assets.
Underground Working near a cable may result in electric shock even if no contact is made. Any work in the vicinity of any cable should only be performed using safe work methods developed in accordance with the recommendations included in WorkCover Code of Practice for Excavation and WorkCover Guide for Work Near Underground Assets.
Overhead: Do not excavate near poles or towers until the stability of the foundation has been assessed by Ausgrid. Cables or earth conductors may be present close to substations, poles or towers.
Workers must maintain safe approach distances and follow applicable WorkCover Codes of Practice.
NOTE: You must keep this plan on site during excavation works and have on site a person trained to read this plan.

SY41344	SY41433	SY41434
SY41322	SY42211	SY42212
SY41324	SY43213	SY43214

SY43213GMLA0
Distribution - 48914508

4 Nov 2015

1:251

0 15 metres

Ausgrid

