

CROWS NEST THIRD-I

32 HUME STREET, NSW

DRAWING SCHEDULE

DRAWING NO.	DRAWING TITLE
000	COVER SHEET
400	PLANTING SCHEDULE
401	SOFTWORKS PLAN - LOWER GROUND
402	SOFTWORKS PLAN - GROUND LEVEL
403	SOFTWORKS PLAN - LEVEL 2
404	SOFTWORKS PLAN - LEVEL 2
405	SOFTWORKS PLAN - LEVEL 3
406	SOFTWORKS PLAN - LEVEL 3
407	SOFTWORKS PLAN - LEVEL 4
408	SOFTWORKS PLAN - LEVEL 11 AFH ROOF
409	SOFTWORKS PLAN - TOWER 1 ROOF
410	SOFTWORKS PLAN - TOWER 2 ROOF
601	SOFTWORKS DETAILS
700	LANDSCAPE SPECIFICATION NOTES

KEY PLAN

SCALE: NTS



Copyright remains the property of Arcadia Design Group Pty Ltd. Use only figured dimensions. Any other required dimensions are to be referred to and supplied by the landscape architect. All discrepancies to be referred to the project manager and Arcadia Design Group Pty Ltd prior to construction. Ensure compliance with the Building Code of Australia and all relevant Australian Standards and Authority requirements.

A	DA ISSUE	RG/AB	MB	27.02.25
Issue	Revision	Description	Drawn	Check Date

Not for Construction

Project

Crows Nest Site A
32 Hume Street NSW

Development Application

Client



Drawing No.	Drawing Name
L-000	Cover Sheet

Job No.	24-1023
Issue	A
Scale	

Sydney, Suite 70, Jones Bay
Wharf, 26-32 Pirrama Road,
Pyrmont NSW 2009
E sydney@arcadiala.com.au
T 02 8571 2900

ARCADIA

24-1023 CROWS NEST SITE A PLANTING SCHEDULE

CODE	BOTANIC NAME	COMMON NAME	MATURE SIZE (h x w) (m)	PROPOSED POT SIZE	DENSITY	AUSTRALIAN NATIVE SPECIES	GROUND LEVEL	LEVEL 002	LEVEL 003	LEVEL 004	LEVEL 011	ROOF
GROUND TREES												
Bam	Backhousia myrtifolia	Grey Myrtle	6 x 4	100L	AS SHOWN	Y	•	7	3	•	•	•
Bamy	Banksia marginata	Banksia Marginata	10 x 4	100L	AS SHOWN	Y	•	3	3	•	•	•
Cya	Cyathea australis	Rough Tree Fern	10 x 4	100L	AS SHOWN	Y	•	•	•	5	•	•
Gr "HG"	Grevillea 'Honey Gem'	Grevillea 'Honey Gem'	5 x 3	100L	AS SHOWN	Y	•	2	9	•	•	•
Trl "L"	Tristraniopsis laurina	Water Gum	12 x 6	100L	AS SHOWN	Y	•	•	•	•	2	•
INDOOR TREES												
Lia	Livistona australis	Cabbage Tree Palm	8 x 4	45L	AS SHOWN	Y	1	•	•	•	•	•
Ptm	Ptychpsperma marcarthurii	Macarthur Palm	8 x 3	45L	AS SHOWN	Y	2	•	•	•	•	•
SHRUBS & ACCENTS												
Anh "GV"	Anigozanthos 'Gold Velvet'	Kangaroo Paw	1 x 1	200mm	AS SHOWN	Y	•	49	17	•	13	32
Ba "BC"	Banksia 'Birthday Candles'	Banksia Birthday Candles	0.5 x 0.5	300mm	AS SHOWN	Y	•	55	24	•	18	16
Ca "LJ"	Callistemon 'Little John'	Little John	2 x 1.5	300mm	AS SHOWN	Y	•	54	42	15	17	29
Grj	Grevillea juniperina prostrata	Carpet Queen	0.2 x 1.5	140mm	AS SHOWN	Y	•	25	19	6	17	18
Gr "BR"	Grevillea 'Bronze Rambler'	Bronze Rambler	1 x 2.5	140mm	AS SHOWN	Y	•	•	8	•	•	•
Grs	Grevillea sericea	Pink Spider Flower	1 x 2.5	140mm	AS SHOWN	Y	•	•	11	12	•	5
Let	Leptospermum trinervium	Flaky Barked Tea Tree	4 x 3	300mm	AS SHOWN	Y	•	•	6	•	•	•
Phx	Philodendron xanadu	Philodendron	0.6 x 0.6	300mm	AS SHOWN	N	5	•	44	28	•	17
Rhe	Rhapis excelsa	Broadleaf Lady Palm	2 x 1.5	300mm	AS SHOWN	N	9	3	45	35	•	16
Stp	Strelitzia parvifolia	Bird of Paradise	3 x 2.5	300mm	AS SHOWN	N	6	22	29	28	•	9
GRASSES & RUSHES												
Di "CB"	Dianella 'Clarity Blue'	Dianella Clarity Blue	0.5 x 0.4	140mm	AS SHOWN	Y	•	•	•	45	•	•
Loc	Lomandra confertifolia	Little Con	0.6 x 0.6	140mm	AS SHOWN	Y	•	47	74	35	65	50
Liv	Lomandra longifolia 'Verday'	Lomandra longifolia Verday	0.5 x 0.5	140mm	AS SHOWN	Y	•	•	•	•	•	•
Pol	Poa labillardierei	Tussock Grass	1.2 x 0.5	200mm	AS SHOWN	Y	•	•	•	•	•	10
FERNS & CYCADS												
Asa	Asplenium australasicum	Birds Nest Fern	1.5 x 1.5	200mm	AS SHOWN	Y	•	32	20	•	6	8
Bln	Blechnum nudum	Fishbone Water Fern	1 x 1	200mm	AS SHOWN	Y	•	12	8	30	•	•
Doa	Doodia aspera	Prickly Rasp Fern	0.4 x 0.6	140mm	AS SHOWN	Y	•	27	36	15	•	•
Zaf	Zamia furfuracea	Cardboard Palm	1 x 1.5	300mm	AS SHOWN	N	•	19	13	23	•	15
GROUNDCOVERS & CLIMBERS												
Ca "CI"	Casuarina 'Cousin It'	Cousin It	0.5 x 1.5	200mm	6/sqm	Y	14	107	14	19	19	20
Cag	Carpobrous glaucescens	Pigface	0.2 x 1.5	200mm	6/sqm	Y	•	16	66	•	9	•
Di "SF"	Dichondra 'Silver Falls'	Silver Falls	0.1 x 2	140mm	6/sqm	N	14	107	14	19	19	20
Epm	Epacris microphylla	Coral Heath	0.5 x 2	140mm	6/sqm	Y	•	220	57	•	•	•
My "FL"	Myoporum 'Fine Leaf'	Myoporum Fine Leaf	0.4 x 2	140mm	6/sqm	Y	11	72	19	•	5	51
Myp	Myoporum parvifolium	Creeping Boobialla	0.3 x 2	200mm	6/sqm	Y	14	107	14	19	19	20
Vih	Viola hedaracea	Native Violet	0.3 x 0.3	200mm	6/sqm	Y	•	16	9	•	9	•
Wef "M"	Westringia fruticosa 'Mundi'	Mundi Westringia	0.4 x 1.5	200mm	6/sqm	Y	11	292	76	•	5	51

Copyright remains the property of Arcadia Design Group Pty Ltd. Use only figured dimensions. Any other required dimensions are to be referred to and supplied by the landscape architect. All discrepancies to be referred to the project manager and Arcadia Design Group Pty Ltd prior to construction. Ensure compliance with the Building Code of Australia and all relevant Australian Standards and Authority requirements.

A	DA ISSUE	RG/AB	MB	27.02.25
Issue	Revision Description	Drawn	Check	Date

Not for Construction

Project

Crows Nest Site A
32 Hume Street NSW

Development Application

Client



Drawing No.

L-401

Drawing Name

Softworks

Job No.

24-1023

Issue

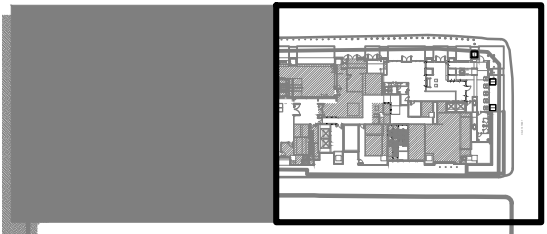
A

Scale

Sydney, Suite 70, Jones Bay
Wharf, 26-32 Pirrama Road,
Pyrmont NSW 2009
E sydney@arcadiala.com.au
T 02 8571 2900

ARCADIA

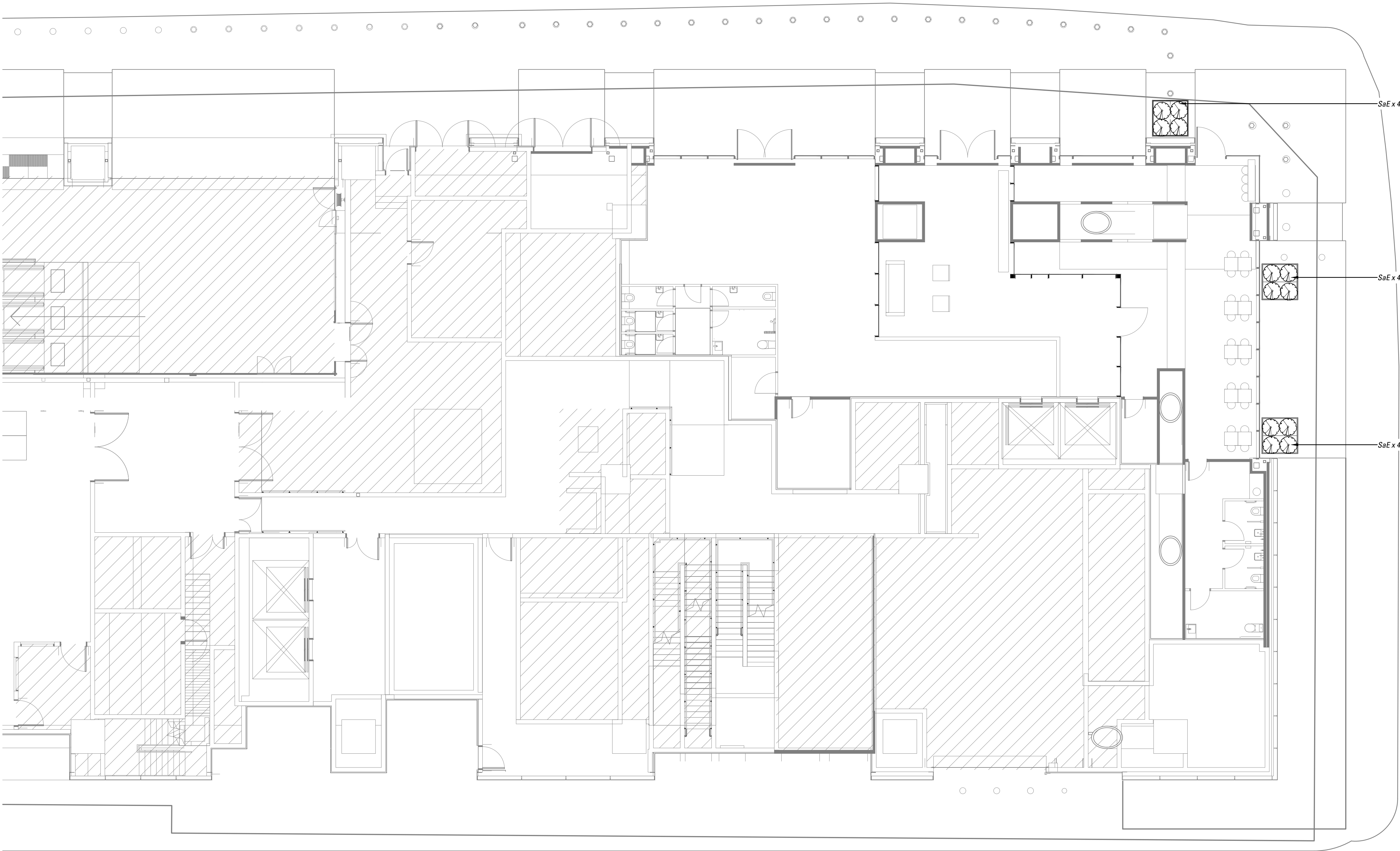
Key Plan:



Lower Ground Level

LEGEND

- PROPOSED FEATURE TREE PLANTING
- PROPOSED SHRUB AND ACCENT PLANTING
- PROPOSED GROUNDCOVER PLANTING



A	DA ISSUE	RG/AB	MB	27.02.25	
Issue	Revision	Description	Drawn	Check	Date

Not for Construction

Project

Crows Nest Site A
32 Hume Street NSW

Development Application

Client



Drawing No.
L-401

Drawing Name
Softworks
Lower Ground Level

Job No.

24-1023

Issue

A

Scale

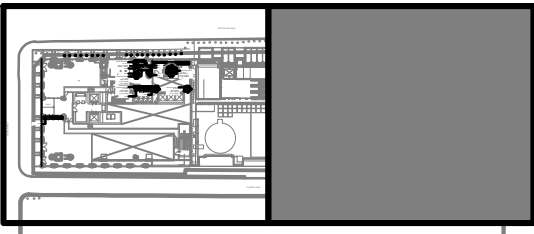
1:100 @ A1



Sydney, Suite 70, Jones Bay
Wharf, 26-32 Pirrama Road,
Pyrmont NSW 2009
E sydney@arcadiala.com.au
T 02 8571 2900

ARCADIA

Key Plan:



Ground Level

LEGEND

- PROPOSED FEATURE TREE PLANTING
- PROPOSED SHRUB AND ACCENT PLANTING
- PROPOSED GROUNDCOVER PLANTING

HUME STREET

PACIFIC HIGHWAY

CLARKE LANE

A	DA ISSUE	RG/AB	MB	27.02.25
Issue	Revision	Description	Drawn	Check Date

Not for Construction

Project

Crows Nest Site A
32 Hume Street NSW

Development Application

Client



Drawing No.
L-402

Drawing Name
Softworks Ground Floor

Job No.

24-1023

Issue

A

Scale

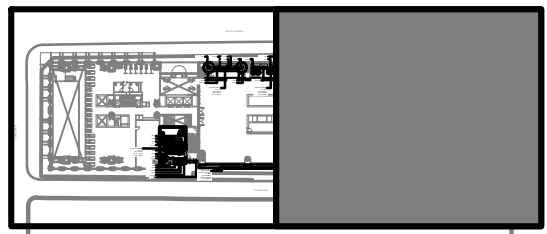
1:100 @ A1



Sydney, Suite 70, Jones Bay
Wharf, 26-32 Pirrama Road,
Pyrmont NSW 2009
E sydney@arcadiala.com.au
T 02 8571 2900

ARCADIA

Key Plan:



Level 02

LEGEND

- PROPOSED FEATURE TREE PLANTING
- PROPOSED SHRUB AND ACCENT PLANTING
- PROPOSED GROUNDCOVER PLANTING

HUME STREET

PACIFIC HIGHWAY

CLARKE LANE

Ground Cover Matrix 2
A = 0.5 m2
Myp x 1 (6/m2)
Di "SF" x 1 (6/m2)
Ca "CI" x 1 (6/m2)

Rooftop Shrub and
Groundcover - Matrix 5
A = 110 m2
Epm x 220 (6/m2)
Wet "M" x 220 (6/m2)
Cag x 220 (6/m2)

Ground Cover Matrix 2
A = 2.4 m2
Myp x 5 (6/m2)
Di "SF" x 5 (6/m2)
Ca "CI" x 5 (6/m2)

Ground Cover Matrix 2
A = 1.6 m2
Myp x 3 (6/m2)
Di "SF" x 3 (6/m2)
Ca "CI" x 3 (6/m2)

A	DA ISSUE	RG/AB	MB	27.02.25
Issue	Revision	Description	Drawn	Check Date

Not for Construction

Project

Crows Nest Site A
32 Hume Street NSW

Development Application

Client



Drawing No.

L-403

Drawing Name

Softworks Level 02

Job No.

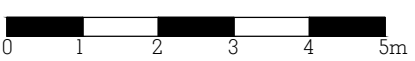
Issue

Scale

1:100 @ A1

24-1023

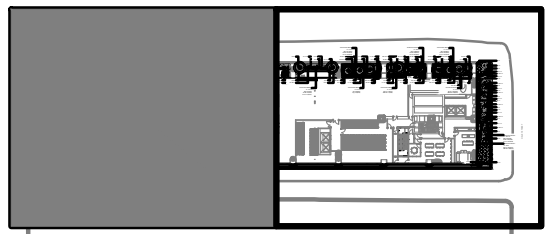
A



Sydney, Suite 70, Jones Bay
Wharf, 26-32 Pirrama Road,
Pyrmont NSW 2009
E sydney@arcadiala.com.au
T 02 8571 2900

ARCADIA

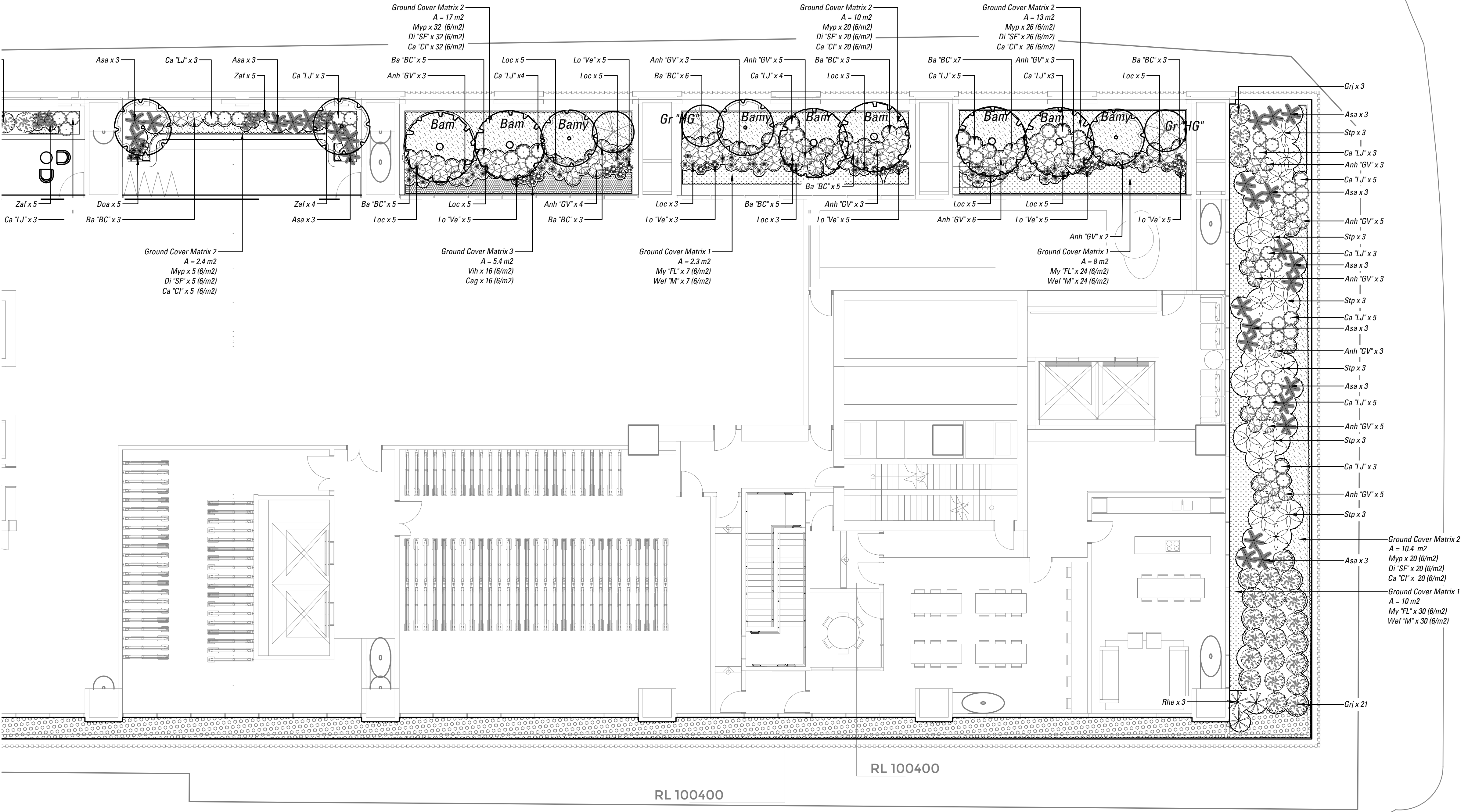
Key Plan:



Level 02

LEGEND

- PROPOSED FEATURE TREE PLANTING
- PROPOSED SHRUB AND ACCENT PLANTING
- PROPOSED GROUNDCOVER PLANTING



A	DA ISSUE	RG/AB	MB	27.02.25
Issue	Revision Description	Drawn	Check	Date

Not for Construction

Project

Crows Nest Site A
32 Hume Street NSW

Development Application

Client



Drawing No.

L-404

Drawing Name

Softworks Level 02

Job No.

Issue

Scale

1:100 @ A1

24-1023

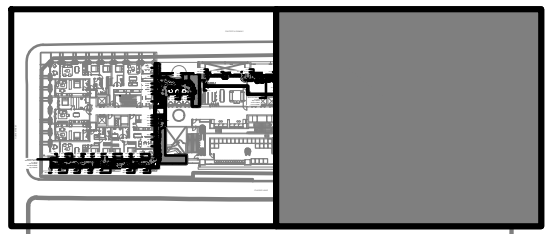
A



Sydney, Suite 70, Jones Bay
Wharf, 26-32 Pirrama Road,
Pyrmont NSW 2009
E sydney@arcadiala.com.au
T 02 8571 2900

ARCADIA

Key Plan:



Level 03

LEGEND

- PROPOSED FEATURE TREE PLANTING
- PROPOSED SHRUB AND ACCENT PLANTING
- PROPOSED GROUNDCOVER PLANTING

HUME STREET

PACIFIC HIGHWAY

CLARKE LANE

Rooftop Shrub and
Groundcover - Matrix 5
A = 13.8 m2
Epm x 27 (6/m2)
Wef 'M' x 27 (6/m2)
Cag x 27 (6/m2)

Ground Cover Matrix 2
A = 2.6 m2
Myp x 5 (6/m2)
Di 'SF' x 5 (6/m2)
Ca 'CI' x 5 (6/m2)

A	DA ISSUE	RG/AB	MB	27.02.25
Issue	Revision Description	Drawn	Check	Date

Not for Construction

Project

Crows Nest Site A
32 Hume Street NSW

Development Application

Client



Drawing No.

L-405

Drawing Name

Softworks Level 03

Job No.

Issue

Scale

1:100 @ A1

24-1023

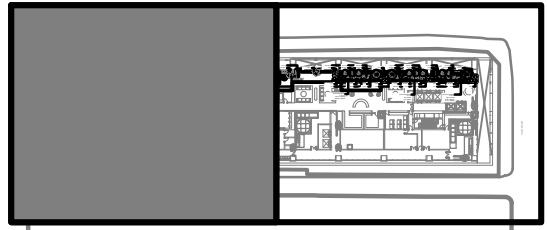
A



Sydney, Suite 70, Jones Bay
Wharf, 26-32 Pirrama Road,
Pyrmont NSW 2009
E sydney@arcadiala.com.au
T 02 8571 2900

ARCADIA

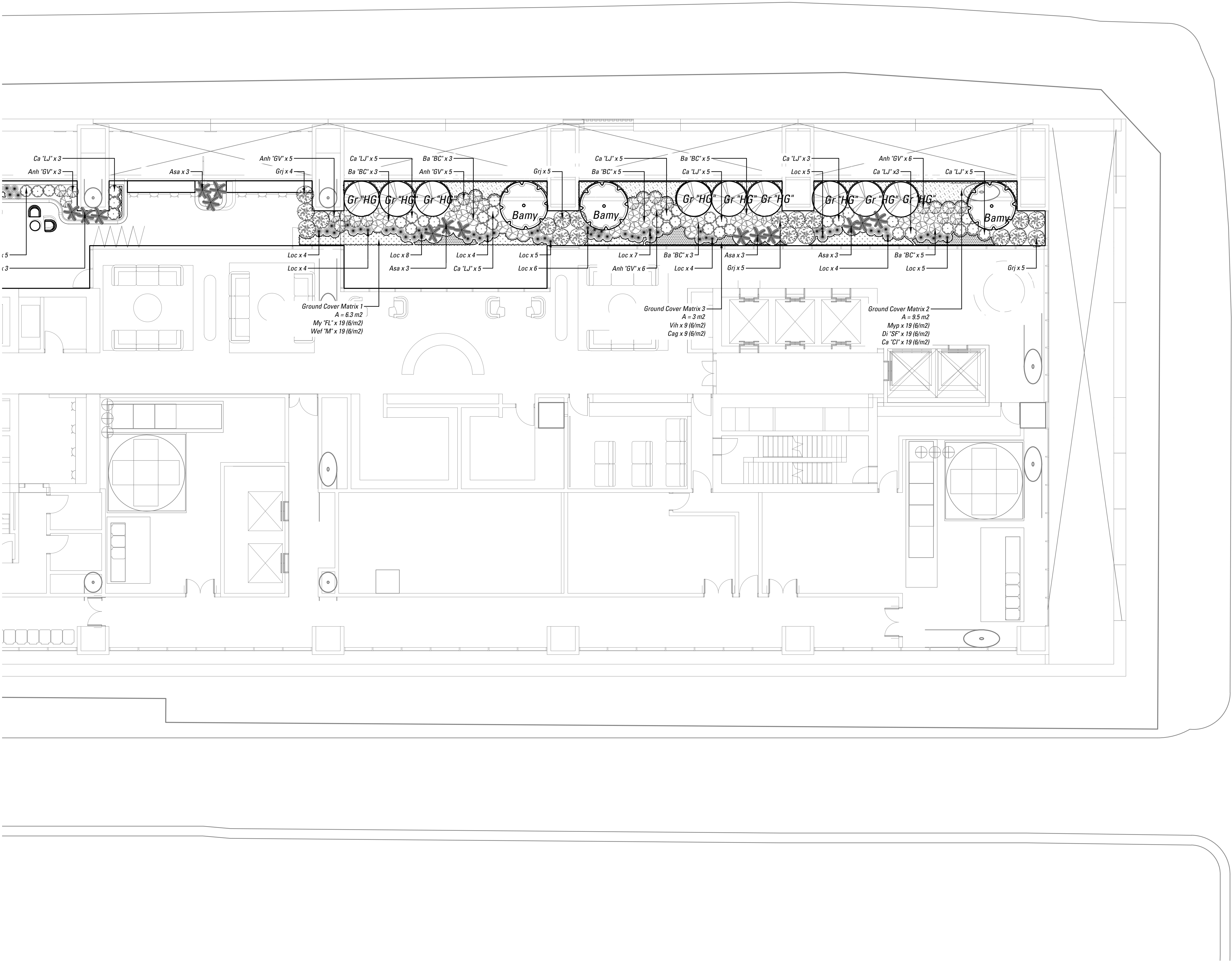
Key Plan:



Level 03

LEGEND

- PROPOSED FEATURE TREE PLANTING
- PROPOSED SHRUB AND ACCENT PLANTING
- PROPOSED GROUND COVER PLANTING



A	DA ISSUE	RG/AB	MB	27.02.25
Issue	Revision	Description	Drawn	Check Date

Not for Construction

Project

Crows Nest Site A
32 Hume Street NSW

Development Application

Client



Drawing No. L-406
Drawing Name Softworks Level 03

Job No. 24-1023
Issue A
Scale 1:100 @ A1

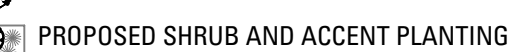


Sydney, Suite 70, Jones Bay
Wharf, 26-32 Pirrama Road,
Pyrmont NSW 2009
E sydney@arcadiala.com.au
T 02 8571 2900

ARCADIA



LEGEND



Not for Construction

Project

Crows Nest Site A

32 Hume Street NSW

Development Application

Client



Drawing Name
Softworks Level 04

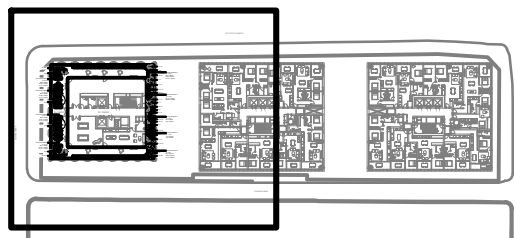
24-1023
A

A

Sydney, Suite 70, Jones Bay Wharf, 26-32 Pirrama Road, Pyrmont NSW 2009
E sydney@arcadiala.com.au
T 02 8571 2900

ARCADIA

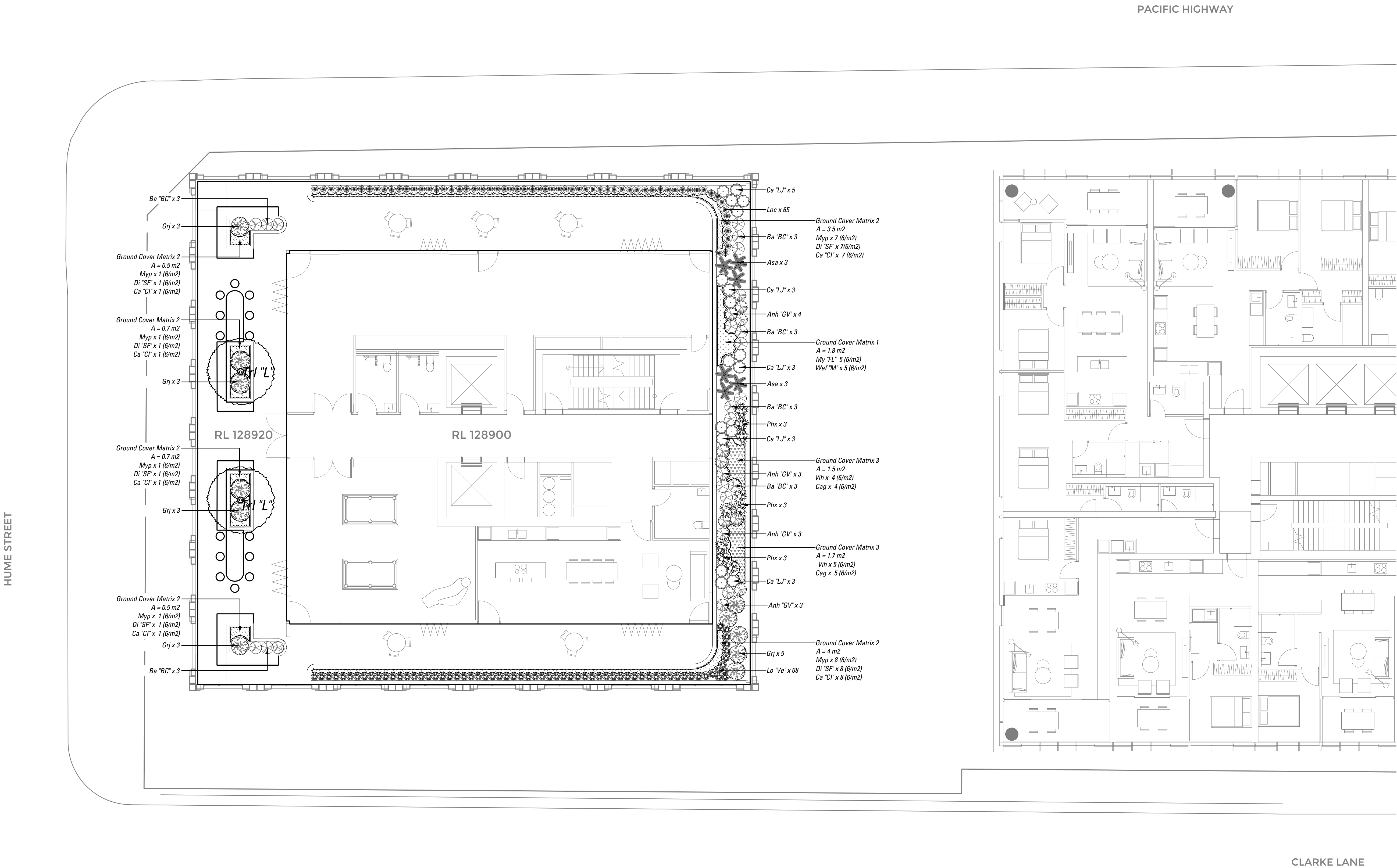
Key Plan:



Tower 3 Rooftop

LEGEND

- PROPOSED FEATURE TREE PLANTING
- PROPOSED SHRUB AND ACCENT PLANTING
- PROPOSED GROUND COVER PLANTING



A	DA ISSUE	RG/AB	MB	27.02.25
Issue	Revision	Description	Drawn	Check Date

Not for Construction

Project

Crows Nest Site A

32 Hume Street NSW

Development Application

Client



Drawing No.
L-408

Drawing Name
Softworks Tower 3 Rooftop

Job No.

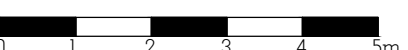
24-1023

Issue

A

Scale

1:100 @ A1

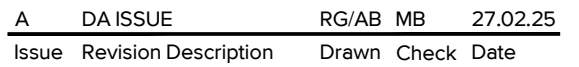


Sydney, Suite 70, Jones Bay
Wharf, 26-32 Pirrama Road,
Pyrmont NSW 2009
E sydney@arcadiala.com.au
T 02 8571 2900

ARCADIA



LEGEND



Not for Construction

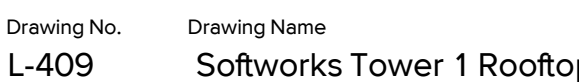
Project

Crows Nest Site A

32 Hume Street NSW

Development Application

Client



Job No. _____

Issue

Scale

1:100 @ A1

24-1023

A



Sydney. Suite 70, Jones Bay Wharf, 26-32 Pirrama Road, Pyrmont NSW 2009
E sydney@arcadiala.com.au
T 02 8571 2900

ARCADIA

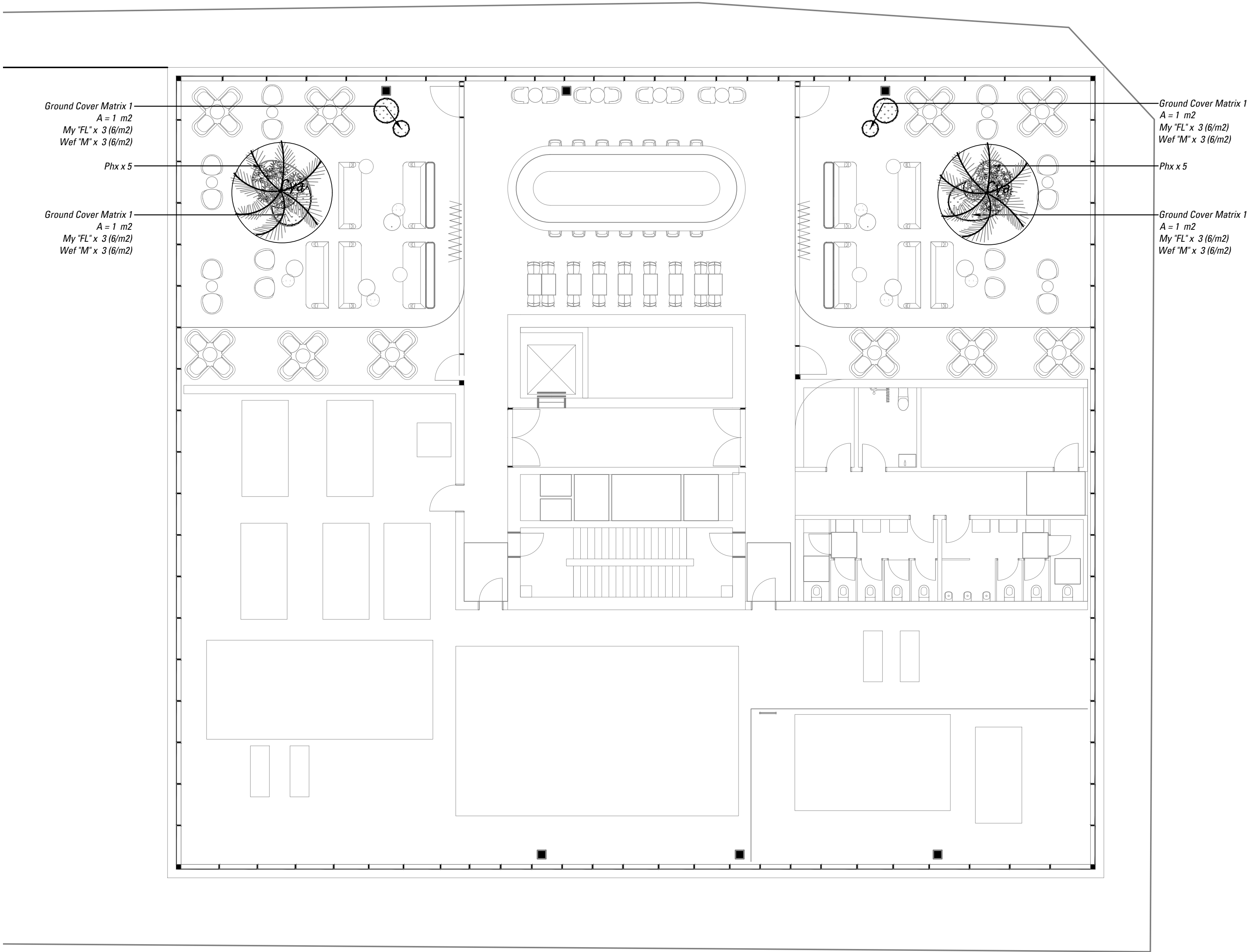
Key Plan:



Rooftop Tower 03

LEGEND

- PROPOSED FEATURE TREE PLANTING
- PROPOSED SHRUB AND ACCENT PLANTING
- PROPOSED GROUNDCOVER PLANTING



A	DA ISSUE	RG/AB	MB	27.02.25
Issue	Revision	Description	Drawn	Check Date

Not for Construction

Project

Crows Nest Site A

32 Hume Street NSW

Development Application

Client



Drawing No.	Drawing Name
L-410	Softworks Tower 2 Rooftop

Job No.	24-1023	
Issue	A	
Scale	1:100 @ A1	

Sydney, Suite 70, Jones Bay
Wharf, 26-32 Pirrama Road,
Pyrmont NSW 2009
E sydney@arcadiala.com.au
T 02 8571 2900

ARCADIA