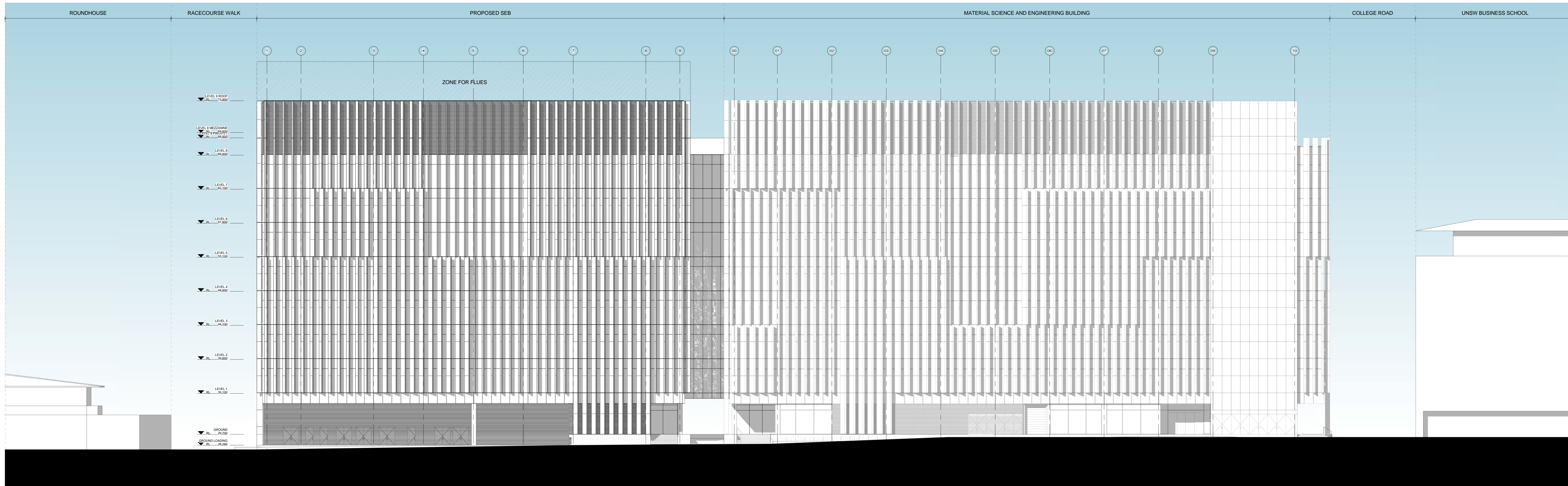
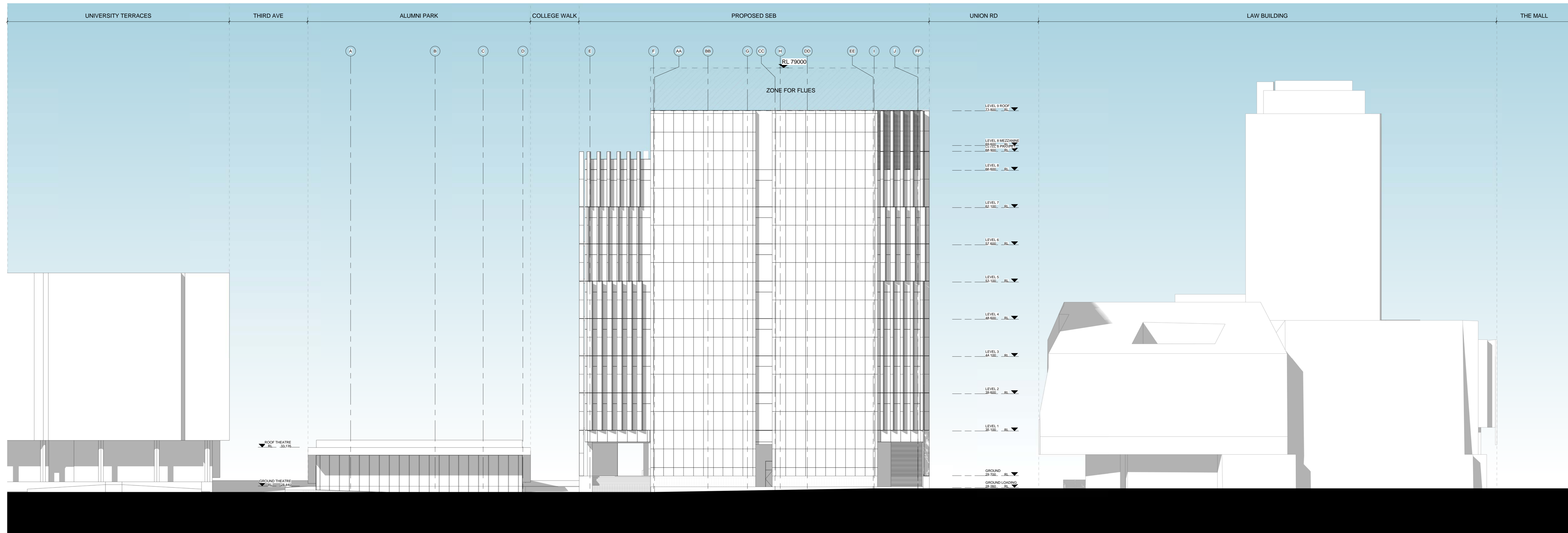


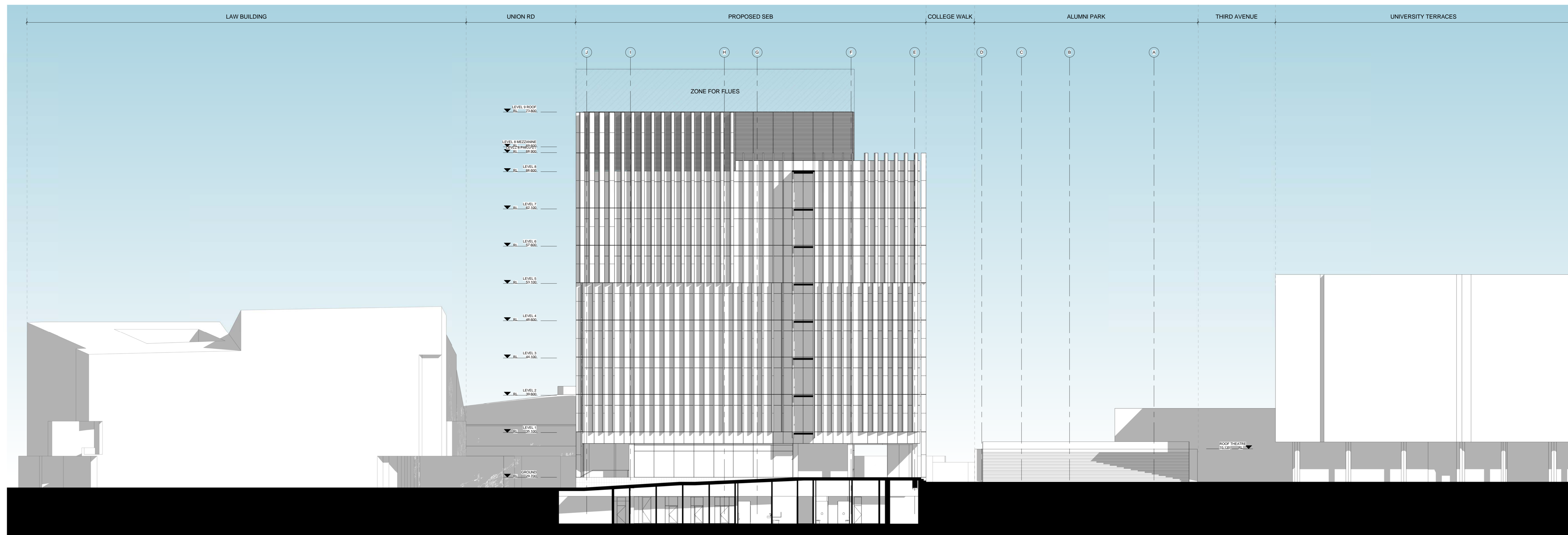
NORTH STREETScape ELEVATION
 2001-SSD SCALE: 1:200



SOUTH STREETScape ELEVATION
 2001-SSD SCALE: 1:200

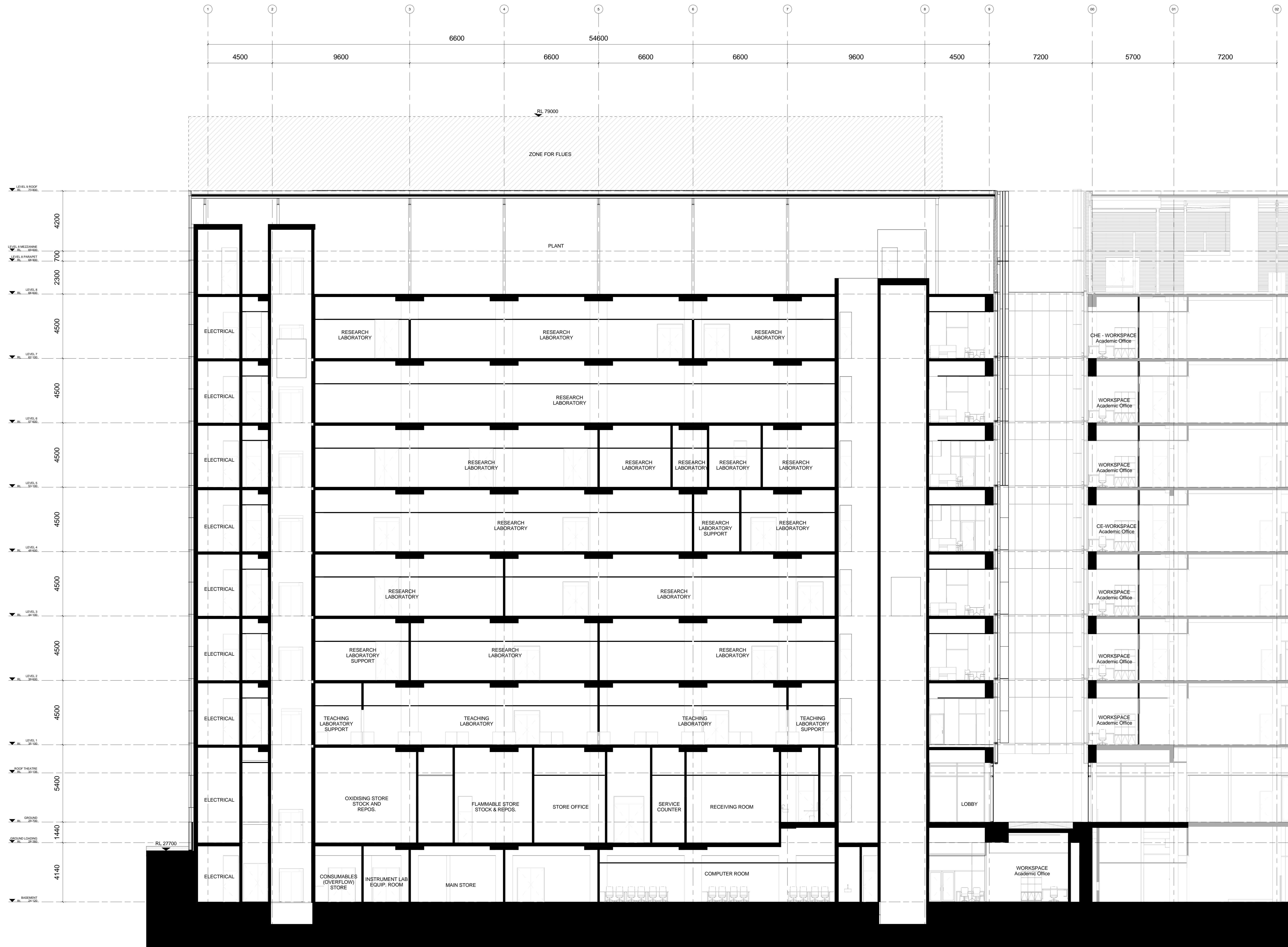


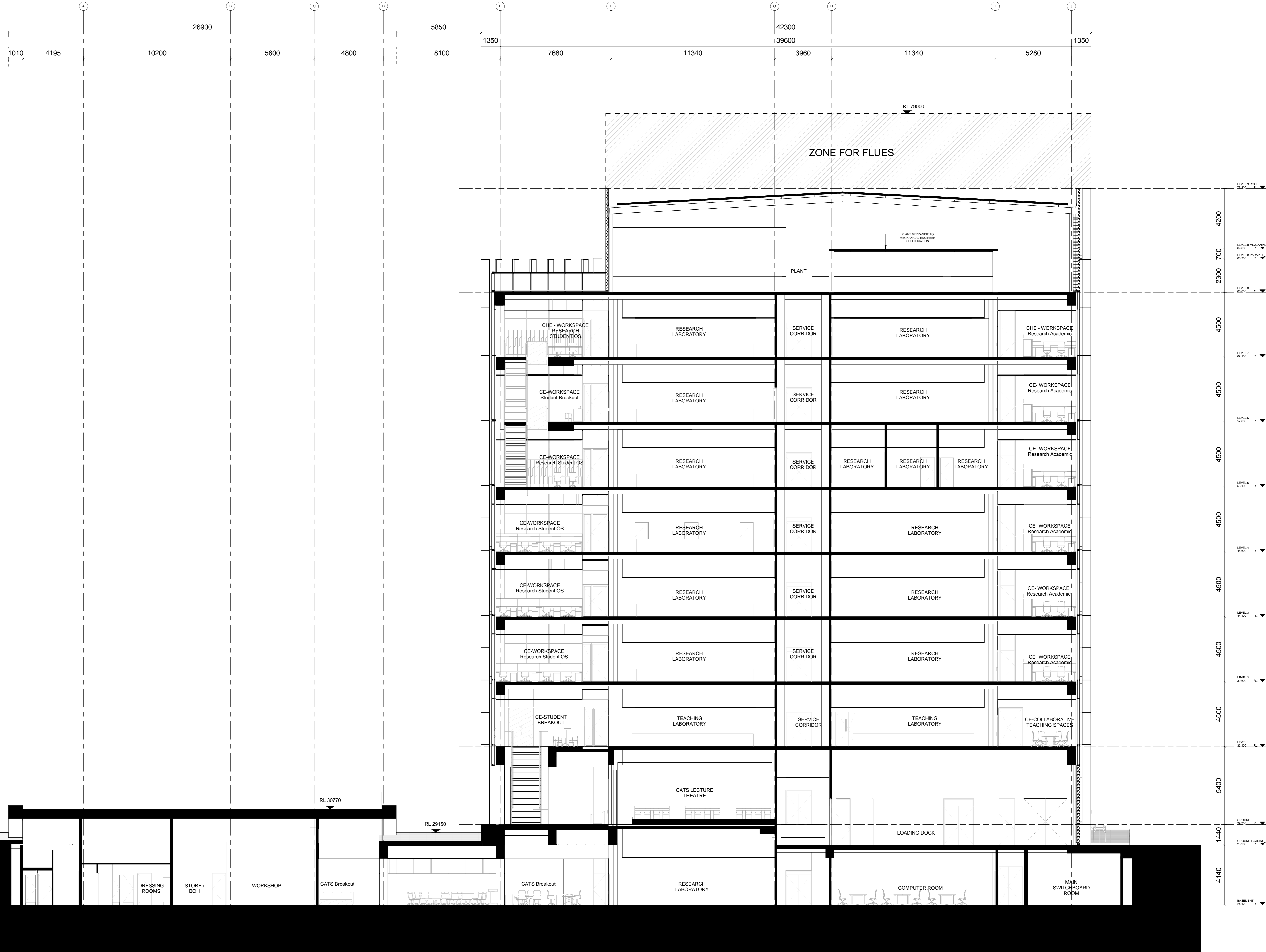
WEST STREETSCAPE ELEVATION
 A06
 2002-SSD SCALE: 1 : 200

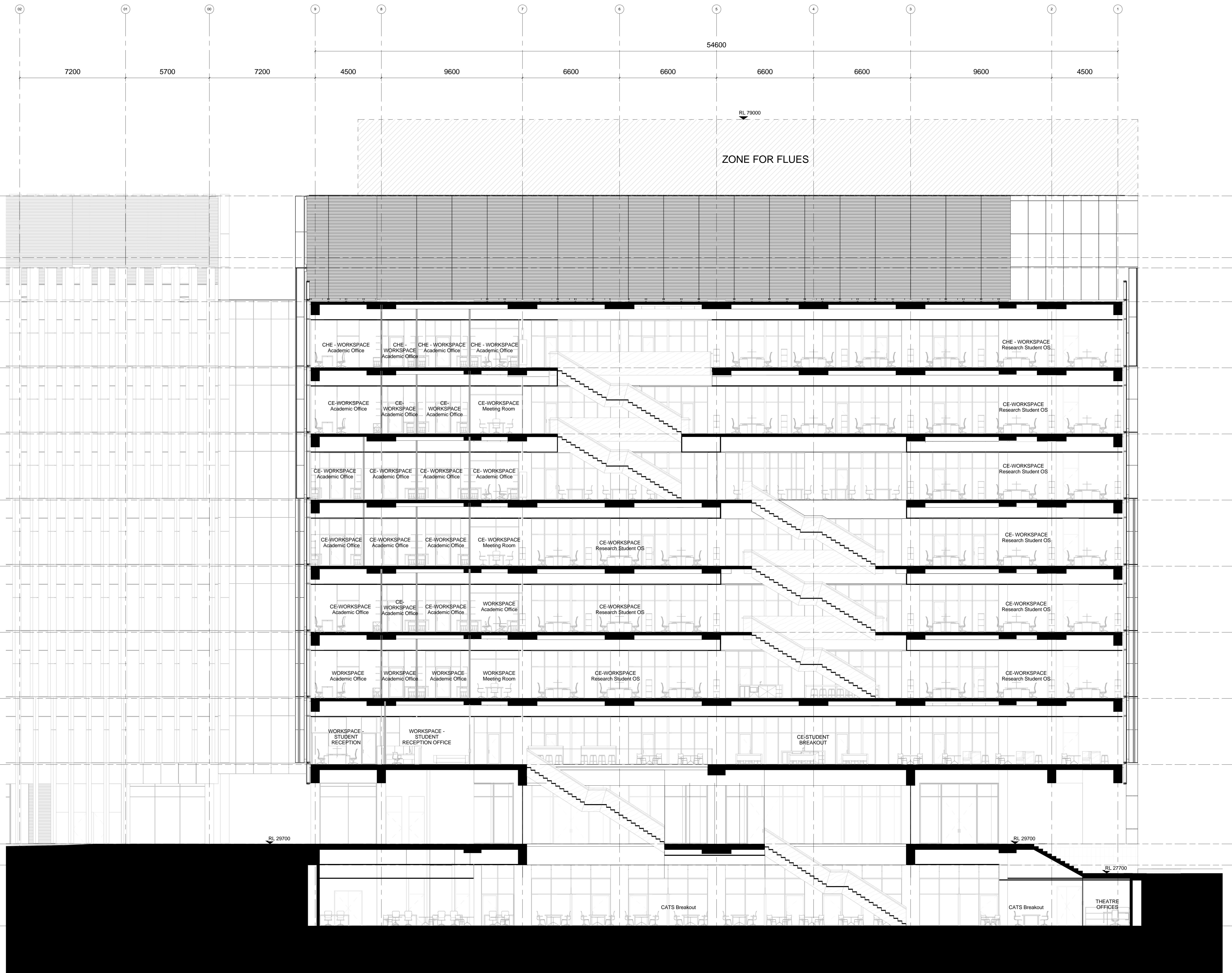


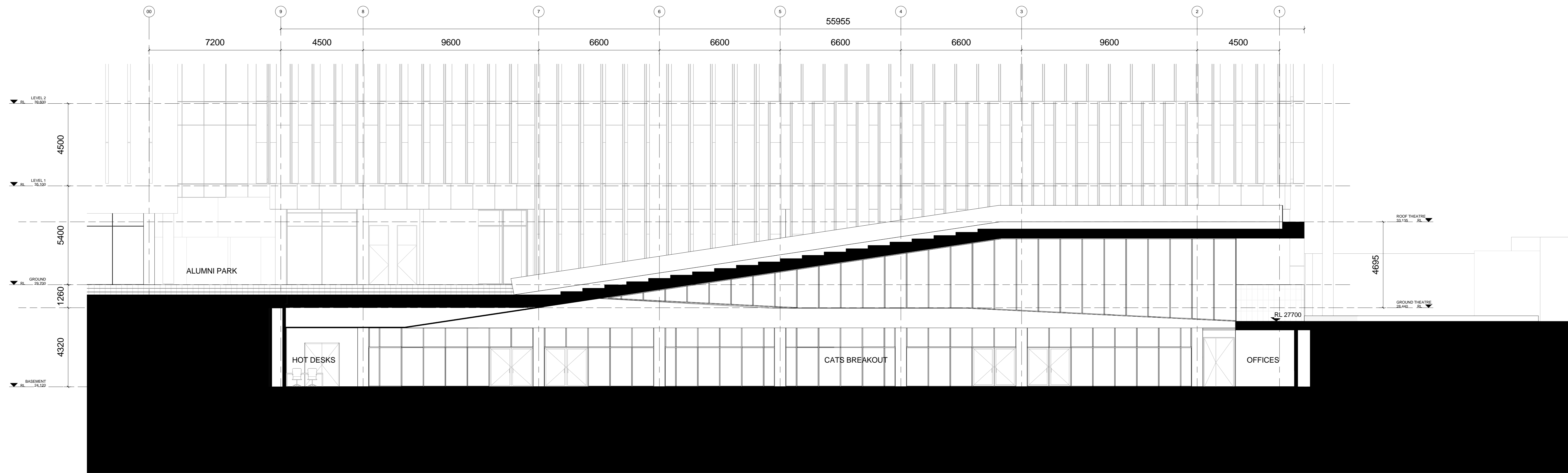
EAST STREETSCAPE ELEVATION
 A06
 2002-SSD SCALE: 1 : 200

2020/08/14 11:11 PM C:\p1\1000_03\MAIN_SSD\FINAL_03\0202-SSD_PlanSet\0202-04

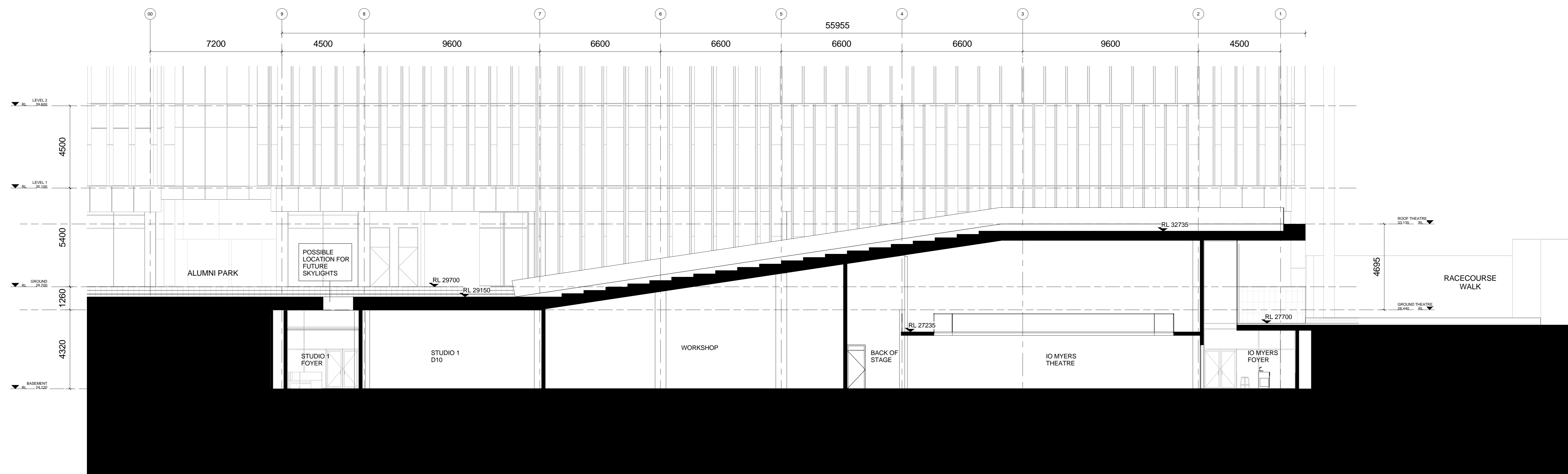








SECTION 4
1004-SSD SCALE : 1 : 100



SECTION 5
1004-SSD SCALE : 1 : 100

GRIMSHAW

RICE DAUBNEY

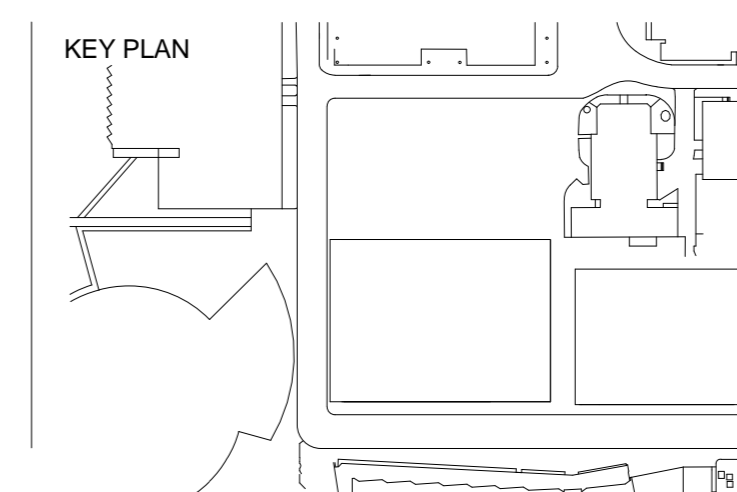
GRIMSHAW Architects
Telephone +61 (02) 9253 0200
Address Level 3, 24 Hickson Rd
Wahai Bay
Sydney NSW 2000
Australia
www.grimshaw-architects.com

INTELLECTUAL PROPERTY
© Copyright Grimshaw Architects Pty Limited
Unauthorised reproduction or use of any part of this document is prohibited without the prior written consent of Grimshaw Architects Pty Limited. This document and its contents are the property of Grimshaw Architects Pty Limited and are not to be distributed, copied, or otherwise used without the prior written consent of Grimshaw Architects Pty Limited. Grimshaw Architects Pty Limited and its related entities accept no liability for any loss or damage arising from the use of this document.

REV	DESCRIPTION	DATE
1	State Significant Development Planning Application	22.01.16

CLIENT
UNSW
THE UNIVERSITY OF NEW SOUTH WALES

NOTES
1. Detailed information shown on Architectural Drawings is indicative. For full distribution of structural design refer to the Structural Design Drawings.



DRAWING KEY

PROJECT
SCIENCE AND ENGINEERING BUILDING
ADDRESS
UNSW
GRIMSHAW PROJECT NO.
15083

PROJECT NORTH TRUE NORTH
SCALE
1 : 100 @ A0
STATUS
FOR APPROVAL

DRAWING
SECTION 04
DRAWN
CM
CHECKED
CF
AUTHORISED
MJ
DRAWING NUMBER
A07 1004-SSD
REVISION
1