

Adam O'Connor
Senior Planner
Social & Other Infrastructure Assessments
NSW Department of Planning & Environment
320 Pitt Street
Sydney NSW 2001

Dear Adam,

**NEW ULTIMO PYRMONT PUBLIC SCHOOL – SSD DA
JONES STREET – DROP-OFF BAY AND BUS BAY DESIGN**

RobertsDay
planning.design.place

Further, to our recent discussion on this matter, please see below information to assist in the conclusion of your assessment.

You have sought information regarding the proposed design and intended operation of the Jones Street drop-off bay and bus bay. The following figures prepared by ARUP articulate that of the full 55m extent of the school site frontage, 25m (commencing at the intersection with Quarry Street) is to be converted from a part of the existing bus bay to a drop-off / pick-up bay for use during the AM and PM peak times shown in the figure. The bay will otherwise be retained as a 2P parking zone during other times.

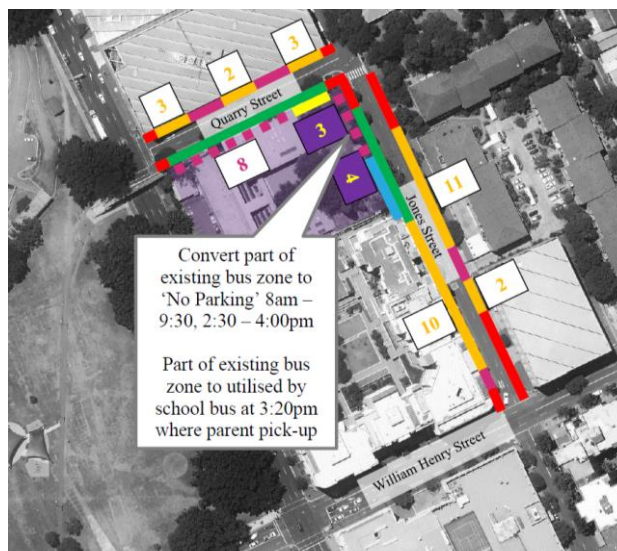
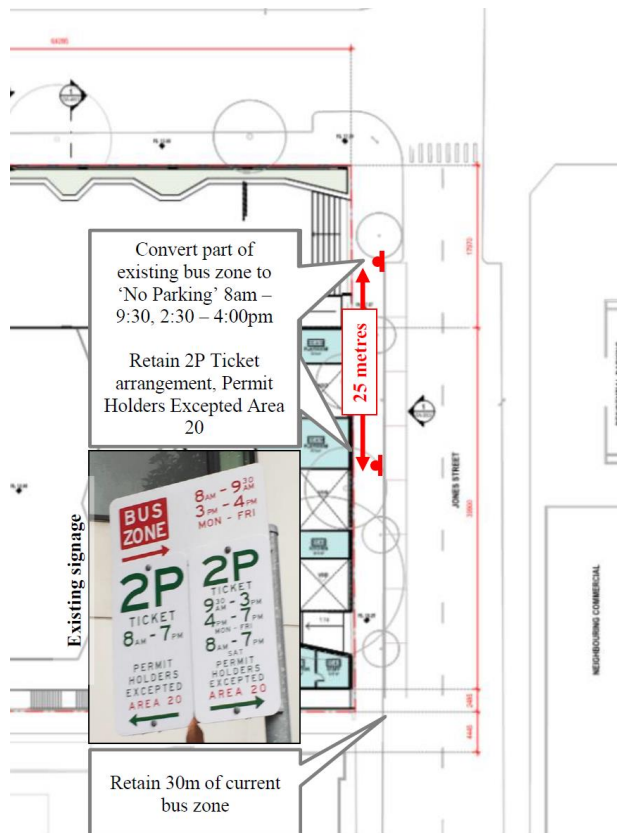
The remaining 30m will be retained as a bus bay, noting that the only school bus servicing the school arrives /departs at 3:20pm on school days. The retained 30m provides ample capacity for this single daily bus trip.

ARUP has provided further commentary as follows:

Provision for additional drop-off bays can be accommodated by a 25m length on Jones Street, along the school frontage. This will require converting part of the existing bus zone (which has been observed to currently serve only a limited number of school buses), to a "No Parking 8:00am to 9:30am, 2:30 – 3:30pm" restriction as shown in the Figures. The remaining 30m would be retained for bus usage consistent with the Response to Agency Submissions.

Accessible set down would be provided within the school off Wattle Street. No accessible spaces would be allocated along Jones Street.

The amount of bus services using the area does not match the demand which could be fulfilled by allowing parents to drop-off and pick up in these periods. Observed bus services were arriving after 3:20pm. Altering the restrictions to match these arrivals can assist in maximising the efficiency of this space.



- 1/4P 8am – 9:30am, 2:30pm – 3:30pm
- No Parking 8am – 9:30am, 2:30pm – 4:00pm
- 2P, Ticket 9:30am – 3pm, 4pm – 7pm, Mon to Fri, Permit holders excepted, Area 20
- 2P, Ticket 8am – 7pm, Sat, Permit holders excepted Area 20
- 2P Ticket 8am – 7pm, Permit holders excepted Area 20
- 4P Ticket 8am – 7pm, Permit holders excepted Area 20
- Bus Zone, 8am – 9:30am, 3pm – 4pm, Mon to Fri
- No Parking, No Stopping

We look forward to the prompt resolution of your assessment.

Should you have any further queries, please don't hesitate to contact me on 0437 259 581.

Yours sincerely

A handwritten signature in black ink, appearing to read 'O Klein', with a stylized, cursive script.

Oliver Klein
Senior Associate
RobertsDay

RobertsDay
planning.design.place