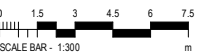
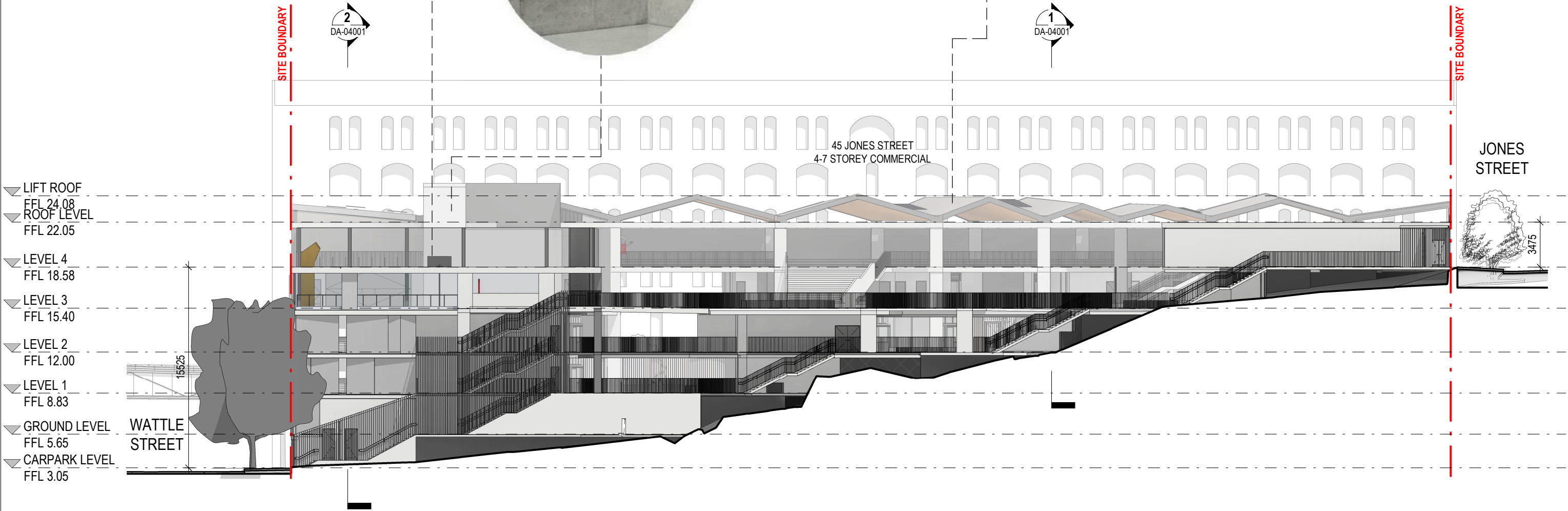
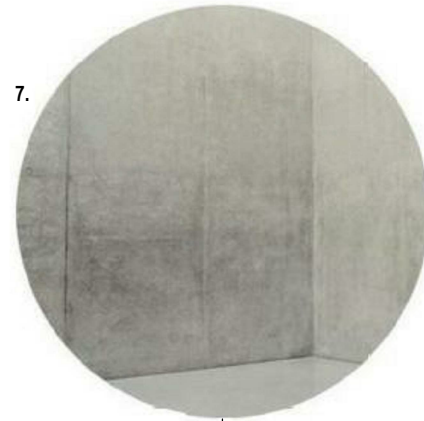
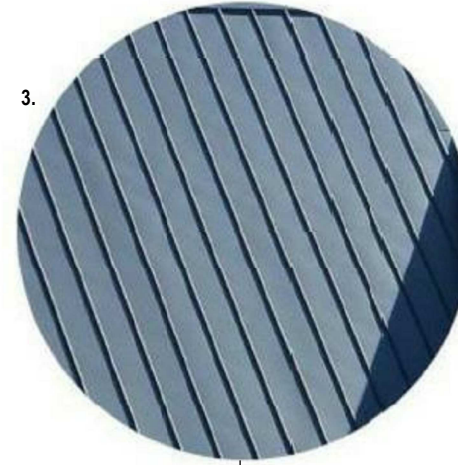


MATERIAL LEGEND:

1. ALUMINUM BATTEN
2. SHALE GREY "LONGLINE" STEEL WALL CLADDING
3. METAL DECK ROOF
4. STAINLESS STEEL NETTING
5. ANODISED ALUMINIUM WINDOWS WITH SOLID PANELS
6. PRECAST CONCRETE PANEL
7. IN-SITU CONCRETE



© Copyright Designinc Sydney Pty Limited
 This drawing is protected by copyright. All rights are reserved. Unless permitted under the Copyright Act 1968, no part of this drawing may in any form or by any means be reproduced, published, broadcast or transmitted without the prior written permission of the copyright owner.
Please note
 If the Status of this drawing is not signed off For Construction it may be subject to change, alteration or amendment at the discretion of Designinc Sydney Pty Limited. If no Designinc Sydney Pty Limited is not liable for any loss, damage, harm or injury whether special, consequential, direct or indirect, suffered by you or any other person as a result of your use of this drawing for construction purposes.
 Figured dimensions take preference to scale readings. Verify all dimensions on site.
 Report any discrepancies to the Architect for decision before proceeding with the work.
 Nominated Architects
 Anthony Quen 5421 | Sandeep Arora 7337 | Ian Armstrong 7260 | Richard Does 8126

No	DATE	REVISIONS	BY
A	12/03/2018	DRAFT FOR REVIEW	HC
B	19/03/2018	FOR INFORMATION	HC
C	19/03/2018	FOR DA APPROVAL	HC

ARCHITECT
DesignInc|Lacoste+Stevenson|bmc2
 architects in association

CLIENT
SCHOOL INFRASTRUCTURE NSW

PROJECT
NEW ULTIMO PYRMONT PUBLIC SCHOOL
 Corner Quarry and Jones Streets
 Ultimo NSW 2007

TITLE
SOUTH ELEVATION
 BUILDING ELEVATIONS

DRAWN BY
 TB,HC,NT,RK,FA
 SCALES
 1:300 @ A3
 PLOT DATE
 03/02/18
 PROJECT NO.
 P16-077
 DRAWING NO.
 DA-03002
 DRAWING STATUS
 FOR INFORMATION
 REVIEWED BY
 JCU
 SIGNATURE
 DATE

REVISION
 C
 DEVELOPMENT APPLICATION

QUALITY CERTIFIED
 ISO 9001
 Completion of the Drawing Status is evidence the design has been verified as conforming to the requirements of the Project M.S. Plan. Initiating the "Drawn By" box confirms that this drawing has been prepared in conformity with Designinc Sydney M.S. procedures.