

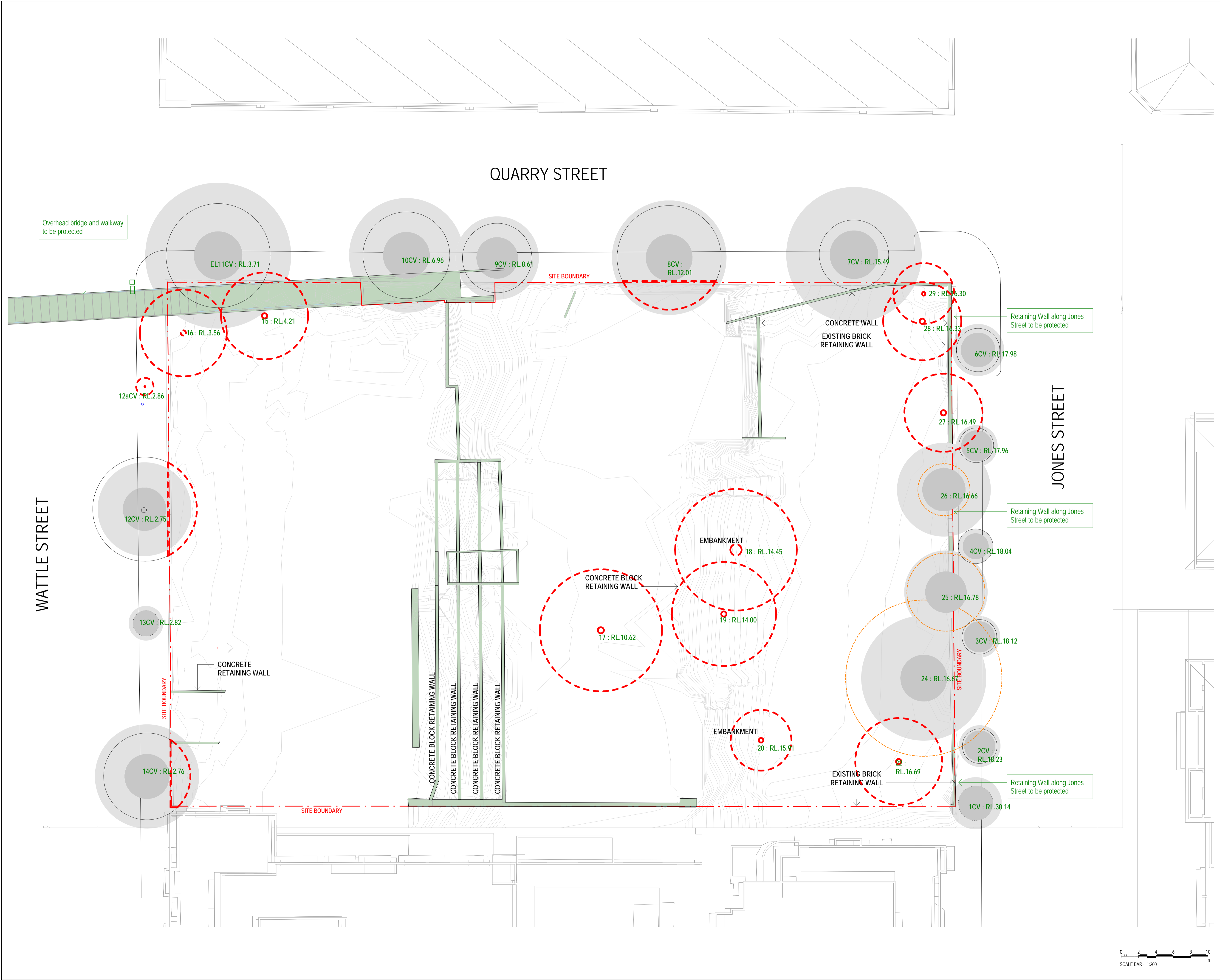
Copyright Designinc Sydney Pty Limited
 This drawing is protected by copyright. All rights are reserved. Unless permitted under the Copyright Act 1968, no part of this drawing may in any form or by any means be reproduced, published, broadcast or transmitted without the prior written permission of the copyright owner.

Please note
 If the Status of this drawing is not signed off For Construction it may be subject to change, alteration or amendment at the discretion of Designinc Sydney Pty Limited. If so, Designinc Sydney Pty Limited is not liable for any loss, damage, harm or injury whether special, consequential, direct or indirect, suffered by you or any other person as a result of your use of this drawing for construction purposes.

Figured dimensions take preference to scale readings. Verify all dimensions on site. Report any discrepancies to the Architect for decision before proceeding with the work.

FORWARDED ARCHITECTS:
 Chisham Coulson 4669 Anthony Quan 5421 Sandeep Anil 7337

No	DATE	REVISIONS	BY
A	10.10.17	ALPHANUMERICAL REVISION FOR SSD DA	TB
B	20.10.17	ISSUE FOR SSD DA	TB



- RETAINING WALL TO REMAIN TO ENSURE SITE STABILITY
- TREE RETAINED TO BE PROTECTED IN ACCORDANCE WITH ARBORIST REQUIREMENTS + REPORT
- TREE PROTECTION ZONE
- STRUCTURAL ROOT ZONE
- TREES TO BE APPROVED BY SSD DA FOR REMOVAL DURING CONSTRUCTION OF NEW SCHOOL
- TREES TO BE APPROVED BY SSD DA FOR PRUNING DURING CONSTRUCTION OF NEW SCHOOL
- TREE MAY REQUIRE REMOVAL TO BE APPROVED FOR REMOVAL BY SSD DA. TREE TO BE PROTECTED DURING DEMOLITION. ARBORIST TO INSPECT DURING CONSTRUCTION TO CONFIRM.
- CV** COUNCIL VERGE TREE

ARCHITECTS IN ASSOCIATION
Designinc | Lacoste + Stevenson | bmc2
 Designinc Sydney PTY LIMITED ACN 003008820
 L12 / 77 PACIFIC HWY NORTH SYDNEY NSW 2060 AUSTRALIA
 PO BOX 651 NORTH SYDNEY NSW 2059 AUSTRALIA
 T +612 8952 7100 F +612 8952 7199
 E sydney@sydneydesigninc.com.au www.designinc.com.au

Architecture Urban Design Interiors

CLIENT **SCHOOL INFRASTRUCTURE NSW**

PROJECT **NEW ULTIMO PYRMONT PUBLIC SCHOOL**

Quarry St, Ultimo NSW
 TITLE **POST DEMOLITION PLAN**

02-SITE	
DRAWN BY	TB
SCALES	1 : 200 @ A1
PLOT DATE	09/05/17
PROJECT N°.	S15124
DRAWING N°.	DA-1005
DRAWING STATUS	REVIEWED BY SIGNATURE DATE
DA	TL

QUALITY CERTIFIED ISO 9001
 Completion of the Drawing Status is evidence the design has been verified as conforming to the requirements of the Project M.S. Plan. Initiating the 'Drawn By' box confirms that this drawing has been prepared in conformity with Designinc Sydney M.S. procedures.

DEVELOPMENT APPLICATION

